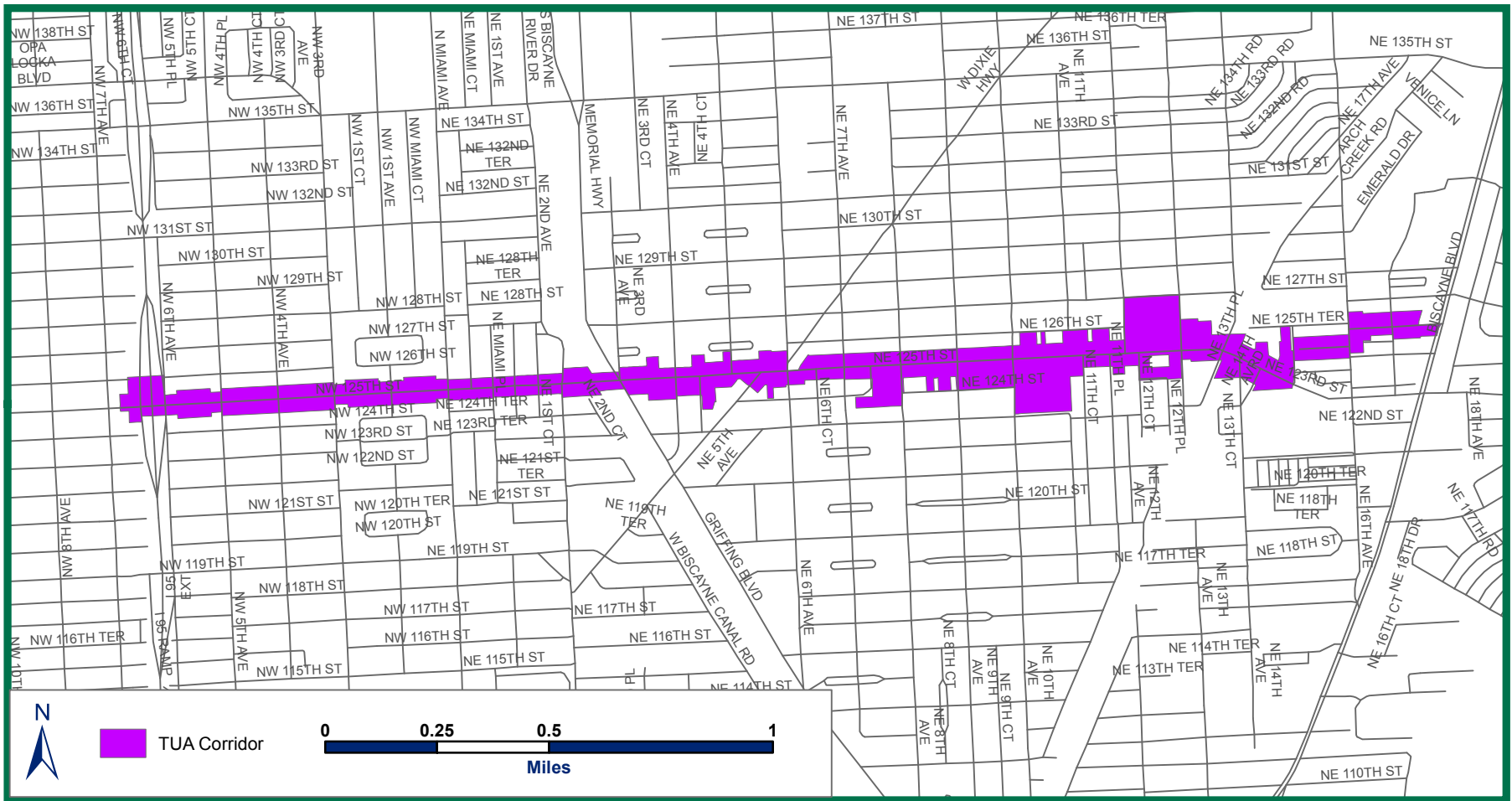


N. Miami Downtown TUA Corridor



N Miami Downtown Corridor Scorecard (Contiguous Block Groups)

Population	11,639	School enrollment percentages by age group:	
Female	6,044	3&4 yr olds - Nursery Sch. Pre-K	36.8%
Under 5 Years	968	5-14 yr olds in K to 8 grade	94.8%
5 to 24 Years	3,702	15 to 19 yr olds in High School	66.8%
25 to 44 Years	3,068	18 to 29 yr olds- College/Grad Sch.	52.0%
45 to 64 Years	2,739	Percent of population 25 yrs and above with:	
65 of more years	1,162	High Sch. Diploma/GED	30.3%
Hispanic	3,466	Associate's Degree	8.0%
White - Not Hispanic	1,735	Bachelor's Degree	11.2%
Black - Not Hispanic	6,117	Graduate/Professional Degree	4.3%

Number Living in Poverty	3,456
Labor Force	5,964
Employment	5,267
Unemployment Rate	11.7%
Median Household Income	\$31,766
Per Capita Income	\$16,589
Median Home Value	\$199,998
Housing Vacancy Rate	17.4%

Employment by Industry:

Agriculture	-
Goods Producing	595
Wholesale/Retail Trade	967
Transp, Warehousing, Util.	221
Finance, Ins., Real Estate	314
Prof. & Business Services	502
Ed. & Health Services	1,118
Arts, Ent. & Tourism	1,119
Other Services	184
Public Administration	199

Data Source: 2011 American Community Survey 5-Year Estimates; Department of Regulatory & Economic Resources Economic Policy and Analysis Unit.

