



October 5, 2023



CITIZEN'S INDEPENDENT TRANSPORTATION TRUST

- PRESENTATION -



WHO WE ARE

THE VILLAGE OF KEY BISKEYNE

The Village of Key Biscayne is **1.25 square miles**, sits prominently on a **barrier island** off the coast of Miami and is a **thriving and vibrant community** only minutes from downtown Miami. With more than 14,890 residents, our international community treasures our roots as a **haven** for those seeking an **island lifestyle**. Incorporated in 1991, the community purposely created a **local government** to give **voice to our residents** and guide our future while **collaborating with neighboring municipalities and agency partners**.



Median household income of \$167,990



5,000 condominium units



15,000 residents - 25% growth from 2010-2023



1,000+ business and professional licenses



1,400 single-family homes or duplexes



7,000,000+ visitors per year

CITT FUNDS AT WORK

THE VILLAGE'S TRANSIT SOLUTION



THE VILLAGE'S TRANSIT HISTORY:

- In **2014** The Village developed its first Sustainability Plan
- Transportation was one of the nine specific program areas
- The plan encouraged the Village to:
 - “Engage with Miami-Dade Transit, Miami-Dade Metropolitan Planning Organization, Citizen’s Independent Transportation Trust (CITT) and other relevant entities to improve transit options” as well as “Evaluate internal transit options for the Village”
- In **2015** Village community survey showed that overall traffic conditions was a top concern
- The Village Council approved the Key Biscayne Transit Mobility Study which recommended micro-transit solutions such as small, multi-passenger, low speed, electric vehicles.
- By **December 2016**, the Village officially launched the **Freebee Public Transit Ridesharing Program**
- The Village is **BeeFree’s 1st Ever Customer!**



TRANSIT GOALS

- Enhance Internal Village Transit Capacity
- Reduce Reliance on personal cars
- Meet last mile requirements
- Improve multi-modal traffic flow on high-traffic roads



TRANSIT BY THE NUMBERS



- Over the past 6 years, Freebee ridership has steadily grown
- Ridership dropped in 2020 by 30% from 2019 due to COVID-19 pandemic
- Ridership rebounded in 2021, exceeding 2019 annual ridership
- Ridership in 2023 is on track to surpass 2022
 - Jan 01 – Aug 31, 2022, total ridership = 45,156
 - Jan 01 – Aug 31, 2023, total ridership = 59,959
 - Anticipated Annual Ridership Increase from 2022 to 2023 is **33%**
- Ridership Goal: **10,000** monthly riders or **100,000** annual riders - whichever comes first...

...then onto the second!

- Hours of Operations
 - 8:00am to 8:00pm on Sunday – Thursday
 - 8:00am to 10:00pm on Friday
 - 10:00am to 10:00pm on Saturday

TRANSIT BY THE NUMBERS

COMPLETED RIDES

31,325

PASSENGERS

45,154

AVG DRIVER RATING

4.91

Jan 01 – Aug 31, 2022

MEN DRIVEN

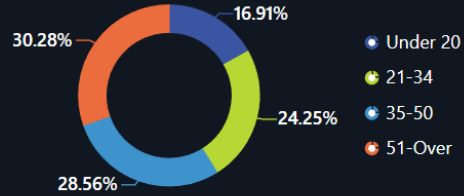
9,460

FEMALE DRIVEN

35,696

VMT

99,326



RIDES BY WAITING TIMES

0-10 MIN

18122

10-15 MIN

6185

15-20 MIN

3373

20-30 MIN

2740

30+ MIN

905

Jan 01 – Aug 31, 2023

COMPLETED RIDES

41,670

PASSENGERS

59,750

AVG DRIVER RATING

4.92

MEN DRIVEN

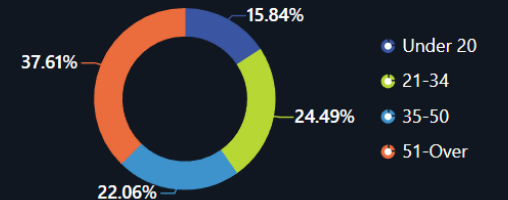
11,370

FEMALE DRIVEN

48,589

VMT

71,911



RIDES BY WAITING TIMES

0-10 MIN

25964

10-15 MIN

8050

15-20 MIN

3946

20-30 MIN

2791

30+ MIN

919

- Completed Rides Increased by 33%
- Ridership Increased by 33%
- Rides with 0-10 Min Wait Times Increased by 43%
- Rides with 20-30 Min Wait Times Only Increased by 2%
- Rides with 30+ Min Wait Times Only Increased by 2%

FREEBEE MONTHLY RIDERSHIP

	2016	2017	2018	2019	2020	2021	2022	2023
January	-	3,616	4,513	5,832	6,517	5,011	5,083	6,978
February	-	1,558	4,596◆	9,101	6,669	5,386	5,481	7,401
March	-	12	5,877	6,209	2,979	6,887	5,995	8,146
April	-	4,252	5,135	5,733	1,098	6,969	5,444	7,774
May	-	4,141	5,689	5,685	1,289	7,113	5,223	7,374
June	-	5,531	5,301	6,297	2,613	7,017	5,040	6,893
July	-	5,276	5,385	6,434	2,942	7,524	6,011	7,599
August	-	5,542	5,493	6,315	3,598	7,324●	6,879	7,794
September	-	3,329	5,211	5,275	3,794	6,676	5,819	
October	-	4,494	5,411	6,296	4,149	6,589	6,272▲	★
November	-	4,698	5,361	5,615■	4,457	5,567	5,807	
December	1,627❖	4,911	5,661	5,965	4,814	5,948	6,178	
Calendar Totals	1627	47360	63633	74757	44919	78011	69232	59959

❖ 3 On-Demand Vehicles Starting Dec 1st 2016

◆ 3 On-Demand Vehicles + 2 Loop Starting Feb 1st 2018

■ 4 On-Demand Vehicles + 1 Loop Starting Nov 1st 2019

● 5 On-Demand Vehicles Starting Aug 1st 2021

▲ 6 On-Demand Vehicles Starting Oct 1st 2022

★ 8 On-Demand Vehicles Starting Oct 1st 2023

REPORT: NOV 2016 – AUG 2023

COMPLETED RIDES

298,610

PASSENGERS

452,441

AVG DRIVER RATING

4.87

MEN DRIVEN

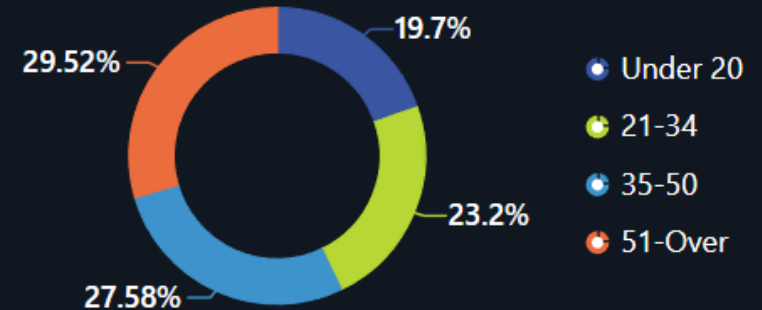
108,805

FEMALE DRIVEN

344,336

VMT

374,486



RIDES BY WAITING TIMES

0-10 MIN
194068

10-15 MIN
52288

15-20 MIN
26969

20-30 MIN
19410

30+ MIN
5627

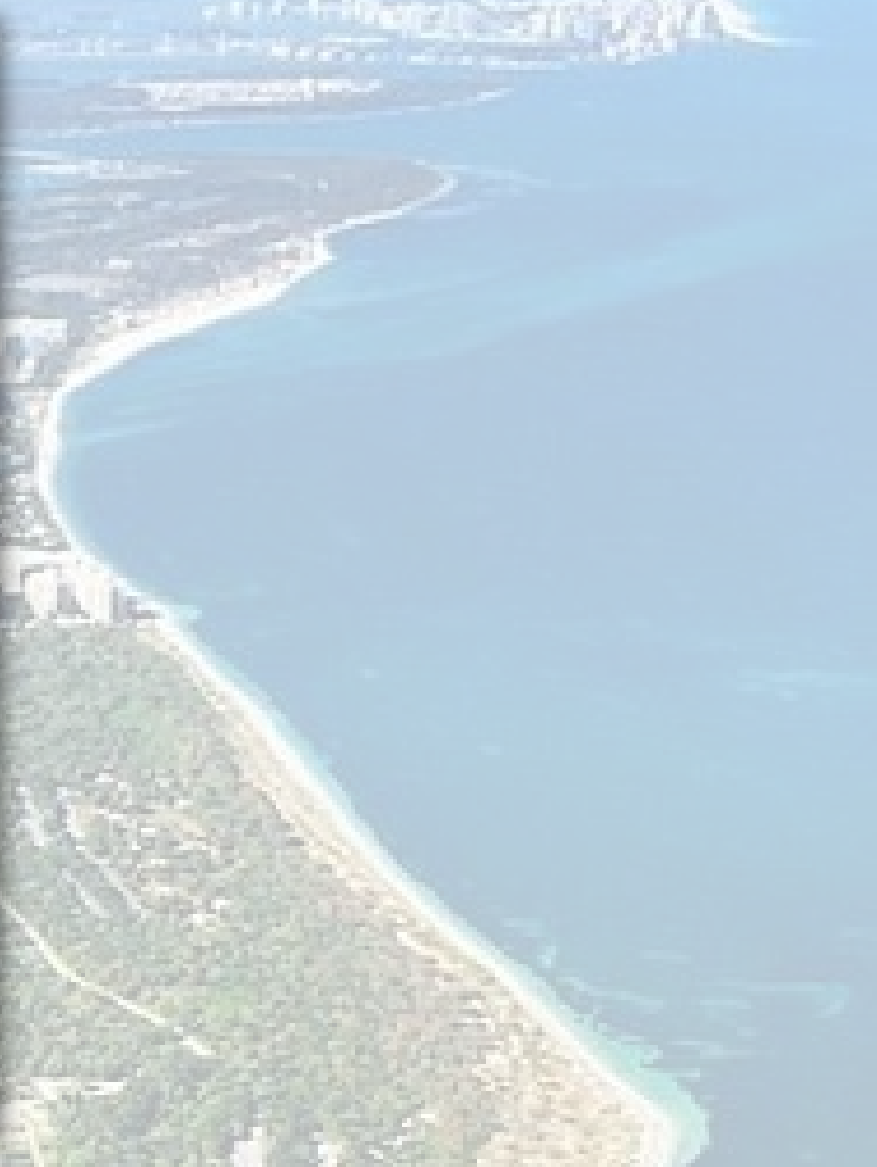
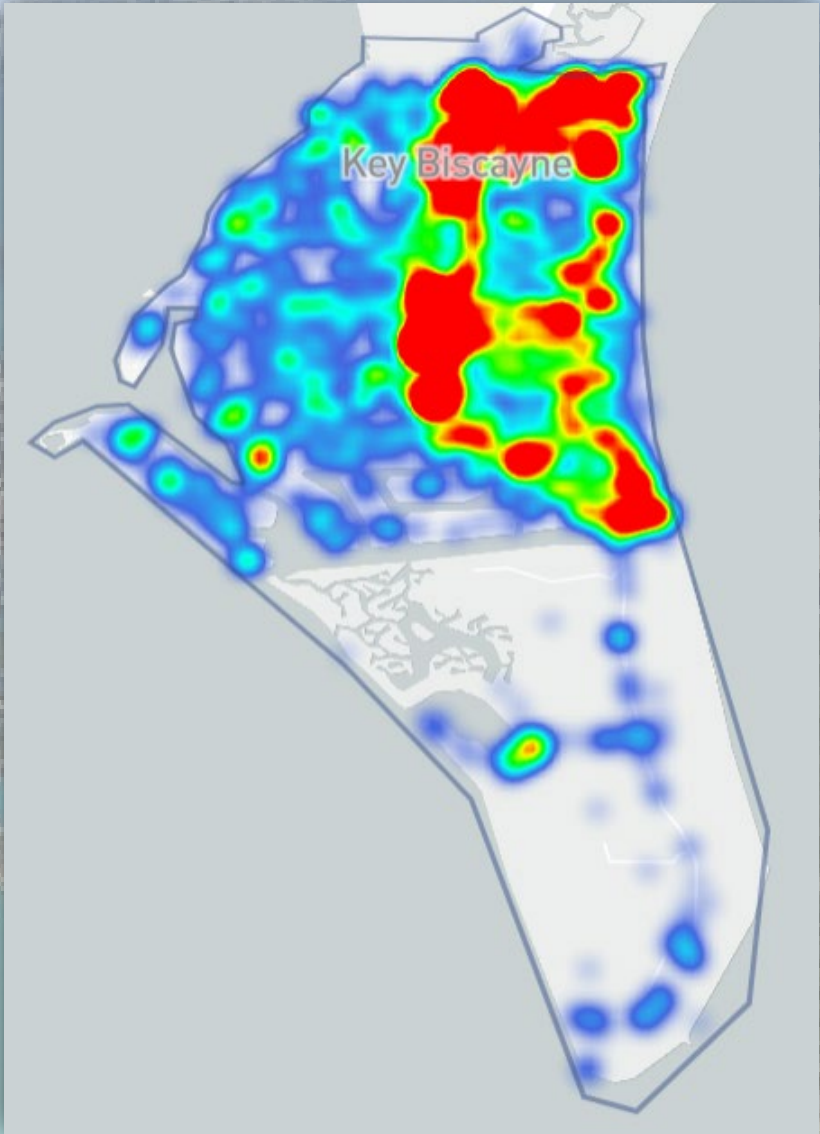
APP RIDES
214,451

FLAG DOWN RIDES
85,226

DISPATCH RIDES
32,195

UNIQUE RIDES

HEATMAP: NOV 2016 – AUG 2023



MOBILITY FUNDING

TRANSIT (FREEBEE):

- The Village pays **100%** of the transit services with PTP Funds
- TPO/USDOT Grants
- Transit Development Grant from the FDOT
- Remaining funds are transferred to the Transportation Fund

TRANSPORTATION:

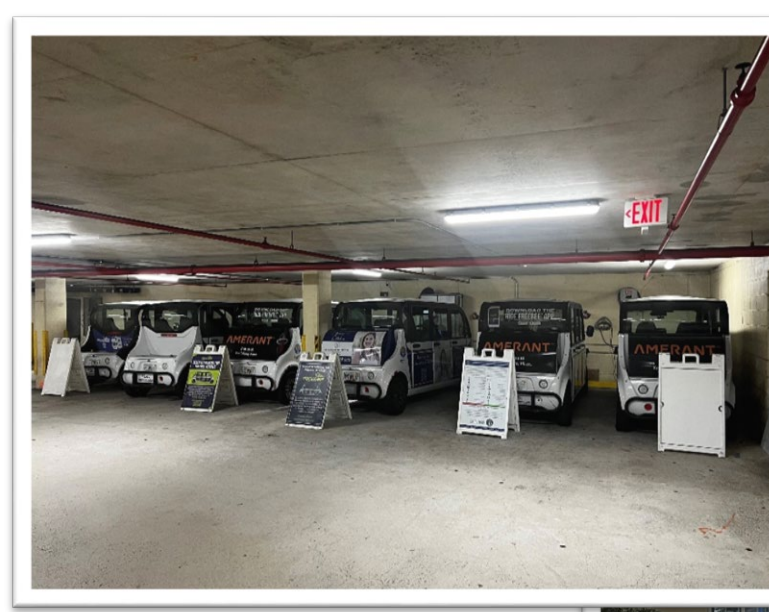
- PTP Funds
- Village Funds



TRANSIT CHALLENGES & OUR EFFORTS

CHALLENGES:

- Space where to park the Freebees
- Public Awareness
- Route Optimization
- Upfront funding during grant processing
- Early stoppage of 2 vehicles due to early start operations
 - Stopgap to accommodate riders due to loss of MDT Route B Harbor Leg with the implementation of the Better Bus Network

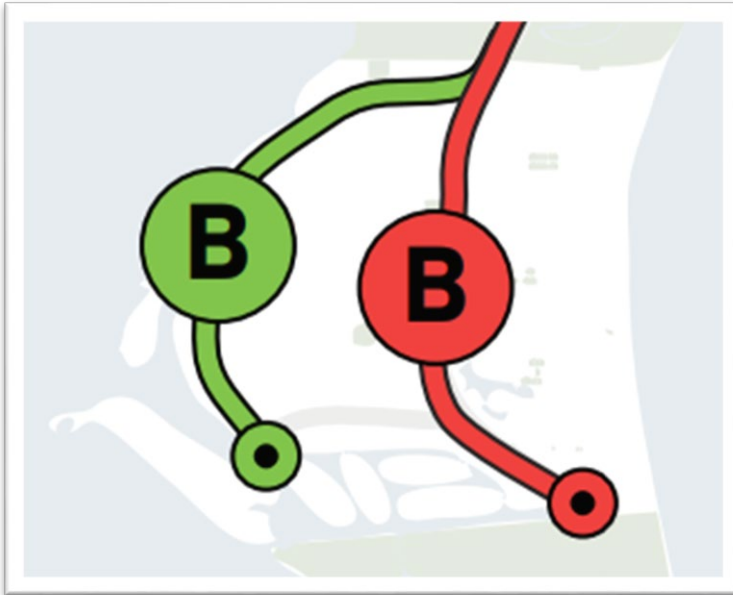


OUR EFFORTS:

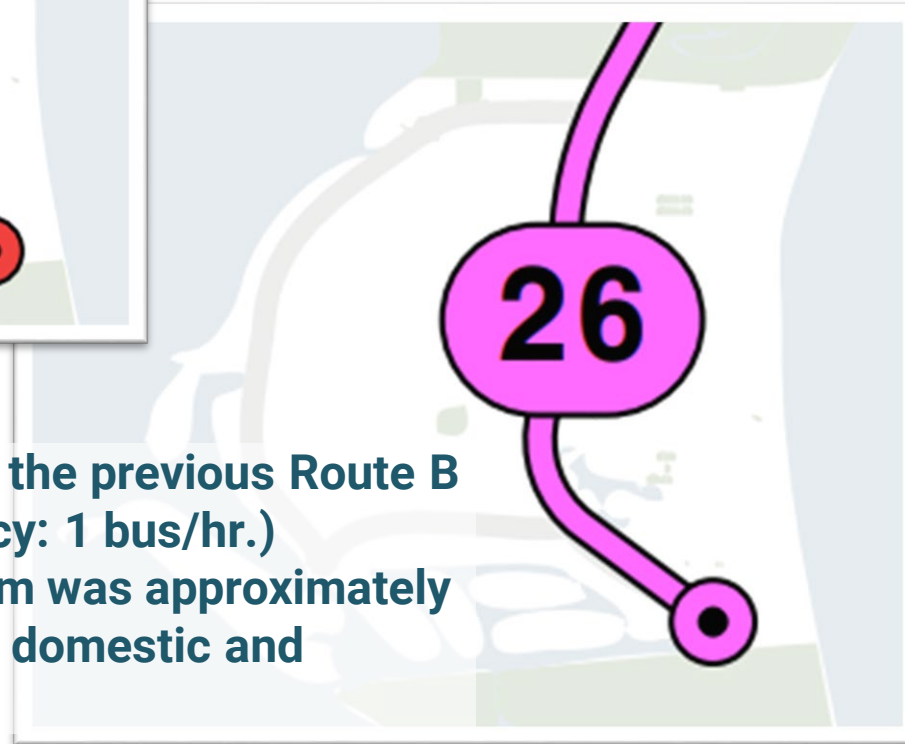
- Scout Village areas with BeeFree and work around Village Staff Schedules
- Provide Freebee information via Village Connect, in Person, and *Engage Residents*
- Freebee operators currently try to do it in real time and company is working on automating it
- Take into account the necessary funds during annual budget cycle
- Reached out to Miami-Dade County DTPW for assistance

TRANSIT CHALLENGES

- BBN Replaced Route B with Route 26



- Peak Hour Frequency Improved from/to:
 - 15 min / 4 buses per hr.
 - *12-10 min / 5-6 buses per hr.*



- But the Harbor Dr. Leg of the previous Route B was eliminated (Frequency: 1 bus/hr.)
- Ridership from 7am – 9am was approximately 50 and was comprised of domestic and construction workers



»»» Thank you

