



Countywide Transportation Master Plan (CTMP)

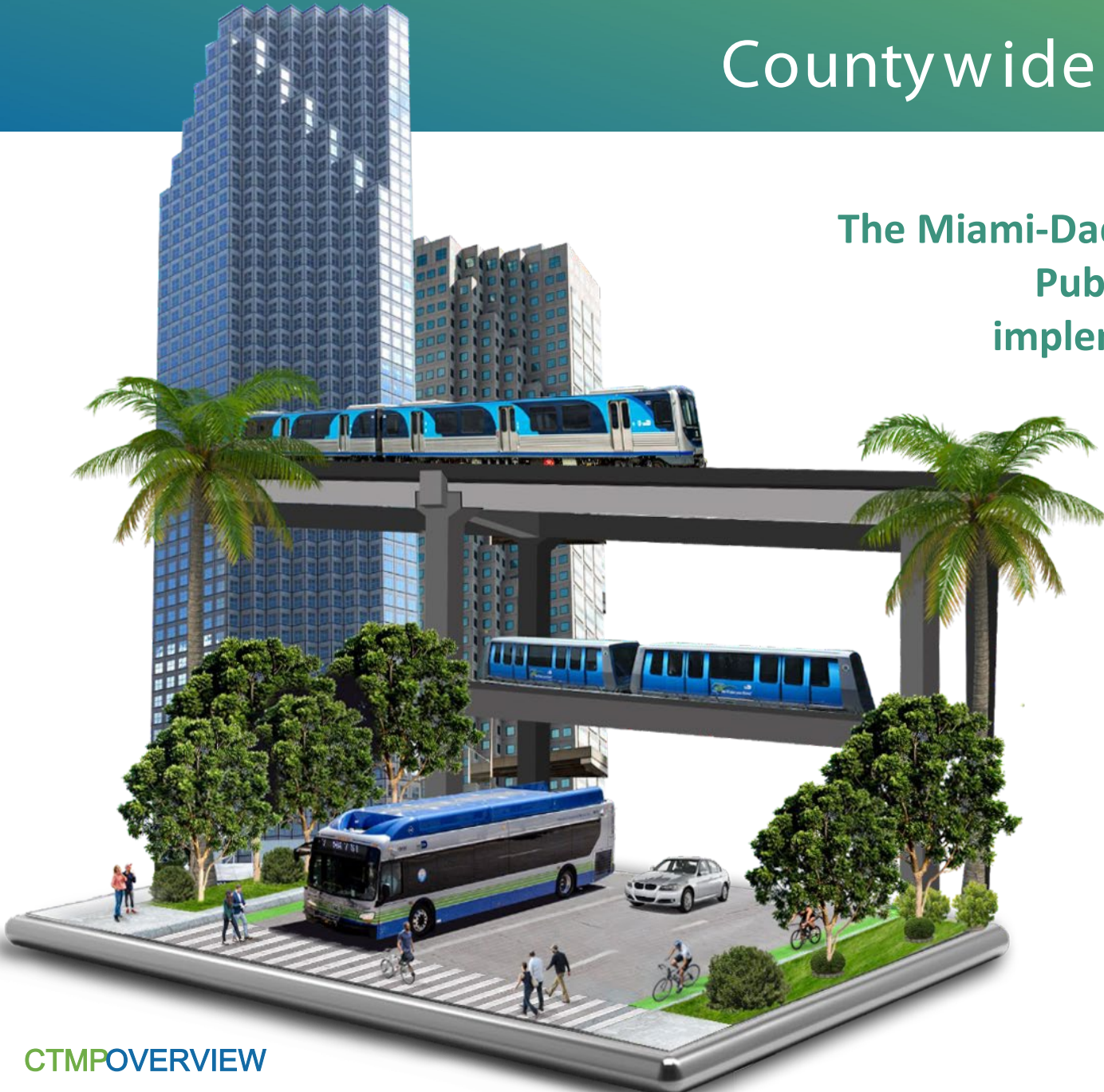
PRESENTED BY

MIAMI -DADE COUNTY DEPARTMENT OF
TRANSPORTATION AND PUBLIC WORKS (DTPW)

Countywide Transportation Master Plan

The Miami-Dade County Department of Transportation and Public Works (DTPW) is developing a countywide implementation plan for all transportation projects

The **CTMP** will serve as an implementation plan for **transit, pedestrian, bicycle, freight, roadway, and other transportation infrastructure projects** being carried out by Miami-Dade County over the next 20 years.



Community Impacts

Transportation infrastructure affects **your:**



Through the **CTMP**:



Safer, more connected transportation network



Closing of gaps in transportation network

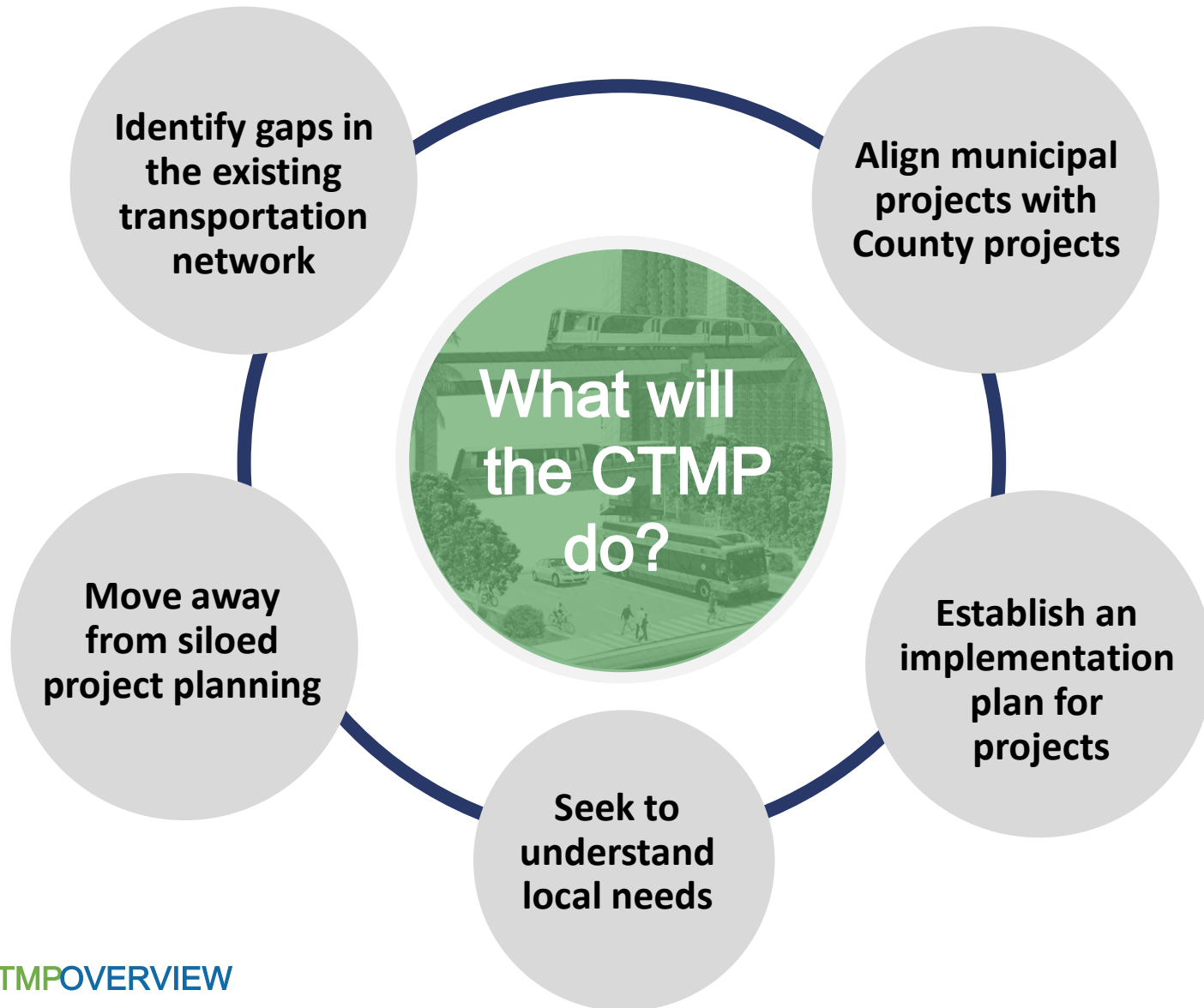


Faster project implementation



Public has a voice in the planning process

Improving Implementation Outcomes



*County taking on leadership role...
Defining public process to plan and understand local needs*

Why is the County doing this and how does it help?

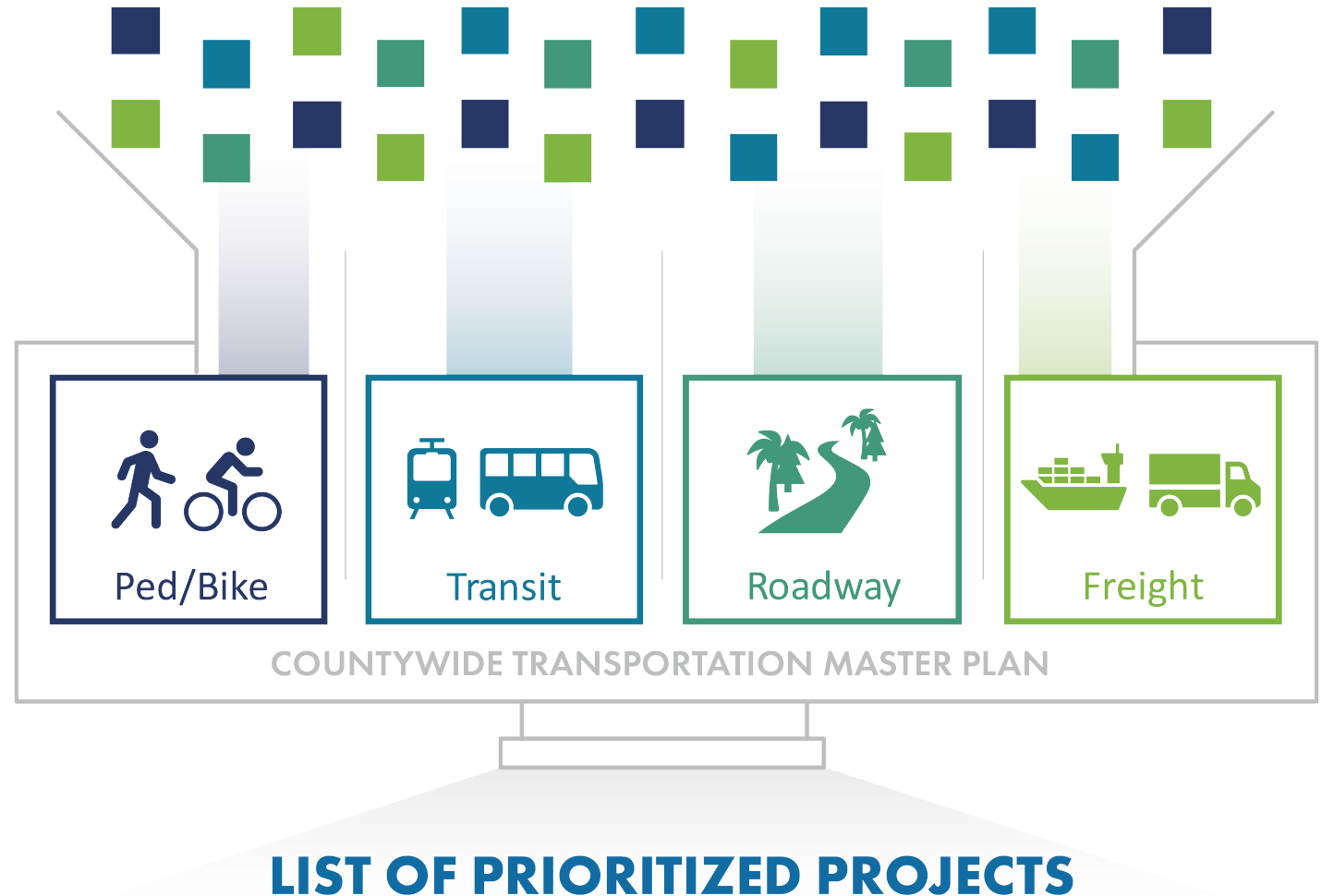
The County needs an objective and methodical way to prioritize projects; CTMP will do that, and assist with closing gaps in the existing network

Prioritization of Transportation Projects

Though the Countywide Transportation Master Plan we will develop a project prioritization framework that will set forth specific criteria for each of the modes to prioritize projects.

The modal plans will follow a **safe systems approach** and consider:

- Safety
- Equity
- Resilience
- Affordable Housing
- Land Use
- Community Characteristics



Countywide Transportation Master Plan Benefits



Better prioritization will lead to faster implementation



Secure funding more effectively



Fund/deliver projects quicker



Minimize disruptions for residents



Centering community needs

Public Engagement Activities



Public Input will drive the plan's success!

For the best input, the team needs to go to the people:

- Inform the community about the Countywide Transportation Master Plan
- Gather public input on the existing transportation network
- Learn more about local needs



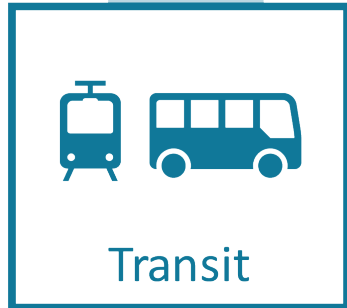
Public Engagement Activity Input



Safety enhancements to encourage non-motorized transportation as a mobility option.



Maintenance, traffic management enhancements, and safety measures with a multimodal emphasis.



Improve accessibility/reliability through faster travel times, last-mile connectivity enhancements.



Address truck parking capacity, illegal parking, and roadway congestion.

Seek to make transportation safer, efficient, and sustainable while creating a comprehensive and accessible transportation network

The image features a tropical beach scene with palm trees and a building in the background. The scene is split vertically into two color-coded halves: the left half is tinted green, and the right half is tinted blue. The text "THANK YOU" is centered across the middle of the image in a large, white, sans-serif font. The background shows a sandy beach in the foreground, a row of palm trees, and a multi-story building with windows in the distance. The sky is overcast.

THANK YOU