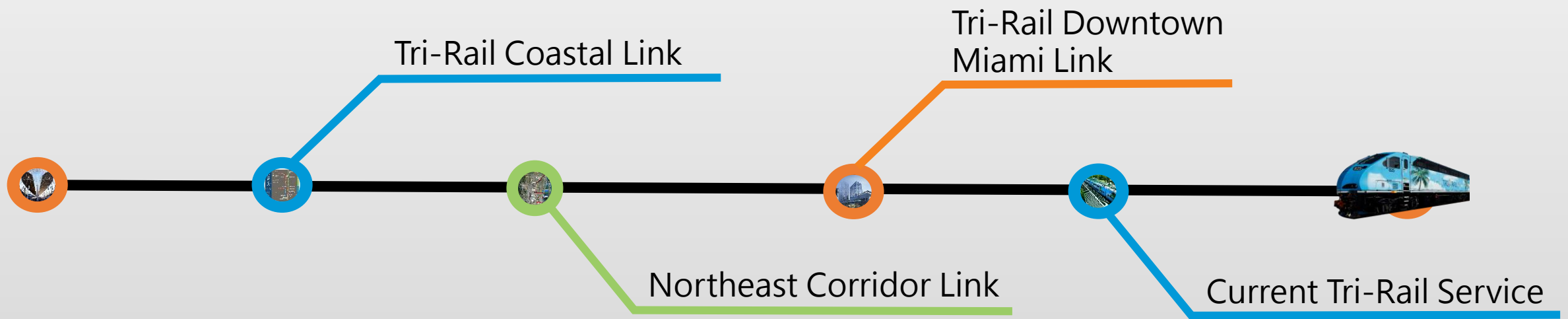




2017/18 Transportation Summit

C. Mikel Oglesby
Deputy Executive
Director
1/26/2018





Tri-Rail Downtown
Miami Link



Current Tri-Rail Service



Current Tri-Rail Service



Service began January 9, 1989

72.6 mile system / 145.2 track miles

18 stations

Weekday (50 trains/day)

Weekend (30 trains/day)

Mainline speed ranging from 20-79 mph

18 Locomotives (5 additional OOS)

21 Cab Cars

Tri-Rail Downtown
Miami Link



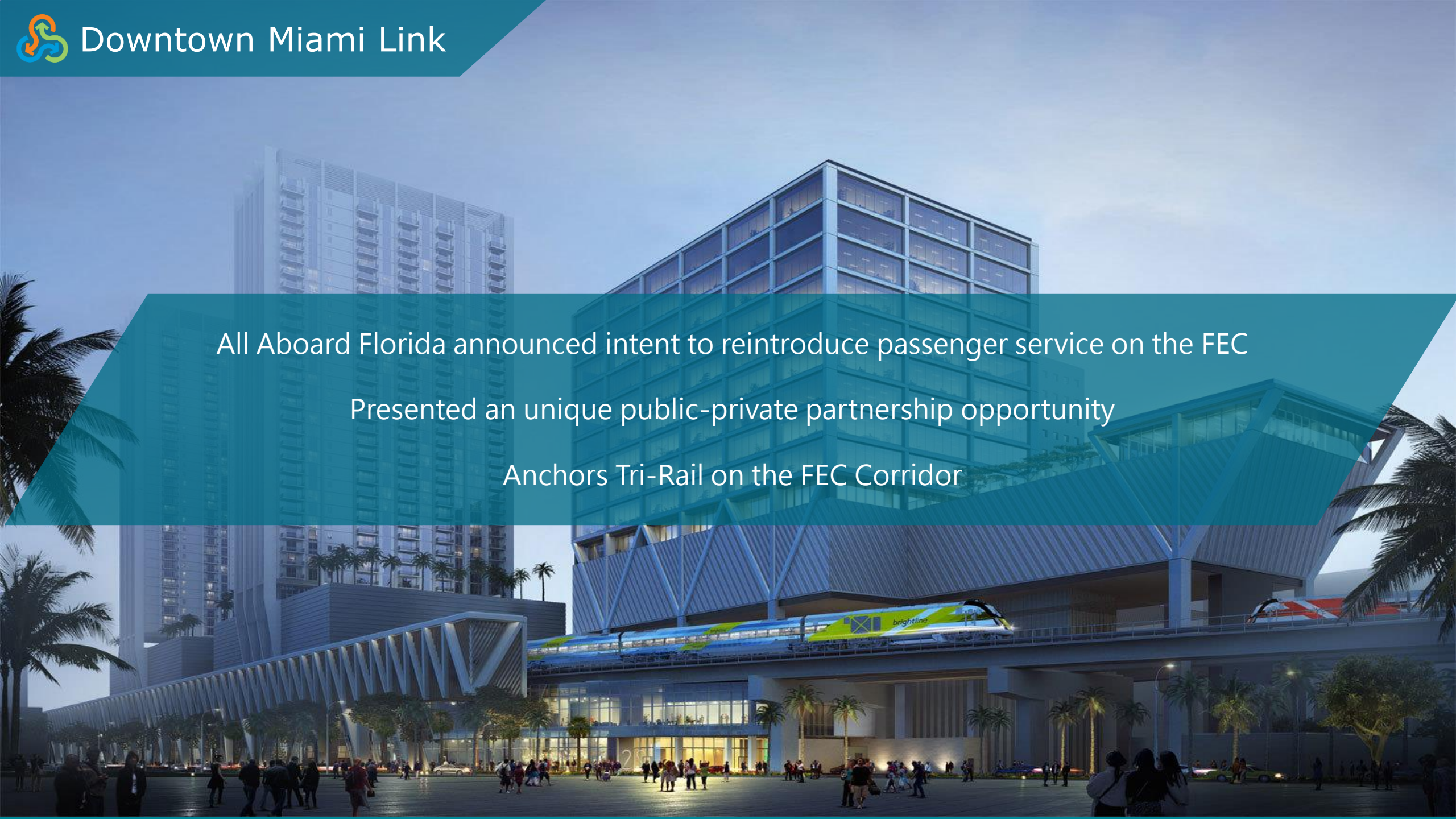
Current Tri-Rail Service

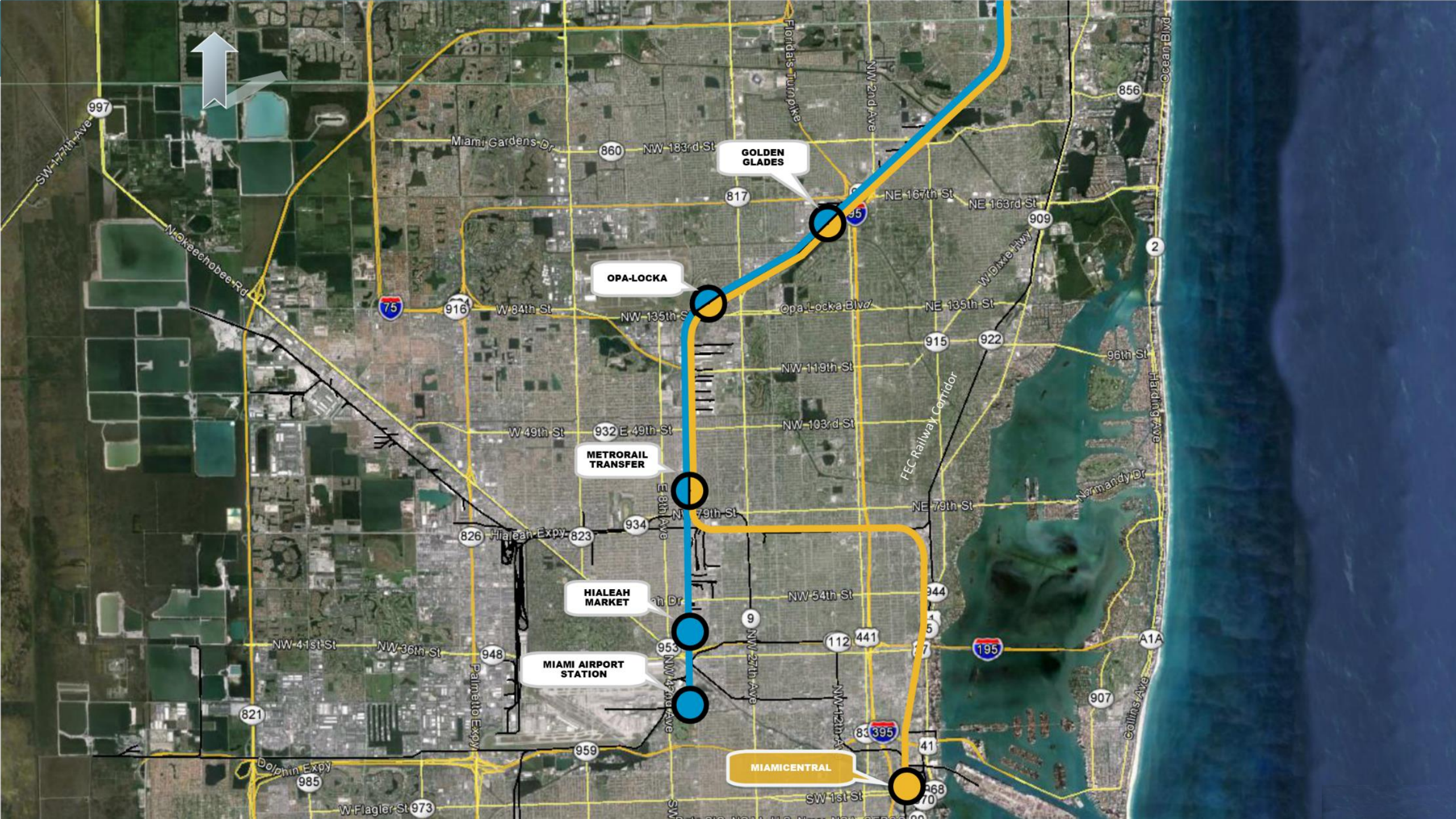


All Aboard Florida announced intent to reintroduce passenger service on the FEC

Presented an unique public-private partnership opportunity

Anchors Tri-Rail on the FEC Corridor







MiamiCentral: Miami's Transportation Hub

Spans over six downtown city blocks

Connects Tri-Rail, Brightline, Metrorail, Metromover and Metrobus Service

Retail / Restaurants / Residential

TRI RAIL

TRI RAIL

ALL ABOARD
FLORIDA

ALL ABOARD
FLORIDA

ALL ABOARD
FLORIDA

PLATFORM E

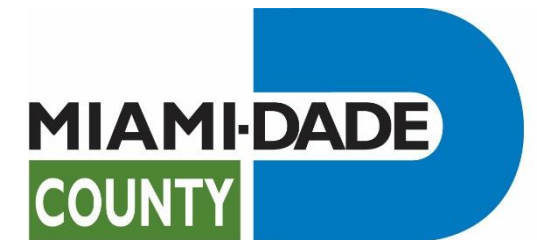
PLATFORM D

PLATFORM C


PLATFORM B

PLATFORM A





| Public Funding Partner | Project Element | Total |
|--------------------------------------|---|--------------|
| Southeast Overtown/Park West CRA | Station | \$17,528,049 |
| Omni CRA | Station | \$3,750,000 |
| City of Miami | Station | \$8,097,030 |
| Bayfront Park Trust | Station | \$250,000 |
| Miami Downtown Development Authority | Station | \$1,267,000 |
| Miami-Dade County | Station | \$13,900,000 |
| SFRTA/Tri-Rail | Rail Infrastructure (Positive Train Control) | \$3,107,921 |
| SFRTA/Tri-Rail | Rail Infrastructure and Rail Corridor Easement | \$17,190,000 |
| SFRTA/Tri-Rail | Station | \$5,350,000 |
| | Total Project Cost | \$70,440,000 |

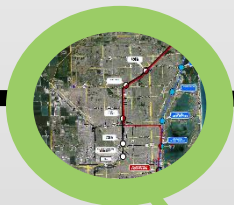


All Aboard Florida, as Project Lead, Provided:

- Prime land in downtown
- Responsibility for Cost overruns
- One time corridor access fee of \$1M
- Financial carrying cost for the station improvements
- Totals contributions in excess of \$25M



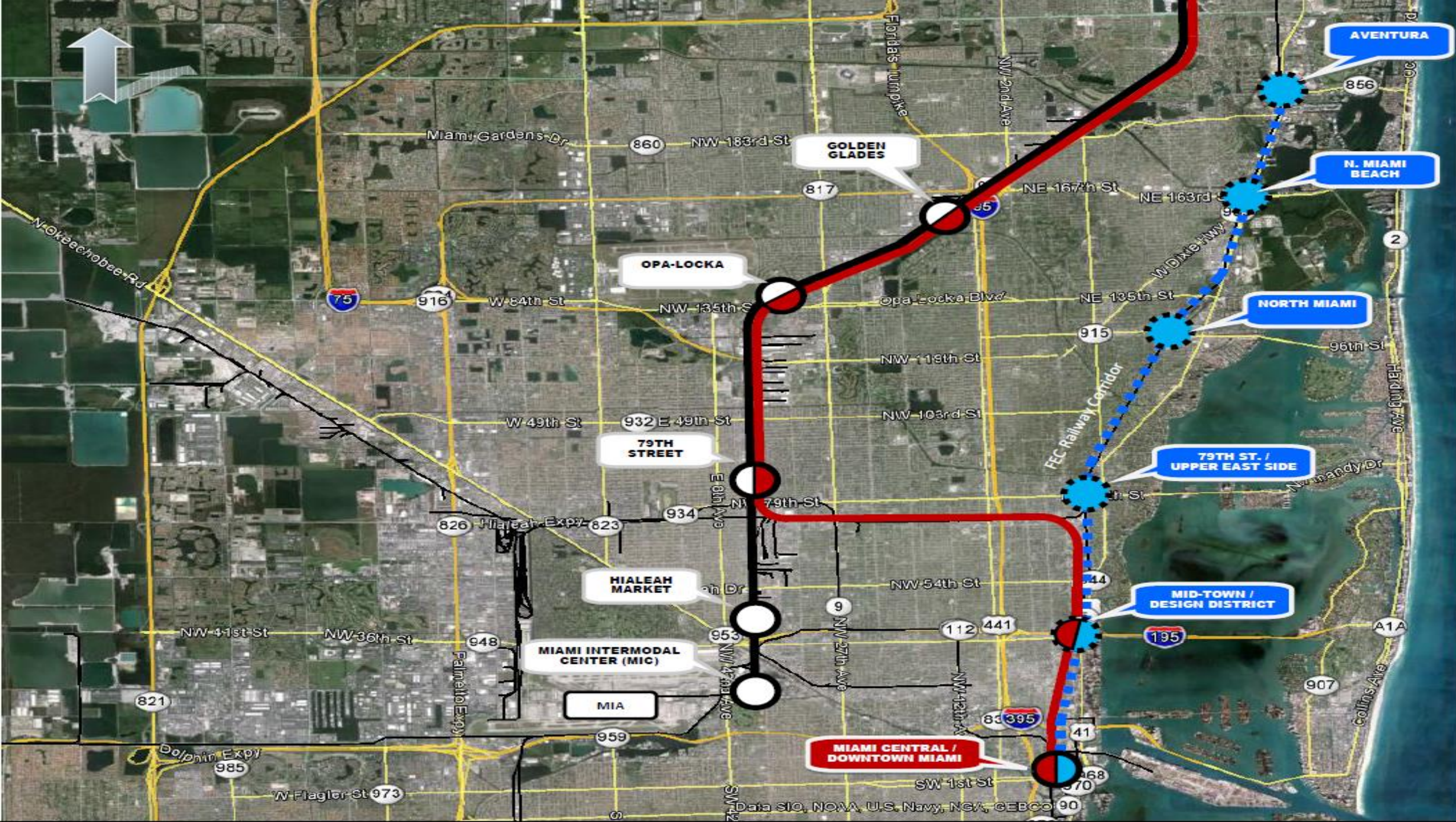
Improve rail mobility in the South Florida region
Enhanced connectivity to existing Tri-Rail service and Downtown Miami
A one seat ride into Downtown Miami
Will provide a cost effective and strategic transit solution for Miami-Dade County
Public funds leverage private investment



Northeast Corridor Link



Tri-Rail Downtown
Miami Link





Northeast Corridor

Represents first phase of Tri-Rail expansion on FEC corridor to Aventura

1 of 6 Miami-Dade County SMART Plan corridors

Miami-Dade County is the project lead

6 proposed stations / 13 miles

Tri-Rail Coastal Link



Northeast Corridor Link



85 miles of service from Downtown Miami to Jupiter

Fully integrated with Tri-Rail

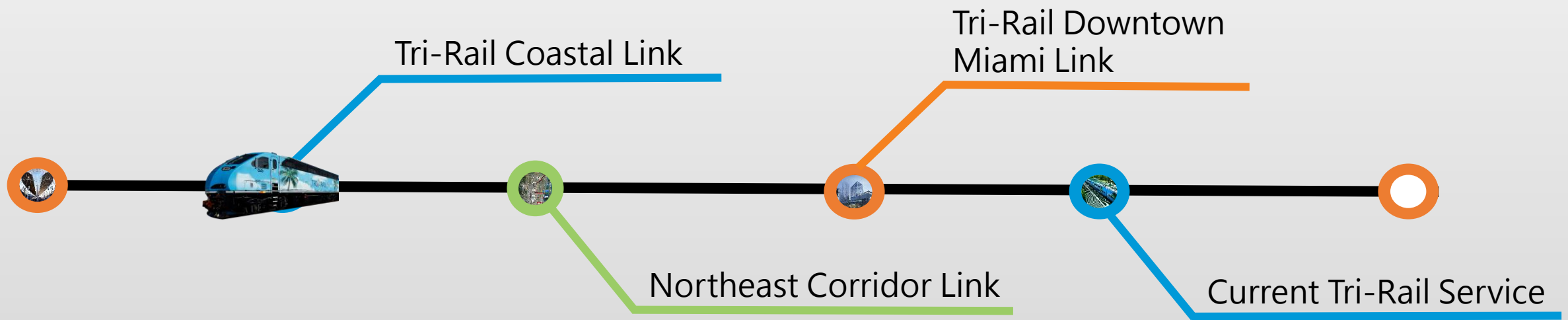
Approximately 25 stations

Up to 50 trains/day

30 minute headways



FDOT performed preliminary environmental work
FDOT has fully funded Project Development phase with state funds
Project Development phase is on hold
Can be completed in 18-24 months





Thank You

C. Mikel Oglesby
SFRTA Deputy Executive Director

