



2022 Annual CITT Municipal Workshop

October 28, 2022



City of Doral

Public Works Director
Carlos Arroyo

Transportation Manager
Edna Sibila

Assistant Public Works
Director
Rita Carbonell

Transit Operations
Manager
Shirley Forero

Transportation Analyst
Marc O'Keefe

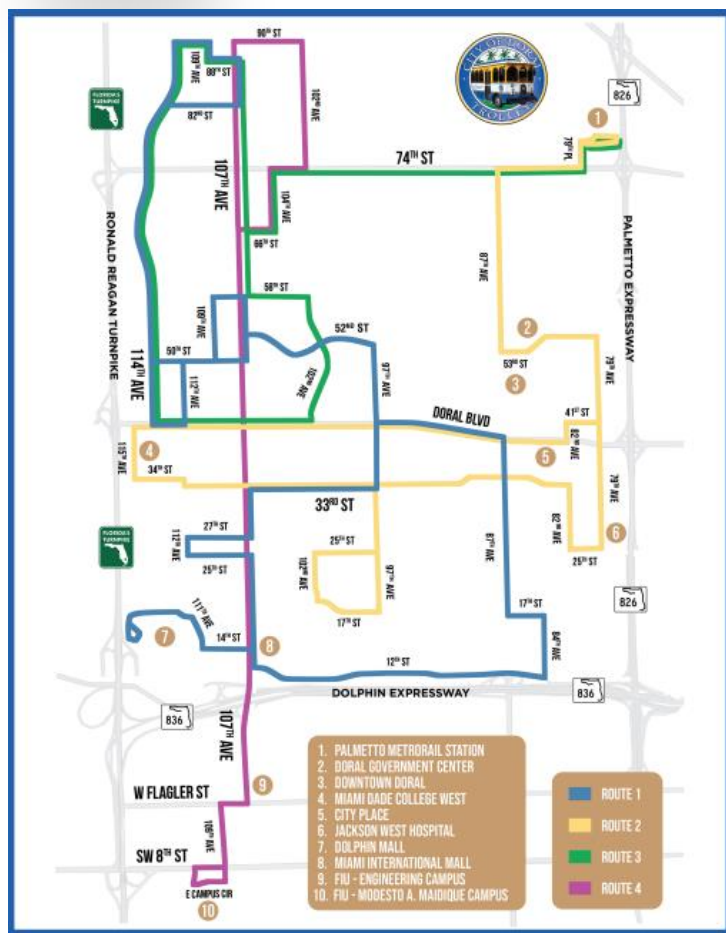
Transit Road Supervisor
Maharai Gonzalez



Transit



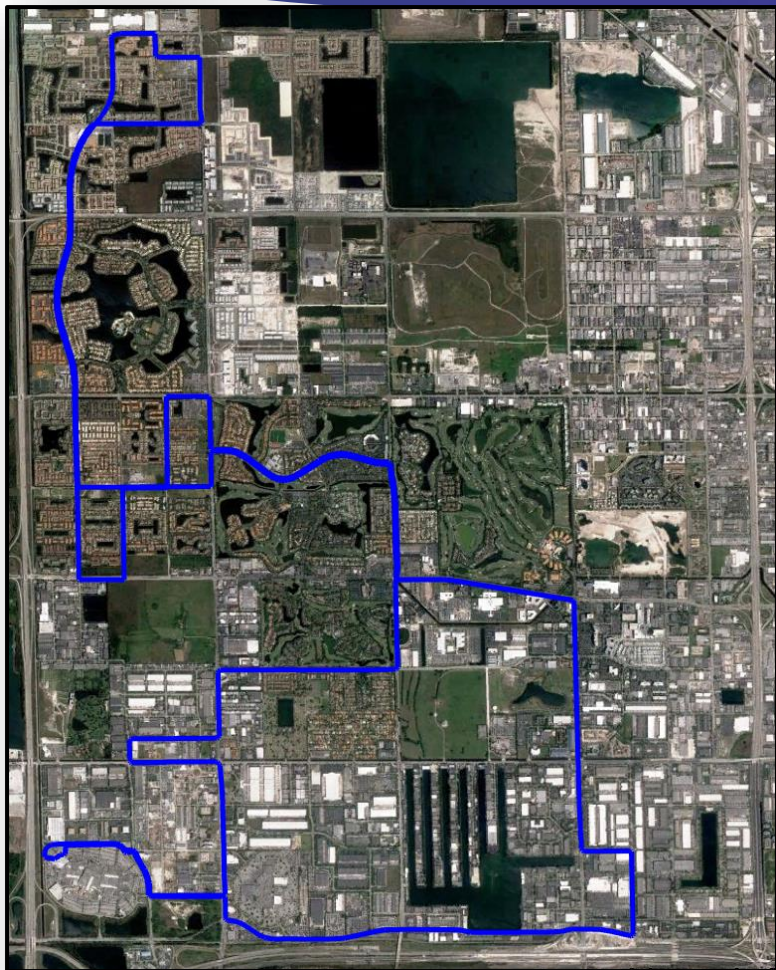
Doral Trolley Today



The **Doral Trolley System** was launched on **February 1, 2008**, with one vehicle to provide an alternative transportation method which would also contribute to reduce traffic congestion and reduce green house gases. Since then, the Doral Transit System has expanded to **seventeen (17) vehicles** servicing **four (4) routes**.



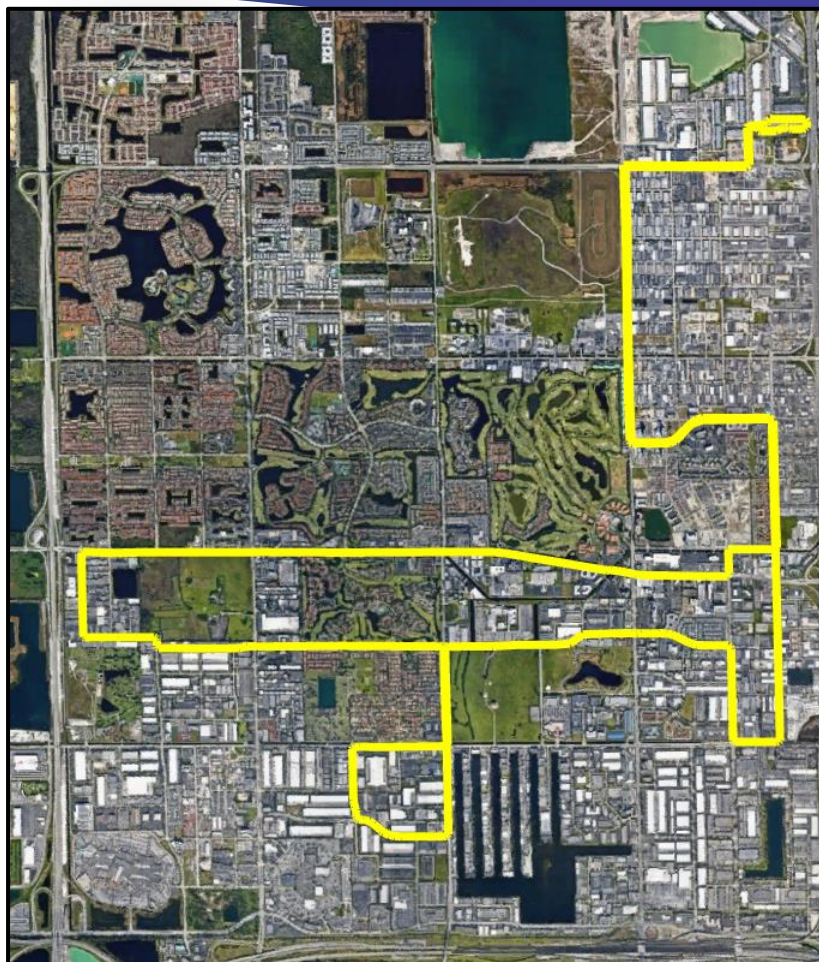
Route 1



- Monday – Friday
6:00 AM to 10:00 PM
Headways 30 – 40 mins
- Saturday and Sunday
7:00 AM to 8:00 PM
Saturday Headway 50 mins
Sunday Headway 90 mins
- Provides service to:
 - Miami International Mall
 - Dolphin Mall
 - Walmart
 - Doral Central Park
 - Doral Legacy Park
 - Ronald Reagan High School
 - Dr. Rolando Espinosa K-8 Center
 - Doral Academy Middle/High School
 - Eugenia B. Thomas K-8 Center
 - John I. Smith K-8 Center



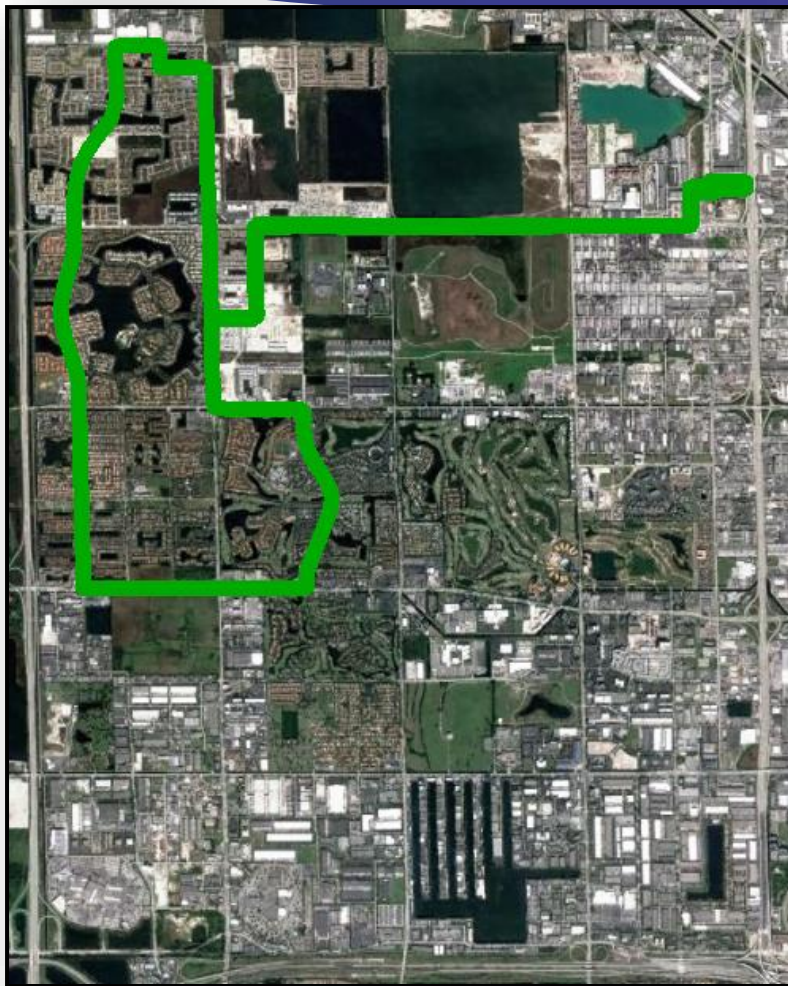
Route 2



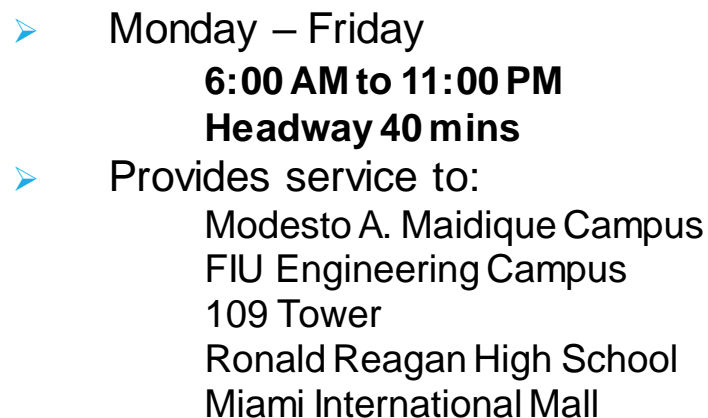
- Monday – Friday
6:00 AM to 9:20 PM
Headways 45-50 mins
- Saturday
6:50 AM to 7:30 PM
Headway 70 mins
- Provides service to:
 - Palmetto Metrorail Station
 - Downtown Doral
 - Downtown Doral Elementary Charter School
 - City Place
 - Carnival
 - US Southern Command
 - Miami Dade College
 - Jackson West Hospital



Route 3



- Monday – Friday
5:50 AM to 9:30 PM
Headway 40 mins
- Saturday
6:50 AM to 7:00 PM
Headway 40 mins
- Provides service to:
 - Palmetto Metrorail Station
 - Ronald Reagan High School
 - Dr. Rolando Espinosa K-8 Center
 - Eugenia B. Thomas K-8 Center
 - Doral Math and Science Academy
 - Morgan Levy Park
 - Doral Legacy Park





Trolley Fleet





Trolley	Length	Fuel Type	Year	Make/Model	Seating Capacity	ADA Seating
DT01	31'	Biodiesel	2009	Freightliner Supreme	26 - 30	2
DT02	32'	Biodiesel	2018	Freightliner Hometown	26 - 30	2
DT03	32'	Biodiesel	2011	Freightliner Supreme	26 - 30	2
DT04	32'	Biodiesel	2011	Freightliner Supreme	26 - 30	2
DT05	33'	Biodiesel	2011	Freightliner Supreme	30 - 34	2
DT06*	32'	Gasoline	2013	Ford Hometown	24 - 28	2
DT07**	30'	Biodiesel	2014	Freightliner Hometown	24 - 28	2
DT08**	30'	Biodiesel	2014	Freightliner Hometown	24 - 28	2
DT09**	30'	Biodiesel	2014	Freightliner Hometown	24 - 28	2
DT10**	30'	Biodiesel	2015	Freightliner Hometown	24 - 28	2
DT11**	30'	Biodiesel	2015	Freightliner Hometown	24 - 28	2
DT12	32''	Biodiesel	2016	Freightliner Hometown	26 - 30	2
DT13	33'	Biodiesel	2018	Freightliner Hometown	30 - 34	2
DT14	33'	Biodiesel	2018	Freightliner Hometown	30 - 34	2
DT15	33'	Biodiesel	2018	Freightliner Hometown	30 - 34	2
DT16	33'	Biodiesel	2018	Freightliner Hometown	30 - 34	2
DT17	33'	Biodiesel	2020	Freightliner Hometown	30 - 34	2

*Vehicle acquired with Developer Contribution

**Vehicle acquired with grant funding



"Free" Public Transportation Doral Trolley



For next Trolley call:
(305) 593-6710

Route #1: Stop #1001

www.cityofdoral.com

*Do you want to
know how long until
the next trolley
arrives?*

Dial
305.593.6710

Follow the prompt
and enter the STOP
number and you will
be informed
approximately when
the Doral Trolley will
arrive at your stop.





Bus Shelters





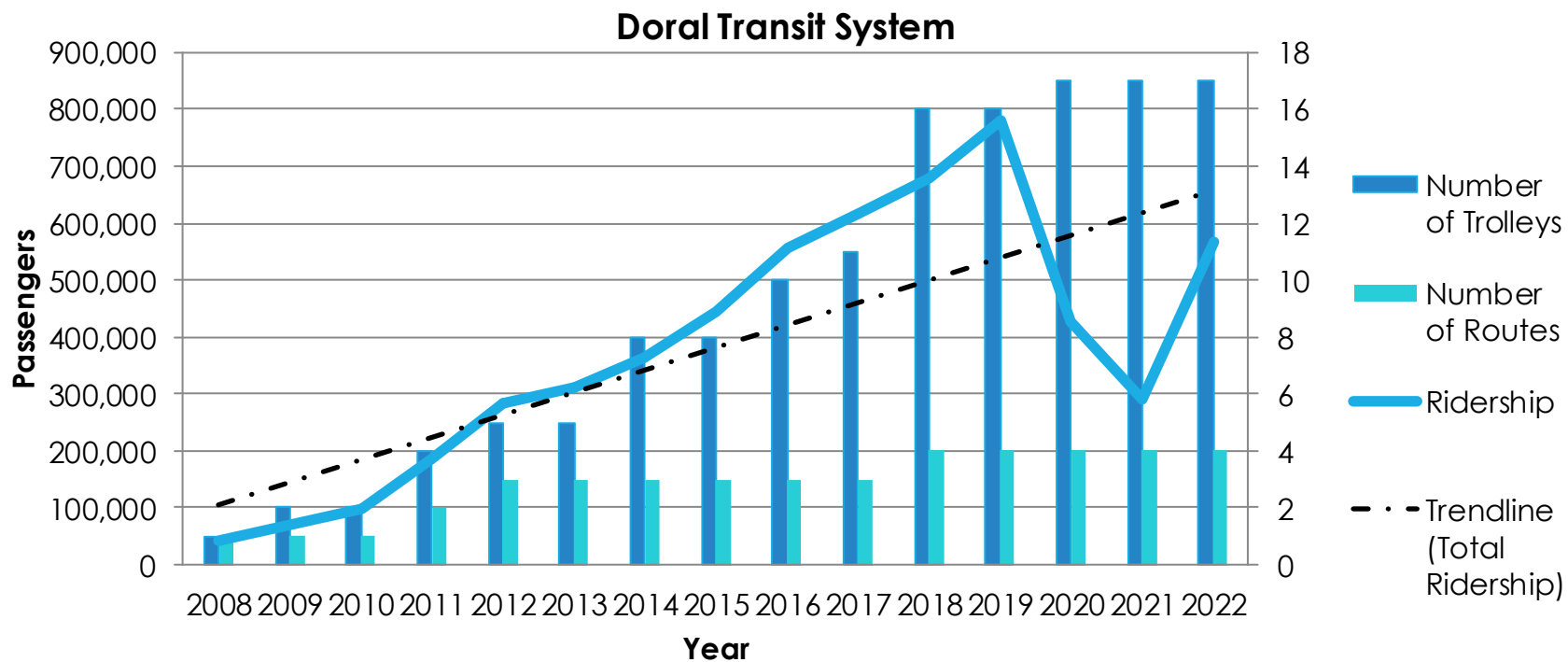
Doral Trolley Ridership



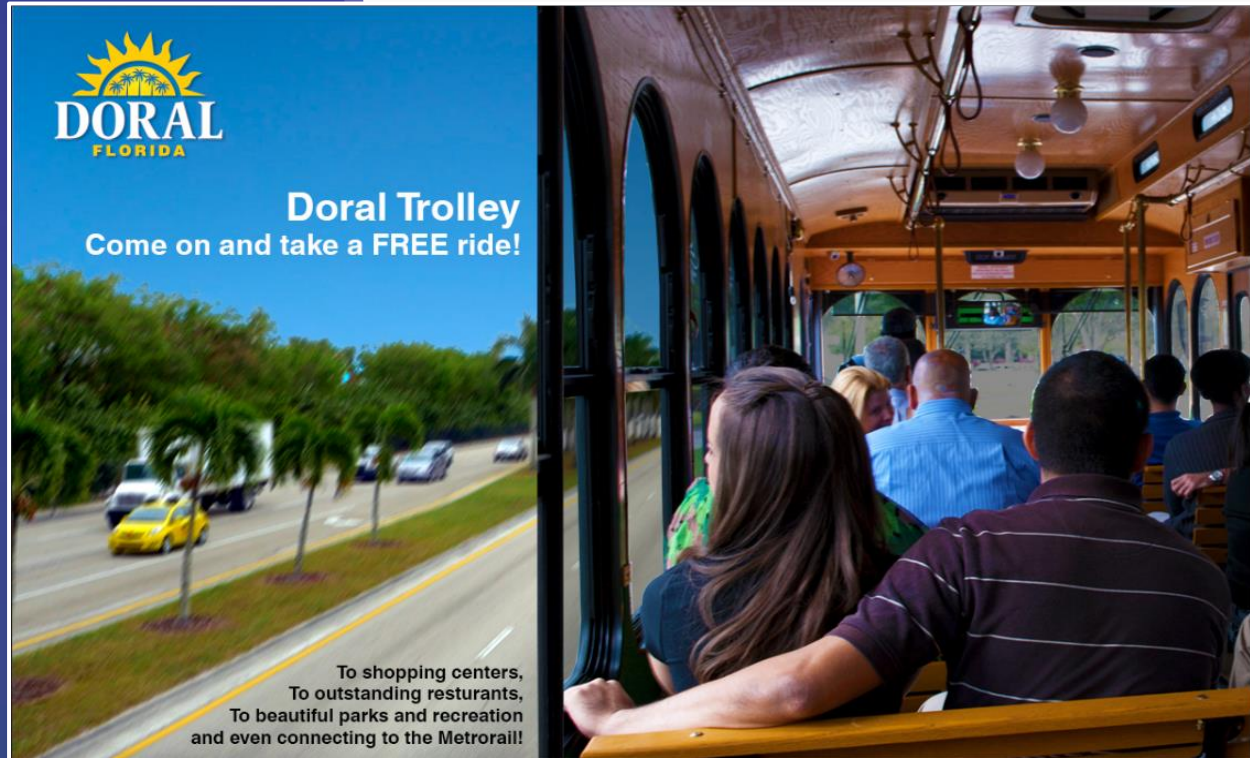
Fiscal Year	Trolley Ridership
Feb/08 - Sep/08	41,634
Oct/08 - Sep/09	70,730
Oct/09 - Sep/10	99,220
Oct/10 - Sep/09	185,755
Oct/11 - Sep/12	282,194
Oct/12 - Sep/13	312,636
Oct/13 - Sep/14	362,891
Oct/14 - Sep/15	444,233
Oct/15 - Sep/16	556,954
Oct/16 - Sep/17	616,165
Oct/17 - Sep/18	679,418
Oct/18 - Sep/19	780,081
Oct/19 - Sep/20	428,435
Oct/20 - Sep/21	291,618
Oct/21 - Sep/22	567,198



Doral Trolley Growth



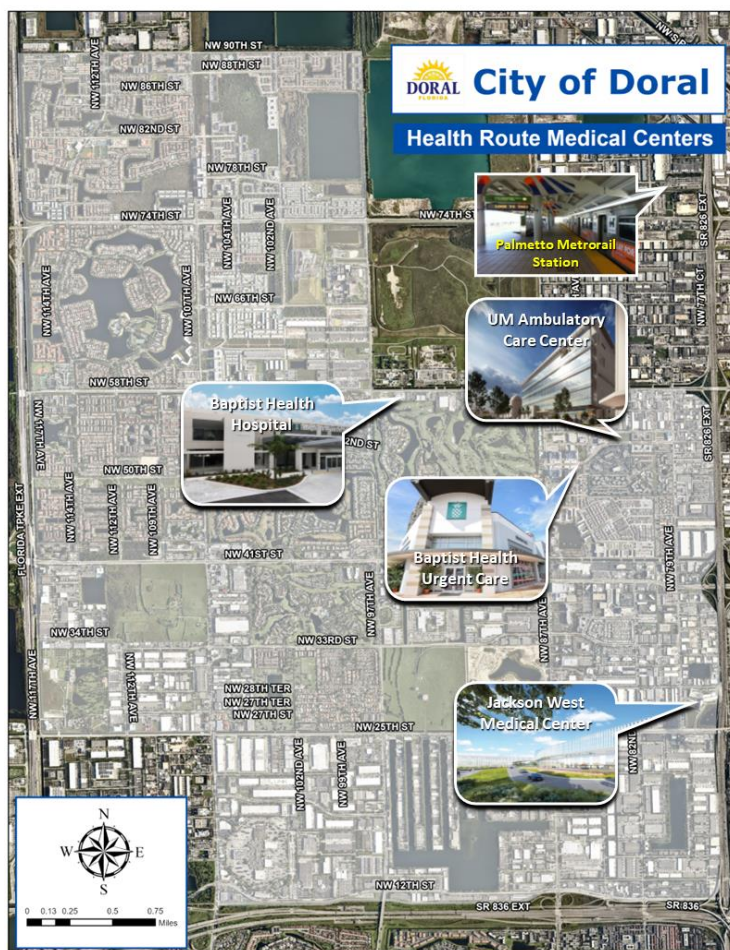
Real Time Tracker



[Trolley Real Time Tracker · City of Doral](#)



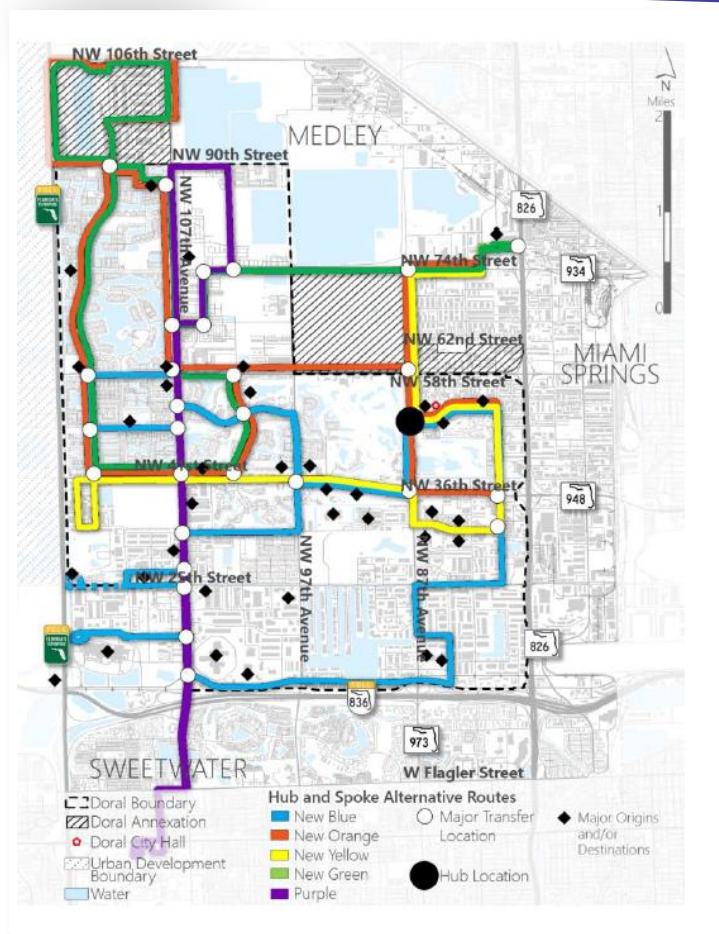
Future Trolley Expansion



- **New Route connecting:**
 - Palmetto Metrorail Station
 - UM Ambulatory Care Center
 - Baptist Health Hospital
 - Baptist Health Urgent Care
 - Jackson West Medical Center
- **Along the future revitalized NW 84th Avenue**



Future Potential Trolley Expansion



- **'Hub & Spoke'** Alternative
- **Recommended Alternative** from Study conducted
- Creates **Central Hub** in **Downtown Doral**
- **Hub** will provide connections with transfer location
- **Connectivity** with Regional Transit services (i.e. Metrobus, Metrorail, Freebee service)
- Increased **Coverage** with little change to Route lengths

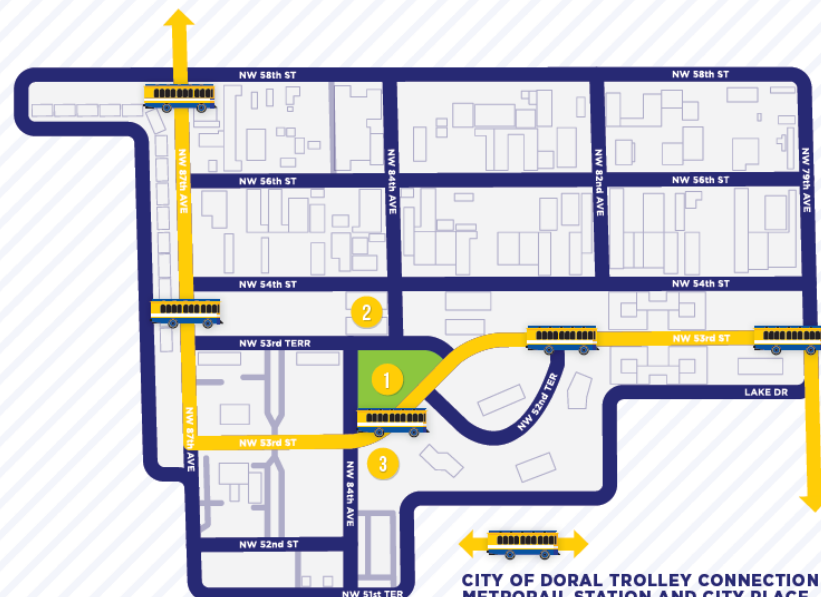


Freebee Pilot Program



SERVICE AREA

PICK-UP / DROP-OFF ANYWHERE
WITHIN THESE BOUNDARIES



POINTS OF INTEREST

- 1 Downtown Doral Park
- 2 City of Doral - Government Center
- 3 Downtown Doral Charter Elementary School

CITY OF DORAL TROLLEY CONNECTION TO METROLINK STATION AND CITY PLACE

ROUTE 2 SERVICE HOURS
Weekdays 6:00am to 9:38pm
Saturdays 6:50am to 7:53pm
No Service on Sundays

For easy connections to the Palmetto Metrolink Station and City Place, Freebee will connect you to the closest City of Doral trolley stop along 53rd St.

➤ 6-Month Pilot Program

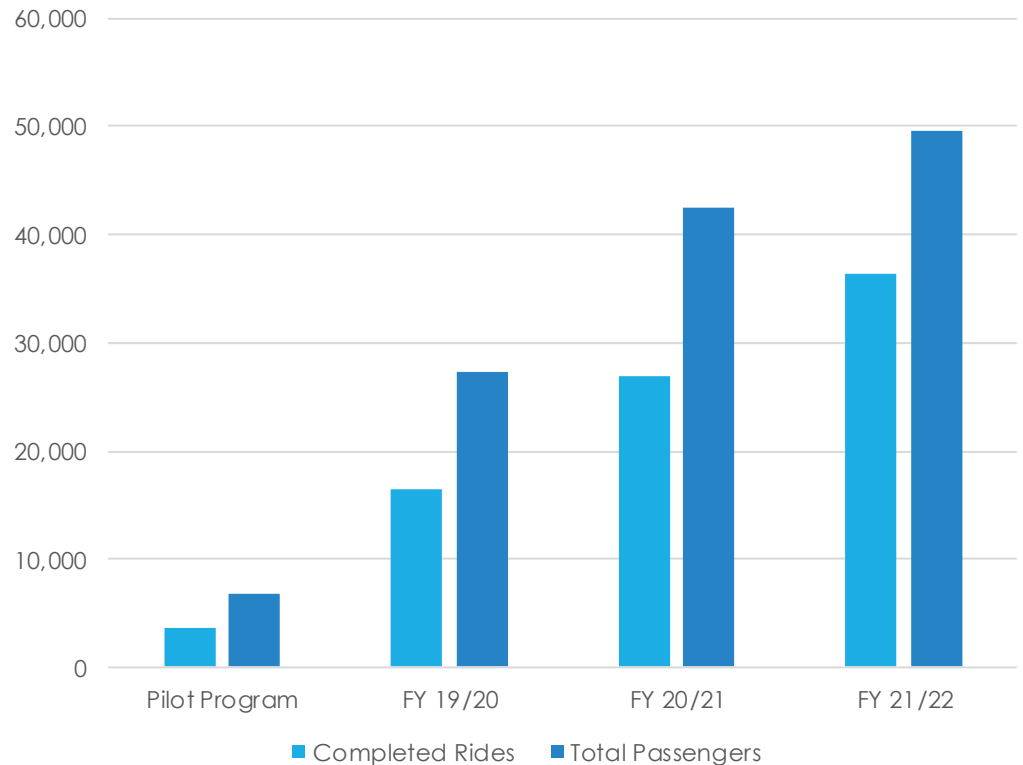
- Started April 1, 2019
- Extended to October 31, 2019
- Downtown Doral
- Monday - Friday
- 11:00 AM to 7:00 PM





Freebee Ridership

Month	Completed Rides	Total Passengers
Pilot Program	3,642	6,878
FY 19/20	16,436	27,269
FY 20/21	26,976	42,402
FY 21/22	36,452	49,631





Freebee Ridership

- One year contract extension
- Larger coverage area serviced with Tesla Model X vehicles
- Vehicles have been ordered
- New service expected to commence by end of the year





Freebee

HOW IT WORKS

1



REQUEST A RIDE

Tap the "Request a Pickup" button on the home screen of the Ride Freebee app

2



SET YOUR PICKUP LOCATION

Drop your pin exactly where you would like to be picked up

3



BROWSE OUR "PLACES TO BEE"

Search your destination by category and find the perfect spot with an awesome Freebee deal!

4



SELECT YOUR DESTINATION

Lock in your selection and let us know where you'd like to go!

5



ENJOY THE RIDE

Snap some photos of your experience and share them to "The Hive"

6



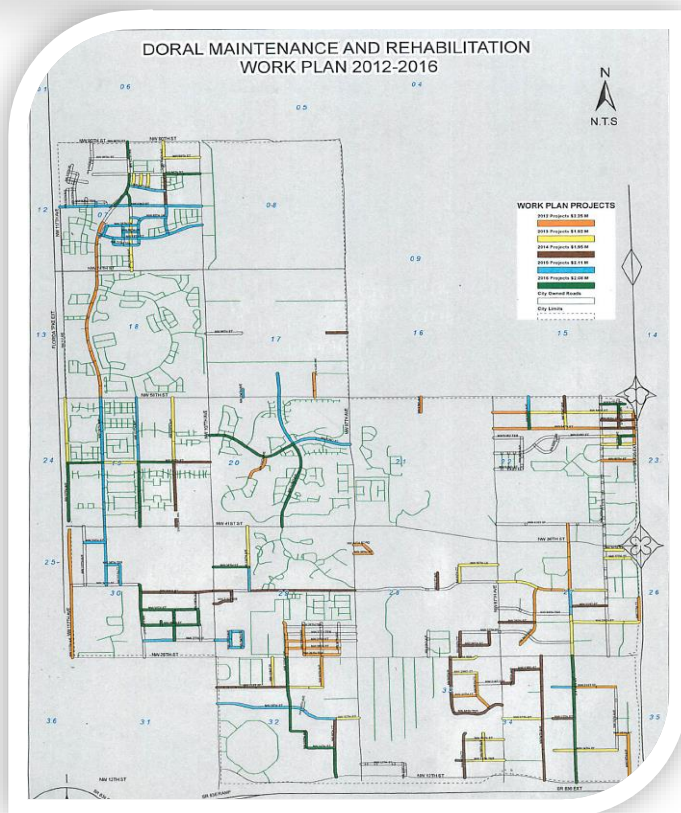
REDEEM YOUR FREEBEE DEAL

Once you've reached your destination, present your app deal to the manager on duty. "Mark Offer As Used" to redeem!

Transportation



Roadway Maintenance and Rehabilitation



2012 - 2016



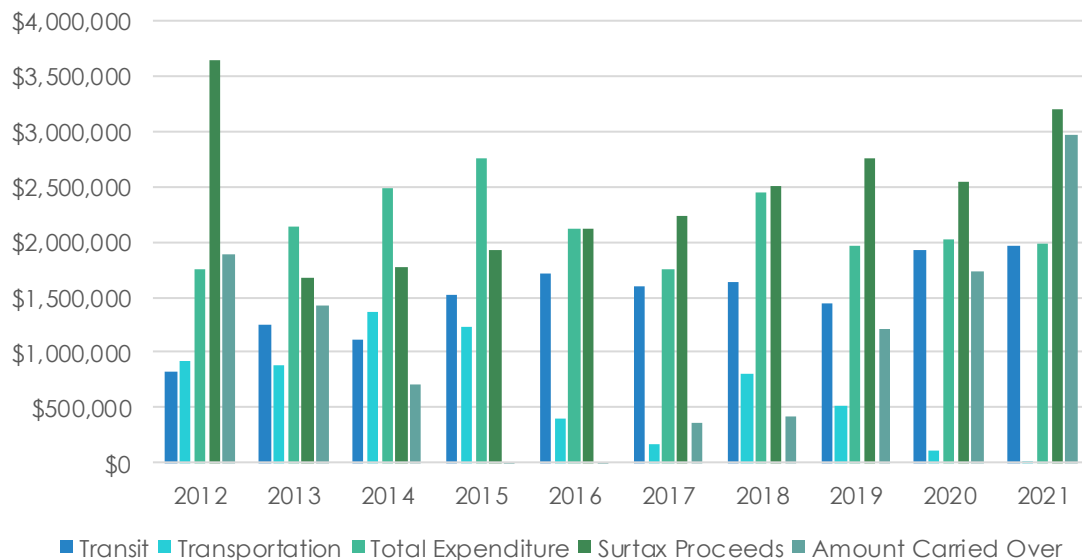
2017 - 2021

Surtax Funds



City of Doral Surtax

Description/Year	2012	2013	2014	2015	2016	2017	2018	2019	2020	2021	Total
Transit	\$ 830,284	\$ 1,246,435	\$ 1,117,179	\$ 1,526,481	\$ 1,712,274	\$ 1,595,067	\$ 1,635,000	\$ 1,436,305	\$ 1,924,689	\$ 1,964,315	\$ 14,988,029
Transportation	\$ 925,615	\$ 886,501	\$ 1,363,727	\$ 1,223,164	\$ 408,676	\$ 159,315	\$ 809,281	\$ 519,240	\$ 104,377	\$ 10,622	\$ 6,410,518
Total Expenditure	\$ 1,755,899	\$ 2,132,936	\$ 2,480,906	\$ 2,749,645	\$ 2,120,950	\$ 1,754,382	\$ 2,444,281	\$ 1,955,545	\$ 2,029,066	\$ 1,974,937	\$ 21,398,547
Surtax Proceeds	\$ 3,642,653	\$ 1,667,049	\$ 1,767,800	\$ 1,925,900	\$ 2,120,606	\$ 2,232,433	\$ 2,508,437	\$ 2,747,033	\$ 2,551,901	\$ 3,196,639	\$ 24,360,451
Amount Carried Over	\$ 1,886,754	\$ 1,420,867	\$ 707,761	\$ (115,984)	\$ (116,328)	\$ 361,723	\$ 425,879	\$ 1,217,367	\$ 1,740,202	\$ 2,961,904	-

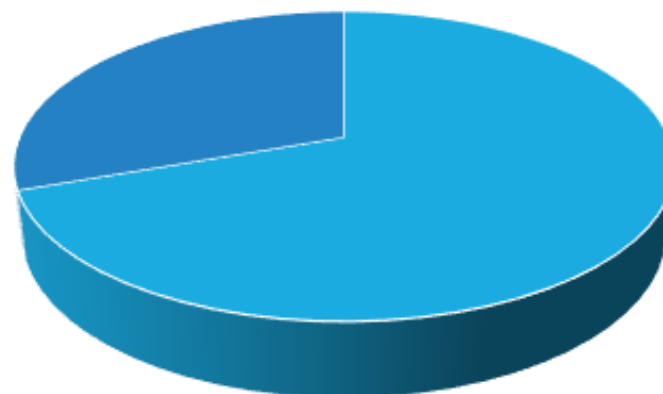




City of Doral Expenditures

	2012-2021
Transit	\$14,988,029 (70%)
Transportation	\$6,410,518 (30%)
Total	\$21,398,547

Total Expenditures



■ Transit ■ Transportation

Questions

