

EXISTING LAND USE MAP
MIAMI-DADE COUNTY, FLORIDA

- Single-Family
- Two-Family Duplexes
- Mobile Home Parks
- Townhouses
- Low-Density Multi-Family
- High-Density Multi-Family
- Residential-Government Owned Housing
- Transient-Residential (Hotels, Motels)
- Commercial, Shopping Centers, Stadiums
- Office
- Mixed Use-Business/Residential
- Institutional
- Industrial Extraction
- Industrial
- Industrial Intensive, Office type of use
- Industrial intensive, Commercial Condominium type of use
- Airports, Ports
- Communications, Utilities, Terminals
- Streets, Roads, Expressways, Ramps
- Streets, Expressway R/W
- Agriculture
- Parks, Preserves, Conservation Areas
- Water Conservation Areas
- Vacant Government Owned, Unprotected
- Vacant, Protected, Privately Owned
- Vacant, Protected, Government Owned
- Vacant Privately Owned, Unprotected
- Canal right-of-way
- Inland Waters
- Ocean, Bay Waters

- EXPRESSWAYS
- MAJOR ROADS
- MINOR ROADS
- STREETS
- URBAN DEVELOPMENT BOUNDARY 2011

SW 184TH ST

SW 200TH ST

SW 216TH ST

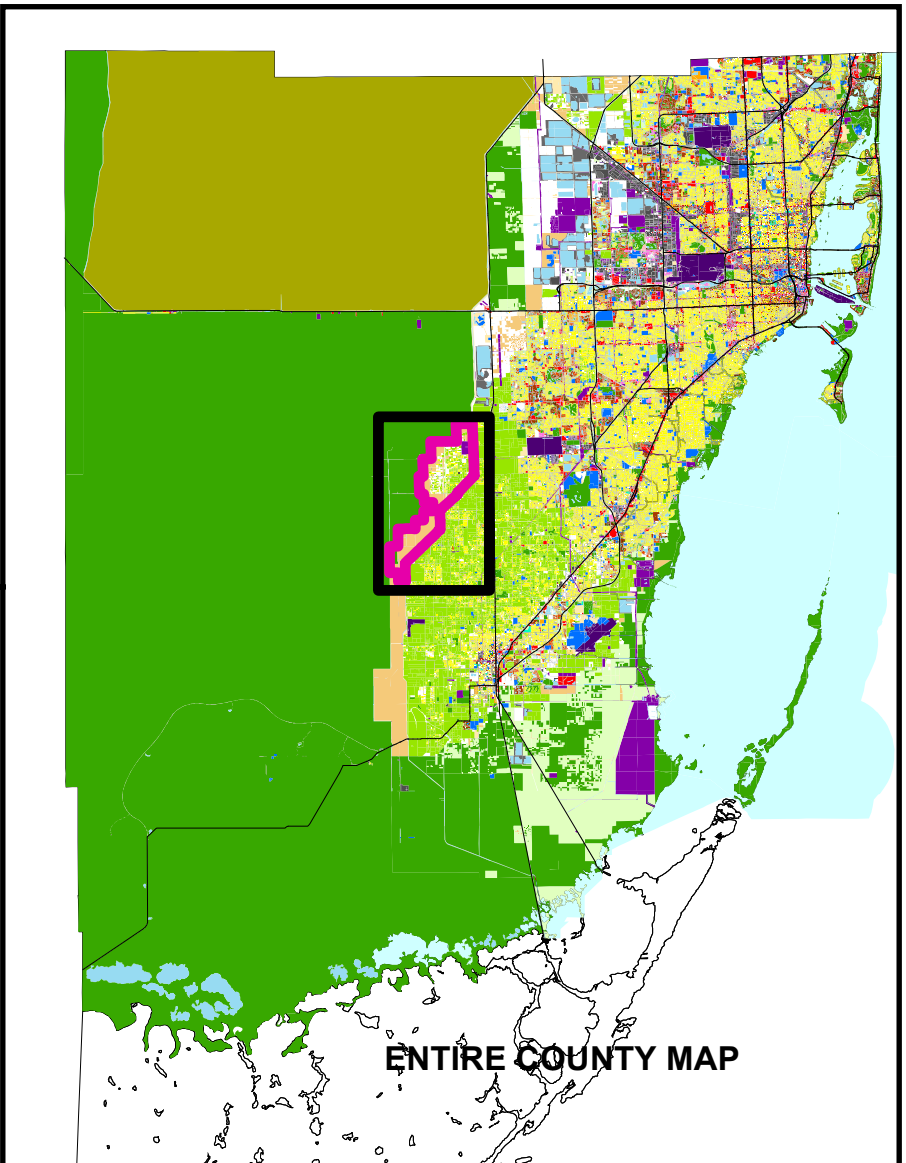
SW 217TH AVE

SW 182ND AVE

SW 256TH ST

MIAMI-DADE COUNTY MAYOR CARLOS A. GUALBERTO			
BOARD OF COUNTY COMMISSIONERS			
Joe A. Martinez/Chairman Audrey M. Edmonson Vice-Chairwoman			
Barbara J. Jordan District 1	Lynnda Bell District 8		
Juan Morsellino District 2	Dennis C. Moss District 9		
Audrey M. Edmonson District 3	Sen. Javier D. Suarez District 10		
Sally A. Heyman District 4	Joe A. Martinez District 11		
Bruno A. Barrios District 5	Jose "Pepe" Diaz District 12		
Patricia Diaz District 6	Estelita Bova Jr. District 13		
Xavier L. Suarez District 7			
Harvey Rios Clerk of Courts Pedro Garcia Property Appraiser Alma T. Pagan County Manager Robert A. Guevara Jr. County Attorney			
Prepared by the Department of Sustainability, Planning and Economic Enhancement Jack Osterholt, Interim Director			
Miami-Dade County promotes equal access and equal opportunity in employment and services and does not discriminate on the basis of ancestry.			

SCALE
0 1 2
In Miles



SUSTAINABILITY, PLANNING AND ECONOMIC
ENHANCEMENT DEPARTMENT

Delivering Excellence Every Day

MAY 2012

EXISTING LAND USE MAP AREA 1
MIAMI-DADE COUNTY