

Memorandum



Date: April 21, 2026

To: Honorable Chairman Anthony Rodriguez
and Members, Board of County Commissioners

From: Daniella Levine Cava *Daniella Levine Cava*
Mayor

Agenda Item No. 3(B)(6)

Subject: Resolution Retroactively Approving the Submittal of a Grant Application to the Florida Department of Transportation for up to \$8,742,899.00 for 2023 Shared-Use Non-motorized (SUN) Trail Program: Biscayne-Everglades Trail-Homestead to Everglades Segment 8 Connection

Executive Summary

Resolution retroactively approving the submittal of a grant application to the Florida Department of Transportation-Shared-Use Non-motorized (SUN) Trail Grant Program in the amount of \$8,742,899.00. This request is for funding to support the construction and CEI of a 4.5-mile segment of the Biscayne Trail, between W. Mowry Dr. at SW 192nd Ave. and the intersection of the C-113 and C-111 Canals, west of Homestead, FL. The proposed route follows W. Mowry Dr. and SW 197th Ave., then parallel the C-113 Canal westward to the C-111 Canal. The design and implementation of this segment will be coordinated with the City of Homestead's segment to the East; and further authorizing the County Mayor or County Mayor's designee to accept and expend funds and execute contracts, amendments, and other documents as required by the agreement. A contract has not been executed. However, this grant has been awarded to receive \$8,742,899.00 for construction programmed in the Florida Department of Transportation Work Plan Program for Fiscal Year (FY 2030).

Recommendation

It is recommended that the Board of County Commissioners (Board) retroactively approves the grant application for Florida Department of Transportation 2023 Shared-Use Non-motorized (SUN) Trail Program funds totaling \$8,742,899.00 for Biscayne-Everglades Trail-Homestead to Everglades Segment 8 Connection (Attachment A). It is further recommended that the Board authorize the County Mayor or County Mayor's designee to receive and expend funds and execute grant agreements upon review and final approval of the County Attorney's Office.

Scope

Construction and CEI of a 4.5-mile segment of the Biscayne Trail, between W. Mowry Dr. at SW 192nd Ave. and the intersection of the C-113 and C-111 Canals, west of Homestead, FL. The proposed route follows W. Mowry Dr. and SW 197th Ave., then parallel the C-113 Canal westward to the C-111 Canal. The design and implementation of this segment will be coordinated with the City of Homestead's segment to the east within District 9, represented by Vice Chairman Kionne L. McGhee.

Delegation of Authority

This item authorizes the County Mayor or County Mayor's designee to execute grant award agreements, amendments and other documents the grant requires, following approval by the County Attorney's Office as to legal sufficiency; provided however that the County Mayor or Mayor's designee are only delegated the authority to execute amendments that do not have an additional fiscal impact on the County and that

otherwise are for projects eligible under the Florida Department of Transportation. The Board authorizes the County Mayor or Mayor's designee to receive and expend all monies for the purposes described in the funding request for and on behalf of Miami-Dade County, Florida.

Fiscal Impact/Funding Source

The County's estimate for the Biscayne-Everglades Trail-Homestead to Everglades Segment 8 Connection project is \$11,191,531.00. FDOT has awarded funds up to \$8,742,899.00. Match funding in the amount of \$2,448,632.00 will come from Park Impact Fees, as authorized within the Department's Multi-year Capital Plan program titled Local Park Development-Park Benefit District (PBD) No. 2 as listed in the FY 2025-26 Adopted Budget Book page number 252.

Track Record/Monitor

PROS has been awarded \$4,379,462.00 in funds through FDOT's SUN Trail Program in the past seven years. The proposed grant will be administered by PROS Grants Supervisor Dorothy Mills-Mayers.

Background

The Florida Department of Transportation Shared-Use Non-motorized (SUN) Trail Program was established in 2015, under Section 339.81, Florida Statutes. Administered by FDOT, the SUN Trail program provides funding for closing gaps in the statewide system of paved non-motorized for bicyclists and pedestrians (SUN Trail network). This SUN Trail network is a refined version of the Florida Greenways and Trails System Plan's Land Trail Priority network; it includes high priority, strategic trail corridors and connections. The application was due December 20, 2023, and was submitted December 15, 2023. There was insufficient time from the opportunity announcement to the grant deadline to obtain a resolution, and an adopted resolution was not required by the funding agency for the application submittal. A contract has not been executed. However, this grant has been awarded to receive \$8,742,899.00 for construction programmed in the Florida Department of Transportation Work Plan Program for Fiscal Year (FY 2030).

Attachment: Grant Application for Florida Department of Transportation 2023 Shared-Use Nonmotorized Trail Program



Roy Coley
Chief Utilities and Regulatory Services Officer

Florida Department of Transportation Shared-Use Nonmotorized (SUN) Trail Program
Request for Funding



To be eligible for consideration applicants must APPLY during an open solicitation cycle online at: flgap.com by submitting a complete REQUEST FOR FUNDING with all applicable project information, including required signatures and documentation for each eligible unfunded project phase through the Grant Application Process online system (GAP) [FDOT Procedure 525-010-300 Chapter 4]. FDOT will not accept nor consider late proposals or any proposal not meeting and satisfying the provisions and SUN Trail Eligibility Criteria.

PART III – ELIGIBILITY CRITERIA

1. Funding is limited to geographic areas within the SUN Trail network [which aligns with the Florida Greenways and Trails System Plan's Priority Land Trail network, overseen by the Department of Environmental Protection's Office of Greenways and Trail (Chapter 260, F.S.) and includes connections to and through lands of the Florida Wildlife Corridor Act (Section 259.1055, F.S.)] and will be developed as a paved nonmotorized multi-use trail / two directional Shared Use Path (SUP) for bicyclists and pedestrians. Will the project be developed as a paved nonmotorized multi-use trail / two-directional SUP within the SUN Trail network for bicyclists and pedestrians?
 Yes No
 - a. **Provide an aerial location map illustrating the project boundary and project limits.**
 - b. **Provide a map illustrating the project location within the SUN Trail network.**
 - c. **Provide the project typical section** (this should be a pdf of the typical section schematic depicting existing and proposed features, dimensions, and right-of-way lines).

2. Funding is limited to projects prioritized by the applicable authority. If the project is within a boundary of a Metropolitan Planning Organization (MPO) priority, Section 339.175(8), Board of County Commissioners functions as MPO in nonmetropolitan areas, Section 339.135(4)(c)1, F.S.
 Yes No
 - a. Indicate the priority number of the project:
 Segment 8 LRTP Pg. 07-92 Unfunded from C-111 Canal to North Fl.
 - b. **Provide the prioritization list.**
 - c. **Complete Part VII (CERTIFICATION OF PROJECT PRIORITIZATION).**

3. Has a non-FDOT governmental entity formally committed to operation and maintenance of the project (long-term trail manager)?
 Yes No
 - a. **Complete Part VIII (CERTIFICATION OF WILLING MANAGER).**

4. Is the project consistent with the applicable comprehensive plan(s), transportation plan(s), or the long-term management plan(s)?
 Yes No
 - a. Indicate the type of plan(s), applicable page number(s) and date(s) of adoption:
 2045 LRTP (unfunded section), 9/26/2019, Miami-Dade County Parks and Open Space System Master Plan, 244
 - b. **Provide documentation of applicable project concurrency information** [e.g. supporting resolution(s), excerpt from comprehensive plan(s), transportation plan(s), unit management plans, etc.].

DO NOT PROCEED TO PART IV IF PROJECT RESULTED IN A "NO" RESPONSE IN PART III.


PART IV – PROJECT DETAILS

1. Project Tier:
 - a. Is the project within the Coast to Coast Trail (C2C)?
 Yes No
 - b. Is the project within the St. Johns River-to-Sea Loop (SJR2C)?
 Yes No
 - c. Is the project an Individual Trail segment?
 Yes No

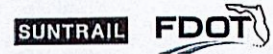
2. Will the project be developed as a 12-foot-wide asphalt trail?
 Yes No

3. Briefly describe the scope and proposed route of the project (1000-character limit):

This request is for funding to support the construction and CEI of a 4.5-mile segment of the Biscayne Trail, between W. Mowry Dr. at SW 192nd Ave. and the intersection of the C-113 and C-111 Canals, west of Homestead, FL. The proposed route follows W. Mowry Dr. and SW 197th Ave., then parallel the C-113 Canal westward to the C-111 Canal. The design and implementation of this segment will be coordinated with the City of Homestead's segment to the east.

The Biscayne Trail is part of a larger effort to implement the Biscayne-Everglades Greenway (BEG), a 43-mile route in Southern Miami-Dade County that will provide non-motorized trail facilities between the two National Parks the 
4. Have earlier phase(s) of this project been completed? If not, select "no" and continue to Question 5.
 Yes No
 - a. Select all project phases that were previously funded, indicate the funding year and completion date (or anticipated completion date for the funded phase).
 - Feasibility Study
 - Project Development & Environment (PDE)
 - Preliminary Engineering/Design (PE)
 - Acquisition of Right-of-Way (ROW)
 - Construction (CON)* only select for reconstruction/maintenance projects
 - b. Have federal funds been used in the project boundary?
 Yes No
 - c. As applicable, indicate the source of the federal allocation(s).
 - d. Have FDOT funds been used in the project boundary?
 Yes No
 - e. As applicable, indicate FDOT financial management number(s).

5. Indicate the **proposed** method of performing and administering this project:
 - Project to be locally administered (non-FDOT administered).
 - Project to be administered by FDOT.



A responsible estimate of the project costs is required prior to adoption in the Department's Five-Year Work Program. Use Present Day Cost values. Projects must follow appropriate design criteria and meet Americans with Disabilities Act requirements. Fill out summary of proposed timeline and funding needs, then complete the SUN Trail Cost Estimate (Excel) and upload it to GAP.

PART V – PROJECT COSTS

1. Funding Phase(s) requested:
 - Feasibility Study (FS) – FDOT Work Program Fund Code: 1x
 - Project Development & Environment Study (PDE) – FDOT Work Program Fund Code: 2x
 - Preliminary Engineering/Design (PE) – FDOT Work Program Fund Code: 3x
 - Acquisition of Right-of-Way (ROW) – FDOT Work Program Fund Code: 4x
 - Construction (CON) – FDOT Work Program Fund Code: 5x
 - Construction Engineering & Inspection Activities (CEI) – FDOT Work Program Fund Code: 6x

2. Summary of proposed timeline and funding needs:

PHASE	PROPOSED YEAR(S)	AMOUNT(S) REQUESTED	MATCHING FUNDS	TOTAL PROJECT COSTS	SOURCE(S) OF OTHER FUNDS
FS					
PDE					
PE					
ROW					
CON	2029	7,267,580.37	2,703,974.10	10,840,855.48	
CEI	2029	869,301.00			
TOTAL		\$ 8,136,881.37	\$ 2,703,974.10	\$ 10,840,855.48	\$ 0.00

3. Upload the SUN Trail Cost Estimate to GAP.

For more information refer to the Request for Funding Guidance.

Projects are not required to meet all of the following selection criteria. A numerical ranking will not be calculated, projects with the greatest strengths will advance more quickly.

PART VI – SELECTION CRITERIA

1. Does the project enhance the safety of bicyclists, pedestrians, and motorists?
 Yes No

If yes, check applicable attributes and briefly describe how the project meets the selection criteria.

- Project includes a safety element.
 The location of the project is within a hazardous biking/walking zone or in an area with significant numbers of safety concerns.
 Project implements a bicycle and pedestrian safety action plan. Give the name of the plan and date of adoption.

- Other (list)

The project will provide a dedicated path and safety improvements at intersections.

Briefly describe how the project enhances the safety of bicyclists, pedestrians and motorists. (1000-character limit):

The Biscayne Trail is part of the larger Biscayne-Everglades Greenway, which is in turn part of Miami-Dade's planned network of over 500 miles of interconnected trails. These facilities will provide bicyclists, pedestrians, and other non-motorized transportation users with safe, dedicated infrastructure that is physically separated from vehicular traffic. The Biscayne Trail will provide users with an alternative route that minimizes potentially dangerous interactions with vehicles. The project is located in an area that has historically been dominated by

2. Is the project recognized as having regional, state, or national importance?
 Yes No

If yes, check applicable attributes and briefly describe how the project meets the selection criteria.

- Project is a part of a Regional Trail System prioritized by the Florida Greenways and Trails Council.

The project is part of the Florida Greenways and Trails Council Land Trail Priority Corridors.

- Project is a part of a National Recreational Trail, East Coast Greenway or a trail that has other national importance.

- Project implements an adopted regional bicycle, pedestrian, or trail master plan. Give the name of the regional plan(s).

2045 LRTP, 2045 Bicycle Pedestrian Master Plan, Miami-Dade County Open Space Master Plan

- Other (list)

South Dade Greenways Master Plan, Miami LOOP (Rails to Trails Conservancy), Biscayne-Everglades

Briefly describe how the project is recognized as having regional, state, or national importance (1000-character limit):

This project furthers the development of the Biscayne-Everglades Greenway, which is regarded as the first non-motorized trail in the country to connect two National Parks-Everglades National Park and Biscayne National Park. Ultimately, the Biscayne-Everglades Greenway will provide residents and visitors with a unique opportunity to experience South Florida's environmental and cultural resources.

Florida Department of Transportation Shared-Use Nonmotorized (SUN) Trail Program

Request for Funding



3. Is there a non-SUN Trail financial contribution (match dollars) committed to this specific project being proposed for SUN Trail funding (select the most appropriate response)?
- Funds are leveraged by multiple public/private sources of investments dedicated to this specific project segment (e.g. federal, state, local, non-profit, private landowner contributions).
If yes, what is the total percentage of match?

What are the sources?

- Funds are leveraged by at least one more public/private source of investment dedicated to this specific project segment.

If yes, what is the total percentage of match?
25%

What is the source?

Park Impact Fees, as authorized within the Department's Multi-year Capital Plan Program

- Funds are not leveraged by public/private sources of investments dedicated to this specific trail segment (matching funds are not available for this project).

4. Does the project blend transportation modes by completing, improving, or enhancing existing facilities?
 Yes No

If yes, check applicable attributes and briefly describe how the project meets the selection criteria.

- Project implements Complete Streets goals and initiatives.
- Project implements Safe Routes to Schools goals and initiatives.
- Project provides a direct connection to regional transit systems (e.g. rail stations, express or local bus routes).
- Project is in a designated multi-modal district.
- Project has the potential to reduce vehicular congestion.
- Project improves access in a Bicycle Friendly Community or Bicycle Friendly University, as designated by the League of American Bicyclists. If yes, indicate the name of the designated community or university:

Miami-Dade County

- Project improves access in a Walk Friendly Community, as designated by the Pedestrian and Bicycle Information Center. If yes, indicate the name of the designated community:

Miami-Dade County

- Other (list)

The project will provide a transportation alternative to vehicular travel for many users with a range

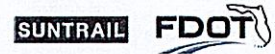
Briefly describe how the project blends transportation modes (1000-character limit):

The Complete Streets approach is to provide safe, convenient, equitable, and accessible transportation options for users of all ages and abilities. This project will provide dedicated space for non-motorized modes of transportation where none currently exist and enhance existing county roadways that currently prioritize vehicular use. Additionally, The Biscayne Trail will provide access to a route along the C-113 canal that has not been open to most users in the past.

This project will provide a connection, via funded segments of the Biscayne Trail through Homestead, to the

Florida Department of Transportation Shared-Use Nonmotorized (SUN) Trail Program

Request for Funding



5. If proposing construction funding, select the most appropriate response:
- Project is ready for immediate construction and all pre-construction phases are complete.
 - Project is capable of near-term development; the design is nearly complete and permitting is underway.
 - The Project Development and Environment Study (PDE) is complete/nearly complete.
 - None of the above statements are true.

6. Does the project have documented public support?
 Yes No

If yes, select from the following and briefly explain how the project meets the selection criteria.

- The greater community supports the project as demonstrated by recently adopted proclamations or resolutions expressing commitment. Give the resolution number, adopted date and participating parties.
- Demonstration of public support is consistent across multiple entities representing the greater community rather than a select few interest groups. Briefly explain. (100-character limit):
The project contributes to the implementation of the Open Space Master Plan; driven by community input.
- Recent community surveys indicate both need and support for the project. Briefly explain. (100-character limit):
- An advertised public meeting for discussing the project occurred. Give the date and type of meeting.
BEG Preferred Corridor Concept Plan held community workshops on 3/22/07 & 6/22/06 for public engagement.
- Other (list)
BEG AIA design project included a public workshop on 3/24/07. See Exhibit 6-8 Letters of Support

7. Does the project have a significant immediate impact to the quality of life by enhancing economic opportunities and providing connectivity to destinations?
 Yes No

If yes, check applicable attributes and briefly describe how the project meets the selection criteria.

- The project connects to or through federal, state, or local conservation/recreation areas. List public lands.
- The project connects people to jobs, businesses, or civic resources.
- The project is along or connects to a Florida Scenic Highway. List the Scenic Highway(s).
- The project is within a Florida Trail Town as designated by the Florida Department of Environmental Protection.
- The project is part of a public/private partnership where developers, linear corridor owners, small businesses, corporations, foundations, or private sector partners are directly supporting the project.
- The project is within a Rural Economic Development Initiative (REDI) Community defined pursuant to Section 288.0656, Florida Statutes. List the REDI area.
- The project is within a Rural Area of Opportunity (RAO) defined pursuant to Section 288.0656, Florida Statutes. List the RAO Area.
- Other (list)
The Biscayne Trail will connect people to regional tourism assets, agricultural area (and related jobs)



8. Does the project enhance or preserve environmental resources?
 Yes No

If yes, check applicable attributes and briefly describe how the project meets the selection criteria.

- The project's environmental impact assessment or statement did not identify specific issues.
- The project's environmental approval and permitting process is complete.
- The project restores or mitigates impacts of environmental degradation.
- The project incorporates water quality or drainage improvements.
- The project incorporates conservation initiatives to restore/maintain connectivity by reducing vehicle-caused wildlife mortality.
- The project ensures the Florida Ecological Greenway Network (FEGN) maximizes protection of high priority linkages and maximizes the use of previously disturbed lands. This project is within a FEGN Priority Linkages 1 – 3 and is compatible with lands of the Florida Wildlife Corridor Act (Section 259.1055, F.S.).

Briefly describe how the project enhances or preserves environmental resources.
(1000-character limit):

9. Does the project facilitate a system of interconnected trails by closing a gap in the SUN Trail network?
 Yes No

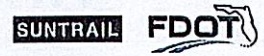
If yes, how many miles of connected trail, open to the public will be available once this specific project is complete?
80.8 miles (including this segment)

List the trail names:

Biscayne Trail/Biscayne-Everglades Greenway (22.5 miles) South Dade Trail (20 miles) The Underline

10. The project includes cost-saving elements.
 Yes No

If yes, briefly describe the potential for overall cost savings for completing this project in conjunction with another project (e.g. new/resurfacing roadway, redevelopment/new development project, trail phase/extending trail project). Provide the other project(s) scope and schedule, the funding source, the funding year, and if funding is through FDOT, provide the Financial Management Number.
(1000-character limit):



PART VII – CERTIFICATION OF PROJECT PRIORITIZATION

- 1. For projects within a MPO boundary, complete the following information. If the project is outside of a MPO boundary, continue to Part VII, question #2.

Name of Applicable MPO/TPO:
Miami-Dade Transportation Planning Organization

MPO/TPO Contact:
Aileen Bouclé

MPO Address:
150 West Flagler Street, Suite 1900

Municipality, State and Zip:
Miami, Florida 33130

Contact Email:
aileen.boucle@miamidade.gov

Contact Telephone Number:
305-375-4507

Signature:

Aileen Bouclé

Digitally signed by Aileen Bouclé
Date: 2023.12.12 13:09:46 -05'00'

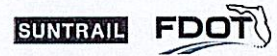
Print Name:
Aileen Bouclé

Title:
Executive Director

Date:
12/12/2023

Your signature confirms the requested project is (1) consistent with MPO/TPO plans and documents; (2) it is an eligible priority of the MPO/TPO, (3) the MPO/TPO supports the project; and (4) you possess authorization to sign the certification of project prioritization.

Florida Department of Transportation Shared-Use Nonmotorized (SUN) Trail Program
Request for Funding



2. For projects outside of a MPO boundary, complete the following information:

County Name:

Contact Name:

Contact Address:

Municipality, State and Zip:

Contact Email:

Contact Telephone Number:

Signature:

Print Name:

Title:

Date:

Your signature confirms the requested project is (1) consistent with applicable county, municipality, comprehensive plan(s) and/or the long-term management plan(s) and documents; (2) it is an eligible priority of the County (tribal government, federal or state managing agency); (3) the applicable entity supports the project; and (4) you possess authorization to sign the certification of project prioritization.

Florida Department of Transportation Shared-Use Nonmotorized (SUN) Trail Program
Request for Funding



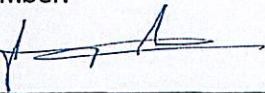
SUN Trail funded projects require a non-FDOT governmental entity formally committed to providing maintenance of the project (long-term trail manager). FDOT will enter into an agreement or other form of documented commitment with the entity to ensure that a local sponsor/agency is committed to long-term trail maintenance (long-term trail manager). The managing entity will be responsible for the day-to-day upkeep and daily operation; protection for the trail users; they will reduce safety hazards that occur; and they will ensure a quality level of service is maintained on the facility. Activities may consist of litter pick-up, trash removal, debris removal, soil and weed control, graffiti removal, mowing, sweeping, sign replacement, shrub trimming, maintenance of drainage, and other regularly scheduled maintenance activities. For trails constructed in the FDOT ROW, FDOT will provide remedial maintenance which involves repairing, replacing, or restoring major components that may have been damaged or destroyed. Minor repairs such as sealing asphalt pavement or repainting may occur every five to ten years, while major repairs may occur every 20 to 25 years. The area of responsibility will be the footprint of the trail within FDOT ROW as defined by the district. ALL other maintenance will be the responsibility of the non-FDOT governmental entity. **Submit the Certification of Willing Manager(s) for all proposed trail segments.**

PART VIII – CERTIFICATION OF WILLING MANAGER(S)

Name of Project:

FROM:

Name of Managing Entity:
Miami-Dade County Parks, Recreation and Open Spaces Department
Name of Contact and Job Title:
Maria I. Nardi, Director Miami-Dade County Parks, Recreation and Open Spaces
Address:
275 NW 2nd Street, 5th Floor
Municipality, State, and Zip Code:
Miami, Florida 33128
Contact Email:
maria.nardi@miamidade.gov
Contact Telephone Number:
(305) 755-7903

Signature: 

Print Name:
Jimmy Morales
Title:
Chief Operations Officer, Office of the Mayor
Date: 12/14/2023

Your signature serves as certification of (1) a commitment from your agency to maintain the facility requested and that your agency will enter into a Maintenance Memorandum of Agreement with the Department for the Project prior to the completion of design, or at the time of programming funding for any project proposed for a later phase; (2) the information in this "Request for Funding" is true and accurate; (3) to comply with the federal Uniform Relocation Assistance and Real Property Acquisition Policies Act (The Uniform Act) for any right-of-way actions required for the project; (4) to comply with the Americans with Disabilities Act; (5) lands developed with SUN Trail funds will be available for public use for the lifespan of the improvement; (6) support of other actions necessary to fully implement the proposed project; (7) and you possess authorization to sign the certification of the willing manager.

Miami-Dade County Parks, Recreation and Open Spaces Department



2023 FDOT Shared-Use Nonmotorized (SUN) Trail Program State of Florida Department of Transportation

Biscayne-Everglades Trail-Homestead to Everglades Connection

APPENDIX

PART III-ELIGIBILITY CRITERIA

Exhibit 3-1A	Project Location
Exhibit 3-1B	Existing Conditions
Exhibit 3-2	SUN Trail Location
Exhibit 3-3	Typical Sections
Exhibit 3-4	2045 LRTP
Exhibit 3-5	LRTP ADOPTION

PART IV-PROJECT DETAILS

Exhibit 4-6A	BEG Preferred Corridor Plan
Exhibit 4-6B	Project Schedule

PART V-PROJECT COSTS

Exhibit 5-6C Cost Estimate

PART VI-SELECTION CRITERIA

Exhibit 6-7 Dangerous By Design 2022
Exhibit 6-8 Letters of Support
Exhibit 6-9 Western Greenway Pages
Exhibit 6-10 FNAI Report
Exhibit 6-11 Trail Connectivity



Parks, Recreation, and Open Spaces Department
Planning Design & Construction Excellence

BISCAYNE TRAIL: HOMESTEAD TO EVERGLADES CONNECTION
2023 SUN Trail Request for Funding

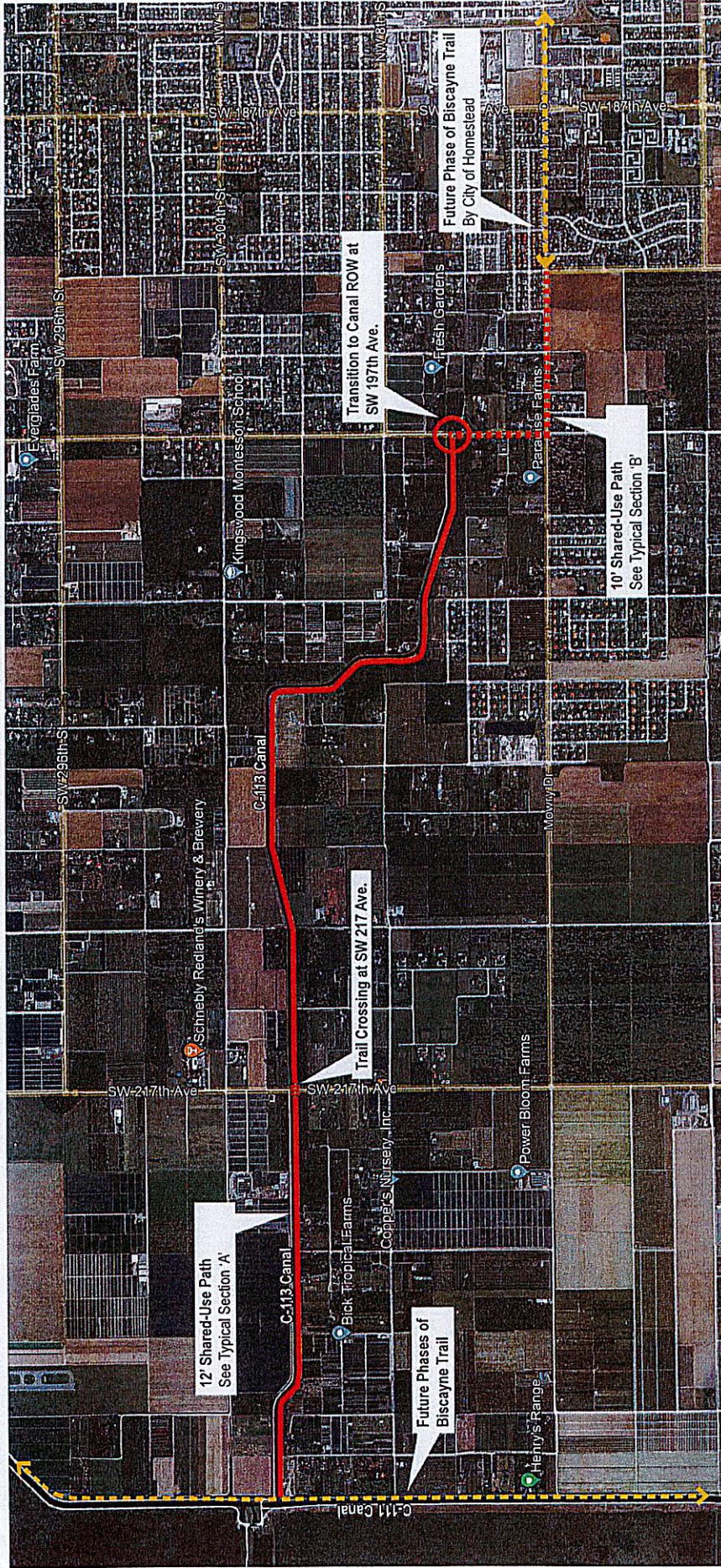


EXHIBIT 3-1A: PROJECT LOCATION
Biscayne Trail: Homestead to Everglades Connection



- 12' Shared-Use Path- Canal Right of Way
- Trail Crossing at Intersection
- 10' Shared-Use Path- Road Right of Way
- Trail/Right of Way Access Point
- Other Biscayne Trail Projects (not included in scope)



Parks, Recreation, and Open Spaces Department
Planning Design & Construction Excellence

BISCAYNE TRAIL: HOMESTEAD TO EVERGADES CONNECTION 2023 SUN Trail Request for Funding

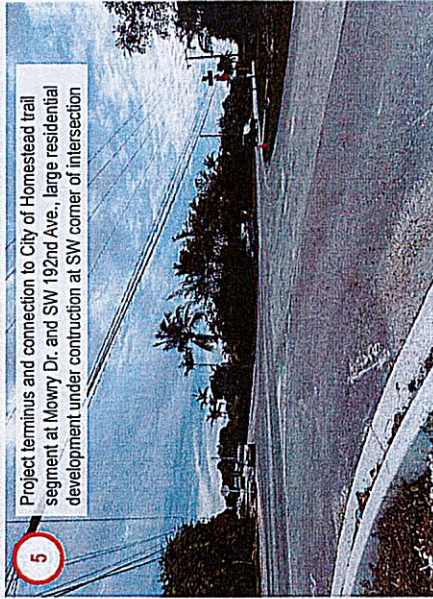
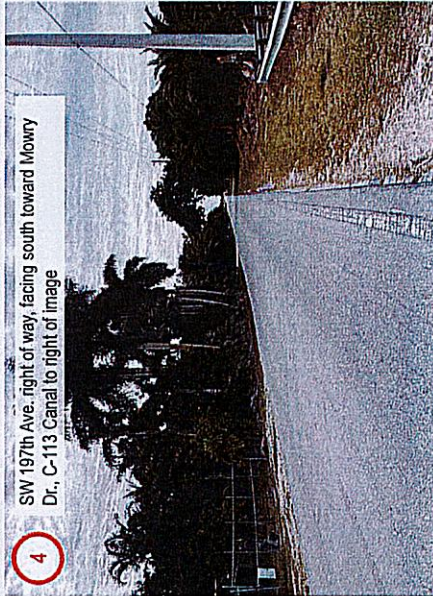
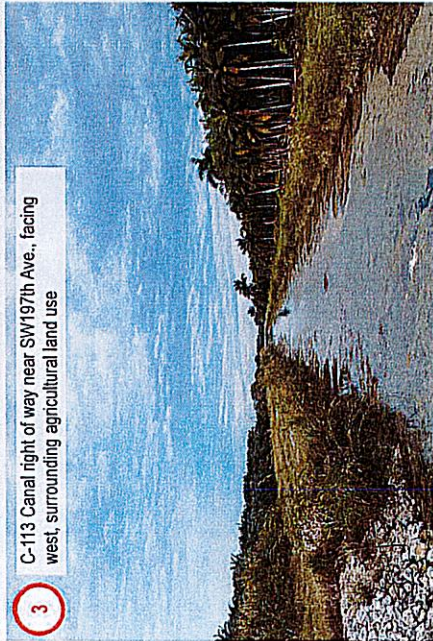
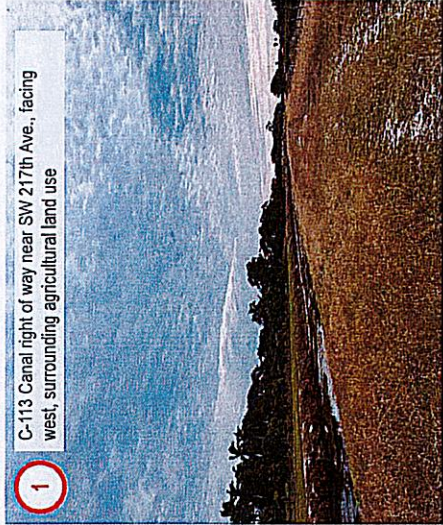
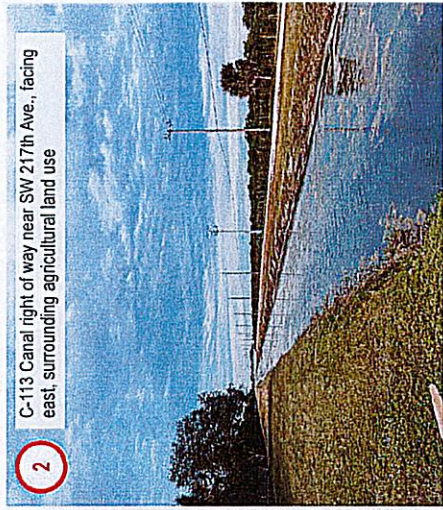
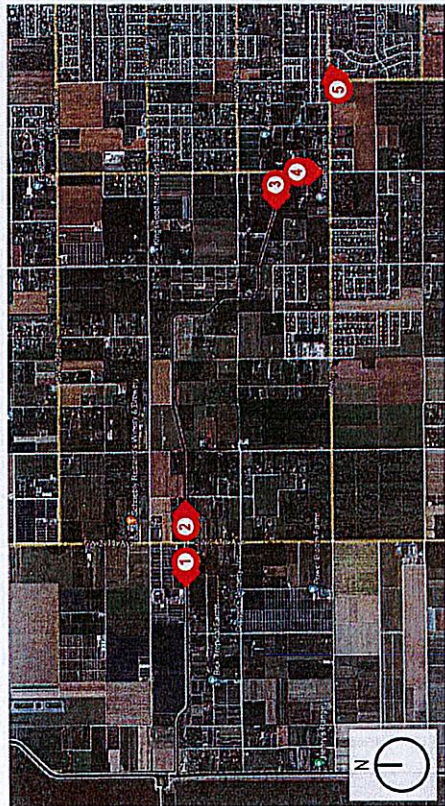
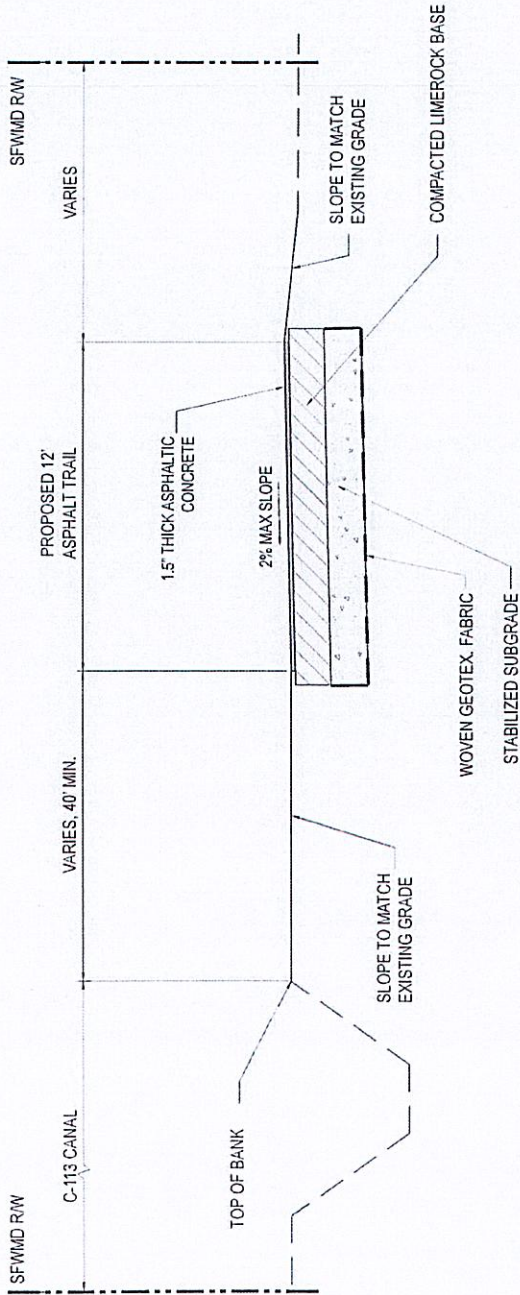


EXHIBIT 3-1B: EXISTING SITE CONDITIONS

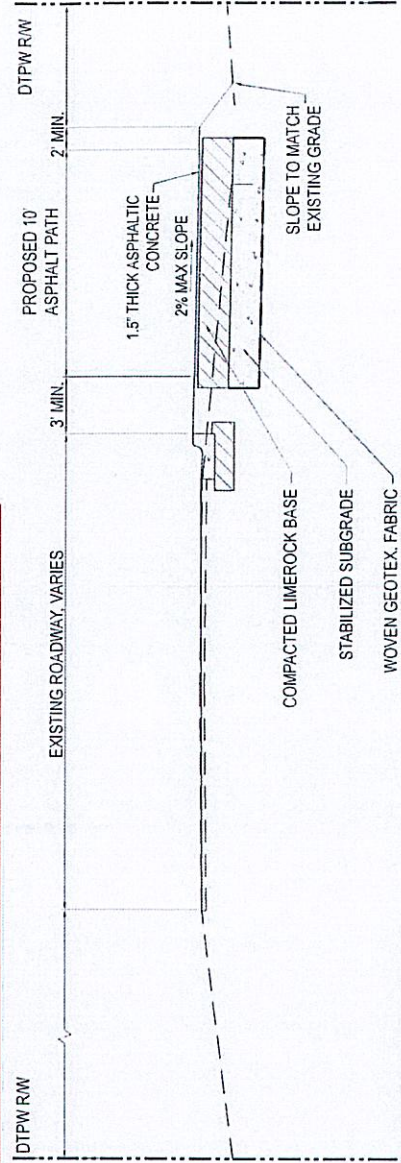


Parks, Recreation, and Open Spaces Department
Planning Design & Construction Excellence

BISCAYNE TRAIL: HOMESTEAD TO EVERGADES CONNECTION
2023 SUN Trail Request for Funding



PROS Typical Section 'A'
Trail Within Canal Right of Way (approx. 140')



PROS Typical Section 'B'
Trail Within Road Right of Way (approx. 110')

EXHIBIT 3-3: TYPICAL SECTIONS

07 MULTIMODAL SOLUTIONS

TABLE 7-9: BICYCLE AND PEDESTRIAN PROJECTS (CONTINUED)

FACILITY	LIMITS FROM	LIMITS TO	DESCRIPTION	TOTAL PROJECT COSTS (MILLIONS 2018 \$)
UNFUNDED PROJECTS				
SMART Terminal Connector - Venetian Causeway & 17 St	North Miami Ave	Convention Center Dr	Protected On-Road Bicycle Facility and Pedestrian Improvements	\$3,147.198
SR A1A (Collins Ave)	South Pointe Dr	26 St	Protected On-Road Bicycle Facility Improvement	\$2,078.278
SMART Terminal Connector - NW South River Dr & Delaware Pkwy	NW 27 Ave	Hook Square/SE 1 Ave	Protected On-Road Bicycle Facility and Pedestrian Improvements	\$3,269.507
SR A1A/5 St	Lenox Ave	SR 907 (Alton Rd)	Protected On-Road Bicycle Facility Improvement	\$63.443
SMART Terminal Connector - Convention Center Dr & Hill Tide Dr & Prairie Dr	17 St	West 47 St	Protected On-Road Bicycle Facility and Pedestrian Improvements	\$1943.088
Biscayne Everglades Greenway (Seg 4)	South Transit Way	Biscayne National Park	Trail Improvements	\$12,239.189
Dade Blvd Bike Path	Meridian Ave	Atlantic Trail/Beachwalk	Off-Road Bicycle and Pedestrian Facility Improvement	\$780.345
South 13 St/ Coral Way (SR 972)	SW 3 Ave	Brickell Ave	Dedicated On-Road Bicycle Facility Improvement	\$330.318
Biscayne Everglades Greenway (Seg 8)	C 111 Canal	North Flagler Ave	Trail Improvements	\$8,803.966
NW 2 Ave	NW 17 St	NW 20 St	Pedestrian Facility Enhancement or Expansion	\$27.795
Biscayne Everglades Greenway (Seg 7)	SW 378 St	East Mowry Dr	Trail Improvements	\$838.596
Biscayne Canal (C-8)	South of Biscayne Canal	North of Biscayne Canal	Pedestrian Bridge/Overpass	\$1,443.852
NW 17 St	NW 3 Ave	NW 7 Ave (SR 7/ US 441)	Dedicated On-Road Bicycle Facility Improvement	\$302.573
SMART Terminal Connector - SR 969 (NW 72 Ave /Millam Dairy Rd)/W 16 Ave	NW 47 St	NW 53 Ter	Protected On-Road Bicycle Facility and Pedestrian Improvements	\$3,215.040

TPO 47-19	RESOLUTION APPROVING AN AMENDMENT TO THE FISCAL YEAR 2020 TRANSPORTATION IMPROVEMENT PROGRAM (TIP) TO INCLUDE A RESURFACING PROJECT AT SIX LOCATIONS: ALONG NW 215 TH STREET FROM NW 29 TH AVENUE TO NW 47 TH AVENUE; ALONG BOB-LINK DRIVE FROM NW 186 TH STREET TO N AUGUST DRIVE; ALONG NW 62 ND AVENUE FROM NW MIAMI GARDEN DRIVE TO NW 194 TH STREET; ALONG NE 2 ND AVENUE FROM NE 119 TH STREET TO NE 135 TH STREET; ALONG NE 26 TH AVENUE FROM NE 203 RD STREET TO NE 215 TH STREET; AND ALONG NW 178 TH STREET FROM NW 78 TH PLACE TO NW 87 TH AVENUE, PROJECT NUMBER PW000045	9/26/2019
TPO 48-19	RESOLUTION ADOPTING THE MIAMI-DADE 2045 LONG RANGE TRANSPORTATION PLAN (LRTP)	9/26/2019
TPO 49-19	RESOLUTION URGING THE FLORIDA DEPARTMENT OF TRANSPORTATION (FDOT) TO INCLUDE THE NORTH CORRIDOR OF THE STRATEGIC MIAMI AREA RAPID TRANSIT (SMART) PLAN AS PART OF THE STATE STRATEGIC INTERMODAL SYSTEM	9/26/2019
TPO 50-19	RESOLUTION URGING THE FLORIDA DEPARTMENT OF TRANSPORTATION (FDOT) IF IT PROPOSES TO REMOVE FUNDING COMMITTED IN THE ADOPTED FDOT WORK PROGRAM FOR THE RECONSTRUCTION OF THE GOLDEN GLADES INTERCHANGE (GGI) AND STATE ROAD 826/PALMETTO EXPRESSWAY EAST/WEST PROJECTS TO ALLOCATE SAID FUNDS TO THE NORTHERN QUADRANT OF MIAMI-DADE COUNTY, SPECIFICALLY THE NORTH CORRIDOR OF THE STRATEGIC MIAMI AREA RAPID TRANSIT (SMART) PLAN	9/26/2019
TPO 51-19	RESOLUTION ENDORSING THE INTERNATIONAL "WALK TO SCHOOL DAY" SCHEDULED FOR OCTOBER 2, 2019	9/26/2019
TPO 52-19	RESOLUTION APPROVING AN AMENDMENT TO THE FISCAL YEAR 2020 TRANSPORTATION IMPROVEMENT PROGRAM (TIP) TO INCLUDE THE UNIVERSITY OF MIAMI-BIKESAFE MIDDLE SCHOOL BLUCS PROJECT, FM #446824-1	10/31/2019
TPO 53-19	RESOLUTION ADOPTING AS LEGISLATIVE PRIORITY AND URGING THE STATE TO SHIFT A PORTION OF TRANSPORTATION FUNDS ALLOCATED FOR USE IN MIAMI-DADE COUNTY TO INCLUDE THE ADVANCEMENT OF THE STRATEGIC MIAMI AREA RAPID TRANSIT PLAN	10/31/2019
TPO 54-19	RESOLUTION APPROVING AN AMENDMENT TO THE FISCAL YEAR 2020 TRANSPORTATION IMPROVEMENT PROGRAM (TIP) TO INCLUDE THE FLORIDA DEPARTMENT OF TRANSPORTATION (FDOT) DISTRICT SIX ROLL-FORWARD PROJECTS THAT WERE ORIGINALLY SCHEDULED IN FISCAL YEAR 2019 TIP FOR AUTHORIZATION AND WERE NOT OBLIGATED BY JUNE 30, 2019	10/31/2019
TPO 55-19	RESOLUTION SELECTING THE PREFERRED TRANSIT TECHNOLOGY FOR THE NORTH CORRIDOR OF THE STRATEGIC MIAMI AREA RAPID TRANSIT (SMART) PLAN	10/31/2019
TPO 56-19	RESOLUTION APPOINTING DENISE VALKEMA AND CORNELL CREWS, JR. TO THE MIAMI-DADE COUNTY TRANSPORTATION DISADVANTAGED (TD) LOCAL COORDINATING BOARD (LCB)	10/31/2019

Exhibit 3-5 LRTP Adoption

Shared-Use Nonmotorized (SUN) Trail Program

COST ESTIMATE

Financial Management Number (if applicable):
Project Description: Biscayne Trail Segment 10

Pay Item Number*	Items	SUN Trail Eligible				Other Funds (must include all SUN Trail Ineligible Items)				TOTAL		
		Quantity	Unit	Unit Cost	Subtotal Cost	Quantity	Unit	Unit Cost	Subtotal Cost (other funds)	Source(s) of Match	Total Quantity	Total Cost
0110-1-1	Site clear & grub	12.00	Acres	\$ 4,057.46	\$ 48,750.37				\$ -		12.015	\$ 48,750.37
0160-6	Stabilization type B	68,001.00	BY	\$ 4.64	\$ 269,329.51				\$ -		58,081.5	\$ 269,329.51
0399 1 / 0180 71	12" V ASPHALT & LIMESTOCK Shared use path (including 10% for waste material)	21,848.00	SY	\$ 73.03	\$ 2,545,098.13				\$ -		34,848	\$ 2,545,098.13
II/A	Provide US24-2 DeepFlood Barrier (including 10% for waste material)	82,272.00	LF	\$ 11.91	\$ 727,170.89				\$ -		52,272	\$ 727,170.85
0710-11111	Layout of pavement markings, along Shared use Path (3 Solid White Lines and 1 Broken Yellow Line)	95,040.00	LF	\$ 1.74	\$ 165,266.11				\$ -		95,040	\$ 165,266.11
0710-11201	1" V Thermoplastic paint along Bike Path	95,040.00	LF	\$ 1.74	\$ 165,266.11				\$ -		95,040	\$ 165,266.11
0710-11170	Layout and Paint of Pedestrian Directional Arrow Symbols on asphalt pavement, assumed 6-Each per Block	270.00	Ea	\$ 289.82	\$ 78,251.00				\$ -		270	\$ 78,251.04
II/A	ADA Benches		Ea	\$ -	\$ -	27.00	Ea	\$ 3,477.82	\$ 93,901.20		27	\$ 93,901.20
II/A	Bike Rack		Ea	\$ -	\$ -	9.00	Ea	\$ 985.38	\$ 8,868.45		9	\$ 8,868.45
II/A	Trash Receptacle		Ea	\$ -	\$ -	13.50	Ea	\$ 7,318.55	\$ 31,300.40		13.5	\$ 31,300.40
II/A	Water Fountain, including allowance, among others, for water connection and backflow preventer, trench excavation, pipe, fittings, and valves.		Ea	\$ -	\$ -	9.00	Ea	\$ 28,981.85	\$ 260,836.67		9	\$ 260,836.67
II/A	Wayfinding Signs		Ea	\$ -	\$ -	9.00	Ea	\$ 985.38	\$ 8,868.45		9	\$ 8,868.45
0700-1-75	Regulatory Signage Allowance		LS	\$ -	\$ -	4.50	LS	\$ 28,981.85	\$ 130,418.33		4.5	\$ 130,418.33
0580-1-1	Landscape, large caliper tree, (Large - 22-24 Feet) (Minimum 12-14 Feet)		Ea	\$ -	\$ -	301.50	Ea	\$ 1,738.91	\$ 524,281.70		301.5	\$ 524,281.70
0580-7-1	Provide top soil, fertilizer and soil, as needed	237,600.00	SF	\$ 1.74	\$ 413,165.28				\$ -		237,600	\$ 413,165.28
	Curb & Gutter	4,224.00	LF	\$ 28.58	\$ 122,419.34				\$ -		4,224	\$ 122,419.34
	Two rail fence	3	LS	\$ 11,593.74	\$ 34,778.22				\$ -		3	\$ 34,778.22
	Bollards	30	Ea	\$ 579.64	\$ 17,389.11				\$ -		30	\$ 17,389.11
	Accent planting and trees (8)		LS	\$ -	\$ -	3	LS	\$ 25,504.03	\$ 76,512.09		3	\$ 76,512.09
	Curb cut and ADA detectible warning surface (2)	3	LS	\$ 5,796.37	\$ 17,389.11				\$ -		3	\$ 17,389.11
	Ladder style thermoplastic crosswalk	3	LS	\$ 2,318.55	\$ 6,955.64				\$ -		3	\$ 6,955.64
	Pedestrian actuated crossing signal / Rect. Rapid Flashing Beacon	3	LS	\$ 28,981.85	\$ 86,945.56				\$ -		3	\$ 86,945.56
	Signage (2) [Trail Route ID, Trail crossing]		Ea	\$ -	\$ -	6	Ea	\$ 579.64	\$ 3,477.82		6	\$ 3,477.82
	Additional Items for Major crossing	1	Ea	\$ 3,477.82	\$ 3,477.82				\$ -		1	\$ 3,477.82
	General Requirement 10%	1	Ea	\$ 584,011.73	\$ 584,011.73				\$ -		1	\$ 584,011.73
	Bond & Insurance 2%	1	Ea	\$ 116,802.35	\$ 116,802.35				\$ -		1	\$ 116,802.35
	MOT 2.5%	1	Ea	\$ 146,002.93	\$ 146,002.93				\$ -		1	\$ 146,002.93
	Contingency (Contract) 10% Construction Base	1	Ea	\$ 668,693.43	\$ 668,693.43				\$ -		1	\$ 668,693.43
	Dedicated Allowance (Contract) 5% Construction base	1	Ea	\$ 334,346.72	\$ 334,346.72				\$ -		1	\$ 334,346.72
	Construction Management	1	Ea	\$ 106,602.00	\$ 106,602.00				\$ -		1	\$ 106,602.00
	Construction Testing Services	1	Ea	\$ 20,000.00	\$ 20,000.00				\$ -		1	\$ 20,000.00
	CEI	1	Ea	\$ 869,301.00	\$ 869,301.00				\$ -		1	\$ 869,301.00
	Overall Project Contingency	1	Ea	\$ 512,569.00	\$ 512,569.00				\$ -		1	\$ 512,569.00
	County Business Participation Model Fee	1	Ea	\$ 76,900.00	\$ 76,900.00				\$ -		1	\$ 76,900.00
	Design, permitting and procurement fees		Ea	\$ -	\$ -	1	Ea	\$ 1,363,401.00	\$ 1,363,401.00		1	\$ 1,363,401.00
	A/E Contract Administration (3% Base Construction)		Ea	\$ -	\$ -	1	Ea	\$ 200,608.00	\$ 200,608.00		1	\$ 200,608.00
	Construction Project Sign		Ea	\$ -	\$ -	1	Ea	\$ 1,500.00	\$ 1,500.00		1	\$ 1,500.00
		SUN Trail Eligible Costs / SUN Trail Funds Requested (not funded through other sources)				Other Funds (must include SUN Trail Ineligible Costs)					Subtotal	\$ 10,840,855.48
Design Cost											\$ -	
CEI Cost											\$ -	
CONTINGENCY		Contingency is not a Participating Item									\$ -	
Total Cost Estimate											\$ -	

A reasonable estimate of project costs is required. Projects must follow appropriate design criteria and meet Americans with Disabilities Act requirements. Projects on the State Highway System, and "on-system" (on FDOT land), and Critical Projects shall utilize FDOT pay items numbers and descriptions. FDOT'S AWARD OF FUNDING TO THE APPLICANT'S PROJECT DOES NOT CONSTITUTE ACCEPTANCE OF PARTICIPATING VS. NON-PARTICIPATING ITEMS IDENTIFIED IN THIS COST ESTIMATE. Funding pay items and eligibility will be discussed during project development. Estimates shall be broken down to eligible and ineligible project costs.

Examples of Non-participating Items:
Benches, trail furniture, bicycle racks or lockers, buildings or enclosures, comfort stations or structures, kiosks, landscaping, litter receptacles, parking areas, trailheads, camping areas, playgrounds, fitness equipment, promotional materials, art, sculptures, monuments, water fountains, splotts, irrigation, contingency, etc. Other elements may be non-participating. See Department of Financial Services (DFS) Catalog of State Financial Assistance (CSFA) 55.038 and FDOT Work Program Instructions.

If you have questions regarding an eligible or non-participating Item, District representatives may be contacted for guidance.
References:
FDOT Design <https://www.fdot.gov/roadway>
FDOT Program Management <https://www.fdot.gov/programmanagement>
FDOT Estimates <https://www.fdot.gov/programmanagement/estimates/estimates>
FDOT SUN Trail Program <https://www.fdot.gov/programmanagement/systemsmanagement/AMH044>
FDOT Work Program https://www.fdot.gov/programmanagement/development/development/development_instructions.htm
DFS CSFA 55.038 <https://apps.fdot.com/fis2/search/catalo?resultsDetail=101714+73953>

Prepared by:

Name:

Reviewed by:

Name:

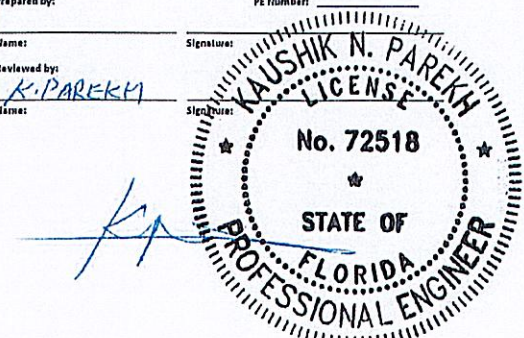
PE Number:

Signature:

Signature:

Date:

Date:



12/8/23

Rankings shift around, but all of the most deadly metros are getting worse

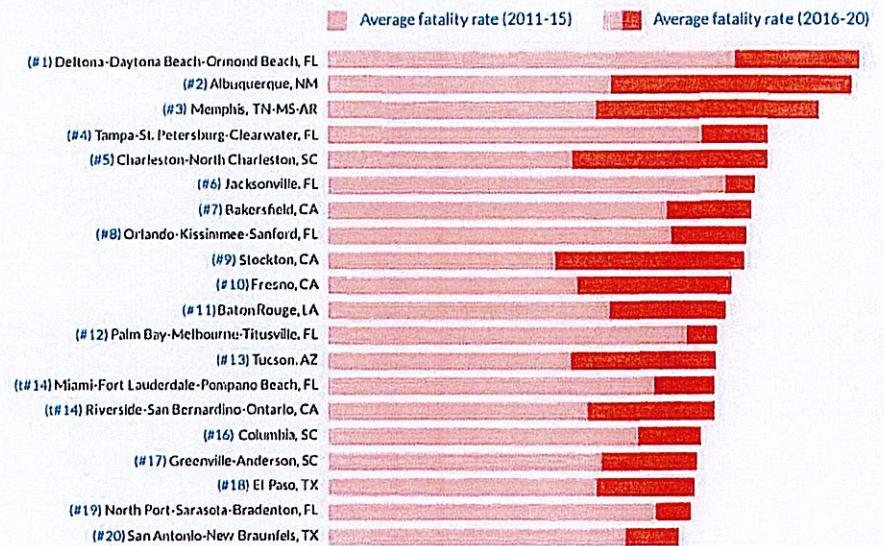
The rankings within each edition of this report shift and metro areas may slide up and down, but every single one of the 20 most deadly metro areas has grown more deadly over the last decade. As the graphic on the previous page shows, a fatality rate that would have topped these rankings five years ago is only good enough for ninth-most deadly this time around.

No top 20 metro area that improved their position in this edition achieved that feat because they reduced their fatality rate. All 20 have grown more deadly. (See the graphic at right.)

The metros that have slid down ("improved") in the rankings have done so not because they have gotten safer, but because other metro areas have grown more deadly at astonishing rates, such as Albuquerque, Memphis, Charleston, Stockton, and Fresno. (See the graphic on the following page.)

No metros in the top 20 are improving

All have gotten significantly more deadly



*Dangerous by Design 2022 rank in parentheses

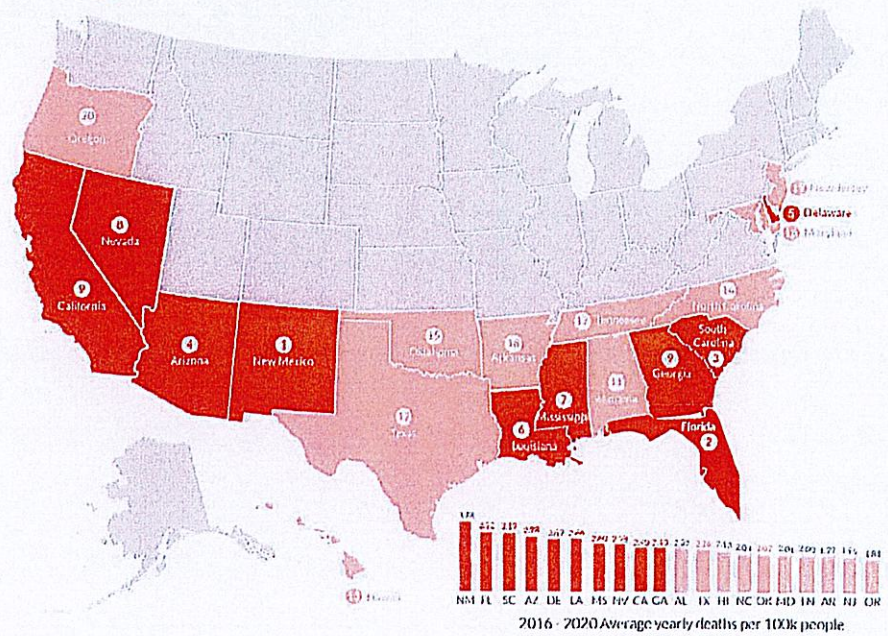
Exhibit 6-7 Dangerous By Design 2022

The top 20 most deadly states for pedestrians (2016-2020)

The graphic at right depicts the top twenty states with the highest number of pedestrian deaths.

States in the southern half of the US are again overrepresented in the top ten most dangerous states, which is not surprising. The bulk of the growth and development in these regions has taken place in an era (post-1960) where low-density sprawling land uses and high-speed, multi-lane arterial highways have been the dominant form, with historic amounts of state and federal transportation funding poured into street designs that are deadly for everyone, especially people walking.

THE TOP 20 Most dangerous states for pedestrians (2016-2020)



2023 FDOT Shared-Use Nonmotorized (SUN) Trail Program
State of Florida Department of Transportation

Biscayne-Everglades Trail-Homestead to Everglades Connection

Letters of Support

December 20, 2023



Exhibit 6-8 Letters of Support



Parks, Recreation and Open Spaces
275 NW 2nd Street
Miami, Florida 33128
T 305-755-7800

December 8, 2023

Aileen Bouclé
Executive Director
Miami-Dade Transportation Planning Organization
150 West Flagler Street, Suite 1900
Miami, FL 33130

*Every Great Community has
a Great Park System.*

2013 Governor's Sustained
Excellence Award



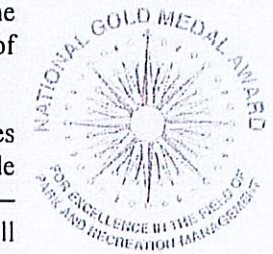
RE: Miami-Dade County Parks, Recreation and Open Spaces Department's Grant Proposal for SUN Trail-Biscayne Project: Biscayne Trail-Homestead to Everglades Connection

Dear Ms. Bouclé:

Miami Dade County Parks, Recreation and Open Spaces (PROS) Department respectfully submits a 2023 proposal to the Florida Department of Transportation SUN Trail Grant Program. The proposed project titled: Biscayne Trail-Homestead to Everglades Connection, will assist the County in carrying out its vision to create an interconnected framework for growth that results in a more livable and sustainable community.



The proposed project will support the construction and CEI of a 4.5-mile segment of the Biscayne Trail, between W. Mowry Dr. at SW 192nd Ave. and the intersection of the C-113 and C-111 Canals, west of Homestead, FL. The proposed route follows W. Mowry Dr. and SW 197th Ave., then parallel the C-113 Canal westward to the C-111 Canal. The design and implementation of this segment will be coordinated with the City of Homestead's segment to the east.



The Biscayne Trail is part of a larger effort to implement the Biscayne-Everglades Greenway (BEG), a 43-mile route in Southern Miami-Dade County that will provide non-motorized trail facilities between the two National Parks the bookend the county—Biscayne and Everglades National Parks. This segment of the Biscayne Trail will complete the east to west corridor of the BEG, providing users with a safe route to access transit, job centers, housing, recreation, and more. The BEG is part of the Open Space Master Plan, Miami-Dade County's 50-year vision for a seamless and sustainable parks and open space system.

Thank you for your consideration of this application. If you have any questions, please do not hesitate to contact me at 305-755-7903.

Sincerely,

Dr. Maria I. Nardi
Director

Miami-Dade Parks, Recreation and Open Spaces Department

"Connecting People and Parks for Life"



Kionne L. McGhee
Miami-Dade County Commissioner

November 28, 2023

Aileen Bouclé
Executive Director
Miami-Dade Transportation Planning Organization
150 West Flagler Street, Suite 1900
Miami, FL 33130

RE: Miami-Dade County Parks, Recreation and Open Spaces Department's Grant Proposal for SUN Trail-Biscayne Project: Biscayne Trail-Homestead to Everglades Connection

Dear Ms. Bouclé:

It is with great pleasure that I submit this letter of my enthusiastic endorsement for Miami-Dade County Parks, Recreation and Open Spaces Department's (MDPROS) proposal to the Florida Department of Transportation SUN Trail Grant Program. All the residents of Miami-Dade County and particularly the residents of District 9, benefit directly from this proposal.

The proposed project will support the construction and CEI of a 4.5-mile segment of the Biscayne Trail, between W. Mowry Dr. at SW 192nd Ave. and the intersection of the C-113 and C-111 Canals, west of Homestead, FL. The proposed route follows W. Mowry Dr. and SW 197th Ave., then parallel the C-113 Canal westward to the C-111 Canal. The design and implementation of this segment will be coordinated with the City of Homestead's segment to the east.

The Biscayne Trail is part of a larger effort to implement the Biscayne-Everglades Greenway (BEG), a 43-mile route in Southern Miami-Dade County that will provide non-motorized trail facilities between the two National Parks the bookend the county—Biscayne and Everglades National Parks. This segment of the Biscayne Trail will complete the east to west corridor of the BEG, providing users with a safe route to access transit, job centers, housing, recreation, and more. The BEG is part of the Open Space Master Plan, Miami-Dade County's 50-year vision for a seamless and sustainable parks and open space system.

Sincerely,

A handwritten signature in black ink, appearing to be "K. McGhee", enclosed in a large, loopy oval scribble.

Kionne L. McGhee
Miami-Dade County Commissioner
District 9



Miami-Dade County Parks, Recreation
and Open Spaces Department
Budget Division
275 NW 2nd Street
Miami, Florida 33128
T 305-755-5462

December 8, 2023

Aileen Bouclé
Executive Director
Miami-Dade Transportation Planning Organization
150 West Flagler Street, Suite 1900
Miami, FL 33130

Subject: Biscayne Trail-Homestead to Everglades Connection-Confirmation of Match

Dear Ms. Bouclé:

In support of the Miami-Dade County Parks, Recreation and Open Spaces Department's (PROS) 2023 SUN Trail-Biscayne Project: Biscayne Trail-Homestead to Everglades Connection, this letter affirms that, should the project be recommended for funding, a committed local match totaling \$2,703,974.10 is allocated to complete the construction phase of the project. The source of the match is Park Impact Fees, as authorized within the Department's Multi-year Capital Plan program titles Local Park Development-Park Benefit District (PBD) No. 2.

If you have any questions on this matter, please feel free to contact me.

Sincerely,

A handwritten signature in blue ink, appearing to read "Angus M. Laney".

Angus M. Laney
Budget Chief
Miami-Dade County Parks,
Recreation & Open Spaces Department



December 7, 2023

Aileen Bouclé
Executive Director
Miami-Dade Transportation Planning Organization
150 West Flagler Street, Suite 1900
Miami, FL 33130

RE: Miami-Dade County Parks, Recreation and Open Spaces Department's Grant Proposal for SUN Trail-Biscayne Project: Biscayne Trail-Homestead to Everglades Connection

Dear Ms. Bouclé:

As Manager of Miami-Dade County's Bike 305 initiative, it gives me great pleasure to support Miami-Dade County Parks, Recreation and Open Spaces Department's (MDPROS) proposal to the Florida Department of Transportation SUN Trail Grant Program. As an avid trail enthusiast, I know all residents of Miami-Dade County will benefit directly from this proposal.

Launched in 2012, the Bike305 initiative supports Miami-Dade's emerging bike culture and promotes cycling to encourage healthy lifestyles. Bike305 uses the county's trail network for community bike rides and host events promoting usage of these off-road cycling venues.

The proposed project will support the construction and CEI of a 4.5-mile segment of the Biscayne Trail, between W. Mowry Dr. at SW 192nd Ave. and the intersection of the C-113 and C-111 Canals, west of Homestead, FL. The proposed route follows W. Mowry Dr. and SW 197th Ave., then parallel the C-113 Canal westward to the C-111 Canal. The design and implementation of this segment will be coordinated with the City of Homestead's segment to the east.

The Biscayne Trail is part of a larger effort to implement the Biscayne-Everglades Greenway (BEG), a 43-mile route in Southern Miami-Dade County that will provide non-motorized trail facilities between the two National Parks the bookend the county—Biscayne and Everglades National Parks. This segment of the Biscayne Trail will complete the east to west corridor of the BEG, providing users with a safe route to access transit, job centers, housing, recreation, and more. The BEG is part of the Open Space Master Plan, Miami-Dade County's 50-year vision for a seamless and sustainable parks and open space system.

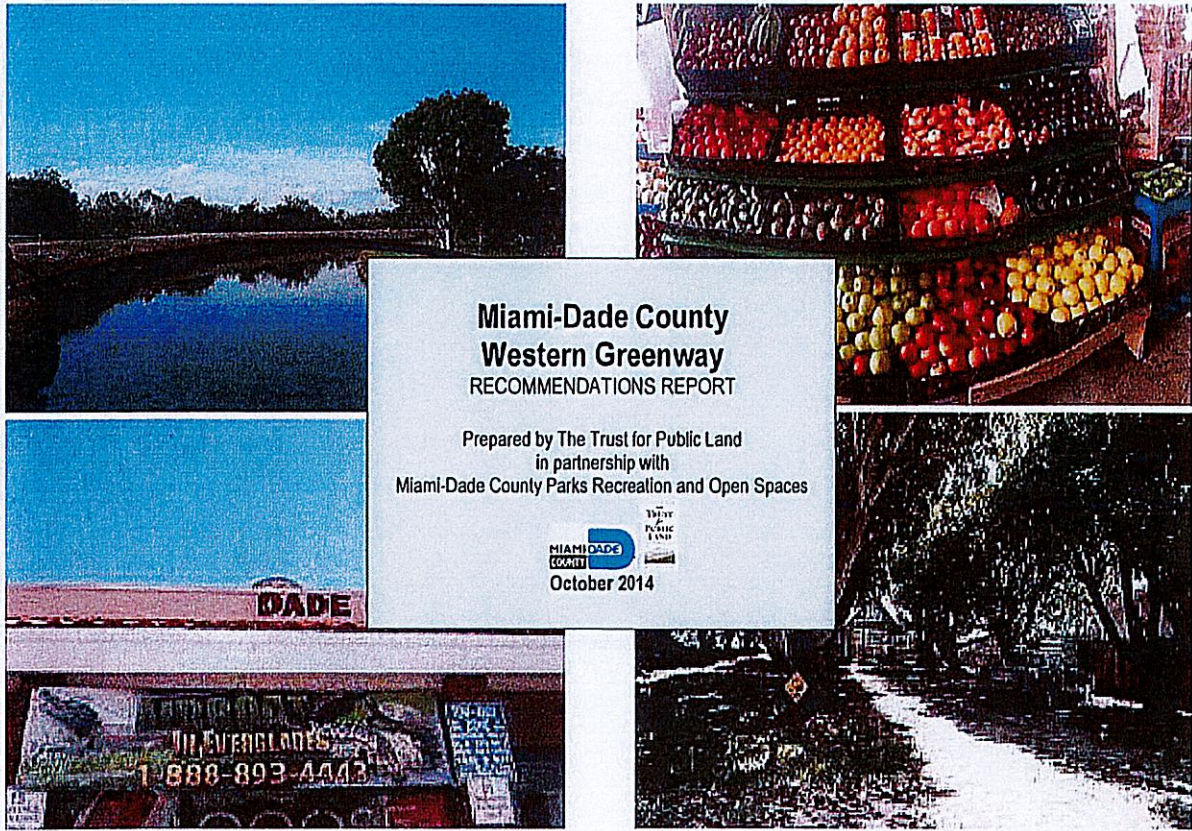
I would enthusiastically furnish any additional information that may be required for this application. You can reach me by email, kawaler@miamidade.gov, or by phone, 305-978-2233.

Thank you for your consideration of this application.

Sincerely,

Sue Kawalerski

Sue Kawalerski, Bike305 Manager
Miami-Dade County Parks, Recreation and Open Spaces Department



**Miami-Dade County
Western Greenway
RECOMMENDATIONS REPORT**

Prepared by The Trust for Public Land
in partnership with
Miami-Dade County Parks Recreation and Open Spaces

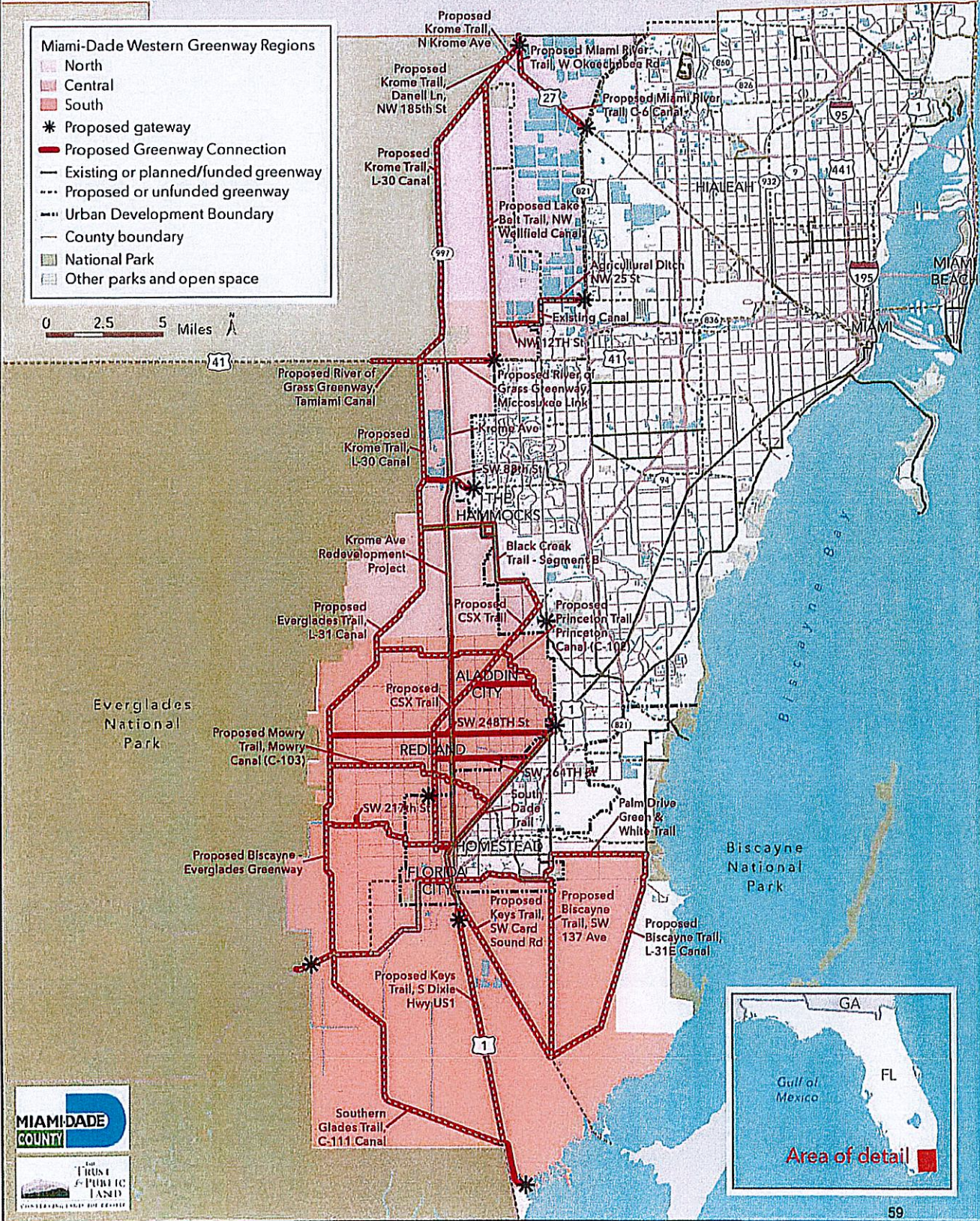


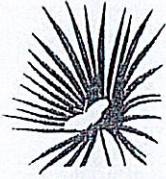
October 2014

Exhibit 6-9 Western Greenway Pages

MIAMI-DADE COUNTY WESTERN GREENWAY SYSTEM STUDY AREA AND PROPOSED ROUTING

- Miami-Dade Western Greenway Regions**
- North
 - Central
 - South
 - * Proposed gateway
 - Proposed Greenway Connection
 - Existing or planned/funded greenway
 - Proposed or unfunded greenway
 - Urban Development Boundary
 - County boundary
 - National Park
 - Other parks and open space





Florida
Natural Areas
Inventory

1018 Thomasville Road
Suite 200-C
Tallahassee, FL 32303
850-224-8207
fax 850-681-9364
www.fnai.org

November 28, 2023

Ryan Benton
Miami-Dade County
Parks, Recreation and Open Spaces Department
275 NW 2nd Street, 4th Floor, Suite 423
Miami, FL 33128

Dear Mr. Benton,

Thank you for requesting information from the Florida Natural Areas Inventory (FNAI). At your request we have produced the following report for your project area.

The purpose of this Standard Data Report is to provide objective scientific information on natural resources located in the vicinity of a site of interest, in order to inform those involved in project planning and evaluation. This Report makes no determination of the suitability of a proposed project for this location, or the potential impacts of the project on natural resources in the area.

Project: Biscayne Trail
Date Received: 11/15/2023
Location: Miami-Dade County

Based on the information available, this site appears to be located in a significant region of natural areas and habitat for several rare species.

Element Occurrences

A search of our maps and database indicates that we currently have many element occurrences mapped in the vicinity of the study area (see enclosed map and element occurrence table). Please be advised that a lack of element occurrences in the FNAI database is not a sufficient indication of the absence of rare or endangered species on a site.

Federally Listed Species

Our data indicate federally listed species are present on or very near this site, specifically Blodgett's silverbush (*Argythamnia blodgettii*), Florida brickell-bush (*Brickellia mosieri*), Small's milkpea (*Galactia smallii*), Florida Panther (*Puma concolor coryi*), pinelands spurge (*Euphorbia deltoidea ssp. pinetorum*) and Everglades bully (*Sideroxylon reclinatum ssp. austrofloridense*) (see enclosed map and tables for details). This statement should not be interpreted as a legal determination of presence or absence of federally listed species on a property.

The element occurrences data layer includes occurrences of rare species and natural communities. The map legend indicates that some element occurrences occur in the general vicinity of the label point. This may be due to lack of precision of the source data, or an element that occurs over an extended area (such as a wide ranging species or large natural community). For animals and plants, element occurrences generally refer to more than a casual sighting; they usually indicate a viable population of the species. Note that some element occurrences represent historically documented observations which may no longer be extant. Extirpated element occurrences will be marked with an 'X' following the occurrence label on the enclosed map.



Florida Resources
and Environmental
Analysis Center

Institute of Science
and Public Affairs

The Florida State University

Tracking Florida's Biodiversity

Exhibit 6-10 FNAI Report

MDC033

*Several of the species and natural communities tracked by the Inventory are considered **data sensitive**. Occurrence records for these elements contain information that we consider sensitive due to collection pressures, extreme rarity, or at the request of the source of the information. The Element Occurrence Record has been labeled "Data Sensitive." We request that you not publish or release specific locational data about these species or communities without consent from the Inventory. If you have any questions concerning this please do not hesitate to call.*

Likely and Potential Rare Species

In addition to documented occurrences, other rare species and natural communities may be identified on or near the site based on habitat models and species range models (see enclosed Biodiversity Matrix Report). These species should be taken into consideration in field surveys, land management, and impact avoidance and mitigation.

FNAI habitat models indicate areas, which based on land cover type, offer suitable habitat for one or more rare species that is known to occur in the vicinity. Habitat models have been developed for approximately 300 of the rarest species tracked by the Inventory, including all federally listed species.

FNAI species range models indicate areas that are within the known or predicted range of a species, based on climate variables, soils, vegetation, and/or slope. Species range models have been developed for approximately 340 species, including all federally listed species.

The FNAI Biodiversity Matrix Geodatabase compiles Documented, Likely, and Potential species and natural communities for each square mile Matrix Unit statewide.

CLIP

The enclosed map shows natural resource conservation priorities based on the Critical Lands and Waters Identification Project. CLIP is based on many of the same natural resource data developed for the Florida Forever Conservation Needs Assessment, but provides an overall picture of conservation priorities across different resource categories, including biodiversity, landscapes, surface waters, and aggregated CLIP priorities (that combine the individual resource categories). CLIP is also based primarily on remote sensed data and is not intended to be the definitive authority on natural resources on a site.

For more information on CLIP, visit <https://www.fnai.org/services/clip>.

Managed Areas

Portions of the site appear to be located adjacent to the Frog Pond/L-31 N Transition Lands, managed by the Frog Pond/L-31 N Transition Lands.

The Managed Areas data layer shows public and privately managed conservation lands throughout the state. Federal, state, local, and privately managed conservation lands are included.

The Inventory always recommends that professionals familiar with Florida's flora and fauna conduct a site-specific survey to determine the current presence or absence of rare, threatened, or endangered species.

Please visit www.fnai.org/species-communities/tracking-main for county or statewide element occurrence distributions and links to more element information.

The database maintained by the Florida Natural Areas Inventory is the single most comprehensive source of information available on the locations of rare species and other significant ecological resources. However, the data are not always based on comprehensive or site-specific field surveys. Therefore this information should not be regarded as a final statement on the biological resources of the site being considered, nor should it be substituted for on-site surveys. Inventory data are designed for the purposes of conservation planning and scientific research, and are not intended for use as the primary criteria for regulatory decisions.

Tracking Florida's Biodiversity

Information provided by this database may not be published without prior written notification to the Florida Natural Areas Inventory, and the Inventory must be credited as an information source in these publications. The maps contain sensitive environmental information, please do not distribute or publish without prior consent from FNAI. FNAI data may not be resold for profit.

Thank you for your use of FNAI services. If I can be of further assistance, please contact me at (850) 224-8207 or at kbrinegar@fnai.fsu.edu.

Sincerely,

Kerri Brinegar

Kerri Brinegar
GIS / Data Services

Encl

Tracking Florida's Biodiversity



1018 Thomasville Road
 Suite 200-C
 Tallahassee, FL 32303
 (904) 224-8267
 www.fnai.org

**Florida
 Natural Areas
 Inventory**

Element Occurrences

- Animals
- Plants
- Communities
- Other
- Data Sensitive

Point Indicates General Vicinity of Element

Conservation Lands

- Federal
- State
- Local
- Private
- State Aquatic Preserves

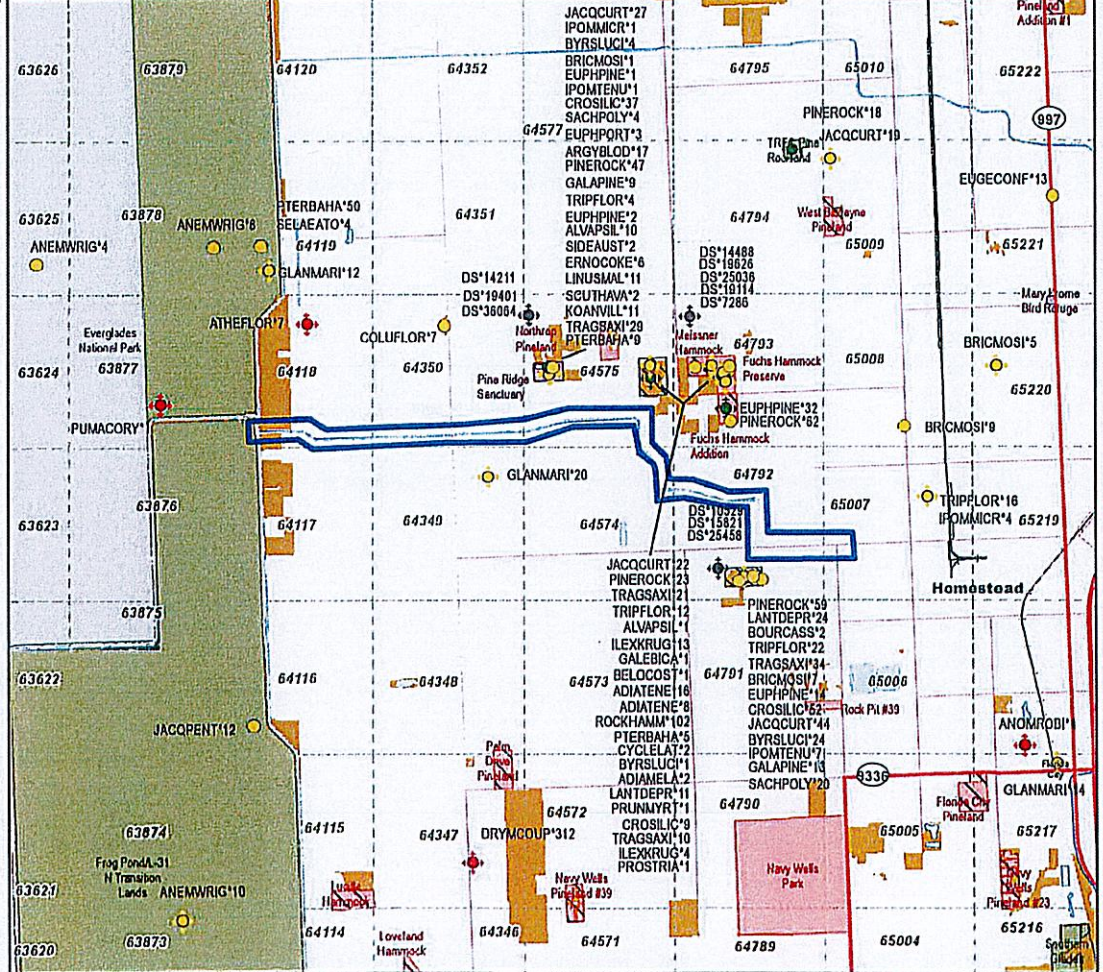
Land Acquisition Projects

- Florida Forever Board of Trustees Projects
- FNAI Rare Species Habitat
- FNAI Biodiversity Matrix Square Mile Units

- County Boundary
- Roads
- Water



Biscayne Trail Miami-Dade County



NOTE
 This map contains environmentally sensitive information. Please do not distribute or publish without prior consent from FNAI. Map should not be interpreted without accompanying documents.

Map produced by KAB 11/28/2023



1018 Thomasville Road
 Suite 200-C
 Tallahassee, FL 32303
 (904) 224-8207
 www.fnai.org

**Florida
 Natural Areas
 Inventory**

CLIP v4.0 Resource Priorities

Biodiversity Resource Category

- Priority 1 - highest
- Priority 2
- Priority 3
- Priority 4
- Priority 5

Landscape Resource Category

- Priority 1 - highest
- Priority 2
- Priority 3
- Priority 4
- Priority 5

Surface Water Resource Category

- Priority 1 - highest
- Priority 2
- Priority 3
- Priority 4
- Priority 5

Aggregated CLIP Priorities

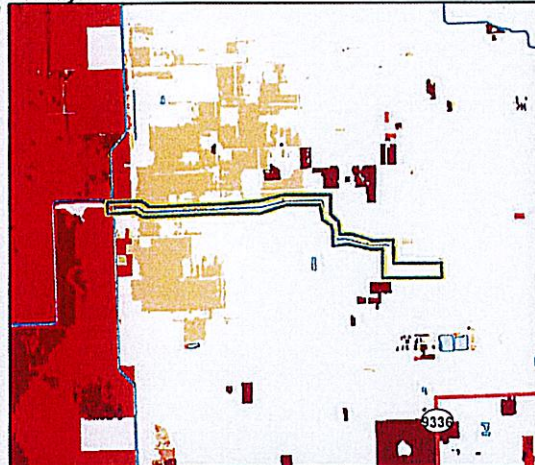
- Priority 1 - highest
- Priority 2
- Priority 3
- Priority 4
- Priority 5

Site Boundary

Map should not be interpreted without accompanying documents.

Critical Lands and Waters Identification Project (CLIP) is a cooperative effort between the FSU Florida Natural Areas Inventory, UF Center for Landscape Conservation Planning, and FL Fish & Wildlife Conservation Commission, with additional funding from FL Dept of Environmental Protection and US Fish & Wildlife Service.

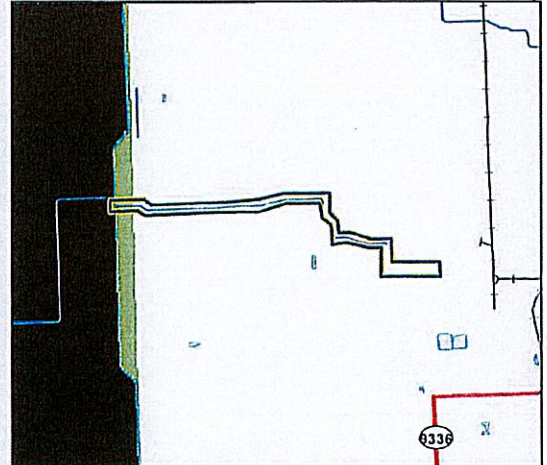
Biscayne Trail



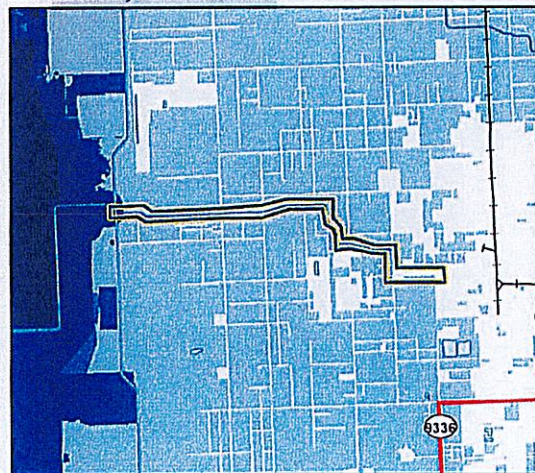
CLIP Biodiversity Resource Priorities

Site boundaries are approximate.

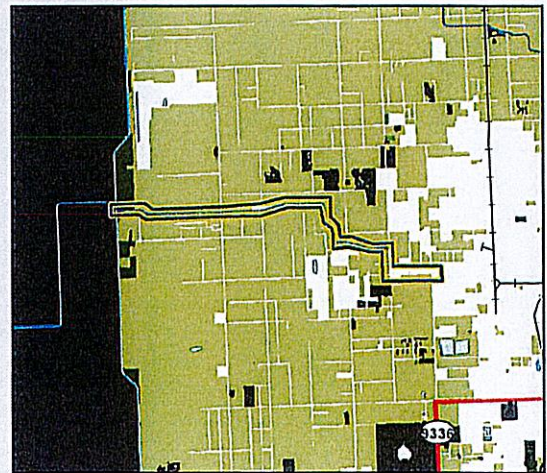
Miami-Dade County



CLIP Landscape Resource Priorities



CLIP Surface Water Resource Priorities




CLIP Aggregated Resource Priorities



Map produced by K&B
 11/28/2023



EXHIBIT: TRAIL CONNECTIVITY

Project Location 


Other Funded and Existing Trail Projects 



Exhibit 6-11 Trail Connectivity



MEMORANDUM
(Revised)

TO: Honorable Chairman Anthony Rodriguez
and Members, Board of County Commissioners

DATE: April 21, 2026

FROM: 
Geni Bonzon-Keenan
County Attorney

SUBJECT: Agenda Item No. 3(B)(6)

Please note any items checked.

- “3-Day Rule” for committees applicable if raised**
- 6 weeks required between first reading and public hearing**
- 4 weeks notification to municipal officials required prior to public hearing**
- Decreases revenues or increases expenditures without balancing budget**
- Budget required**
- Statement of fiscal impact required**
- Statement of social equity required**
- Ordinance creating a new board requires detailed County Mayor’s report for public hearing**
- No committee review**
- Requires more than a majority vote (i.e., 2/3’s present ____, 2/3 membership ____, 3/5’s ____, unanimous ____, majority plus one ____, CDMP 7 votes (majority of membership) ____, CDMP 2/3 members present but not less than 7 votes (majority of membership) ____, CDMP 9 votes (2/3 membership) _____) to approve**
- Current information regarding funding source, index code and available balance, and available capacity (if debt is contemplated) required**

Approved _____ Mayor
Veto _____
Override _____

Agenda Item No. 3(B)(6)
4-21-26

RESOLUTION NO. _____

RESOLUTION RETROACTIVELY APPROVING THE SUBMITTAL OF A GRANT APPLICATION TO THE FLORIDA DEPARTMENT OF TRANSPORTATION SHARED-USE NONMOTORIZED (SUN) TRAIL PROGRAM FOR \$8,742,899.00 SUPPORTING CONSTRUCTION ENGINEERING AND INSPECTION OF A 4.5-MILE SEGMENT OF THE BISCAYNE TRAIL, BETWEEN W. MOWRY DR. AT SW 192ND AVE. AND THE INTERSECTION OF THE C-113 AND C-111 CANALS, WEST OF HOMESTEAD, FL. THE PROPOSED ROUTE FOLLOWS W. MOWRY DR. AND SW 197TH AVE., THEN PARALLEL THE C-113 CANAL WESTWARD TO THE C-111 CANAL; AND FURTHER AUTHORIZING THE COUNTY MAYOR OR COUNTY MAYOR'S DESIGNEE TO ACCEPT AND EXPEND FUNDS AND EXECUTE CONTRACTS, AMENDMENTS, AND OTHER DOCUMENTS AS REQUIRED BY THE AGREEMENT

WHEREAS, this Board desires to accomplish the purposes outlined in the accompanying memorandum, a copy of which is incorporated herein by reference,

NOW, THEREFORE, BE IT RESOLVED BY THE BOARD OF COUNTY COMMISSIONERS OF MIAMI-DADE COUNTY, FLORIDA, that this Board hereby retroactively approves the County Mayor's or County Mayor's Designee's submittal of a grant application, in substantially the form attached as Exhibit A to the Mayor's Memorandum, and further authorizing the County Mayor or Mayor's designee to accept and expend funds and execute contracts, amendments, and other documents as required by the agreement, as long as such amendments do not have an additional fiscal impact on the County, upon review and final approval of the County Attorney's Office for legal sufficiency.

The foregoing resolution was offered by Commissioner ,
who moved its adoption. The motion was seconded by Commissioner
and upon being put to a vote, the vote was as follows:

Anthony Rodriguez, Chairman	
Kionne L. McGhee, Vice-Chairman	
Marleine Bastien	Juan Carlos Bermudez
Sen. René García	Oliver G. Gilbert, III
Roberto J. Gonzalez	Keon Hardemon
Danielle Cohen Higgins	Vicki L. Lopez
Natalie Milian Orbis	Raquel A. Regalado
Micky Steinberg	

The Chairperson thereupon declared the resolution duly passed and adopted this 21st day of April, 2026. This resolution shall become effective upon the earlier of (1) 10 days after the date of its adoption unless vetoed by the County Mayor, and if vetoed, shall become effective only upon an override by this Board, or (2) approval by the County Mayor of this Resolution and the filing of this approval with the Clerk of the Board.

MIAMI-DADE COUNTY, FLORIDA
BY ITS BOARD OF
COUNTY COMMISSIONERS

JUAN FERNANDEZ-BARQUIN, CLERK

By: _____
Deputy Clerk

Approved by County Attorney as
to form and legal sufficiency.

Melanie J. Spencer