



GreenPrint Update

Office of Resilience

Regulatory and Economic Resources Department (RER)

December 2015





GREENPRINT: THE COUNTY'S FIRST SUSTAINABILITY PLAN



- Community-wide action plan with 5 year cycles
- Takes advantage of synergies from existing County plans
- Includes County's 1st Climate Action Plan
- Estimated Reductions: ~1.5 million metric tons of GHG emissions
- Estimated Savings: \$73,000,000 per year if fully implemented.

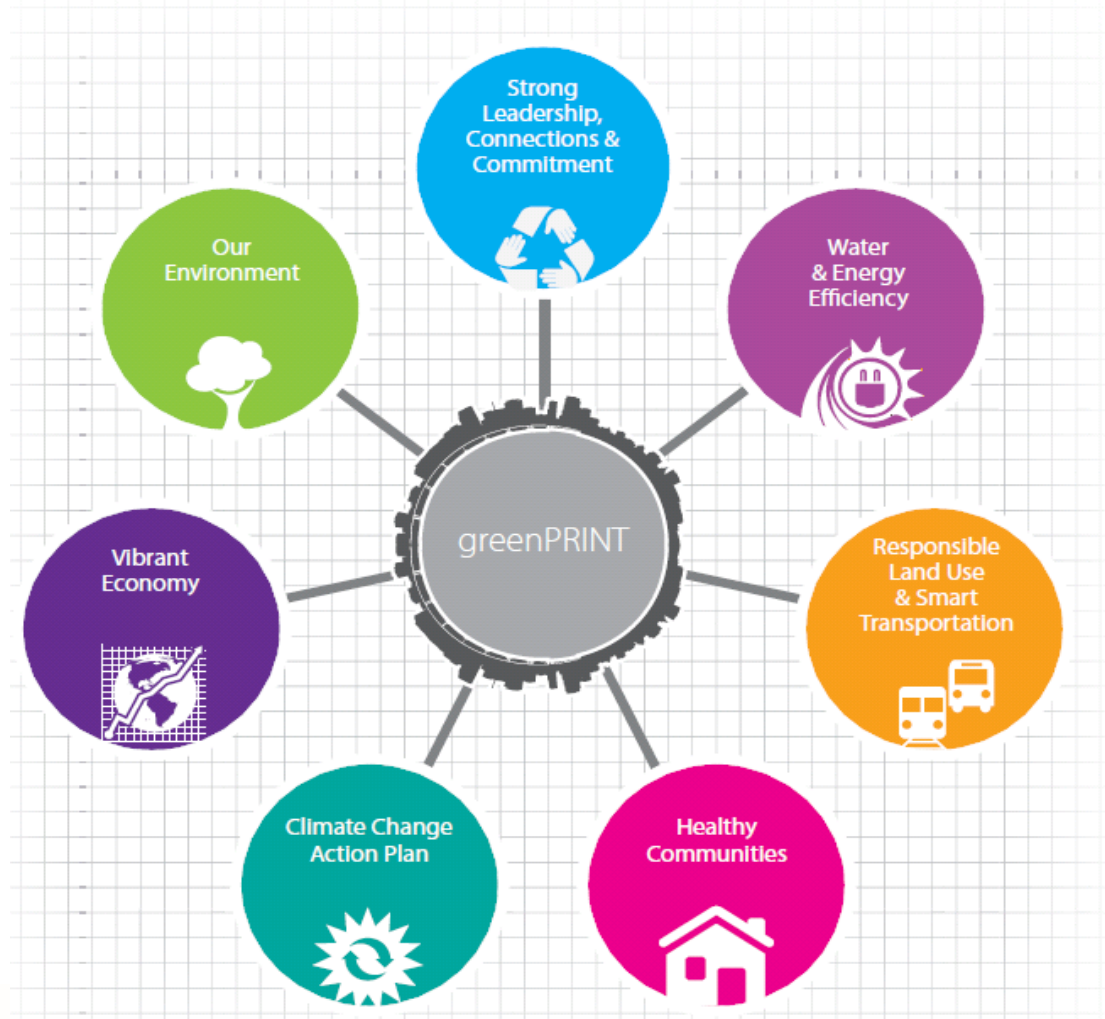


■ Aspirational Goals (13)

- Within 7 goal areas

■ Initiatives (137)

- Assigned lead agency (partners are important to implementation)
- Specific measures and targets to track progress with goals



Goal Area Example:

Responsible Land Use and Smart Transportation



Responsible Land
Use & Smart
Transportation

- Use our land wisely, creating and connecting strong sustainable neighborhoods

Develop 15 urban center area plans and six multi-modal corridor master plans. Create four transit-oriented developments (TODs) on heavy rail and bus corridors. Develop level of service metrics to identify resident accessibility to parks and open space areas. Improve access through an interconnected network of shaded and safe bikeways and trails connected to neighborhoods, schools, employment centers, civic buildings, and other community destinations

- Provide more transportation options, reducing the time we spend in our cars

Add 10 million boardings to our public transportation system through increased services, and enhancing convenience, comfort, and timely service. Increase the percentage of total trips taken by walking or bicycling from 10 percent to 16 percent of all travel trips. Increase resident satisfaction with the availability of sidewalks for pedestrians to 65 percent or more and add 40 miles of bicycle trails and lanes.

With specific measures and targets



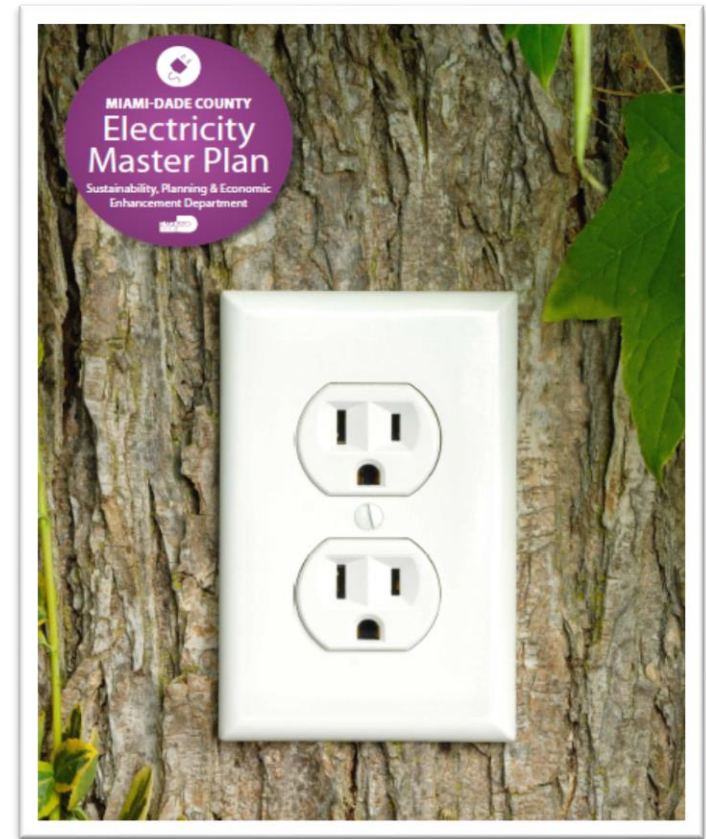
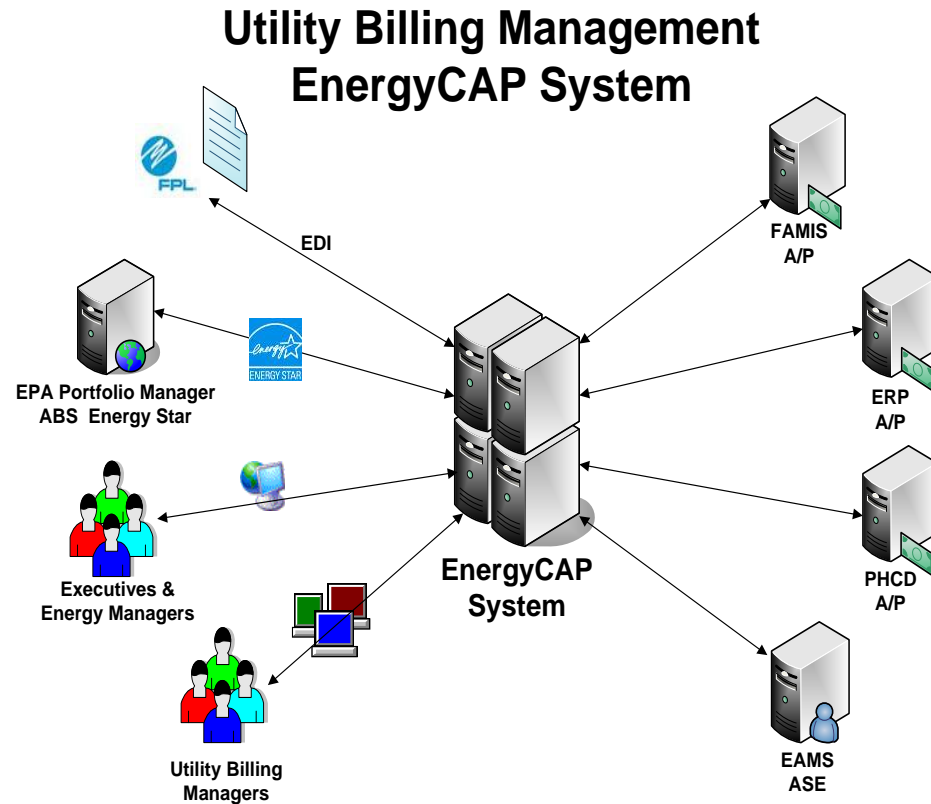
Responsible Land Use and Smart Transportation

- Use our land wisely, creating and connecting strong sustainable neighborhoods

Performance Measures	2015 Target
Urban center area plans	15
Multi-corridor master plans	6
Transit-oriented developments	4
Enhanced bus corridors	4
Park and ride lots	6
Park and open spaces accessibility metrics	Develop

Initiative Example:

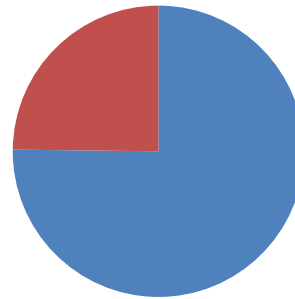
GP Initiative # 21 – Develop/Implement a government energy efficiency plan



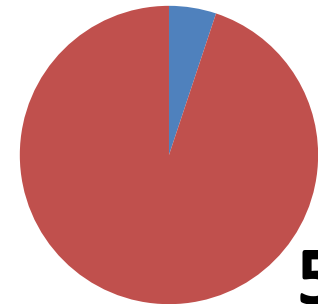
- *County government's electric energy footprint represents about 10% of the total electricity consumed community-wide.*
- *County government's electric energy use costs over \$100 million annually.*
- *Metric: 20% electricity reduction goal from 2007 levels by 2014 for County facilities.*



GreenPrint Progress Report 001

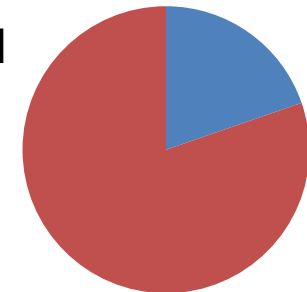


99 Initiatives in progress and permanently ongoing



5%

11 Initiatives completed



20%

27 future Initiatives



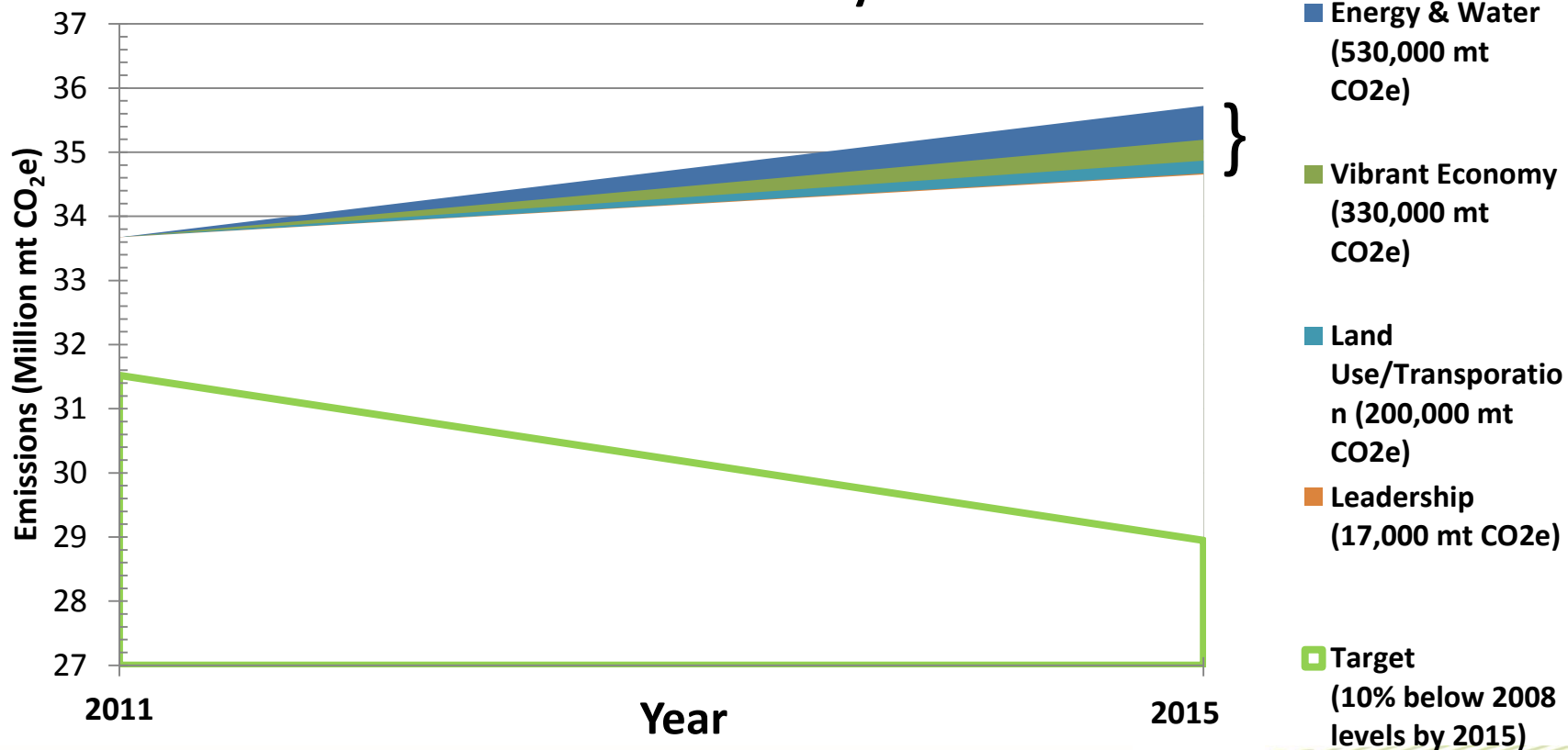
GP Cycle 1 Metric Examples

- Greenhouse Gas (GHG) Emissions Inventories (Government Ops and Community) and Reduction Estimates
- Non-renewable energy consumption
- Renewable energy generation
- Per capita potable water consumption
- Acres of Environmentally Endangered Lands



Example High Level Metric

Emissions Reductions by Goal Area



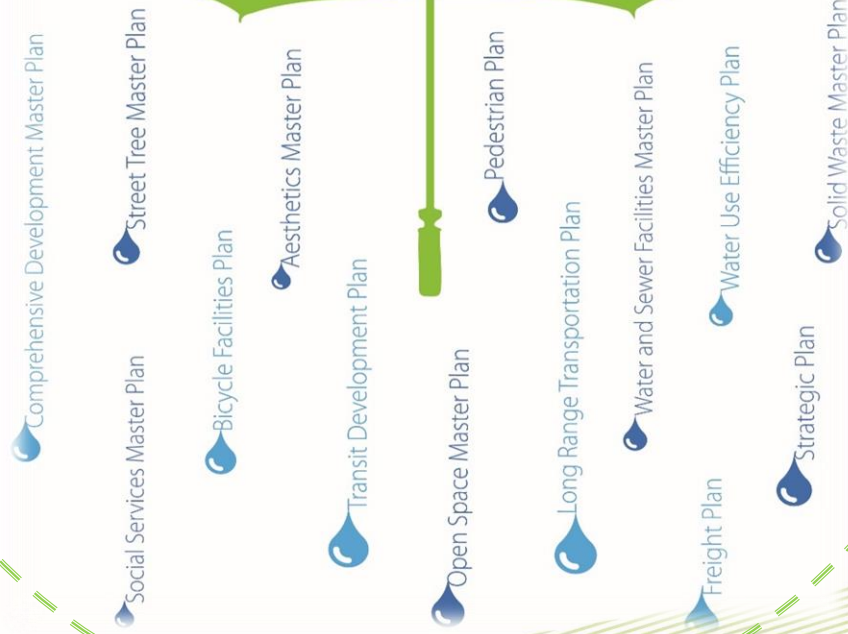


Next Steps Focus

- Initiative Analysis for next cycle 2016-2021
- IT Tracking Tool Updates
- GHG Emissions Inventories and Reduction Estimates
- Next 5-year Cycle – Plan Writing
 - Community meetings (R-424-15)
 - Integration of SLR Reports (R-44-15 – R-49-15)
- Adaptation Action Area Pilot (R-44-15)
- Resilience Strategy

Sea Level Rise
Task Force Reports

GreenPrint Cycle 2 → Resilience Strategy



Budget Priorities

One Community One Goal