

TRANSIT ORIENTED DEVELOPMENT PROJECTS

TOD Vision & Goals

Create Attractive & Dynamic Station Areas

- Design and functionality
- Oriented towards pedestrians
- Includes a mix of uses
- Promote density



TOD Vision & Goals

Increase Transit Ridership

- Housing, employment and shopping
- Improve efficiency of transit assets
- Reduces reliability of single-occupancy vehicles



Miami-Dade Transit



COUNTY



TOD Vision & Goals

Generate Revenue

- Ground Leases
- License Agreements
- Concession Stands
- Advertisement at Stations



Dadeland South and Dadeland North Station Areas – June 1982

SMITH AERIAL SURVEYS & ASSOC.
Building C Suite 1 1301 W. Copens Road
Pompano Beach, Florida 33064
For Reprints Call:
Dade - 845-3341 Broward - 972-3020
Palm Beach - 734-0060 West - 800-432-4512
Print# 143093 Date 6-21-82
Copyright Reserved

DADELAND MALL

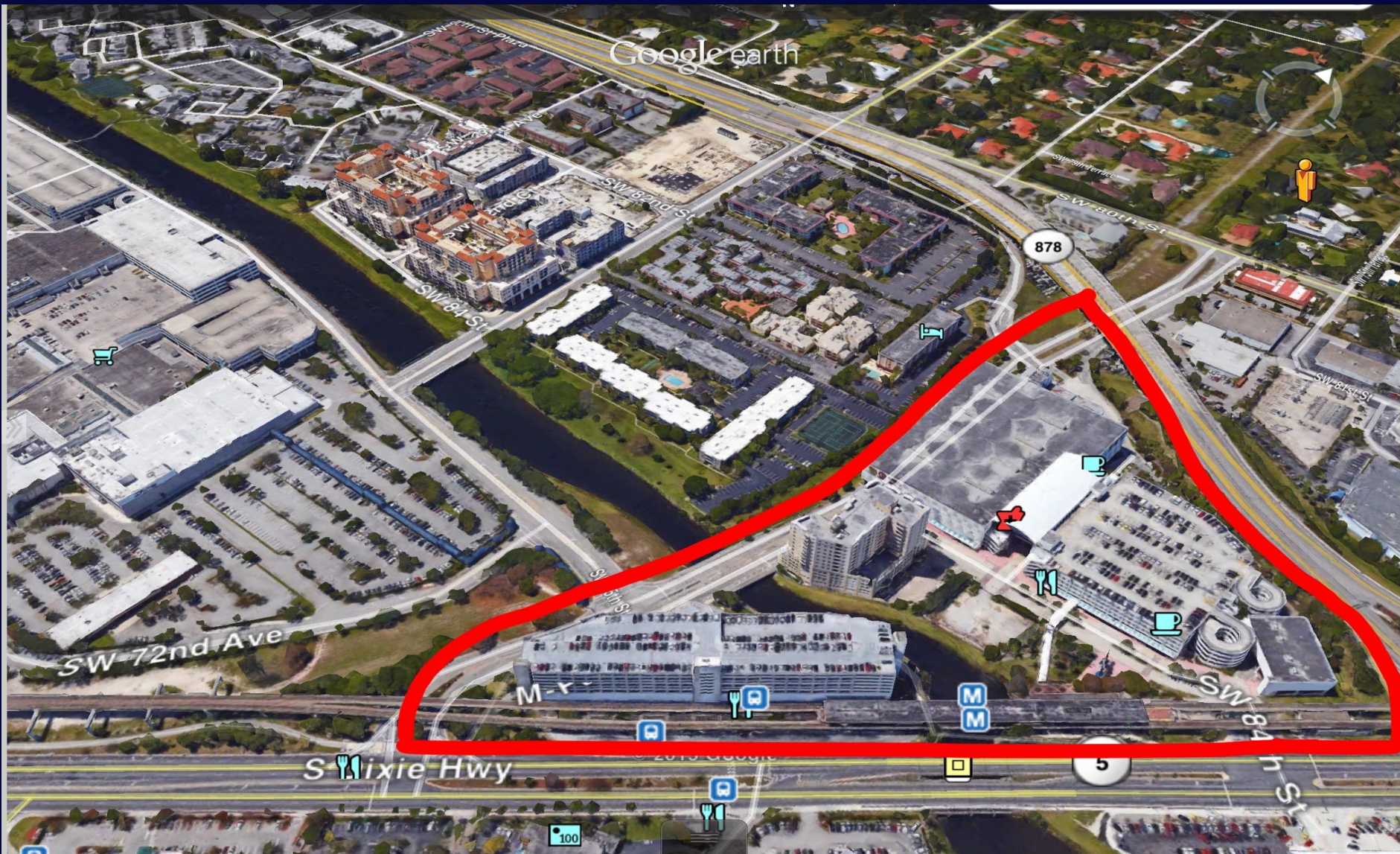
DADELAND
METRORAIL
STATION NORTH

DADELAND
METRORAIL
STATION SOUTH

Dadeland South Station Area - 2015



Dadeland North Station Area - 2015



Affordable Housing on MDT Property



Allapattah



Brownsville



Northside



Santa Clara

NW 7th Avenue Transit Village

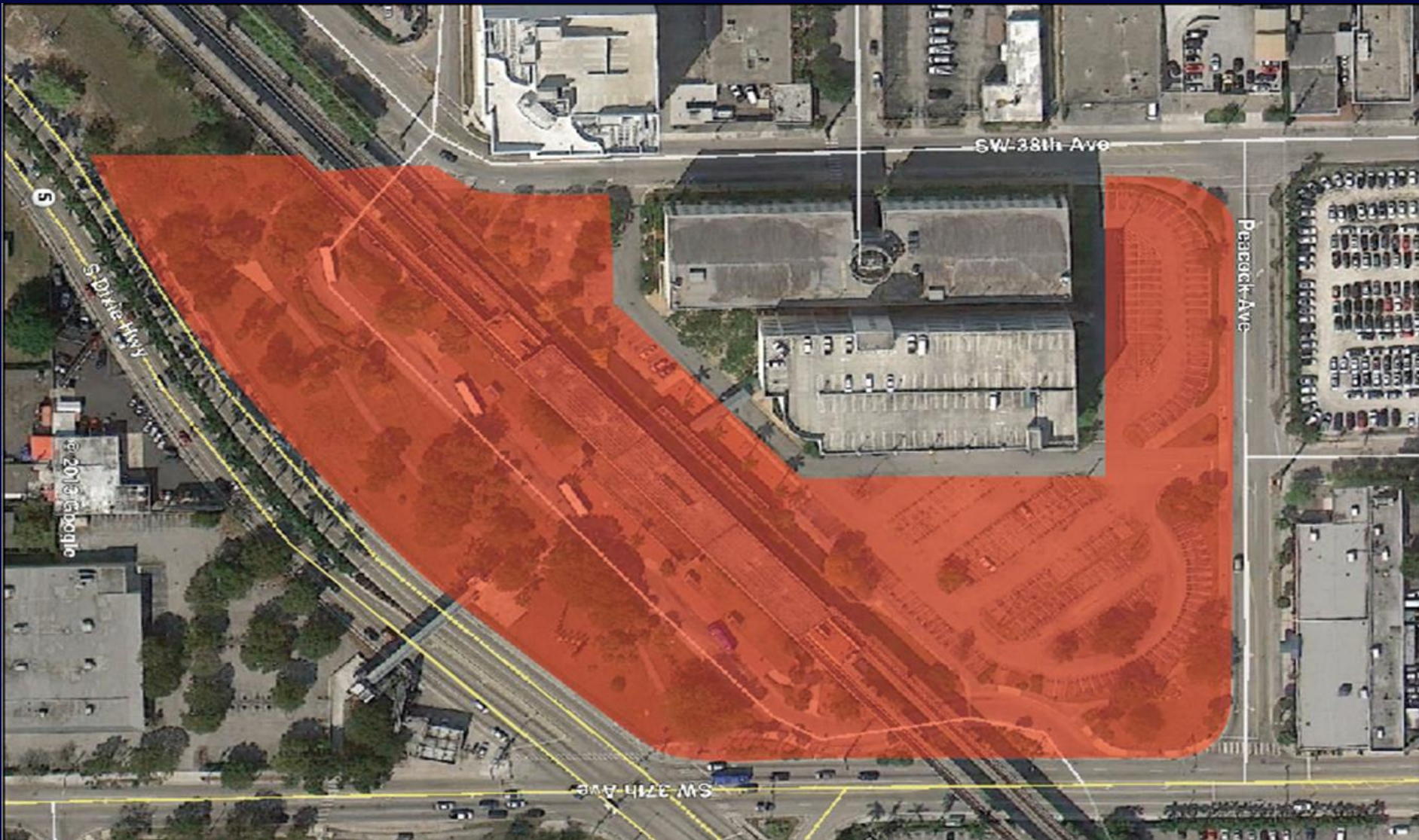


Existing Transit Oriented Development Totals

- *2,350,842 sq. ft. of Office Space*
- *434,791 sq. ft. of Retail Space*
- *1,209 dwelling units (168 market rate and 1,041 affordable housing)*
- *5,031 parking spaces (garage and surface)*
- *305 hotel rooms*
- **Annual Revenue approximately \$3-\$4million**

Upcoming Opportunities

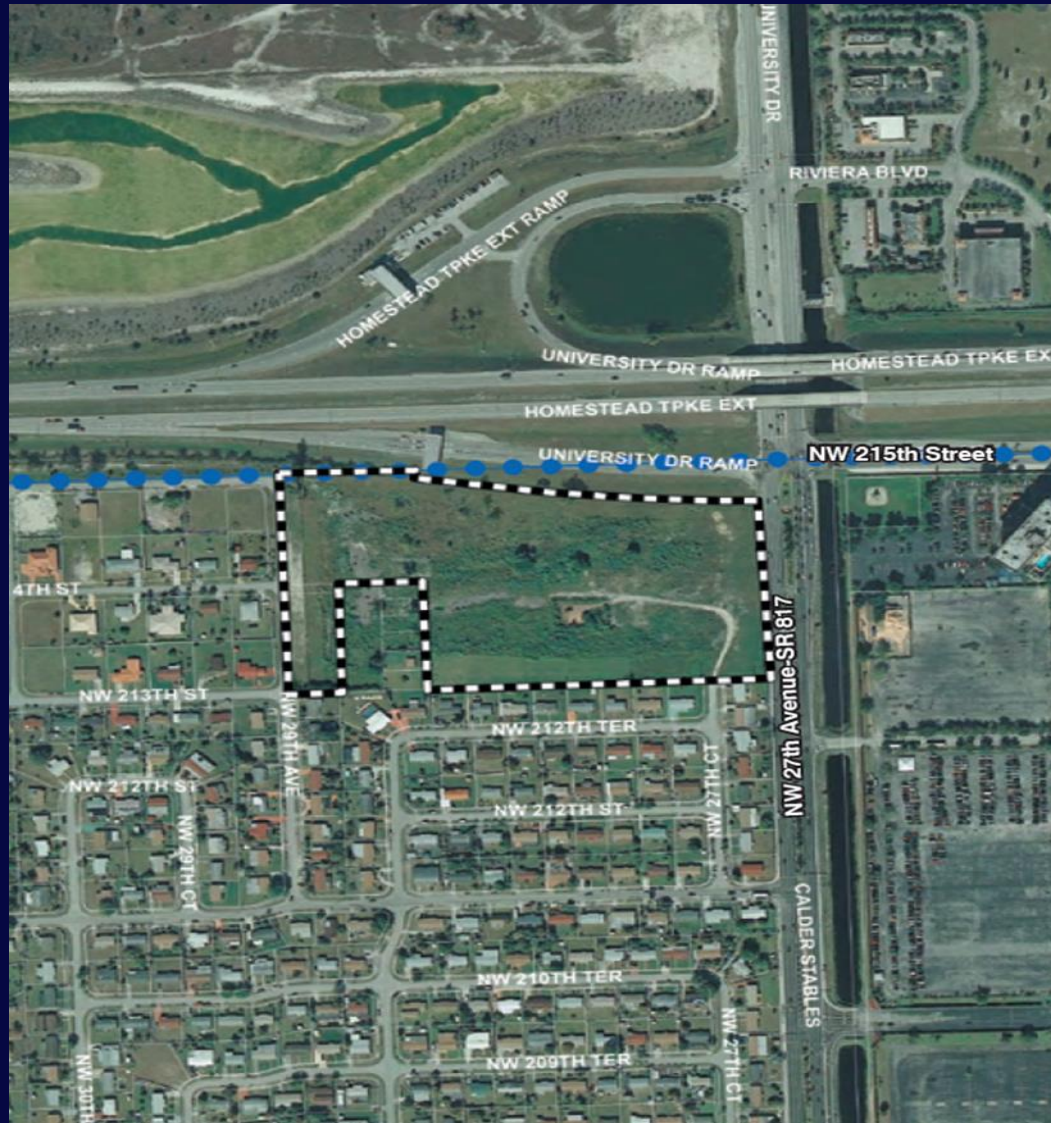
TOD: Douglas Road Metrorail Station



TOD: Douglas Road Metrorail Station



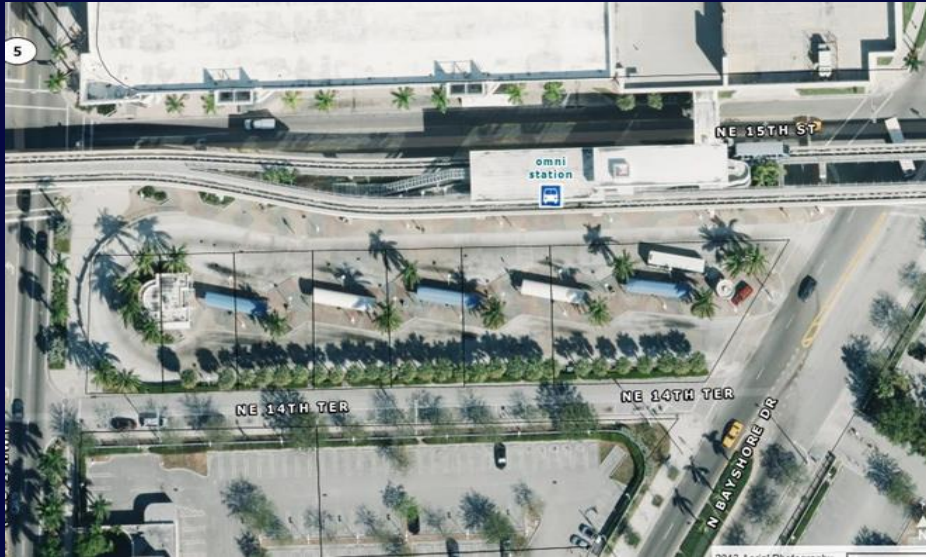
Parcel at NW 215th St. and 27th Ave.



Miami Intermodal Center (MIC)



Omni Downtown Bus Terminal



- **Coconut Grove Metrorail Station**
- **South Miami Metrorail Station**
- **Caribbean Blvd. TOD**
- **SW 296 Street TOD**
- **Senator Villas TOD**

THANK YOU