

Moving to a New Normal Dashboard

July 05, 2020




Daily Summary


Daily Notes:

Admissions as of 6/26 include facilities that had not been previously reporting. Today's admissions include all facilities.

1 Downward trajectory of documented cases within a 14-day period


As of **07/05/2020**
New Positives: **2,282**
Trend: 


2 14 consecutive days where positive test rate is below 10% on average*

As of **07/05/2020**
Average of the Last 14 Days  **22.10%**

3 30% Total and ICU Bed Capacity Available**

As of **07/05/2020**

COVID non-ICU Admissions	1,207	
non-ICU Bed Capacity	2,882	 41.88%

COVID ICU Admissions	331	
ICU Bed Capacity	434	 76.27%

4 Schedule viral testing of healthcare workers including in nursing homes

In Progress

5 Plan in place to monitor and manage hospital capacity and vulnerable populations

In Progress

6 Countywide contact tracing program with a target headcount of 100 tracers by May 31

Complete

FDOH has more than 175 contact tracers in place

7 Sector safety guidelines developed and communicated

In Progress

Yellow Phase guidelines have been communicated and are being monitored

8 Plan in place to open public transit that protects workers and commuters

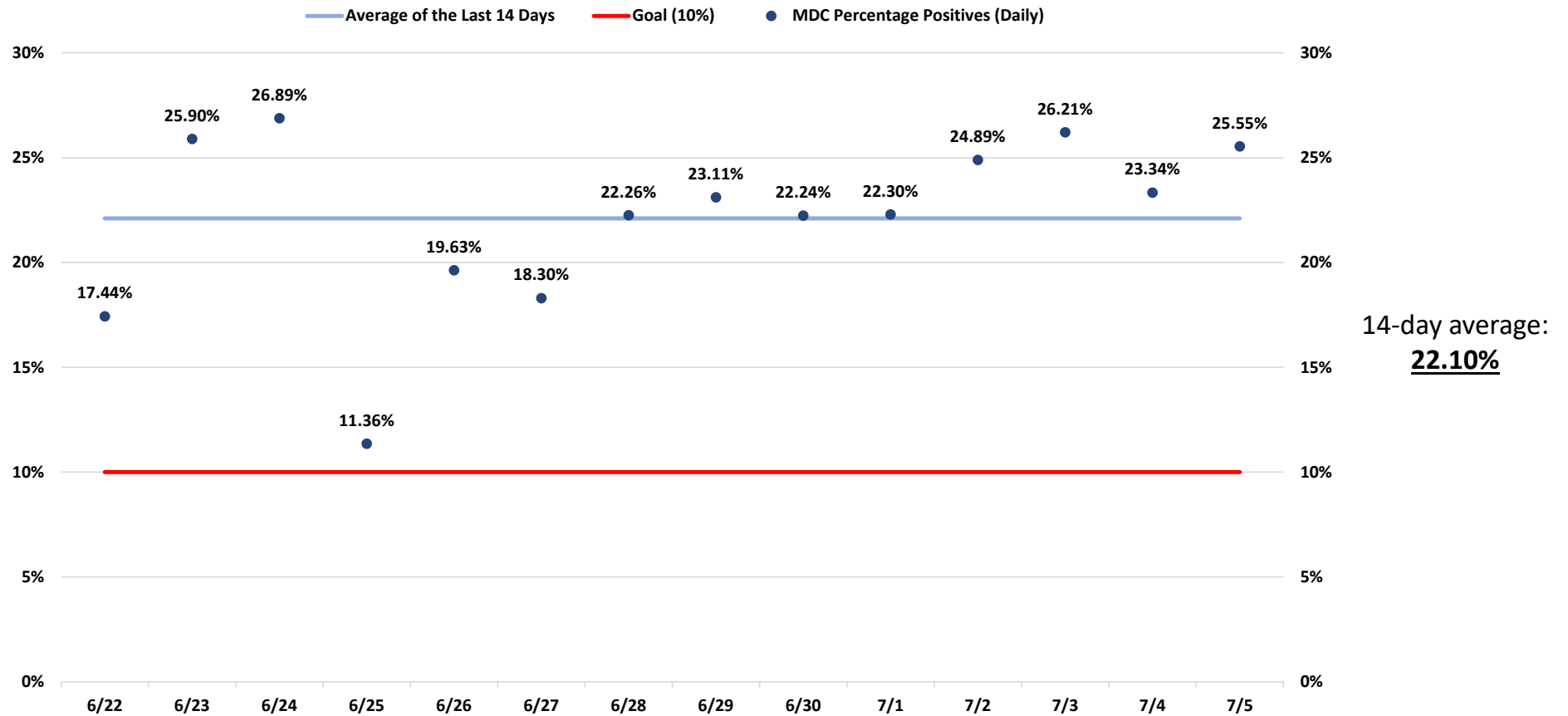
In Progress

Guidelines have been communicated and are being monitored

* Reflects the positive rate for the test results reported today

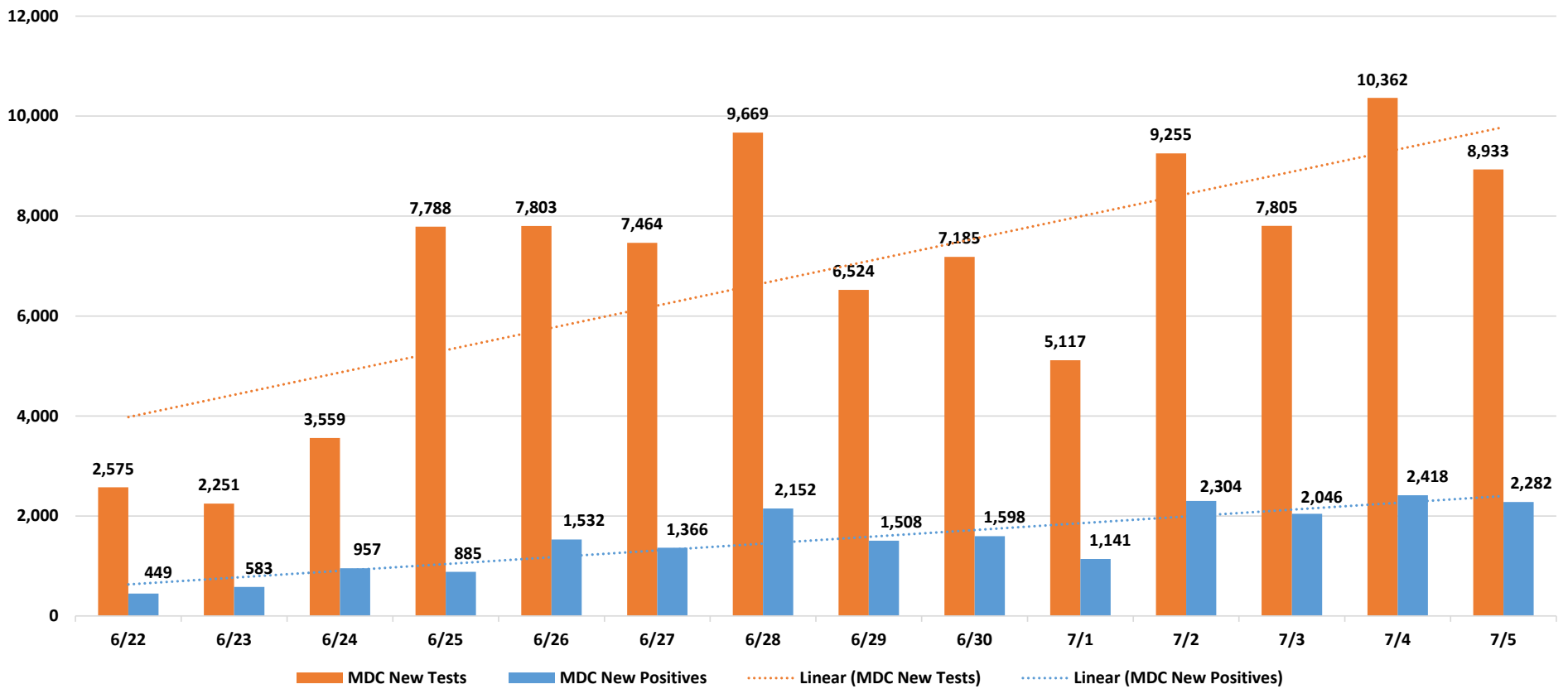
** Percentage represents the number of COVID positive patients utilizing hospital beds; does not include the 1,868 acute care and ICU beds that may be converted

Daily Positive Cases out of Total Tests



Source: Daily reports published by the Florida Division of Emergency Management

New Positive Cases



Source: Daily reports published by the Florida Division of Emergency Management

Florida Influenza Surveillance Reports Influenza-like Illness (ILI) Cases

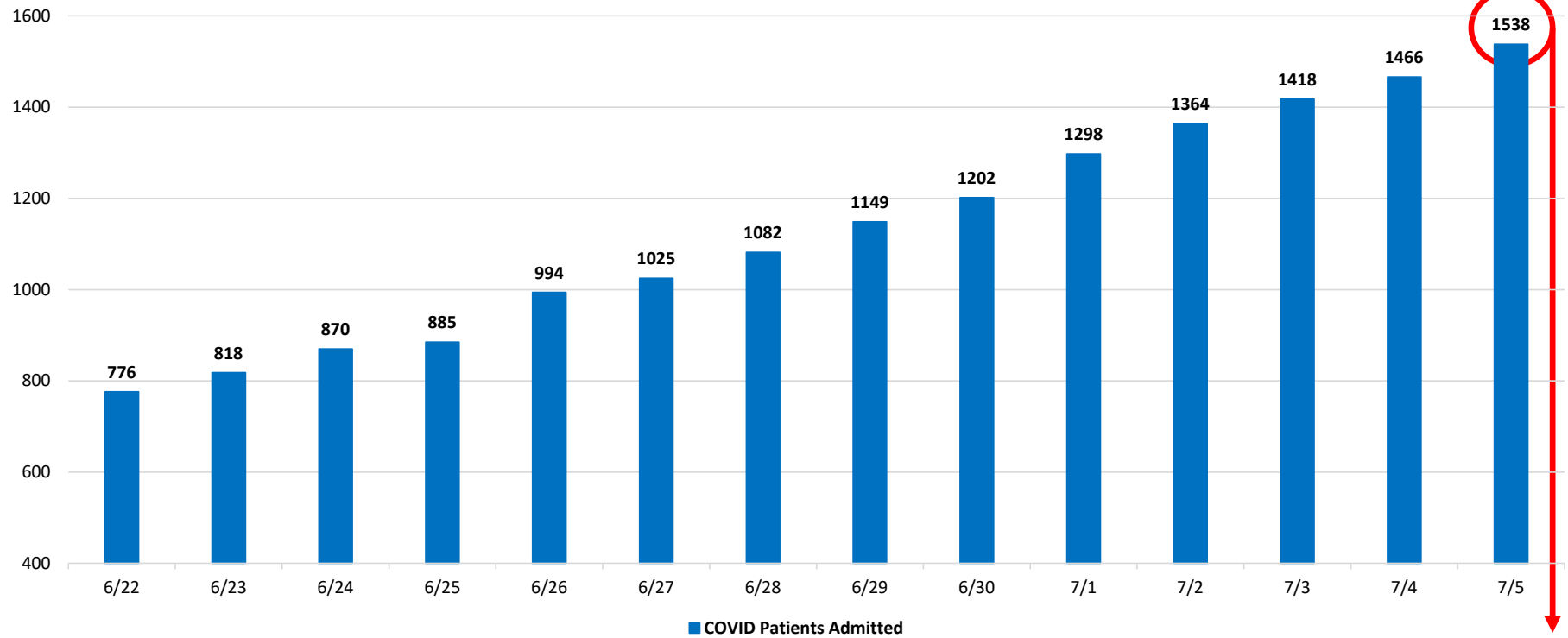
		Miami-Dade	Statewide
	Week of:		
Week 13	March 22, 2020	↔	↓
Week 14	March 29, 2020	↔	↓
Week 15	April 5, 2020	↓	↓
Week 16	April 12, 2020	↓	↓
Week 17	April 19, 2020	↓	↓
Week 18	April 26, 2020	↓	↓
Week 19	May 3, 2020	↓	↓
Week 20	May 10, 2020	↓	↓
Weeks 21 & 22*	May 17, 2020	↓	↓

* Weeks 21 and 22 were reported in a singular report

Source: <http://www.floridahealth.gov/diseases-and-conditions/influenza/florida-influenza-surveillance-report-archive/index.html>

COVID-19 Admitted Patients

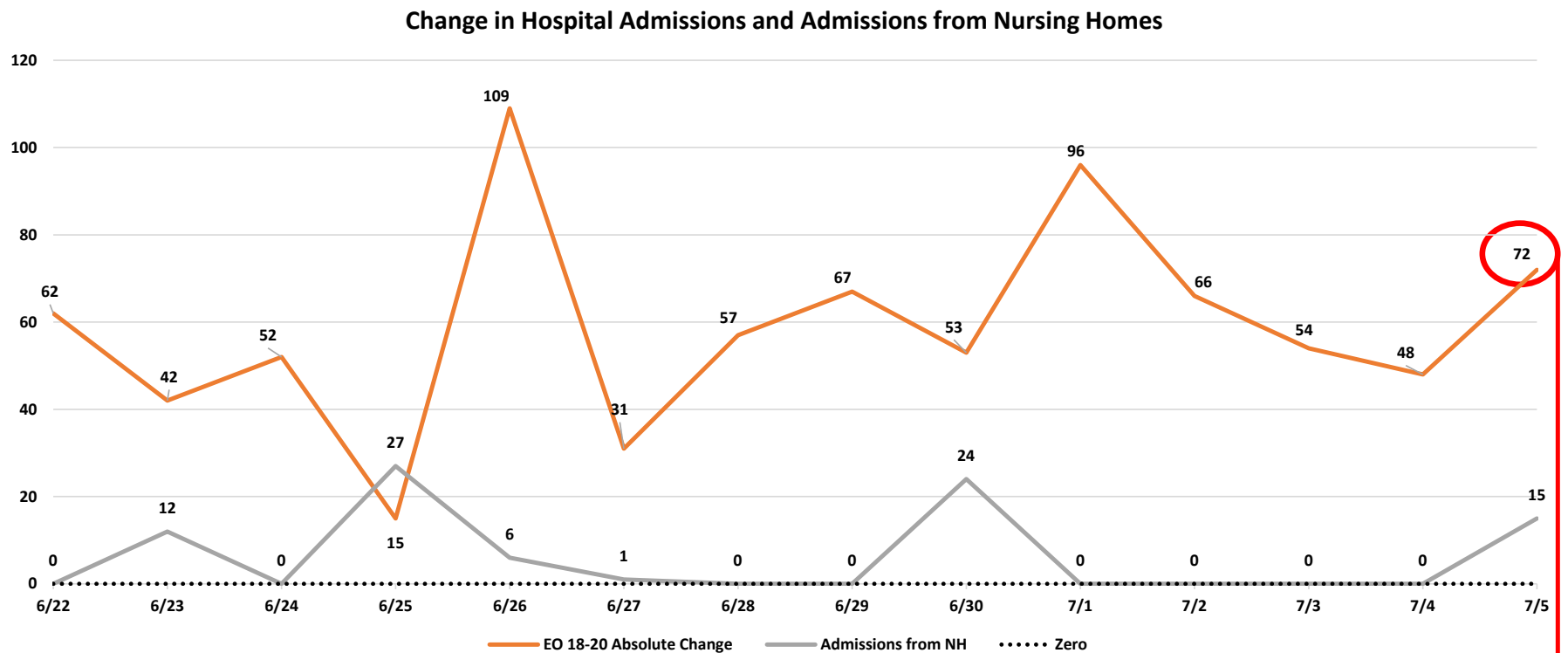
COVID Patients Admitted



Admissions as of 6/26 include facilities that had not been previously reporting. Today's admissions include all facilities.

Source: Self-reported by hospitals as required by Emergency Order 18-20

COVID-19 Admitted Patients from Nursing Homes



Admissions as of 6/26 include facilities that had not been previously reporting. Today's admissions include all facilities.

Source: Emergency Order 18-20 and available Long-Term Care Facilities data provided by the Agency for Healthcare Administration as of 11 AM

DAILY COVID-19 HOSPITAL STATISTICAL REPORT

as of: 07/05/2020 11:32

Available Beds	06/23/2020	06/24/2020	06/25/2020	06/26/2020	06/27/2020	06/28/2020	06/29/2020	06/30/2020	07/01/2020	07/02/2020	07/03/2020	07/04/2020	07/05/2020
Acute Care Beds	2,623	2,573	2,544	2,911	2,892	2,947	2,762	2,788	2,746	2,737	2,815	2,873	2,882
Beds that may be converted to Acute Care Beds	1,294	1,270	1,275	1,332	1,317	1,328	1,266	1,323	1,323	1,306	1,313	1,324	1,336
ICU Beds	466	462	484	451	453	459	473	459	459	448	418	433	434
Beds that may be converted to ICU Beds	514	514	522	530	520	518	522	526	523	522	528	533	532
Ventilators													
Ventilators available for deployment	834	847	852	866	865	860	861	837	838	843	835	817	809
Ventilators on standby	157	158	157	167	163	170	162	161	160	160	150	153	148
Respirators/Anesthesia Machines that maybe converted to Ventilators	466	466	466	467	467	467	467	467	467	467	467	467	467
COVID19 Cases													
COVID Patients Admitted	818	870	885	994	1,025	1,082	1,149	1,202	1,298	1,364	1,418	1,466	1,538
COVID Patients in ICU Beds	155	178	180	195	205	224	236	245	266	281	306	319	331
COVID Patients in Non-ICU Beds	663	692	705	799	820	858	913	957	1,032	1,083	1,112	1,145	1,207
COVID Patients on ventilators	75	74	84	85	87	84	90	103	118	130	138	158	164
COVID19 Patients													
New COVID Patients	114	130	109	122	88	133	117	124	169	156	150	156	138
COVID Patients Discharged	108	142	159	135	66	93	93	116	158	144	157	174	125

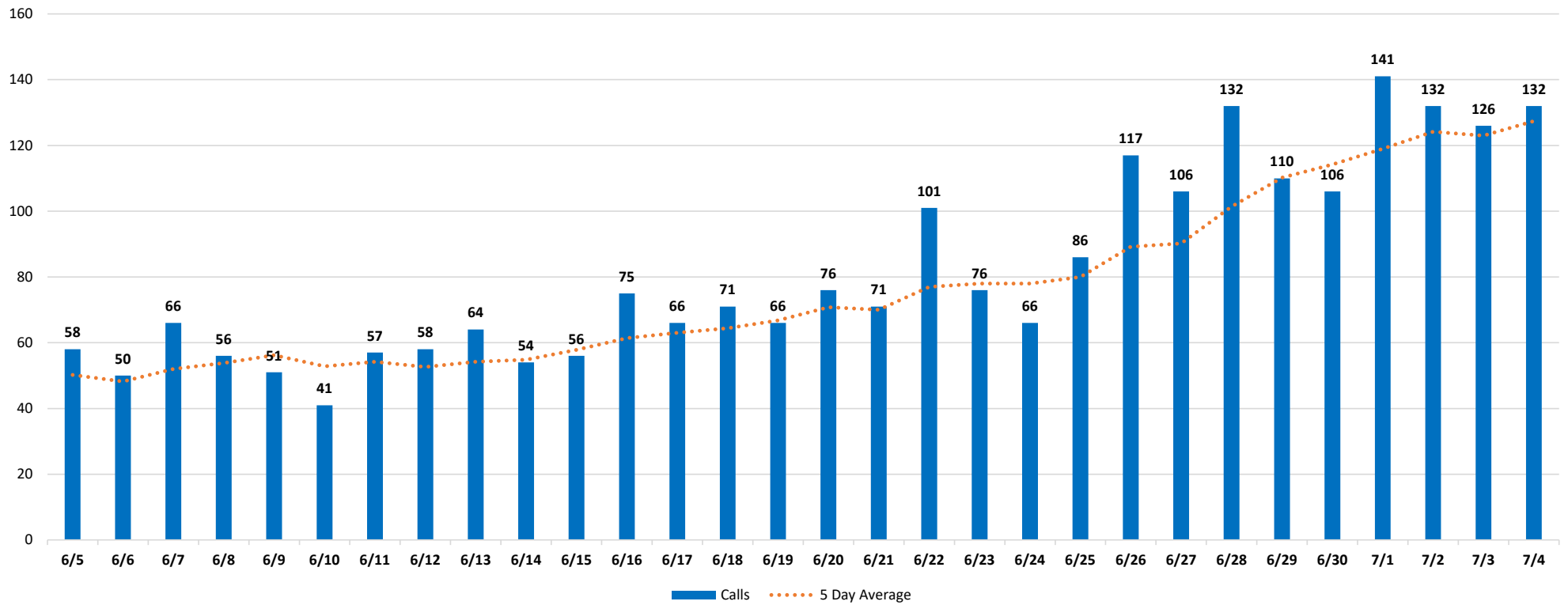
Admissions as of 6/26 include facilities that had not been previously reporting

*This data has been collected and compiled based on Emergency Order 18-20, as of the time noted. The information is submitted by the respective facilities and has not been audited.

** As certain data points are clarified, information reported for prior periods may change

Miami-Dade Fire Rescue Calls

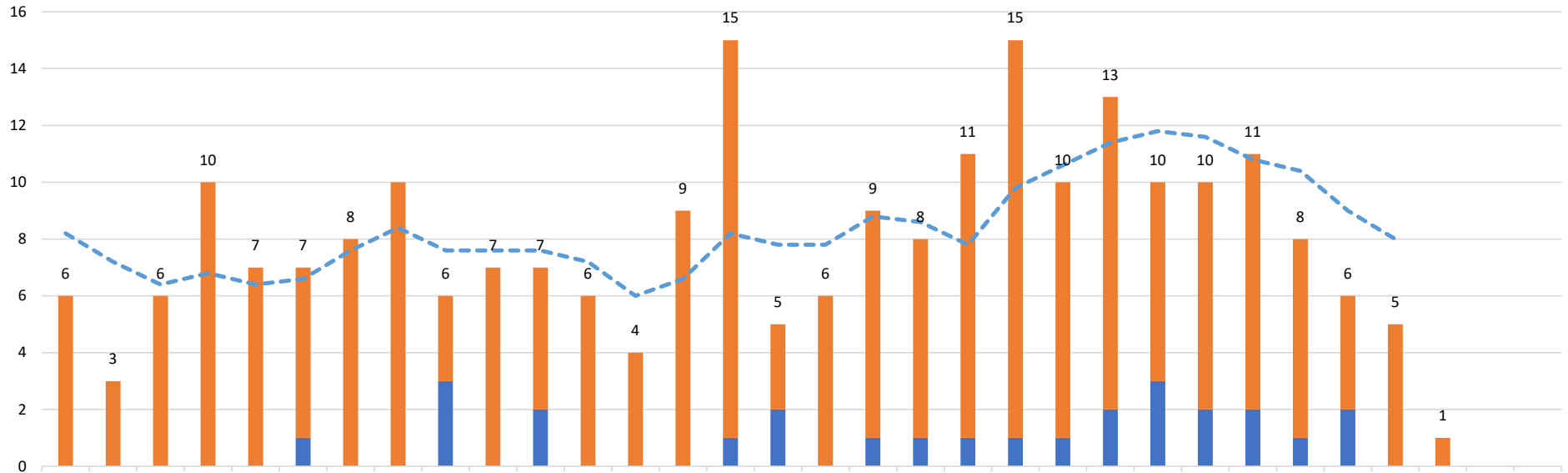
MDFR Suspected COVID-19 Calls



Source: Miami-Dade Fire Rescue

Medical Examiner

Deaths by Day



	6/3	6/4	6/5	6/6	6/7	6/8	6/9	6/10	6/11	6/12	6/13	6/14	6/15	6/16	6/17	6/18	6/19	6/20	6/21	6/22	6/23	6/24	6/25	6/26	6/27	6/28	6/29	6/30	7/1	7/2	7/3	7/4
Above 60	6	3	6	10	7	6	8	10	3	7	5	6	4	9	14	3	6	8	7	10	14	9	11	7	8	9	7	4	5	1		
Under 60						1			3		2				1	2		1	1	1	1	1	2	3	2	2	1	2				
Grand Total	6	3	6	10	7	7	8	10	6	7	7	6	4	9	15	5	6	9	8	11	15	10	13	10	10	11	8	6	5	1		
5 Day Average	8.2	7.2	6.4	6.8	6.4	6.6	7.6	8.4	7.6	7.6	7.6	7.2	6	6.6	8.2	7.8	7.8	8.8	8.6	7.8	9.8	10.6	11.4	11.8	11.6	10.8	10.4	9	8			

■ Under 60
 ■ Above 60
 Grand Total
 - - - 5 Day Average

The 5 day rolling average does not include the last 3 days to allow for the ME to certify recent deaths

Source: Miami-Dade Medical Examiner