

# Moving to a New Normal Dashboard


---

July 17, 2020




# Daily Summary

## 1 Downward trajectory of documented cases within a 14-day period



As of **07/17/2020**  
New Positives: **2,442**  
Trend: 

## 2 14 consecutive days where positive test rate is below 10% on average\*

As of **07/17/2020**  
Average of the Last 14 Days  **27.05%**

## 3 30% Total and ICU Bed Capacity Available\*\*

As of **07/17/2020**

COVID non-ICU Admissions	1,633	
non-ICU Bed Capacity	2,563	 <b>63.71%</b>
COVID ICU Admissions	459	
ICU Bed Capacity	386	 <b>118.91%</b>

## 4 Schedule viral testing of healthcare workers including in nursing homes

*In Progress*

## 5 Plan in place to monitor and manage hospital capacity and vulnerable populations

*In Progress*

## 6 Countywide contact tracing program with a target headcount of 100 tracers by May 31

*Complete*

FDOH has more than 175 contact tracers in place

## 7 Sector safety guidelines developed and communicated

*In Progress*

Yellow Phase guidelines have been communicated and are being monitored

## 8 Plan in place to open public transit that protects workers and commuters

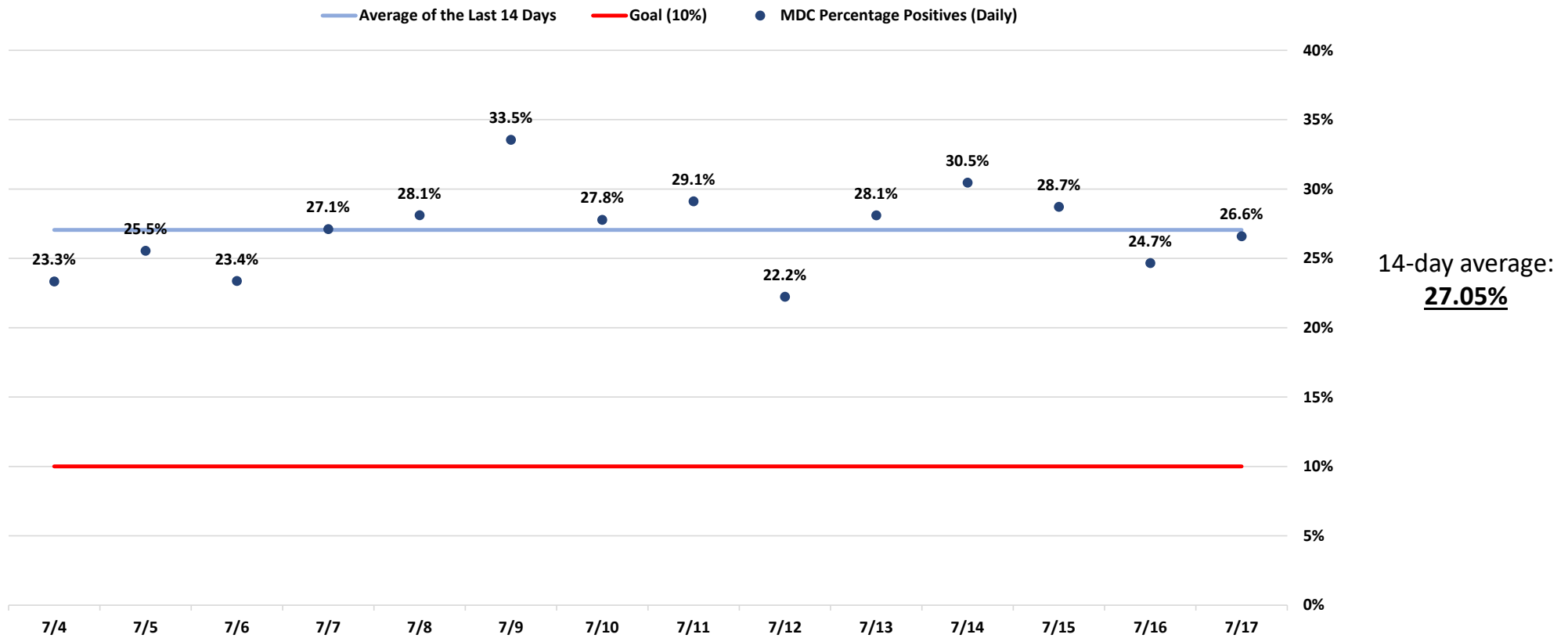
*In Progress*

Guidelines have been communicated and are being monitored

*\* Reflects the positive rate for the test results reported today*

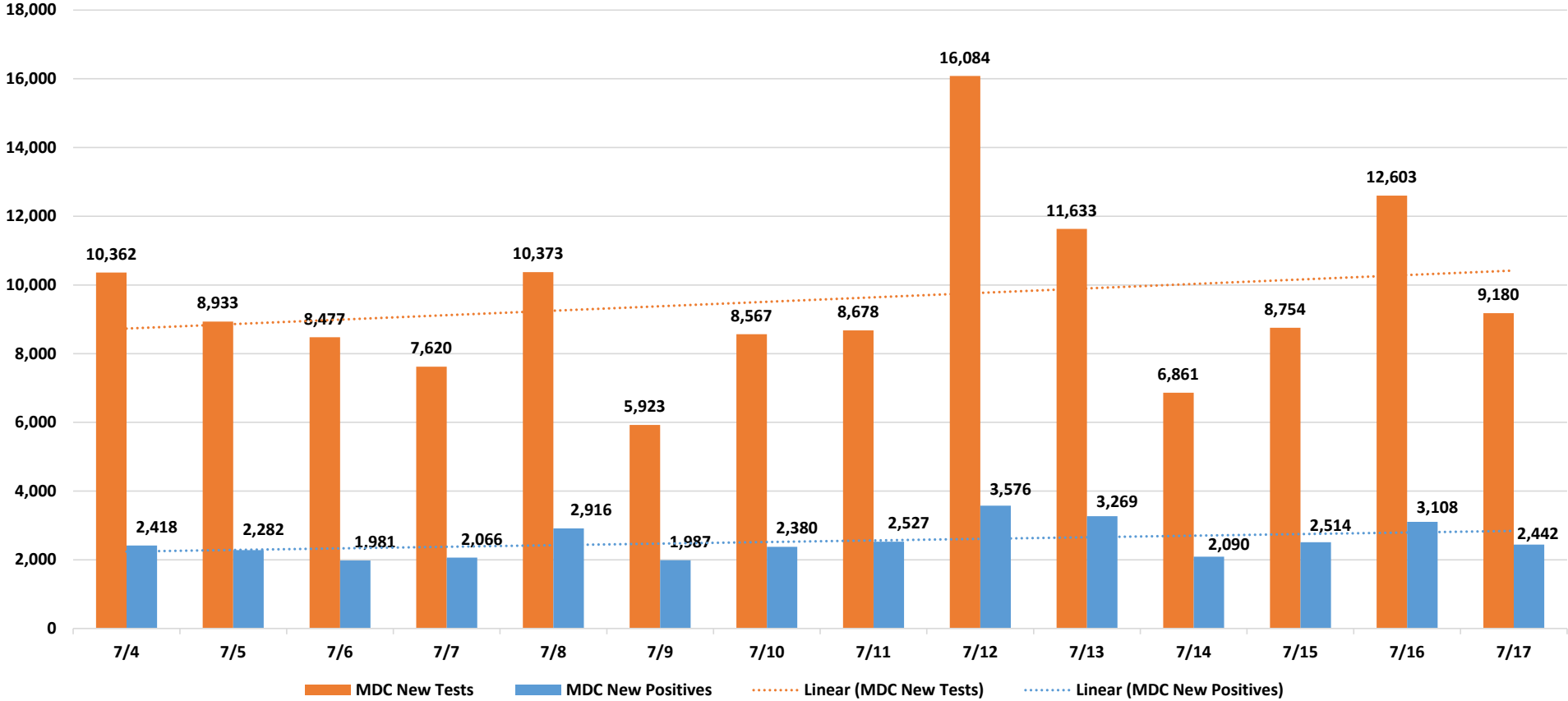
*\*\* Percentage represents the number of COVID positive patients utilizing hospital beds; does not include the 1,267 acute care and ICU beds that may be converted*

# Daily Positive Cases out of Total Tests



Source: Daily reports published by the Florida Division of Emergency Management

# New Positive Cases



Source: Daily reports published by the Florida Division of Emergency Management

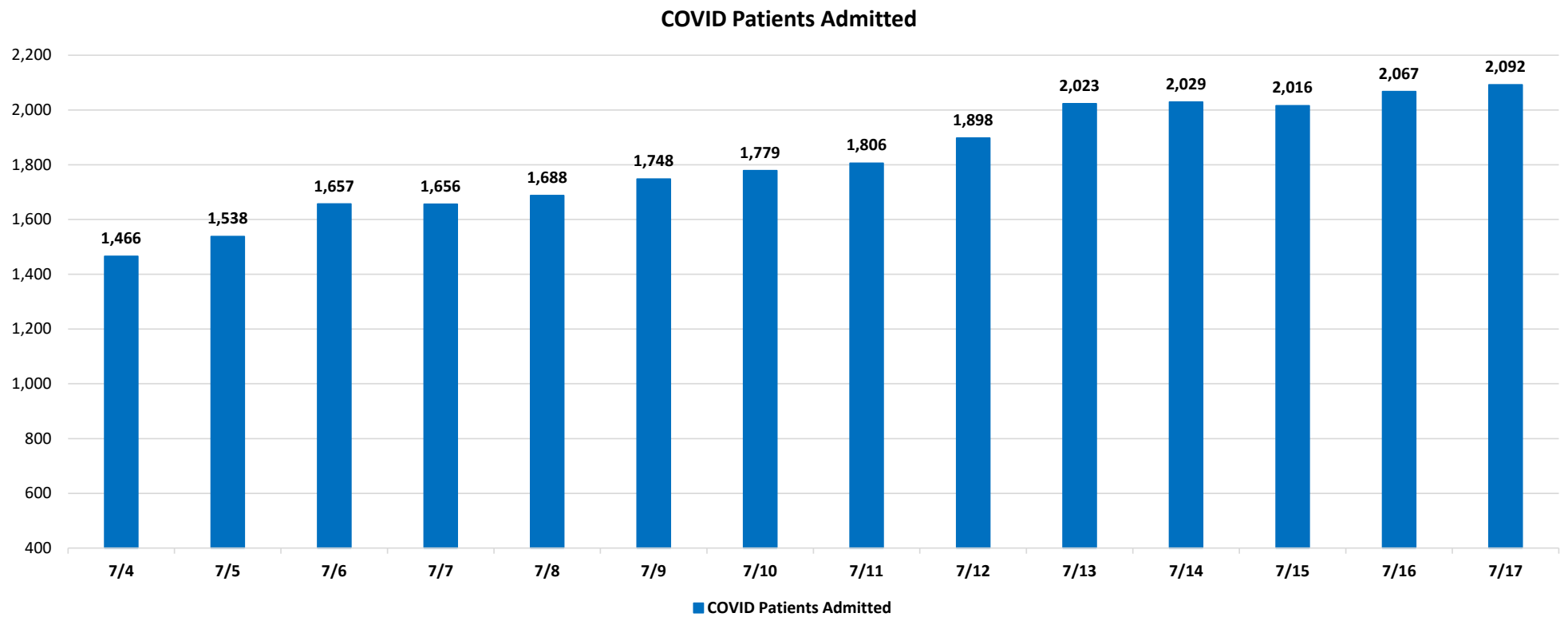
# Florida Influenza Surveillance Reports Influenza-like Illness (ILI) Cases

		Miami-Dade	Statewide
	<b>Week of:</b>		
Week 13	March 22, 2020	↔	↓
Week 14	March 29, 2020	↔	↓
Week 15	April 5, 2020	↓	↓
Week 16	April 12, 2020	↓	↓
Week 17	April 19, 2020	↓	↓
Week 18	April 26, 2020	↓	↓
Week 19	May 3, 2020	↓	↓
Week 20	May 10, 2020	↓	↓
Weeks 21 & 22*	May 17, 2020	↓	↓

\* Weeks 21 and 22 were reported in a singular report

Source: <http://www.floridahealth.gov/diseases-and-conditions/influenza/florida-influenza-surveillance-report-archive/index.html>

# COVID-19 Admitted Patients



Source: Self-reported by hospitals as required by Emergency Order 18-20

**DAILY COVID-19 HOSPITAL STATISTICAL REPORT**

as of: 07/17/2020 11:17

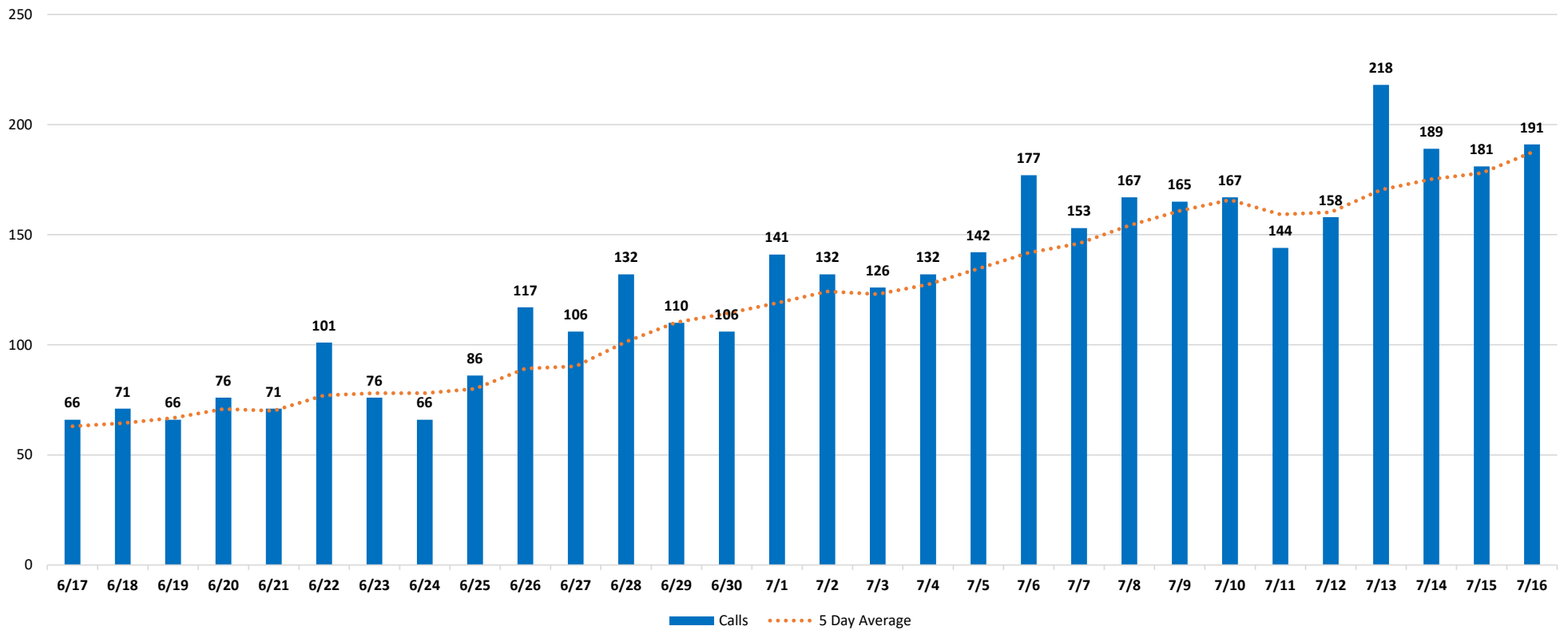
	07/04/2020	07/05/2020	07/06/2020	07/07/2020	07/08/2020	07/09/2020	07/10/2020	07/11/2020	07/12/2020	07/13/2020	07/14/2020	07/15/2020	07/16/2020	07/17/2020
<b>Available Beds</b>														
Acute Care Beds	2,873	2,882	2,801	2,761	2,847	2,857	2,838	2,840	2,859	2,810	2,556	2,591	3,049	2,563
Beds that may be converted to Acute Care Beds	1,324	1,336	1,320	1,318	1,301	1,323	1,319	1,321	1,321	1,299	1,309	1,301	866	809
ICU Beds	433	434	439	429	435	395	397	403	418	423	405	405	440	386
Beds that may be converted to ICU Beds	533	532	530	537	535	479	467	467	467	467	467	468	458	458
<b>Ventilators</b>														
Ventilators available for deployment	817	809	810	794	773	797	771	771	780	785	755	740	722	725
Ventilators on standby	153	148	150	151	143	138	140	137	136	130	126	129	95	98
Respirators/Anesthesia Machines that maybe converted to Ventilators	467	467	467	467	467	467	467	467	467	467	467	467	467	467
<b>COVID-19 Cases</b>														
COVID Patients Admitted	1,466	1,538	1,657	1,656	1,688	1,748	1,779	1,806	1,898	2,023	2,029	2,016	2,067	2,092
COVID Patients in ICU Beds	319	331	331	343	358	363	386	382	393	413	438	431	472	459
COVID Patients in Non-ICU Beds	1,145	1,207	1,326	1,313	1,330	1,385	1,393	1,424	1,505	1,610	1,591	1,585	1,595	1,633
COVID Patients on ventilators	158	164	168	175	184	190	194	194	206	215	226	228	257	266
<b>COVID-19 Patients</b>														
New COVID Patients	156	138	163	184	185	205	189	179	189	236	182	219	187	177
COVID Patients Discharged	174	125	90	193	200	166	221	221	168	137	222	278	215	187

\*This data has been collected and compiled based on Emergency Order 18-20, as of the time noted. The information is submitted by the respective facilities and has not been audited.

\*\* As certain data points are clarified, information reported for prior periods may change

# Miami-Dade Fire Rescue Calls

## MDFR Suspected COVID-19 Calls

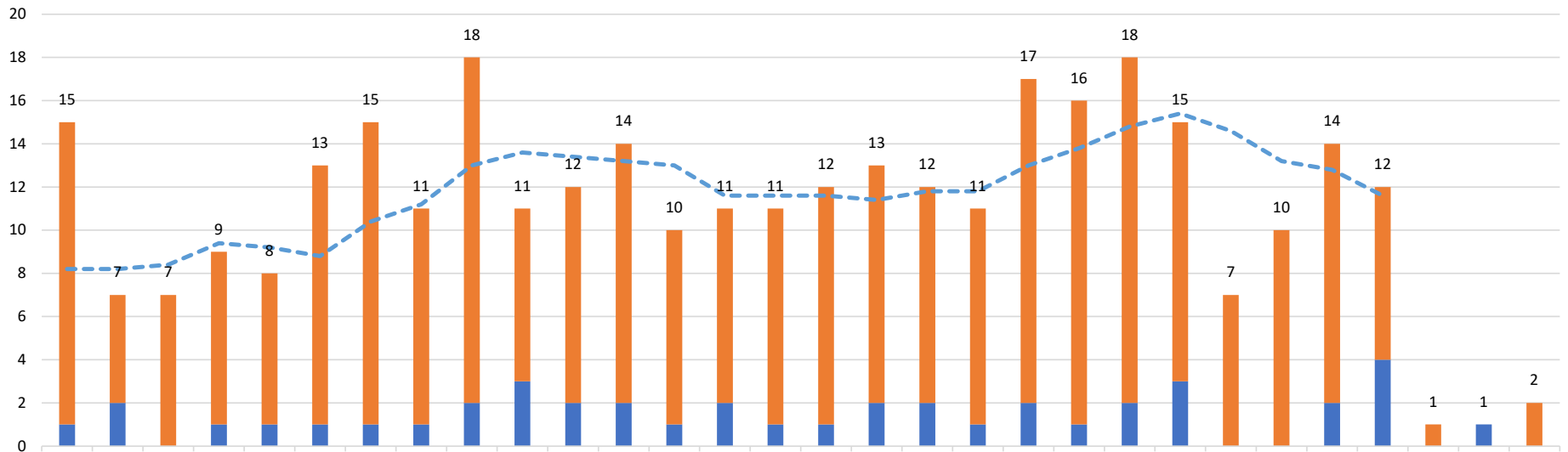


Source: Miami-Dade Fire Rescue



# Medical Examiner

Deaths by Day



	6/17	6/18	6/19	6/20	6/21	6/22	6/23	6/24	6/25	6/26	6/27	6/28	6/29	6/30	7/1	7/2	7/3	7/4	7/5	7/6	7/7	7/8	7/9	7/10	7/11	7/12	7/13	7/14	7/15	7/16
Above 60	14	5	7	8	7	12	14	10	16	8	10	12	9	9	10	11	11	10	10	15	15	16	12	7	10	12	8	1	1	2
Under 60	1	2		1	1	1	1	1	2	3	2	2	1	2	1	1	2	2	1	2	1	2	3			2	4		1	
Grand Total	15	7	7	9	8	13	15	11	18	11	12	14	10	11	11	12	13	12	11	17	16	18	15	7	10	14	12	1	1	2
5 Day Average	8.2	8.2	8.4	9.4	9.2	8.8	10.4	11.2	13	13.6	13.4	13.2	13	11.6	11.6	11.6	11.4	11.8	11.8	13	13.8	14.8	15.4	14.6	13.2	12.8	11.6			

■ Under 60   
 ■ Above 60   
 Grand Total   
 - - - 5 Day Average

The 5 day rolling average does not include the last 3 days to allow for the ME to certify recent deaths

Source: Miami-Dade Medical Examiner