

Moving to a New Normal Dashboard

July 20, 2020




Daily Summary

1 Downward trajectory of documented cases within a 14-day period

As of **07/20/2020**

New Positives: **2,797**

Trend: 

2 14 consecutive days where positive test rate is below 10% on average*

As of **07/19/2020**


% Positive of the Tests Reported 28.1%


State Reported % Positive 22.6%

Jackson Health
System Positive Rate 38.0%

3 30% Total and ICU Bed Capacity Available**

As of **07/20/2020**

COVID non-ICU Admissions 1,765
non-ICU Bed Capacity 2,509  **70.35%**

COVID ICU Admissions 513
ICU Bed Capacity 394  **130.20%**

4 Schedule viral testing of healthcare workers including in nursing homes

In Progress

5 Plan in place to monitor and manage hospital capacity and vulnerable populations

In Progress

6 Countywide contact tracing program with a target headcount of 100 tracers by May 31

Complete

FDOH has more than 175 contact tracers in place and will be provided additional resources as needed.

7 Sector safety guidelines developed and communicated

In Progress

Yellow Phase guidelines have been communicated and are being monitored

8 Plan in place to open public transit that protects workers and commuters

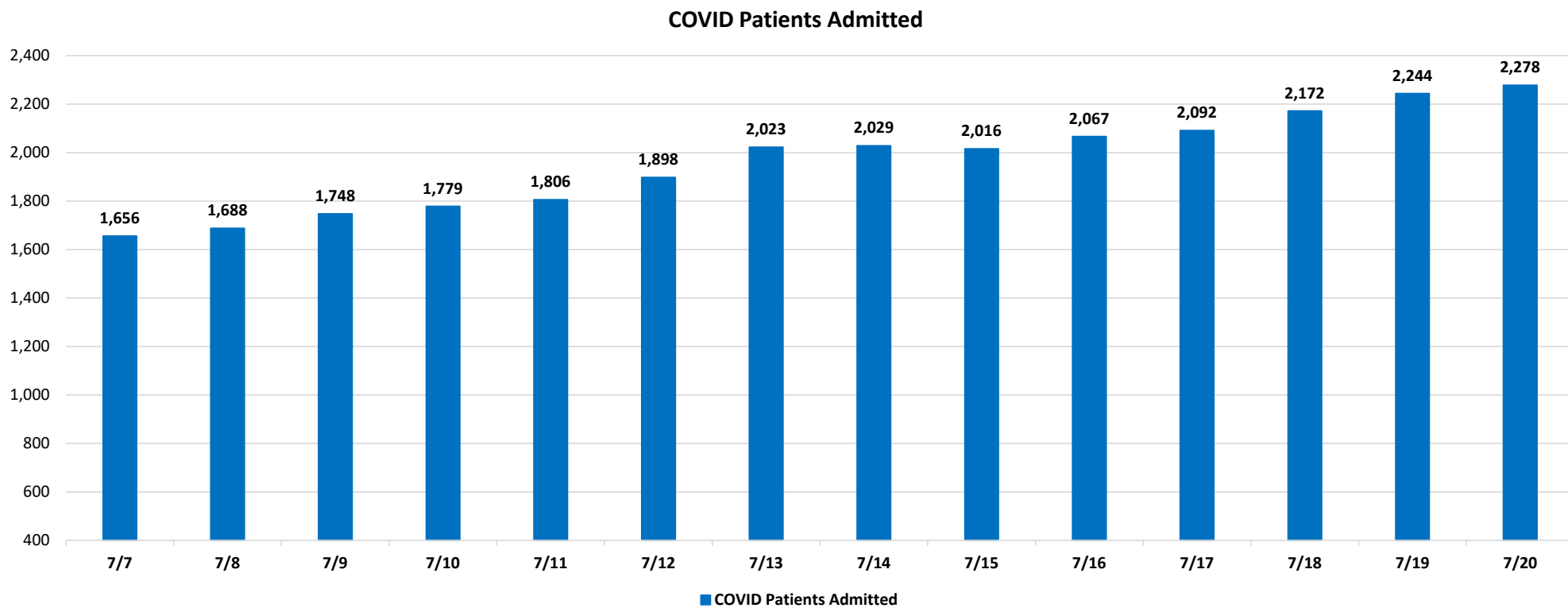
In Progress

Guidelines have been communicated and are being monitored

* Reflects the positive rate for the test results reported today

** Percentage represents the number of COVID positive patients utilizing hospital beds; does not include the 1,279 acute care and ICU beds that may be converted

COVID-19 Admitted Patients



Source: Self-reported by hospitals as required by Emergency Order 18-20

DAILY COVID-19 HOSPITAL STATISTICAL REPORT

as of: 07/20/2020 11:14

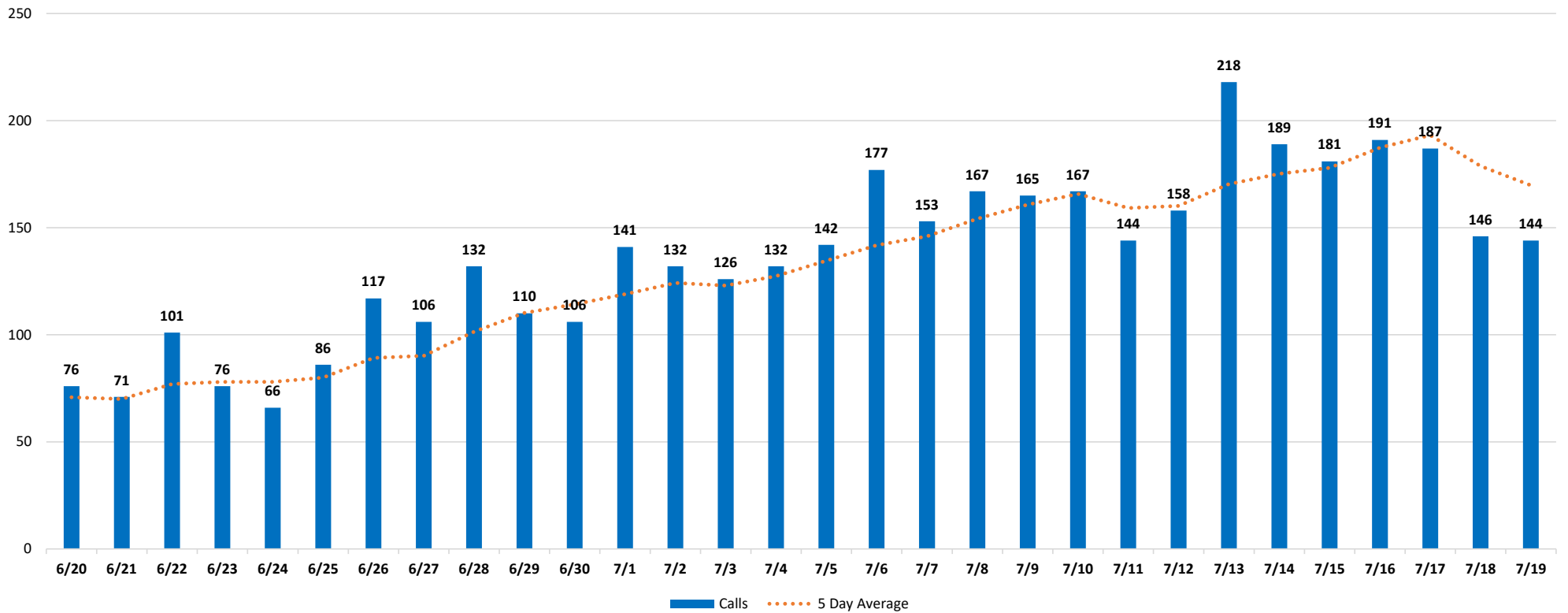
	07/07/2020	07/08/2020	07/09/2020	07/10/2020	07/11/2020	07/12/2020	07/13/2020	07/14/2020	07/15/2020	07/16/2020	07/17/2020	07/18/2020	07/19/2020	07/20/2020
Available Beds														
Acute Care Beds	2,761	2,847	2,857	2,838	2,840	2,859	2,810	2,556	2,591	3,049	2,563	2,514	2,604	2,509
Beds that may be converted to Acute Care Beds	1,318	1,301	1,323	1,319	1,321	1,321	1,299	1,309	1,301	866	809	813	802	823
ICU Beds	429	435	395	397	403	418	423	405	405	440	386	396	398	394
Beds that may be converted to ICU Beds	537	535	479	467	467	467	467	467	468	458	458	457	457	456
Ventilators														
Ventilators available for deployment	794	773	797	771	771	780	785	755	740	722	725	746	740	718
Ventilators on standby	151	143	138	140	137	136	130	126	129	95	98	97	99	73
Respirators/Anesthesia Machines that maybe converted to Ventilators	467	467	467	467	467	467	467	467	467	467	467	467	467	466
COVID-19 Cases														
COVID Patients Admitted	1,656	1,688	1,748	1,779	1,806	1,898	2,023	2,029	2,016	2,067	2,092	2,172	2,244	2,278
COVID Patients in ICU Beds	343	358	363	386	382	393	413	438	431	472	459	484	507	513
COVID Patients in Non-ICU Beds	1,313	1,330	1,385	1,393	1,424	1,505	1,610	1,591	1,585	1,595	1,633	1,688	1,737	1,765
COVID Patients on ventilators	175	184	190	194	194	206	215	226	228	257	266	269	286	293
COVID-19 Patients														
New COVID Patients	184	185	205	189	179	189	236	182	219	187	177	212	153	180
COVID Patients Discharged	193	200	166	221	221	168	137	222	278	215	187	206	130	145

*This data has been collected and compiled based on Emergency Order 18-20, as of the time noted. The information is submitted by the respective facilities and has not been audited.

** As certain data points are clarified, information reported for prior periods may change

Miami-Dade Fire Rescue Calls

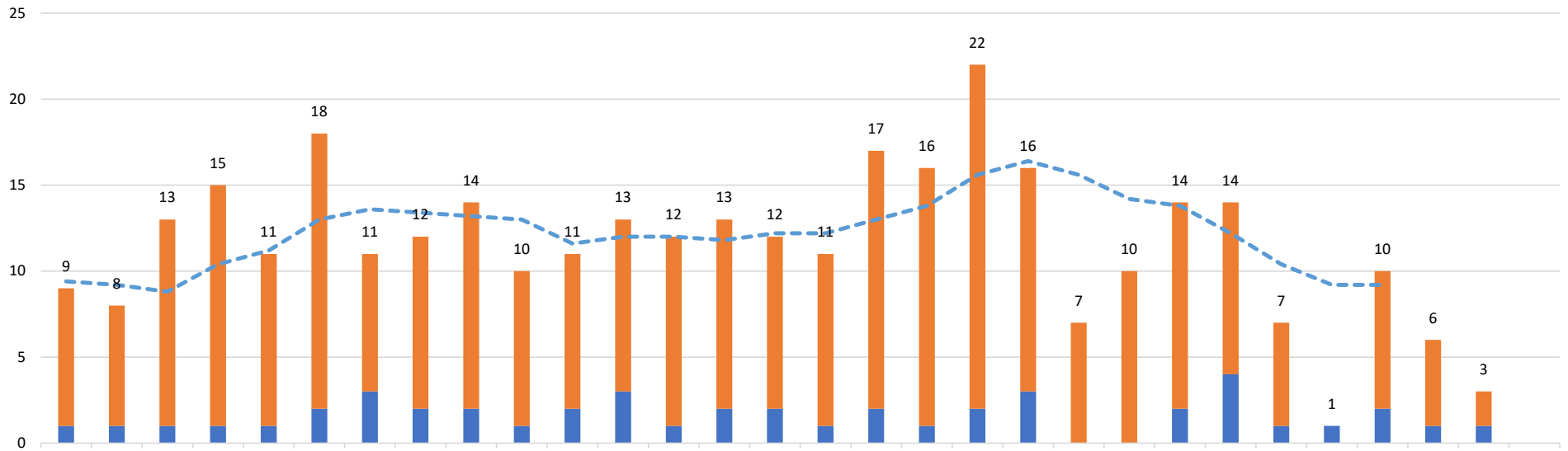
MDFR Suspected COVID-19 Calls



Source: Miami-Dade Fire Rescue

Medical Examiner

Deaths by Day



	6/20	6/21	6/22	6/23	6/24	6/25	6/26	6/27	6/28	6/29	6/30	7/1	7/2	7/3	7/4	7/5	7/6	7/7	7/8	7/9	7/10	7/11	7/12	7/13	7/14	7/15	7/16	7/17	7/18	7/19
Above 60	8	7	12	14	10	16	8	10	12	9	9	10	11	11	10	10	15	15	20	13	7	10	12	10	6	8	5	2		
Under 60	1	1	1	1	1	2	3	2	2	1	2	3	1	2	2	1	2	1	2	3			2	4	1	1	2	1	1	
Grand Total	9	8	13	15	11	18	11	12	14	10	11	13	12	13	12	11	17	16	22	16	7	10	14	14	7	1	10	6	3	
5 Day Average	9.4	9.2	8.8	10.4	11.2	13	13.6	13.4	13.2	13	11.6	12	12	11.8	12.2	12.2	13	13.8	15.6	16.4	15.6	14.2	13.8	12.2	10.4	9.2	9.2			

■ Under 60
 ■ Above 60
 Grand Total
 - - - 5 Day Average

The 5 day rolling average does not include the last 3 days to allow for the ME to certify recent deaths

Source: Miami-Dade Medical Examiner