

Moving to a New Normal Dashboard

August 26, 2020




Daily Summary

Moving to a New Normal Dashboard Summary

1) Downward trajectory of documented cases within a 14-day period

As of : **08/26/2020**

New Reported Positives: **790**

Trend: 

2) 14 consecutive days where positive test rate is below 10% on average

Daily Positive Rate: 7.67%

14-day Average: 9.93%

Cumulative Positive Rate: 19.35%

Total Positives: 152,939

Total People Tested: 790,393

JHS Positive Rate: 11%

3) 30% Total and ICU Bed Capacity Available*

As of : **08/26/2020**

COVID non-ICU Admissions: 682

Available non-ICU beds: 5,370

COVID ICU Admissions: 248

Available ICU beds: 998

4) Miami-Dade Fire Rescue COVID Calls

Calls for: **08/25/2020**

Suspected COVID-19 Calls: 85

5-day Average: 77

5) Plan in place to monitor and manage hospital capacity and vulnerable

In Progress

6) Lab Turnaround Time Reported by FDOH

Cases Reported on: **08/25/2020**

less than 3 days: 69.3%

4 - 7 days: 27.2%

7 or more days: 3.5%

7) Countywide contact tracing program with a target headcount of 100 tracers by May 31

Complete. As of 7/30, there are 350 contact tracers in place

8) Sector safety guidelines developed and communicated

In Progress

9) Plan in place to open public transit that protects workers and commuters

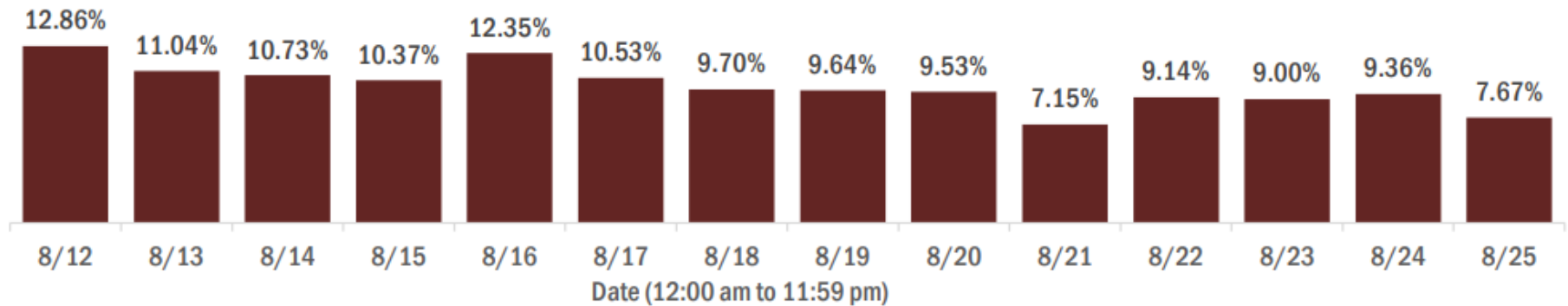
In Progress

** Percentage represents the number of COVID positive patients utilizing hospital beds; does not include the 1,213 acute care and ICU beds that may be converted*

COVID-19 Daily Positive Rate

Percent positivity for new cases in Florida residents

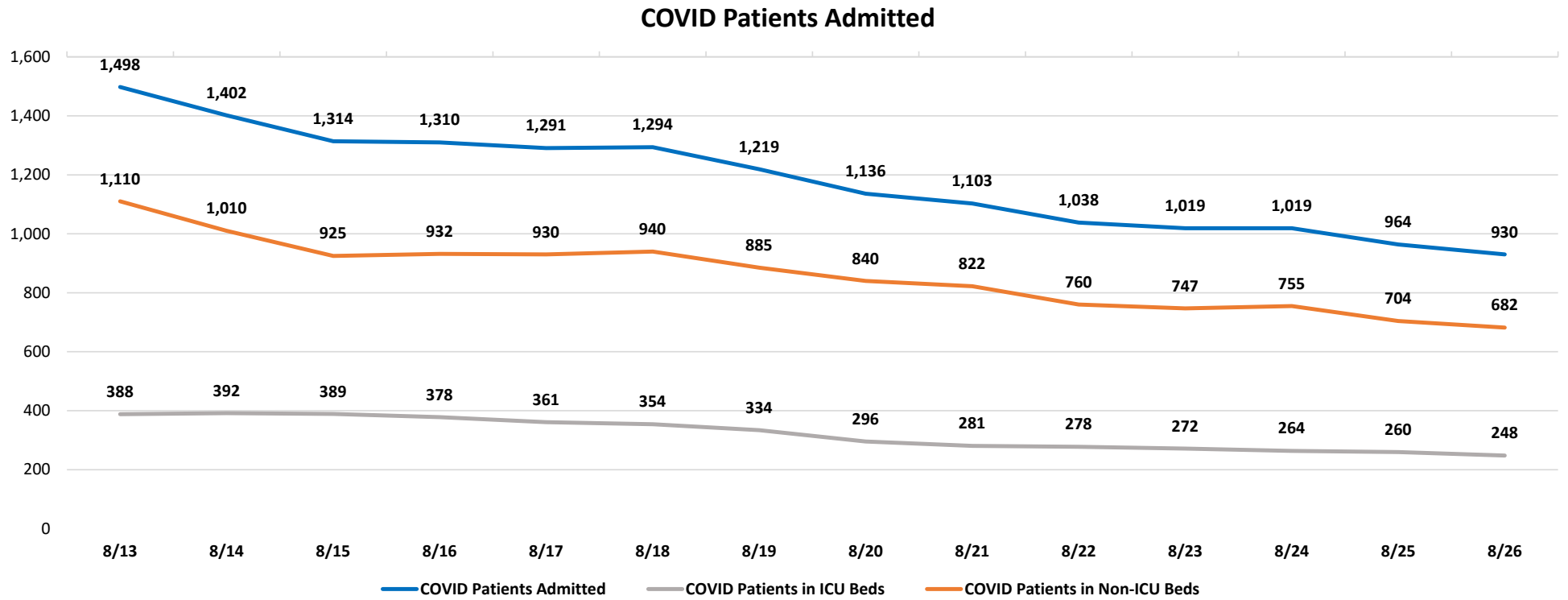
These counts include the number of Florida residents for whom the department received PCR or antigen laboratory results by day. This percent is the number of people who test positive for the first time divided by all the people tested that day, excluding people who have previously tested positive.



14-day average: 9.93%

Data Source: The daily positivity rate as reported by the State of Florida on the "County Report"
http://ww11.doh.state.fl.us/comm/partners/covid19_report_archive/county_reports_latest.pdf

COVID-19 Admitted Patients



Data Source: Self-reported by hospitals as required by Emergency Order 18-20

DAILY COVID-19 HOSPITAL STATISTICAL REPORT

as of: 08/26/2020 11:58

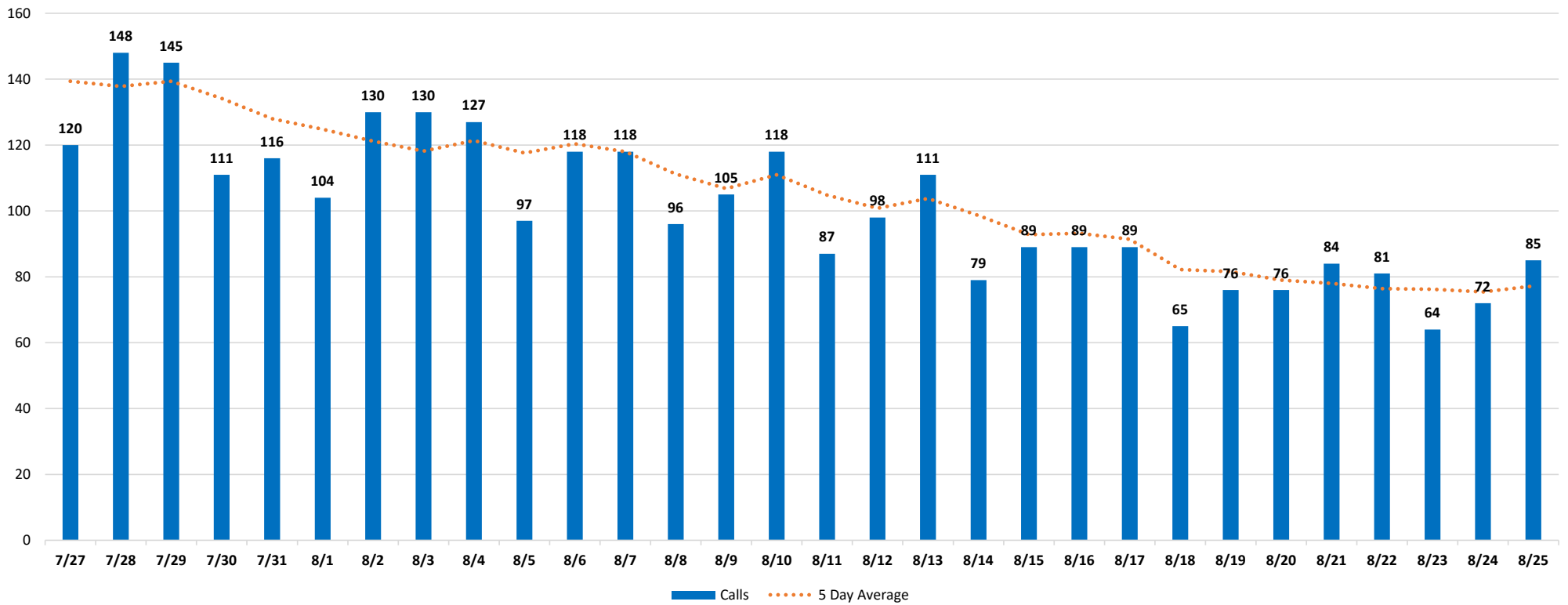
	08/13/2020	08/14/2020	08/15/2020	08/16/2020	08/17/2020	08/18/2020	08/19/2020	08/20/2020	08/21/2020	08/22/2020	08/23/2020	08/24/2020	08/25/2020	08/26/2020
Available Beds														
Acute Care Beds	5,284	5,366	5,364	5,364	5,362	5,363	5,363	5,360	5,360	5,360	5,360	5,363	5,368	5,370
Beds that may be converted to Acute Care Beds	769	769	769	769	766	763	760	759	757	757	757	760	763	757
ICU Beds	1,012	1,014	1,014	1,014	1,014	1,015	1,016	1,016	1,016	1,016	1,007	1,005	1,006	998
Beds that may be converted to ICU Beds	475	456	455	455	455	456	456	455	457	455	455	455	455	456
Ventilators														
Ventilators available for deployment	811	789	794	796	790	785	817	811	822	841	851	848	855	857
Ventilators on standby	144	135	126	124	116	114	119	120	121	123	124	124	117	109
Respirators/Anesthesia Machines that maybe converted to Ventilators	429	441	441	441	440	440	441	439	440	440	441	441	441	440
COVID-19 Cases														
COVID Patients Admitted	1,498	1,402	1,314	1,310	1,291	1,294	1,219	1,136	1,103	1,038	1,019	1,019	964	930
COVID Patients in ICU Beds	388	392	389	378	361	354	334	296	281	278	272	264	260	248
COVID Patients in Non-ICU Beds	1,110	1,010	925	932	930	940	885	840	822	760	747	755	704	682
COVID Patients on ventilators	272	278	275	271	271	267	267	237	234	221	218	207	210	204
COVID-19 Patients														
New COVID Patients	98	76	72	65	58	93	82	67	83	65	58	64	62	53
COVID Patients Discharged	154	168	175	81	69	150	155	150	122	115	77	56	114	119

*This data has been collected and compiled based on Emergency Order 18-20, as of the time noted. The information is submitted by the respective facilities and has not been audited.

** As certain data points are clarified, information reported for prior periods may change

Miami-Dade Fire Rescue Calls

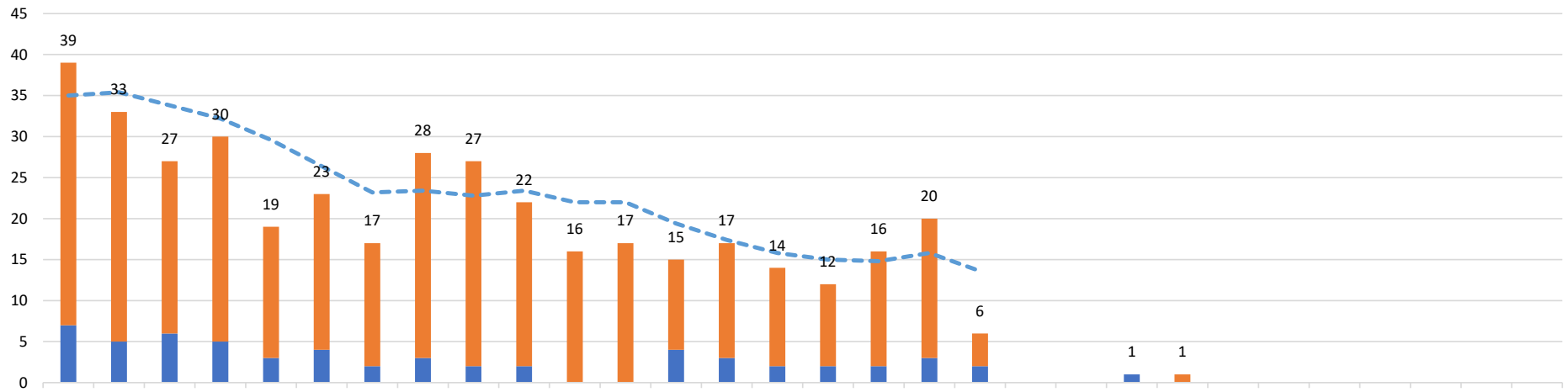
MDFR Suspected COVID-19 Calls



Data Source: Miami-Dade Fire Rescue

Medical Examiner

Deaths by Day



	7/27	7/28	7/29	7/30	7/31	8/1	8/2	8/3	8/4	8/5	8/6	8/7	8/8	8/9	8/10	8/11	8/12	8/13	8/14	8/15	8/16	8/17	8/18	8/19	8/20	8/21	8/22	8/23	8/24	8/25
Above 60	32	28	21	25	16	19	15	25	25	20	16	17	11	14	12	10	14	17	4				1							
Under 60	7	5	6	5	3	4	2	3	2	2			4	3	2	2	2	3	2			1								
Grand Total	39	33	27	30	19	23	17	28	27	22	16	17	15	17	14	12	16	20	6			1	1							
5 Day Average	35	35.4	33.8	32.2	29.6	26.4	23.2	23.4	22.8	23.4	22	22	19.4	17.4	15.8	15	14.8	15.8	13.6											

■ Under 60
 ■ Above 60
 Grand Total
 - - - 5 Day Average

An August 15th decision by the Florida Medical Examiner Commission determined that "treating physicians may certify COVID-19 deaths" so long as certain conditions are met. While this decision will expedite such process, it will result in the County's ME reporting and certifying a lower number of deaths. The administration will work closely with FDOH to ensure that the appropriate figures are reported.

Data Source: Miami-Dade Medical Examiner