

Moving to a New Normal Dashboard

September 1, 2020



Daily Summary

Daily Notes:


The cases and positivity rates for 8/31 includes a one-time historical data submission from a large laboratory that affected some counties. The percent positivity on 8/31 excluding the historical data submission was 8.02%.

Moving to a New Normal Dashboard Summary

1) Downward trajectory of documented cases within a 14-day period

As of : **09/01/2020**

New Reported Positives: **866**

Trend: 

2) 14 consecutive days where positive test rate is below 10% on average

Daily Positive Rate: 8.02%

14-day Average: 8.22%

Cumulative Positive Rate: 19.22%

Total Positives: 157,843

Total People Tested: 821,198

JHS Positive Rate: 10%

3) 30% Total and ICU Bed Capacity Available*

As of : **09/01/2020**

COVID non-ICU Admissions: 578

Available non-ICU beds: 5,371

COVID ICU Admissions: 208

Available ICU beds: 980

4) Miami-Dade Fire Rescue COVID Calls

Calls for: **08/31/2020**

Suspected COVID-19 Calls: 61

5-day Average: 64

s

5) Plan in place to monitor and manage hospital capacity and vulnerable

In Progress

6) Lab Turnaround Time Reported by FDOH

Cases Reported on: **08/28/2020**

less than 3 days: 90.35%

4 - 7 days: 8.72%

7 or more days: 0.93%

7) Countywide contact tracing program with a target headcount of 100 tracers by May 31

Complete. As of 7/30, there are 350 contact tracers in place

8) Sector safety guidelines developed and communicated

In Progress

9) Plan in place to open public transit that protects workers and commuters

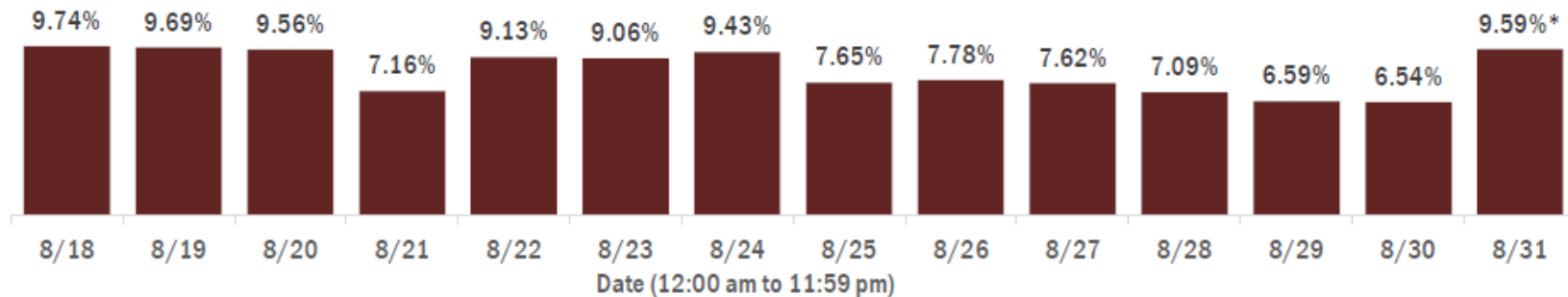
In Progress

* Percentage represents the number of COVID positive patients utilizing hospital beds; does not include the 1,238 acute care and ICU beds that may be converted

COVID-19 Daily Positive Rate

Percent positivity for new cases in Florida residents

These counts include the number of Florida residents for whom the department received PCR or antigen laboratory results by day. This percent is the number of people who test positive for the first time divided by all the people tested that day, excluding people who have previously tested positive.



* Includes a one-time historical data submission from a large laboratory that affected some counties. The percent positivity on 8/31 excluding the historical data submission was 8.02%.

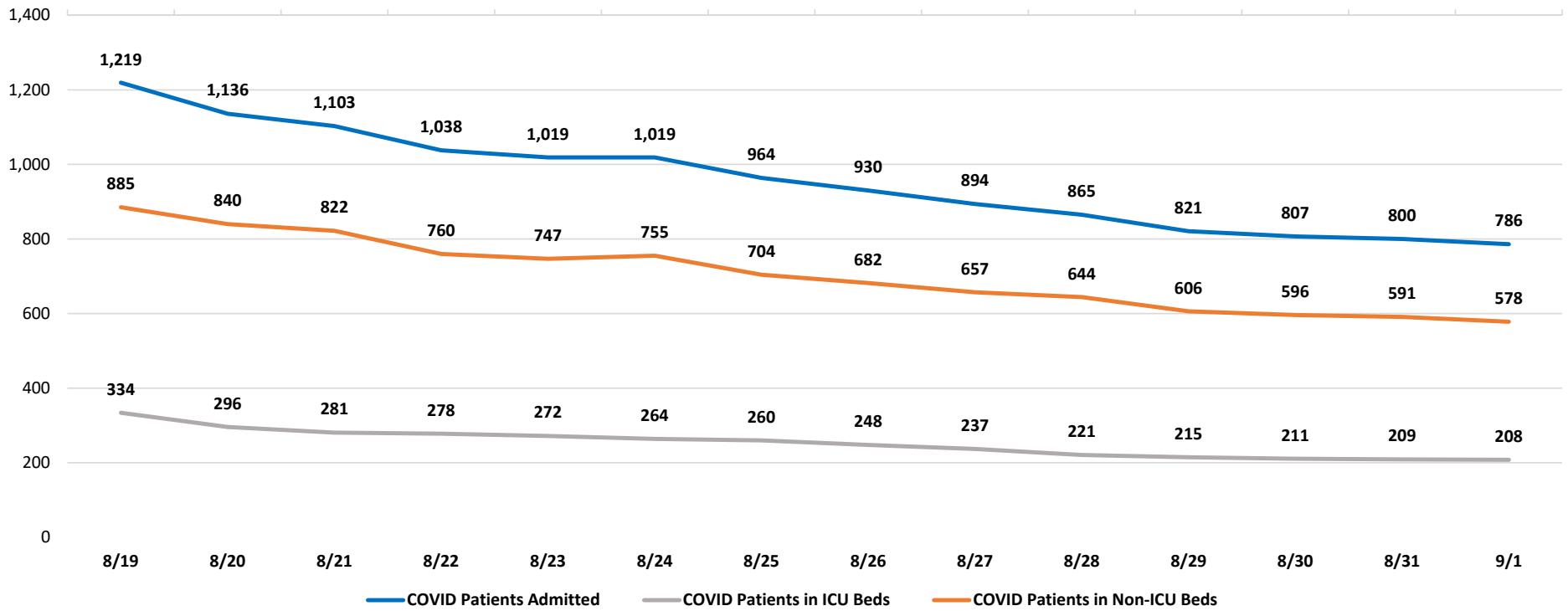
14-day average: 8.22%

The cases and positivity rates for 8/31 includes a one-time historical data submission from a large laboratory that affected some counties. The percent positivity on 8/31 excluding the historical data submission was 8.02%.

Data Source: The daily positivity rate as reported by the State of Florida on the "County Report"
http://ww11.doh.state.fl.us/comm/_partners/covid19_report_archive/county_reports_latest.pdf

COVID-19 Admitted Patients

COVID Patients Admitted



Data Source: Self-reported by hospitals as required by Emergency Order 18-20

DAILY COVID-19 HOSPITAL STATISTICAL REPORT

as of: 09/01/2020 11:26

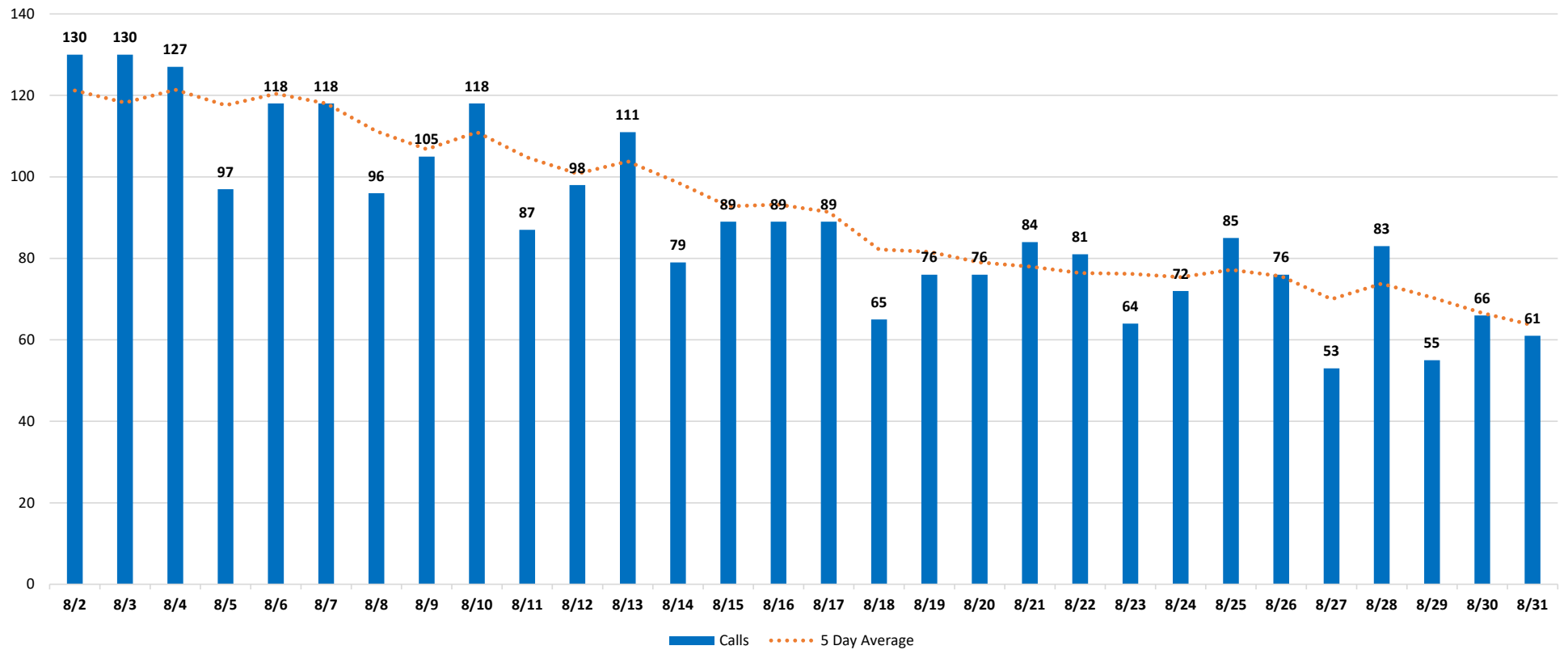
	08/19/2020	08/20/2020	08/21/2020	08/22/2020	08/23/2020	08/24/2020	08/25/2020	08/26/2020	08/27/2020	08/28/2020	08/29/2020	08/30/2020	08/31/2020	09/01/2020
Available Beds														
Acute Care Beds	5,363	5,360	5,360	5,360	5,360	5,363	5,368	5,370	5,367	5,369	5,369	5,369	5,371	5,371
Beds that may be converted to Acute Care Beds	760	759	757	757	757	760	763	757	755	752	752	752	758	763
ICU Beds	1,016	1,016	1,016	1,016	1,007	1,005	1,006	998	999	980	971	980	980	980
Beds that may be converted to ICU Beds	456	455	457	455	455	455	455	456	455	475	475	475	475	475
Ventilators														
Ventilators available for deployment	817	811	822	841	851	848	855	857	877	894	906	913	894	906
Ventilators on standby	119	120	121	123	124	124	117	109	109	115	121	126	127	124
Respirators/Anesthesia Machines that maybe converted to Ventilators	441	439	440	440	441	441	441	440	440	439	440	441	440	435
COVID-19 Cases														
COVID Patients Admitted	1,219	1,136	1,103	1,038	1,019	1,019	964	930	894	865	821	807	800	786
COVID Patients in ICU Beds	334	296	281	278	272	264	260	248	237	221	215	211	209	208
COVID Patients in Non-ICU Beds	885	840	822	760	747	755	704	682	657	644	606	596	591	578
COVID Patients on ventilators	267	237	234	221	218	207	210	204	192	184	175	165	162	162
COVID-19 Patients														
New COVID Patients	82	67	83	65	58	64	62	53	72	57	65	49	61	70
COVID Patients Discharged	155	150	122	115	77	56	114	119	116	88	99	96	47	99

*This data has been collected and compiled based on Emergency Order 18-20, as of the time noted. The information is submitted by the respective facilities and has not been audited.

** As certain data points are clarified, information reported for prior periods may change

Miami-Dade Fire Rescue Calls

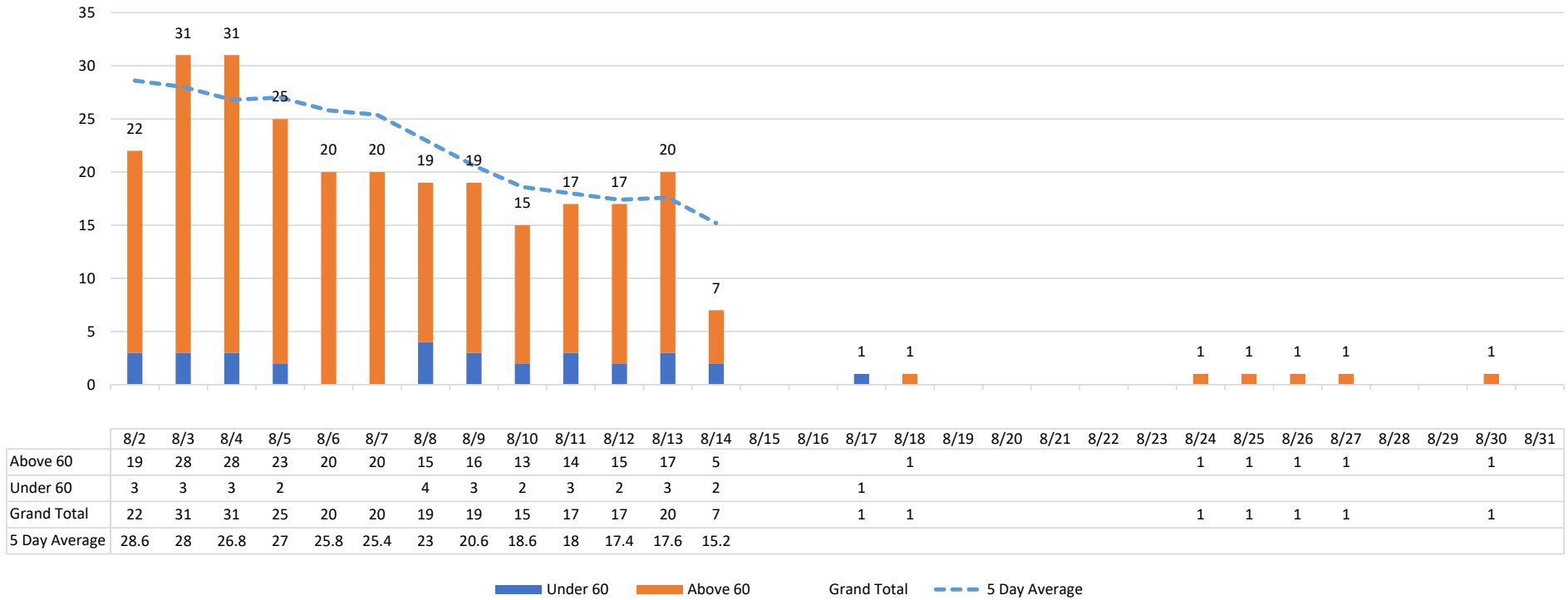
MDFR Suspected COVID-19 Calls



Data Source: Miami-Dade Fire Rescue

Medical Examiner

Deaths by Day



An August 15th decision by the Florida Medical Examiner Commission determined that "treating physicians may certify COVID-19 deaths" so long as certain conditions are met. While this decision will expedite such process, it will result in the County's ME reporting and certifying a lower number of deaths. The administration will work closely with FDOH to ensure that the appropriate figures are reported.

Data Source: Miami-Dade Medical Examiner