

Moving to a New Normal Dashboard

September 16, 2020




Daily Summary

Moving to a New Normal Dashboard Summary

1) Downward trajectory of documented cases within a 14-day period

As of : **09/16/2020**

New Reported Positives: **457**

Trend: 

2) 14 consecutive days where positive test rate is below 10% on average

Daily Positive Rate: 4.52%

14-day Average: 5.35%

Cumulative Positive Rate: 18.90%

Total Positives: 164,038

Total People Tested: 867,883

JHS Positive Rate: 6%

3) 30% Total and ICU Bed Capacity Available*

As of : **09/16/2020**

COVID non-ICU Admissions: 318

Available non-ICU beds: 5,362

COVID ICU Admissions: 145

Available ICU beds: 985

4) Miami-Dade Fire Rescue COVID Calls

Calls for: **09/15/2020**

Suspected COVID-19 Calls: 53

5-day Average: 56

5) Plan in place to monitor and manage hospital capacity and vulnerable

In Progress

6) Lab Turnaround Time Reported by FDOH

Cases Reported on: **09/13/2020**

less than 3 days: 85.11%

4 - 7 days: 13.83%

7 or more days: 1.06%

7) Countywide contact tracing program with a target headcount of 100 tracers by May 31

Complete. As of 7/30, there are 350 contact tracers in place

8) Sector safety guidelines developed and communicated

In Progress

9) Plan in place to open public transit that protects workers and commuters

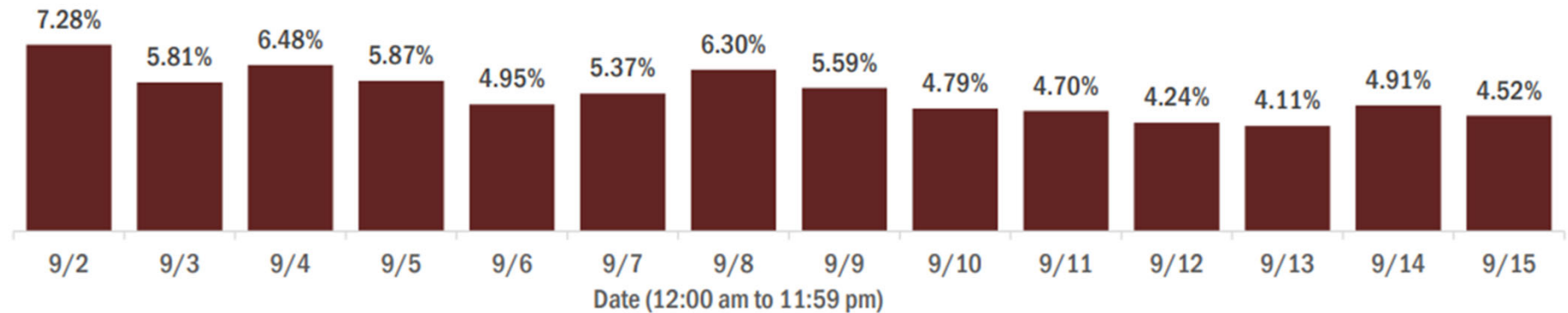
In Progress

** Percentage represents the number of COVID positive patients utilizing hospital beds; does not include the 1,217 acute care and ICU beds that may be converted*

COVID-19 Daily Positive Rate

Percent positivity for new cases in Florida residents

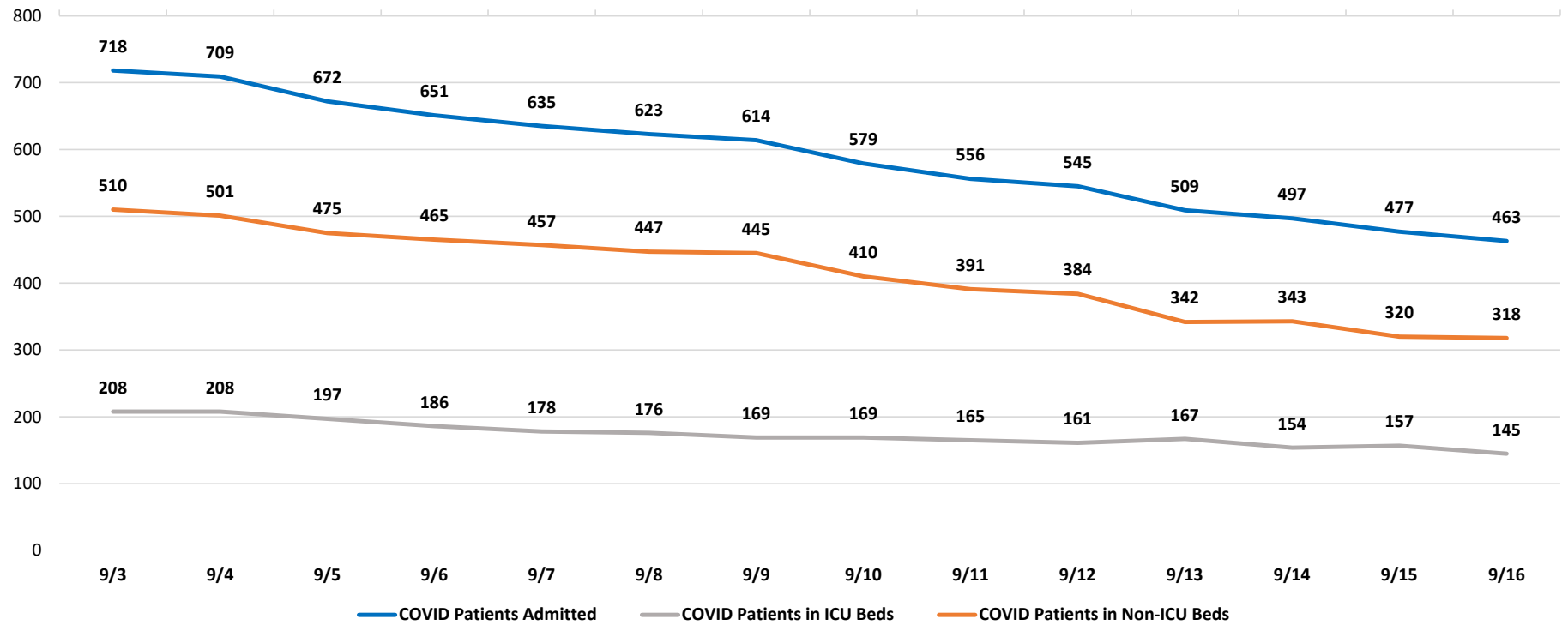
These counts include the number of Florida residents for whom the department received PCR or antigen laboratory results by day. This percent is the number of people who test positive for the first time divided by all the people tested that day, excluding people who have previously tested positive.



14-day average: 5.35%

COVID-19 Admitted Patients

COVID Patients Admitted



Data Source: Self-reported by hospitals as required by Emergency Order 18-20

DAILY COVID-19 HOSPITAL STATISTICAL REPORT

as of: 09/16/2020 11:36

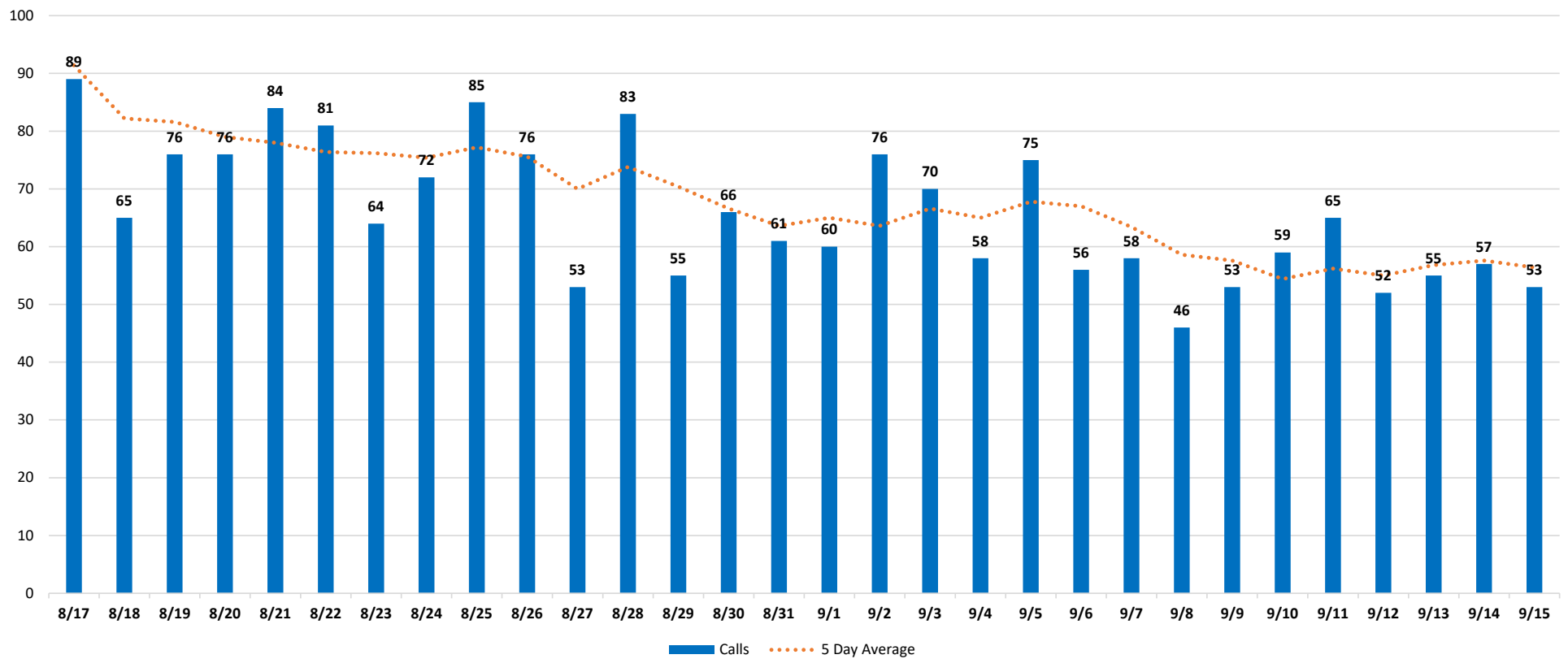
	09/03/2020	09/04/2020	09/05/2020	09/06/2020	09/07/2020	09/08/2020	09/09/2020	09/10/2020	09/11/2020	09/12/2020	09/13/2020	09/14/2020	09/15/2020	09/16/2020
Available Beds														
Acute Care Beds	5,368	5,367	5,368	5,368	5,369	5,362	5,362	5,363	5,364	5,364	5,364	5,365	5,363	5,362
Beds that may be converted to Acute Care Beds	753	750	750	750	752	753	750	745	745	745	745	744	741	741
ICU Beds	990	989	990	990	991	991	991	988	989	997	997	989	988	985
Beds that may be converted to ICU Beds	475	475	475	477	478	476	476	477	478	479	479	479	476	476
Ventilators														
Ventilators available for deployment	898	908	918	925	925	932	913	912	896	905	937	926	910	906
Ventilators on standby	134	128	122	125	117	125	129	136	136	139	143	141	142	148
Respirators/Anesthesia Machines that maybe converted to Ventilators	439	438	439	441	441	441	441	440	440	441	440	440	439	438
COVID-19 Cases														
COVID Patients Admitted	718	709	672	651	635	623	614	579	556	545	509	497	477	463
COVID Patients in ICU Beds	208	208	197	186	178	176	169	169	165	161	167	154	157	145
COVID Patients in Non-ICU Beds	510	501	475	465	457	447	445	410	391	384	342	343	320	318
COVID Patients on ventilators	160	161	154	150	147	135	138	134	134	129	123	125	124	118
COVID-19 Patients														
New COVID Patients	71	78	55	37	46	49	63	57	51	52	33	34	54	60
COVID Patients Discharged	93	87	129	57	55	64	88	94	83	79	57	40	66	70

*This data has been collected and compiled based on Emergency Order 18-20, as of the time noted. The information is submitted by the respective facilities and has not been audited.

** As certain data points are clarified, information reported for prior periods may change

Miami-Dade Fire Rescue Calls

MDFR Suspected COVID-19 Calls

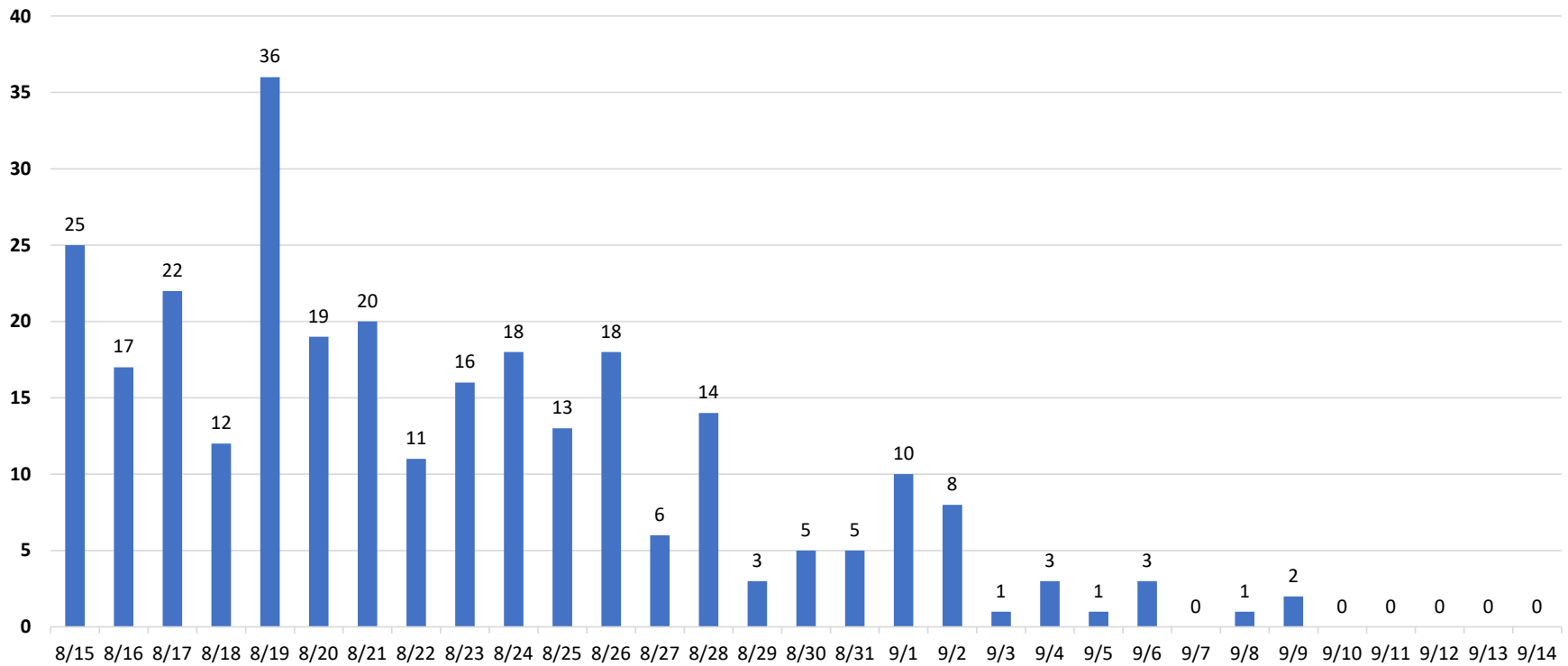


Data Source: Miami-Dade Fire Rescue

Deaths by Day

Florida Department of Health through September 14th

Daily Deaths



An August 15th decision by the Florida Medical Examiner Commission determined that "treating physicians may certify COVID-19 deaths" so long as certain conditions are met. While this decision will expedite such process, it will result in the County's ME reporting and certifying a lower number of deaths. The information shown above is based on figures provided by the Florida Department of Health.

Data Source: Florida Department of Health