

# Moving to a New Normal Dashboard

---

October 13, 2020




# Daily Summary

## Moving to a New Normal Dashboard Summary

### 1) Downward trajectory of documented cases within a 14-day period

As of: **10/13/2020**

New Reported Positives: **484**

Trend: 

### 2) 14 consecutive days where positive test rate is below 10% on average

Daily Positive Rate: 4.51%

14-day Average: 4.72%

Cumulative Positive Rate: 18.14%

Total Positives: 174,641

Total People Tested: 962,560

JHS Positive Rate: 4%

### 3) 30% Total and ICU Bed Capacity Available\*

As of: **10/13/2020**

COVID non-ICU Admissions: 250

Available non-ICU beds: 5,394

COVID ICU Admissions: 97

Available ICU beds: 974

### 4) Miami-Dade Fire Rescue COVID Calls

Calls for: **10/12/2020**

Suspected COVID-19 Calls: 36

5-day Average: 51

### 5) Plan in place to monitor and manage hospital capacity and vulnerable

*In Progress*

### 6) Lab Turnaround Time Reported by FDOH

Cases Reported on: **10/21/2020**

less than 3 days: 68.03%

4-7 days: 31.20%

7 or more days: 0.77%

### 7) Countywide contact tracing program with a target headcount of 100 tracers by May 31

*Complete. As of 7/30, there are 350 contact tracers in place*

### 8) Sector safety guidelines developed and communicated

*In Progress*

### 9) Plan in place to open public transit that protects workers and commuters

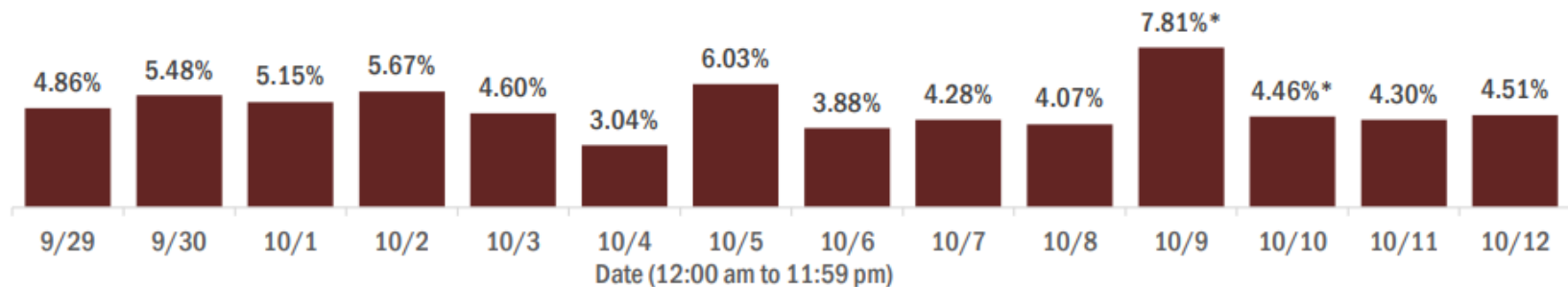
*In Progress*

*\* Percentage represents the number of COVID positive patients utilizing hospital beds; does not include the 1,362 acute care and ICU beds that may be converted*

# COVID-19 Daily Positive Rate

## Percent positivity for new cases in Florida residents

These counts include the number of Florida residents for whom the department received PCR or antigen laboratory results by day. This percent is the number of people who test positive for the first time divided by all the people tested that day, excluding people who have previously tested positive.



\* A data dump of previously reported lab results prevented the reporting system from normal processing of lab results on Oct 9, causing an inaccurate representation of data for Oct 9 and 10. The most accurate way to interpret percent positivity for these 2 days is as a 2-day average, which was 5.08%

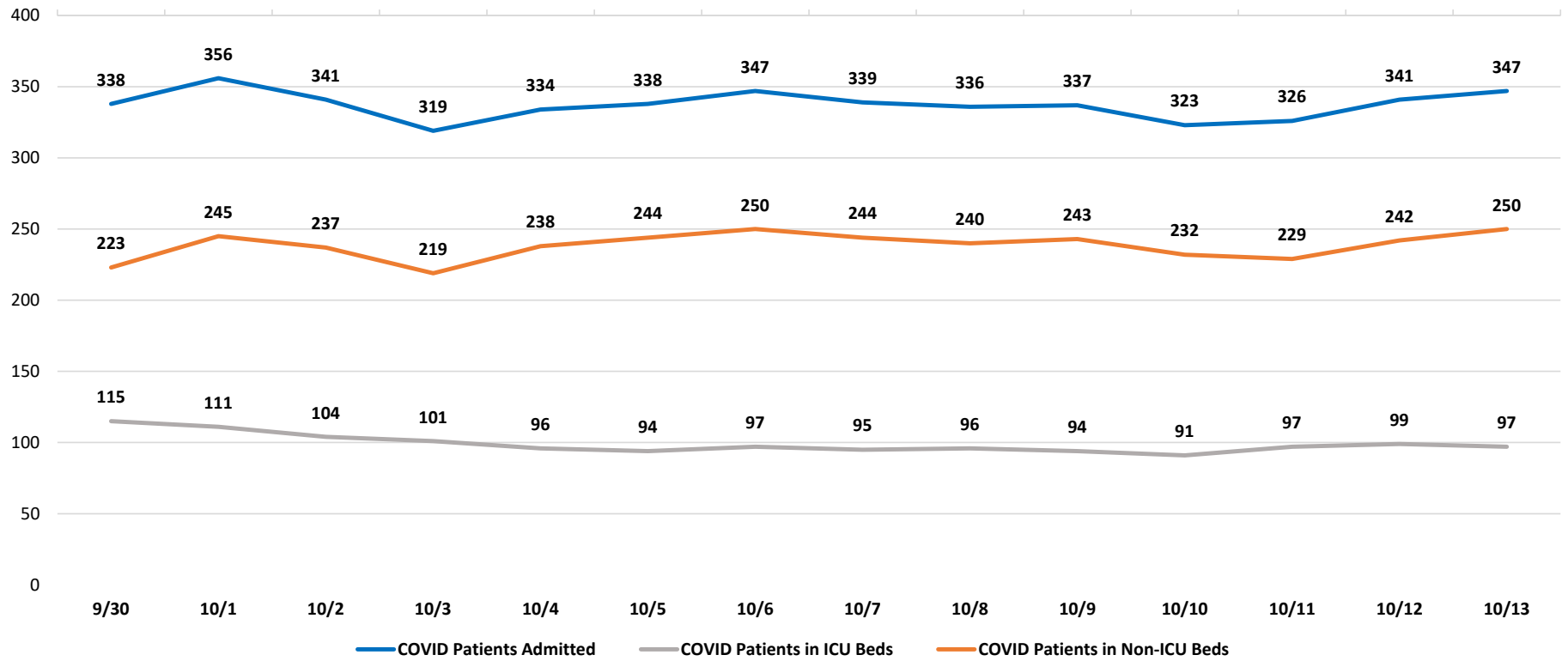
**14-day average: 4.72%**  
**New Reported Cases: 484**

**The 14-day average is calculated by using 5.08% as the percent positive for 10/9 and 10/10**

Data Source: The daily positivity rate as reported by the State of Florida on the "County Report" [http://ww11.doh.state.fl.us/comm/partners/covid19\\_report\\_archive/county\\_reports\\_latest.pdf](http://ww11.doh.state.fl.us/comm/partners/covid19_report_archive/county_reports_latest.pdf)

# COVID-19 Admitted Patients

## COVID Patients Admitted



Data Source: Self-reported by hospitals as required by Emergency Order 18-20

**DAILY COVID-19 HOSPITAL STATISTICAL REPORT**

as of: 10/13/2020 11:11

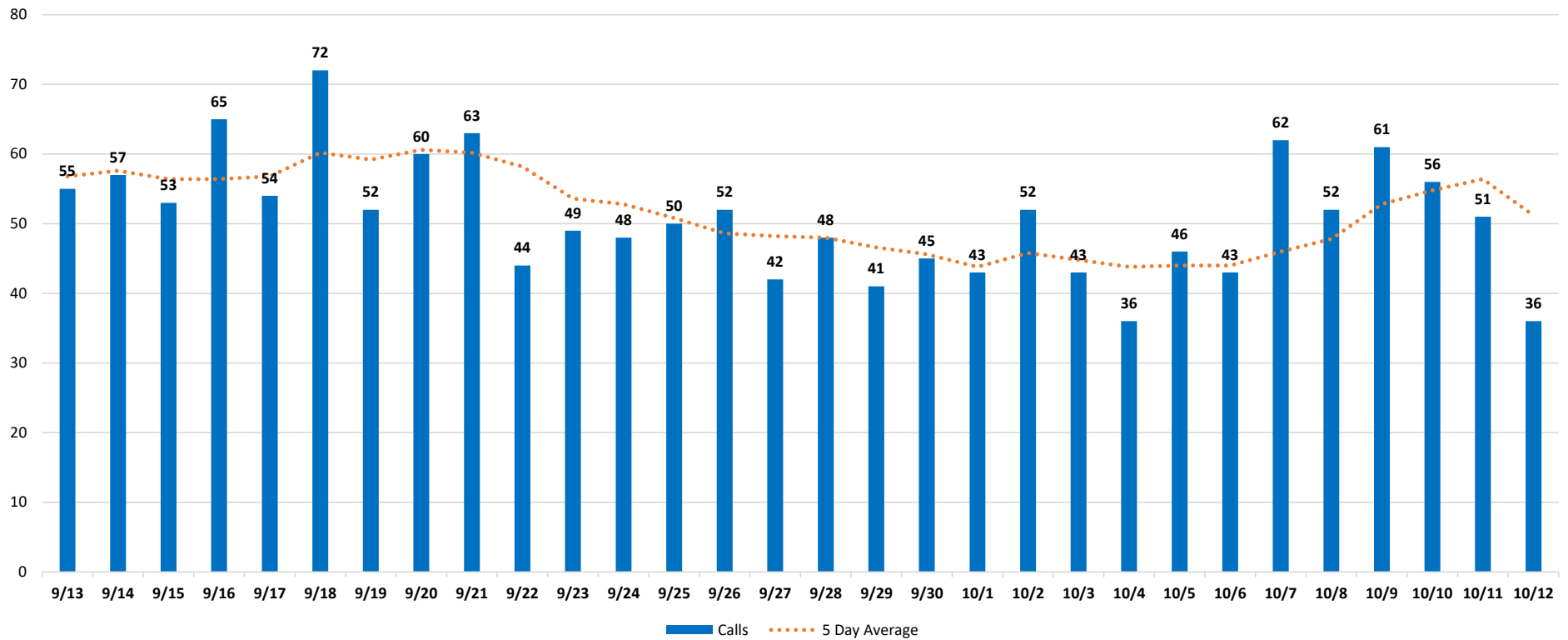
	09/30/2020	10/01/2020	10/02/2020	10/03/2020	10/04/2020	10/05/2020	10/06/2020	10/07/2020	10/08/2020	10/09/2020	10/10/2020	10/11/2020	10/12/2020	10/13/2020
<b>Available Beds</b>														
Acute Care Beds	5,371	5,369	5,376	5,376	5,375	5,373	5,370	5,367	5,370	5,369	5,393	5,377	5,385	5,394
Beds that may be converted to Acute Care Beds	744	764	769	764	764	762	761	759	760	757	732	732	732	734
ICU Beds	975	974	974	974	974	975	975	974	973	973	973	973	973	974
Beds that may be converted to ICU Beds	477	477	479	478	478	478	475	478	479	475	476	477	475	477
<b>Ventilators</b>														
Ventilators available for deployment	929	933	938	937	945	944	941	943	923	950	904	859	885	885
Ventilators on standby	144	143	140	142	151	152	146	147	150	149	131	137	136	143
Respirators/Anesthesia Machines that maybe converted to Ventilators	439	440	440	439	441	438	440	441	441	441	438	440	441	440
<b>COVID-19 Cases</b>														
COVID Patients Admitted	338	356	341	319	334	338	347	339	336	337	323	326	341	347
COVID Patients in ICU Beds	115	111	104	101	96	94	97	95	96	94	91	97	99	97
COVID Patients in Non-ICU Beds	223	245	237	219	238	244	250	244	240	243	232	229	242	250
COVID Patients on ventilators	65	66	63	60	59	62	61	61	62	65	58	61	60	60
<b>COVID-19 Patients</b>														
New COVID Patients	40	55	34	36	37	24	51	48	45	42	34	26	40	49
COVID Patients Discharged	56	51	42	54	31	27	40	54	55	48	50	32	30	54

\*This data has been collected and compiled based on Emergency Order 18-20, as of the time noted. The information is submitted by the respective facilities and has not been audited.

\*\* As certain data points are clarified, information reported for prior periods may change

# Miami-Dade Fire Rescue Calls

## MDFR Suspected COVID-19 Calls

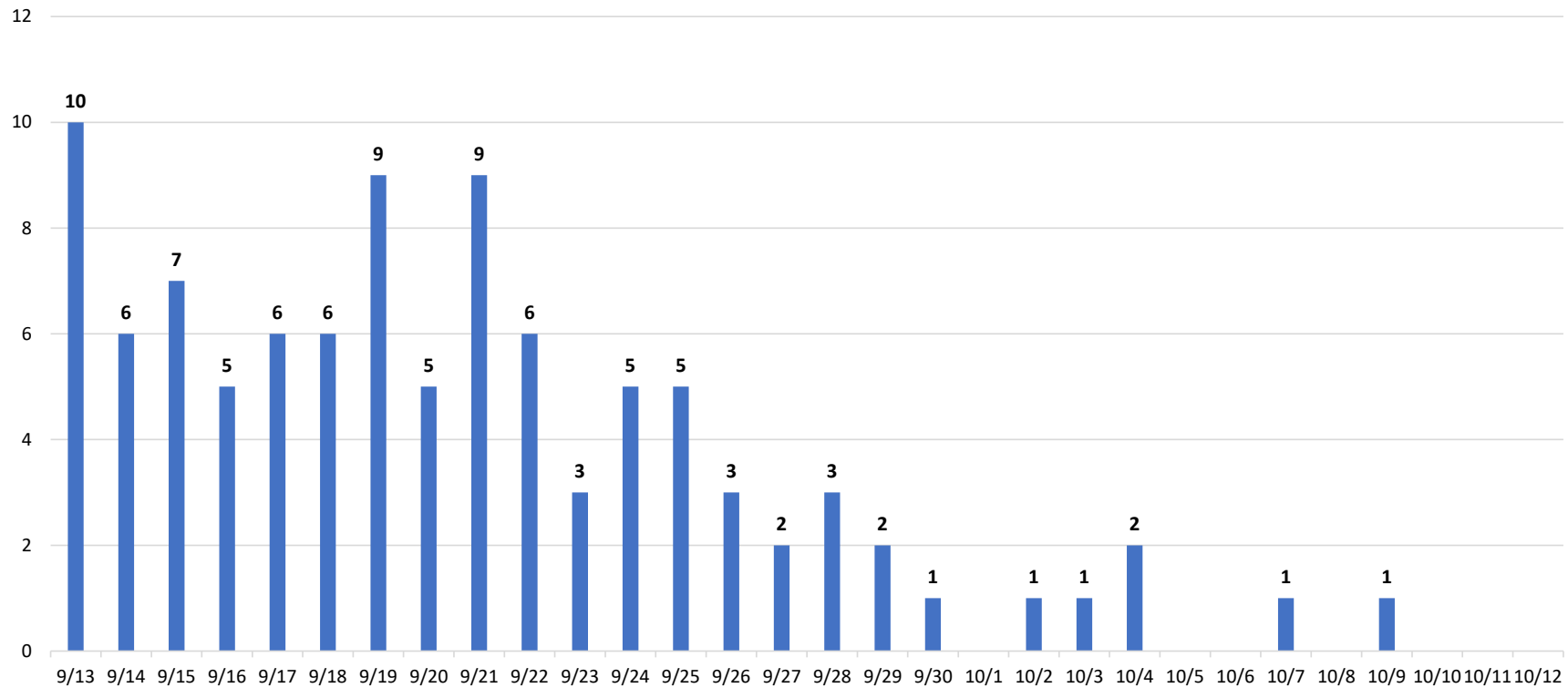


Data Source: Miami-Dade Fire Rescue

# Deaths by Day

Florida Department of Health through October 12<sup>th</sup>

FDOH Deaths by Day



**An August 15th decision by the Florida Medical Examiner Commission determined that "treating physicians may certify COVID-19 deaths" so long as certain conditions are met. While this decision will expedite such process, it will result in the County's ME reporting and certifying a lower number of deaths. The information shown above is based on figures provided by the Florida Department of Health.**

Data Source: Florida Department of Health