

Moving to a New Normal Dashboard

October 14, 2020




Daily Summary

Moving to a New Normal Dashboard Summary

1) Downward trajectory of documented cases within a 14-day period

As of: **10/14/2020**

New Reported Positives: **442**

Trend: 

2) 14 consecutive days where positive test rate is below 10% on average

Daily Positive Rate: 5.08%

14-day Average: 4.73%

Cumulative Positive Rate: 18.13%

Total Positives: 175,069

Total People Tested: 965,865

JHS Positive Rate: 4%

3) 30% Total and ICU Bed Capacity Available*

As of: **10/14/2020**

COVID non-ICU Admissions: 236

Available non-ICU beds: 5,410

COVID ICU Admissions: 96

Available ICU beds: 978

4) Miami-Dade Fire Rescue COVID Calls

Calls for: **10/13/2020**

Suspected COVID-19 Calls: 38

5-day Average: 48

5) Plan in place to monitor and manage hospital capacity and vulnerable

In Progress

6) Lab Turnaround Time Reported by FDOH

Cases Reported on: **10/13/2020**

less than 3 days: 86.28%

4-7 days: 11.59%

7 or more days: 2.13%

7) Countywide contact tracing program with a target headcount of 100 tracers by May 31

Complete. As of 7/30, there are 350 contact tracers in place

8) Sector safety guidelines developed and communicated

In Progress

9) Plan in place to open public transit that protects workers and commuters

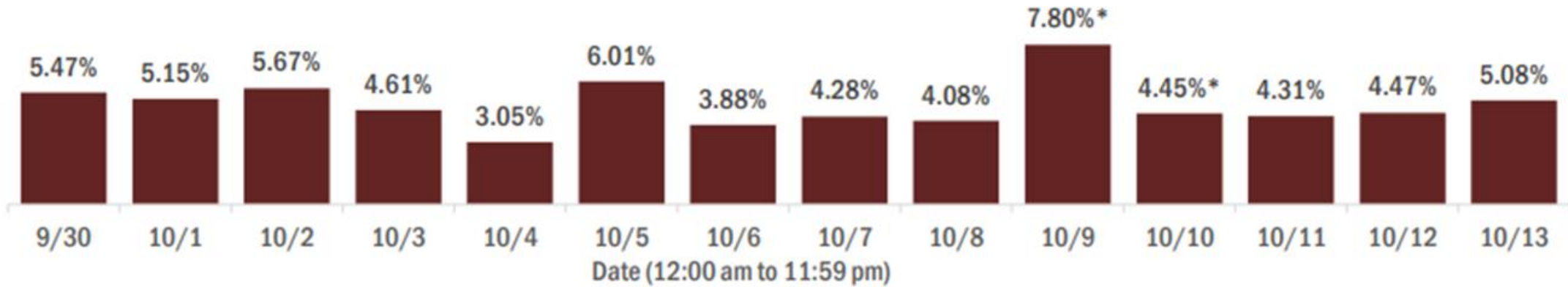
In Progress

** Percentage represents the number of COVID positive patients utilizing hospital beds; does not include the 1,209 acute care and ICU beds that may be converted*

COVID-19 Daily Positive Rate

Percent positivity for new cases in Florida residents

These counts include the number of Florida residents for whom the department received PCR or antigen laboratory results by day. This percent is the number of people who test positive for the first time divided by all the people tested that day, excluding people who have previously tested positive.



* A data dump of previously reported lab results prevented the reporting system from normal processing of lab results on Oct 9, causing an inaccurate representation of data for Oct 9 and 10. The most accurate way to interpret percent positivity for these 2 days is as a 2-day average, which was 5.07%

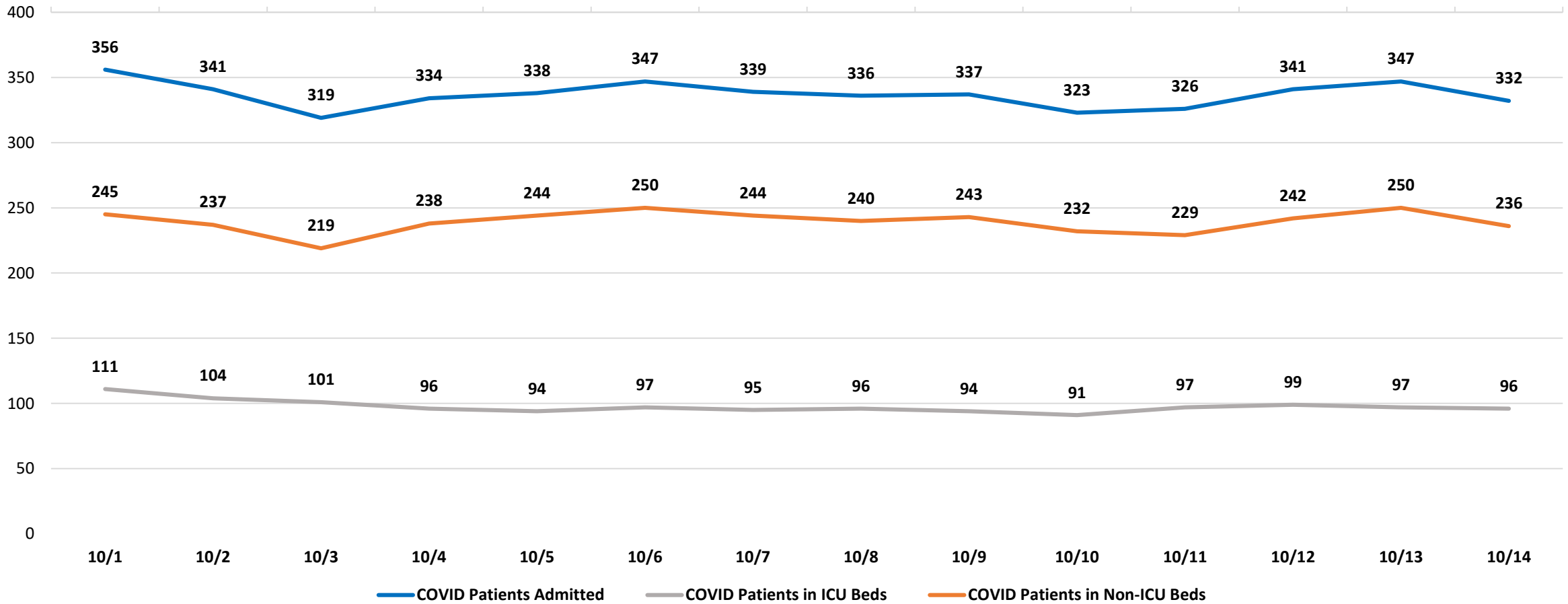
14-day average: 4.73%
New Reported Cases: 442

The 14-day average is calculated by using 5.08% as the percent positive for 10/9 and 10/10

Data Source: The daily positivity rate as reported by the State of Florida on the "County Report" http://ww11.doh.state.fl.us/comm/partners/covid19_report_archive/county_reports_latest.pdf

COVID-19 Admitted Patients

COVID Patients Admitted



DAILY COVID-19 HOSPITAL STATISTICAL REPORT

as of: 10/14/2020 12:10

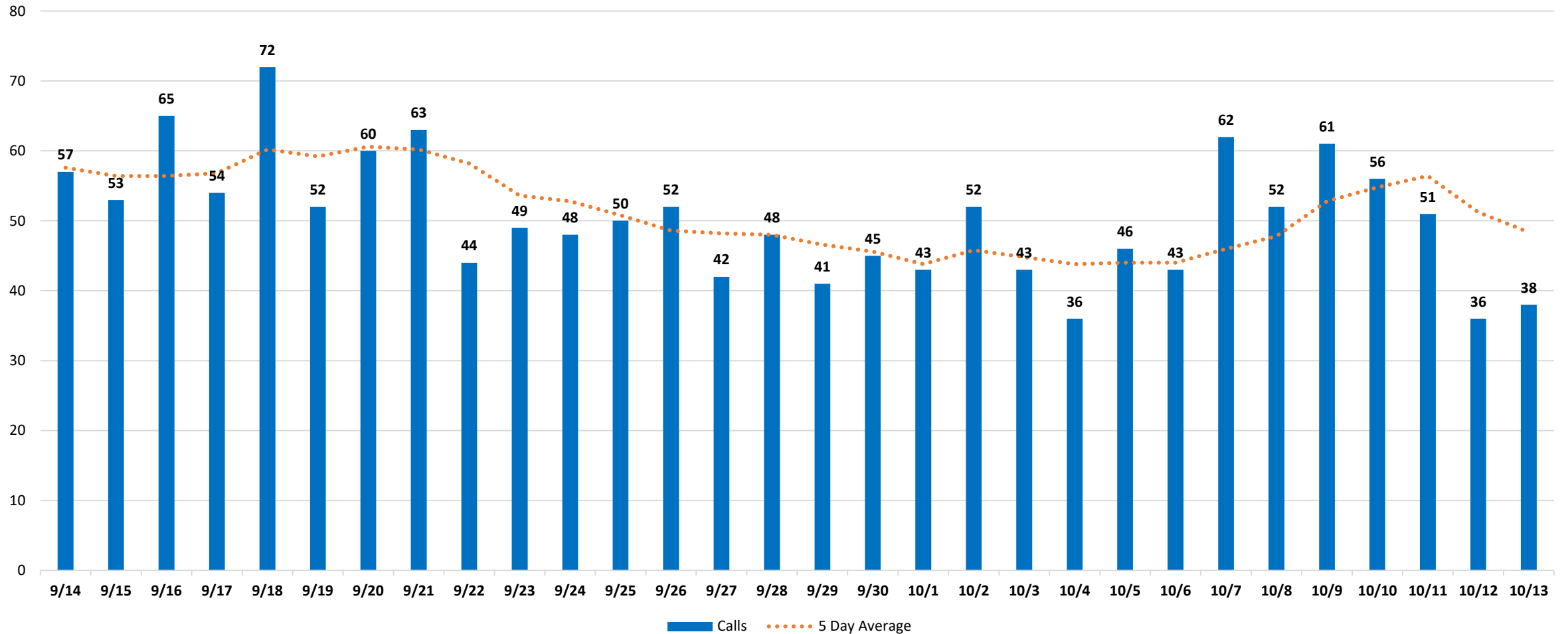
	10/1/2020	10/2/2020	10/3/2020	10/4/2020	10/5/2020	10/6/2020	10/7/2020	10/8/2020	10/9/2020	10/10/2020	10/11/2020	10/12/2020	10/13/2020	10/14/2020
Available Beds														
Acute Care Beds	5,369	5,376	5,376	5,375	5,373	5,370	5,367	5,370	5,369	5,393	5,377	5,385	5,394	5,410
Beds that may be converted to Acute Care Beds	764	769	764	764	762	761	759	760	757	732	732	732	734	731
ICU Beds	974	974	974	974	975	975	974	973	973	973	973	973	974	978
Beds that may be converted to ICU Beds	477	479	478	478	478	475	478	479	475	476	477	475	477	478
Ventilators														
Ventilators available for deployment	933	938	937	945	944	941	943	923	950	904	859	885	885	873
Ventilators on standby	143	140	142	151	152	146	147	150	149	131	137	136	143	146
Respirators/Anesthesia Machines that maybe converted to Ventilators	440	440	439	441	438	440	441	441	441	438	440	441	440	440
COVID-19 Cases														
COVID Patients Admitted	356	341	319	334	338	347	339	336	337	323	326	341	347	332
COVID Patients in ICU Beds	111	104	101	96	94	97	95	96	94	91	97	99	97	96
COVID Patients in Non-ICU Beds	245	237	219	238	244	250	244	240	243	232	229	242	250	236
COVID Patients on ventilators	66	63	60	59	62	61	61	62	65	58	61	60	60	56
COVID-19 Patients														
New COVID Patients	55	34	36	37	24	51	48	45	42	34	26	40	49	36
COVID Patients Discharged	51	42	54	31	27	40	54	55	48	50	32	30	54	60

*This data has been collected and compiled based on Emergency Order 18-20, as of the time noted. The information is submitted by the respective facilities and has not been audited.

** As certain data points are clarified, information reported for prior periods may change

Miami-Dade Fire Rescue Calls

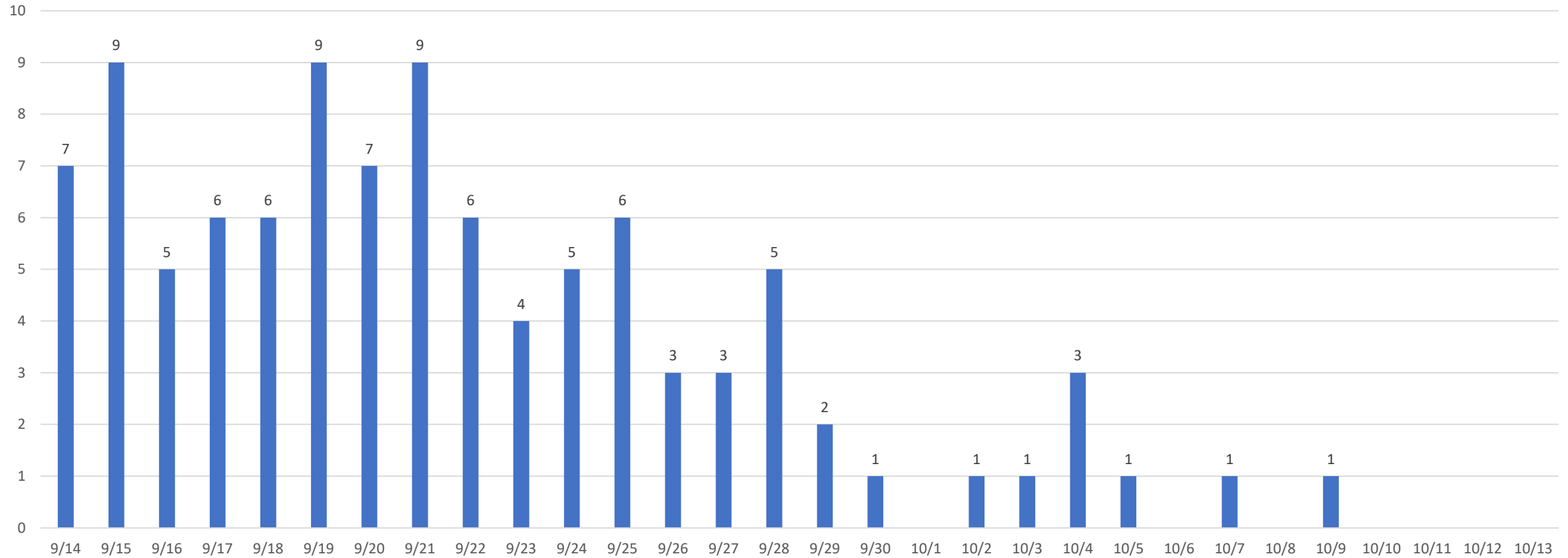
MDFR Suspected COVID-19 Calls



Deaths by Day

Florida Department of Health through October 13th

FDOH Deaths by Day



An August 15th decision by the Florida Medical Examiner Commission determined that "treating physicians may certify COVID-19 deaths" so long as certain conditions are met. While this decision will expedite such process, it will result in the County's ME reporting and certifying a lower number of deaths. The information shown above is based on figures provided by the Florida Department of Health.

Data Source: Florida Department of Health