

Moving to a New Normal Dashboard

November 12, 2020




Daily Summary

Moving to a New Normal Dashboard Summary

1) Downward trajectory of documented cases within a 14-day period

As of: **11/12/2020**

New Reported Positives: **1,199**

Trend: 

2) 14 consecutive days where positive test rate is below 10% on average

Daily Positive Rate: 9.25%

14-day Average: 6.81%

JHS Positive Rate: 4%

3) 30% Total and ICU Bed Capacity Available*

As of: **11/12/2020**

COVID non-ICU Admissions: 417

Available non-ICU beds: 5,410

COVID ICU Admissions: 112

Available ICU beds: 976

4) Miami-Dade Fire Rescue COVID Calls

Calls for: **11/11/2020**

Suspected COVID-19 Calls: 55

5-day Average: 55

5) Plan in place to monitor and manage hospital capacity and vulnerable

In Progress

6) Lab Turnaround Time Reported by FDOH

Cases Reported on: **11/11/2020**

less than 3 days: 89.92%

4 to 7 days: 9.57%

7 or more days: 0.51%

7) Countywide contact tracing program with a target headcount of 100 tracers by May 31

Complete. As of 7/30, there are 350 contact tracers in place

8) Sector safety guidelines developed and communicated

In Progress

9) Plan in place to open public transit that protects workers and commuters

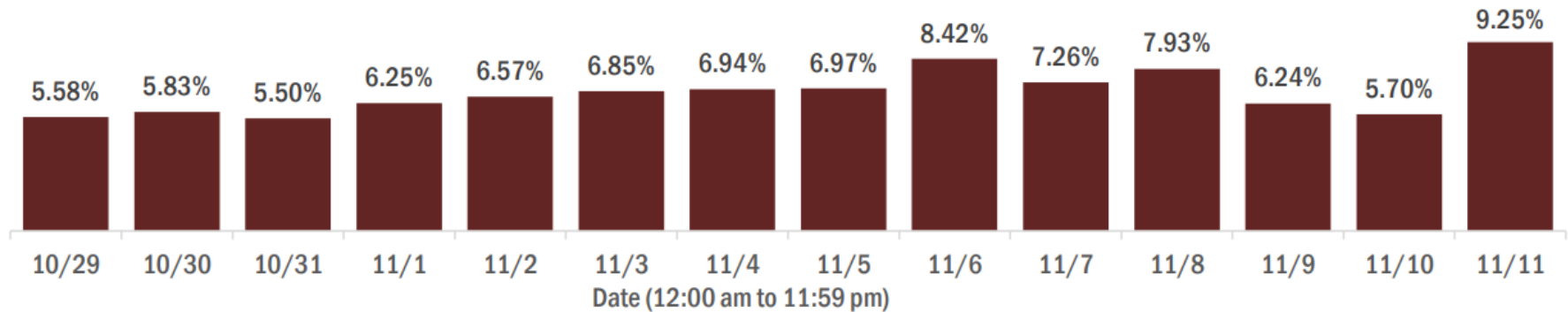
In Progress

* Percentage represents the number of COVID positive patients utilizing hospital beds; does not include the 1,226 acute care and ICU beds that may be converted

COVID-19 Daily Positive Rate

Percent positivity for new cases in Florida residents

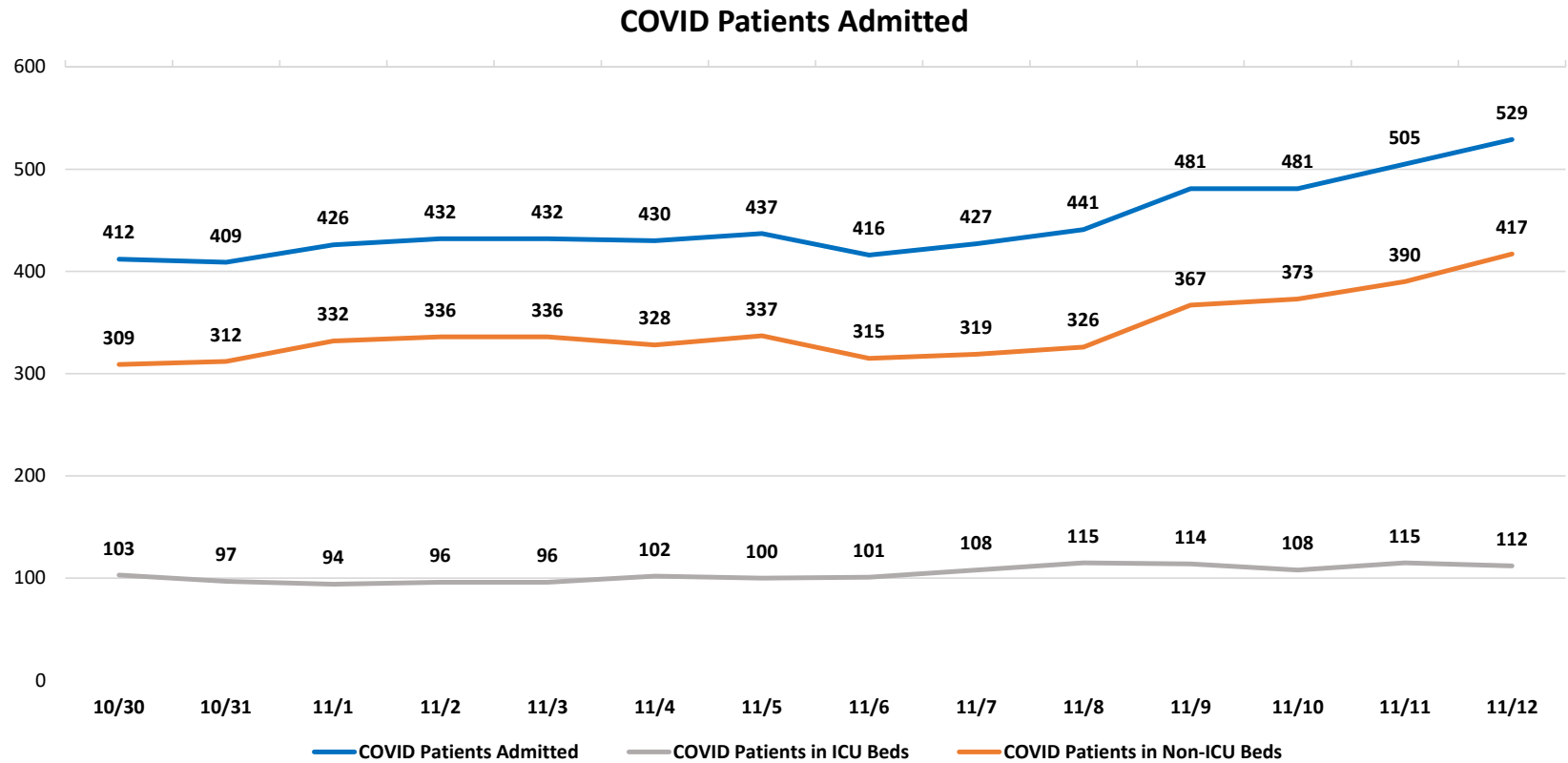
These counts include the number of Florida residents for whom the department received PCR or antigen laboratory results by day. This percent is the number of people who test positive for the first time divided by all the people tested that day, excluding people who have previously tested positive.



14-day average: 6.81%
New Reported Cases: 1,199

Data Source: The daily positivity rate as reported by the State of Florida on the "County Report" http://ww11.doh.state.fl.us/comm/partners/covid19_report_archive/county_reports_latest.pdf

COVID-19 Admitted Patients



Data Source: Self-reported by hospitals as required by Emergency Order 18-20

DAILY COVID-19 HOSPITAL STATISTICAL REPORT

as of: 11/12/2020 11:31

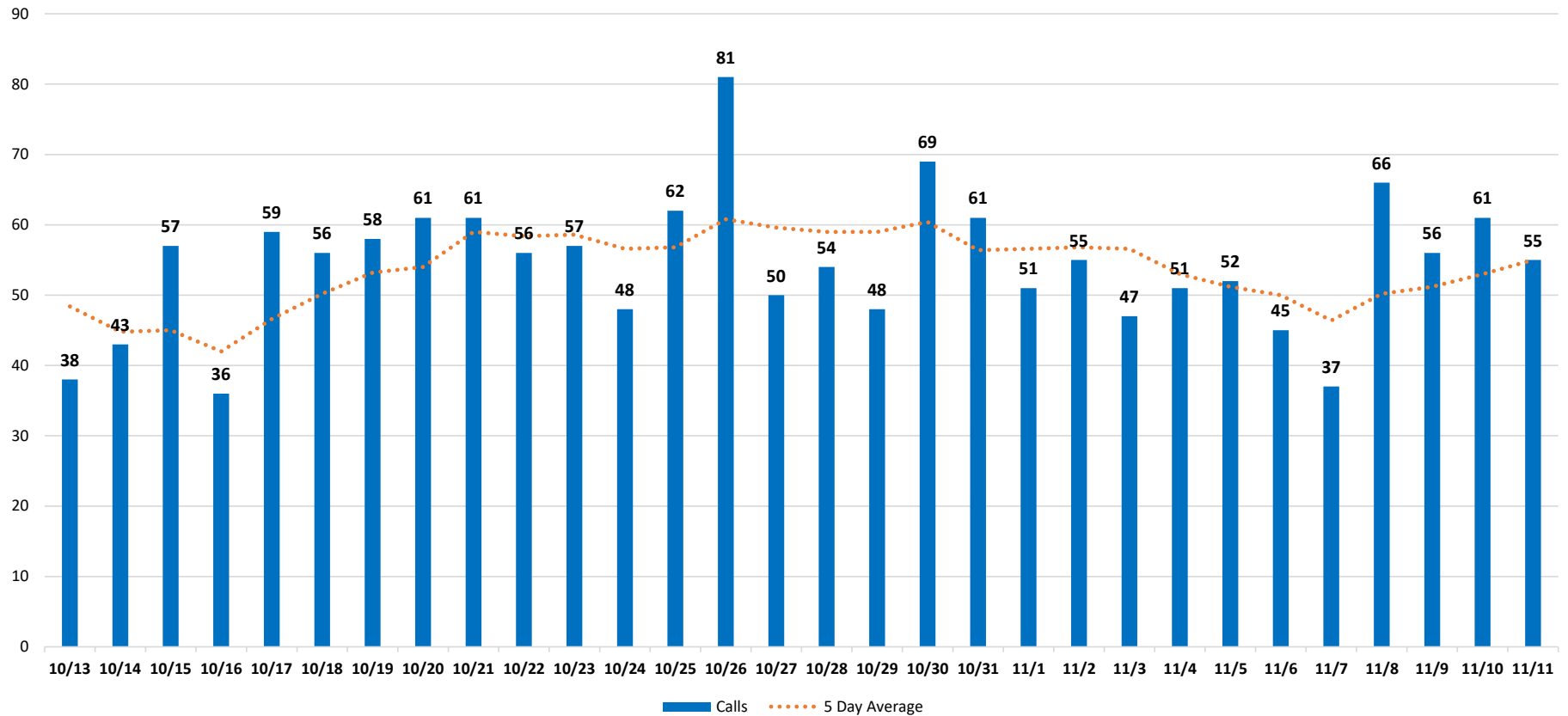
Available Beds	10/30/2020	10/31/2020	11/01/2020	11/02/2020	11/03/2020	11/04/2020	11/05/2020	11/06/2020	11/07/2020	11/08/2020	11/09/2020	11/10/2020	11/11/2020	11/12/2020
Acute Care Beds	5,406	5,403	5,375	5,380	5,403	5,410	5,411	5,424	5,404	5,370	5,367	5,390	5,398	5,410
Beds that may be converted to Acute Care Beds	751	751	751	759	760	756	757	753	753	753	750	747	745	743
ICU Beds	974	975	975	974	973	973	974	974	974	974	975	976	975	976
Beds that may be converted to ICU Beds	479	477	477	481	478	478	476	474	480	479	478	477	478	483
Ventilators														
Ventilators available for deployment	858	855	854	849	843	838	831	829	840	844	866	853	837	847
Ventilators on standby	135	135	139	140	138	139	140	142	135	139	139	132	132	129
Respirators/Anesthesia Machines that may be converted to Ventilators	439	441	441	440	441	441	441	441	441	441	440	440	440	441
COVID-19 Cases														
COVID Patients Admitted	412	409	426	432	432	430	437	416	427	441	481	481	505	529
COVID Patients in ICU Beds	103	97	94	96	96	102	100	101	108	115	114	108	115	112
COVID Patients in Non-ICU Beds	309	312	332	336	336	328	337	315	319	326	367	373	390	417
COVID Patients on ventilators	59	51	54	59	62	59	66	64	65	64	64	64	65	62
COVID-19 Patients														
New COVID Patients	52	50	43	40	35	71	66	45	69	53	55	52	72	71
COVID Patients Discharged	65	61	40	34	57	60	55	75	62	38	31	65	74	43

*This data has been collected and compiled based on Emergency Order 18-20, as of the time noted. The information is submitted by the respective facilities and has not been audited.

** As certain data points are clarified, information reported for prior periods may change

Miami-Dade Fire Rescue Calls

MDFR Suspected COVID-19 Calls

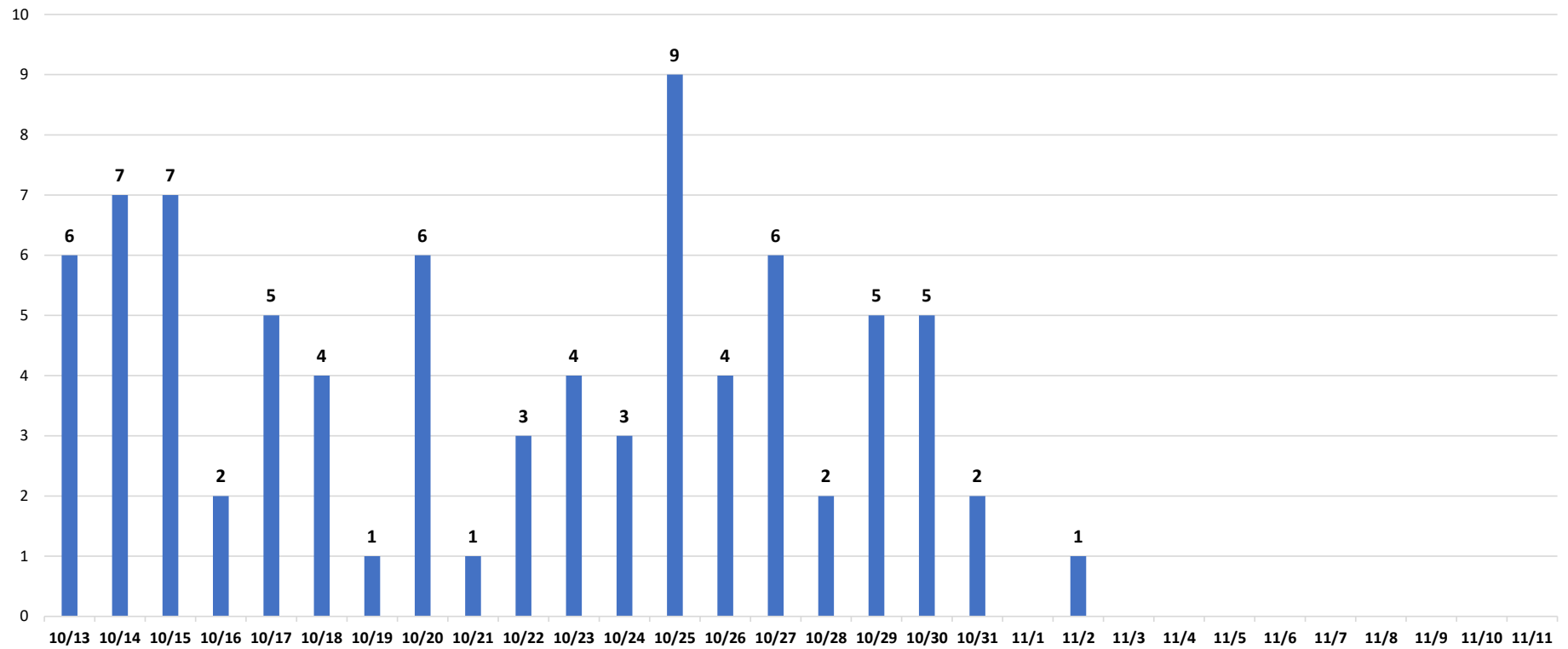


Data Source: Miami-Dade Fire Rescue

Deaths by Day

Florida Department of Health through November 11th

FDOH Deaths by Day



Data Source: Florida Department of Health