

# Moving to a New Normal Dashboard

---

November 13, 2020




# Daily Summary

## Moving to a New Normal Dashboard Summary

### 1) Downward trajectory of documented cases within a 14-day period

As of : **11/13/2020**

New Reported Positives: **1,843**

Trend: 

### 2) 14 consecutive days where positive test rate is below 10% on average

Daily Positive Rate: 9.16%

14-day Average: 7.08%

JHS Positive Rate: 10%

### 3) 30% Total and ICU Bed Capacity Available\*

As of : **11/13/2020**

COVID non-ICU Admissions: 417

Available non-ICU beds: 5,407

COVID ICU Admissions: 112

Available ICU beds: 976

### 4) Miami-Dade Fire Rescue COVID Calls

Calls for: **11/12/2020**

Suspected COVID-19 Calls: 47

5-day Average: 57

### 5) Plan in place to monitor and manage hospital capacity and vulnerable

*In Progress*

### 6) Lab Turnaround Time Reported by FDOH

Cases Reported on: **11/11/2020**

less than 3 days: 89.92%

4 to 7 days: 9.57%

7 or more days: 0.51%

### 7) Countywide contact tracing program with a target headcount of 100 tracers by May 31

*Complete. As of 7/30, there are 350 contact tracers in place*

### 8) Sector safety guidelines developed and communicated

*In Progress*

### 9) Plan in place to open public transit that protects workers and commuters

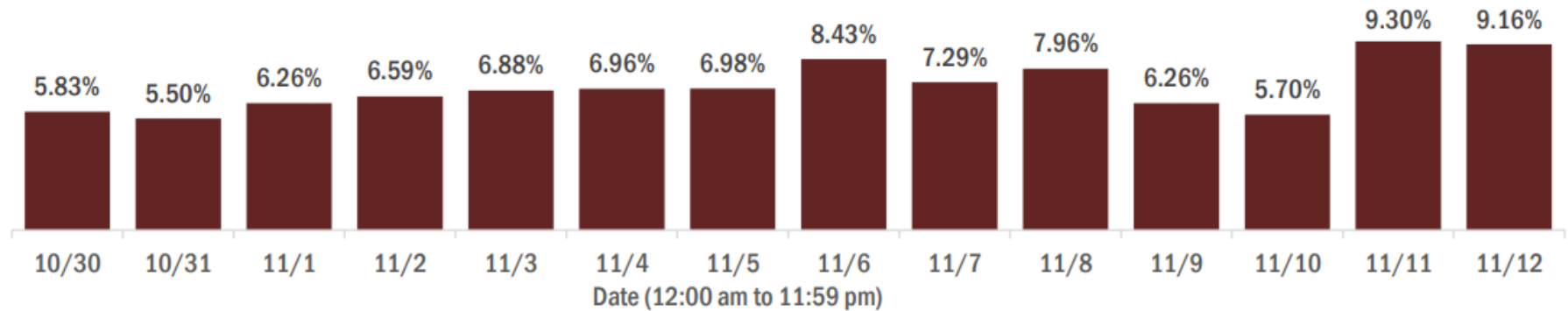
*In Progress*

\* Percentage represents the number of COVID positive patients utilizing hospital beds; does not include the 1,225 acute care and ICU beds that may be converted

# COVID-19 Daily Positive Rate

## Percent positivity for new cases in Florida residents

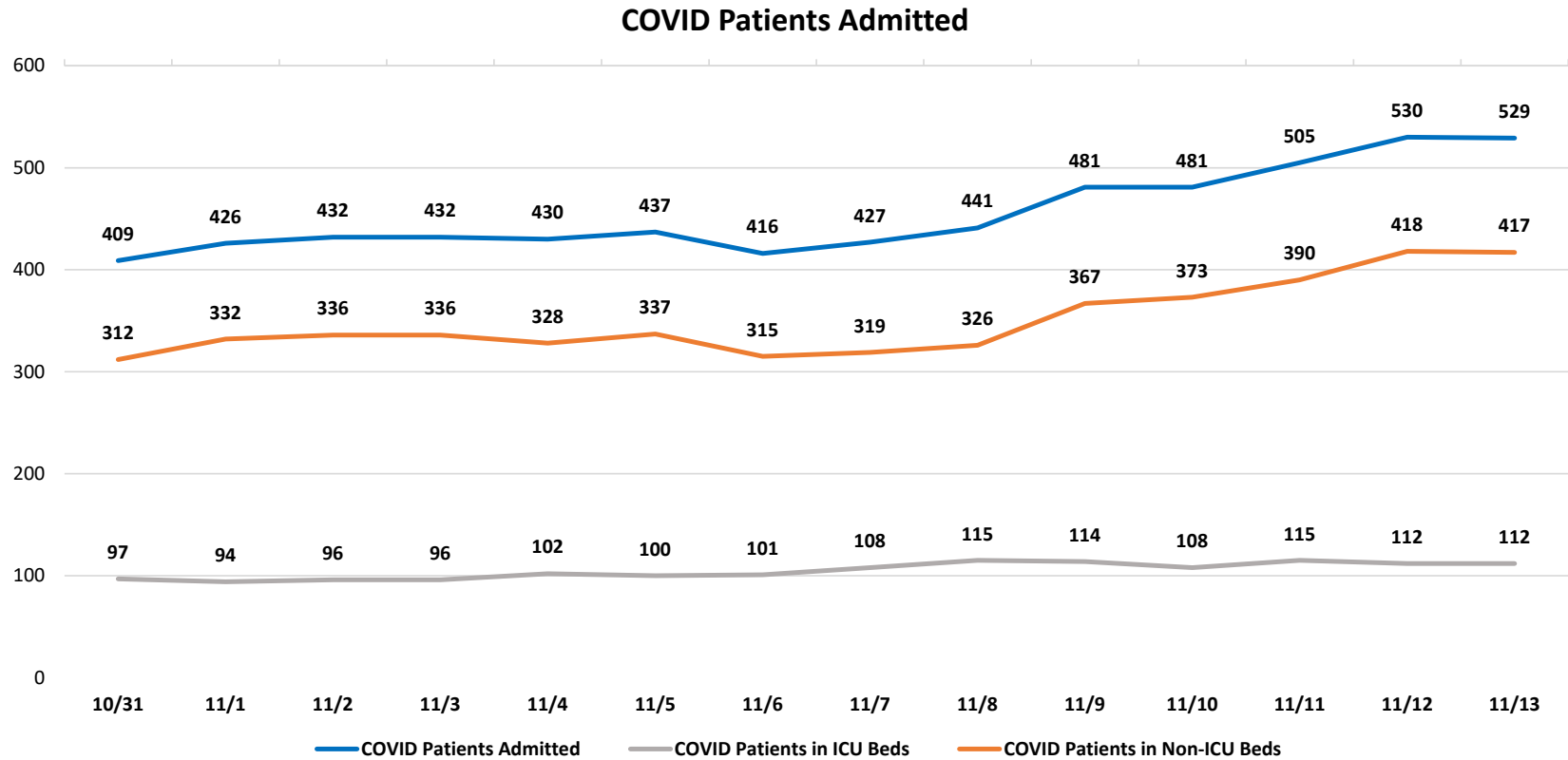
These counts include the number of Florida residents for whom the department received PCR or antigen laboratory results by day. This percent is the number of people who test positive for the first time divided by all the people tested that day, excluding people who have previously tested positive.



**14-day average: 7.08%**  
**New Reported Cases: 1,843**

Data Source: The daily positivity rate as reported by the State of Florida on the "County Report" [http://ww11.doh.state.fl.us/comm/partners/covid19\\_report\\_archive/county\\_reports\\_latest.pdf](http://ww11.doh.state.fl.us/comm/partners/covid19_report_archive/county_reports_latest.pdf)

# COVID-19 Admitted Patients



Data Source: Self-reported by hospitals as required by Emergency Order 18-20

**DAILY COVID-19 HOSPITAL STATISTICAL REPORT**

as of: 11/13/2020 14:19

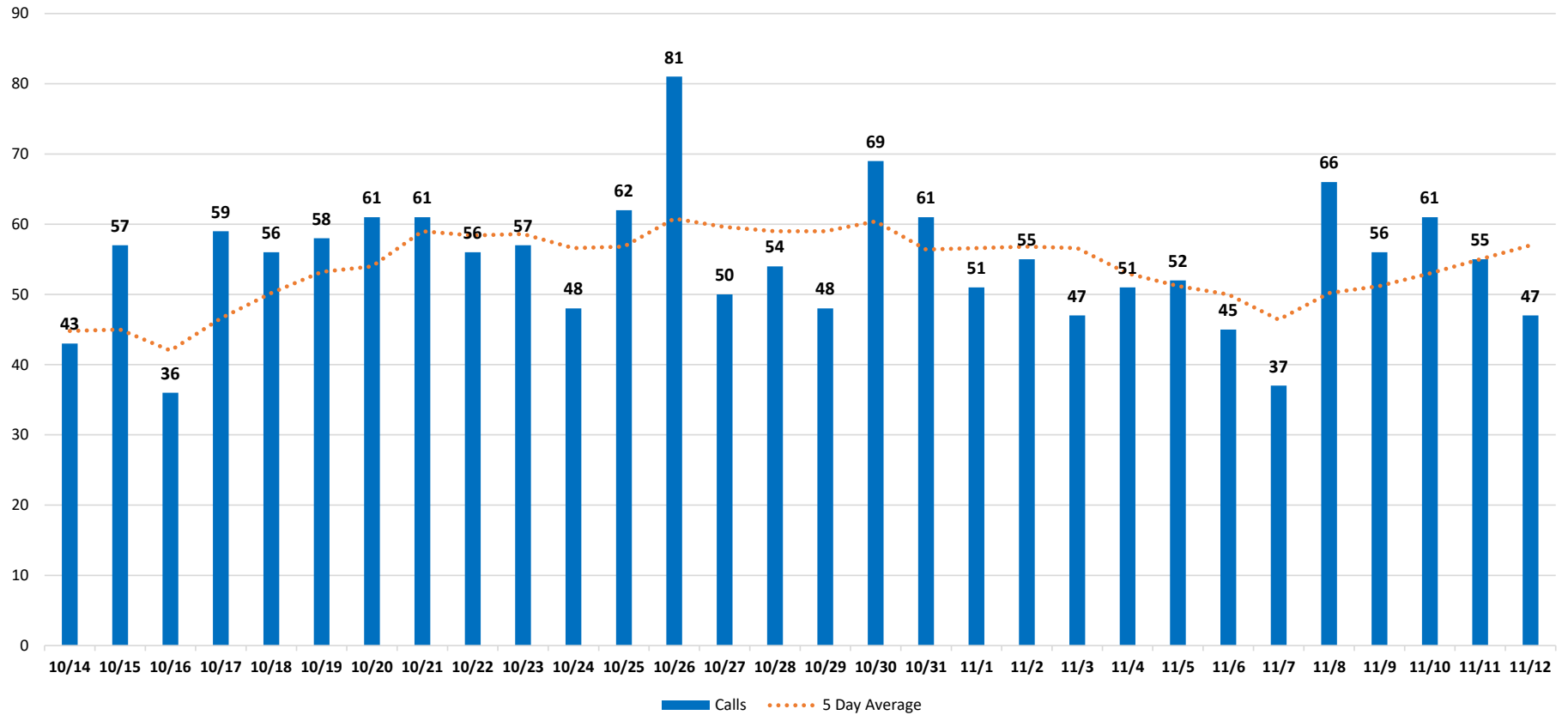
<b>Available Beds</b>	<b>10/31/2020</b>	<b>11/01/2020</b>	<b>11/02/2020</b>	<b>11/03/2020</b>	<b>11/04/2020</b>	<b>11/05/2020</b>	<b>11/06/2020</b>	<b>11/07/2020</b>	<b>11/08/2020</b>	<b>11/09/2020</b>	<b>11/10/2020</b>	<b>11/11/2020</b>	<b>11/12/2020</b>	<b>11/13/2020</b>
Acute Care Beds	5,403	5,375	5,380	5,403	5,410	5,411	5,424	5,404	5,370	5,367	5,390	5,398	5,410	5,407
Beds that may be converted to Acute Care Beds	751	751	759	760	756	757	753	753	753	750	747	745	743	744
ICU Beds	975	975	974	973	973	974	974	974	974	975	976	975	976	976
Beds that may be converted to ICU Beds	477	477	481	478	478	476	474	480	479	478	477	478	483	481
<b>Ventilators</b>														
Ventilators available for deployment	855	854	849	843	838	831	829	840	844	866	853	837	847	862
Ventilators on standby	135	139	140	138	139	140	142	135	139	139	132	132	129	121
Respirators/Anesthesia Machines that maybe converted to Ventilators	441	441	440	441	441	441	441	441	441	440	440	440	441	420
<b>COVID-19 Cases</b>														
COVID Patients Admitted	409	426	432	432	430	437	416	427	441	481	481	505	530	529
COVID Patients in ICU Beds	97	94	96	96	102	100	101	108	115	114	108	115	112	112
COVID Patients in Non-ICU Beds	312	332	336	336	328	337	315	319	326	367	373	390	418	417
COVID Patients on ventilators	51	54	59	62	59	66	64	65	64	64	64	65	62	59
<b>COVID-19 Patients</b>														
New COVID Patients	50	43	40	35	71	66	45	69	53	55	52	72	71	70
COVID Patients Discharged	61	40	34	57	60	55	75	62	38	31	65	74	43	88

\*This data has been collected and compiled based on Emergency Order 18-20, as of the time noted. The information is submitted by the respective facilities and has not been audited.

\*\* As certain data points are clarified, information reported for prior periods may change

# Miami-Dade Fire Rescue Calls

## MDFR Suspected COVID-19 Calls

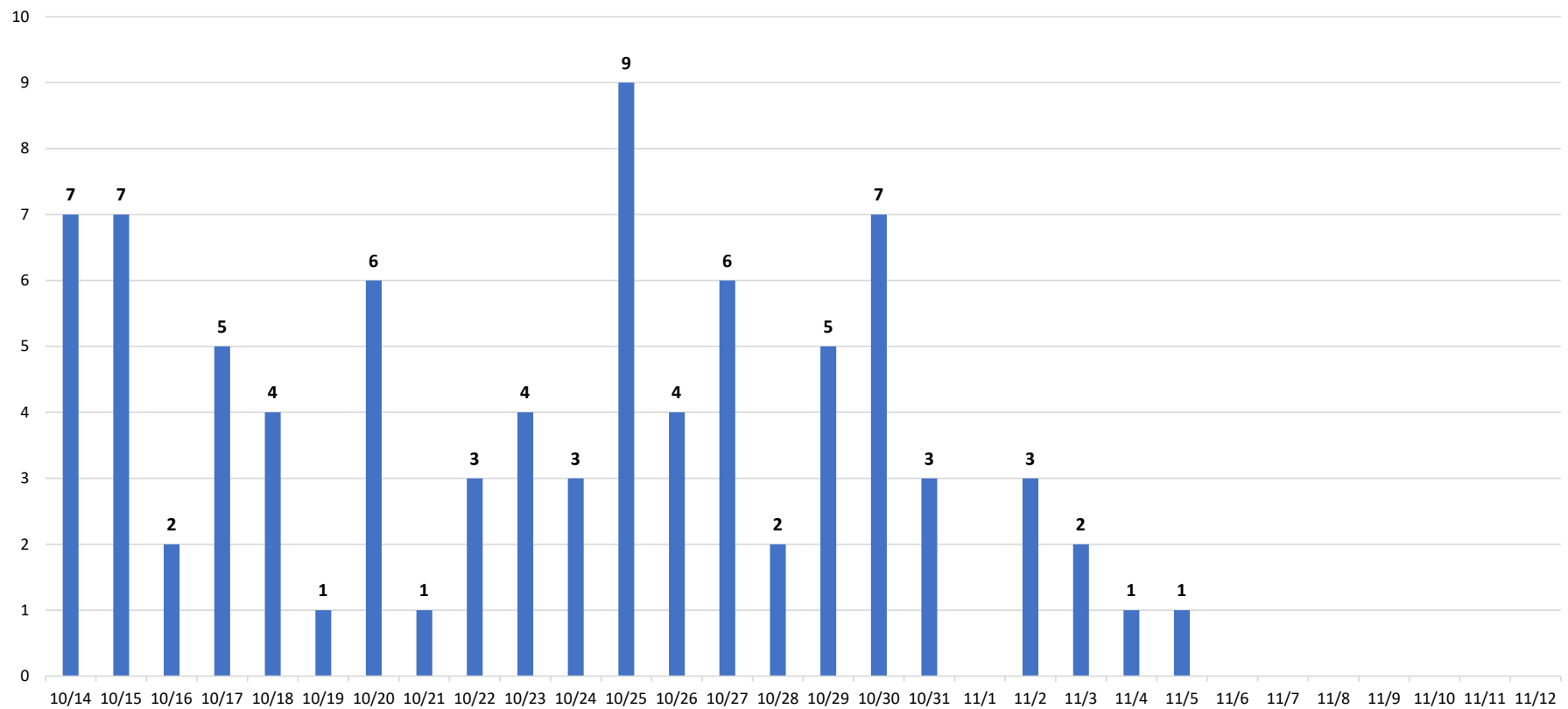


Data Source: Miami-Dade Fire Rescue

# Deaths by Day

Florida Department of Health through November 12<sup>th</sup>

FDOH Deaths by Day



Data Source: Florida Department of Health