

# Moving to a New Normal Dashboard

---

November 17, 2020




# Daily Summary

## Moving to a New Normal Dashboard Summary

**1) Downward trajectory of documented cases within a 14-day period**

As of : **11/17/2020**

New Reported Positives: **1,856**

Trend: 

**2) 14 consecutive days where positive test rate is below 10% on average**

Daily Positive Rate: 8.96%

14-day Average: 7.88%

JHS Positive Rate: 7%

**3) 30% Total and ICU Bed Capacity Available\***

As of : **11/17/2020**

COVID non-ICU Admissions: 462

Available non-ICU beds: 5,432

COVID ICU Admissions: 119

Available ICU beds: 975

**4) Miami-Dade Fire Rescue COVID Calls**

Calls for: **11/16/2020**

Suspected COVID-19 Calls: 66

5-day Average: 64

**5) Plan in place to monitor and manage hospital capacity and vulnerable**

*In Progress*

**6) Lab Turnaround Time Reported by FDOH**

Cases Reported on: **11/16/2020**

less than 3 days: 79.35%

4 to 7 days: 18.54%

7 or more days: 2.11%

**7) Countywide contact tracing program with a target headcount of 100 tracers by May 31**

*Complete. As of 7/30, there are 350 contact tracers in place*

**8) Sector safety guidelines developed and communicated**

*In Progress*

**9) Plan in place to open public transit that protects workers and commuters**

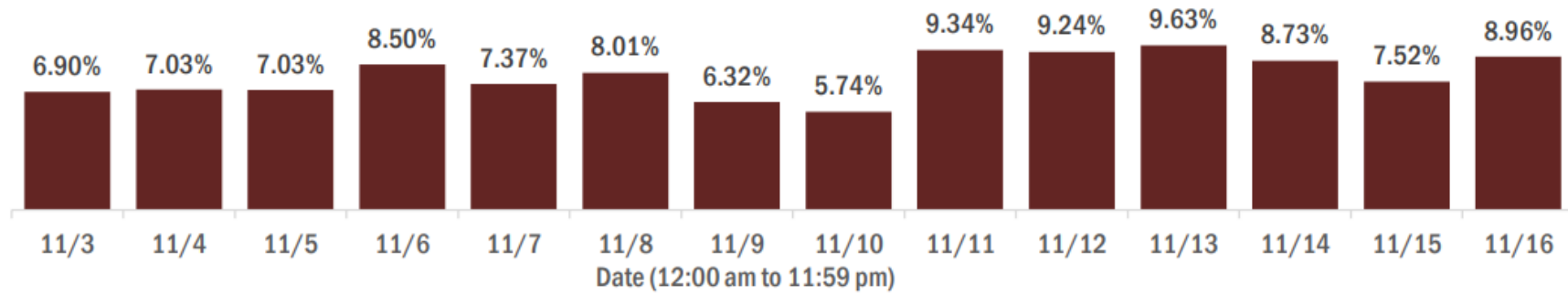
*In Progress*

\* Percentage represents the number of COVID positive patients utilizing hospital beds; does not include the 1,226 acute care and ICU beds that may be converted

# COVID-19 Daily Positive Rate

## Percent positivity for new cases in Florida residents

These counts include the number of Florida residents for whom the department received PCR or antigen laboratory results by day. This percent is the number of people who test positive for the first time divided by all the people tested that day, excluding people who have previously tested positive.

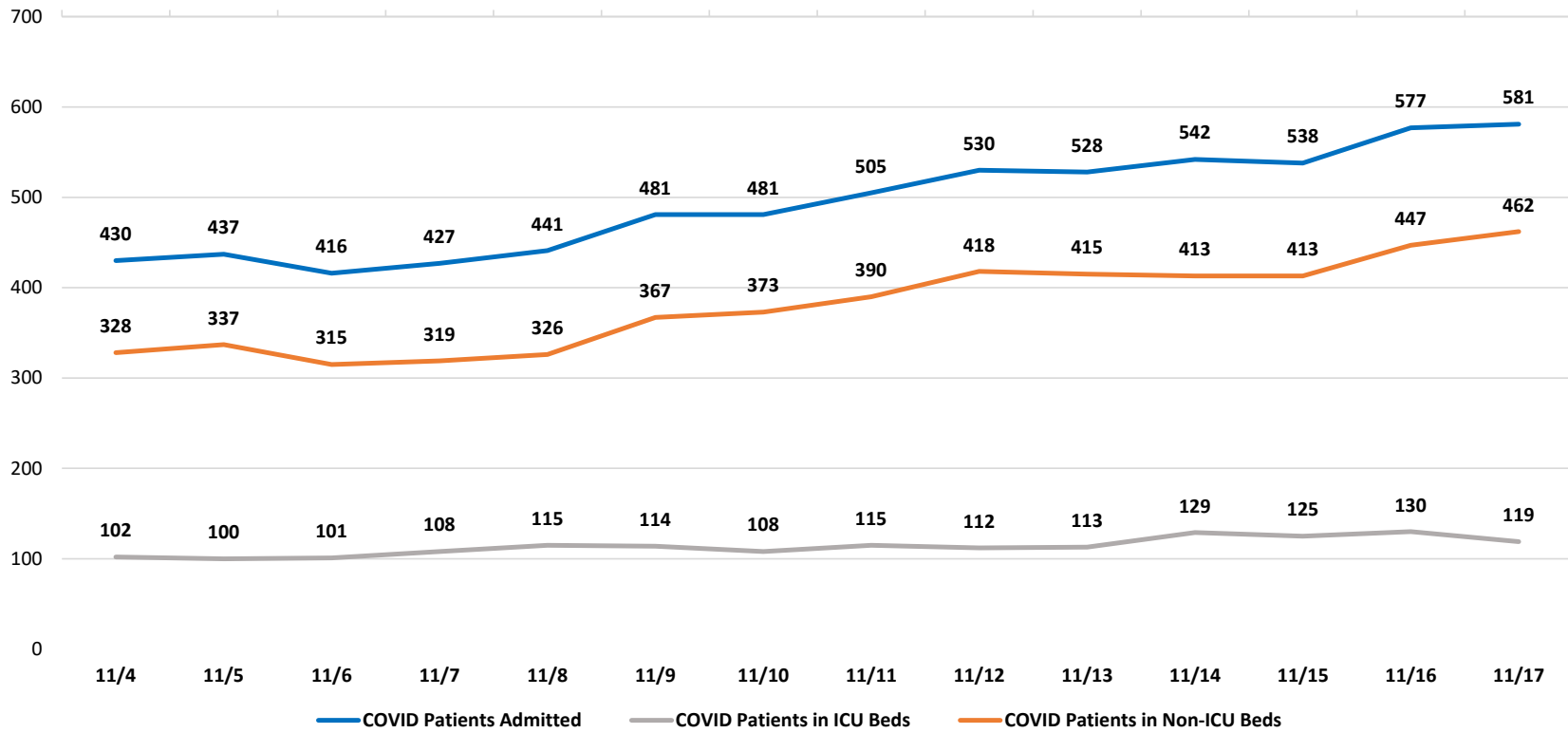


**14-day average: 7.88%**  
**New Reported Cases: 1,856**

Data Source: The daily positivity rate as reported by the State of Florida on the "County Report" [http://ww11.doh.state.fl.us/comm/partners/covid19\\_report\\_archive/county\\_reports\\_latest.pdf](http://ww11.doh.state.fl.us/comm/partners/covid19_report_archive/county_reports_latest.pdf)

# COVID-19 Admitted Patients

## COVID Patients Admitted



Data Source: Self-reported by hospitals as required by Emergency Order 18-20

**DAILY COVID-19 HOSPITAL STATISTICAL REPORT**

as of: 11/17/2020 12:15

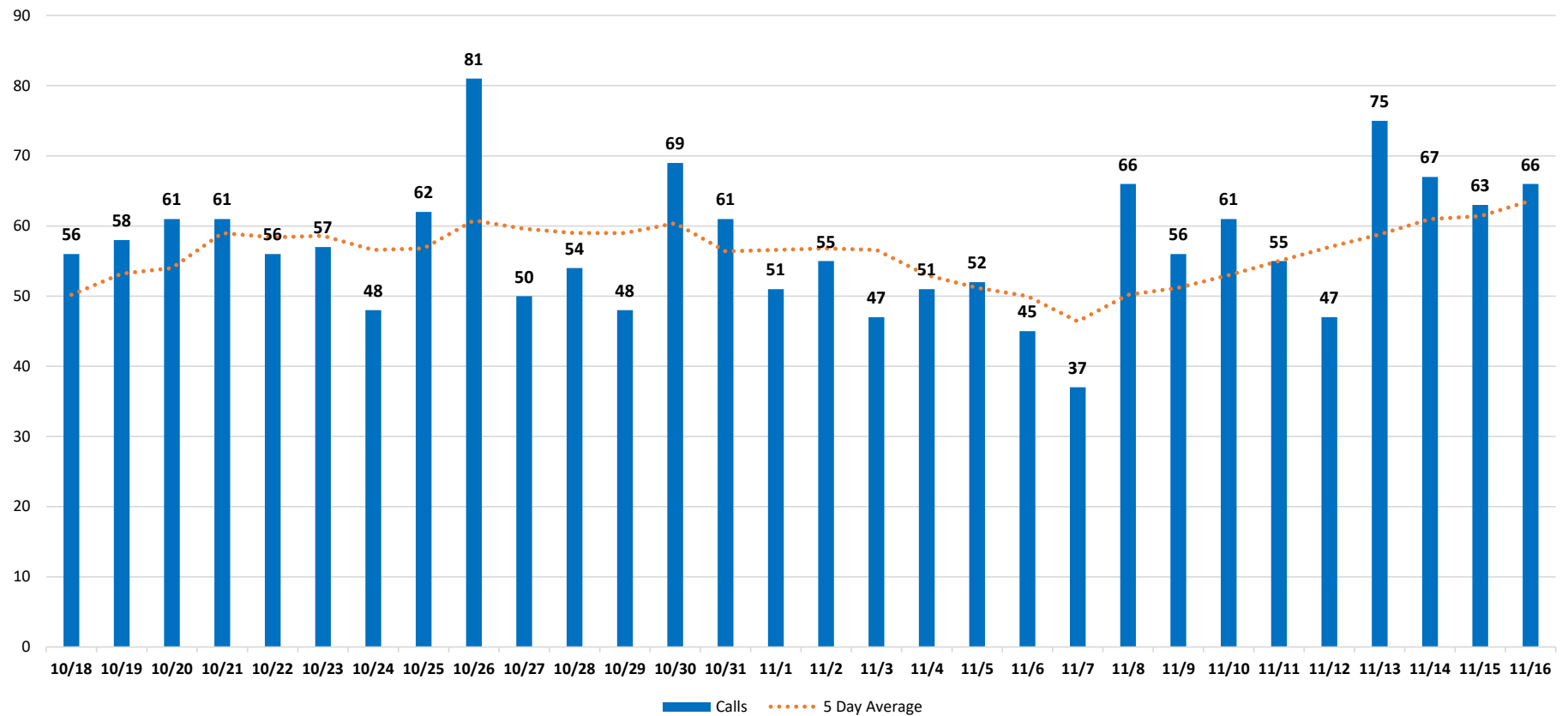
<b>Available Beds</b>	<b>11/04/2020</b>	<b>11/05/2020</b>	<b>11/06/2020</b>	<b>11/07/2020</b>	<b>11/08/2020</b>	<b>11/09/2020</b>	<b>11/10/2020</b>	<b>11/11/2020</b>	<b>11/12/2020</b>	<b>11/13/2020</b>	<b>11/14/2020</b>	<b>11/15/2020</b>	<b>11/16/2020</b>	<b>11/17/2020</b>
Acute Care Beds	5,410	5,411	5,424	5,404	5,370	5,367	5,390	5,398	5,410	5,410	5,393	5,394	5,408	5,432
Beds that may be converted to Acute Care Beds	756	757	753	753	753	750	747	745	743	744	744	744	749	747
ICU Beds	973	974	974	974	974	975	976	975	976	974	975	976	976	975
Beds that may be converted to ICU Beds	478	476	474	480	479	478	477	478	483	481	481	481	481	479
<b>Ventilators</b>														
Ventilators available for deployment	838	831	829	840	844	866	853	837	847	861	846	847	841	840
Ventilators on standby	139	140	142	135	139	139	132	132	129	121	116	120	119	114
Respirators/Anesthesia Machines that may be converted to Ventilators	441	441	441	441	441	440	440	440	441	420	438	441	441	440
<b>COVID-19 Cases</b>														
COVID Patients Admitted	430	437	416	427	441	481	481	505	530	528	542	538	577	581
COVID Patients in ICU Beds	102	100	101	108	115	114	108	115	112	113	129	125	130	119
COVID Patients in Non-ICU Beds	328	337	315	319	326	367	373	390	418	415	413	413	447	462
COVID Patients on ventilators	59	66	64	65	64	64	64	65	62	60	71	67	66	67
<b>COVID-19 Patients</b>														
New COVID Patients	71	66	45	69	53	55	52	72	71	70	65	66	78	71
COVID Patients Discharged	60	55	75	62	38	31	65	74	43	89	85	56	52	82

\*This data has been collected and compiled based on Emergency Order 18-20, as of the time noted. The information is submitted by the respective facilities and has not been audited.

\*\* As certain data points are clarified, information reported for prior periods may change

# Miami-Dade Fire Rescue Calls

## MDFR Suspected COVID-19 Calls

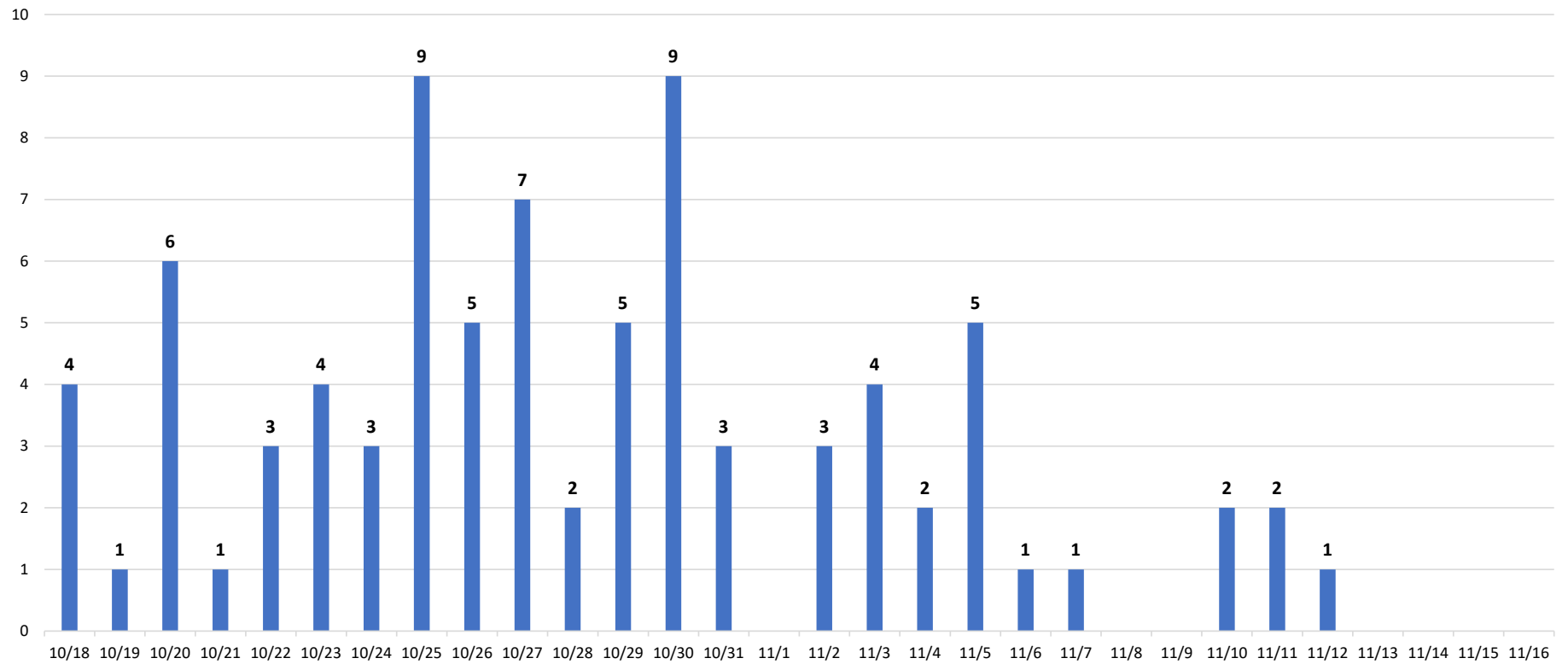


Data Source: Miami-Dade Fire Rescue

# Deaths by Day

Florida Department of Health through November 16<sup>th</sup>

FDOH Deaths by Day



Data Source: Florida Department of Health