

Moving to a New Normal Dashboard

January 14, 2021




Miami-Dade County Daily Summary

Moving to a New Normal Dashboard Summary

1) Trajectory of documented cases within a 14-day period

As of: 1/14/2021

New Reported Positives: 2,493

Trend: 

2) 14 consecutive days where positive test rate is below 10% on average

Daily Positive Rate: 8.96%

14-day Average: 10.10%

JHS Positive Rate: 11%

3) 30% Total and ICU Bed Capacity Available*

As of: 1/14/2021

COVID non-ICU Admissions: 922

Available non-ICU beds: 5,412

COVID ICU Admissions: 241

Available ICU beds: 978

4) Miami-Dade Fire Rescue COVID Calls

Calls for: 1/13/2021

Suspected COVID-19 Calls: 88

5-day Average: 95

5) Lab Turnaround Time Reported by FDOH

Cases Reported on: 1/13/2021

less than 3 days: 95.64%

4 to 7 days: 4.36%

7 or more days: 0.00%

6) COVID-19 Vaccination Program

Number of County-wide Vaccinations Since Inception: 94,065

7) Countywide Tracing Program

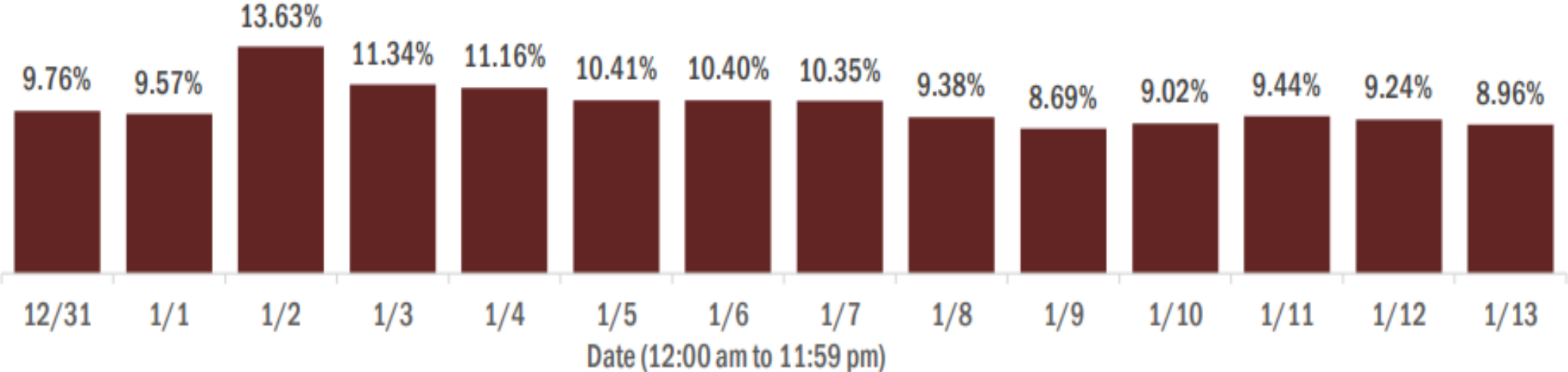
As of 12/09: 566 Contact Tracers in place

* Percentage represents the number of COVID positive patients utilizing hospital beds; does not include the 1,234 acute care and ICU beds that may be converted.

COVID-19 Daily Positive Rate

Percent positivity for new cases in Florida residents

These counts include the number of Florida residents for whom the department received PCR or antigen laboratory results by day. This percent is the number of people who test positive for the first time divided by all the people tested that day, excluding people who have previously tested positive.

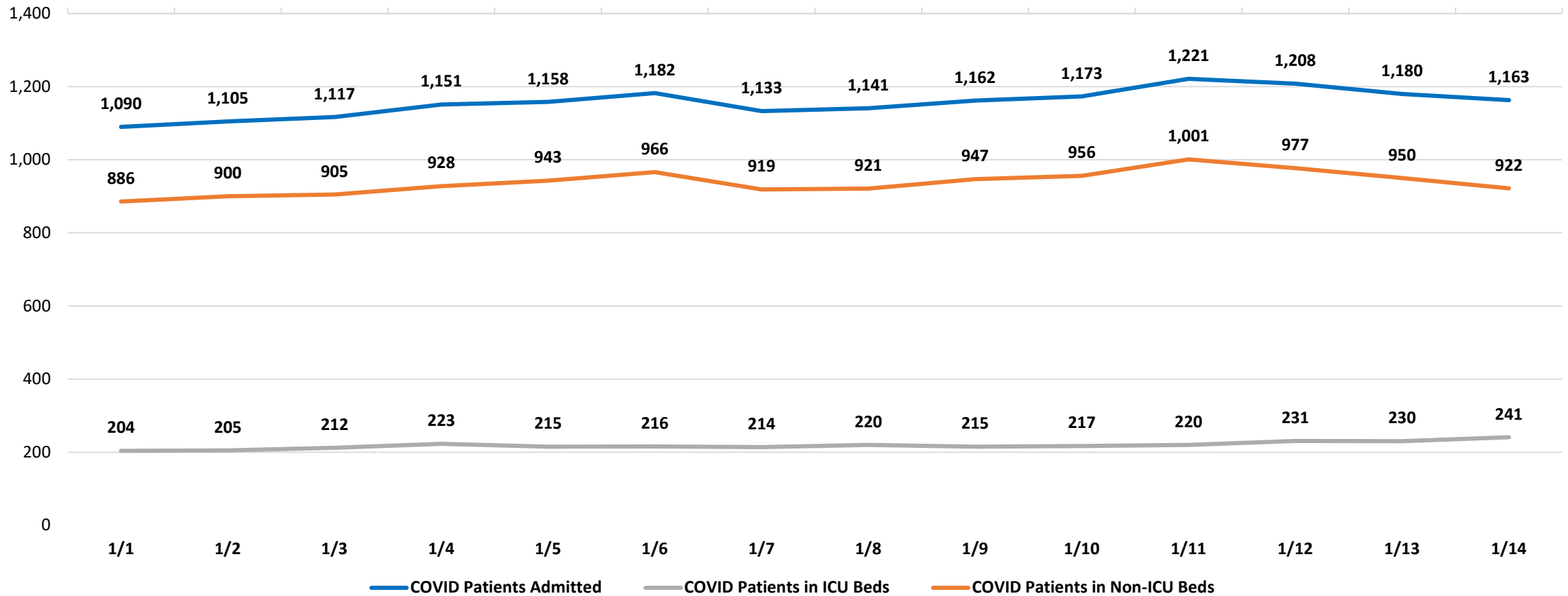


14-day average: 10.10%
New Reported Cases: 2,493

Data Source: The daily positivity rate as reported by the State of Florida on the "County Report" http://ww11.doh.state.fl.us/comm/partners/covid19_report_archive/county_reports_latest.pdf

Cumulative COVID-19 Admitted Patients

COVID Patients Admitted



DAILY COVID-19 HOSPITAL STATISTICAL REPORT
Last 14 Days

as of: 1/14/2021 15:00

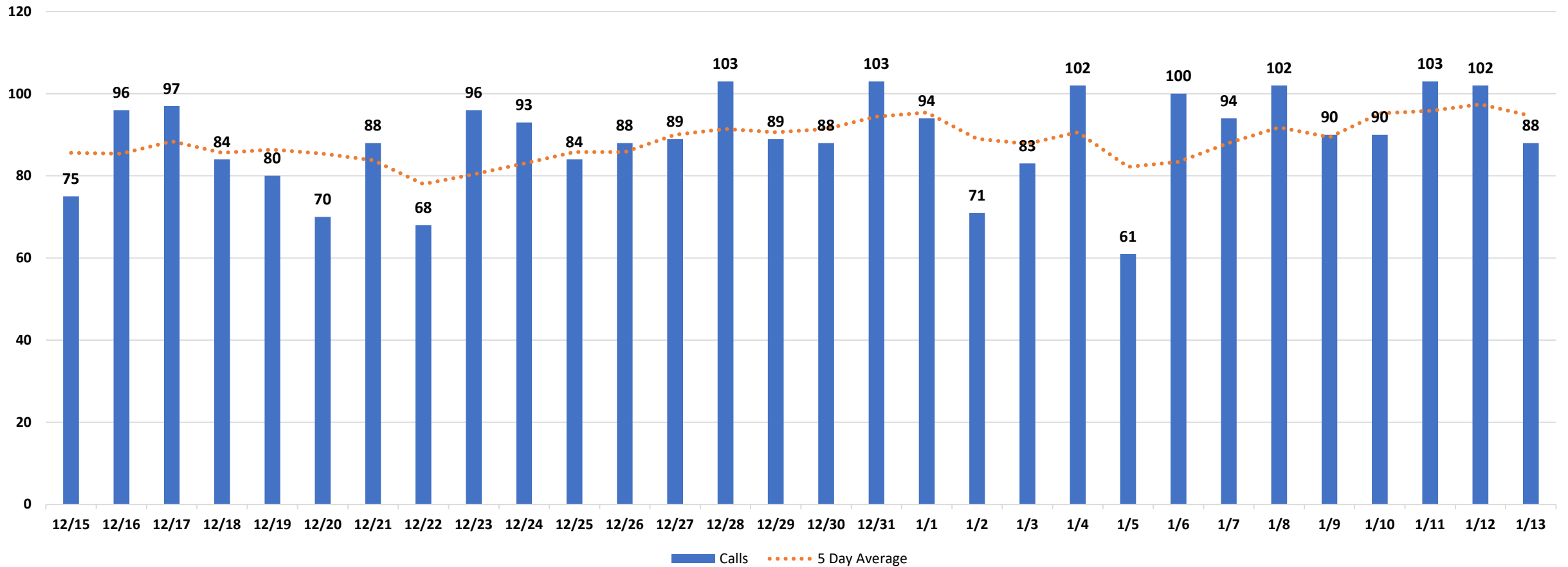
	1/1/2021	1/2/2021	1/3/2021	1/4/2021	1/5/2021	1/6/2021	1/7/2021	1/8/2021	1/9/2021	1/10/2021	1/11/2021	1/12/2021	1/13/2021	1/14/2021
Available Beds														
Acute Care Beds	5,361	5,309	5,324	5,334	5,346	5,375	5,396	5,407	5,386	5,385	5,374	5,389	5,410	5,412
Beds that may be converted to Acute Care Beds	734	734	734	762	736	761	760	760	735	735	760	760	763	759
ICU Beds	978	979	979	979	979	978	977	977	977	977	978	979	979	978
Beds that may be converted to ICU Beds	475	479	478	476	478	476	479	476	478	478	479	478	480	475
Ventilators														
Ventilators available for deployment	791	806	780	783	787	808	812	832	817	816	811	787	780	780
Ventilators on standby	113	111	104	109	110	108	114	112	115	114	103	86	86	84
Respirators/Anesthesia Machines that may be converted to Ventilators	440	440	439	439	439	440	440	440	439	439	438	439	439	440
COVID-19 Cases														
COVID Patients Admitted	1,090	1,105	1,117	1,151	1,158	1,182	1,133	1,141	1,162	1,173	1,221	1,208	1,180	1,163
COVID Patients in ICU Beds	204	205	212	223	215	216	214	220	215	217	220	231	230	241
COVID Patients in Non-ICU Beds	886	900	905	928	943	966	919	921	947	956	1,001	977	950	922
COVID Patients on ventilators	138	136	141	151	144	144	137	137	134	138	147	150	159	165
COVID-19 Patients														
New COVID Patients	111	114	117	109	127	108	100	119	120	110	119	93	146	104
COVID Patients Discharged	149	101	102	93	165	171	181	162	185	126	100	150	209	164

*This data has been collected and compiled based on Emergency Order 18-20, as of the time noted. The information is submitted by the respective facilities and has not been audited.

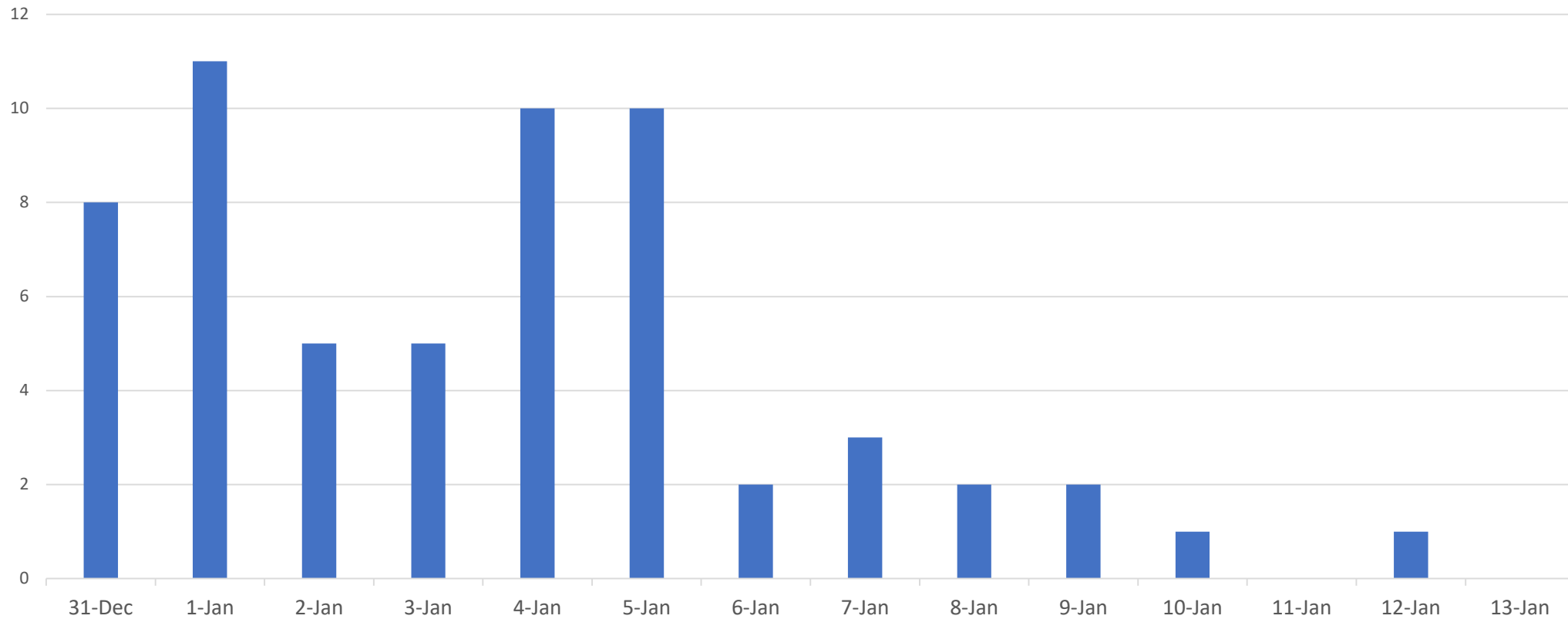
** As certain data points are clarified, information reported for prior periods may change

Miami-Dade Fire Rescue Calls

MDFR Suspected COVID-19 Calls Last 30 Days



Cumulative FDOH Deaths by Date Last 14 Days



**Miami Dade Total Number of
Deaths: 4,500**

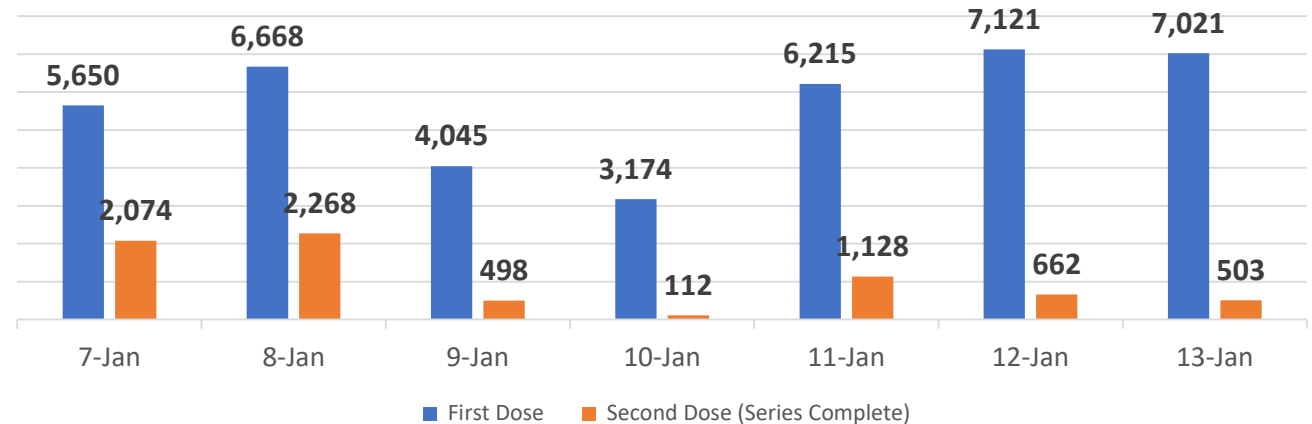
Miami-Dade County COVID-19 Vaccination Numbers

Last 7 Days

Daily Number Of People Vaccinated

Date	First Dose	Second Dose (Series Complete)
1/7/2021	5,650	2,074
1/8/2021	6,668	2,268
1/9/2021	4,045	498
1/10/2021	3,174	112
1/11/2021	6,215	1,128
1/12/2021	7,121	662
1/13/2021	7,021	503

Number of People Who Received COVID-19 Vaccination
Last 7 Days



Total Number of County-wide Vaccinations Since Inception: 94,065
(First Dose: 81,279 and Second Dose: 12,786)

Data in this report are provisional and subject to change.

Data in this summary pertain to COVID-19 vaccines approved by the U.S. Food and Drug Administration and have been issued an Emergency Use Authorization. These data summarize the number of people who have received either their first dose or have completed the series for a COVID-19 vaccine. A person can only be counted in one category, first dose or series complete.