

# Moving to a New Normal Dashboard

---

January 22, 2021




# Miami-Dade County Daily Summary

## Moving to a New Normal Dashboard Summary

### 1) Trajectory of documented cases within a 14-day period

As of: 1/22/2021

New Reported Positives: 2,264

Trend: 

### 2) 14 consecutive days where positive test rate is below 10% on average

Daily Positive Rate: 10.83%

14-day Average: 9.24%

JHS Positive Rate: 10%

### 3) 30% Total and ICU Bed Capacity Available\*

As of: 1/22/2021

COVID non-ICU Admissions: 847

Available non-ICU beds: 5,422

COVID ICU Admissions: 222

Available ICU beds: 978

### 4) Miami-Dade Fire Rescue COVID Calls

Calls for: 1/21/2021

Suspected COVID-19 Calls: 81

5-day Average: 79

### 5) Lab Turnaround Time Reported by FDOH

Cases Reported on: 1/21/2021

less than 3 days: 90.85%

4 to 7 days: 8.56%

7 or more days: 0.60%

### 6) COVID-19 Vaccination Program

Number of County-wide Vaccinations Since Inception: 143,257

### 7) Countywide Tracing Program

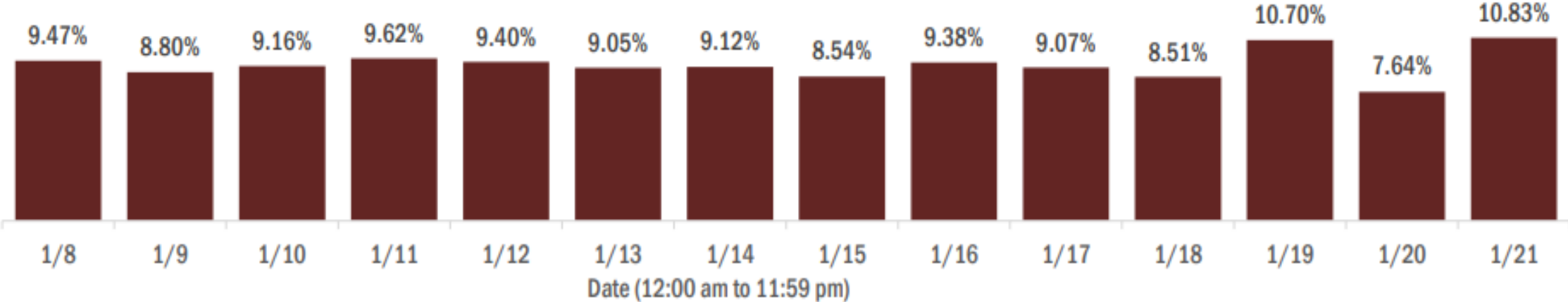
As of 12/09: 566 Contact Tracers in place

\* Percentage represents the number of COVID positive patients utilizing hospital beds; does not include the 1,230 acute care and ICU beds that may be converted.

# COVID-19 Daily Positive Rate

## Percent positivity for new cases in Florida residents

These counts include the number of Florida residents for whom the department received PCR or antigen laboratory results by day. This percent is the number of people who test positive for the first time divided by all the people tested that day, excluding people who have previously tested positive.

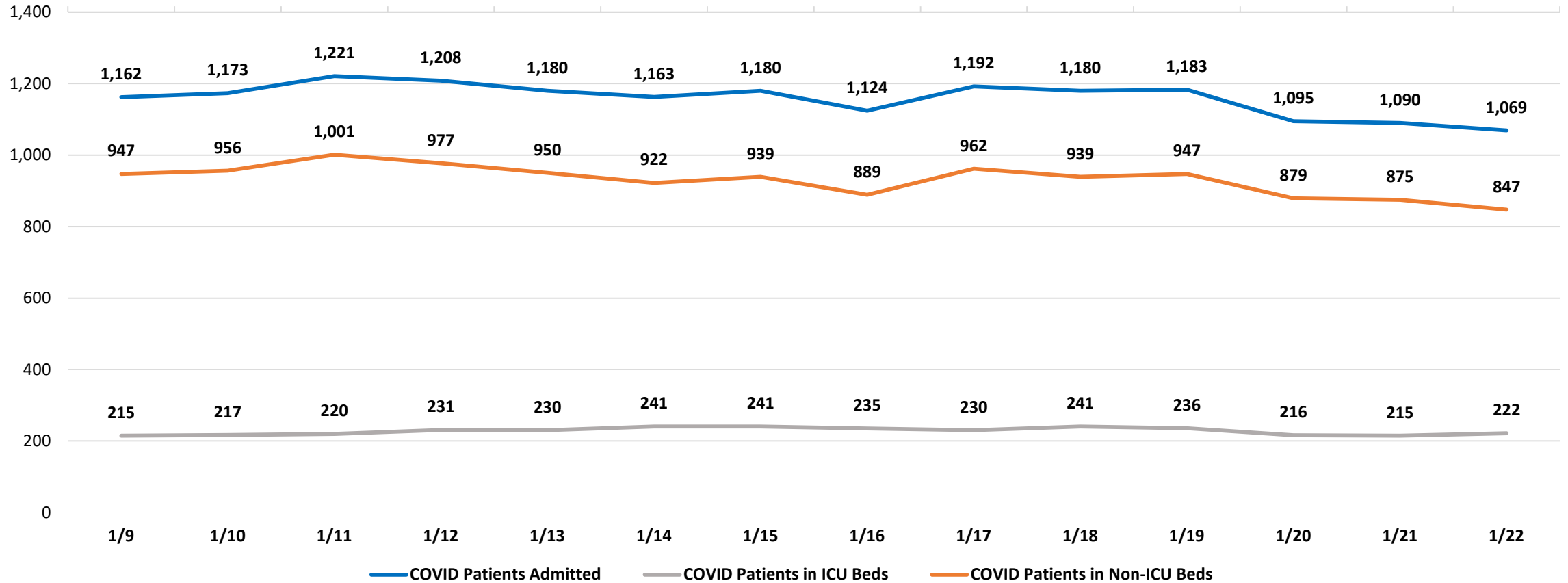


**14-day average: 9.24%**  
**New Reported Cases: 2,264**

Data Source: The daily positivity rate as reported by the State of Florida on the "County Report" [http://ww11.doh.state.fl.us/comm/partners/covid19\\_report\\_archive/county\\_reports\\_latest.pdf](http://ww11.doh.state.fl.us/comm/partners/covid19_report_archive/county_reports_latest.pdf)

# Cumulative COVID-19 Admitted Patients

## COVID Patients Admitted



Data Source: Self-reported by hospitals as required by Emergency Order 18-20

**DAILY COVID-19 HOSPITAL STATISTICAL REPORT**  
*Last 14 Days*

as of: 1/22/2021 15:43

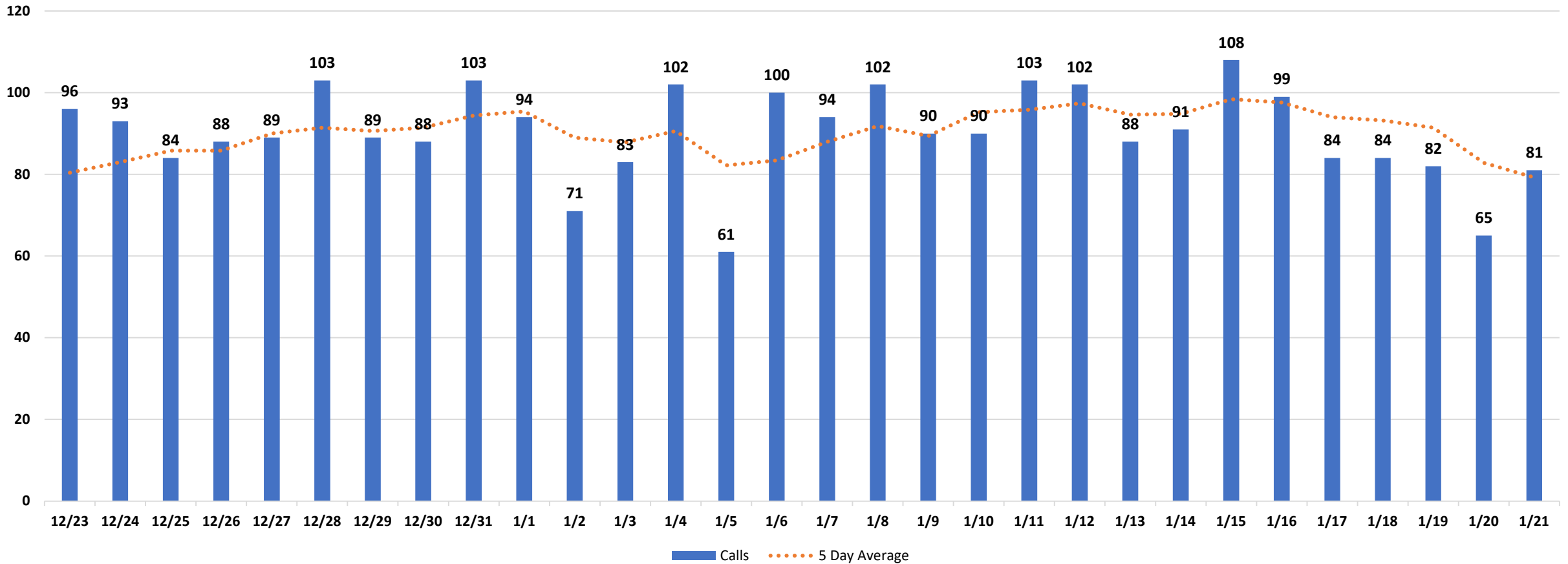
	1/9/2021	1/10/2021	1/11/2021	1/12/2021	1/13/2021	1/14/2021	1/15/2021	1/16/2021	1/17/2021	1/18/2021	1/19/2021	1/20/2021	1/21/2021	1/22/2021
<b>Available Beds</b>														
Acute Care Beds	5,386	5,385	5,374	5,389	5,410	5,412	5,387	5,395	5,387	5,389	5,387	5,402	5,411	5,422
Beds that may be converted to Acute Care Beds	735	735	760	760	763	759	755	755	730	726	726	749	749	750
ICU Beds	977	977	978	979	979	978	978	976	976	977	977	978	978	978
Beds that may be converted to ICU Beds	478	478	479	478	480	475	475	476	475	477	475	477	480	480
<b>Ventilators</b>														
Ventilators available for deployment	817	816	811	787	780	780	777	768	770	774	776	783	793	785
Ventilators on standby	115	114	103	86	86	84	88	83	85	86	87	98	99	103
Respirators/Anesthesia Machines that may be converted to Ventilators	439	439	438	439	439	440	440	438	440	440	439	440	440	440
<b>COVID-19 Cases</b>														
COVID Patients Admitted	1,162	1,173	1,221	1,208	1,180	1,163	1,180	1,124	1,192	1,180	1,183	1,095	1,090	1,069
COVID Patients in ICU Beds	215	217	220	231	230	241	241	235	230	241	236	216	215	222
COVID Patients in Non-ICU Beds	947	956	1,001	977	950	922	939	889	962	939	947	879	875	847
COVID Patients on ventilators	134	138	147	150	159	165	165	162	158	156	152	137	132	141
<b>COVID-19 Patients</b>														
New COVID Patients	120	110	119	93	146	104	135	115	144	84	115	102	115	109
COVID Patients Discharged	185	126	100	150	209	164	160	192	99	119	132	215	173	167

\*This data has been collected and compiled based on Emergency Order 18-20, as of the time noted. The information is submitted by the respective facilities and has not been audited.

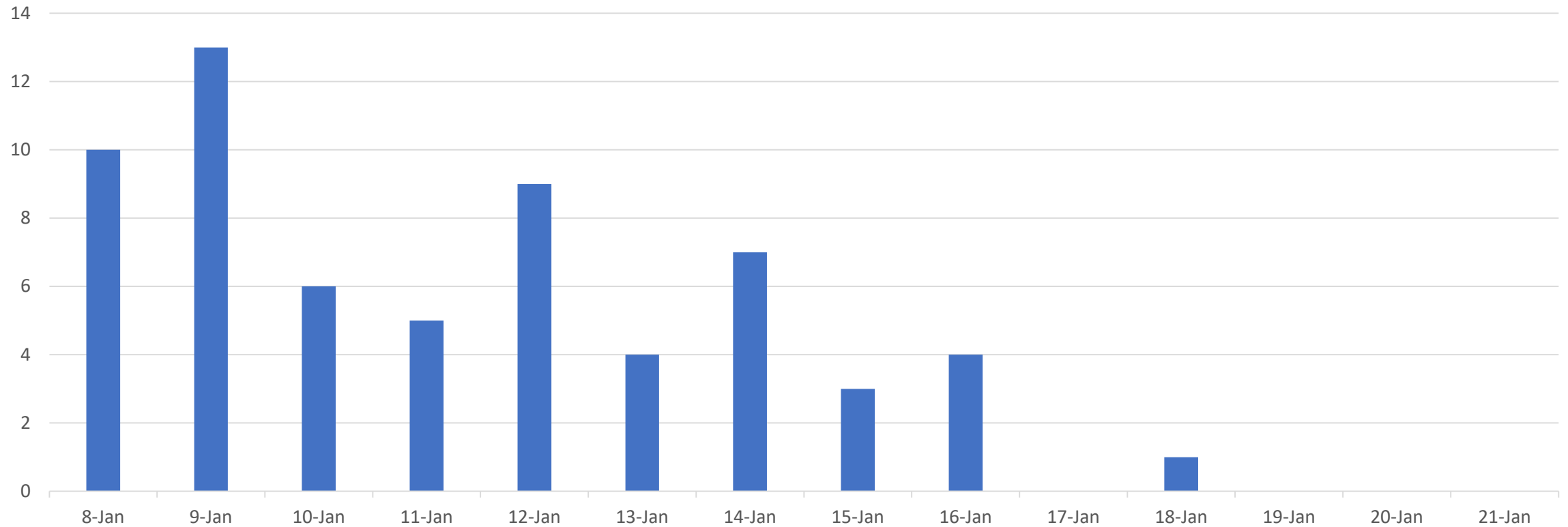
\*\* As certain data points are clarified, information reported for prior periods may change

# Miami-Dade Fire Rescue Calls

## MDFR Suspected COVID-19 Calls *Last 30 Days*



## Cumulative FDOH Deaths by Date Last 14 Days



**Miami Dade Total Number of  
Deaths: 4,678**

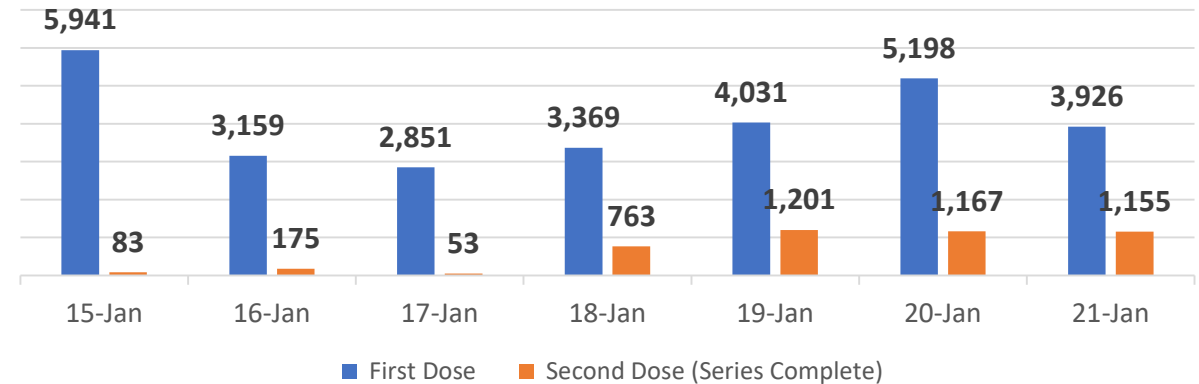
# Miami-Dade County COVID-19 Vaccination Numbers

*Last 7 Days*

Daily Number Of People Vaccinated

Date	First Dose	Second Dose (Series Complete)
1/15/2021	5,941	83
1/16/2021	3,159	175
1/17/2021	2,851	53
1/18/2021	3,369	763
1/19/2021	4,031	1,201
1/20/2021	5,198	1,167
1/21/2021	3,926	1,155

Number of People Who Received COVID-19 Vaccination  
*Last 7 Days*



**Total Number of County-wide Vaccinations Since Inception: 143,257**

*(First Dose: 121,155 and Second Dose: 22,102)*

**Data in this report are provisional and subject to change.**

Data in this summary pertain to COVID-19 vaccines approved by the U.S. Food and Drug Administration and have been issued an Emergency Use Authorization. These data summarize the number of people who have received either their first dose or have completed the series for a COVID-19 vaccine. A person can only be counted in one category, first dose or series complete.