

Miami Dade County  
Resources Recovery Facility  
COVANTA

**Summary of Lab Results - Water Quality Analysis**

PARAMETER	SEWER <sup>(1)</sup>	DAY 1 (02/14/23)		DAY 2 (02/15/23)		DAY 3 (02/16/23)		DAY 4 (02/17/23)	
	LIMIT (mg/L)	LOC# 1 (mg/L)	LOC# 2 (mg/L)	LOC# 1 (mg/L)	LOC# 2 (mg/L)	LOC# 1 (mg/L)	LOC# 2 (mg/L)	LOC# 1 (mg/L)	LOC# 3 (mg/L)
Benzene	0.2	0.0000371	U	0.0000289	0.0000054	0.0000173	0.0000124		
Mercury	0.01	0.0005321	0.0000151	0.000365	0.000139	0.000319	0.00024	0.000312	0.0002457
Cadmium	0.6	0.065	U						
Chromium	7.6	0.217	0.006						
Lead	0.7	0.813	0.018						
Copper	0.5	0.867	0.029						
Zinc	6.8	16.2	0.298						
TSS	200	196	27.5	67.5	69.5	45.3	96	45.3	96

Footnotes:

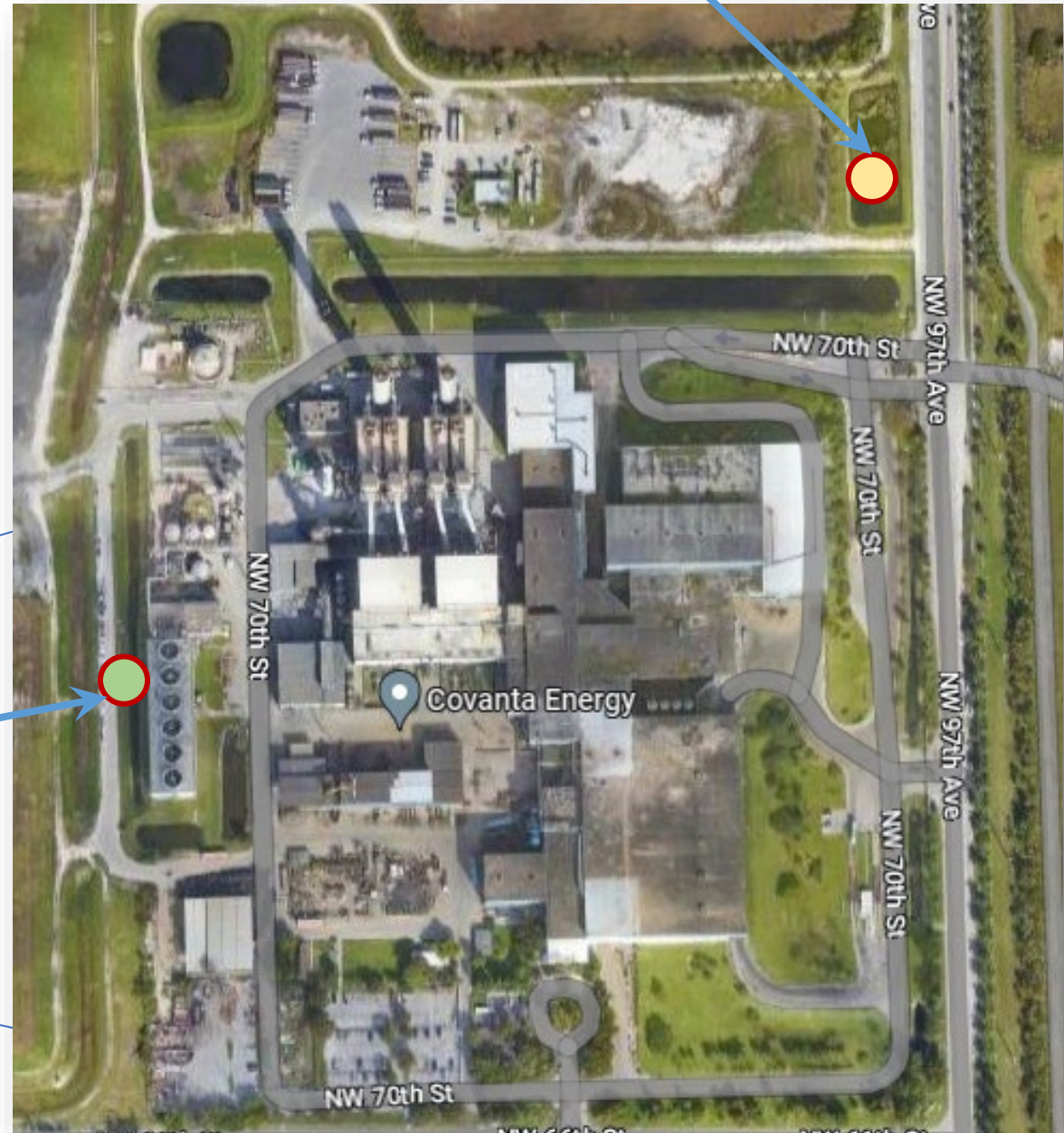
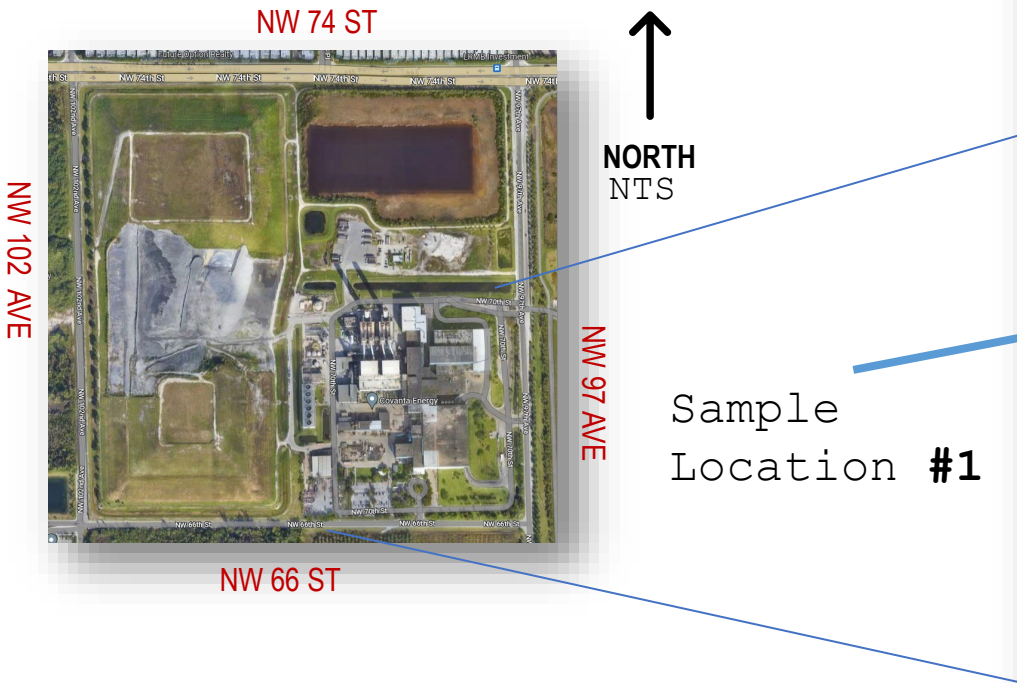
**(1)** Section 24-42.4 Sanitary sewer discharge limitations and pretreatment standards. Miami Dade County Environmental Protection Ordinance

**U** Below method detection limit (MDL)

Miami Dade County  
Resources Recovery Facility  
COVANTA

# SAMPLING LOCATION

Sample between 02/14 - 02/16

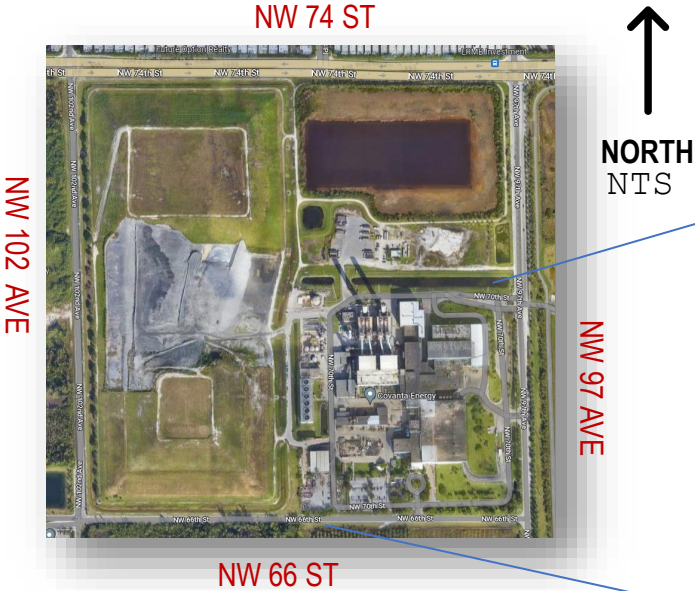




Miami Dade County  
Resources Recovery Facility  
COVANTA

# SAMPLING LOCATION

Sample on 02/17



Sample Location #3  
WASD Pump Station #9938



↑  
NORTH  
NTS