



**DORAL FLORIDA FACILITY FIRE**

**PRELIMINARY AIR MONITORING**

**SUMMARY**

---

Doral, Florida

07:00 February 20 - 07:00 February 21, 2023

Project #025114

## 1.0 INTRODUCTION

On February 16, 2023, Covanta Energy requested that CTEH®, LLC provide air monitoring and air sampling support in response to a fire at a Covanta Energy facility in Doral, Florida. CTEH® personnel mobilized to the incident site and began real-time air monitoring in the surrounding community at approximately 0800 Eastern Standard Time (EST) February 20, 2023. This report summarizes the real-time air monitoring data collected from 0700 EST February 20 to 0700 EST February 21, 2023.

## 2.0 AIR MONITORING AND SAMPLING METHODS

Real-time air monitoring refers to the use of direct-reading instruments to provide a near-instantaneous readout of a chemical concentration in air. CTEH® personnel developed and implemented an Air Sampling and Analysis Plan (SAP), which was reviewed by the U.S. EPA Region 4 On-Scene Coordinator (EPA Region 4 OSC) and other members of Incident Command, to characterize the nature and extent of emissions from the fire. During this reporting period, CTEH personnel conducted real-time air monitoring in accordance with the Community Monitoring plan outlined in the SAP. Community Monitoring was conducted in the residential and commercial locations surrounding the incident site, not necessarily occupied by members of the community. All Community Monitoring was conducted at a height representative of the breathing zone.

During this reporting period, CTEH® personnel conducted handheld real-time air monitoring for carbon monoxide (CO), hydrogen sulfide (H<sub>2</sub>S), hydrogen cyanide (HCN), atmospheric flammability measured as a percentage of the lower explosive limit (%LEL), particulate matter less than 2.5 microns (PM<sub>2.5</sub>), and volatile organic compounds (VOCs). Real-time air monitoring was conducted using RAE Systems by Honeywell MultiRAE, TSI DustTrak, and TSI SidePak AM520 handheld instruments.

CTEH personnel also deployed stationary radio-telemetering real-time air monitoring instruments (RAE Systems by Honeywell AreaRAE instruments) at four fixed locations. AreaRAE instruments were used to monitor for CO, H<sub>2</sub>S, %LEL, HCN, and VOCs every 15 seconds. In addition, four TSI SidePak AM520 instruments were deployed, co-located with AreaRAE instruments, to log PM<sub>2.5</sub> data.

To supplement real-time air monitoring, analytical air samples were collected at discrete locations around the incident site, co-located with AreaRAE instruments. Samples were collected for asbestos, polynuclear aromatic hydrocarbons, and metals. All samples will be shipped under chain-of-custody to Pace Analytical, an American Industrial Hygiene Association-accredited laboratory for analysis.

### 3.0 AIR MONITORING RESULTS

A summary of handheld real-time readings by location is provided in **Table 1**. Radio-telemetering AreaRAE data is provided in **Table 2**. Data-logged PM<sub>2.5</sub> readings are provided in **Table 3**. Real-time air monitoring action level references, selected in coordination with the EPA Region 4 OSC, are provided in **Table 4**. A PM<sub>2.5</sub> action level sheet provided by the EPA Region 4 OSC is included as **Attachment A**. Maps of the incident location and air monitoring/sampling locations are provided in **Attachment B**. Graphical representations of radio-telemetering AreaRAE data are provided in **Attachment C**. Graphical representations of data-logged PM<sub>2.5</sub> readings are provided in **Attachment D**.

**Table 1: Community Handheld Real-Time Air Monitoring Results By Location<sup>†</sup>**

Location Code	Location Description	Analyte	Instrument(s)	Number of Readings	Number of Detections	Range of Detections*	Period Average*	Action Level
FRT-001	107 and 66th	%LEL	MultiRAE	1	0	< 1 %	< 1 %	10 %
		CO	MultiRAE	4	0	< 1 ppm	< 1 ppm	83 ppm
		HCN	MultiRAE	1	0	< 0.5 ppm	< 0.5 ppm	2 ppm
		PM <sub>2.5</sub>	AM520/DustTrak	15	15	10 - 44 µg/m <sup>3</sup>	22 µg/m <sup>3</sup>	See PM2.5 Action Level Sheet
FRT-002	CVS at 107 and 74	%LEL	MultiRAE	1	0	< 1 %	< 1 %	10 %
		CO	MultiRAE	2	0	< 1 ppm	< 1 ppm	83 ppm
		H <sub>2</sub> S	MultiRAE	1	0	< 0.1 ppm	< 0.1 ppm	0.5 ppm
		HCN	MultiRAE	2	0	< 0.5 ppm	< 0.5 ppm	2 ppm
		PM <sub>2.5</sub>	AM520/DustTrak	13	13	13 - 29 µg/m <sup>3</sup>	18 µg/m <sup>3</sup>	See PM2.5 Action Level Sheet
		VOCs	MultiRAE	2	0	< 0.1 ppm	< 0.1 ppm	1 ppm
FRT-003	Ronald Reagan High School	CO	MultiRAE	2	0	< 1 ppm	< 1 ppm	83 ppm
		H <sub>2</sub> S	MultiRAE	2	0	< 0.1 ppm	< 0.1 ppm	0.5 ppm
		HCN	MultiRAE	3	0	< 0.5 ppm	< 0.5 ppm	2 ppm
		PM <sub>2.5</sub>	AM520/DustTrak	17	17	15 – 159** µg/m <sup>3</sup>	38 µg/m <sup>3**</sup>	See PM2.5 Action Level Sheet
FRT-004	8400 102nd Ave, Southeast Corner	%LEL	MultiRAE	1	0	< 1 %	< 1 %	10 %
		CO	MultiRAE	1	0	< 1 ppm	< 1 ppm	83 ppm
		H <sub>2</sub> S	MultiRAE	3	0	< 0.1 ppm	< 0.1 ppm	0.5 ppm
		HCN	MultiRAE	3	0	< 0.5 ppm	< 0.5 ppm	2 ppm
		PM <sub>2.5</sub>	AM520/DustTrak	16	16	10 - 36 µg/m <sup>3</sup>	19 µg/m <sup>3</sup>	See PM2.5 Action Level Sheet
FRT-005	Andrea Castillo Preparatory Academy	%LEL	MultiRAE	2	0	< 1 %	< 1 %	10 %
		CO	MultiRAE	3	0	< 1 ppm	< 1 ppm	83 ppm
		H <sub>2</sub> S	MultiRAE	1	0	< 0.1 ppm	< 0.1 ppm	0.5 ppm
		HCN	MultiRAE	3	0	< 0.5 ppm	< 0.5 ppm	2 ppm

Location Code	Location Description	Analyte	Instrument(s)	Number of Readings	Number of Detections	Range of Detections*	Period Average*	Action Level
FRT-006	Baptist Health Hospital ER	PM <sub>2.5</sub>	AM520/DustTrak	16	16	10 - 30 µg/m <sup>3</sup>	19 µg/m <sup>3</sup>	See PM2.5 Action Level Sheet
		%LEL	MultiRAE	2	0	< 1 %	< 1 %	10 %
		CO	MultiRAE	2	0	< 1 ppm	< 1 ppm	83 ppm
		H <sub>2</sub> S	MultiRAE	2	0	< 0.1 ppm	< 0.1 ppm	0.5 ppm
		HCN	MultiRAE	1	0	< 0.5 ppm	< 0.5 ppm	2 ppm
		PM <sub>2.5</sub>	AM520/DustTrak	19	19	10 - 32 µg/m <sup>3</sup>	21 µg/m <sup>3</sup>	See PM2.5 Action Level Sheet
FRT-007	Impact Centre at Doral Entrance	VOCs	MultiRAE	1	0	< 0.1 ppm	< 0.1 ppm	1 ppm
		CO	MultiRAE	2	0	< 1 ppm	< 1 ppm	83 ppm
		H <sub>2</sub> S	MultiRAE	1	0	< 0.1 ppm	< 0.1 ppm	0.5 ppm
		HCN	MultiRAE	2	0	< 0.5 ppm	< 0.5 ppm	2 ppm
		PM <sub>2.5</sub>	AM520/DustTrak	18	18	10 - 47 µg/m <sup>3</sup>	22 µg/m <sup>3</sup>	See PM2.5 Action Level Sheet
FRT-008	Aldi Parking lot	VOCs	MultiRAE	2	0	< 0.1 ppm	< 0.1 ppm	1 ppm
		%LEL	MultiRAE	1	0	< 1 %	< 1 %	10 %
		CO	MultiRAE	2	0	< 1 ppm	< 1 ppm	83 ppm
		H <sub>2</sub> S	MultiRAE	2	0	< 0.1 ppm	< 0.1 ppm	0.5 ppm
		HCN	MultiRAE	3	0	< 0.5 ppm	< 0.5 ppm	2 ppm
FRT-009	Side of 58th, Next to Golf Course.	PM <sub>2.5</sub>	AM520/DustTrak	15	15	10 - 26 µg/m <sup>3</sup>	18 µg/m <sup>3</sup>	See PM2.5 Action Level Sheet
		%LEL	MultiRAE	3	0	< 1 %	< 1 %	10 %
		CO	MultiRAE	2	0	< 1 ppm	< 1 ppm	83 ppm
		H <sub>2</sub> S	MultiRAE	1	0	< 0.1 ppm	< 0.1 ppm	0.5 ppm
		HCN	MultiRAE	2	0	< 0.5 ppm	< 0.5 ppm	2 ppm
Station 2	Southeast Corner of Stack	PM <sub>2.5</sub>	AM520/DustTrak	22	22	9 - 61 µg/m <sup>3</sup>	17 µg/m <sup>3</sup>	See PM2.5 Action Level Sheet
		HCN	MultiRAE	1	0	< 0.5 ppm	< 0.5 ppm	2 ppm
Station 3	West Fenceline	PM <sub>2.5</sub>	AM520/DustTrak	49	49	8 - 55 µg/m <sup>3</sup>	15 µg/m <sup>3</sup>	See PM2.5 Action Level Sheet
		VOCs	MultiRAE	2	0	< 0.1 ppm	< 0.1 ppm	1 ppm
Station 4	North Fenceline	PM <sub>2.5</sub>	AM520/DustTrak	28	28	9 - 53 µg/m <sup>3</sup>	19 µg/m <sup>3</sup>	See PM2.5 Action Level Sheet

\* Note: This is a preliminary data summary, indicating that the data provided have not undergone the full quality assurance and quality control (QAQC) process and should be considered preliminary at this time.

\* If no detectable concentration was observed, the instrument detection limit preceded by a "<" is listed.

ppm = parts per million; µg/m<sup>3</sup> = micrograms per cubic meter

\*\* At location FRT-003 (Ronald Reagan High School) between 9:30 pm and 10:30 pm EST on February 20, CTEH observed smoke associated with grilling/cooking activities at a nearby residence. FRT-003 was downwind of these grilling/cooking activities and PM<sub>2.5</sub> levels during this period were measured between 142-159 µg/m<sup>3</sup>. Excluding these PM<sub>2.5</sub> readings, the adjusted period average PM<sub>2.5</sub> level at FRT-003 was 23 µg/m<sup>3</sup>.

**Table 2: Radio-Telemetry Air Monitoring Results<sup>†</sup>**

Location Code	Location	Analyte	Number of Readings	Number of Detections	Concentration Range*	Period Average*	Action Level
Station 01	South Fenceline	%LEL	2,922	0	< 1 %	< 1 %	10 %
		CO	2,922	0	< 1 ppm	< 1 ppm	83 ppm
		H <sub>2</sub> S	2,922	0	< 0.1 ppm	< 0.1 ppm	0.5 ppm
		HCN	2,922	0	< 1 ppm	< 1 ppm	2 ppm
		VOCs	2,922	1	0.1 ppm	0.003 ppm	1 ppm
Station 02	Southeast Corner of Stack	%LEL	3,153	0	< 1 %	< 1 %	10 %
		CO	3,153	0	< 1 ppm	< 1 ppm	83 ppm
		H <sub>2</sub> S	3,153	0	< 0.1 ppm	< 0.1 ppm	0.5 ppm
		HCN	3,153	0	< 1 ppm	< 1 ppm	2 ppm
		VOCs	3,153	0	< 0.1 ppm	< 0.1 ppm	1 ppm
Station 03	West Fenceline	%LEL	2,437	0	< 1 %	< 1 %	10 %
		CO	2,437	0	< 1 ppm	< 1 ppm	83 ppm
		H <sub>2</sub> S	2,437	0	< 0.1 ppm	< 0.1 ppm	0.5 ppm
		HCN	2,437	0	< 1 ppm	< 1 ppm	2 ppm
		VOCs	2,239	258	0.1 ppm	0.039 ppm	1 ppm
Station 04	North Fenceline	%LEL	3,925	0	< 1 %	< 1 %	10 %
		CO	3,925	0	< 1 ppm	< 1 ppm	83 ppm
		H <sub>2</sub> S	3,925	0	< 0.1 ppm	< 0.1 ppm	0.5 ppm
		HCN	3,925	0	< 1 ppm	< 1 ppm	2 ppm
		VOCs	3,925	0	< 0.1 ppm	< 0.1 ppm	1 ppm

<sup>†</sup> Note: This is a preliminary data summary, indicating that the data provided have not undergone the full quality assurance and quality control (QAQC) process and should be considered preliminary at this time.

\* If no detectable concentration was observed, the instrument detection limit preceded by a "<" is listed

ppm = parts per million

**Table 3: Data-Logged PM<sub>2.5</sub> Real-Time Air Monitoring Results<sup>†</sup>**

Location Code	Location Description	Number of Readings	Concentration Range	Period Average*	Action Level
Station 1	South Fenceline	75,435	1 - 257 µg/m <sup>3</sup>	14 µg/m <sup>3</sup>	See PM2.5 Action Level Sheet
Station 2	Southeast Corner of Stack	68,551	4 - 529 µg/m <sup>3</sup>	29 µg/m <sup>3</sup>	See PM2.5 Action Level Sheet
Station 3	West Fenceline	39,726	8 - 661 µg/m <sup>3</sup>	33 µg/m <sup>3</sup>	See PM2.5 Action Level Sheet
Station 4	North Fenceline	75,911	7 - 608 µg/m <sup>3</sup>	36 µg/m <sup>3</sup>	See PM2.5 Action Level Sheet

<sup>†</sup> Note: This is a preliminary data summary, indicating that the data provided have not undergone the full quality assurance and quality control (QAQC) process and should be considered preliminary at this time.

\* Data collected from 07:00 February 20 to 05:30 EST February 21, 2023

µg/m<sup>3</sup> = micrograms per cubic meter

**Table 4: Action Level References<sup>†</sup>**

Analyte	Definition	Action Level Reference
VOCs	Volatile Organic Compounds	Temporary Emergency Exposure Limit (TEEL-0) for Benzene
CO	Carbon Monoxide	Acute Exposure Guideline Level (AEGL-2) 1-hr
H <sub>2</sub> S	Hydrogen Sulfide	AEGL-1, 1 hr
%LEL	Lower Explosive Limit	29 CFR 1910.146, Confined Spaces
HCN	Hydrogen Cyanide	AEGL-1, 1 hr
PM <sub>2.5</sub>	Particulate Matter < 2.5 Microns	See PM2.5 Action Level Sheet

<sup>†</sup> Action levels selected in coordination with EPA Region 4 OSC

## 4.0 METEOROLOGICAL CONDITIONS

**Attachment E** contains a wind rose depicting wind speed and direction for this reporting period. Wind data is obtained from publicly available information collected at the Miami International Airport.

# Attachment A

---

## PM<sub>2.5</sub> Action Level Sheet

Provided by EPA Region 4 OSC

## PM<sub>2.5</sub> (Particulate Matter ≤ 2.5 microns) Community Action Threshold Levels

1-Hour Average (µg/m <sup>3</sup> )	24-Hour Average (µg/m <sup>3</sup> )	Level of Health Concern	Meaning	Action
0.0 - 40.0	0.0-12.0	<b>Good</b>	Air Quality is considered satisfactory, and air pollution poses little or no risk.	Implement communication plan.
40.1 - 80.0	12.1 - 35.4	<b>Moderate</b>	Air quality is acceptable; however, for some pollutants there may be a moderate health concern for a very small number of people who are unusually sensitive to air pollution.	Issue public announcement about health effects. Stay out of areas with visible smoke.
80.1 - 175.0	35.5 - 55.4	<b>Unhealthy for Sensitive Groups</b>	Members of sensitive groups may experience health effects. The general public is not likely to be affected.	Recommend evacuation or shelter-in-place for sensitive populations.
175.1 - 300.0	55.5 - 150.4	<b>Unhealthy</b>	Everyone may begin to experience health effects; members of sensitive groups may experience more serious health effects.	Consider closing schools and cancelling outdoor events. Recommend shelter-in-place for affected neighborhoods.
300.1 - 500.0	150.5 - 250.4	<b>Very Unhealthy</b>	Health warnings of emergency conditions. The entire population is more likely to be affected.	Consider closing schools and cancel all outdoor events. Recommend shelter-in-place and/or evacuation for affected neighborhoods.
> 500.0	> 250.5	<b>Hazardous</b>	Health alert: everyone may experience more serious health effects.	Recommend closing schools & cancel outdoor events. Recommend closing workplaces and evacuating affected neighborhoods.



# Attachment B

---

## Maps

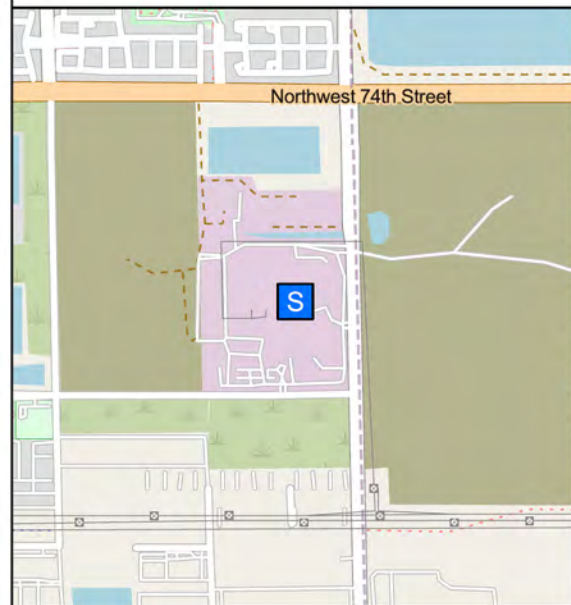


## Doral Florida Facility Fire

Incident Location

Doral, FL | Miami-Dade County

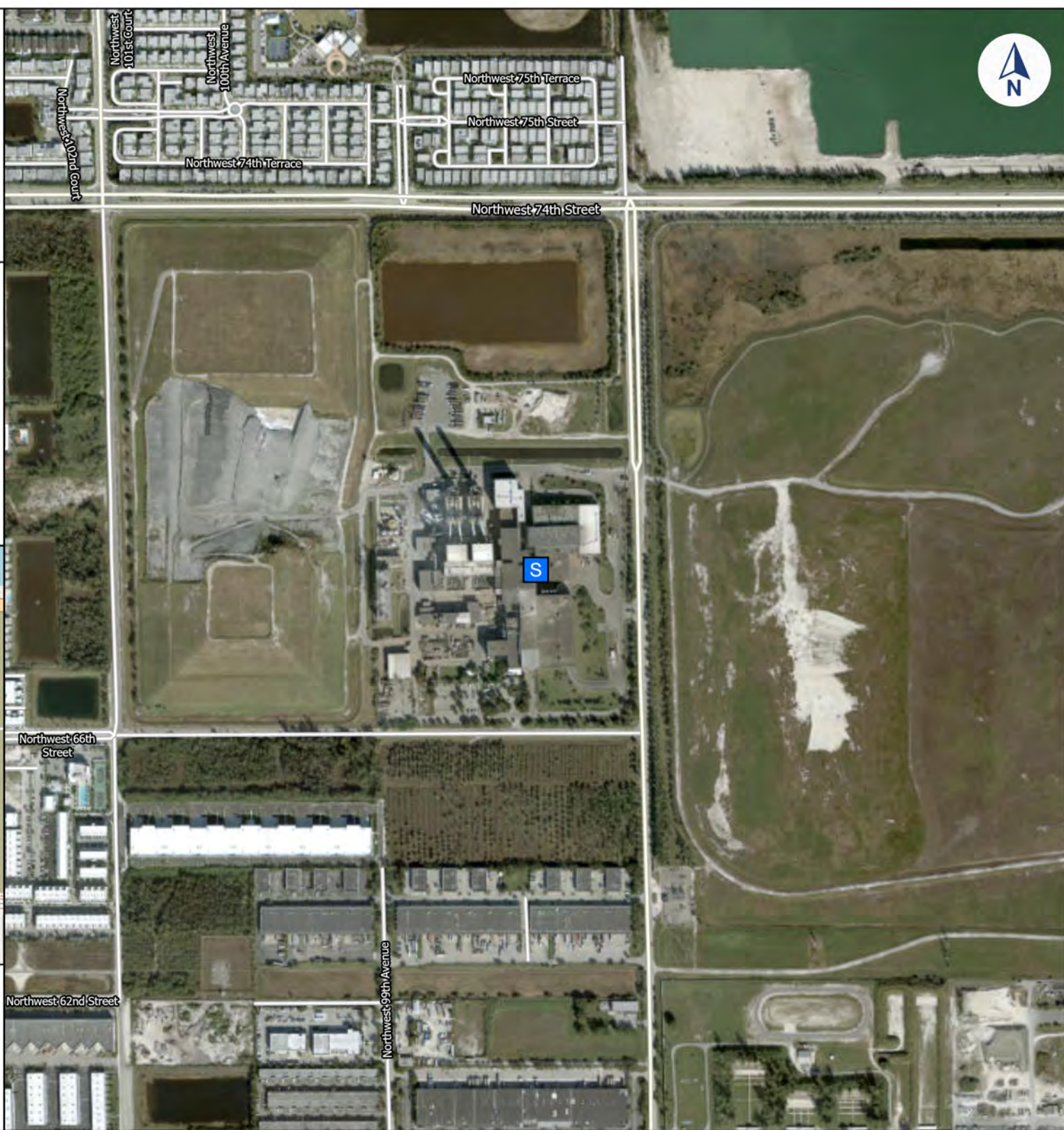
PROJ-025114



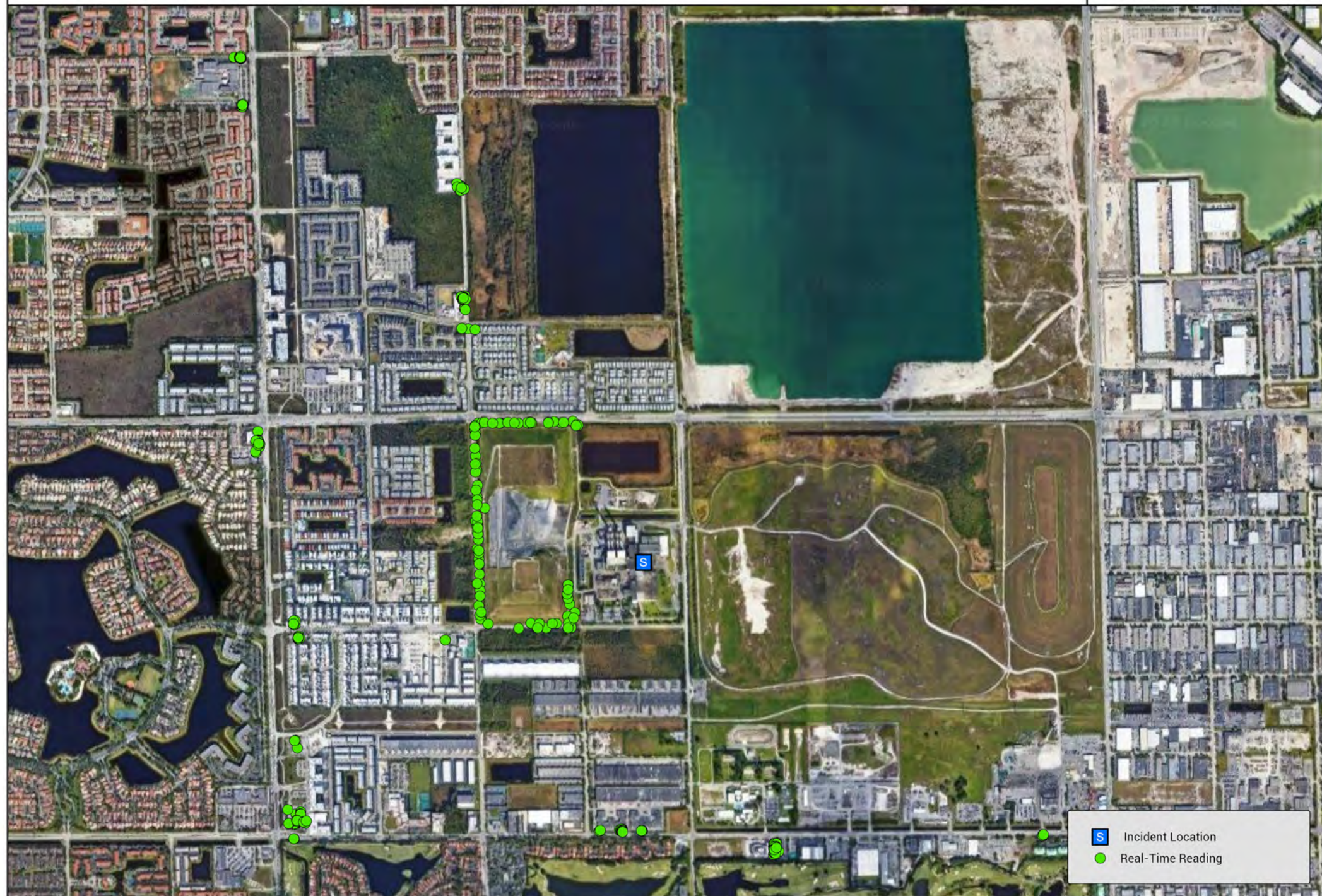
Incident Location

Updated At: 2/18/2023 8:51 AM

Projection: GCS WGS 1984



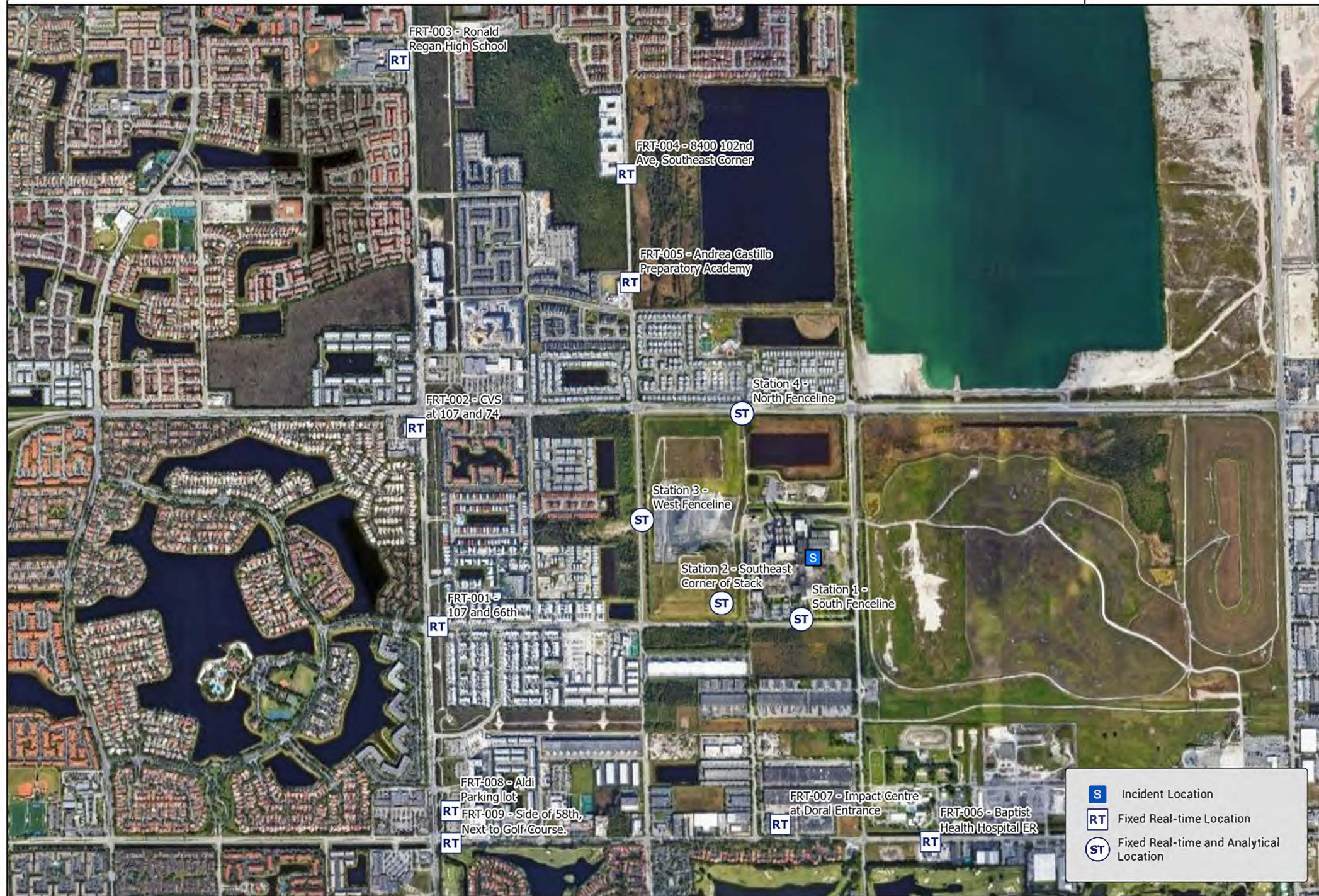














# Attachment C

---

## AreaRAE Graphs

# Preliminary Remote-telemetered Real-time Air Monitoring Readings

PROJ-025114 | Doral Florida Facility Fire | Doral, FL

02/19/2023 07:00 to 02/20/2023 06:46 | **Analyte: %LEL**



02/19/2023 11:00 02/19/2023 15:00 02/19/2023 19:00 02/19/2023 23:00 02/20/2023 03:00

# Preliminary Remote-telemetered Real-time Air Monitoring Readings

PROJ-025114 | Doral Florida Facility Fire | Doral, FL

02/19/2023 07:00 to 02/20/2023 06:46 | **Analyte: CO (ppm)**



02/19/2023 11:00 02/19/2023 15:00 02/19/2023 19:00 02/19/2023 23:00 02/20/2023 03:00



# Preliminary Remote-telemetered Real-time Air Monitoring Readings

PROJ-025114 | Doral Florida Facility Fire | Doral, FL  
02/19/2023 07:00 to 02/20/2023 06:46 | Analyte: H2S (ppm)



# Preliminary Remote-telemetered Real-time Air Monitoring Readings

PROJ-025114 | Doral Florida Facility Fire | Doral, FL

02/19/2023 07:00 to 02/20/2023 06:46 | **Analyte: HCN (ppm)**



# Preliminary Remote-telemetered Real-time Air Monitoring Readings

PROJ-025114 | Doral Florida Facility Fire | Doral, FL

02/19/2023 07:00 to 02/20/2023 06:46 | Analyte: VOCs (ppm)



# Attachment D

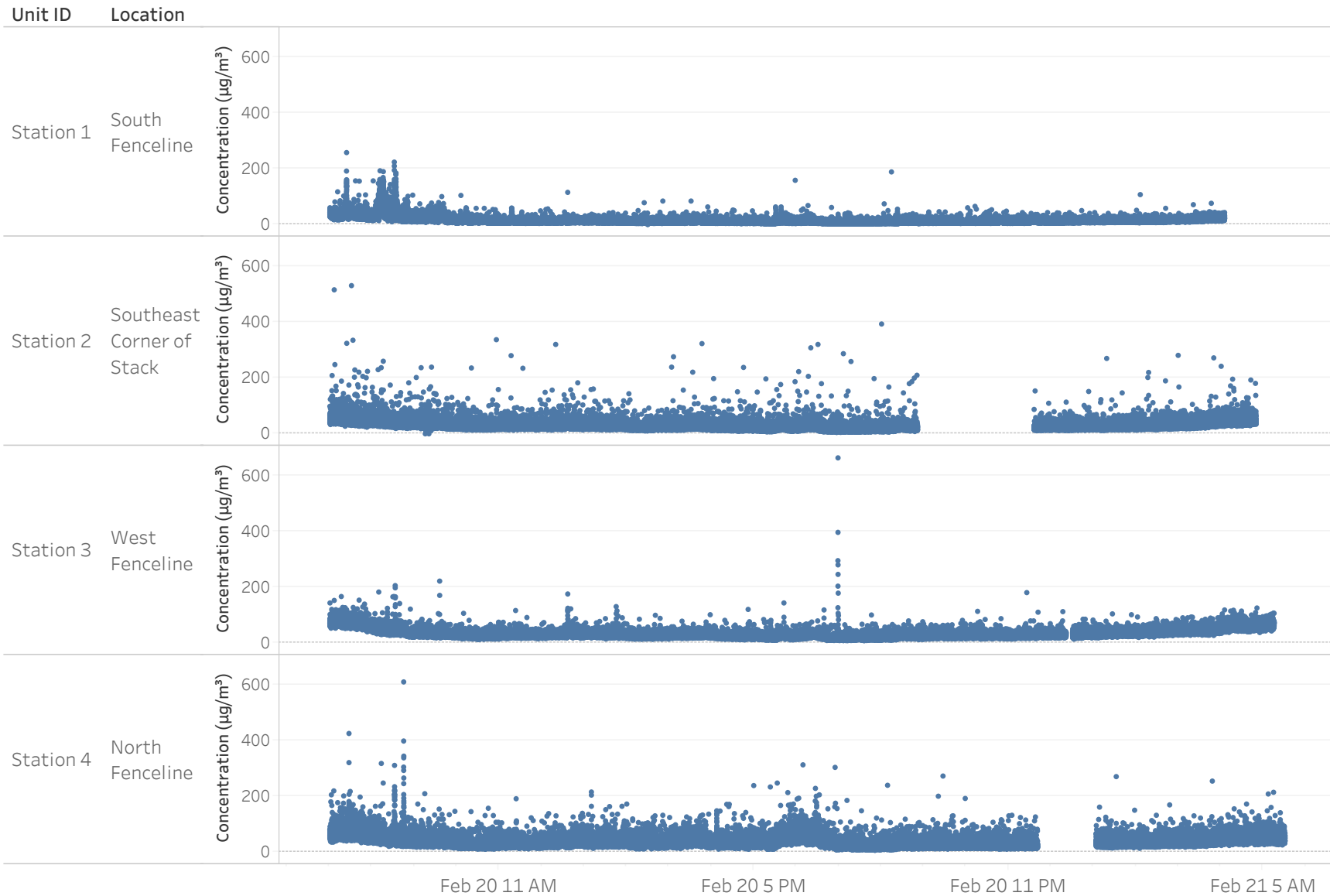
---

## AM520 Graphs

# Datalogged PM2.5 Air Monitoring Results

PROJ-025114 | Doral Florida Facility Fire | Doral, FL

2/20/2023 7:00:00 AM to 2/21/2023 5:30:23 AM



# Attachment E

---

## Meteorological Conditions

Weather Station: MIAMI INTL AIRPORT  
02/20/2023 07:00 TO 02/21/2023 07:00

