

FDOT LANDSCAPE BEAUTIFICATION PROJECT

SR-9A/I-95 from NW 17th Street to NW 8th
Street (SR-836/I-395 Interchange)
FM# 423452-1-52-01



Paul Moss Jr. R.L.A.,
District 6 Landscape Architect
Florida Department of Transportation
Environmental Management Office

PROJECT LIMITS

SR-9A/I-95 and SR-836/I-395 INTERCHANGE

•Miami Neighborhoods: Allapattah and Overtown

NORTHERN BOUNDARY- NW 17TH STREET

WESTERN BOUNDARY- SR-7/NW 7TH AVENUE

EASTERN BOUNDARY- NW 3RD AVENUE

SOUTHERN BOUNDARY- NW 8TH STREET



FDOT LANDSCAPE BEAUTIFICATION PROJECT
SR-9A/I-95 from NW 17th Street to NW 8th Street (SR-836/I-395 Interchange)

PROJECT INFORMATION

CONSTRUCTION BUDGET **Approximately \$1,850,000**

PROPOSED TREES/PALMS **3,175 (83% Native)**

PROPOSED SHRUBS **11,645 (64% Native)**

TOTAL EXOTIC INVASIVE REMOVALS **10 ACRES**



FDOT LANDSCAPE BEAUTIFICATION PROJECT
SR-9A/I-95 from NW 17th Street to NW 8th Street (SR-836/I-395 Interchange)

PROJECT SCOPE



ERADICATION PLAN- Invasive exotic plant species and trash removal



FDOT LANDSCAPE BEAUTIFICATION PROJECT
SR-9A/I-95 from NW 17th Street to NW 8th Street (SR-836/I-395 Interchange)

PROJECT SCOPE

LANDSCAPE PLAN

- Expressway Interchange-
 - Limited access right-of-way
 - Access ramps
 - Wetland plantings
 - Slope plantings
- Improving green infrastructure (water quality and air quality)
- Beautification of I-95 and connections to Dolphin Expressway and MacArthur Causeway
- Screening roadway from adjacent communities, schools and housing



FDOT LANDSCAPE BEAUTIFICATION PROJECT
SR-9A/I-95 from NW 17th Street to NW 8th Street (SR-836/I-395 Interchange)

EXISTING CONDITIONS



FDOT LANDSCAPE BEAUTIFICATION PROJECT
SR-9A/I-95 from NW 17th Street to NW 8th Street (SR-836/I-395 Interchange)

LANDSCAPE PLAN



EXISTING CONDITIONS “V”

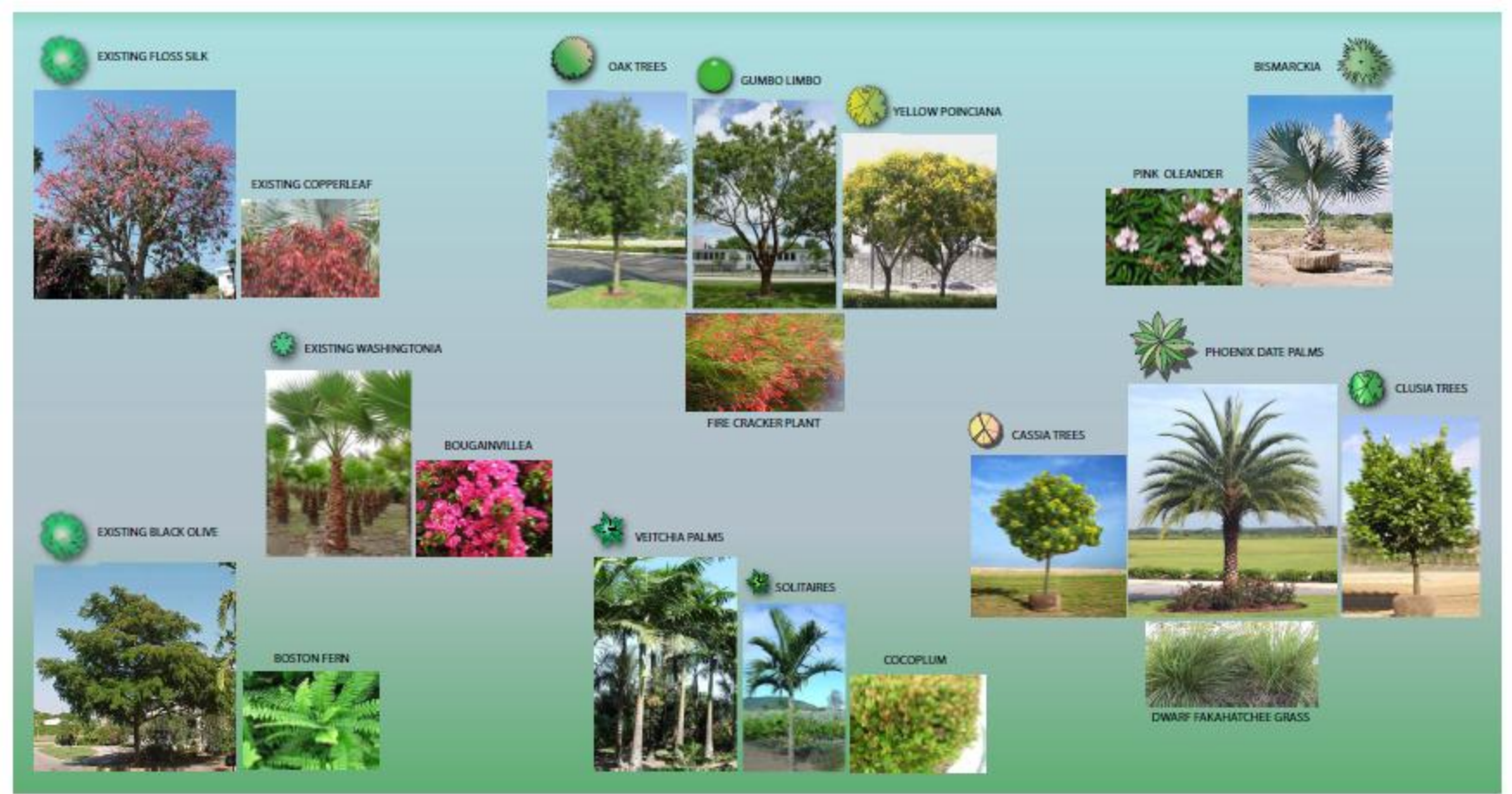


FDOT LANDSCAPE BEAUTIFICATION PROJECT
SR-9A/I-95 from NW 17th Street to NW 8th Street (SR-836/I-395 Interchange)

“V” AREA



PLANT PALETTE "V"

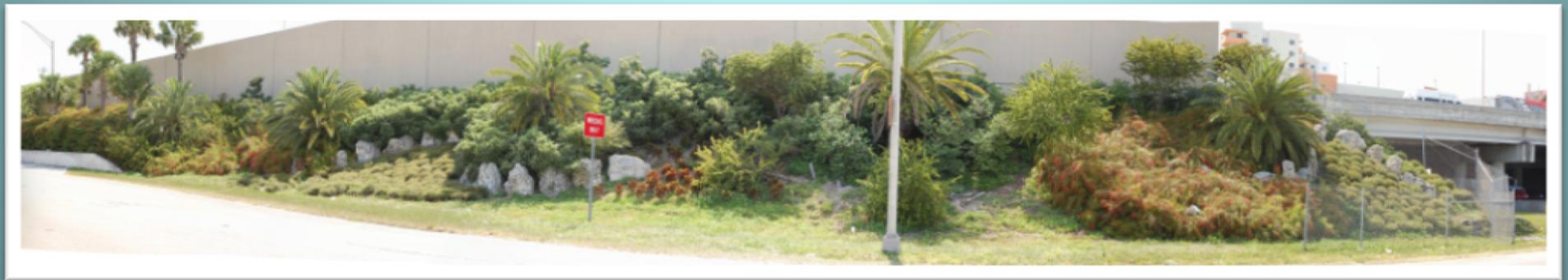


DESIGN & CONSTRUCTION SCHEDULE

DESIGN COMPLETE November 2011

CONSTRUCTION START DATE August 2012

CONSTRUCTION DURATION 250 Days (April 2013)



FDOT LANDSCAPE BEAUTIFICATION PROJECT
SR-9A/I-95 from NW 17th Street to NW 8th Street (SR-836/I-395 Interchange)

Million Tree Miami

FDOT Shade Tree Installations Since 2006-
(I-95, SR-826, SR-5 and SR-7)

TOTAL 20,729



FDOT LANDSCAPE BEAUTIFICATION PROJECT
SR-9A/I-95 from NW 17th Street to NW 8th Street (SR-836/I-395 Interchange)