



**Miami-Dade Community Image
Advisory Board**
Wednesday, September 24, 2014

Jose M. Gonzalez
Senior Vice President
Florida East Coast Industries

[ALL ABOARD FLORIDA]

Connecting Florida's key cities in new ways...
to spark social and economic opportunities

ORLANDO

WEST PALM BEACH

FORT LAUDERDALE

MIAMI

[2] NEW BUSINESSES

1. Express, intercity passenger rail service

Connecting Florida's two most dynamic regions in under 3 hours



2. Transit oriented development

Transforming existing downtown centers with 4 million sq ft of new development



[TRENDS]

Businesses align with lifestyle choices of the future

- ▶ **City preference**
More people are moving to urban areas to live, work and play
- ▶ **Mobility preference**
Reduced dependence on cars vs. increased use of public transportation



[MIAMI TO ORLANDO]

1. One of the nation's most important corridors

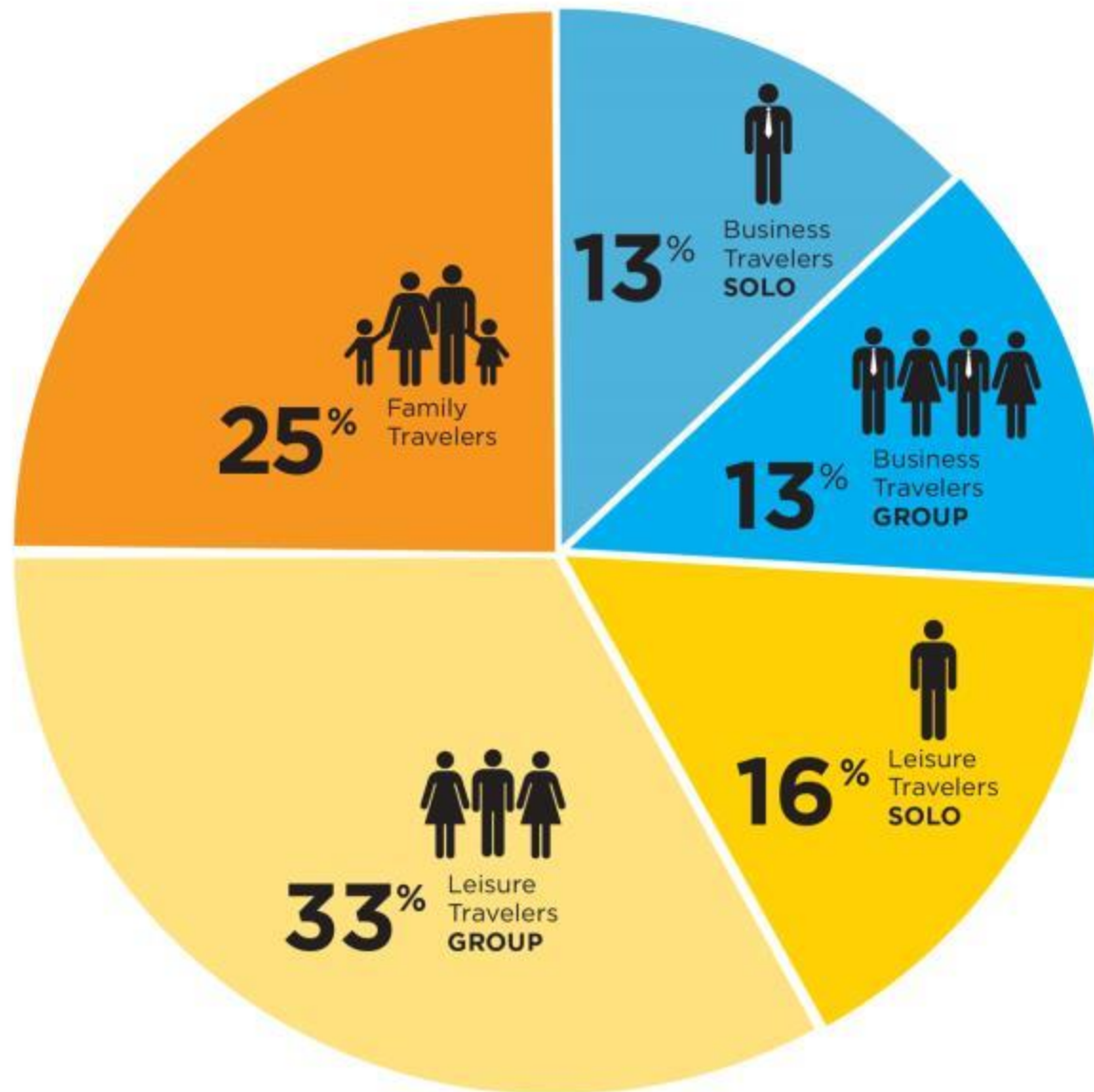
2. Economic Vibrancy
Home to half of Florida's businesses

3. Significant Tourism
Orlando -
52M visitors/year

South Florida -
40M visitors/year



[LARGE AND DIVERSE MARKET]



**EXISTING TRANSPORTATION OPTIONS
BETWEEN CITIES ARE**

[U N R E L I A B L E]

[E X P E N S I V E]

[I N E F F I C I E N T]

[NEW & BETTER TRANSPORTATION OPTION]

[QUICK]

[CONVENIENT]

[COMPETITIVE]

[COMFORTABLE]

[CONNECTED]

[CURRENT]



[SIGNIFICANT UPGRADES]

Continuously welded track

Upgraded grade crossing infrastructure to meet **highest** applicable **FRA** and **FDOT** requirements

Funding in place for **quiet** zones in **Broward** and **Palm Beach** counties

Initial investment lays groundwork for **commuter rail**



[FACT vs FICTION]

- ▶ **No profitable passenger rail systems exist**
- ▶ **Trojan Horse to run more freight**
- ▶ **Public investment**
- ▶ **Traffic congestion**
- ▶ **TIGER grant to connect South Florida Rail Corridor and FEC Corridor**

[TRANSFORMATIVE]

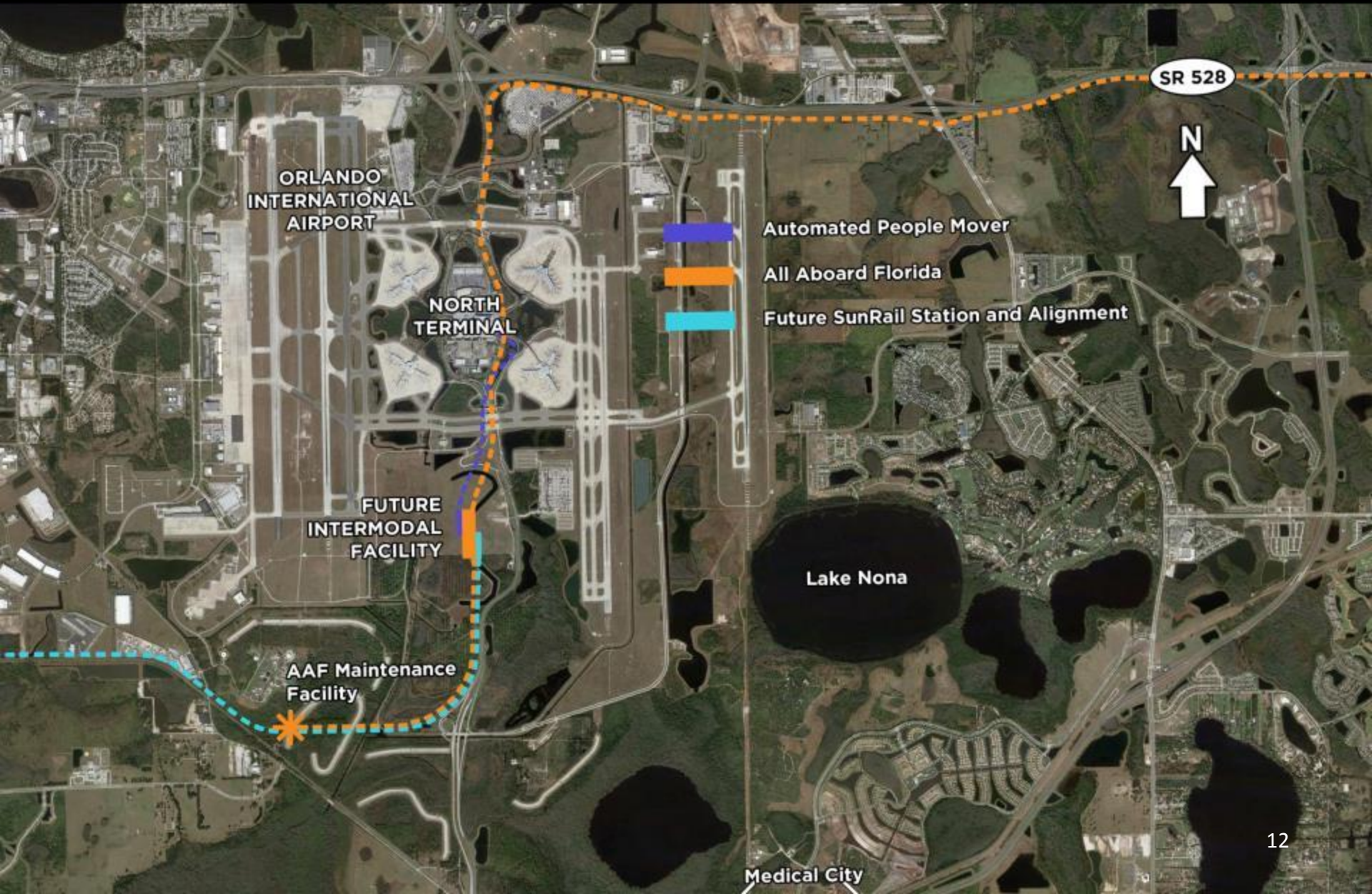
**Infrastructure establishes
vibrant downtowns**

**Strategic locations
proximate to key
destinations**



ORLANDO

[MULTIMODAL STATION]



ORLANDO

[MULTIMODAL STATION]



WEST PALM BEACH

[CONNECTING TWO MAJOR DOWNTOWN DESTINATIONS]



WEST PALM BEACH

[AERIAL VIEW]



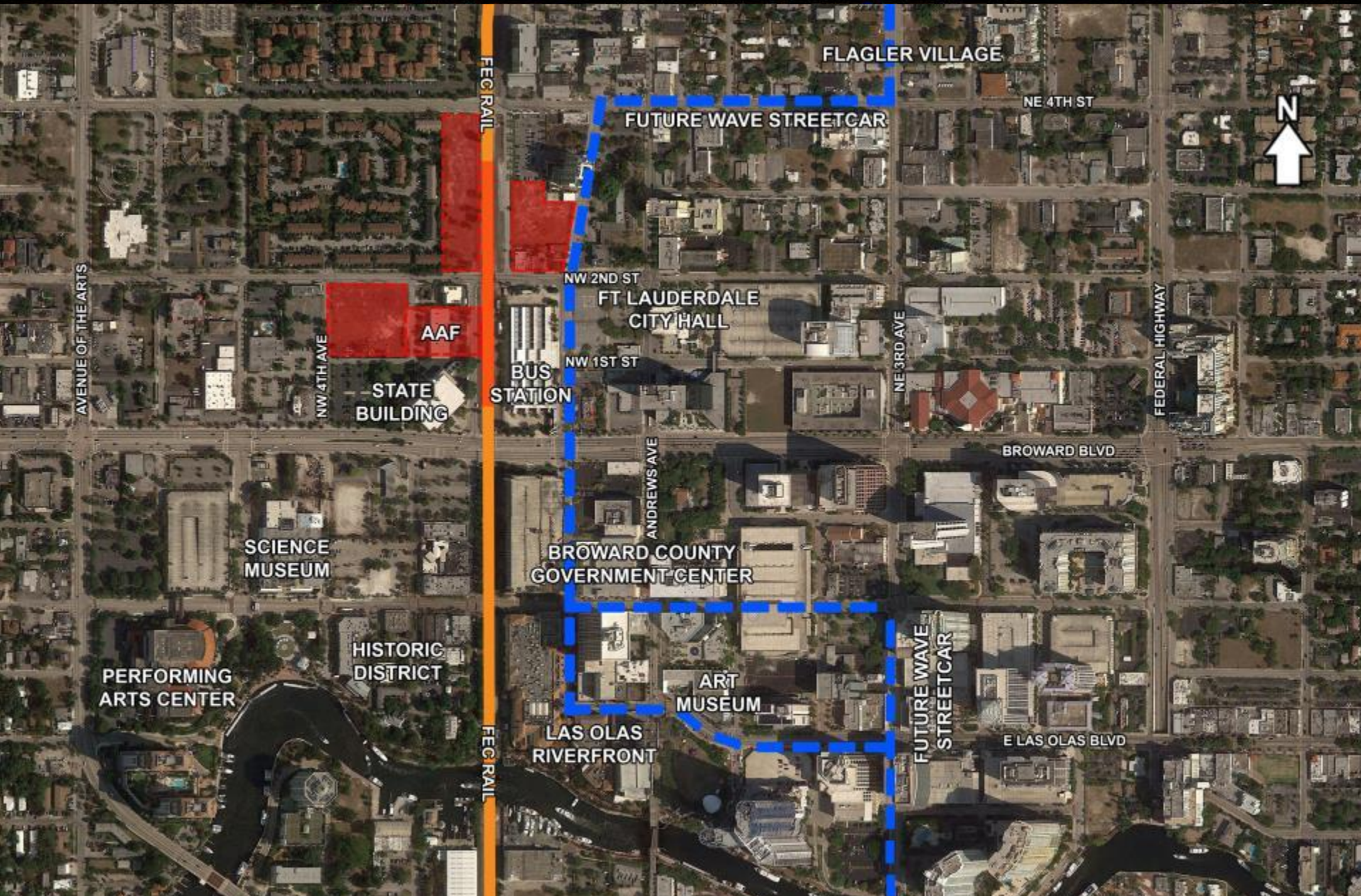
WEST PALM BEACH

[STATION ENTRANCE]



FORT LAUDERDALE

[REVITALIZING THE CITY'S GATEWAY]



FORT LAUDERDALE

[4.8 ACRE GATEWAY TO THE CITY]



FORT LAUDERDALE

[STATION ENTRANCE]



MIAMI

[INTEGRATING TRANSPORTATION]

INTO 11-ACRE MULTIMODAL HUB



[AERIAL VIEW]



MIAMI

[INTO 11-ACRE MULTIMODAL HUB]



[ECONOMIC ENGINE]

- ▶ **Private investment of \$2.3 billion**
- ▶ **\$6.4 billion in direct economic impact added to Florida's economy over the next eight years**
- ▶ **\$3.5 billion added to Florida's GDP through 2021**
- ▶ **More than ten thousand jobs created on average per year during rail line construction**
- ▶ **Vital to regional and statewide tourism**

[ALL ABOARD FLORIDA]

www.allaboardflorida.com

f facebook.com/AllAboardFlorida

🐦 twitter.com/AllAboardFla