

## **OUR MISSION**

Restore threatened forest ecosystems and inspire people to value and protect urban and wildland forests.



Planted nearly

**48 Million Trees**

In more than 1000 Restoration Projects  
In All 50 States and 44 Countries

# Washington, DC

## Regional Analysis



*Landsat MSS 1973 80 Meter Pixel Resolution*

Key: % Tree Cover



*Landsat TM 1997 30 Meter Pixel Resolution*



AMERICAN FORESTS





# Community ReLeaf

Building local capacity for  
long-term management

1. Urban Tree Canopy Analysis
2. Strategic Restoration
3. Outreach / Policy Support

**Asbury Park, NJ**

**Atlanta, GA**

**Austin, TX**

**Chicago, IL**

**Detroit, MI**

**Hartford, CT**

**Miami, FL**

**Nashville, TN**

**Oakland, CA**

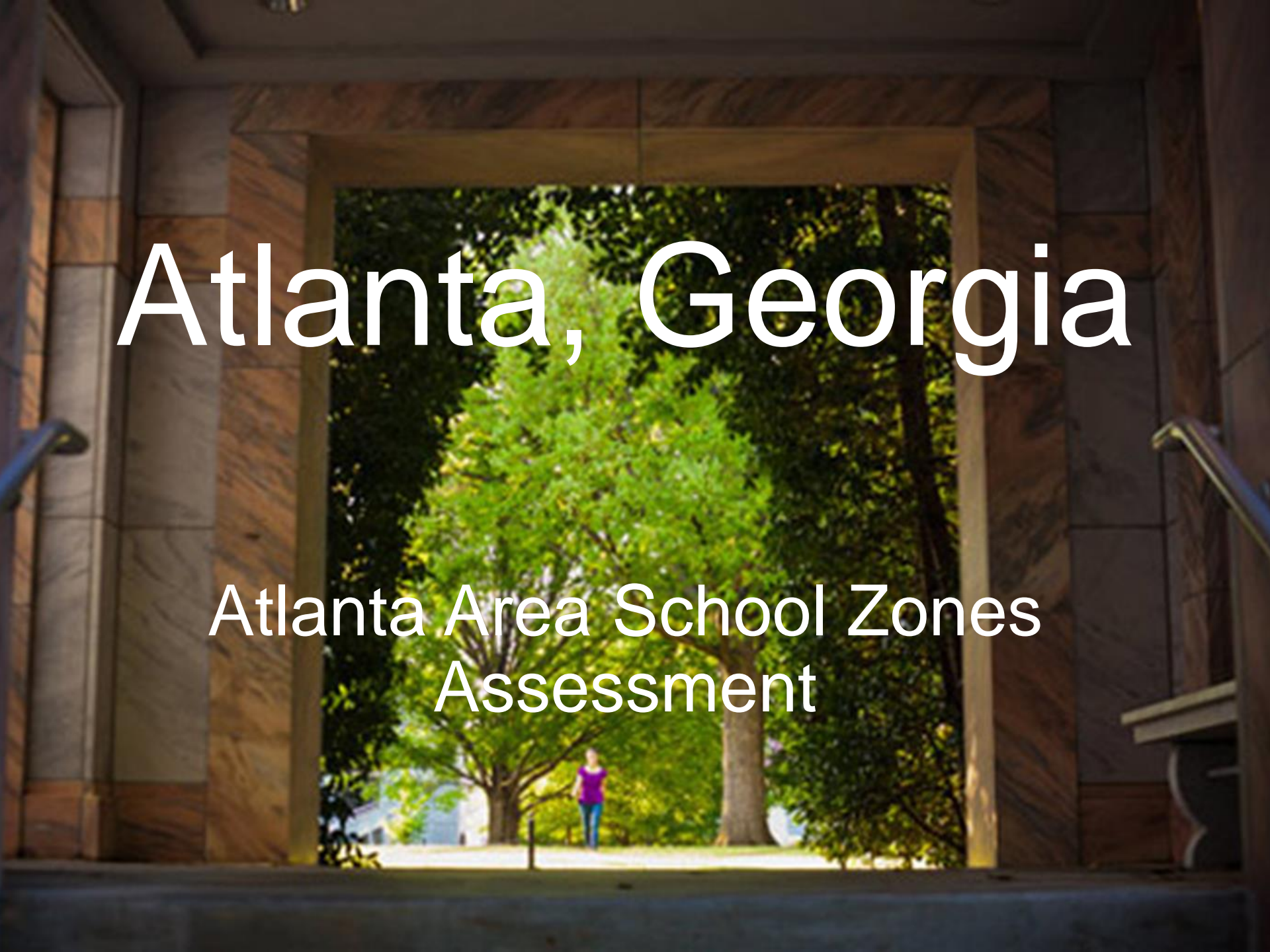
**Pasadena, CA**

**Washington, DC**



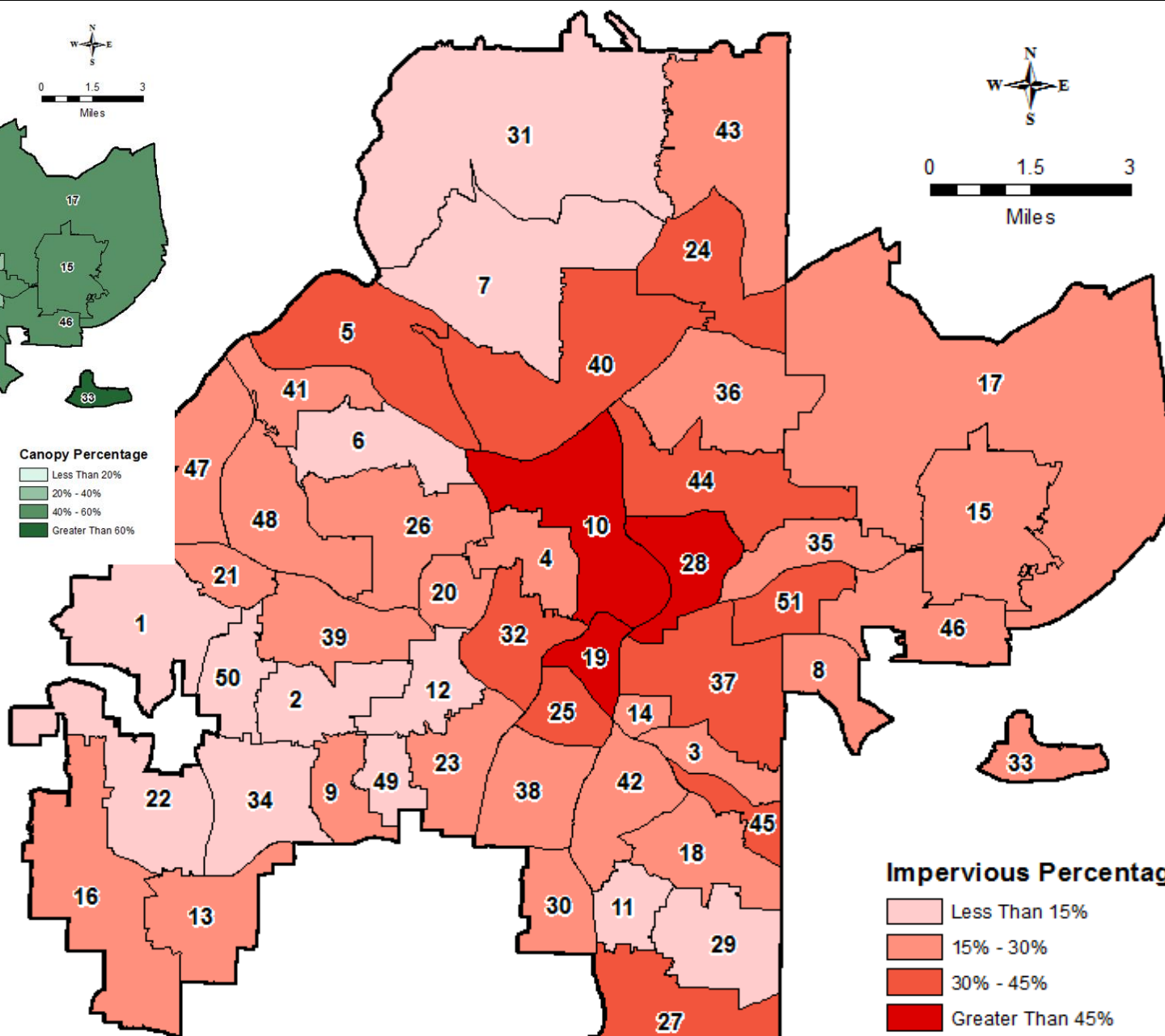
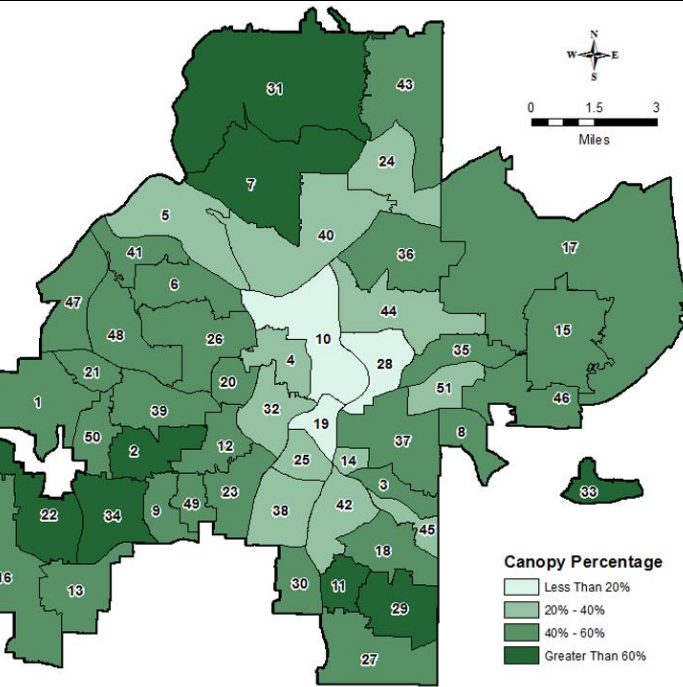
# Atlanta, Georgia

## Atlanta Area School Zones Assessment



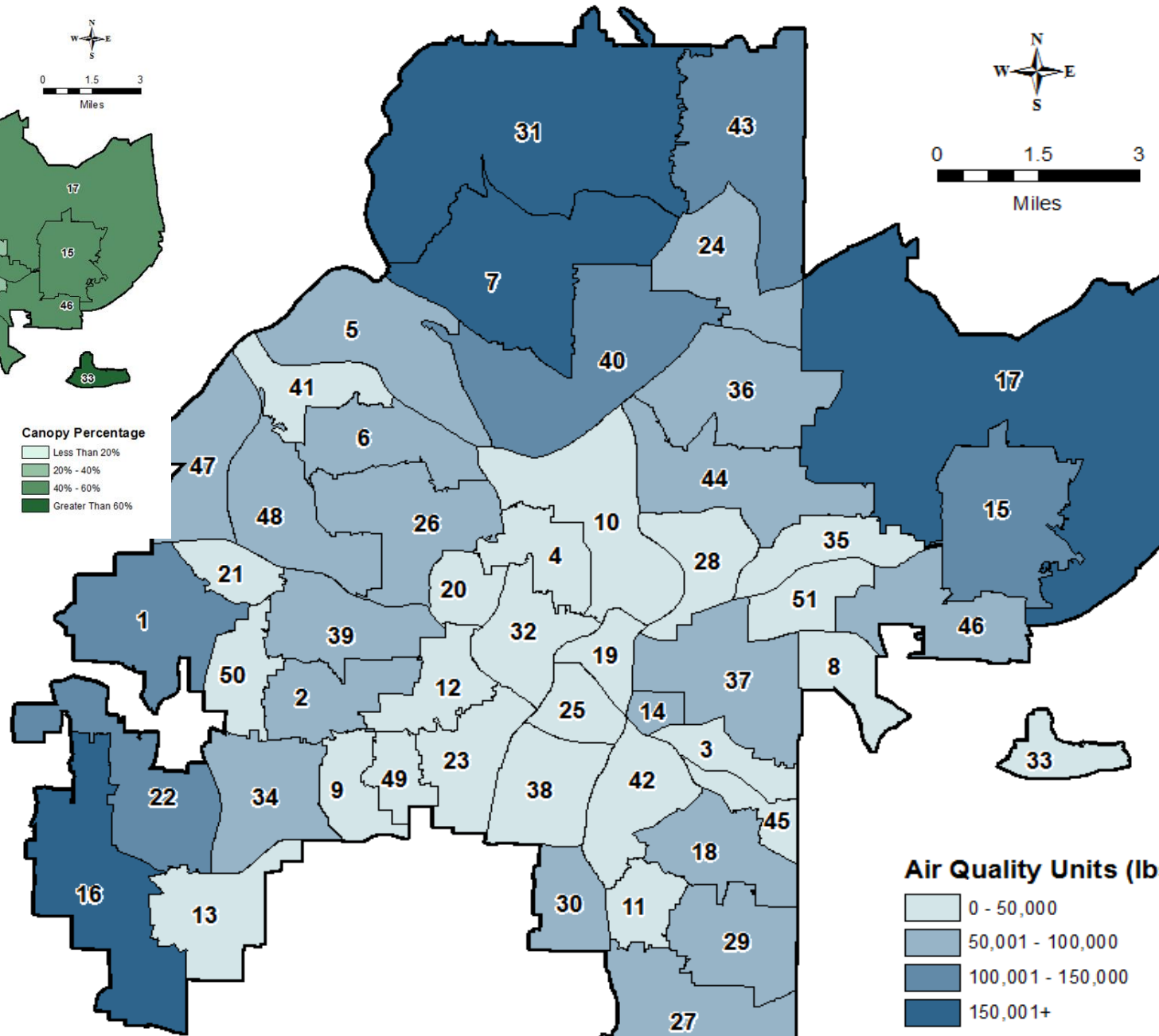
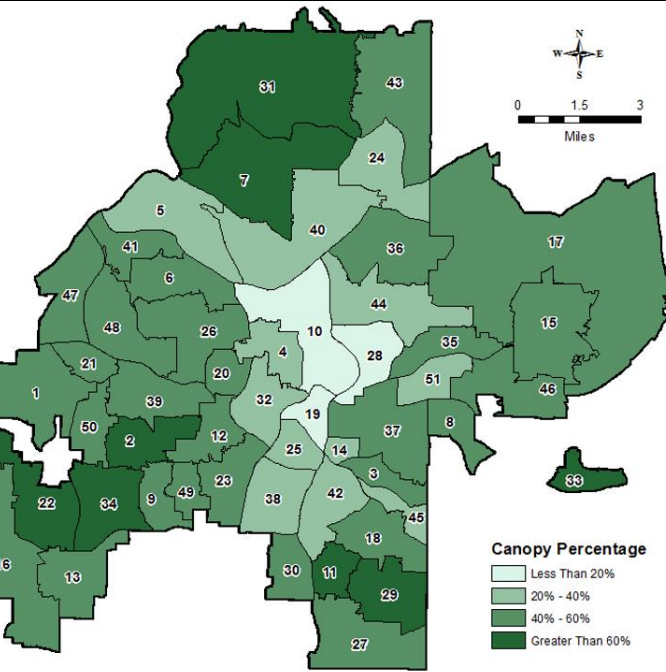


# Tree Canopy Relation to Impervious

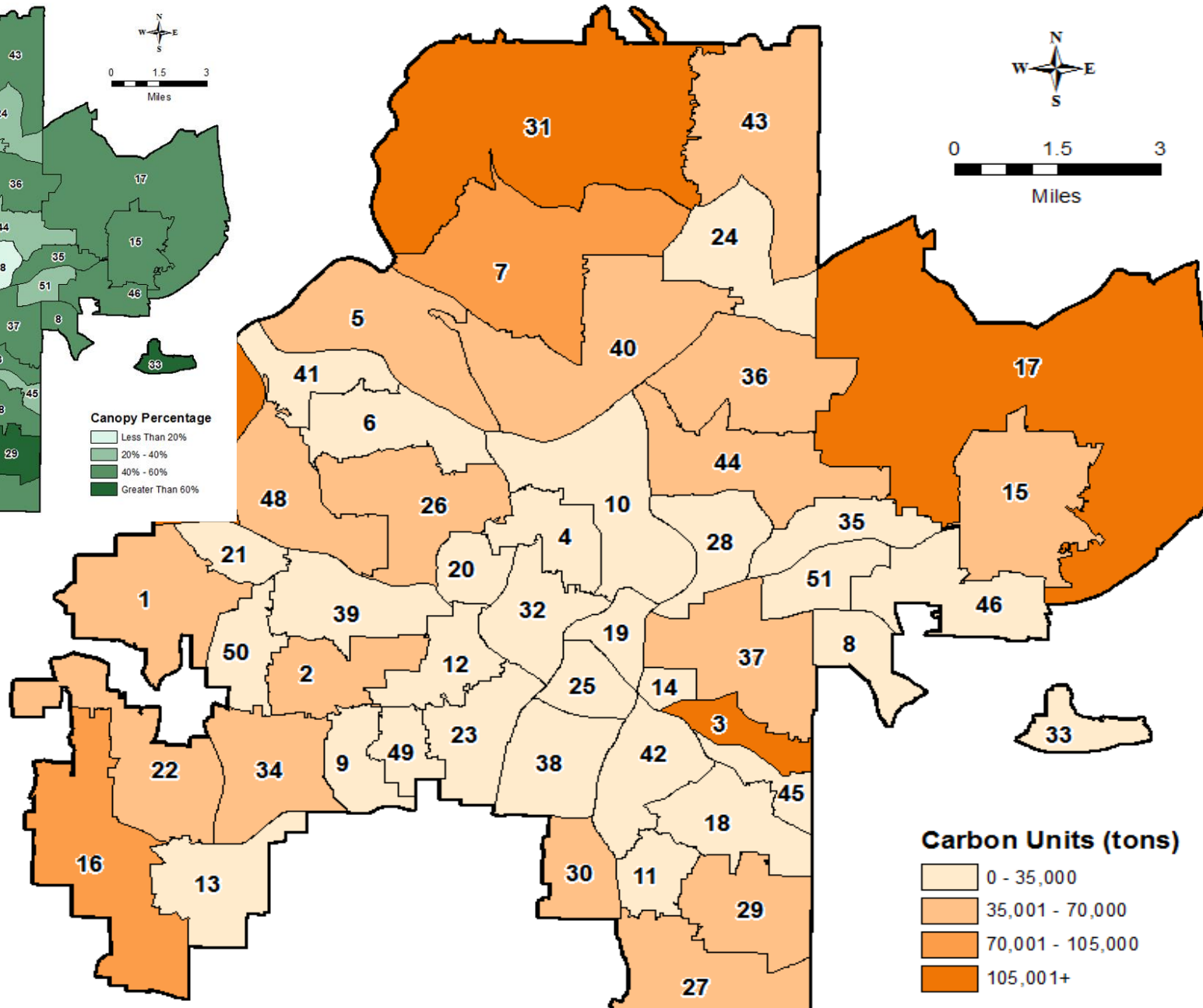
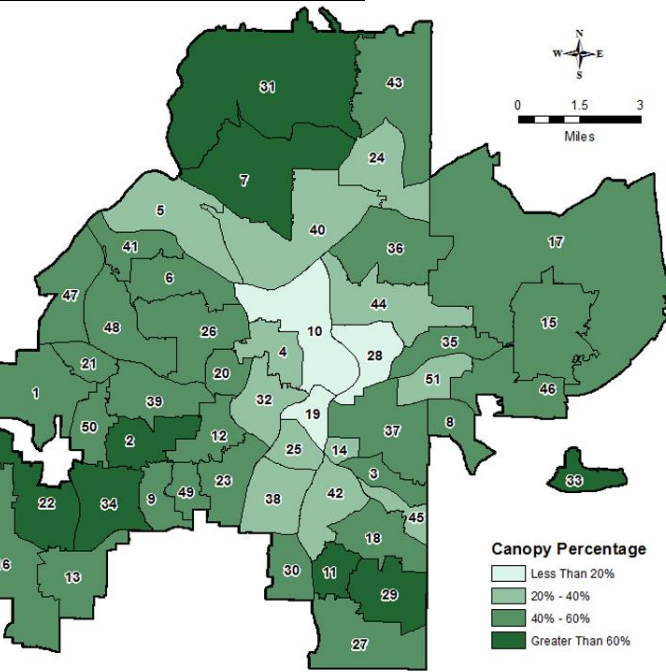




# Tree Canopy Relation to Air Quality



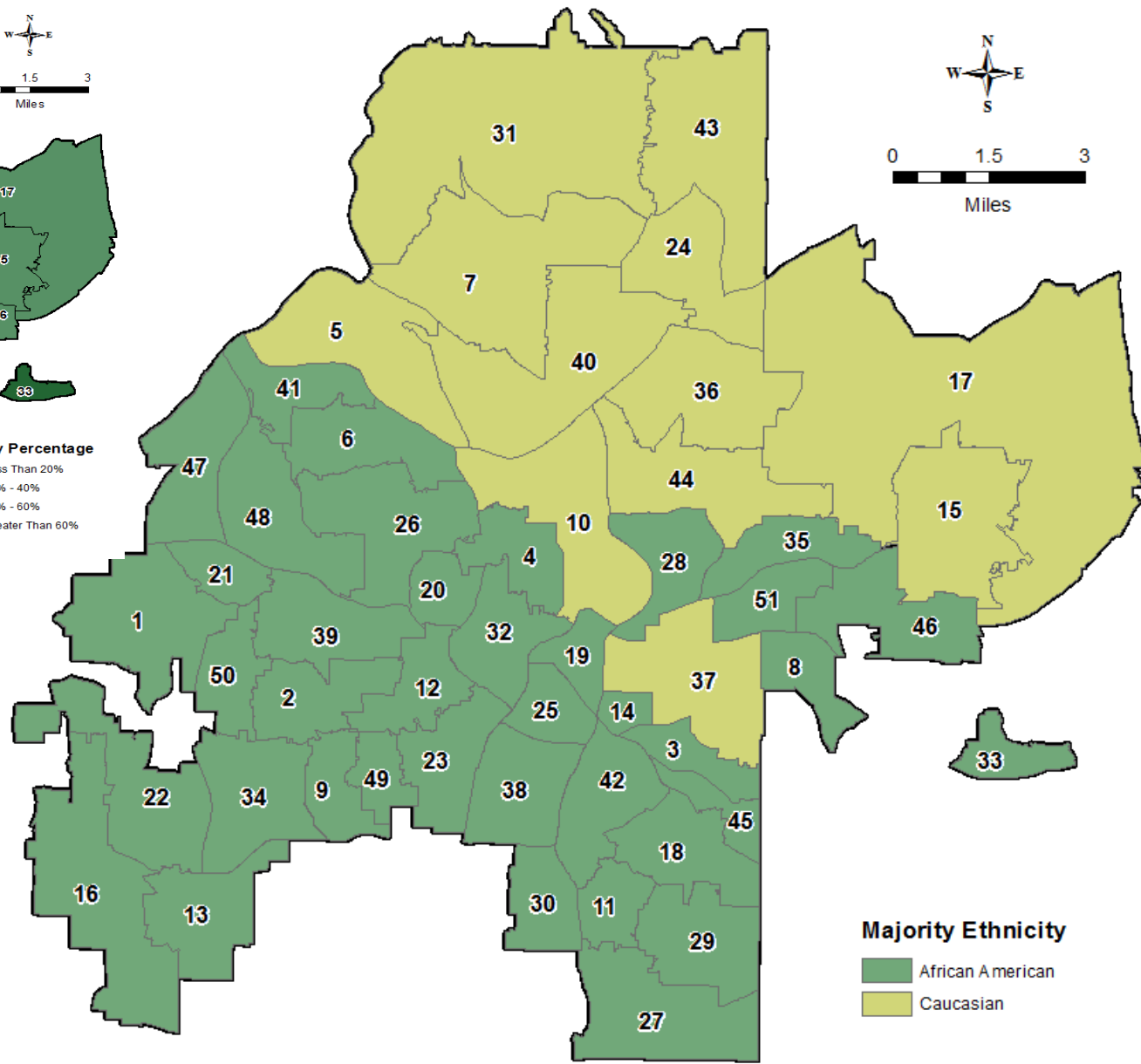
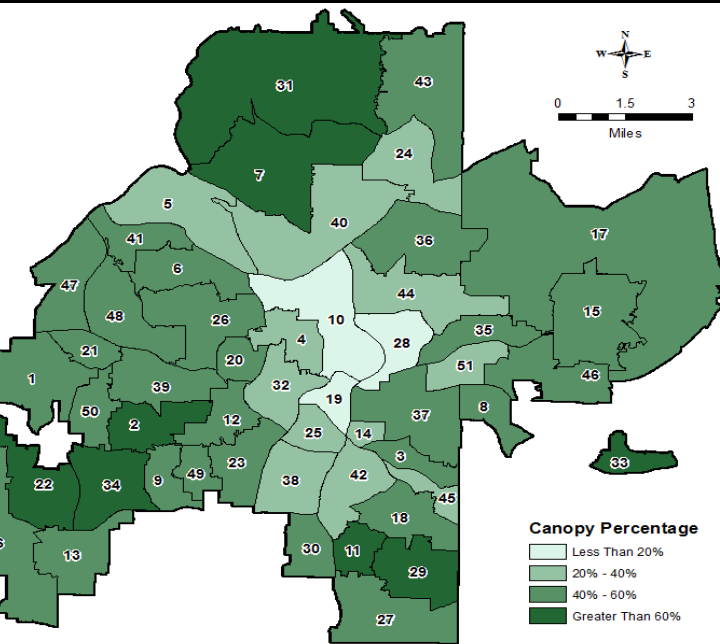
# Carbon Reduction Benefits of Canopy



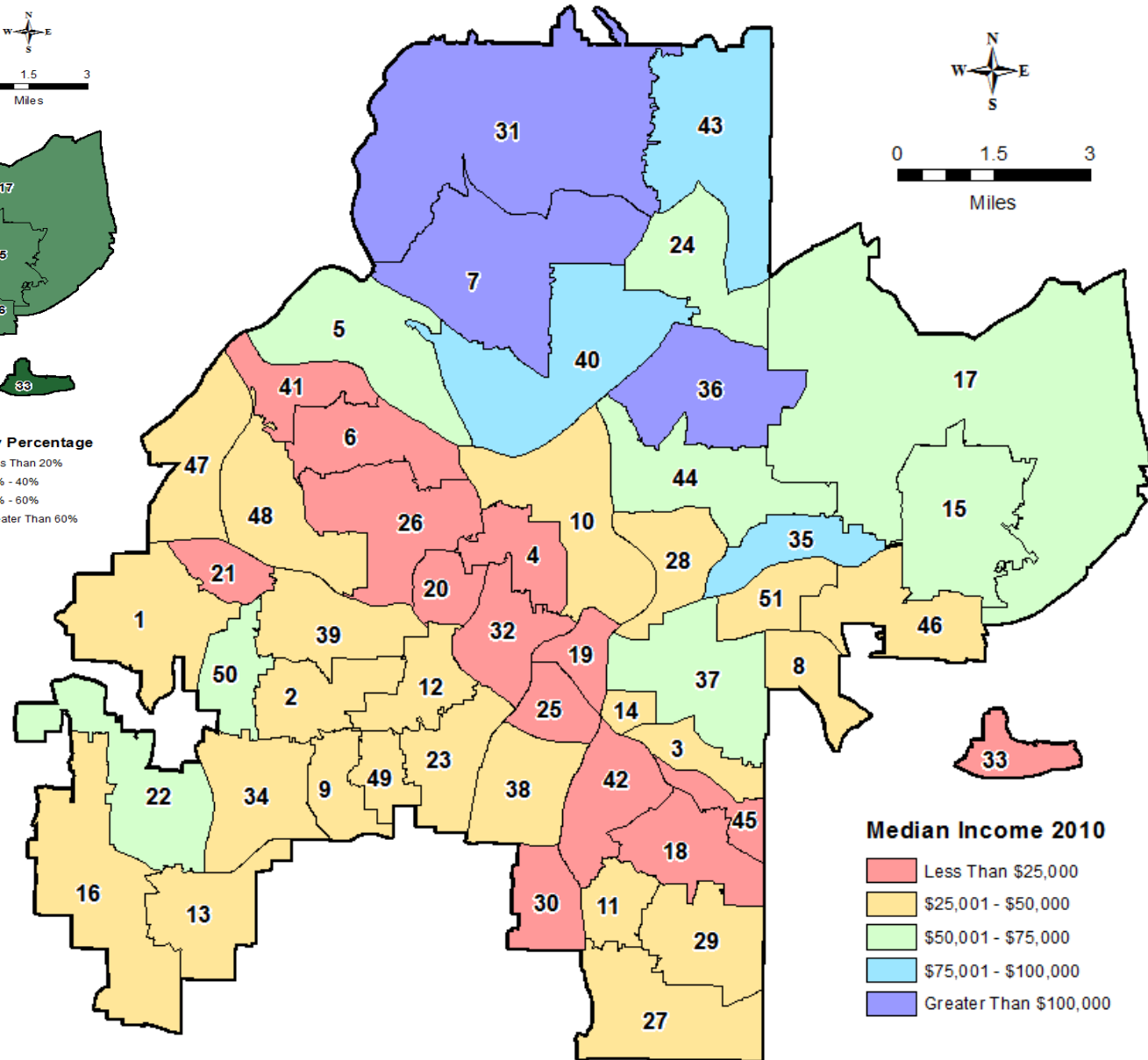
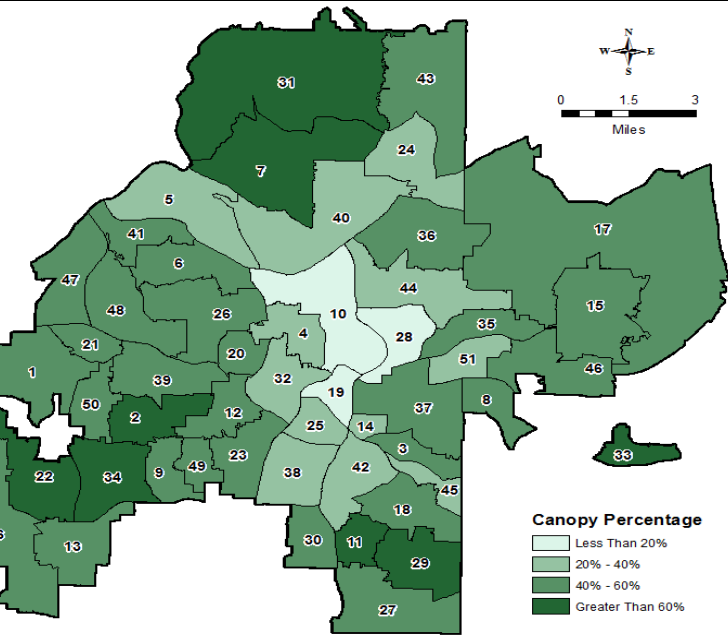
0 – 35,000  
tons

105,000 +  
tons

# No Canopy Relation to Ethnicity



# Canopy Relation to Income

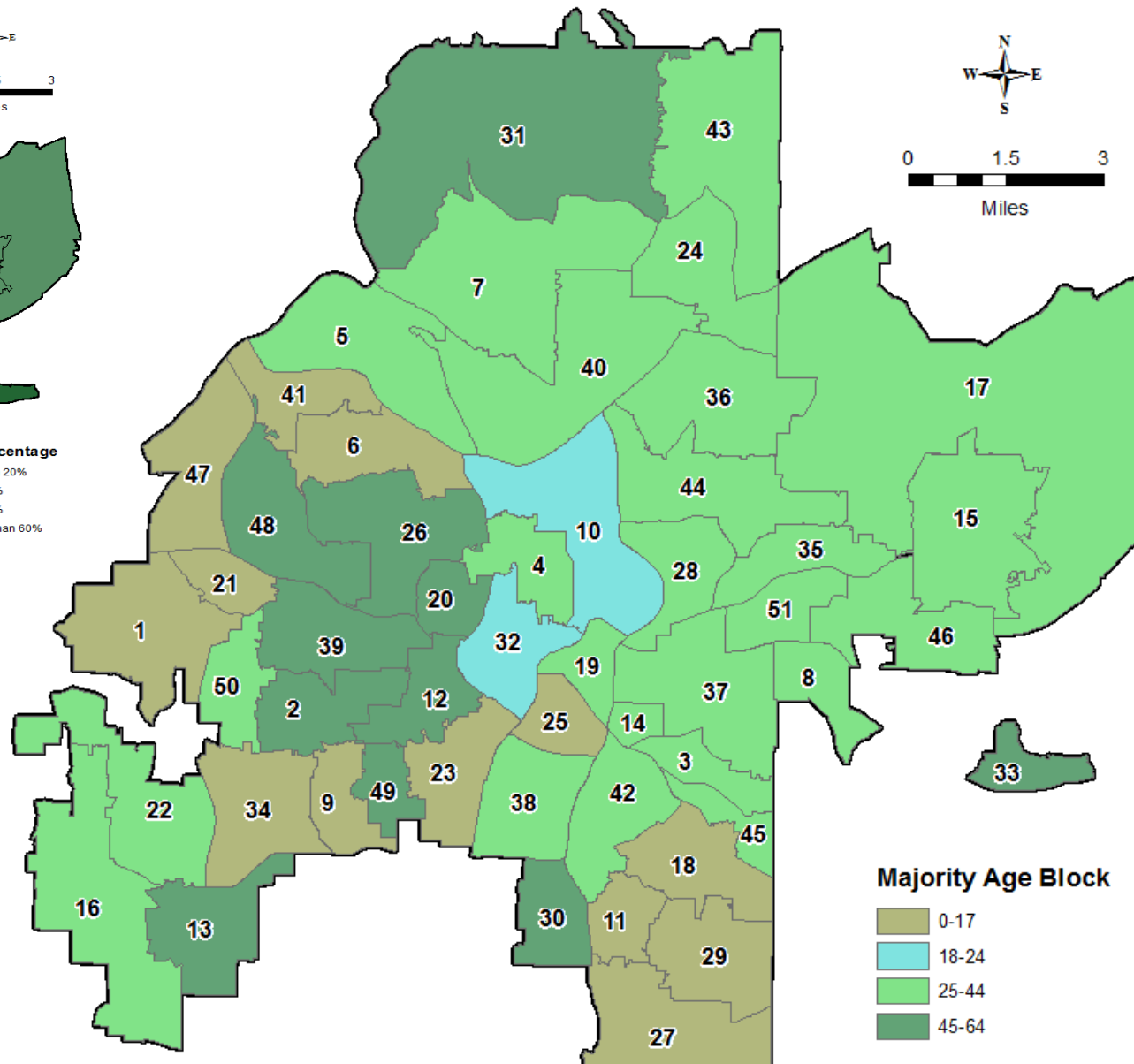
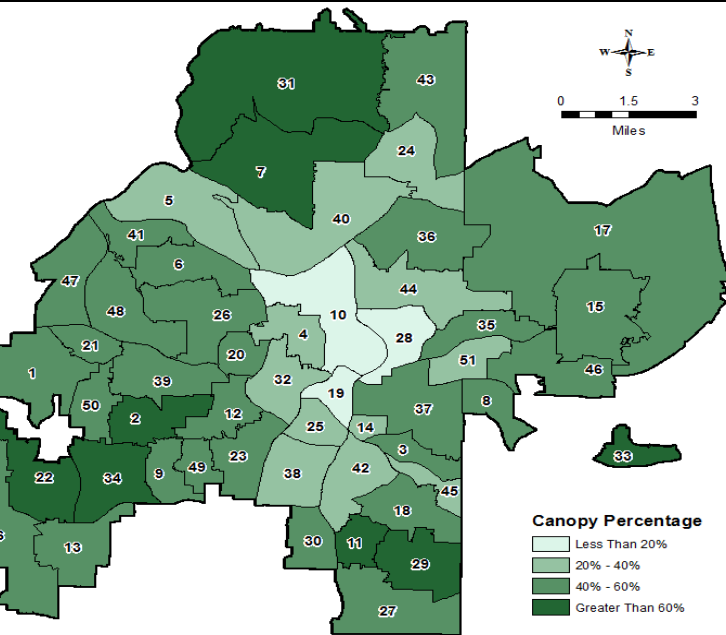


Avg. Highest Canopy  
\$57,580

Avg. Lowest Canopy  
\$28,546



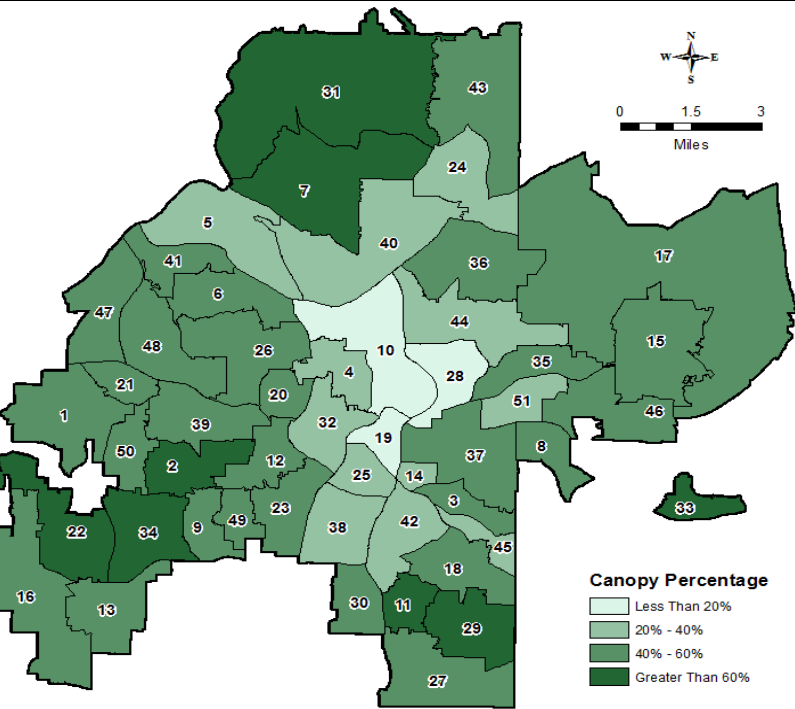
# Canopy Relation to Majority Age



4/10 highest tree canopy  
45-64 years old

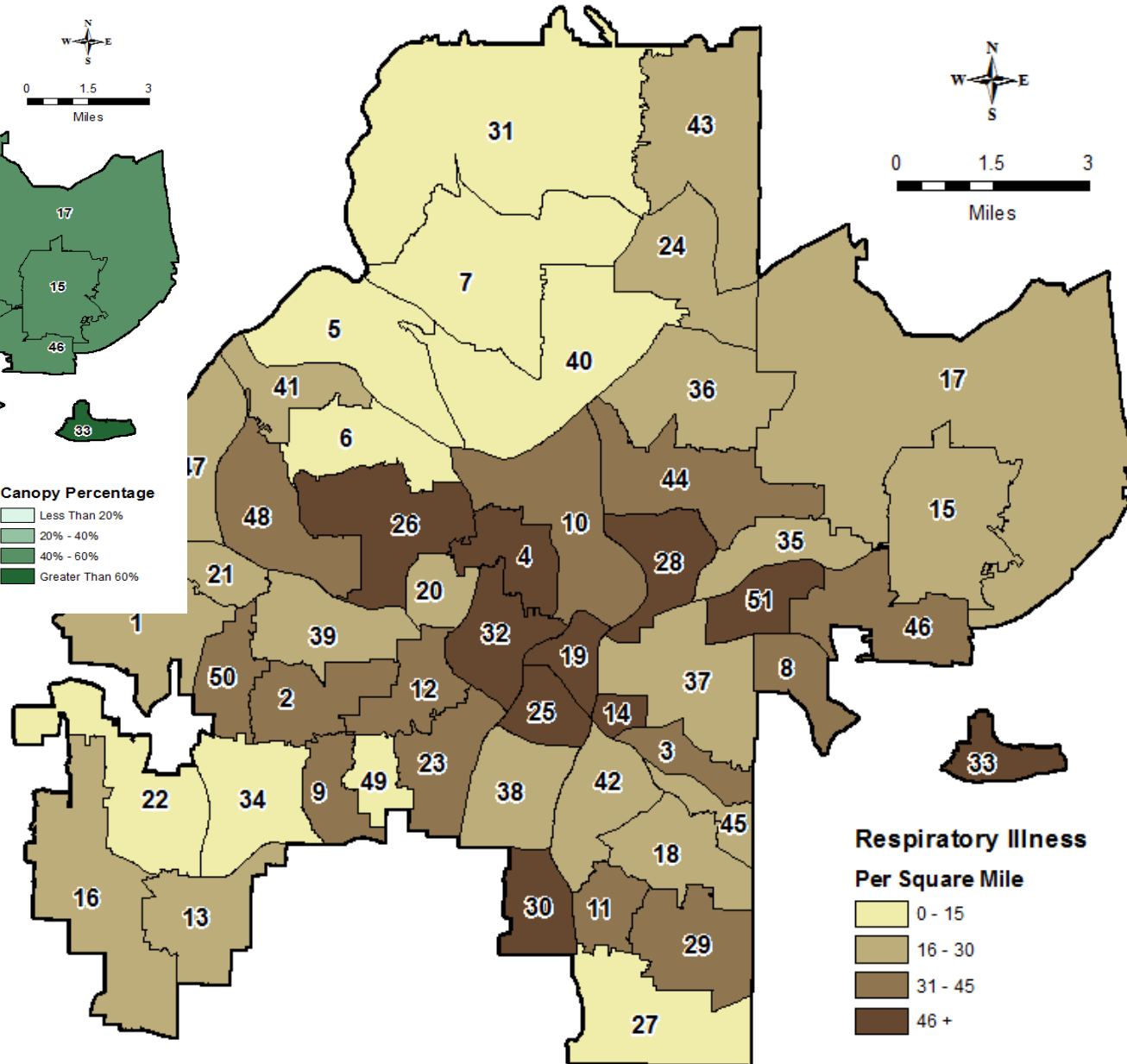
7/10 lowest tree canopy  
25-44 years old

# Canopy Relation to Respiratory Illness

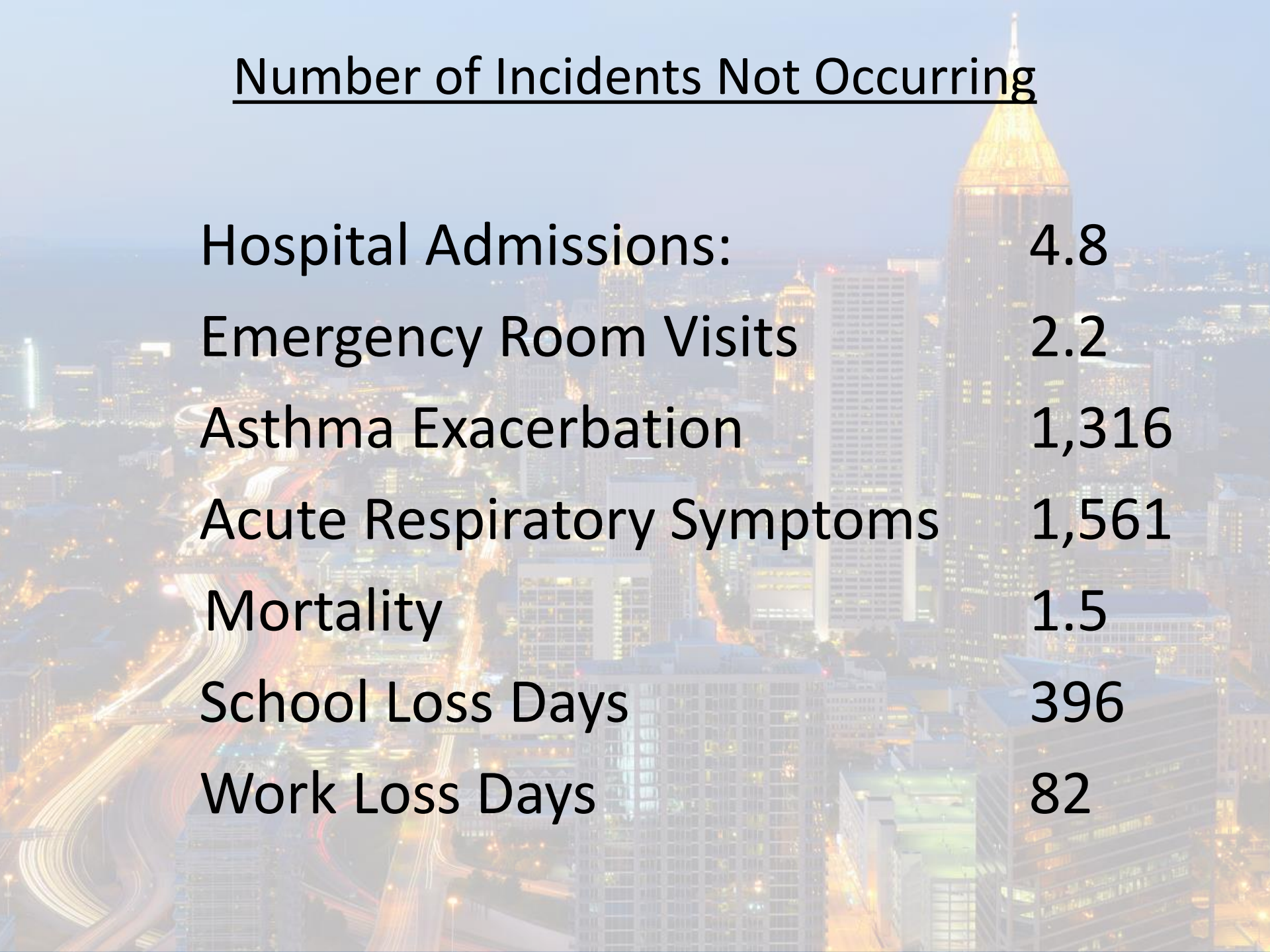


Number of Annual  
Incidents Not Occurring:  
3,386

Economic Value:  
\$12.6 million / year



## Number of Incidents Not Occurring



|                            |       |
|----------------------------|-------|
| Hospital Admissions:       | 4.8   |
| Emergency Room Visits      | 2.2   |
| Asthma Exacerbation        | 1,316 |
| Acute Respiratory Symptoms | 1,561 |
| Mortality                  | 1.5   |
| School Loss Days           | 396   |
| Work Loss Days             | 82    |

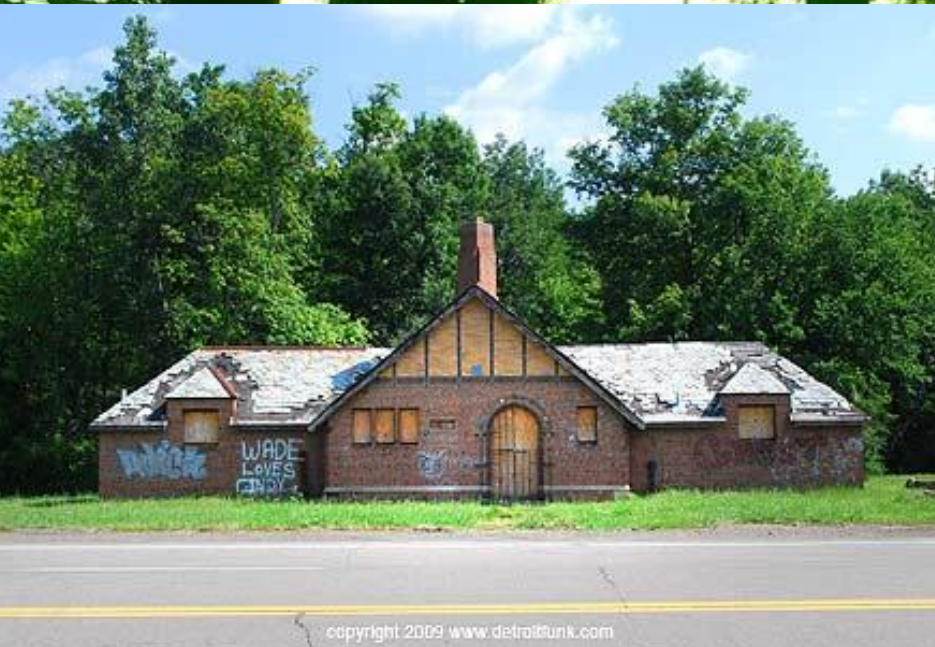
# Stormwater Management

Increase canopy from 23% to 35%,  
Decrease runoff by 357,000 cubic feet

| Planting Interval | Year 5     | Year 10    | Year 15    | Year 20     | Year 25     | Year 30     | Year 35     | Year 40     |
|-------------------|------------|------------|------------|-------------|-------------|-------------|-------------|-------------|
| Year 5 Planting   | -\$376,688 | \$340,371  | \$614,039  | \$954,488   | \$1,268,138 | \$1,616,685 | \$1,794,008 | \$2,162,017 |
| Year 10 Planting  | -          | -\$376,688 | \$340,371  | \$614,039   | \$954,488   | \$1,268,138 | \$1,616,685 | \$1,794,008 |
| Year 15 Planting  | -          | -          | -\$376,688 | \$340,371   | \$614,039   | \$954,488   | \$1,268,138 | \$1,616,685 |
| Year 20 Planting  | -          | -          | -          | -\$376,688  | \$340,371   | \$614,039   | \$954,488   | \$1,268,138 |
| Year 25 Planting  | -          | -          | -          | -           | -\$376,688  | \$340,371   | \$614,039   | \$954,488   |
| Year 30 Planting  | -          | -          | -          | -           | -           | -\$376,688  | \$340,371   | \$614,039   |
| Year 35 Planting  | -          | -          | -          | -           | -           | -           | -\$376,688  | \$340,371   |
| Year 40 Planting  | -          | -          | -          | -           | -           | -           | -           | -\$376,688  |
| TOTAL             | -\$376,688 | -\$36,317  | \$577,722  | \$1,532,210 | \$2,800,349 | \$4,417,034 | \$6,211,042 | \$8,373,059 |



# Detroit



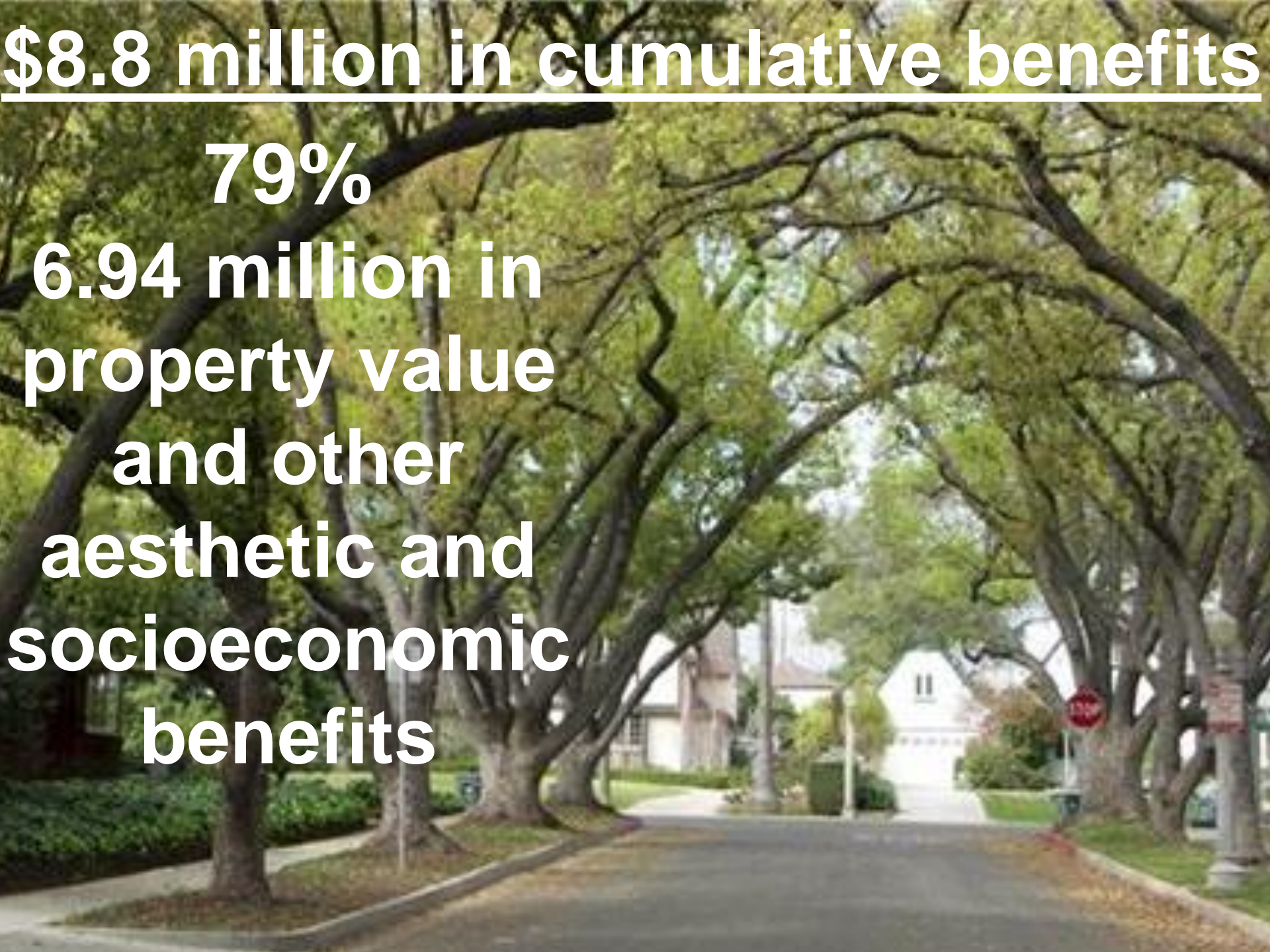
1 200 acre Rouge Park



**\$8.8 million in cumulative benefits**

**79%**

**6.94 million in  
property value  
and other  
aesthetic and  
socioeconomic  
benefits**





For every \$1.00  
spent on  
street trees

Pasadena  
receives \$3.11  
in benefits





# Urban Restoration





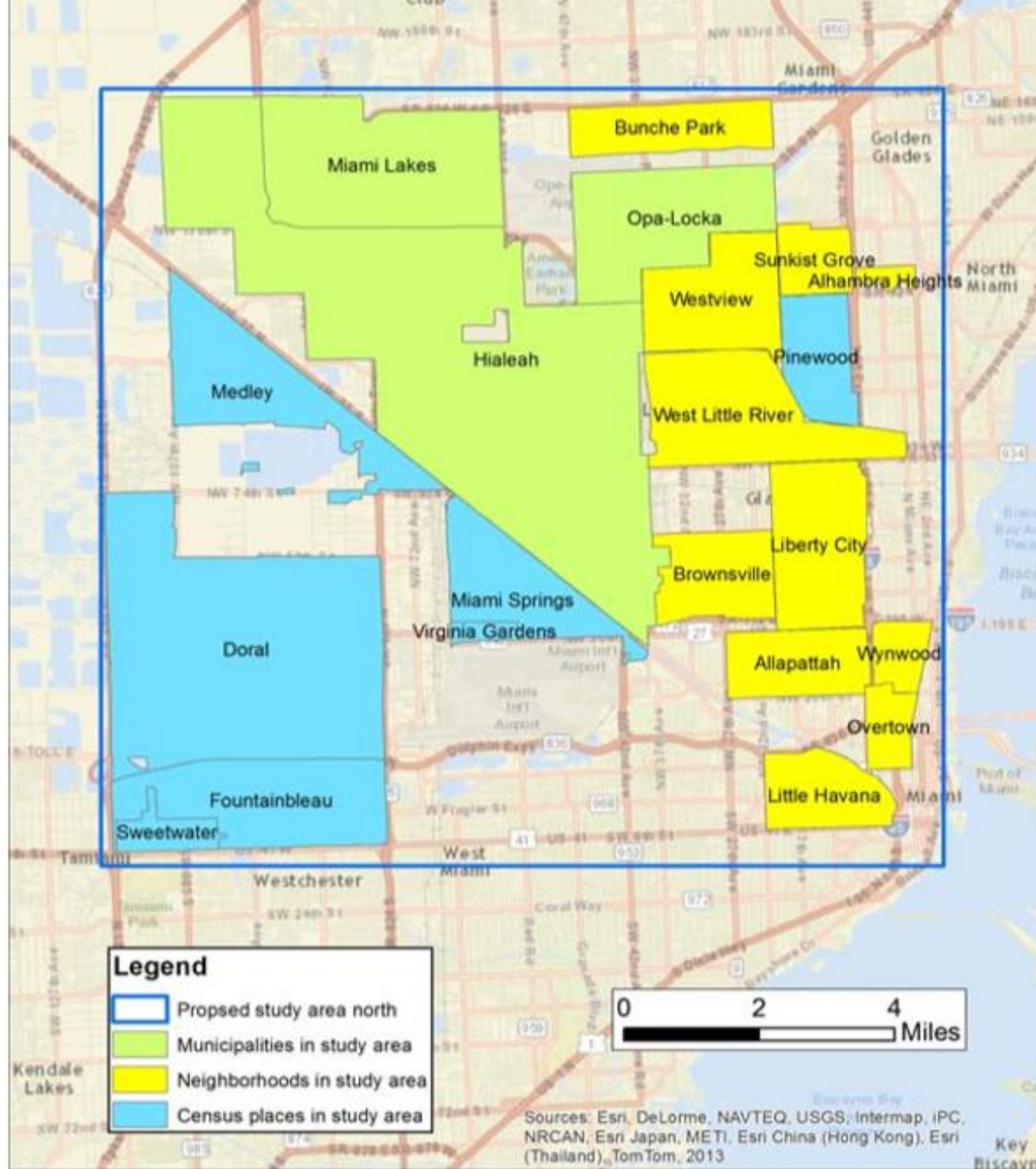
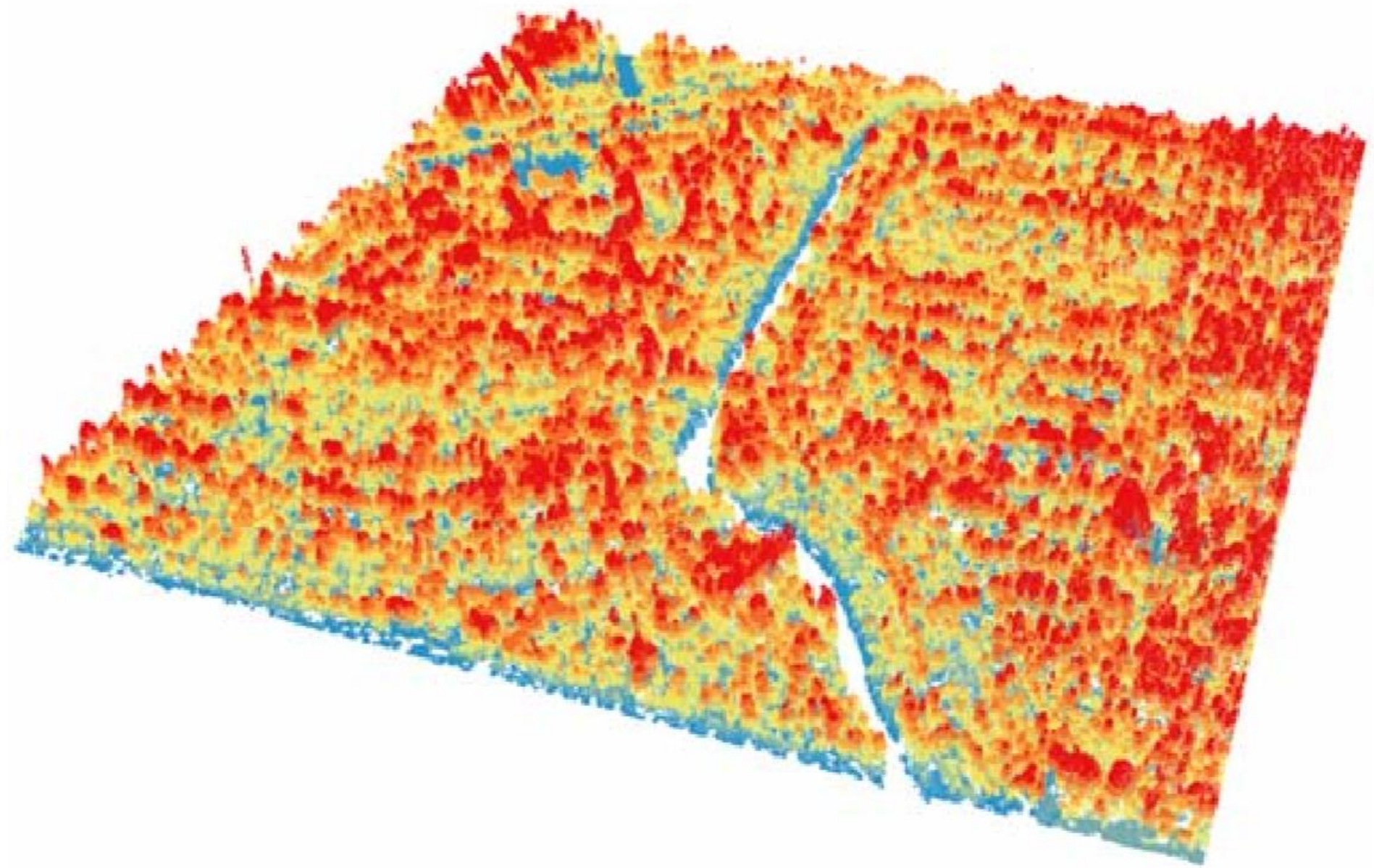


Figure 6: Neighborhoods, municipalities, and neighborhood places in the proposed study area





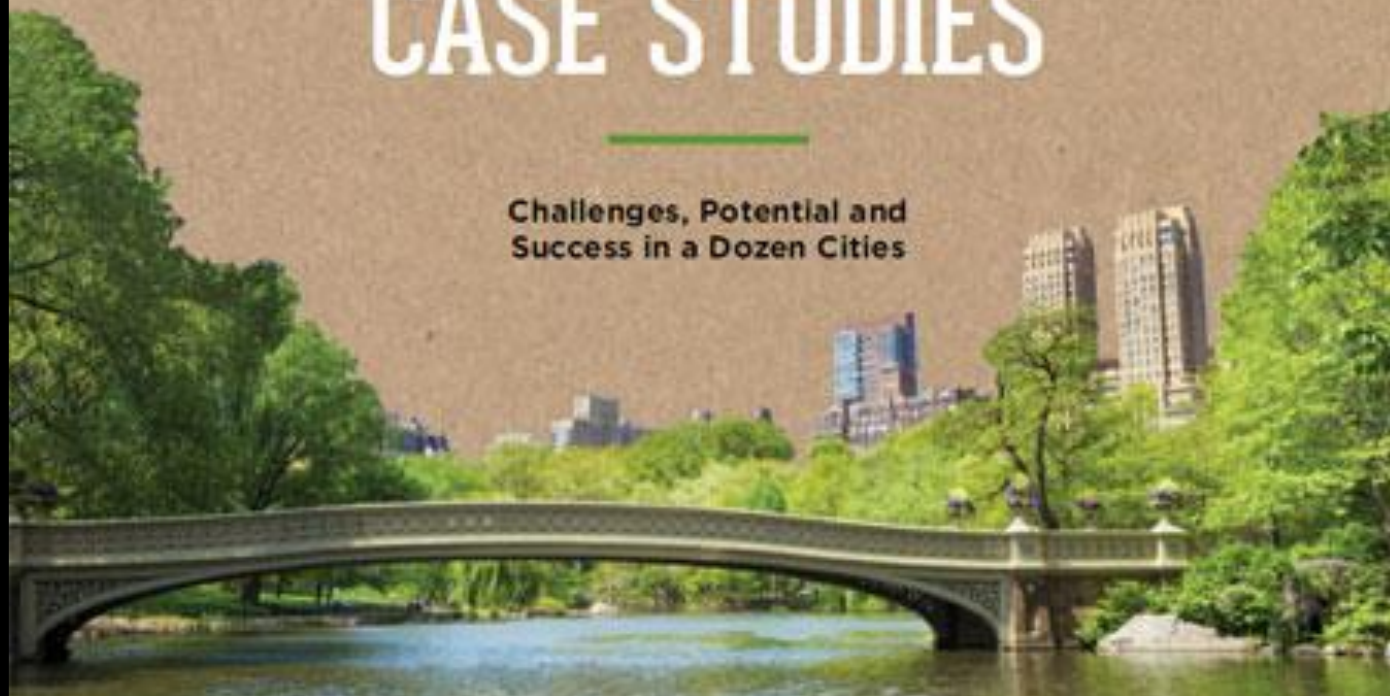


AMERICAN FORESTS

# URBAN FORESTS CASE STUDIES

---

**Challenges, Potential and  
Success in a Dozen Cities**



Ian Leahy  
Director of Urban Forest Programs  
202-370-4524  
[ileahy@americanforests.org](mailto:ileahy@americanforests.org)



AMERICAN FORESTS