

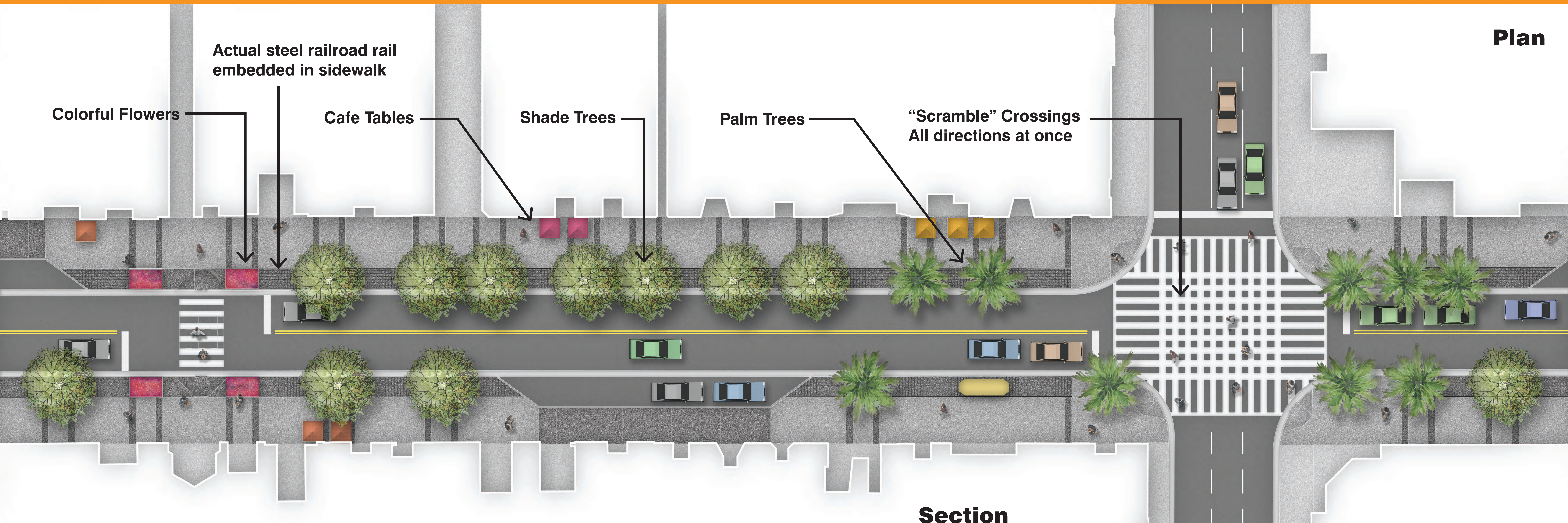
Scramble Crossing



Typical Streetscape



Mid-block Crossing



Section

Turning Flagler Street into a “Great Street”

- Replaces on-street parking with Valet Parking/Loading Zones to accommodate wider sidewalks for more pedestrian traffic and more sidewalk cafes.
- Provides quality, large shade trees, planted with most current practices and technology to assure large tree growth without sacrificing walkable space, which will provide shade and lower the temperature of the corridor for pedestrians.
- A complete re-design of the street drainage, to fix current issues, including the inverted sidewalks.
- Provide a sidewalk that is made from readily available materials arranged in a pattern that will allow for less noticeable repairs when required.
- Opportunities to educate the visitor’s of the streets rich history.
- Unique and iconic “Crossing Gates” to close sections of the street for regular Street Fairs and Events.



Miami 21 Plan





Site Furnishing

- seating placed in groupings of 3 by Valet parking spaces
- trash and bike racks placed in convenient locations with at least 1/block on each side
- bollards placed at mid-block crossings

Crossing Gate

- Gate in down position can close sections of the street for festivals and events
- Gate in up position serves as a gateway or beacon adding to the character of the streetscape
- Gates place at the avenue intersections
- Signage rotates in up or down positions and is designed to relate to the history of the street



Furnishings: bollard, bike rack, seating, trash

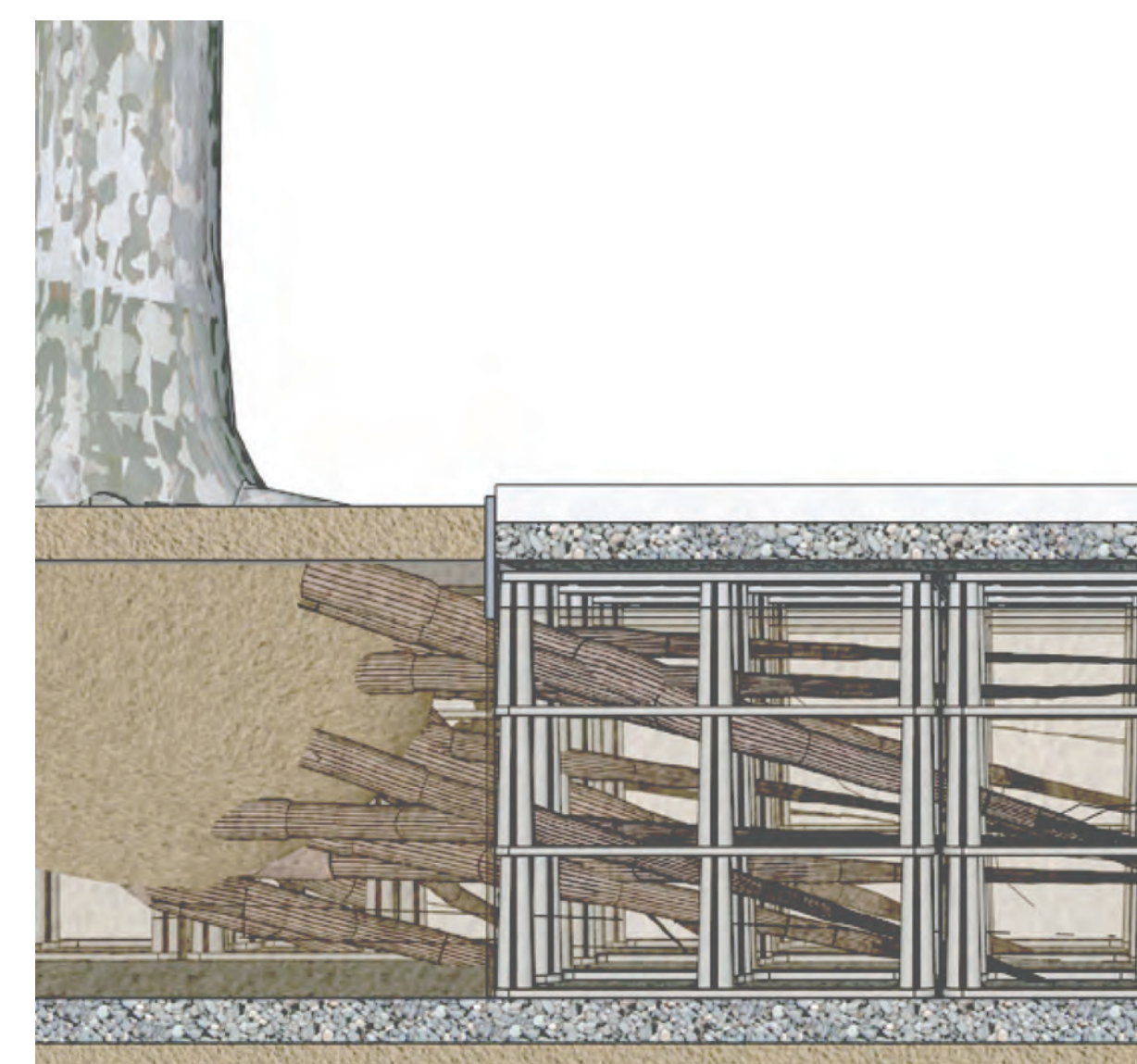
Crossing Gate



Lighting



Pavers up to 1' from trunks of trees



Underground Crate System to encourage root growth and bigger trees



- Date palms have a tropical look

- Relocate existing palms to new locations



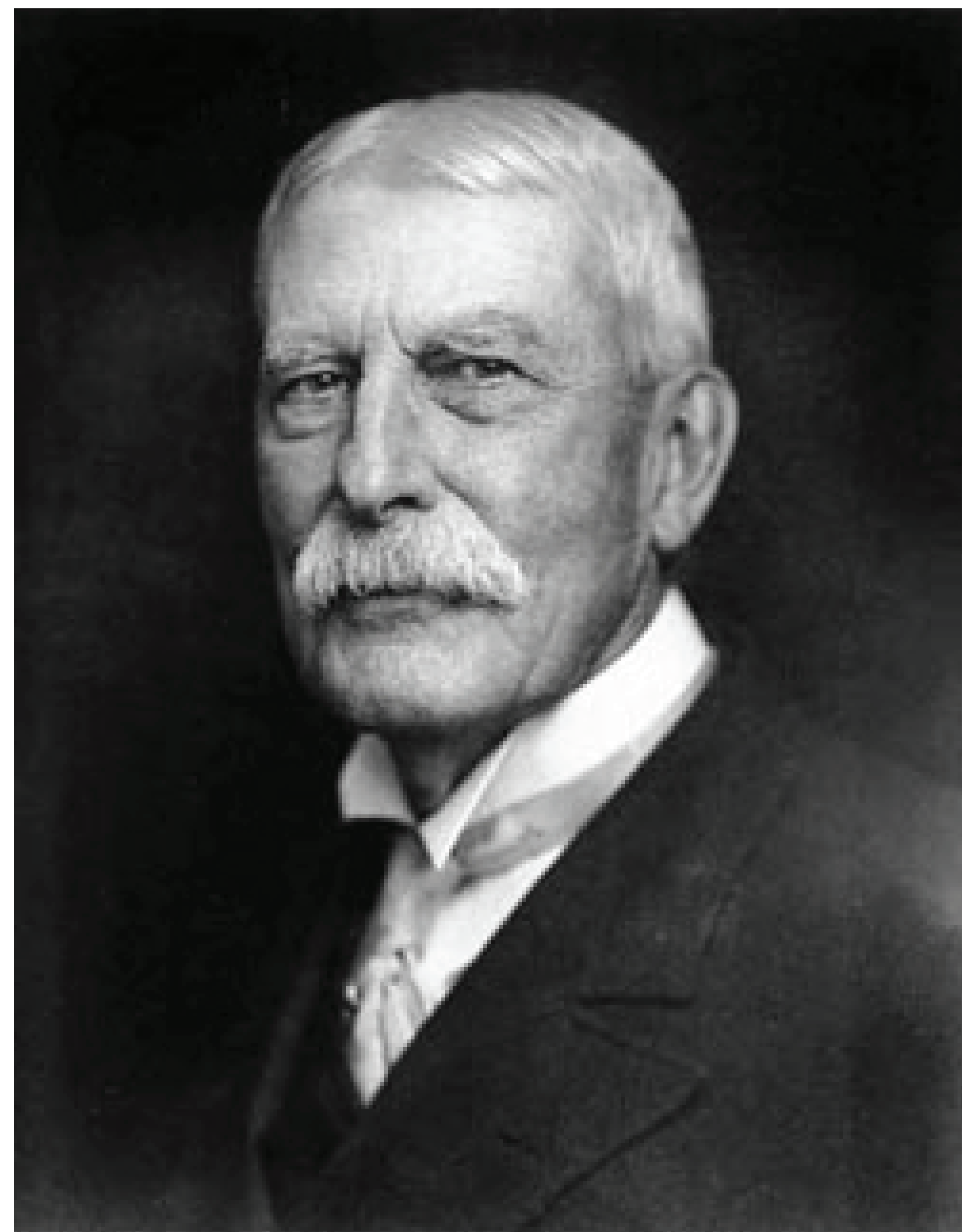
Live oak trees are native, wind resistant, and have a long life span.



design concept

Flagler

Streetscape



Photos

Henry M. Flagler

1890's train in Miami

Flagler Street 1890's

Flagler Train Yard west of Courthouse in the 1920's

The Royal Palm Hotel.

Historical Context

Inspiration

Flagler Street was named for Henry M. Flagler who brought his railroad to Miami in 1896, which put Miami on the map, attracting many more residents and visitors to his landmark hotel the Royal Palm, which was situated at the mouth of the Miami River.

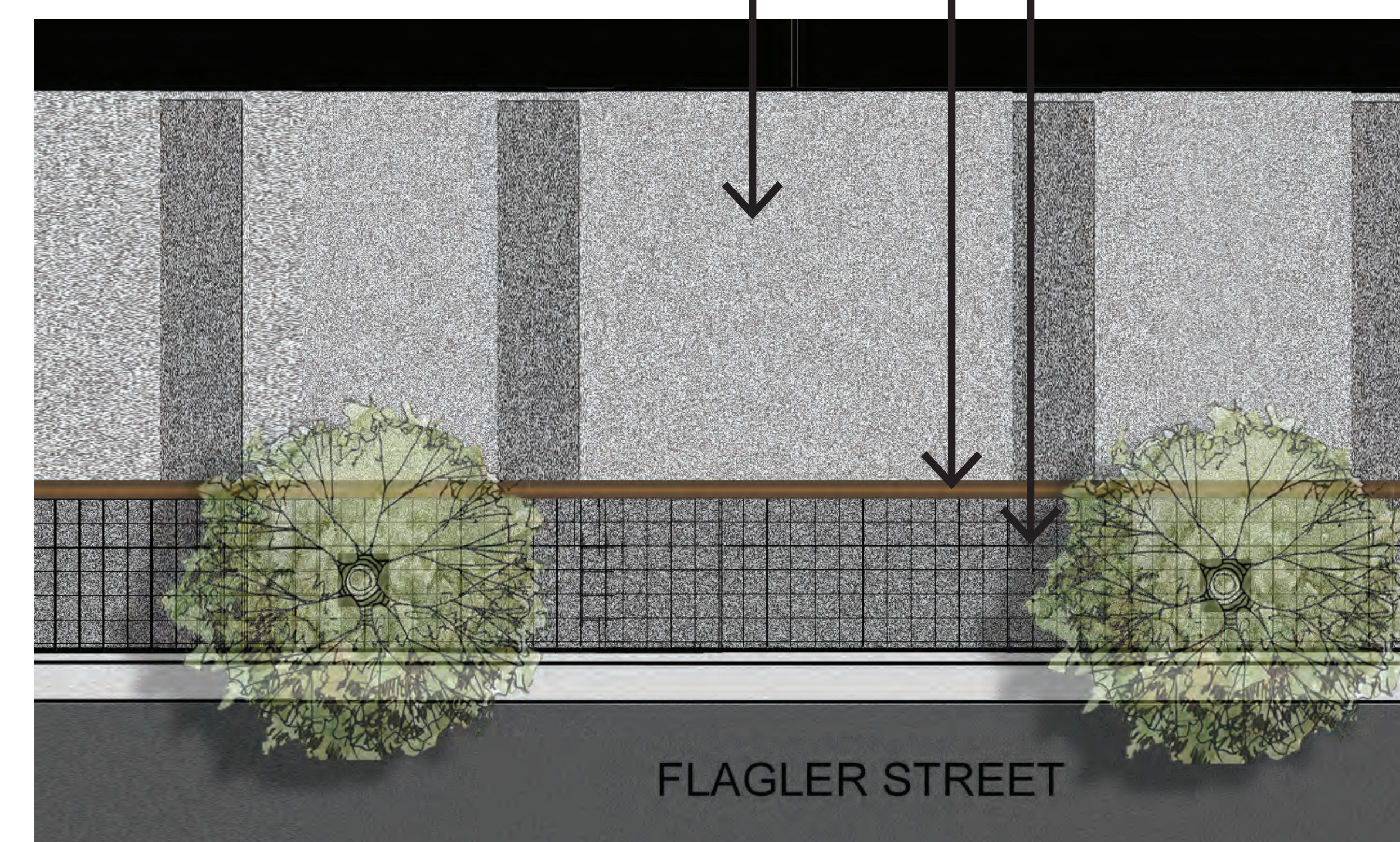
Before the railroad, most people came to Miami by boat.



Steel railroad rail embedded flush with concrete

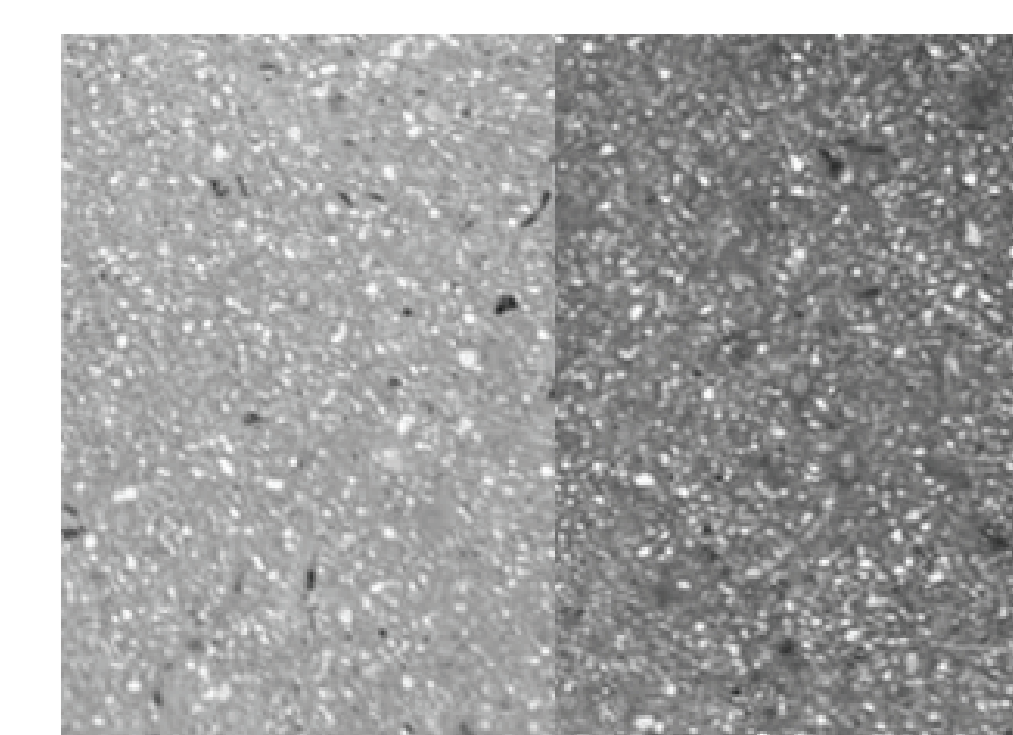
Colored concrete with exposed aggregate

Colored concrete with exposed aggregate, cut into 12" x 12" pavers



Design Concept

The sidewalk pattern echoes the repetitive bands of the railroad ties, but have been placed in pairs which have variable spacing - a metaphor of the diversity of Miami. There is an actual steel railroad rail embedded flush with the sidewalk making a tangible connection with the street's history.



← Photo of colored concrete with exposed aggregate

Photo of railroad rail →





Rodeo Drive, Los Angeles



Champs Elysees, Paris



Las Ramblas, Barcelona



Michigan Avenue, Chicago

“Great Street” Sidewalk Characteristics:

- Wide for walking & dining
- Organized to make clear delineation of uses
- Neutral colors and patterns that can change with the times

Flagler Street Task Force

“Flagler Street shall reclaim its proud and distinctive heritage as the City of Miami’s iconic main street.... A vibrant, walkable and historic shopping district.”

- Vision of Flagler Street Task Force

Objectives of Task Force:

- Limited parking bays for commercial loading/delivery and centralized valet parking service.
- Wide Sidewalks that are clean, safe, uncluttered and shaded under dense tree canopy, arcades, awnings, and canopies.
- Bustling sidewalk Cafes (Room Provided)
- Regularly occurring street festivals and events (provide removable bollards/or other removable gate)