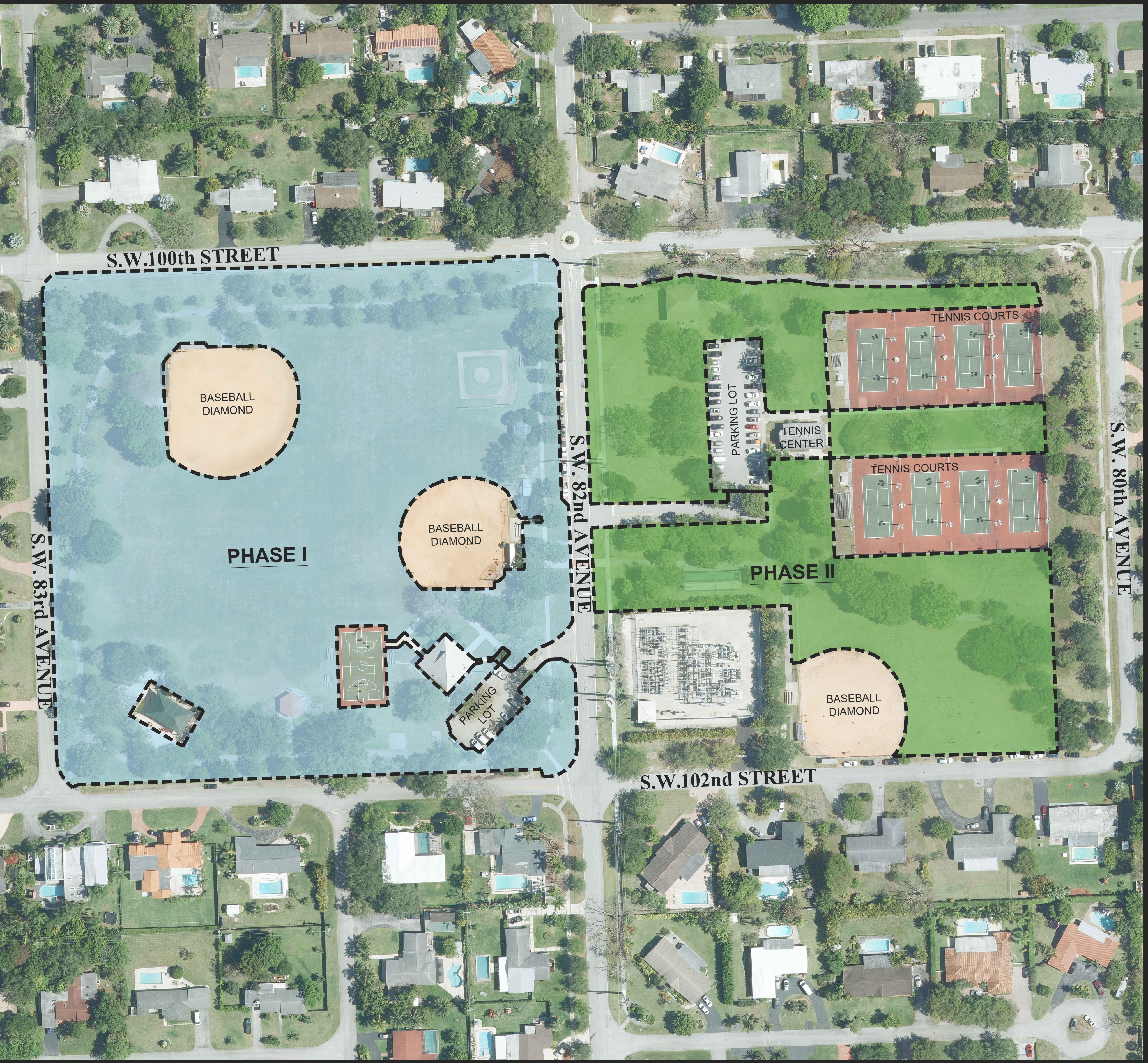


# Continental Park - Phasing Plan



TO REMAIN OPEN DURING CONSTRUCTION

- TENNIS CENTER AND COURTS
- PARKING

ESTIMATED COMPLETION

- PHASE I - SPRING 2025
- PHASE II - SUMMER 2025

LEGEND:



CONSTRUCTION PHASE I



CONSTRUCTION PHASE II

NORTH

