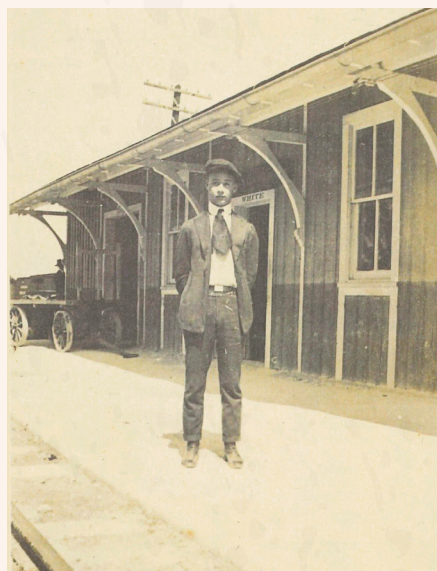


FLORIDA EAST COAST RAILWAY

The Florida East Coast Railway expansion from West Palm Beach started in June of 1895 reaching Miami on April 15, 1896, just three months before the city was officially incorporated. The railway linked the entire east coast of Florida with a transportation system that established tourism and agricultural exports as the basis of the state's economy. This spurred the growth of cities such as West Palm Beach, Lake Worth, Fort Lauderdale, Hallandale and Miami.



▲ Gentleman waiting for train at Arch Creek depot, circa 1913-1918. Courtesy collection of F. E. C. Railway Company Historian, Seth H. Bramson



◀ Florida East Coast Railway passenger train, circa 1885, Gleason Waite Romer Photo courtesy of HistoryMiami Museum

▶ David E. Riddle, Arch Creek station master, and Mrs. Riddle standing at the end of the platform. March 1917 Courtesy collection of F. E. C. Railway Company Historian, Seth H. Bramson



▼ Florida East Coast Railway first arrival to Miami, 1896 Courtesy of HistoryMiami Museum

In 1903, the Florida East Coast Railway established the Arch Creek depot about a half-mile south of the natural bridge, drawing many visitors to this unique site.

Today, FEC operates 351 miles of the same rail line from Jacksonville to Miami.



For Spanish and Creole, scan QR Code