

**DRAFT**

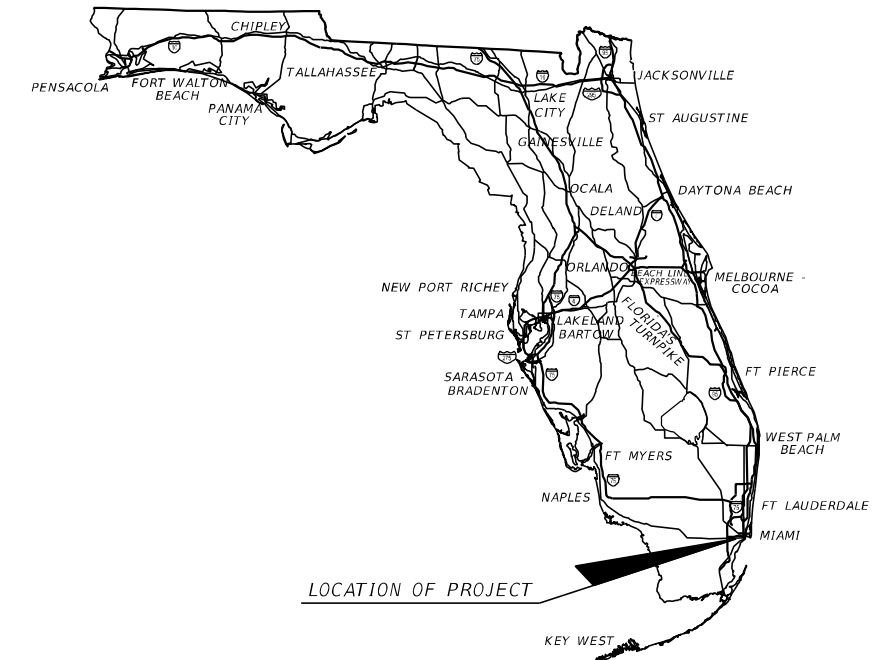
# MIAMI-DADE PARKS, RECREATION, AND OPEN SPACES (MDPROS)

## 15% PLANS

### LUDLAM TRAIL CORRIDOR PROJECT DEVELOPMENT & ENVIRONMENT (PD&E)

P&R CONTRACT NO.  
43502-15-001-14470619

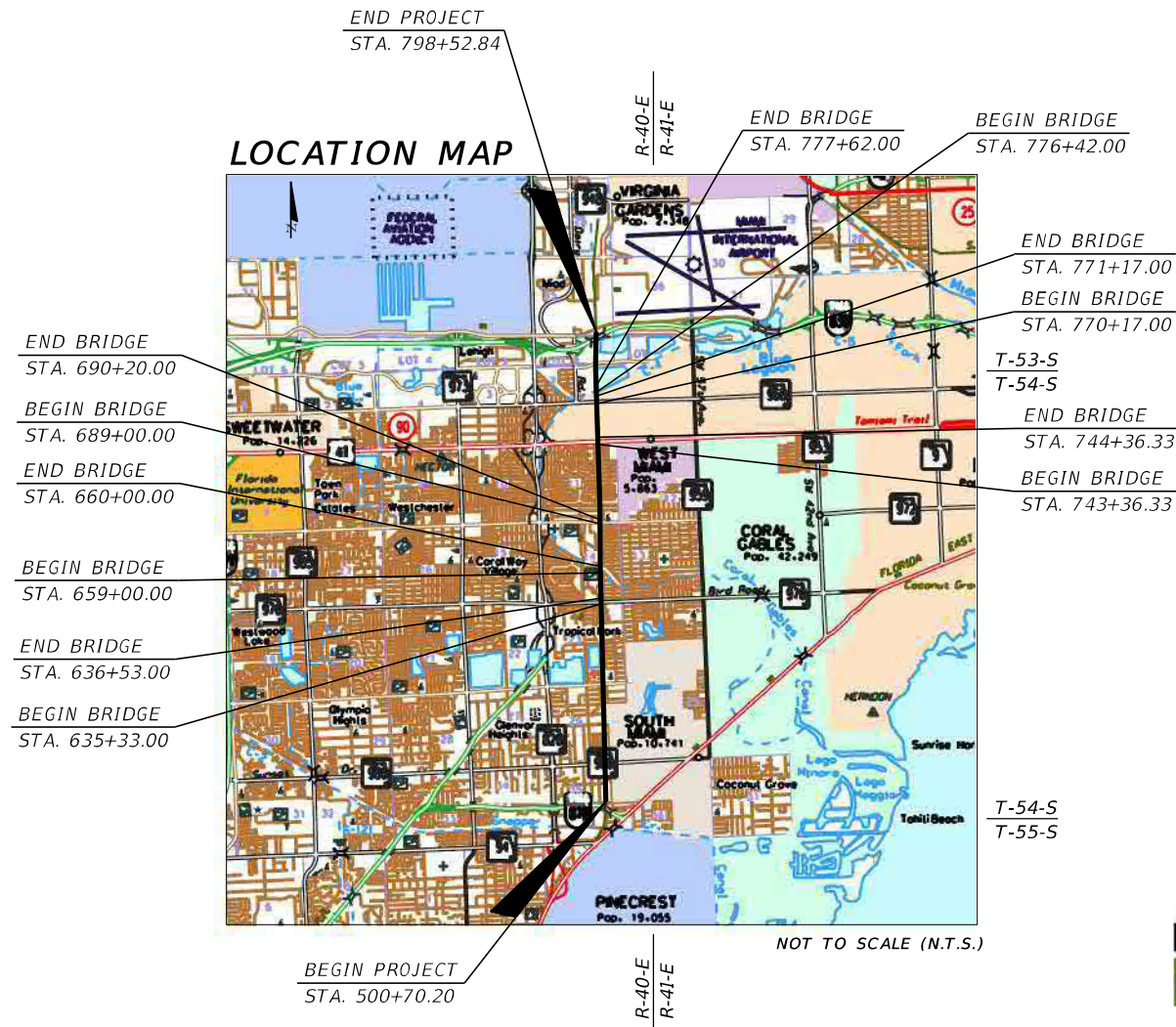
P&R PROJECT NO.  
RFQ 786B



#### INDEX OF PROGRESS PLANS SET

SHEET NO.	SHEET DESCRIPTION
1	KEY SHEET
2 - 5	TYPICAL SECTIONS
6	TYPICAL SECTION DETAILS
7 - 12	PROJECT LAYOUT
13- 40	TRAIL PLANS
41- 67	SIGNING AND PAVEMENT MARKING PLANS
68	RECOMMENDED INTERSECTION CROSSING TREATMENT
69- 79	SIGNING AND PAVEMENT MARKING INTERSECTION DETAILS
80-115	TRAIL PROFILE

#### LOCATION MAP



**MIAMI-DADE COUNTY MAYOR**  
CARLOS A. GIMENEZ

**CHAIRWOMAN**  
AUDREY M. EDMONSON

**COUNTY ATTORNEY**  
ABIGAIL PRICE-WILLIAMS

#### BOARD OF COUNTY COMMISSIONERS

- DISTRICT 1 - BARBARA J. JORDAN
- DISTRICT 2 - JEAN MONESTIME
- DISTRICT 3 - AUDREY M. EDMONSON
- DISTRICT 4 - SALLY A. HEYMAN
- DISTRICT 5 - EILEEN HIGGINS
- DISTRICT 6 - REBECA SOSA
- DISTRICT 7 - XAVIER L. SUAREZ
- DISTRICT 8 - DANIELLA LEVINE CAVA
- DISTRICT 9 - DENNIS C. MOSS
- DISTRICT 10 - JAVIER D. SOUTO
- DISTRICT 11 - JOE A. MARTINEZ
- DISTRICT 12 - JOSE "PEPE" DIAZ
- DISTRICT 13 - ESTEBAN L. BOVO JR.

#### PLANS PREPARED BY:

AECOM TECHNICAL SERVICES, INC.  
2 ALHAMBRA PLAZA, SUITE 900  
CORAL GABLES, FLORIDA 33134  
PHONE (305) 262-7466 FAX (305) 261-4017  
CERTIFICATE OF AUTHORIZATION #8115

#### MDPROS PROJECT MANAGER:

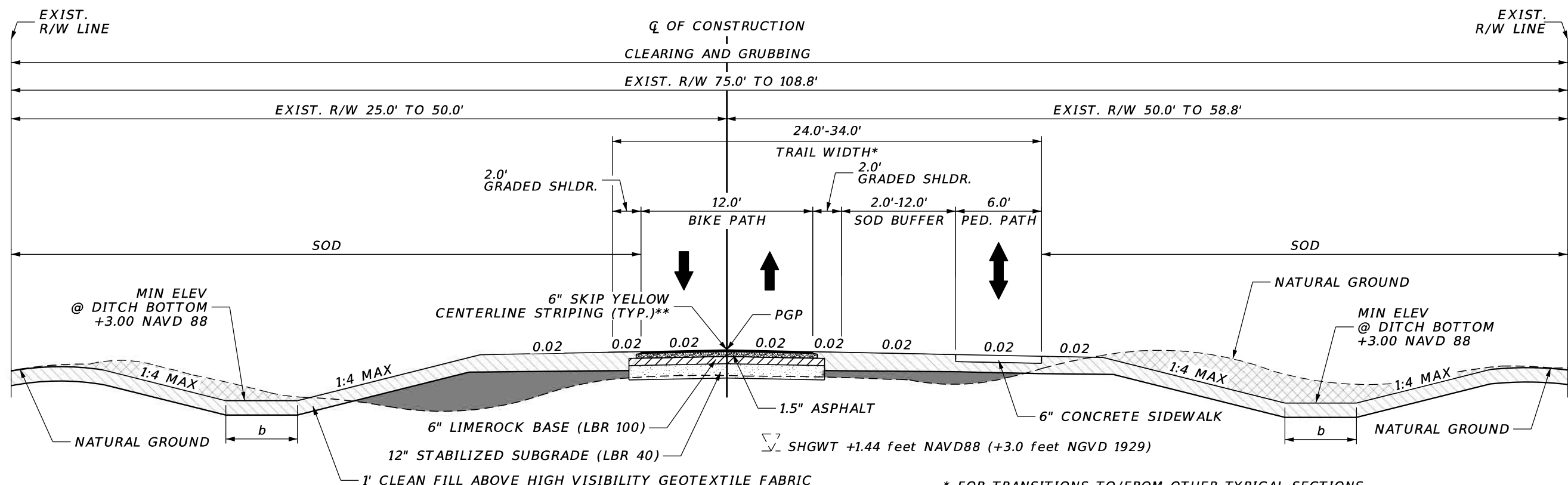
ALISSA TURTLETAUB, M.S.  
MIAMI-DADE COUNTY  
PARKS, RECREATION, AND OPEN SPACES (MDPROS)  
HICKMAN BUILDING  
275 NW 2ND STREET, 4TH FLOOR  
MIAMI, FL 33128  
PHONE (305)-755-7800



DATE	P&R CONTRACT NO.	P&R PROJECT NO.	SHEET NO.
2020/11/11	43502-15-001-14470619	RFQ 786B	1

DRAFT

# LUDLAM TRAIL BICYCLE AND PEDESTRIAN PATH (BUFFERED SEPARATION)



\* FOR TRANSITIONS TO/FROM OTHER TYPICAL SECTIONS, SEE TYPICAL SECTION DETAILS SHEET  
 \*\* FOR PAVEMENT MARKING LOCATION DETAIL, SEE TYPICAL SECTION DETAILS SHEET

TRAIL DESIGN SPEED	
18 MPH	FOR LONGITUDINAL GRADES ≤ 4%
30 MPH	FOR DOWNHILL LONGITUDINAL GRADES > 4%

EARTHWORK LEGEND	
	CUT
	RELOCATED FILL
	CLEAN FILL

DRAINAGE LEGEND	
b:	Ditch Bottom Width
Ditch depth and width is to be determined in design.	

## TYPICAL SECTION 1

FROM STA. 503+70.73 TO STA. 513+12.76  
 FROM STA. 515+47.37 TO STA. 526+88.13  
 FROM STA. 528+43.13 TO STA. 553+53.14  
 FROM STA. 554+73.14 TO STA. 566+88.34  
 FROM STA. 568+29.96 TO STA. 580+29.63  
 FROM STA. 581+84.63 TO STA. 589+72.92  
 FROM STA. 592+67.08 TO STA. 607+30.80  
 FROM STA. 644+17.08 TO STA. 656+12.37  
 FROM STA. 661+63.38 TO STA. 680+32.63  
 FROM STA. 704+24.12 TO STA. 716+84.30  
 FROM STA. 718+00.30 TO STA. 729+60.00  
 FROM STA. 757+86.35 TO STA. 762+87.18  
 FROM STA. 780+63.50 TO STA. 789+32.92

- NOTES:
- ESTIMATED SEASONAL HIGH GROUNDWATER TABLE (SHGWT) EACH YEAR IS IN THE AUGUST-SEPTEMBER PERIOD AT THE END OF THE WET SEASON DURING A YEAR OF AVERAGE (NORMAL) RAINFALL.  
(PER PRELIMINARY REPORT OF SUBSURFACE EXPLORATION AND GEOTECHNICAL ENGINEERING EVALUATIONS, OCTOBER 2018, PREPARED BY: GEOSOL, INC.)
  - SHGWT BASED ON NORTH AMERICAN VERTICAL DATUM (NAVD) 1988.
  - PGP: PROFILE GRADE POINT
  - APPLICABLE DRAINAGE IS TO BE EVALUATED/DETERMINED DURING DESIGN.
  - APPLICABLE LIGHTING IS TO BE EVALUATED/DETERMINED DURING DESIGN.
  - ANY EXISTING CHAIN LINK FENCE, ASPHALT PADS OR OTHER ITEMS/ENCROACHMENTS WITHIN THE TRAIL RIGHT OF WILL BE REMOVED AT THE TIME OF CLEARING AND GRUBBING

REVISIONS	
DATE	DESCRIPTION
	<b>DRAFT</b>

7650 CORPORATE CENTER DR., SUITE 400  
MIAMI, FL 33126-1220

LUDLAM TRAIL CORRIDOR PD&E STUDY

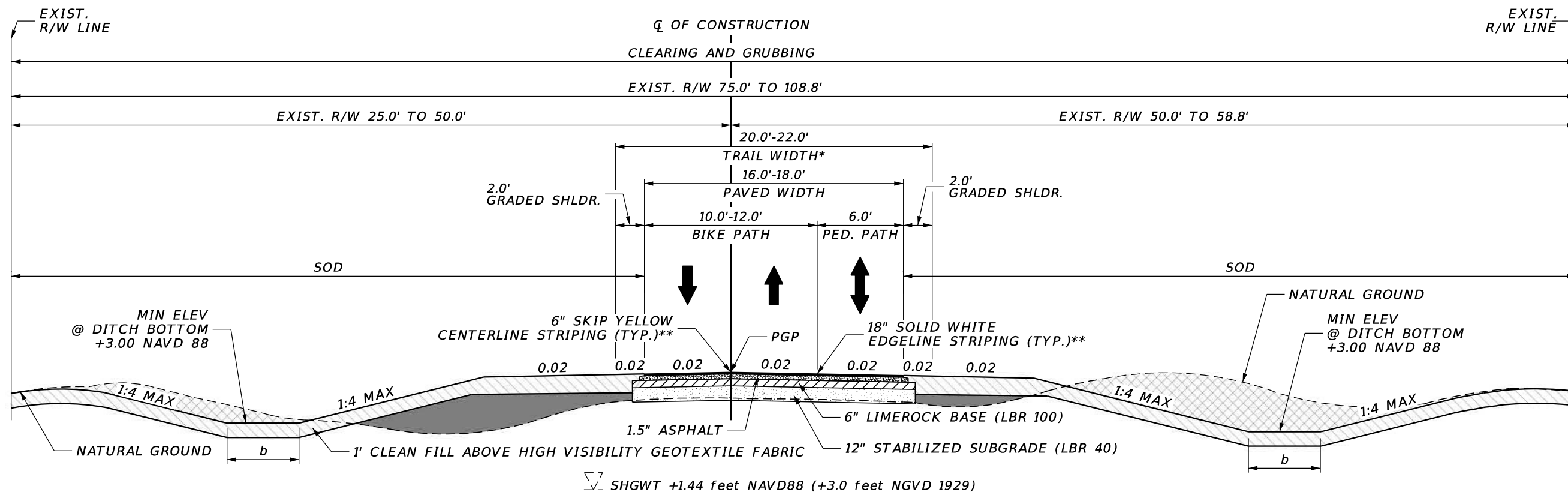
Miami-Dade County Parks, Recreation, and Open Spaces (MDPROS)	Hickman Building 275 NW 2nd Street Miami, FL 33128 305-755-7800	P&R CONTRACT NO. RFQ 786B P&R PROJECT NO. 43502-15-001-14470619
--	--	--

**LUDLAM TRAIL  
TYPICAL SECTIONS**

SHEET NO.	2
-----------	---

DRAFT

# LUDLAM TRAIL BICYCLE AND PEDESTRIAN PATH (NO SEPARATION)



## TYPICAL SECTION 2

\* FOR TRANSITIONS TO/FROM OTHER TYPICAL SECTIONS, SEE TYPICAL SECTION DETAILS SHEET

\*\* FOR PAVEMENT MARKING LOCATION DETAIL, SEE TYPICAL SECTION DETAILS SHEET

TRAIL DESIGN SPEED	
18 MPH	FOR LONGITUDINAL GRADES ≤ 4%
30 MPH	FOR DOWNHILL LONGITUDINAL GRADES > 4%

EARTHWORK LEGEND	
	CUT
	RELOCATED FILL
	CLEAN FILL

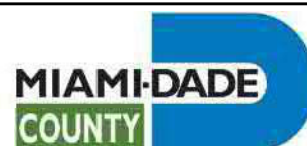
DRAINAGE LEGEND	
b:	Ditch Bottom Width
Ditch depth and width is to be determined in design.	

FROM STA. 502+06.50 TO STA. 503+00.00  
 FROM STA. 513+80.00 TO STA. 514+80.00  
 FROM STA. 590+40.00 TO STA. 592+00.00  
 FROM STA. 608+00.00 TO STA. 609+91.86  
 FROM STA. 638+96.27 TO STA. 643+50.00  
 FROM STA. 656+80.00 TO STA. 659+00.00  
 FROM STA. 681+00.00 TO STA. 687+19.50  
 FROM STA. 692+29.41 TO STA. 696+87.63  
 FROM STA. 698+82.98 TO STA. 700+36.77  
 FROM STA. 702+33.14 TO STA. 703+60.00  
 FROM STA. 744+36.33 TO STA. 756+27.05  
 FROM STA. 763+60.00 TO STA. 770+17.00  
 FROM STA. 771+17.00 TO STA. 776+42.00  
 FROM STA. 777+62.00 TO STA. 780+00.00  
 FROM STA. 790+00.00 TO STA. 795+70.00

### NOTES:

- ESTIMATED SEASONAL HIGH GROUNDWATER TABLE (SHGWT) EACH YEAR IS IN THE AUGUST-SEPTEMBER PERIOD AT THE END OF THE WET SEASON DURING A YEAR OF AVERAGE (NORMAL) RAINFALL.  
(PER PRELIMINARY REPORT OF SUBSURFACE EXPLORATION AND GEOTECHNICAL ENGINEERING EVALUATIONS, OCTOBER 2018, PREPARED BY: GEOSOL, INC.)
- SHGWT BASED ON NORTH AMERICAN VERTICAL DATUM (NAVD) 1988.
- PGP: PROFILE GRADE POINT
- APPLICABLE DRAINAGE IS TO BE EVALUATED/DETERMINED DURING DESIGN.
- APPLICABLE LIGHTING IS TO BE EVALUATED/DETERMINED DURING DESIGN.
- ANY EXISTING CHAIN LINK FENCE, ASPHALT PADS OR OTHER ITEMS/ENCROACHMENTS WITHIN THE TRAIL RIGHT OF WILL BE REMOVED AT THE TIME OF CLEARING AND GRUBBING

REVISIONS	
DATE	DESCRIPTION
	<b>DRAFT</b>



### LUDLAM TRAIL CORRIDOR PD&E STUDY

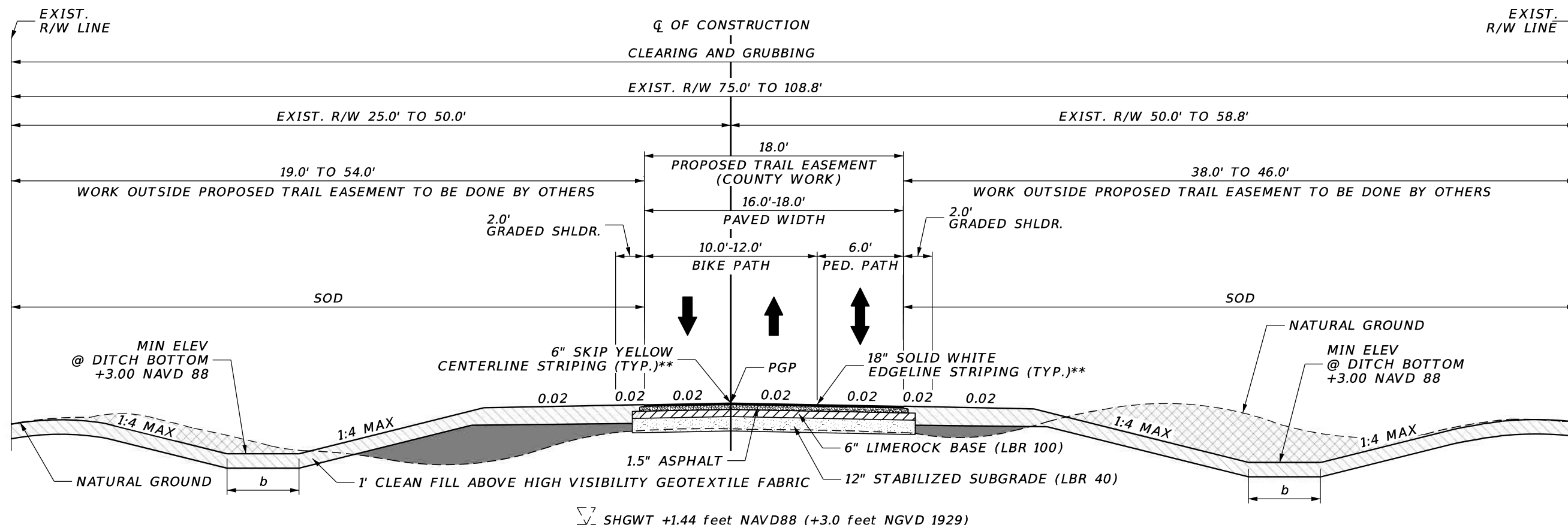
Miami-Dade County Parks, Recreation, and Open Spaces (MDPROS)	Hickman Building 275 NW 2nd Street Miami, FL 33128 305-755-7800	P&R CONTRACT NO. RFQ 786B P&R PROJECT NO. 43502-15-001-14470619
--	--	--

## LUDLAM TRAIL TYPICAL SECTIONS

SHEET NO.

3

# LUDLAM TRAIL BICYCLE AND PEDESTRIAN PATH (DEVELOPMENT ZONES)



SHGWT +1.44 feet NAVD88 (+3.0 feet NGVD 1929)

\*\* FOR PAVEMENT MARKING LOCATION DETAIL, SEE TYPICAL SECTION DETAILS SHEET

TRAIL DESIGN SPEED	
18 MPH	FOR LONGITUDINAL GRADES ≤ 4%
30 MPH	FOR DOWNHILL LONGITUDINAL GRADES > 4%

### TYPICAL SECTION 3

FROM STA. 609+91.86 TO STA. 635+33.00  
 FROM STA. 636+53.00 TO STA. 638+96.27  
 FROM STA. 687+19.50 TO STA. 689+00.00  
 FROM STA. 690+20.00 TO STA. 692+29.41  
 FROM STA. 731+62.17 TO STA. 743+36.33

EARTHWORK LEGEND	
	CUT
	RELOCATED FILL
	CLEAN FILL

DRAINAGE LEGEND
b: Ditch Bottom Width
Ditch depth and width is to be determined in design.

- NOTES:**
- ESTIMATED SEASONAL HIGH GROUNDWATER TABLE (SHGWT) EACH YEAR IS IN THE AUGUST-SEPTEMBER PERIOD AT THE END OF THE WET SEASON DURING A YEAR OF AVERAGE (NORMAL) RAINFALL.  
(PER PRELIMINARY REPORT OF SUBSURFACE EXPLORATION AND GEOTECHNICAL ENGINEERING EVALUATIONS, OCTOBER 2018, PREPARED BY: GEOSOL, INC.)
  - SHGWT BASED ON NORTH AMERICAN VERTICAL DATUM (NAVD) 1988.
  - PGP: PROFILE GRADE POINT
  - APPLICABLE DRAINAGE IS TO BE EVALUATED/DETERMINED DURING DESIGN.
  - APPLICABLE LIGHTING IS TO BE EVALUATED/DETERMINED DURING DESIGN.
  - ANY EXISTING CHAIN LINK FENCE, ASPHALT PADS OR OTHER ITEMS/ENCROACHMENTS WITHIN THE TRAIL RIGHT OF WAY MUST BE REMOVED BY OTHERS, TO COINCIDE WITH THE TIME OF CLEARING AND GRUBBING FOR THIS PROJECT

REVISIONS	
DATE	DESCRIPTION
	DRAFT



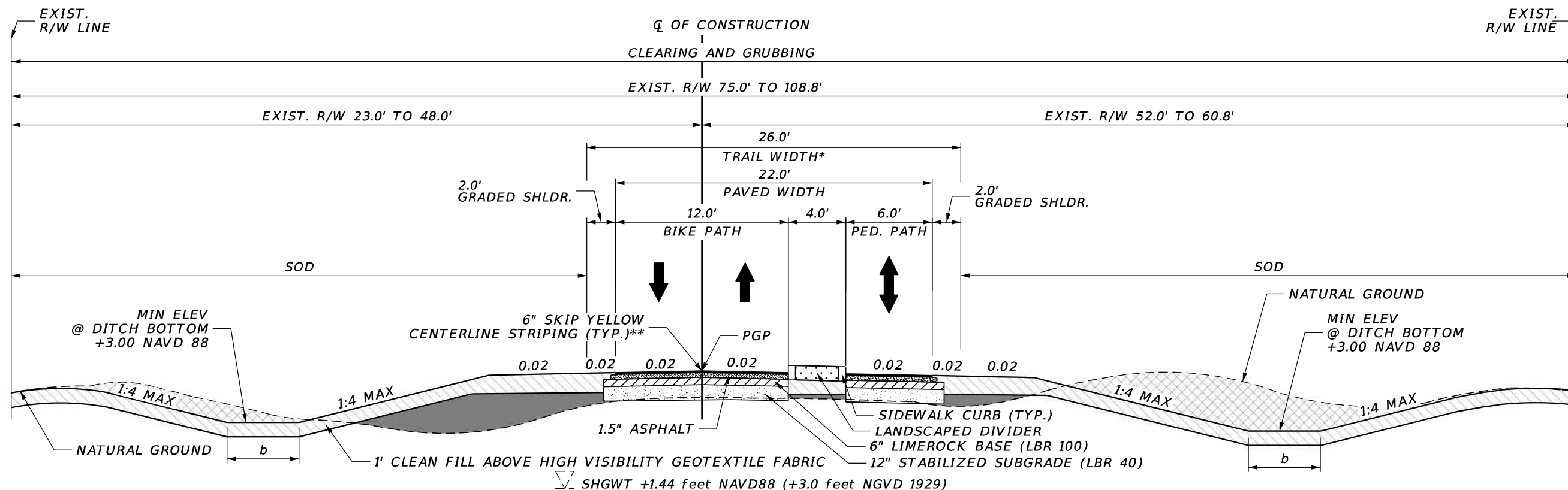
LUDLAM TRAIL CORRIDOR PD&E STUDY		
Miami-Dade County Parks, Recreation, and Open Spaces (MDPROS)	Hickman Building 275 NW 2nd Street Miami, FL 33128 305-755-7800	P&R CONTRACT NO. RFQ 786B P&R PROJECT NO. 43502-15-001-14470619

**LUDLAM TRAIL  
TYPICAL SECTIONS**

SHEET  
NO.  
  
4

DRAFT

# LUDLAM TRAIL BICYCLE AND PEDESTRIAN PATH (WITH LANDSCAPED DIVIDER)



## TYPICAL SECTION 4

FROM STA. 500+71.20 TO STA. 501+66.70  
 FROM STA. 526+88.13 TO STA. 528+43.13  
 FROM STA. 553+53.14 TO STA. 554+73.14  
 FROM STA. 567+13.96 TO STA. 568+29.96  
 FROM STA. 580+29.63 TO STA. 581+84.63  
 FROM STA. 660+44.10 TO STA. 661+63.38  
 FROM STA. 697+27.55 TO STA. 698+43.55  
 FROM STA. 700+77.34 TO STA. 701+93.34  
 FROM STA. 716+84.30 TO STA. 718+00.30  
 FROM STA. 730+06.03 TO STA. 731+22.37  
 FROM STA. 756+66.85 TO STA. 757+86.85

\* FOR TRANSITIONS TO/FROM OTHER TYPICAL SECTIONS, SEE TYPICAL SECTION DETAILS SHEET

\*\* FOR PAVEMENT MARKING LOCATION DETAIL, SEE TYPICAL SECTION DETAILS SHEET

### NOTES:

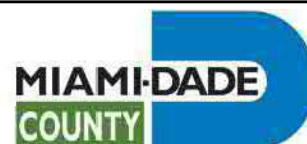
1. ESTIMATED SEASONAL HIGH GROUNDWATER TABLE (SHGWT) EACH YEAR IS IN THE AUGUST-SEPTEMBER PERIOD AT THE END OF THE WET SEASON DURING A YEAR OF AVERAGE (NORMAL) RAINFALL. (PER PRELIMINARY REPORT OF SUBSURFACE EXPLORATION AND GEOTECHNICAL ENGINEERING EVALUATIONS, OCTOBER 2018, PREPARED BY: GEOSOL, INC.)
2. SHGWT BASED ON NORTH AMERICAN VERTICAL DATUM (NAVD) 1988.
3. PGP: PROFILE GRADE POINT
4. APPLICABLE DRAINAGE IS TO BE EVALUATED/DETERMINED DURING DESIGN.
5. APPLICABLE LIGHTING IS TO BE EVALUATED/DETERMINED DURING DESIGN.
6. ANY EXISTING CHAIN LINK FENCE, ASPHALT PADS OR OTHER ITEMS/ENCROACHMENTS WITHIN THE TRAIL RIGHT OF WILL BE REMOVED AT THE TIME OF CLEARING AND GRUBBING

TRAIL DESIGN SPEED	
18 MPH	FOR LONGITUDINAL GRADES ≤ 4%
30 MPH	FOR DOWNHILL LONGITUDINAL GRADES > 4%

EARTHWORK LEGEND	
	CUT
	RELOCATED FILL
	CLEAN FILL

DRAINAGE LEGEND
b: Ditch Bottom Width
Ditch depth and width is to be determined in design.

REVISIONS	
DATE	DESCRIPTION
	DRAFT



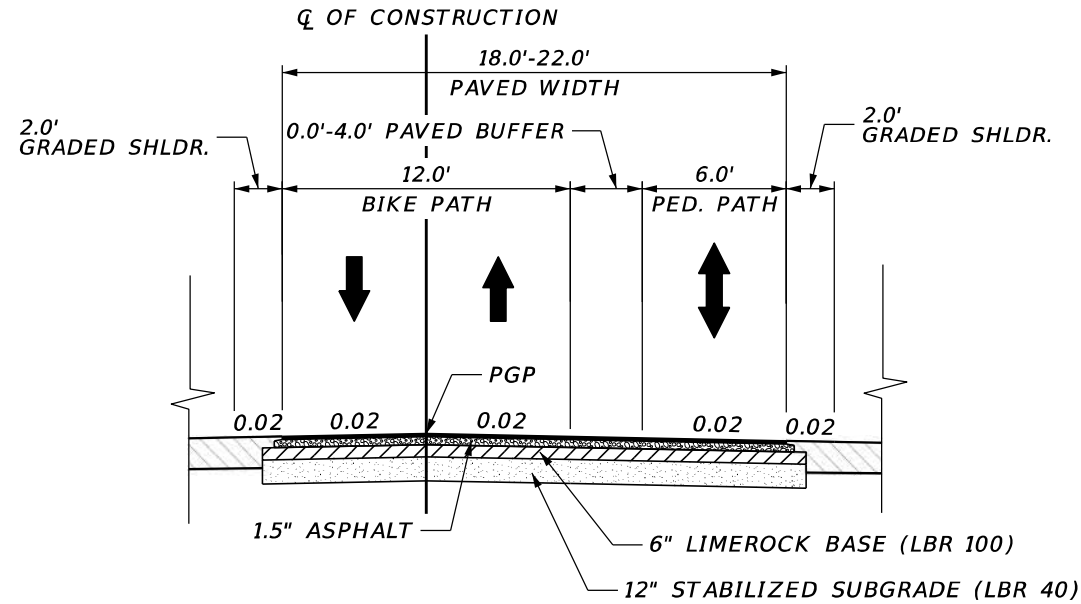
LUDLAM TRAIL CORRIDOR PD&E STUDY		
Miami-Dade County Parks, Recreation, and Open Spaces (MDPROS)	Hickman Building 275 NW 2nd Street Miami, FL 33128 305-755-7800	P&R CONTRACT NO. RFQ 786B P&R PROJECT NO. 43502-15-001-14470619

LUDLAM TRAIL  
TYPICAL SECTIONS

SHEET NO.  
5

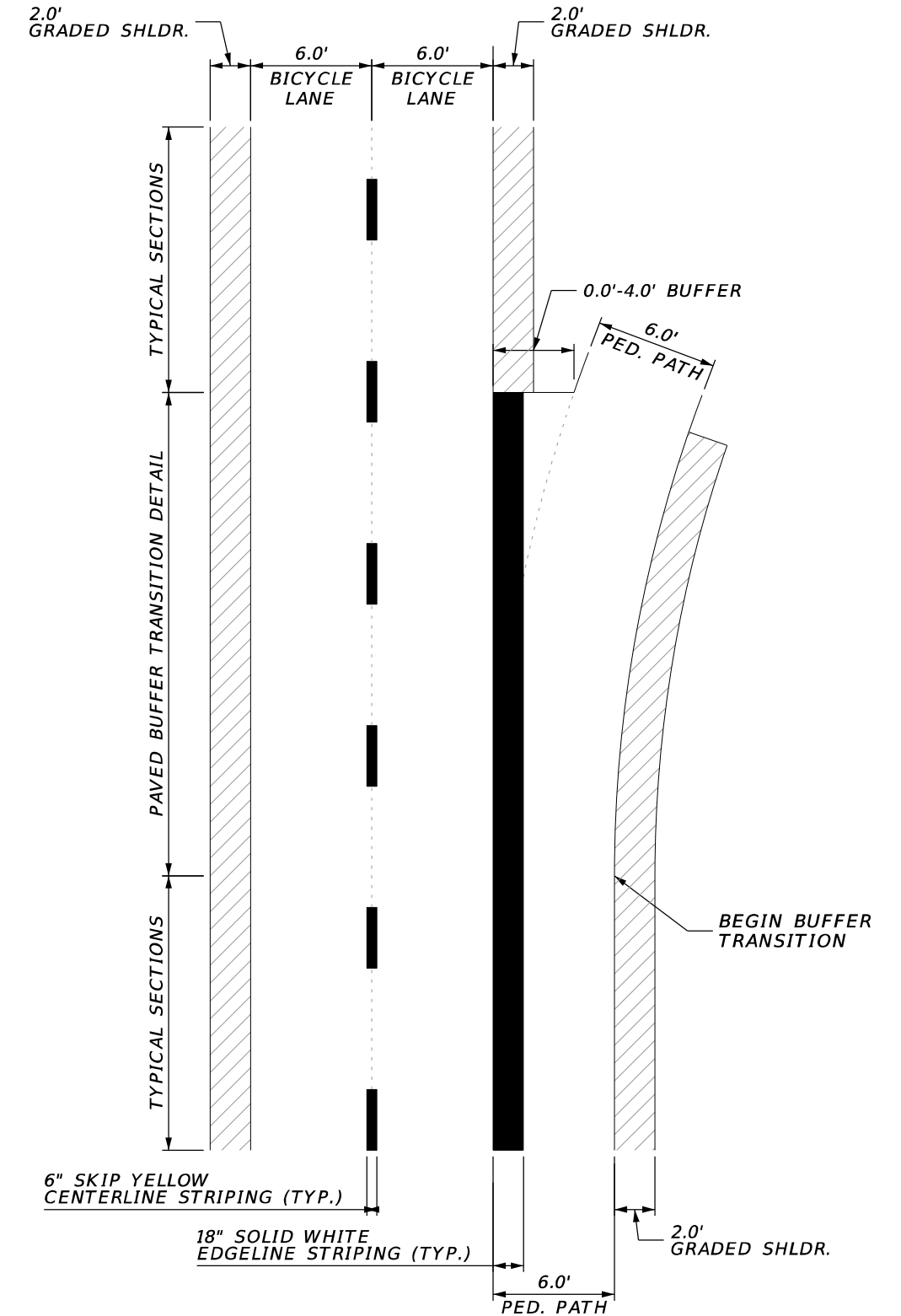
DRAFT

### LUDLAM TRAIL BICYCLE AND PEDESTRIAN PATH PAVED BUFFER TRANSITION DETAIL

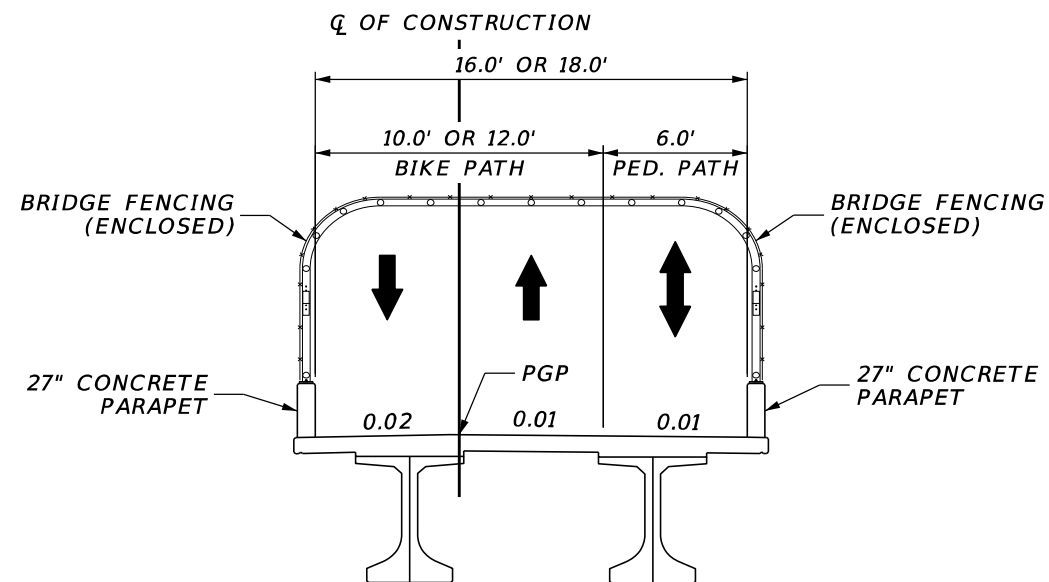


- FROM STA. 501+66.70 TO STA. 502+06.50
- FROM STA. 503+00.00 TO STA. 503+70.73
- FROM STA. 513+12.76 TO STA. 513+80.00
- FROM STA. 514+80.00 TO STA. 515+47.37
- FROM STA. 566+88.34 TO STA. 567+13.96
- FROM STA. 589+72.92 TO STA. 590+40.00
- FROM STA. 592+00.00 TO STA. 592+67.08
- FROM STA. 607+30.80 TO STA. 608+00.00
- FROM STA. 643+50.00 TO STA. 644+17.08
- FROM STA. 656+12.37 TO STA. 656+80.00
- FROM STA. 660+00.00 TO STA. 660+44.10
- FROM STA. 680+32.63 TO STA. 681+00.00
- FROM STA. 696+87.63 TO STA. 697+27.55
- FROM STA. 698+43.55 TO STA. 698+82.98
- FROM STA. 700+36.77 TO STA. 700+77.34
- FROM STA. 701+93.34 TO STA. 702+33.14
- FROM STA. 703+60.00 TO STA. 704+24.12
- FROM STA. 729+60.00 TO STA. 730+06.03
- FROM STA. 731+22.37 TO STA. 731+62.17
- FROM STA. 756+27.05 TO STA. 756+66.85
- FROM STA. 762+87.18 TO STA. 763+60.00
- FROM STA. 780+00.00 TO STA. 780+63.50
- FROM STA. 789+32.92 TO STA. 790+00.00

### LUDLAM TRAIL BICYCLE AND PEDESTRIAN PATH PAVEMENT MARKING LOCATION DETAIL



### LUDLAM TRAIL PEDESTRIAN BRIDGE TYPICAL SECTION DETAIL



- FROM STA. 635+33.00 TO STA. 636+53.00
- FROM STA. 659+00.00 TO STA. 660+00.00
- FROM STA. 689+00.00 TO STA. 690+20.00
- FROM STA. 743+36.33 TO STA. 744+36.33
- FROM STA. 770+17.00 TO STA. 771+17.00
- FROM STA. 776+42.00 TO STA. 777+62.00

DRAFT

REVISIONS	
DATE	DESCRIPTION
	DRAFT



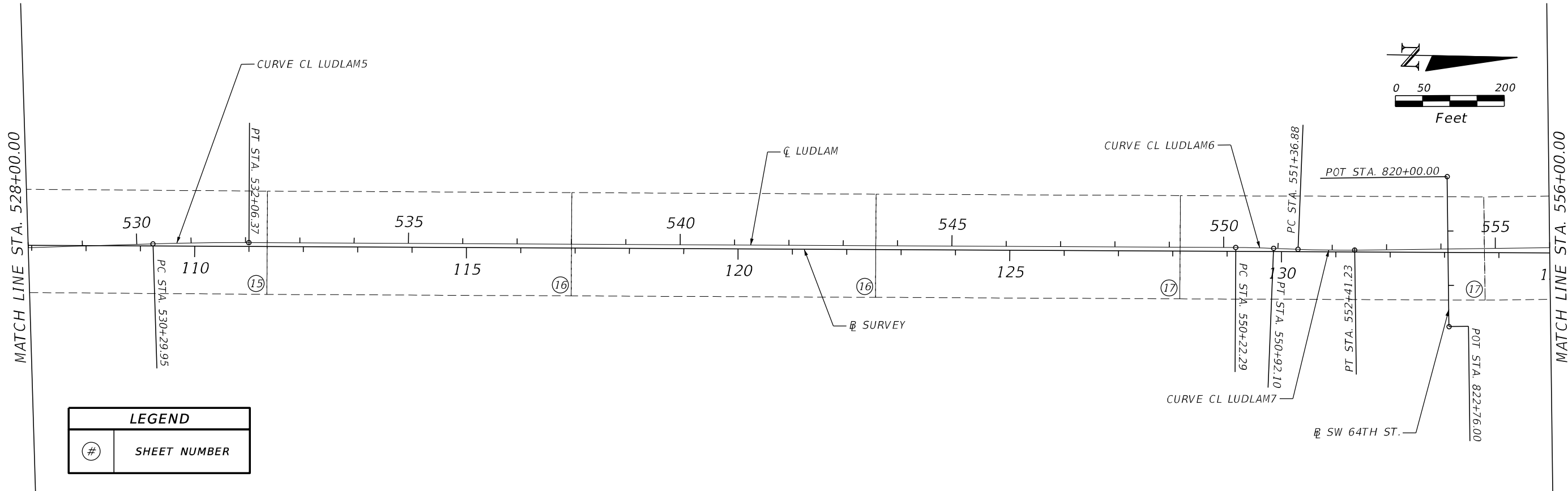
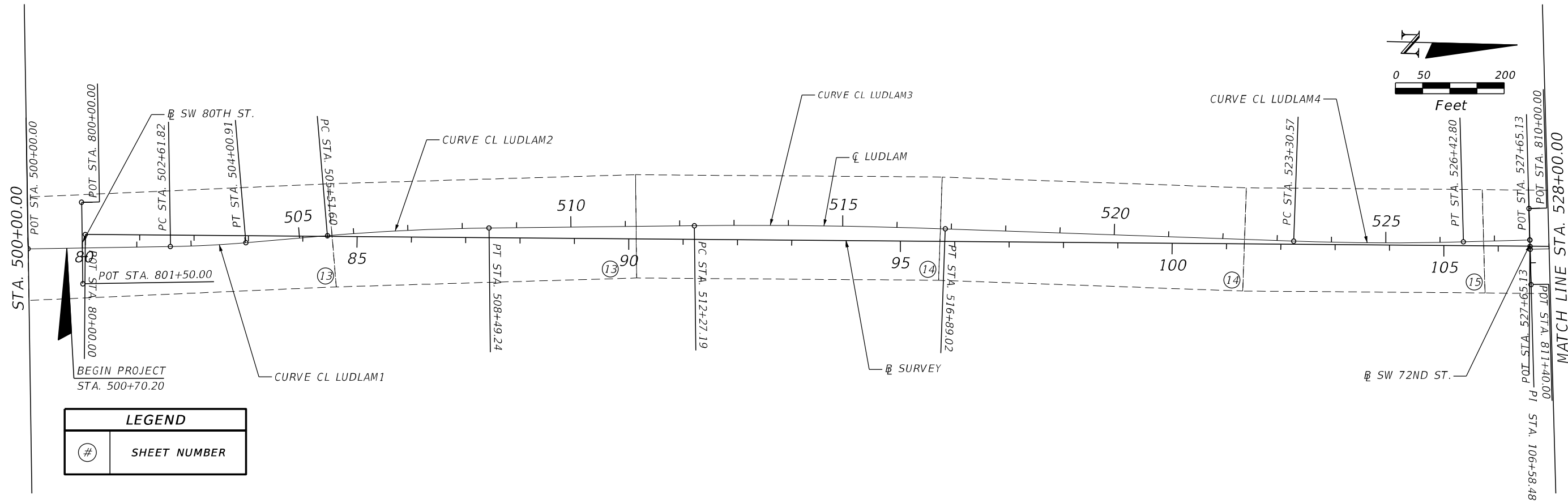
#### LUDLAM TRAIL CORRIDOR PD&E STUDY

Miami-Dade County Parks, Recreation, and Open Spaces (MDPROS)	Hickman Building 275 NW 2nd Street Miami, FL 33128 305-755-7800	P&R CONTRACT NO. RFQ 786B P&R PROJECT NO. 43502-15-001-14470619
--	--	--

### LUDLAM TRAIL TYPICAL SECTION DETAILS

SHEET NO.

6



DRAFT

REVISIONS	
DATE	DESCRIPTION
	<b>DRAFT</b>

**AECOM**  
7650 CORPORATE CENTER DR., SUITE 400  
MIAMI, FL 33126-1220

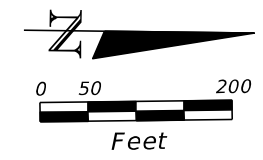
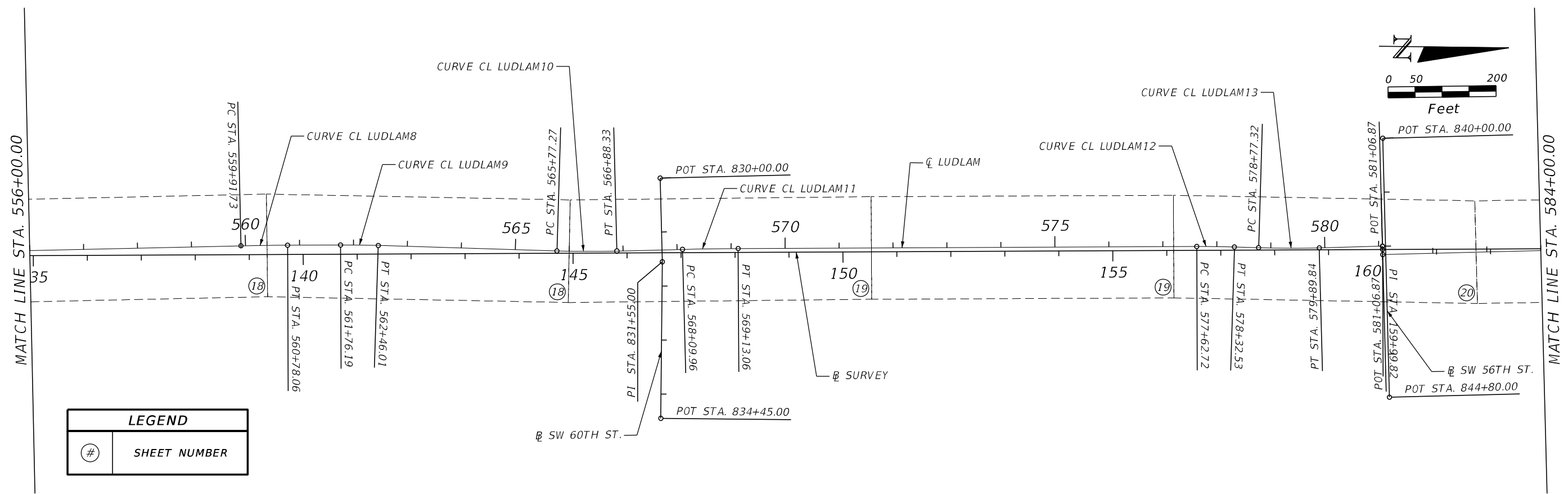
**MIAMI-DADE COUNTY**

**LUDLAM TRAIL CORRIDOR PD&E STUDY**

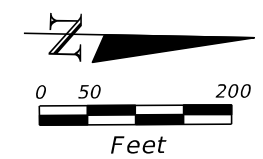
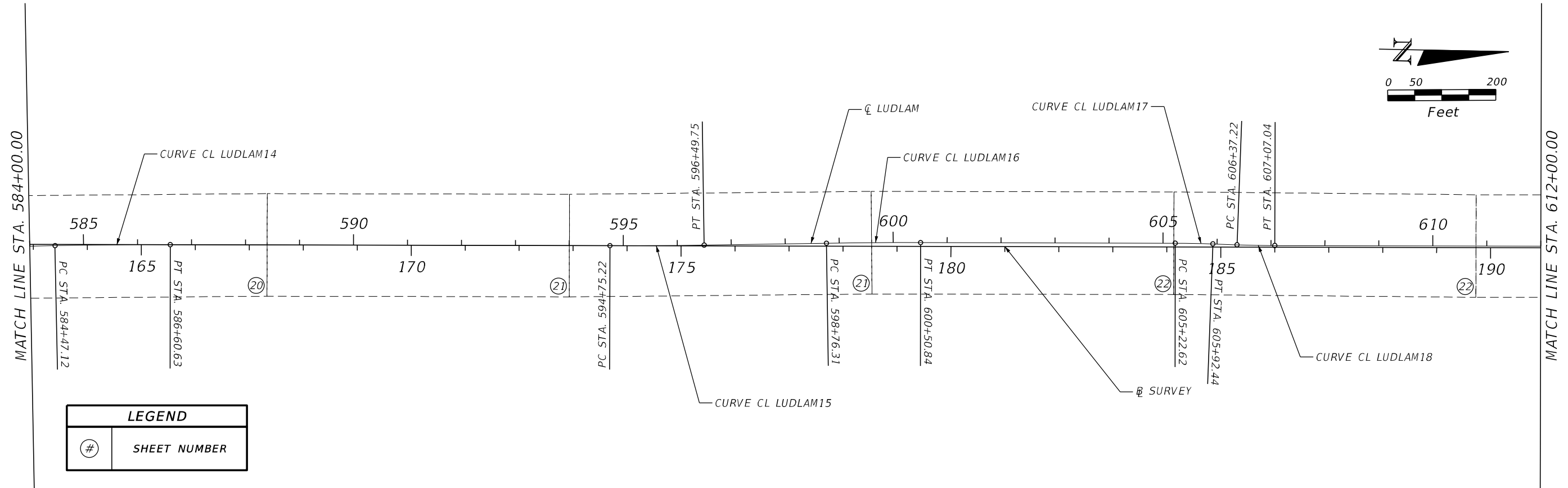
Miami-Dade County Parks, Recreation, and Open Spaces (MDPROS)	Hickman Building 275 NW 2nd Street Miami, FL 33128 305-755-7800	P&R CONTRACT NO. RFQ 786B P&R PROJECT NO. 43502-15-001-14470619
--	--	--

**PROJECT LAYOUT**

SHEET NO.
7



LEGEND	
#	SHEET NUMBER



LEGEND	
#	SHEET NUMBER

REVISIONS	
DATE	DESCRIPTION
	DRAFT

AECOM

7650 CORPORATE CENTER DR., SUITE 400  
MIAMI, FL 33126-1220

MIAMI-DADE  
COUNTY

LUDLAM TRAIL CORRIDOR PD&E STUDY		
Miami-Dade County Parks, Recreation, and Open Spaces (MDPROS)	Hickman Building 275 NW 2nd Street Miami, FL 33128 305-755-7800	P&R CONTRACT NO. RFQ 786B P&R PROJECT NO. 43502-15-001-14470619

PROJECT LAYOUT

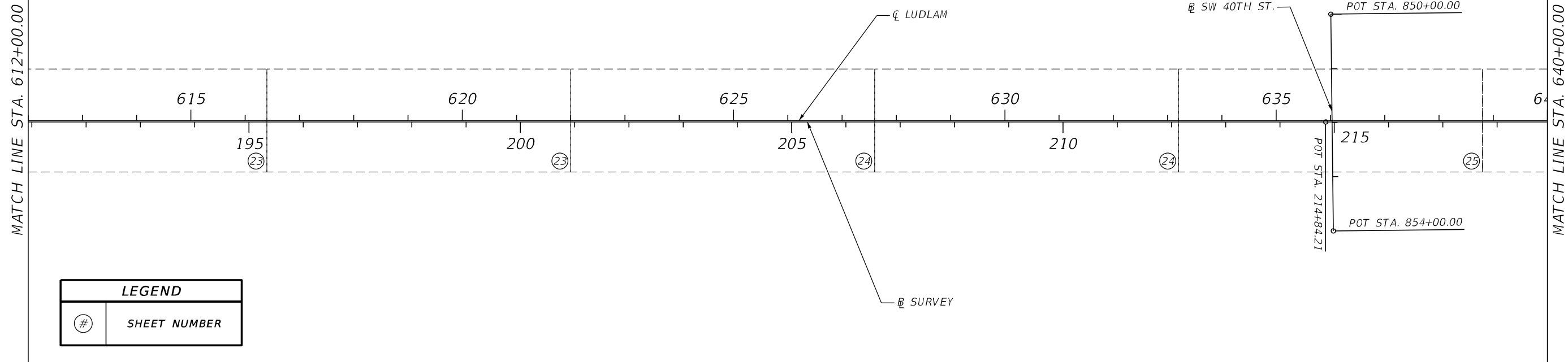
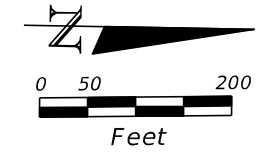
SHEET NO.
8

DRAFT



MATCH LINE STA. 612+00.00

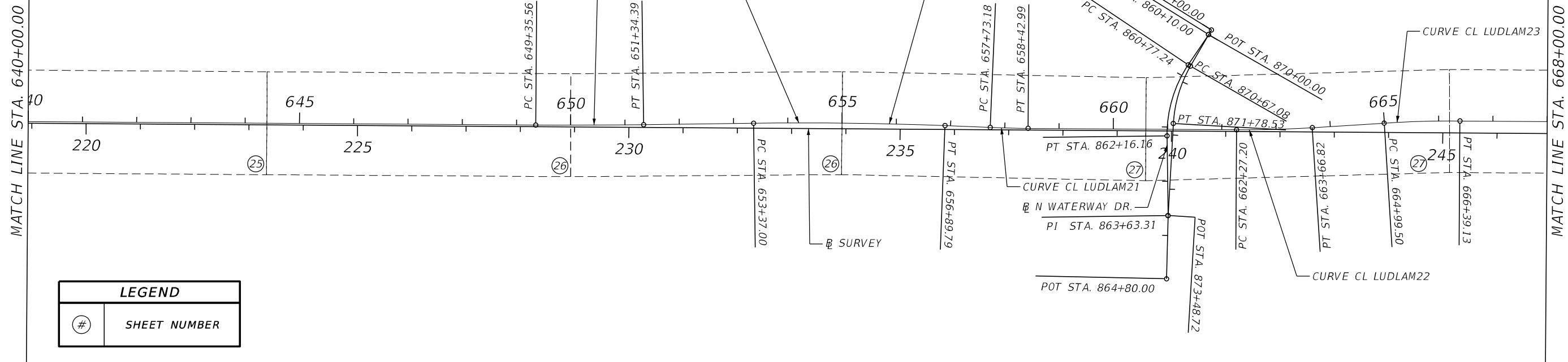
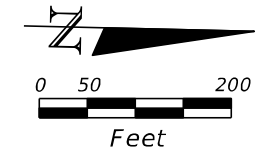
MATCH LINE STA. 640+00.00



LEGEND	
#	SHEET NUMBER

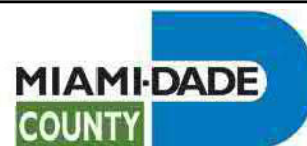
MATCH LINE STA. 640+00.00

MATCH LINE STA. 668+00.00



LEGEND	
#	SHEET NUMBER

REVISIONS	
DATE	DESCRIPTION
	<b>DRAFT</b>



LUDLAM TRAIL CORRIDOR PD&E STUDY

Miami-Dade County Parks, Recreation, and Open Spaces (MDPROS)	Hickman Building 275 NW 2nd Street Miami, FL 33128 305-755-7800	P&R CONTRACT NO. RFQ 786B P&R PROJECT NO. 43502-15-001-14470619
--	--	--

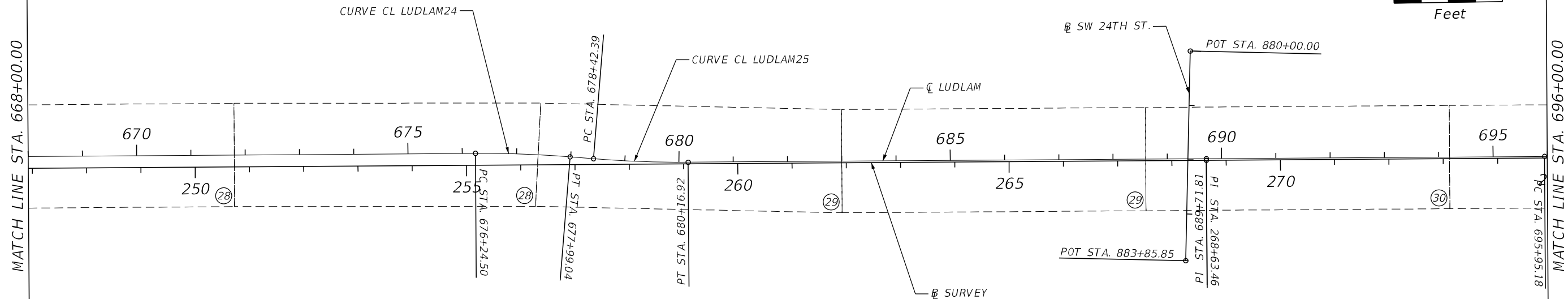
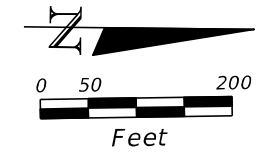
PROJECT LAYOUT

SHEET NO. 9

DRAFT

MATCH LINE STA. 668+00.00

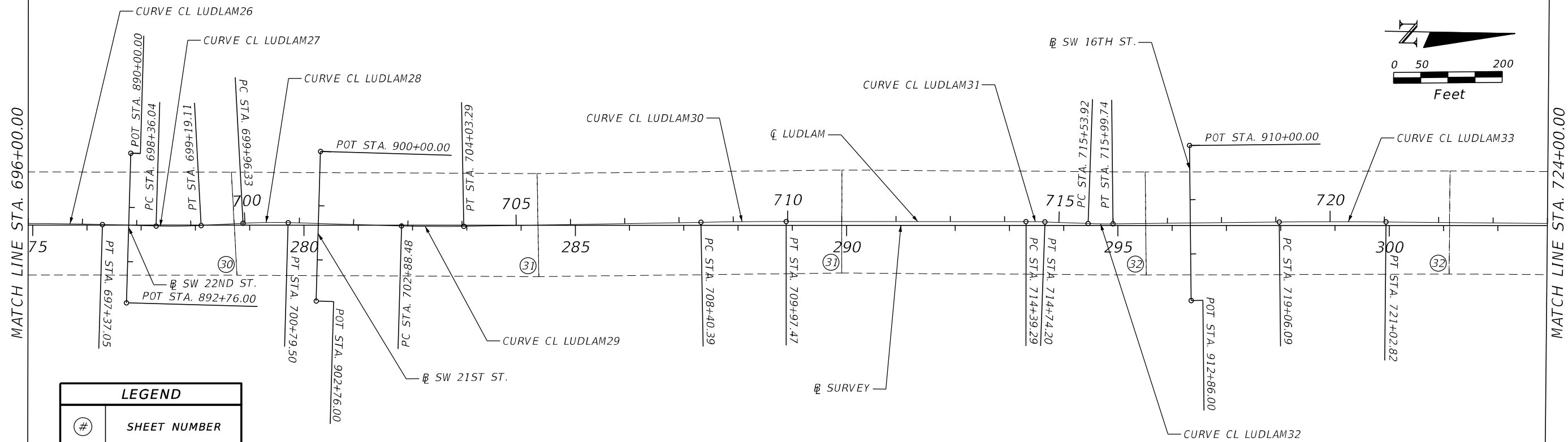
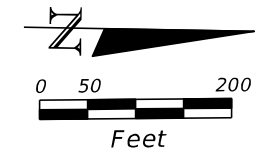
MATCH LINE STA. 696+00.00



LEGEND	
#	SHEET NUMBER

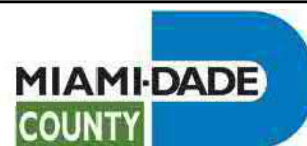
MATCH LINE STA. 696+00.00

MATCH LINE STA. 724+00.00



LEGEND	
#	SHEET NUMBER

REVISIONS	
DATE	DESCRIPTION
	DRAFT



LUDLAM TRAIL CORRIDOR PD&E STUDY

Miami-Dade County Parks, Recreation, and Open Spaces (MDPROS)	Hickman Building 275 NW 2nd Street Miami, FL 33128 305-755-7800	P&R CONTRACT NO. RFQ 786B P&R PROJECT NO. 43502-15-001-14470619
--	--	--

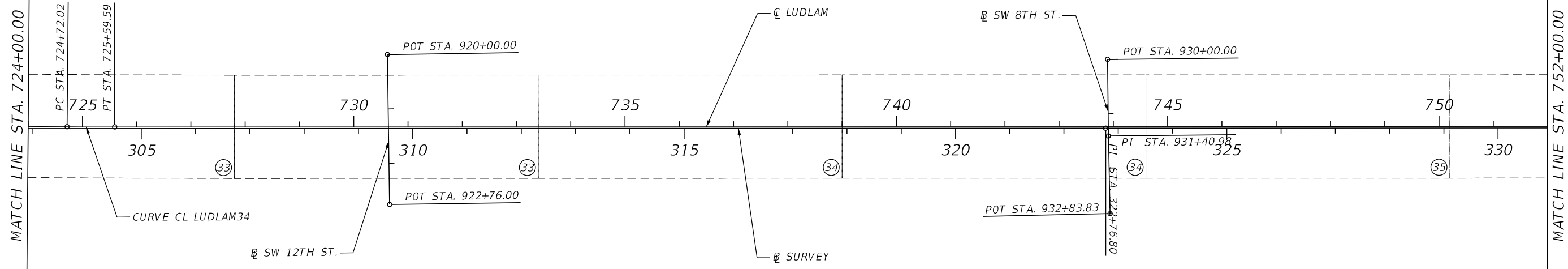
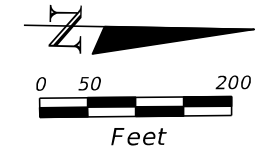
PROJECT LAYOUT

SHEET NO.  
10

DRAFT

MATCH LINE STA. 724+00.00

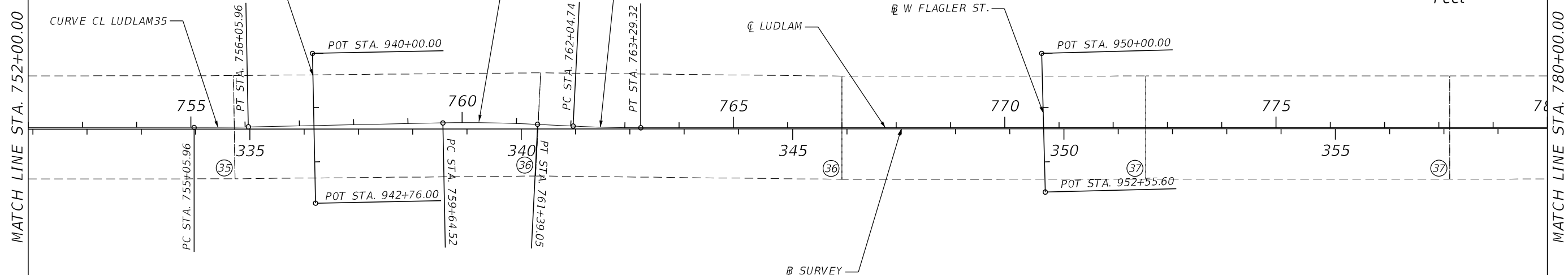
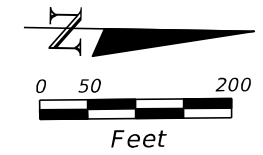
MATCH LINE STA. 752+00.00



LEGEND	
#	SHEET NUMBER

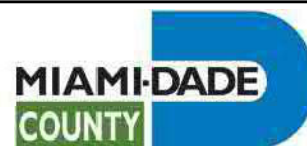
MATCH LINE STA. 752+00.00

MATCH LINE STA. 780+00.00



LEGEND	
#	SHEET NUMBER

DATE	REVISIONS DESCRIPTION
	<b>DRAFT</b>



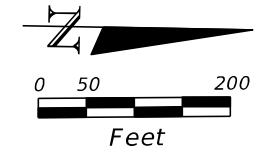
LUDLAM TRAIL CORRIDOR PD&E STUDY

Miami-Dade County Parks, Recreation, and Open Spaces (MDPROS)	Hickman Building 275 NW 2nd Street Miami, FL 33128 305-755-7800	P&R CONTRACT NO. RFQ 786B P&R PROJECT NO. 43502-15-001-14470619
--	--	--

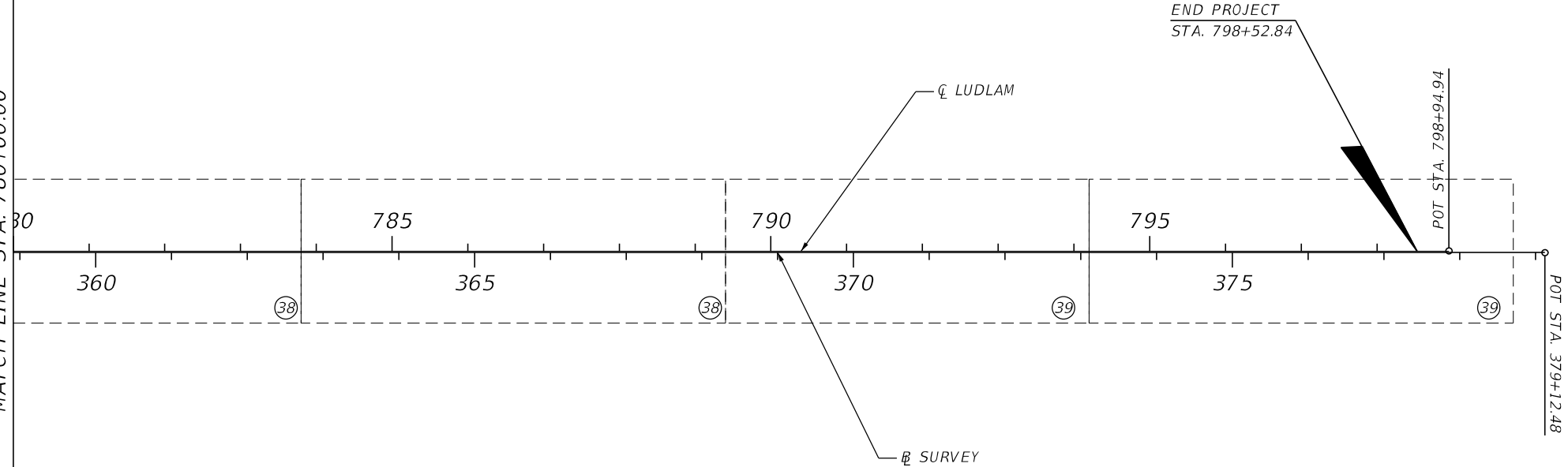
PROJECT LAYOUT

SHEET NO. 11

DRAFT



MATCH LINE STA. 780+00.00



LEGEND	
#	SHEET NUMBER

DRAFT

<table border="1"> <thead> <tr> <th>DATE</th> <th>REVISIONS DESCRIPTION</th> </tr> </thead> <tbody> <tr> <td></td> <td><b>DRAFT</b></td> </tr> </tbody> </table>		DATE	REVISIONS DESCRIPTION		<b>DRAFT</b>	<p>7650 CORPORATE CENTER DR., SUITE 400 MIAMI, FL 33126-1220</p>		<p><b>LUDLAM TRAIL CORRIDOR PD&amp;E STUDY</b></p> <table border="1"> <tr> <td>Miami-Dade County Parks, Recreation, and Open Spaces (MDPROS)</td> <td>Hickman Building 275 NW 2nd Street Miami, FL 33128 305-755-7800</td> <td>P&amp;R CONTRACT NO. RFQ 786B P&amp;R PROJECT NO. 43502-15-001-14470619</td> </tr> </table>	Miami-Dade County Parks, Recreation, and Open Spaces (MDPROS)	Hickman Building 275 NW 2nd Street Miami, FL 33128 305-755-7800	P&R CONTRACT NO. RFQ 786B P&R PROJECT NO. 43502-15-001-14470619	<p><b>PROJECT LAYOUT</b></p>	<table border="1"> <tr> <td>SHEET NO.</td> </tr> <tr> <td>12</td> </tr> </table>	SHEET NO.	12
DATE	REVISIONS DESCRIPTION														
	<b>DRAFT</b>														
Miami-Dade County Parks, Recreation, and Open Spaces (MDPROS)	Hickman Building 275 NW 2nd Street Miami, FL 33128 305-755-7800	P&R CONTRACT NO. RFQ 786B P&R PROJECT NO. 43502-15-001-14470619													
SHEET NO.															
12															