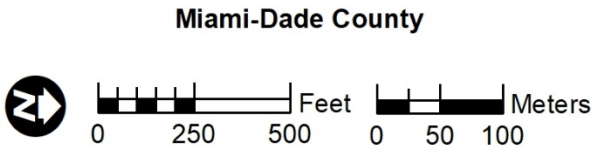


Figure 4a: Project APE  
(Map 1 of 5)

Ludlam Trail Corridor  
Project PD&E Study  
(444236-1-22-01)

 Project APE

Note: The project APE for both  
archaeological and historical resources  
consists of the 5.6-mile segment of the  
abandoned FEC railroad ROW.





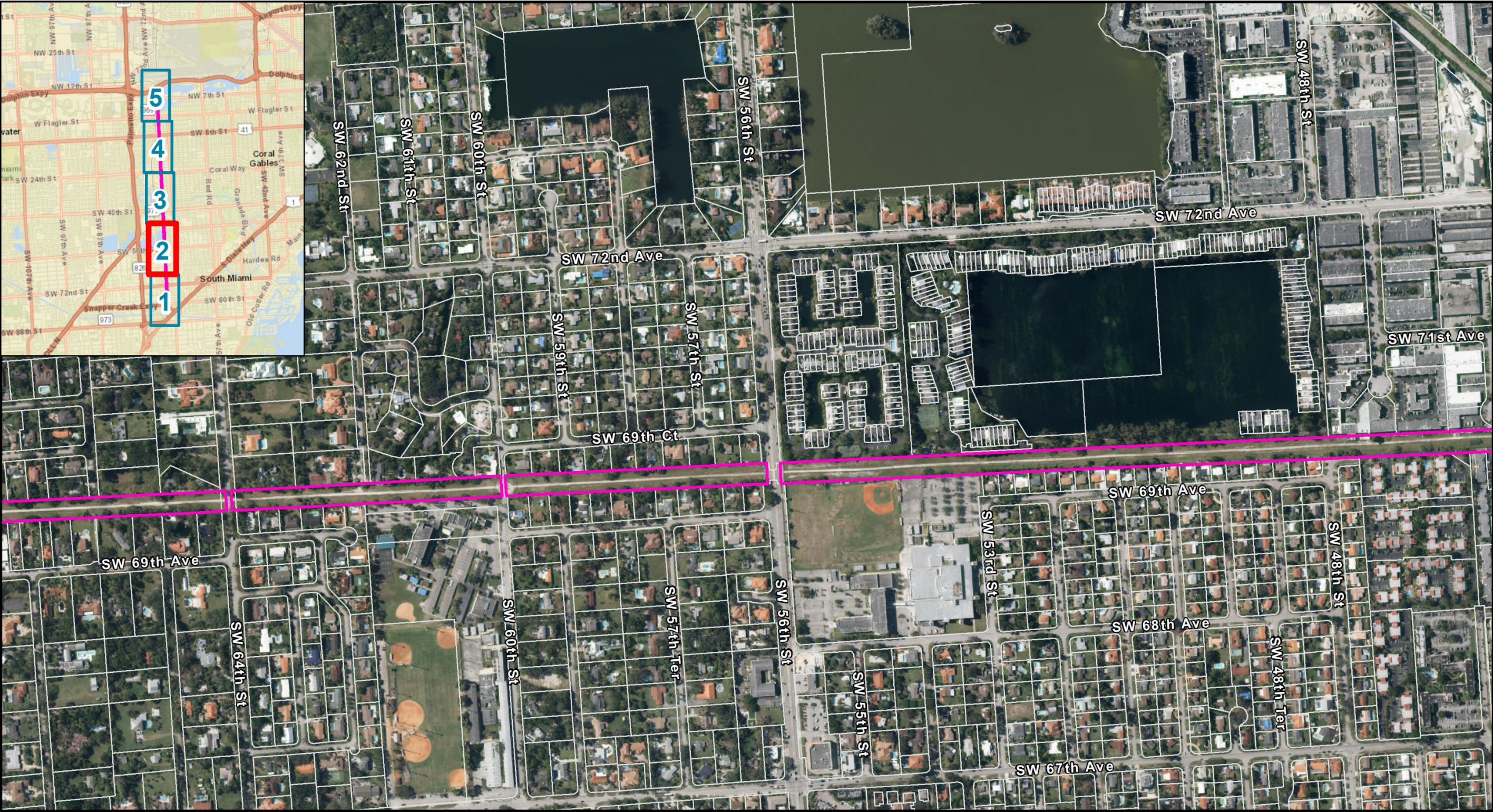
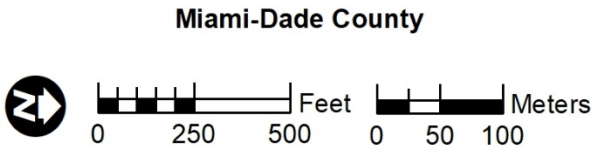


Figure 4b: Project APE  
(Map 2 of 5)

Ludlam Trail Corridor  
Project PD&E Study  
(444236-1-22-01)

 Project APE

Note: The project APE for both  
archaeological and historical resources  
consists of the 5.6-mile segment of the  
abandoned FEC railroad ROW.





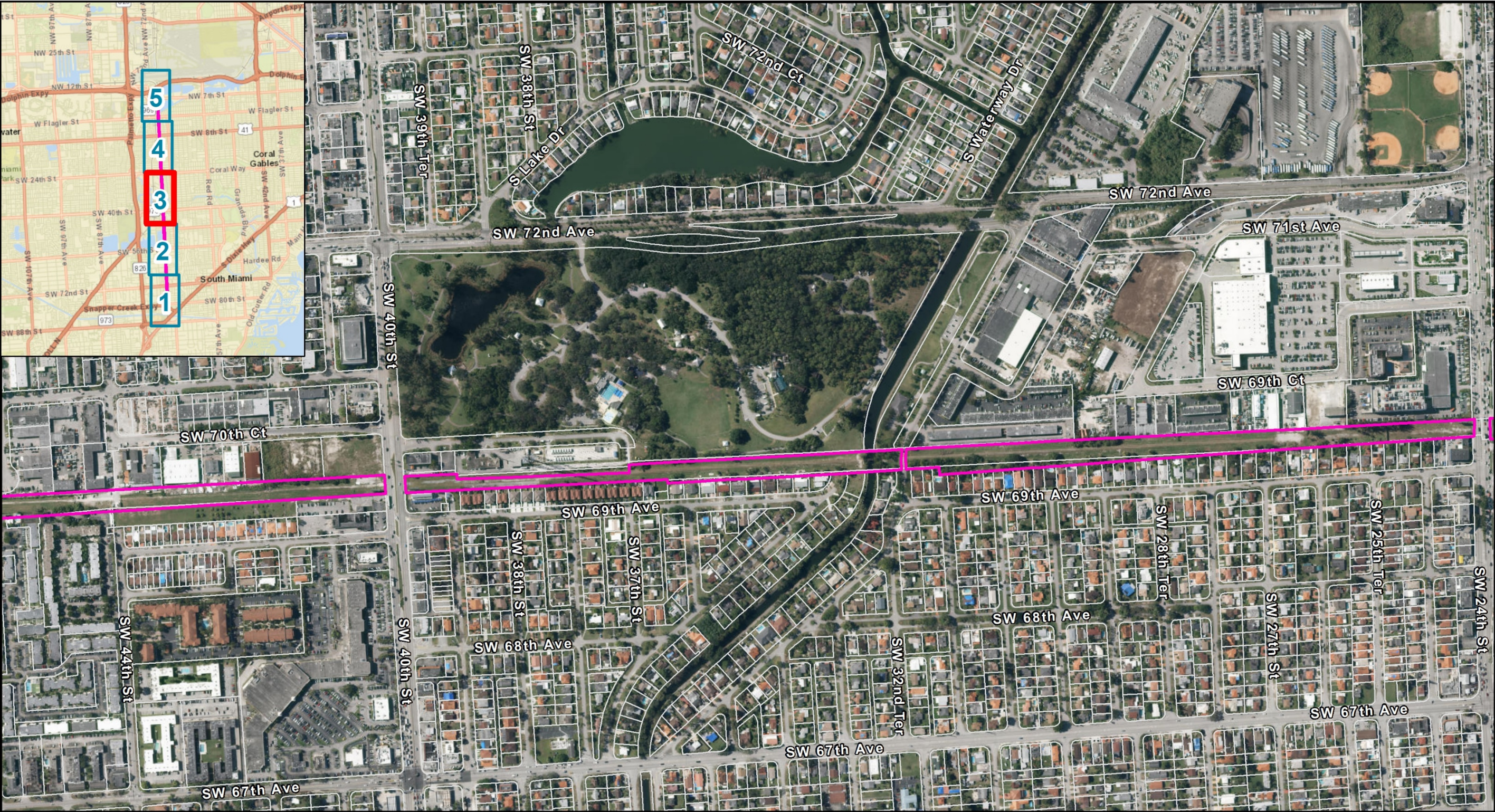
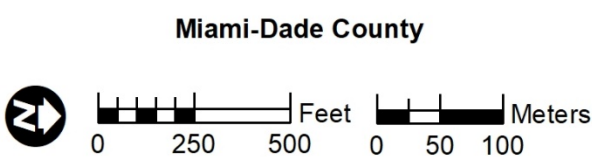


Figure 4c: Project APE  
(Map 3 of 5)

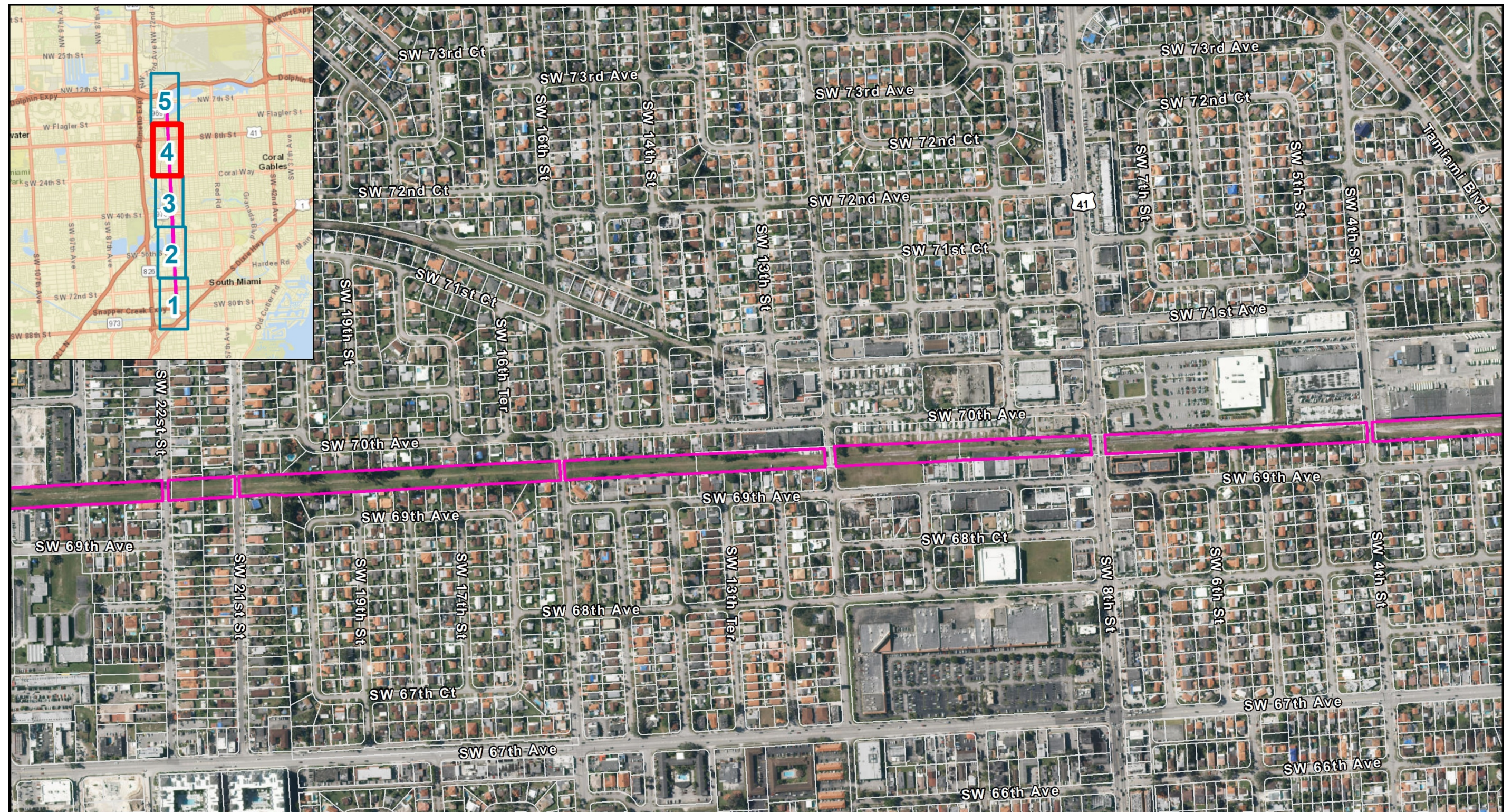
Ludlam Trail Corridor  
Project PD&E Study  
(444236-1-22-01)

 Project APE

Note: The project APE for both  
archaeological and historical resources  
consists of the 5.6-mile segment of the  
abandoned FEC railroad ROW.







**Figure 4d: Project APE**  
(Map 4 of 5)

Ludlam Trail Corridor  
Project PD&E Study  
(444236-1-22-01)

 Project APE

Note: The project APE for both  
archaeological and historical resources  
consists of the 5.6-mile segment of the  
abandoned FEC railroad ROW.

Miami-Dade County







**Figure 4e: Project APE  
(Map 5 of 5)**

Ludlam Trail Corridor  
Project PD&E Study  
(444236-1-22-01)

 Project APE

Note: The project APE for both archaeological and historical resources consists of the 5.6-mile segment of the abandoned FEC railroad ROW.

**Miami-Dade County**

