





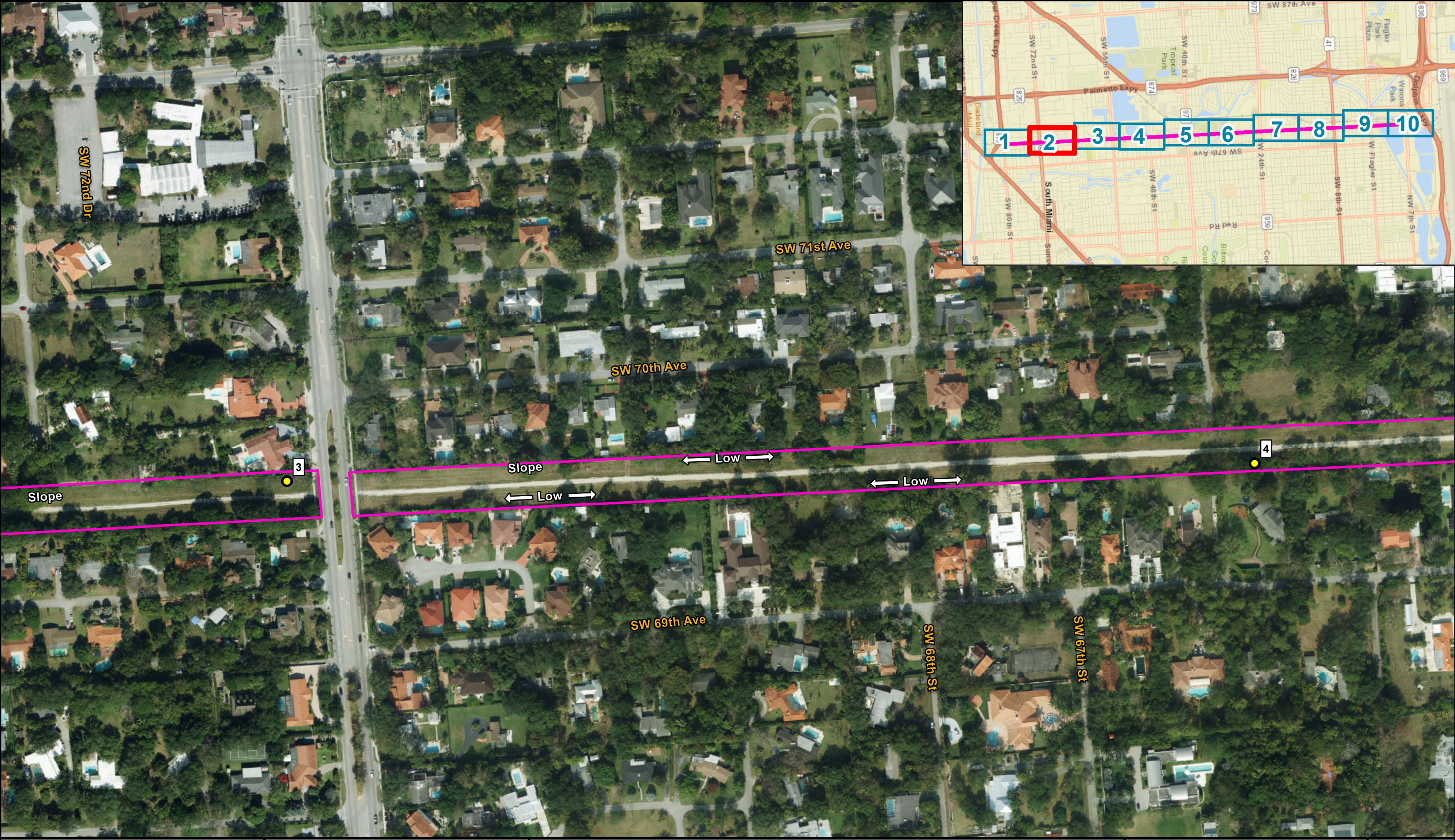
**APPENDIX D:**  
**LOCATION OF SHOVEL TESTS AND CURRENT CONDITIONS**









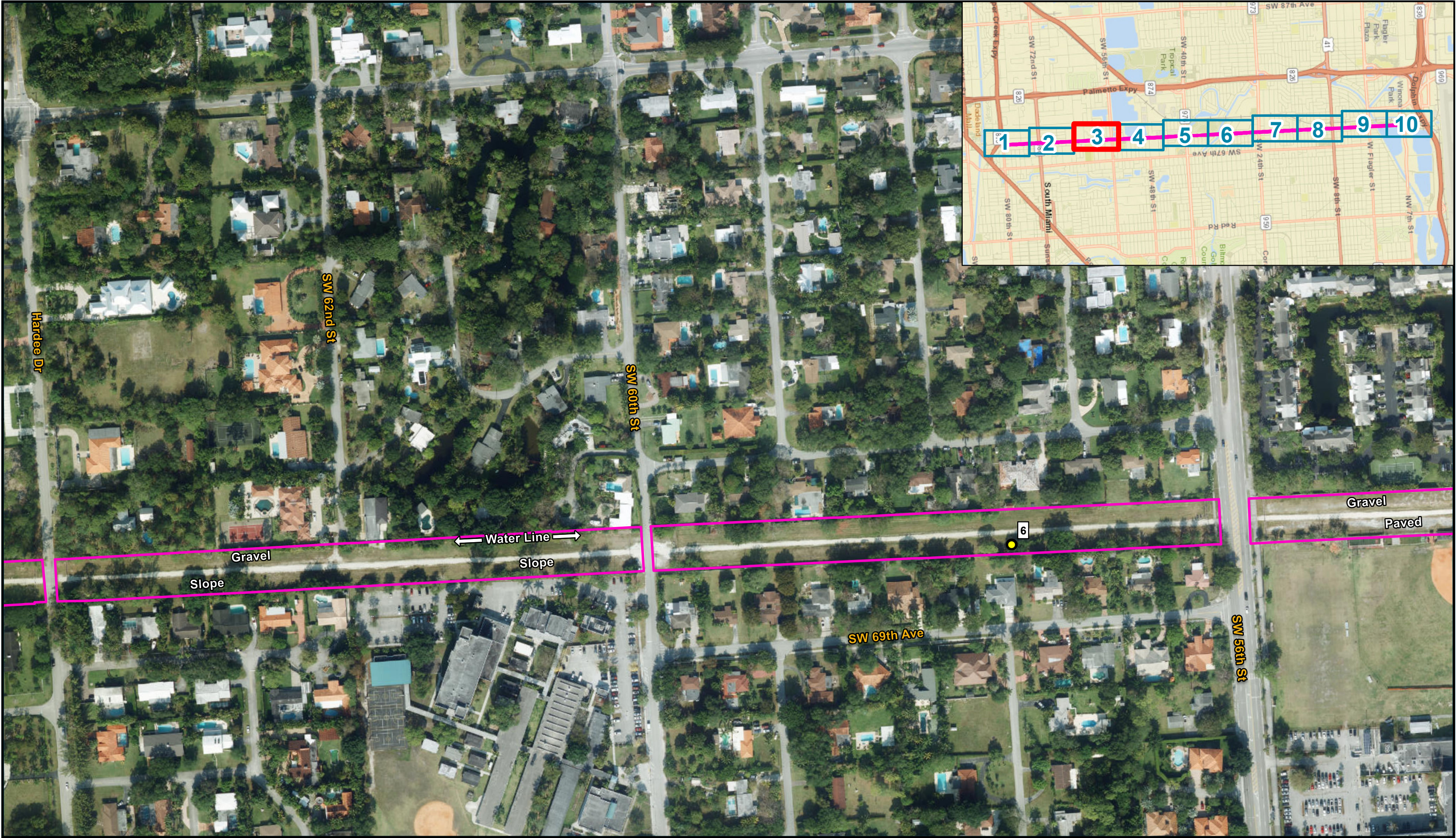
<p>Location of Shovel Tests and Current Conditions</p>	<p>Ludlam Trail Corridor Project PD&amp;E Study (444236-1-22-01)</p>	<p> Project APE</p> <p> Negative Shovel Test</p>	<p>Miami-Dade County</p> <p>  Meters</p>	<p>Map 1</p>
--	--	--	--	------------------







<p>Location of Shovel Tests and Current Conditions</p>	<p>Ludlam Trail Corridor Project PD&amp;E Study (444236-1-22-01)</p>	<p> Project APE</p> <p> Negative Shovel Test</p>	<p>Miami-Dade County</p> <p>  Meters</p>	<p>Map 2</p>
--	--	--	--	------------------

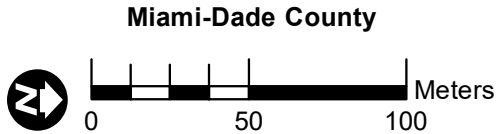




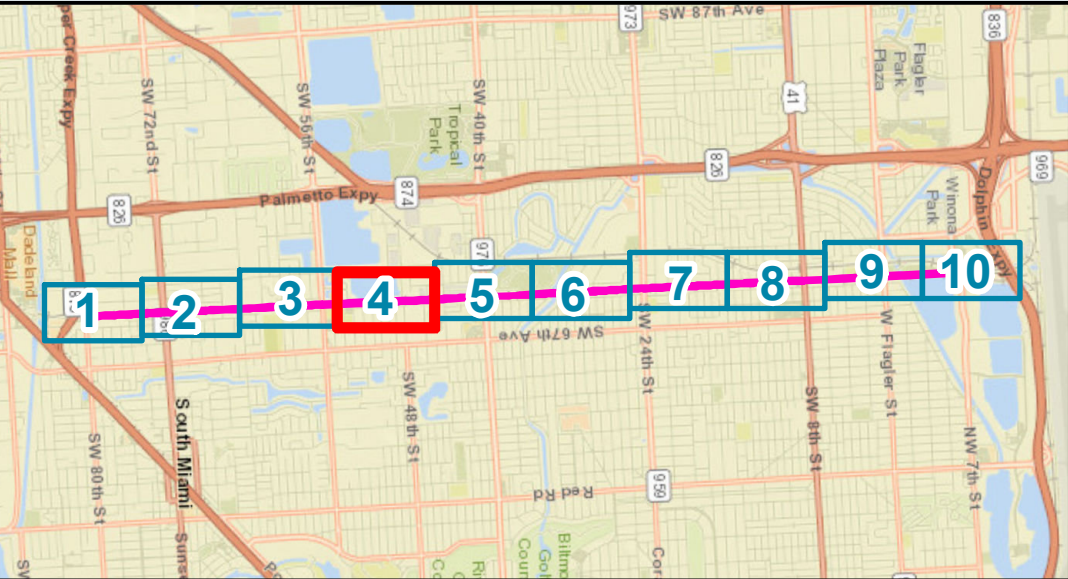
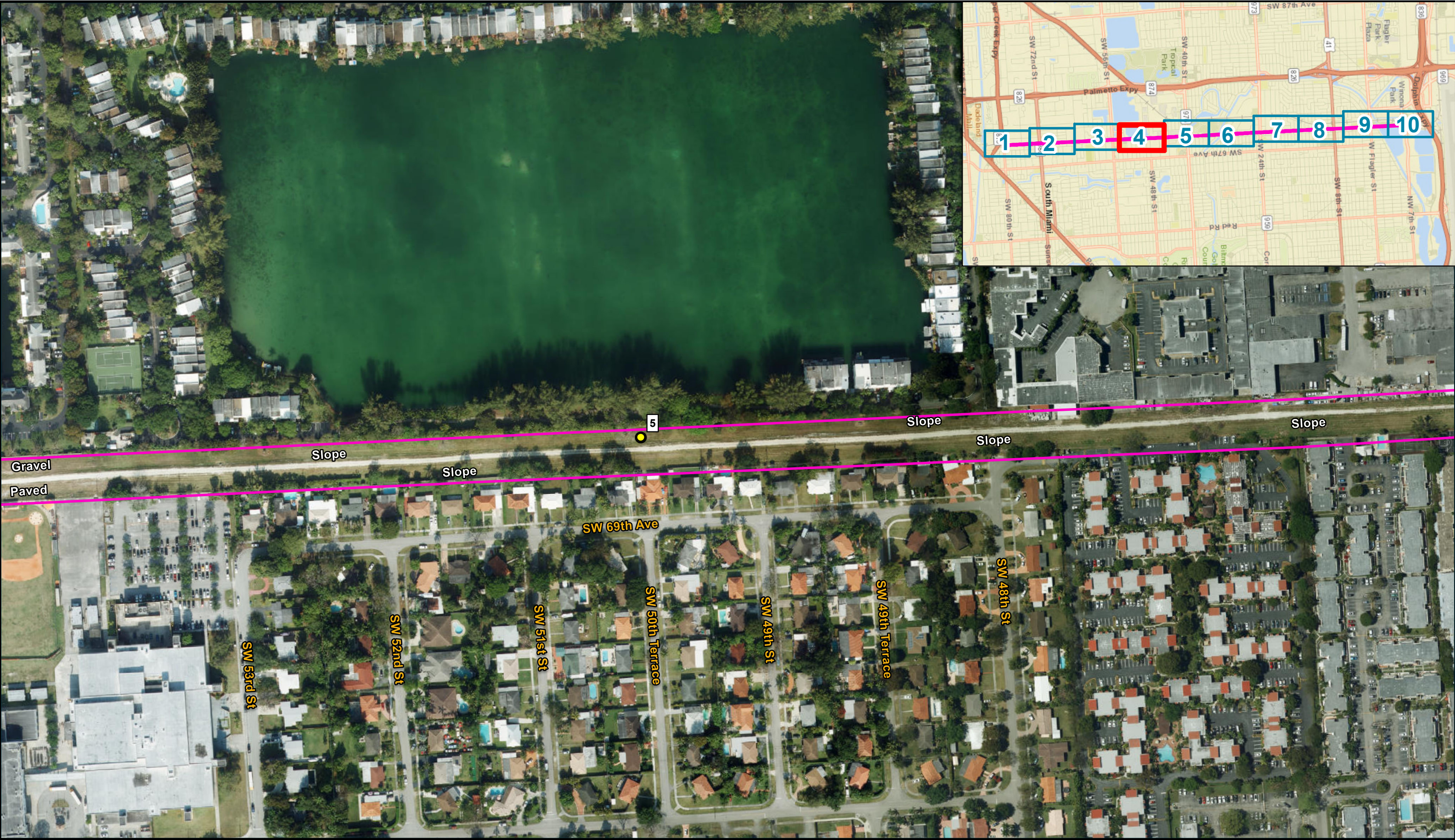
**Location of Shovel Tests  
and Current Conditions**

*Ludlam Trail Corridor  
Project PD&E Study  
(444236-1-22-01)*

-  Project APE
-  Negative Shovel Test









**Location of Shovel Tests  
and Current Conditions**

Ludlam Trail Corridor  
Project PD&E Study  
(444236-1-22-01)

-  Project APE
-  Negative Shovel Test

