

# APPENDIX B

## Utility Correspondence

Appendix B – Correspondence with:

AT&T FL

AT&T Corp

Atlantic Broadband

CenturyLink Level 3 (Lumen)

Comcast

Crown Castle

Fiberlight (Atlantic Broadband)

Florida City Gas

Florida Gas Transmission

FPL Distribution

FPL Transmission

Hotwire

MCI/Verizon

Miami-Dade County Public Schools

Miami-Dade DTPW

Miami-Dade ITD

Miami-Dade Traffic Signals Dept

Miami-Dade WASD

## Denty, Grant

---

**From:** Boucle, Julio  
**Sent:** Thursday, April 1, 2021 3:44 PM  
**To:** Denty, Grant  
**Cc:** King, Jenn  
**Subject:** FW: Ludlam Corridor - AT&T Florida Facilities  
**Attachments:** Location Map.pdf; 2018-10-17\_Basemap\_Ludlam\_Uilities.pdf; AT&T Distribution-Florida-Initial Utility Contact.pdf

**Importance:** High

Email addressed to Steve Low.

---

**From:** Sandoval, Ana <ana.sandoval@aecom.com>  
**Sent:** Thursday, February 21, 2019 3:08 PM  
**To:** sl4504@att.com  
**Cc:** Boucle, Julio <julio.boucle@aecom.com>  
**Subject:** FW: Ludlam Corridor - AT&T Florida Facilities  
**Importance:** High

Good afternoon Steve,

I'm following up on the below request from Alissa. We're still in need of this information. Your help would be greatly appreciated. Please let me know if you have any questions.

Thanks,

**Ana Sandoval, P.E.**  
Senior Project Manager  
D 1-305-514-2420  
[ana.sandoval@aecom.com](mailto:ana.sandoval@aecom.com)

**AECOM**  
7650 Corporate Center Drive, Suite 400, Miami, Florida 33126-1220  
T 1-305-262-7466 F 1-305-261-4017  
[www.aecom.com](http://www.aecom.com)

---

**From:** Turtletaub, Alissa (MDPR) [<mailto:Alissa.Turtletaub@miamidade.gov>]  
**Sent:** Monday, October 22, 2018 3:52 PM  
**To:** [sl4504@att.com](mailto:sl4504@att.com)  
**Cc:** Kuhn, Nick; Boucle, Julio; Sandoval, Ana; Heinicke, Mark (MDPR)  
**Subject:** Ludlam Corridor - AT&T Florida Facilities

Good afternoon,

The Miami-Dade County Parks, Recreation and Open Spaces (MDPROS) Department is in the development phase for evaluation of design alternatives and final location design approval relating to the Ludlam Trail.

To assist us in selection of the most feasible design alternative while minimizing conflicts with your facilities, your input is needed. This request is separate and distinct from the request for assignment of any existing license agreement or other agreements, forwarded recently by FECI affiliates FECI LT1, LLC and LR13-18, LLC.

Please indicate on the attached maps your principal existing and proposed facilities and return a completed marked up set via email or by mail to the following address. Along with the plans, please present any general concerns and/or comments that would be useful in MDPROS' evaluation process.

**AECOM Technical Services, Inc.**  
**Attn: Ana Sandoval, PE**  
**7650 Corporate Center Drive, Suite 200**  
**Miami, Florida 33126**  
[ana.sandoval@aecom.com](mailto:ana.sandoval@aecom.com)

If your facilities are located on compensable property interests within the limits of this project, you may be eligible to have your relocation costs reimbursed by MDPROS. If you have any of the above interests, please mark the approximate boundaries of them on the enclosed set of plans and return to the address above, together with documentation of your interests and a preliminary cost estimate.

Include in your transmittal, on utility agency/owner letterhead, a statement as to whether or not you will claim reimbursement and on what basis your claim is supported. Note that the information provided at this time will be used only for evaluation of design alternatives and does not constitute a claim.

Please note that failure to respond to this request will result in plans development without identification of your facilities. In order to maintain project schedules, please return the marked-up plans with your transmittal to the address above by November 30, 2018.

Should additional information be required, please contact me at 305-755-7952. Your cooperation in this matter is appreciated.

Sincerely,

**Alissa Turtletaub, M.S.**

**Senior Planner, Planning and Design Excellence**  
**Miami Dade County Parks, Recreation and Open Spaces**  
275 NW 2nd Street, 4th Floor, Miami, Florida 33128  
305-755-7952 Phone ~ 305-755-7864 Fax  
[alissa@miamidade.gov](mailto:alissa@miamidade.gov)

[www.miamidade.gov/parks](http://www.miamidade.gov/parks)  
**"Delivering Excellence Every Day"**



Appendix B – Correspondence with:

AT&T FL

AT&T Corp

Atlantic Broadband

CenturyLink Level 3 (Lumen)

Comcast

Crown Castle

Fiberlight (Atlantic Broadband)

Florida City Gas

Florida Gas Transmission

FPL Distribution

FPL Transmission

Hotwire

MCI/Verizon

Miami-Dade County Public Schools

Miami-Dade DTPW

Miami-Dade ITD

Miami-Dade Traffic Signals Dept

Miami-Dade WASD



---

Engineering Office – Orlando

6000 Metro West Blvd.  
Suite 201  
Orlando, FL 32835-7631  
Phone: (407) 578-8000  
Fax: (407) 578-7300  
Email: [seriksson@pea-inc.net](mailto:seriksson@pea-inc.net)

November 14, 2018

Miami Dade County Park, Recreation and Open Spaces  
Attn: Ms. Alissa Turtleaub  
275 NW 2<sup>nd</sup> St, 4<sup>th</sup> Floor  
Miami, FL 33128  
(786) 755-7952

**RE: Proposed Ludlam Trail Project  
Miami Dade County**

TCA, LLC has a conduit system with high capacity fiber optic cable located within the above project limits. TCA, LLC records have been reviewed and based on Preliminary Plans received on 10/23/2018 No Conflict is anticipated with proposed construction at this time. Please send updated plans to this office as they become available. If you have any questions please call us at (407) 578-8000

Sincerely,

A handwritten signature in black ink, appearing to read "Stefan Eriksson", is written over a circular stamp or seal.

Stefan Eriksson  
Assistant Project Engineer

SGE/CM 08-04-001  
Cc: M. Ayo (TCG South Florida)  
File

Orlando, FL



---

Engineering Office – Orlando

6000 Metro West Blvd.  
Suite 201  
Orlando, FL 32835-7631  
Phone: (407) 578-8000  
Fax: (407) 578-7300  
Email: [seriksson@pea-inc.net](mailto:seriksson@pea-inc.net)


November 14, 2018

Miami Dade County Park, Recreation and Open Spaces  
Attn: Ms. Alissa Turtleaub  
275 NW 2<sup>nd</sup> St, 4<sup>th</sup> Floor  
Miami, FL 33128  
(786) 755-7932

**RE: Proposed Ludlam Trail Project  
Miami Dade County**

**AT&T Corp Long Line (Transmission)** has no facilities located within the  
Above project limits. No Involvement is anticipated.

Sincerely,



Stefan Eriksson  
Assistant Project Engineer

SGE/CM 18-01-001  
Cc: G. Jacobson (AT&T Corp)  
File

Orlando, FL



October 22, 2018

**AT&T**

**Attn: Mr. Craig Petrie**

**P.E.A. of Florida**

**6000 Metro West Blvd., #201**

**Orlando, FL 32835**

[cpetrie@pea-inc.net](mailto:cpetrie@pea-inc.net)

**ADJUSTMENT OF UTILITIES – FLORIDA STATUTES CHAPTER 337.403**

Project Description: Project Development and Environment Study for Ludlam Trail  
Project Location: Former railroad corridor from SW 80<sup>th</sup> Street to NW 7<sup>th</sup> Street at approximately  
NW/SW 69<sup>th</sup> Avenue  
Project Number: 403502-15-001-14470619  
ETDM Number: 14369  
County: Miami-Dade

Dear Sir/Madame:

The Miami-Dade County Parks, Recreation and Open Spaces (MDPROS) Department is in the development phase for evaluation of design alternatives and final location design approval relating to the Ludlam Trail.

To assist us in selection of the most feasible design alternative while minimizing conflicts with your facilities, your input is needed. This request is separate and distinct from the request for assignment of any existing license agreement or other agreements, forwarded recently by FECI affiliates FECI LT1, LLC and LR13-18, LLC.

Please indicate on the attached maps your principal existing and proposed facilities and return a completed marked up set via email or by mail to the following address. Along with the plans, please present any general concerns and/or comments that would be useful in MDPROS' evaluation process.

**AECOM Technical Services, Inc.**  
**Attn: Ana Sandoval, PE**  
**7650 Corporate Center Drive, Suite 200**  
**Miami, Florida 33126**  
[ana.sandoval@aecom.com](mailto:ana.sandoval@aecom.com)

If your facilities are located on compensable property interests within the limits of this project, you may be eligible to have your relocation costs reimbursed by MDPROS. If you have any of the above interests, please mark the approximate boundaries of them on the enclosed set of plans and return to the address above, together with documentation of your interests and a preliminary cost estimate.

Include in your transmittal, on utility agency/owner letterhead, a statement as to whether or not you will claim reimbursement and on what basis your claim is supported. Note that the information provided at this time will be used only for evaluation of design alternatives and does not constitute a claim.



Please note that failure to respond to this request will result in plans development without identification of your facilities. In order to maintain project schedules, please return the marked-up plans with your transmittal to the address above by November 30, 2018.

Should additional information be required, please contact me at 305-755-7952. Your cooperation in this matter is appreciated.

Sincerely,

*Alissa Turtletaub*

Alissa Turtletaub, M.S.

Senior Planner, Planning and Design Excellence  
Miami Dade County Parks, Recreation and Open Spaces  
275 NW 2<sup>nd</sup> Street, 4th Floor, Miami, Florida 33128  
305-755-7952 Phone – 305-755-7864 Fax  
[alissa@miamidade.gov](mailto:alissa@miamidade.gov)

[www.miamidade.gov/parks](http://www.miamidade.gov/parks)

*"Delivering Excellence Every Day"*

Should additional information be required, please contact me at 305-755-7952. Your cooperation in this matter is appreciated.

Sincerely,

**Alissa Turteltaub, M.S.**

**Senior Planner, Planning and Design Excellence**  
**Miami Dade County Parks, Recreation and Open Spaces**  
275 NW 2nd Street, 4th Floor, Miami, Florida 33128  
305-755-7952 Phone ~ 305-755-7864 Fax  
[alisa@miamidade.gov](mailto:alisa@miamidade.gov)

[www.miamidade.gov/parks](http://www.miamidade.gov/parks)  
**"Delivering Excellence Every Day"**

**stefan eriksson**

---

**From:** Craig Petrie [cpetrie@pea-inc.net]  
**Sent:** Monday, October 22, 2018 3:26 PM  
**To:** 'stefan eriksson'; Christina Meyer  
**Subject:** FW: Ludlam Corridor - AT&T Facilities  
**Attachments:** Location Map.pdf; 2018-10-17\_Basemap\_Ludlam\_Uilities.pdf; Atlantic Broadband-Initial Utility Contact.pdf

Process for response please.

**From:** Turtletaub, Alissa (MDPR) <[Alissa.Turtletaub@miamidade.gov](mailto:Alissa.Turtletaub@miamidade.gov)>  
**Sent:** Monday, October 22, 2018 3:23 PM  
**To:** [cpetrie@pea-inc.net](mailto:cpetrie@pea-inc.net); [peasl@pea-inc.net](mailto:peasl@pea-inc.net)  
**Cc:** Kuhn, Nick <[Nick.Kuhn@aecom.com](mailto:Nick.Kuhn@aecom.com)>; Boucle, Julio <[julio.boucle@aecom.com](mailto:julio.boucle@aecom.com)>; Sandoval, Ana <[ana.sandoval@aecom.com](mailto:ana.sandoval@aecom.com)>; Heinicke, Mark (MDPR) <[Mark.Heinicke@miamidade.gov](mailto:Mark.Heinicke@miamidade.gov)>  
**Subject:** Ludlam Corridor - AT&T Facilities

Good afternoon,

The Miami-Dade County Parks, Recreation and Open Spaces (MDPROS) Department is in the development phase for evaluation of design alternatives and final location design approval relating to the Ludlam Trail.

To assist us in selection of the most feasible design alternative while minimizing conflicts with your facilities, your input is needed. This request is separate and distinct from the request for assignment of any existing license agreement or other agreements, forwarded recently by FECI affiliates FECI LT1, LLC and LR13-18, LLC.

Please indicate on the attached maps your principal existing and proposed facilities and return a completed marked up set via email or by mail to the following address. Along with the plans, please present any general concerns and/or comments that would be useful in MDPROS' evaluation process.

**AECOM Technical Services, Inc.**  
**Attn: Ana Sandoval, PE**  
**7650 Corporate Center Drive, Suite 200**  
**Miami, Florida 33126**  
[ana.sandoval@aecom.com](mailto:ana.sandoval@aecom.com)

If your facilities are located on compensable property interests within the limits of this project, you may be eligible to have your relocation costs reimbursed by MDPROS. If you have any of the above interests, please mark the approximate boundaries of them on the enclosed set of plans and return to the address above, together with documentation of your interests and a preliminary cost estimate.

Include in your transmittal, on utility agency/owner letterhead, a statement as to whether or not you will claim reimbursement and on what basis your claim is supported. Note that the information provided at this time will be used only for evaluation of design alternatives and does not constitute a claim.

Please note that failure to respond to this request will result in plans development without identification of your facilities. In order to maintain project schedules, please return the marked-up plans with your transmittal to the address above by November 30, 2018.

Appendix B – Correspondence with:

AT&T FL

AT&T Corp

Atlantic Broadband

CenturyLink Level 3 (Lumen)

Comcast

Crown Castle

Fiberlight (Atlantic Broadband)

Florida City Gas

Florida Gas Transmission

FPL Distribution

FPL Transmission

Hotwire

MCI/Verizon

Miami-Dade County Public Schools

Miami-Dade DTPW

Miami-Dade ITD

Miami-Dade Traffic Signals Dept

Miami-Dade WASD



## Sandoval, Ana

---

**From:** Freytag, Pete <pfreytag@atlanticbb.com>  
**Sent:** Thursday, March 07, 2019 1:17 PM  
**To:** Sandoval, Ana  
**Cc:** Segovia, Julio  
**Subject:** RE: Ludlam Corridor - Atlantic Broadband Facilities  
**Attachments:** South Miami ABB - FEC Railroad Crossings.pdf

Good afternoon Ana,

Attached are the requested markups for your review as requested?

Atlantic Broadband has mutable FEC crossings going from West to East & North & South located within your proposed project.

We are attached to the Florida Power & Light power poles & 1 underground crossing within the FEC railway.

Please advise if any of these attachments are in conflict with your proposed project?

If so, then Atlantic Broadband would need to file the UAO work schedules and relocation payments of overhead & underground facilities.

If you have any questions, please call me.

Thank you.

Pete Freytag  
SR. Construction Manager  
Atlantic Broadband  
1959 71<sup>st</sup> ST  
Miami Beach, FL 33141  
pfreytag@atlanticbb.com  
305.861.8069 x 5208 Office  
305.865.9845 Fax



---

**From:** Sandoval, Ana [mailto:ana.sandoval@aecom.com]  
**Sent:** Friday, February 22, 2019 2:14 PM  
**To:** Freytag, Pete <pfreytag@atlanticbb.com>  
**Subject:** RE: Ludlam Corridor - Atlantic Broadband Facilities

Ok. Thanks for the update.

**Ana Sandoval, P.E.**  
Senior Project Manager  
D 1-305-514-2420  
[ana.sandoval@aecom.com](mailto:ana.sandoval@aecom.com)

**AECOM**

7650 Corporate Center Drive, Suite 400, Miami, Florida 33126-1220

T 1-305-262-7466 F 1-305-261-4017

[www.aecom.com](http://www.aecom.com)

---

**From:** Freytag, Pete [<mailto:pfreytag@atlanticbb.com>]**Sent:** Friday, February 22, 2019 2:12 PM**To:** Sandoval, Ana**Cc:** Boucle, Julio**Subject:** RE: Ludlam Corridor - Atlantic Broadband Facilities

Good afternoon,

I'm still trying to finish these up.

Thank you.

Pete Freytag

SR. Construction Manager

Atlantic Broadband

1959 71<sup>st</sup> ST

Miami Beach, FL 33141

[pfreytag@atlanticbb.com](mailto:pfreytag@atlanticbb.com)

305.861.8069 x 5208 Office

305.865.9845 Fax



---

**From:** Sandoval, Ana [<mailto:ana.sandoval@aecom.com>]**Sent:** Thursday, February 21, 2019 3:28 PM**To:** Freytag, Pete <[pfreytag@atlanticbb.com](mailto:pfreytag@atlanticbb.com)>**Cc:** Boucle, Julio <[julio.boucle@aecom.com](mailto:julio.boucle@aecom.com)>**Subject:** FW: Ludlam Corridor - Atlantic Broadband Facilities

Good afternoon,

I'm following up on the below request from the Miami-Dade County Parks, Recreation and Open Spaces (MDPROS) Department. We're still in need of this information. Your assistance with this request would be greatly appreciated. Please let me know if you have any questions.

Thanks,

**Ana Sandoval, P.E.**

Senior Project Manager

D 1-305-514-2420

[ana.sandoval@aecom.com](mailto:ana.sandoval@aecom.com)

**AECOM**

7650 Corporate Center Drive, Suite 400, Miami, Florida 33126-1220

T 1-305-262-7466 F 1-305-261-4017

[www.aecom.com](http://www.aecom.com)

---

**From:** Sandoval, Ana**Sent:** Friday, November 30, 2018 2:48 PM**To:** [pfreytag@atlanticbb.com](mailto:pfreytag@atlanticbb.com)

**Cc:** Turtletaub, Alissa (MDPR) ([Alissa.Turtletaub@miamidade.gov](mailto:Alissa.Turtletaub@miamidade.gov)); Heinicke, Mark (MDPR); Kuhn, Nick; Boucle, Julio  
**Subject:** FW: Ludlam Corridor - Atlantic Broadband Facilities

Good afternoon Mr. Freytag,

This is just a reminder that your prompt attention is needed on the below request. Please let me know if you have any questions.

Thank you very much.

**Ana Sandoval, P.E.**  
Senior Project Manager  
D 1-305-514-2420  
[ana.sandoval@aecom.com](mailto:ana.sandoval@aecom.com)

**AECOM**  
7650 Corporate Center Drive, Suite 400, Miami, Florida 33126-1220  
T 1-305-262-7466 F 1-305-261-4017  
[www.aecom.com](http://www.aecom.com)

---

**From:** Turtletaub, Alissa (MDPR) [<mailto:Alissa.Turtletaub@miamidade.gov>]  
**Sent:** Monday, October 22, 2018 3:20 PM  
**To:** [pfreytag@atlanticbb.com](mailto:pfreytag@atlanticbb.com)  
**Cc:** Kuhn, Nick; Boucle, Julio; Sandoval, Ana; Heinicke, Mark (MDPR)  
**Subject:** Ludlam Corridor - Atlantic Broadband Facilities

Good afternoon,

The Miami-Dade County Parks, Recreation and Open Spaces (MDPROS) Department is in the development phase for evaluation of design alternatives and final location design approval relating to the Ludlam Trail.

To assist us in selection of the most feasible design alternative while minimizing conflicts with your facilities, your input is needed. This request is separate and distinct from the request for assignment of any existing license agreement or other agreements, forwarded recently by FECI affiliates FECI LT1, LLC and LR13-18, LLC.

Please indicate on the attached maps your principal existing and proposed facilities and return a completed marked up set via email or by mail to the following address. Along with the plans, please present any general concerns and/or comments that would be useful in MDPROS' evaluation process.

**AECOM Technical Services, Inc.**  
**Attn: Ana Sandoval, PE**  
**7650 Corporate Center Drive, Suite 200**  
**Miami, Florida 33126**  
[ana.sandoval@aecom.com](mailto:ana.sandoval@aecom.com)

If your facilities are located on compensable property interests within the limits of this project, you may be eligible to have your relocation costs reimbursed by MDPROS. If you have any of the above interests, please mark the approximate boundaries of them on the enclosed set of plans and return to the address above, together with documentation of your interests and a preliminary cost estimate.

Include in your transmittal, on utility agency/owner letterhead, a statement as to whether or not you will claim reimbursement and on what basis your claim is supported. Note that the information provided at this time will be used only for evaluation of design alternatives and does not constitute a claim.

Please note that failure to respond to this request will result in plans development without identification of your facilities. In order to maintain project schedules, please return the marked-up plans with your transmittal to the address above by November 30, 2018.

Should additional information be required, please contact me at 305-755-7952. Your cooperation in this matter is appreciated.

Sincerely,

**Alissa Turtletaub, M.S.**

**Senior Planner, Planning and Design Excellence**  
**Miami Dade County Parks, Recreation and Open Spaces**  
275 NW 2nd Street, 4th Floor, Miami, Florida 33128  
305-755-7952 Phone ~ 305-755-7864 Fax  
[alissa@miamidade.gov](mailto:alissa@miamidade.gov)

[www.miamidade.gov/parks](http://www.miamidade.gov/parks)  
**"Delivering Excellence Every Day"**

Appendix B – Correspondence with:

AT&T FL

AT&T Corp

Atlantic Broadband

CenturyLink Level 3 (Lumen)

Comcast

Crown Castle

Fiberlight (Atlantic Broadband)

Florida City Gas

Florida Gas Transmission

FPL Distribution

FPL Transmission

Hotwire

MCI/Verizon

Miami-Dade County Public Schools

Miami-Dade DTPW

Miami-Dade ITD

Miami-Dade Traffic Signals Dept

Miami-Dade WASD

**From:** [Rypkema, Xan](#)  
**To:** [Mairena, David](#)  
**Subject:** NO Facilities 403502-15-001-14470619, Ludlam Corridor,  
**Date:** Tuesday, June 11, 2019 7:01:39 PM  
**Attachments:** [image001.png](#)  
[map 4.pdf](#)  
[map 5.pdf](#)  
[map 1.pdf](#)  
[map 2.pdf](#)  
[map 3.pdf](#)

---

No facilities:

CenturyLink Communications, LLC (National Fiber Optic longhaul/metro network) has received your utility notice. After reviewing the information you provided it has been determined that CenturyLink does not have facilities within the scope of the Project. Therefore it will not be necessary for CenturyLink to relocate or adjust the facilities.

Any changes or additions to the Project plans or parameters should be submitted to CenturyLink for review of potential new impacts to the CenturyLink facilities. Please reference the file number **157626 FL** with any future communications.

Please make certain that you coordinate with your local Call Before You Dig program to identify any other utilities in the area of your project.

Thank you,

**Xan Marie Rypkema**

Business Analyst

Relocations Department

CenturyLink

1025 Eldorado Blvd

Broomfield CO 80021

p: 720.888.1089

e: [xan.rypkema@centurylink.com](mailto:xan.rypkema@centurylink.com)



[NationalRelo@centurylink.com](mailto:NationalRelo@centurylink.com)

*\*Please send all future utility requests via e-mail to [NationalRelo@centurylink.com](mailto:NationalRelo@centurylink.com) with a detailed letter stating the project information and any existing plans. Electronic copies (opposed to physical copies) ensure efficient and accelerated communication between both parties. If there are outstanding circumstances in which this request cannot be met, please advise us of such. We appreciate you*

This communication is the property of CenturyLink and may contain confidential or privileged information. Unauthorized use of this communication is strictly prohibited and may be unlawful. If you have received this communication in error, please immediately notify the sender by reply e-mail and destroy all copies of the communication and any attachments.

Appendix B – Correspondence with:

AT&T FL

AT&T Corp

Atlantic Broadband

CenturyLink Level 3 (Lumen)

Comcast

Crown Castle

Fiberlight (Atlantic Broadband)

Florida City Gas

Florida Gas Transmission

FPL Distribution

FPL Transmission

Hotwire

MCI/Verizon

Miami-Dade County Public Schools

Miami-Dade DTPW

Miami-Dade ITD

Miami-Dade Traffic Signals Dept

Miami-Dade WASD

## Sandoval, Ana

---

**From:** Sabrina Lopez <slopez@prgconsulting.net>  
**Sent:** Wednesday, April 24, 2019 12:29 PM  
**To:** Sandoval, Ana  
**Cc:** leonard\_maxwell-newbold@cable.comcast.com; Joyner, Bo; Jose-FL\_Martinez@cable.comcast.com; Gerardo\_Sossa@comcast.com  
**Subject:** Mark Up- TNMU (00401) Ludlam Corridor - Comcast Facilities  
**Attachments:** 2018-10-17\_Basemap\_Ludlam\_Uilities.pdf; Comcast Cable-Initial Utility Contact.pdf; Location Map.pdf

Good morning Ana

I have attached the above mentioned request for review. Comcast has aerial and underground facilities along the proposed route. Please feel free to contact me should further information be needed on this. Thank you and have a great day.



**Leonard Maxwell-Newbold**  
**Tech 3 Network Engineering / Regional Permit Manager**  
**2601 SW 145<sup>th</sup> Avenue Miramar, Florida 33027**  
**1-754-221-1254 office number / 1-954-444-5113 mobile number**  
[Leonard\\_maxwell-newbold@cable.comcast.com](mailto:leonard_maxwell-newbold@cable.comcast.com)

---

**From:** Sabrina Lopez <[slopez@prgconsulting.net](mailto:slopez@prgconsulting.net)>  
**Sent:** Monday, April 8, 2019 1:36 PM  
**To:** [ana@srs-corp.com](mailto:ana@srs-corp.com)  
**Cc:** 'Maxwell-Newbold, Leonard' <[leonard\\_maxwell-newbold@comcast.com](mailto:leonard_maxwell-newbold@comcast.com)>; 'Sherell' <[Sherell\\_McKay2@comcast.com](mailto:Sherell_McKay2@comcast.com)>; Joyner, Bo <[Bo\\_Joyner2@comcast.com](mailto:Bo_Joyner2@comcast.com)>  
**Subject:** TNMU (00401) Ludlam Corridor - Comcast Facilities

Please complete and return by the end of this week  
( **04/12/2019\_lmn** )



## Mark-Up Request of Comcast Existing Facilities\_04/08/2019

We're in receipt of your request for the location of our existing facilities within the scope of your project.

We will proceed with a mark-up of our existing plant, based on our current design.

Please allow ( 2 ) weeks to respond.

### Based on the results of the mark-up:

- A. If there're no conflicts a letter of no objection will be provided.
- B. If a conflict is discovered that may result in the relocation and or the removal of our facilities, additional coordination will be required with the **Comcast Area Construction Coordinator..**

Please feel free to contact me should you have any additional questions or concerns.



**Leonard Maxwell-Newbold**

**Tech 3 Network Engineering / Regional Permit Manager**

**2601 SW 145<sup>th</sup> Avenue Miramar, Florida 33027**

**1-754-221-1254 office number / 1-954-444-5113 mobile number**

**[Leonard\\_maxwell-newbold@cable.comcast.com](mailto:leonard_maxwell-newbold@cable.comcast.com)**

---

**From:** Sandoval, Ana <[ana.sandoval@aecom.com](mailto:ana.sandoval@aecom.com)>

**Sent:** Thursday, February 21, 2019 3:18 PM

**To:** Maxwell-Newbold, Leonard <[leonard\\_maxwell-newbold@cable.comcast.com](mailto:leonard_maxwell-newbold@cable.comcast.com)>

**Cc:** Boucle, Julio <[julio.boucle@aecom.com](mailto:julio.boucle@aecom.com)>

**Subject:** [EXTERNAL] FW: Ludlam Corridor - Comcast Facilities

Good afternoon,

I'm following up on the below request from the Miami-Dade County Parks, Recreation and Open Spaces (MDPROS) Department. We're still in need of this information. Your assistance with this request would be greatly appreciated. Please let me know if you have any questions.

Thanks,

**Ana Sandoval, P.E.**  
Senior Project Manager  
D 1-305-514-2420  
[ana.sandoval@aecom.com](mailto:ana.sandoval@aecom.com)

**AECOM**  
7650 Corporate Center Drive, Suite 400, Miami, Florida 33126-1220  
T 1-305-262-7466 F 1-305-261-4017  
[www.aecom.com](http://www.aecom.com)

---

**From:** Sandoval, Ana  
**Sent:** Friday, November 30, 2018 2:51 PM  
**To:** 'Leonard\_Maxwell-Newbold@cable.comcast.com'  
**Cc:** Turtletaub, Alissa (MDPR) ([Alissa.Turtletaub@miamidade.gov](mailto:Alissa.Turtletaub@miamidade.gov)); Heinicke, Mark (MDPR) <[Mark.Heinicke@miamidade.gov](mailto:Mark.Heinicke@miamidade.gov)>; Kuhn, Nick; Boucle, Julio ([julio.boucle@aecom.com](mailto:julio.boucle@aecom.com))  
**Subject:** FW: Ludlam Corridor - Comcast Facilities

Good afternoon,

This is just a reminder that your prompt attention is needed on the below request. Please let me know if you have any questions.

Thank you very much.

**Ana Sandoval, P.E.**  
Senior Project Manager  
D 1-305-514-2420  
[ana.sandoval@aecom.com](mailto:ana.sandoval@aecom.com)

**AECOM**  
7650 Corporate Center Drive, Suite 400, Miami, Florida 33126-1220  
T 1-305-262-7466 F 1-305-261-4017  
[www.aecom.com](http://www.aecom.com)

---

**From:** Turtletaub, Alissa (MDPR) [<mailto:Alissa.Turtletaub@miamidade.gov>]  
**Sent:** Monday, October 22, 2018 3:27 PM  
**To:** [Leonard\\_Maxwell-Newbold@cable.comcast.com](mailto:Leonard_Maxwell-Newbold@cable.comcast.com)  
**Cc:** Kuhn, Nick; Boucle, Julio; Sandoval, Ana; Heinicke, Mark (MDPR)  
**Subject:** Ludlam Corridor - Comcast Facilities

Good afternoon,

The Miami-Dade County Parks, Recreation and Open Spaces (MDPROS) Department is in the development phase for evaluation of design alternatives and final location design approval relating to the Ludlam Trail.

To assist us in selection of the most feasible design alternative while minimizing conflicts with your facilities, your input is needed. This request is separate and distinct from the request for assignment of any existing license agreement or other agreements, forwarded recently by FECI affiliates FECI LT1, LLC and LR13-18, LLC.

Please indicate on the attached maps your principal existing and proposed facilities and return a completed marked up set via email or by mail to the following address. Along with the plans, please present any general concerns and/or comments that would be useful in MDPROS' evaluation process.

**AECOM Technical Services, Inc.**  
**Attn: Ana Sandoval, PE**  
**7650 Corporate Center Drive, Suite 200**  
**Miami, Florida 33126**  
[ana.sandoval@aecom.com](mailto:ana.sandoval@aecom.com)

If your facilities are located on compensable property interests within the limits of this project, you may be eligible to have your relocation costs reimbursed by MDPROS. If you have any of the above interests, please mark the approximate boundaries of them on the enclosed set of plans and return to the address above, together with documentation of your interests and a preliminary cost estimate.

Include in your transmittal, on utility agency/owner letterhead, a statement as to whether or not you will claim reimbursement and on what basis your claim is supported. Note that the information provided at this time will be used only for evaluation of design alternatives and does not constitute a claim.

Please note that failure to respond to this request will result in plans development without identification of your facilities. In order to maintain project schedules, please return the marked-up plans with your transmittal to the address above by November 30, 2018.

Should additional information be required, please contact me at 305-755-7952. Your cooperation in this matter is appreciated.

Sincerely,

**Alissa Turtletaub, M.S.**

**Senior Planner, Planning and Design Excellence**  
**Miami Dade County Parks, Recreation and Open Spaces**  
275 NW 2nd Street, 4th Floor, Miami, Florida 33128  
305-755-7952 Phone ~ 305-755-7864 Fax  
[alissa@miamidade.gov](mailto:alissa@miamidade.gov)

[www.miamidade.gov/parks](http://www.miamidade.gov/parks)  
**"Delivering Excellence Every Day"**

This email and any files transmitted with it are confidential and intended solely for the use of the individual or entity to which they are addressed. If you have received this email in error please notify the system manager at [helpdesk@truenetcommunications.com](mailto:helpdesk@truenetcommunications.com). This message contains confidential information and is intended only for the individual named. If you are not the named addressee you should not disseminate, distribute or copy this e-mail. Please notify the sender immediately by e-mail if you have received this e-mail by mistake and delete

this e-mail from your system. If you are not the intended recipient you are notified that disclosing, copying, distributing or taking any action in reliance on the contents of this information is strictly prohibited.

Appendix B – Correspondence with:

AT&T FL

AT&T Corp

Atlantic Broadband

CenturyLink Level 3 (Lumen)

Comcast

Crown Castle

Fiberlight (Atlantic Broadband)

Florida City Gas

Florida Gas Transmission

FPL Distribution

FPL Transmission

Hotwire

MCI/Verizon

Miami-Dade County Public Schools

Miami-Dade DTPW

Miami-Dade ITD

Miami-Dade Traffic Signals Dept

Miami-Dade WASD

## Sandoval, Ana

---

**From:** Haskett, Danny <Danny.Haskett@crowncastle.com>  
**Sent:** Friday, February 22, 2019 11:56 AM  
**To:** Sandoval, Ana  
**Cc:** Alfonso, Osmani; Fiber Dig Facilities  
**Subject:** FW: Ludlam Corridor - Crown Castle Fiber Facilities  
**Attachments:** Location Map.pdf; Crown Castle Fiber-Initial Utility Contact.pdf; 403502-15-001-14470619-PD&E Study for Ludlam Trail-Miami-Marked PD&E Plans.pdf

Ana,

Fibernet Direct Florida, LLC, an affiliate of Crown Castle Fiber, has aerial and underground fiber optic facilities within or near the limits of the above-referenced project. Attached are the marked PD&E plans. Please advise if you believe we may have conflicts.

Crown Castle has no facilities within the limits of the above-referenced project. Please bear in mind that Fibernet Direct is now an affiliate of Crown Castle Fiber and that both Fibernet Direct and Crown Castle are part of the "Crown Castle Fiber" organization.

Regards, Danny

**DANNY HASKETT**  
Project Manager  
T: 786-610-7073 | M: 786-246-7827

**CROWN CASTLE FIBER**  
1601 NW 136<sup>th</sup> Avenue, Suite A-200, Sunrise, FL 33323  
[Fiber.CrownCastle.com](http://Fiber.CrownCastle.com)

---

**From:** Sandoval, Ana <ana.sandoval@aecom.com>  
**Sent:** Thursday, February 21, 2019 3:31 PM  
**To:** Haskett, Danny <Danny.Haskett@crowncastle.com>; Bytner, Becca <Becca.Bytner@crowncastle.com>  
**Cc:** Boucle, Julio <julio.boucle@aecom.com>  
**Subject:** FW: Ludlam Corridor - Crown Castle Fiber Facilities

**CAUTION:** This email originated from outside of the organization. Do not click links or open attachments unless you recognize the sender and know the content is safe.

Good afternoon,

I'm following up on the below request from the Miami-Dade County Parks, Recreation and Open Spaces (MDPROS) Department. We're still in need of this information. Your assistance with this request would be greatly appreciated. Please let me know if you have any questions.

Thanks,

Ana Sandoval, P.E.

Senior Project Manager  
D 1-305-514-2420  
[ana.sandoval@aecom.com](mailto:ana.sandoval@aecom.com)

**AECOM**

7650 Corporate Center Drive, Suite 400, Miami, Florida 33126-1220  
T 1-305-262-7466 F 1-305-261-4017  
[www.aecom.com](http://www.aecom.com)

---

**From:** Sandoval, Ana  
**Sent:** Friday, November 30, 2018 3:05 PM  
**To:** [danny.haskett@crowncastle.com](mailto:danny.haskett@crowncastle.com); [Rebecca.Caldwell@crowncastle.com](mailto:Rebecca.Caldwell@crowncastle.com)  
**Cc:** Turtletaub, Alissa (MDPR) ([Alissa.Turtletaub@miamidade.gov](mailto:Alissa.Turtletaub@miamidade.gov)); Heinicke, Mark (MDPR) <[Mark.Heinicke@miamidade.gov](mailto:Mark.Heinicke@miamidade.gov)>; Kuhn, Nick; Boucle, Julio ([julio.boucle@aecom.com](mailto:julio.boucle@aecom.com))  
**Subject:** FW: Ludlam Corridor - Crown Castle Fiber Facilities

Good afternoon,

This is just a reminder that your prompt attention is needed on the below request. Please let me know if you have any questions.

Thank you very much.

**Ana Sandoval, P.E.**  
Senior Project Manager  
D 1-305-514-2420  
[ana.sandoval@aecom.com](mailto:ana.sandoval@aecom.com)

**AECOM**

7650 Corporate Center Drive, Suite 400, Miami, Florida 33126-1220  
T 1-305-262-7466 F 1-305-261-4017  
[www.aecom.com](http://www.aecom.com)

---

**From:** Turtletaub, Alissa (MDPR) [<mailto:Alissa.Turtletaub@miamidade.gov>]  
**Sent:** Monday, October 22, 2018 3:42 PM  
**To:** [danny.haskett@crowncastle.com](mailto:danny.haskett@crowncastle.com); [Rebecca.Caldwell@crowncastle.com](mailto:Rebecca.Caldwell@crowncastle.com)  
**Cc:** Kuhn, Nick; Boucle, Julio; Sandoval, Ana; Heinicke, Mark (MDPR)  
**Subject:** Ludlam Corridor - Crown Castle Fiber Facilities

Good afternoon,

The Miami-Dade County Parks, Recreation and Open Spaces (MDPROS) Department is in the development phase for evaluation of design alternatives and final location design approval relating to the Ludlam Trail.

To assist us in selection of the most feasible design alternative while minimizing conflicts with your facilities, your input is needed. This request is separate and distinct from the request for assignment of any existing license agreement or other agreements, forwarded recently by FECI affiliates FECI LT1, LLC and LR13-18, LLC.

Please indicate on the attached maps your principal existing and proposed facilities and return a completed marked up set via email or by mail to the following address. Along with the plans, please present any general concerns and/or comments that would be useful in MDPROS' evaluation process.

**AECOM Technical Services, Inc.**  
**Attn: Ana Sandoval, PE**  
**7650 Corporate Center Drive, Suite 200**

**Miami, Florida 33126**  
**[ana.sandoval@aecom.com](mailto:ana.sandoval@aecom.com)**

If your facilities are located on compensable property interests within the limits of this project, you may be eligible to have your relocation costs reimbursed by MDPROS. If you have any of the above interests, please mark the approximate boundaries of them on the enclosed set of plans and return to the address above, together with documentation of your interests and a preliminary cost estimate.

Include in your transmittal, on utility agency/owner letterhead, a statement as to whether or not you will claim reimbursement and on what basis your claim is supported. Note that the information provided at this time will be used only for evaluation of design alternatives and does not constitute a claim.

Please note that failure to respond to this request will result in plans development without identification of your facilities. In order to maintain project schedules, please return the marked-up plans with your transmittal to the address above by November 30, 2018.

Should additional information be required, please contact me at 305-755-7952. Your cooperation in this matter is appreciated.

Sincerely,

**Alissa Turtletaub, M.S.**

**Senior Planner, Planning and Design Excellence**  
**Miami Dade County Parks, Recreation and Open Spaces**  
275 NW 2nd Street, 4th Floor, Miami, Florida 33128  
305-755-7952 Phone ~ 305-755-7864 Fax  
[alissa@miamidade.gov](mailto:alissa@miamidade.gov)

[www.miamidade.gov/parks](http://www.miamidade.gov/parks)  
**"Delivering Excellence Every Day"**

This email may contain confidential or privileged material. Use or disclosure of it by anyone other than the recipient is unauthorized. If you are not an intended recipient, please delete this email.



Appendix B – Correspondence with:

AT&T FL

AT&T Corp

Atlantic Broadband

CenturyLink Level 3 (Lumen)

Comcast

Crown Castle

Fiberlight (Atlantic Broadband)

Florida City Gas

Florida Gas Transmission

FPL Distribution

FPL Transmission

Hotwire

MCI/Verizon

Miami-Dade County Public Schools

Miami-Dade DTPW

Miami-Dade ITD

Miami-Dade Traffic Signals Dept

Miami-Dade WASD

## Sandoval, Ana

---

**From:** Kramer, Wayne J. <wkramer@atlanticbb.com>  
**Sent:** Monday, December 03, 2018 1:49 PM  
**To:** Sandoval, Ana; wayne.kramer@fiberlight.com  
**Cc:** Turtletaub, Alissa (MDPR) (Alissa.Turtletaub@miamidade.gov); Heinicke, Mark (MDPR) <Mark.Heinicke@miamidade.gov>; Kuhn, Nick; Boucle, Julio  
**Subject:** RE: Ludlam Corridor - Fiberlight LLC Facilities

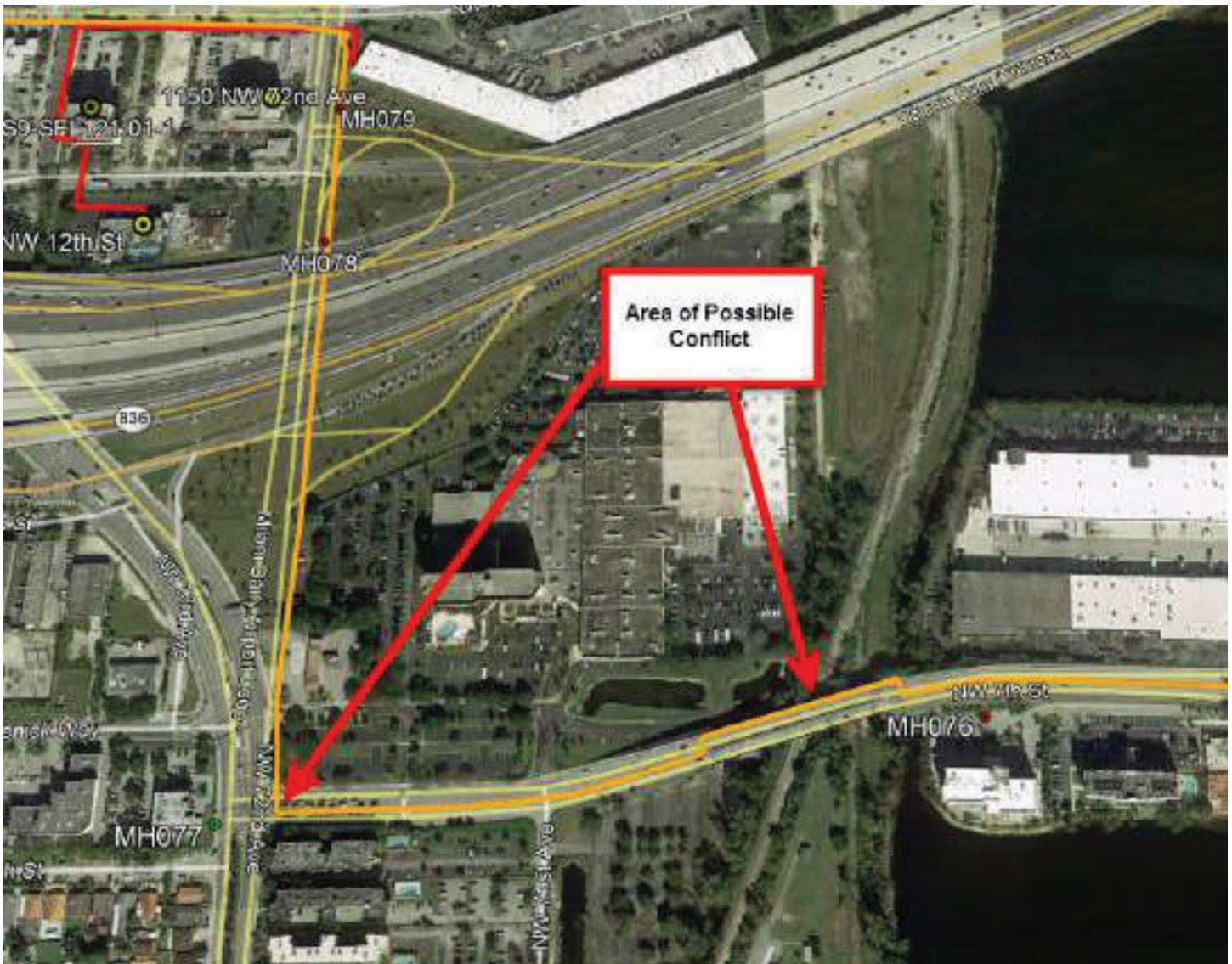
Ms. Sandoval,

Ms. Sandoval,

Please see below image. Our facilities are located on the East Side of NW 72<sup>nd</sup> Ave at NW 7<sup>th</sup> St. continuing West on 7<sup>th</sup> across RxR corridor.

We are located within a Legacy Level3/Centurylink duct bank in this location.

Please see below image depicting our FOC facilities in orange



Wayne Kramer  
 Project Manager  
 602 South Military Trail  
 Deerfield Beach, FL 33442  
 wkramer@atlanticbb.com  
 M: 786-535-0730



**From:** Sandoval, Ana <ana.sandoval@aecom.com>  
**Sent:** Friday, November 30, 2018 3:01 PM  
**To:** wayne.kramer@fiberlight.com  
**Cc:** Turtleaub, Alissa (MDPR) (Alissa.Turtleaub@miamidade.gov) <Alissa.Turtleaub@miamidade.gov>; Heinicke, Mark (MDPR) <Mark.Heinicke@miamidade.gov> <Mark.Heinicke@miamidade.gov>; Kuhn, Nick <Nick.Kuhn@aecom.com>; Boucle, Julio <julio.boucle@aecom.com>  
**Subject:** FW: Ludlam Corridor - Fiberlight LLC Facilities

Good afternoon,

This is just a reminder that your prompt attention is needed on the below request. Please let me know if you have any questions.

Thank you very much.

**Ana Sandoval, P.E.**  
Senior Project Manager  
D 1-305-514-2420  
[ana.sandoval@aecom.com](mailto:ana.sandoval@aecom.com)

**AECOM**  
7650 Corporate Center Drive, Suite 400, Miami, Florida 33126-1220  
T 1-305-262-7466 F 1-305-261-4017  
[www.aecom.com](http://www.aecom.com)

---

**From:** Turtletaub, Alissa (MDPR) [<mailto:Alissa.Turtletaub@miamidade.gov>]  
**Sent:** Monday, October 22, 2018 3:38 PM  
**To:** [wayne.kramer@fiberlight.com](mailto:wayne.kramer@fiberlight.com)  
**Cc:** Kuhn, Nick; Boucle, Julio; Sandoval, Ana; Heinicke, Mark (MDPR)  
**Subject:** Ludlam Corridor - Fiberlight LLC Facilities

Good afternoon,

The Miami-Dade County Parks, Recreation and Open Spaces (MDPROS) Department is in the development phase for evaluation of design alternatives and final location design approval relating to the Ludlam Trail.

To assist us in selection of the most feasible design alternative while minimizing conflicts with your facilities, your input is needed. This request is separate and distinct from the request for assignment of any existing license agreement or other agreements, forwarded recently by FECI affiliates FECI LT1, LLC and LR13-18, LLC.

Please indicate on the attached maps your principal existing and proposed facilities and return a completed marked up set via email or by mail to the following address. Along with the plans, please present any general concerns and/or comments that would be useful in MDPROS' evaluation process.

**AECOM Technical Services, Inc.**  
**Attn: Ana Sandoval, PE**  
**7650 Corporate Center Drive, Suite 200**  
**Miami, Florida 33126**  
[ana.sandoval@aecom.com](mailto:ana.sandoval@aecom.com)

If your facilities are located on compensable property interests within the limits of this project, you may be eligible to have your relocation costs reimbursed by MDPROS. If you have any of the above interests, please mark the approximate boundaries of them on the enclosed set of plans and return to the address above, together with documentation of your interests and a preliminary cost estimate.

Include in your transmittal, on utility agency/owner letterhead, a statement as to whether or not you will claim reimbursement and on what basis your claim is supported. Note that the information provided at this time will be used only for evaluation of design alternatives and does not constitute a claim.

Please note that failure to respond to this request will result in plans development without identification of your facilities. In order to maintain project schedules, please return the marked-up plans with your transmittal to the address above by November 30, 2018.

Should additional information be required, please contact me at 305-755-7952. Your cooperation in this matter is appreciated.

Sincerely,

**Alissa Turtletaub, M.S.**

**Senior Planner, Planning and Design Excellence**  
**Miami Dade County Parks, Recreation and Open Spaces**  
275 NW 2nd Street, 4th Floor, Miami, Florida 33128  
305-755-7952 Phone ~ 305-755-7864 Fax  
[alissa@miamidade.gov](mailto:alissa@miamidade.gov)

[www.miamidade.gov/parks](http://www.miamidade.gov/parks)  
**"Delivering Excellence Every Day"**

## **Disclaimer**

The information contained in this communication from the sender is confidential. It is intended solely for use by the recipient and others authorized to receive it. If you are not the recipient, you are hereby notified that any disclosure, copying, distribution or taking action in relation of the contents of this information is strictly prohibited and may be unlawful.

This email has been scanned for viruses and malware, and may have been automatically archived by **Mimecast Ltd**, an innovator in Software as a Service (SaaS) for business. Providing a **safer** and **more useful** place for your human generated data. Specializing in; Security, archiving and compliance. To find out more [Click Here](#).

Appendix B – Correspondence with:

AT&T FL

AT&T Corp

Atlantic Broadband

CenturyLink Level 3 (Lumen)

Comcast

Crown Castle

Fiberlight (Atlantic Broadband)

Florida City Gas

Florida Gas Transmission

FPL Distribution

FPL Transmission

Hotwire

MCI/Verizon

Miami-Dade County Public Schools

Miami-Dade DTPW

Miami-Dade ITD

Miami-Dade Traffic Signals Dept

Miami-Dade WASD

## Sandoval, Ana

---

**From:** Lopez, Maria <Maria.Lopez@nexteraenergy.com>  
**Sent:** Tuesday, October 23, 2018 3:22 PM  
**To:** Turtletaub, Alissa (MDPR)  
**Cc:** Kuhn, Nick; Boucle, Julio; Sandoval, Ana; Heinicke, Mark (MDPR)  
**Subject:** RE: Ludlam Corridor - Florida City Gas Facilities  
**Attachments:** MDC Ludlam Trail Env. Study - FCG Records.pdf

Good afternoon,

Attached please find FCG's records/as-builts for the subject project. Unfortunately our facilities map is down and I won't be able to provide you with it until the system is back up.

Below please find a summary of the utilities we have present to assist you in place of the overall maps.

- Crossing at SW 80<sup>th</sup> Street → 2" STL 60 psig MAOP Gas Main
- On Ludlam Trail/ SW 69<sup>th</sup> Ave from SW 80<sup>th</sup> St to SW 78<sup>th</sup> Ter → 2" PE 60 psig MAOP Gas Main
  - No records available for this segment
- Crossing at SW 64<sup>th</sup> Street → 2" STL 60 psig MAOP Gas Main
- Crossing at Bird Road → 4" STL 60 psig MAOP Gas Main
- Crossing at Coral Way → 6" STL 60 psig MAOP Gas Main
- On Ludlam Trail/SW 69<sup>th</sup> Ave from SW 8<sup>th</sup> St to NW 7<sup>th</sup> St → 6" STL 450 psig MAOP Gas Main
  - No records available for this segment

Should you need anything else, do not hesitate to contact me.

Regards,

**Maria Paula Lopez**  
Engineering Design  
Gas Operations

**Florida City Gas**  
786-332-8913 (mobile)  
[Maria.Lopez@NextEraEnergy.com](mailto:Maria.Lopez@NextEraEnergy.com)



---

**From:** Turtletaub, Alissa (MDPR) <[Alissa.Turtletaub@miamidade.gov](mailto:Alissa.Turtletaub@miamidade.gov)>  
**Sent:** Monday, October 22, 2018 3:28 PM  
**To:** Lopez, Maria <[Maria.Lopez@nexteraenergy.com](mailto:Maria.Lopez@nexteraenergy.com)>  
**Cc:** Kuhn, Nick <[Nick.Kuhn@aecom.com](mailto:Nick.Kuhn@aecom.com)>; Boucle, Julio <[julio.boucle@aecom.com](mailto:julio.boucle@aecom.com)>; Sandoval, Ana <[ana.sandoval@aecom.com](mailto:ana.sandoval@aecom.com)>; Heinicke, Mark (MDPR) <[Mark.Heinicke@miamidade.gov](mailto:Mark.Heinicke@miamidade.gov)>  
**Subject:** Ludlam Corridor - Florida City Gas Facilities

CAUTION - EXTERNAL EMAIL

Good afternoon,



The Miami-Dade County Parks, Recreation and Open Spaces (MDPROS) Department is in the development phase for evaluation of design alternatives and final location design approval relating to the Ludlam Trail.

To assist us in selection of the most feasible design alternative while minimizing conflicts with your facilities, your input is needed. This request is separate and distinct from the request for assignment of any existing license agreement or other agreements, forwarded recently by FECI affiliates FECI LT1, LLC and LR13-18, LLC.

Please indicate on the attached maps your principal existing and proposed facilities and return a completed marked up set via email or by mail to the following address. Along with the plans, please present any general concerns and/or comments that would be useful in MDPROS' evaluation process.

**AECOM Technical Services, Inc.**  
**Attn: Ana Sandoval, PE**  
**7650 Corporate Center Drive, Suite 200**  
**Miami, Florida 33126**  
[ana.sandoval@aecom.com](mailto:ana.sandoval@aecom.com)

If your facilities are located on compensable property interests within the limits of this project, you may be eligible to have your relocation costs reimbursed by MDPROS. If you have any of the above interests, please mark the approximate boundaries of them on the enclosed set of plans and return to the address above, together with documentation of your interests and a preliminary cost estimate.

Include in your transmittal, on utility agency/owner letterhead, a statement as to whether or not you will claim reimbursement and on what basis your claim is supported. Note that the information provided at this time will be used only for evaluation of design alternatives and does not constitute a claim.

Please note that failure to respond to this request will result in plans development without identification of your facilities. In order to maintain project schedules, please return the marked-up plans with your transmittal to the address above by November 30, 2018.

Should additional information be required, please contact me at 305-755-7952. Your cooperation in this matter is appreciated.

Sincerely,

**Alissa Turtletaub, M.S.**

**Senior Planner, Planning and Design Excellence**  
**Miami Dade County Parks, Recreation and Open Spaces**  
275 NW 2nd Street, 4th Floor, Miami, Florida 33128  
305-755-7952 Phone ~ 305-755-7864 Fax  
[alissa@miamidade.gov](mailto:alissa@miamidade.gov)

[www.miamidade.gov/parks](http://www.miamidade.gov/parks)  
**"Delivering Excellence Every Day"**



Appendix B – Correspondence with:

AT&T FL

AT&T Corp

Atlantic Broadband

CenturyLink Level 3 (Lumen)

Comcast

Crown Castle

Fiberlight (Atlantic Broadband)

Florida City Gas

Florida Gas Transmission

FPL Distribution

FPL Transmission

Hotwire

MCI/Verizon

Miami-Dade County Public Schools

Miami-Dade DTPW

Miami-Dade ITD

Miami-Dade Traffic Signals Dept

Miami-Dade WASD

## Sandoval, Ana

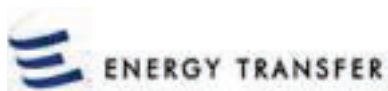
---

**From:** Sanchez, Joseph <Joseph.E.Sanchez@energytransfer.com>  
**Sent:** Friday, November 30, 2018 3:59 PM  
**To:** Sandoval, Ana  
**Subject:** RE: Ludlam Corridor - Florida Gas Transmission Facilities  
**Attachments:** Scanned from a Xerox multifunction device.pdf

Ana,

As requested, please see the attached Florida Gas Transmission Company natural gas transmission pipeline facilities located within the project limits described in your location map.

Thank you,



---

**Joseph E. Sanchez**

Florida Gas Transmission Company, LLC  
Southeast Division – Sr. Technical Specialist  
Energy Transfer Partners  
2405 Lucien Way | Suite 200 | Maitland, FL. 32751  
**O:** 407.838.7171  
**C:** 407-808-4607

---

**From:** Sandoval, Ana <ana.sandoval@aecom.com>  
**Sent:** Friday, November 30, 2018 3:03 PM  
**To:** Sanchez, Joseph <Joseph.E.Sanchez@energytransfer.com>  
**Cc:** Turtletaub, Alissa (MDPR) (Alissa.Turtletaub@miamidade.gov) <Alissa.Turtletaub@miamidade.gov>; Heinicke, Mark (MDPR) <Mark.Heinicke@miamidade.gov> <Mark.Heinicke@miamidade.gov>; Kuhn, Nick <Nick.Kuhn@aecom.com>; Boucle, Julio <julio.boucle@aecom.com>  
**Subject:** FW: Ludlam Corridor - Florida Gas Transmission Facilities

Good afternoon,

This is just a reminder that your prompt attention is needed on the below request. Please let me know if you have any questions.

Thank you very much.

**Ana Sandoval, P.E.**  
Senior Project Manager  
D 1-305-514-2420  
[ana.sandoval@aecom.com](mailto:ana.sandoval@aecom.com)

**AECOM**

**From:** Turtletaub, Alissa (MDPR) [<mailto:Alissa.Turtletaub@miamidade.gov>]  
**Sent:** Monday, October 22, 2018 3:39 PM  
**To:** [joseph.e.sanchez@energytransfer.com](mailto:joseph.e.sanchez@energytransfer.com)  
**Cc:** Kuhn, Nick; Boucle, Julio; Sandoval, Ana; Heinicke, Mark (MDPR)  
**Subject:** Ludlam Corridor - Florida Gas Transmission Facilities

Good afternoon,

The Miami-Dade County Parks, Recreation and Open Spaces (MDPROS) Department is in the development phase for evaluation of design alternatives and final location design approval relating to the Ludlam Trail.

To assist us in selection of the most feasible design alternative while minimizing conflicts with your facilities, your input is needed. This request is separate and distinct from the request for assignment of any existing license agreement or other agreements, forwarded recently by FECI affiliates FECI LT1, LLC and LR13-18, LLC.

Please indicate on the attached maps your principal existing and proposed facilities and return a completed marked up set via email or by mail to the following address. Along with the plans, please present any general concerns and/or comments that would be useful in MDPROS' evaluation process.

**AECOM Technical Services, Inc.**  
**Attn: Ana Sandoval, PE**  
**7650 Corporate Center Drive, Suite 200**  
**Miami, Florida 33126**  
[ana.sandoval@aecom.com](mailto:ana.sandoval@aecom.com)

If your facilities are located on compensable property interests within the limits of this project, you may be eligible to have your relocation costs reimbursed by MDPROS. If you have any of the above interests, please mark the approximate boundaries of them on the enclosed set of plans and return to the address above, together with documentation of your interests and a preliminary cost estimate.

Include in your transmittal, on utility agency/owner letterhead, a statement as to whether or not you will claim reimbursement and on what basis your claim is supported. Note that the information provided at this time will be used only for evaluation of design alternatives and does not constitute a claim.

Please note that failure to respond to this request will result in plans development without identification of your facilities. In order to maintain project schedules, please return the marked-up plans with your transmittal to the address above by November 30, 2018.

Should additional information be required, please contact me at 305-755-7952. Your cooperation in this matter is appreciated.

Sincerely,

**Alissa Turtletaub, M.S.**

**Senior Planner, Planning and Design Excellence**  
**Miami Dade County Parks, Recreation and Open Spaces**

275 NW 2nd Street, 4th Floor, Miami, Florida 33128

305-755-7952 Phone ~ 305-755-7864 Fax

[alissa@miamidade.gov](mailto:alissa@miamidade.gov)

[http://secure-web.cisco.com/17-rLUrXj5haig787AD-L2IX3SY3SyfxSqY7j9DuvN7OLw4eG7p94D-eIOHhyHrMrEmBDV6cT2CEEenleBYOeZ-5qwWaqx9dit8BNNrfjCMWhVu2GsuTN7J0q5yuLm01Q\\_UAPpeTIfy465Ile-fzb9C9s4-XreHs1bCWE2vMRG-GWEpKYM0YpnID-IS6VOci4MHC5-XAmY\\_Mz9p5j5wj48Zh9M7qrlDSCNT8reWxwx5CWNOF1IBzG4LJZsMTNGSDvU8Q\\_Wlk3DFP8CTxhGZLpiCw/htp%3A%2F%2Fwww.miamidade.gov%2Fparks](http://secure-web.cisco.com/17-rLUrXj5haig787AD-L2IX3SY3SyfxSqY7j9DuvN7OLw4eG7p94D-eIOHhyHrMrEmBDV6cT2CEEenleBYOeZ-5qwWaqx9dit8BNNrfjCMWhVu2GsuTN7J0q5yuLm01Q_UAPpeTIfy465Ile-fzb9C9s4-XreHs1bCWE2vMRG-GWEpKYM0YpnID-IS6VOci4MHC5-XAmY_Mz9p5j5wj48Zh9M7qrlDSCNT8reWxwx5CWNOF1IBzG4LJZsMTNGSDvU8Q_Wlk3DFP8CTxhGZLpiCw/htp%3A%2F%2Fwww.miamidade.gov%2Fparks)

**"Delivering Excellence Every Day"**

Private and confidential as detailed [here](#). If you cannot access hyperlink, please e-mail sender.

Appendix B – Correspondence with:

AT&T FL

AT&T Corp

Atlantic Broadband

CenturyLink Level 3 (Lumen)

Comcast

Crown Castle

Fiberlight (Atlantic Broadband)

Florida City Gas

Florida Gas Transmission

FPL Distribution

FPL Transmission

Hotwire

MCI/Verizon

Miami-Dade County Public Schools

Miami-Dade DTPW

Miami-Dade ITD

Miami-Dade Traffic Signals Dept

Miami-Dade WASD

**Sandoval, Ana**

---

**Subject:** FW: FPL Documentation - Ludlam Trail Project from SW 80 St to NW 7 St

---

**From:** Turtletaub, Alissa (MDPR) [<mailto:Alissa.Turtletaub@miamidade.gov>]  
**Sent:** Wednesday, January 23, 2019 8:40 AM  
**To:** Boucle, Julio  
**Cc:** Kuhn, Nick; Webb, Joseph; Sandoval, Ana; Cherney, Laura; Mairena, David; Heinicke, Mark (MDPR); Henderson, Colin (MDPR)  
**Subject:** FPL Documentation - Ludlam Trail Project from SW 80 St to NW 7 St

Good morning Julio,

Please see attached documents and email below submitted by FPL in reference to their utility installations within the Ludlam Trail corridor. Please review and advise if there are any issues, concerns, questions, etc. Thx

Sincerely,

**Alissa Turtletaub, M.S.**

**Senior Planner, Planning and Design Excellence**  
**Miami Dade County Parks, Recreation and Open Spaces**  
275 NW 2nd Street, 4th Floor, Miami, Florida 33128  
305-755-7952 Phone ~ 305-755-7864 Fax  
[alissa@miamidade.gov](mailto:alissa@miamidade.gov)

[www.miamidade.gov/parks](http://www.miamidade.gov/parks)  
**"Delivering Excellence Every Day"**

---

**From:** Giraldo, John [<mailto:John.Giraldo@fpl.com>]  
**Sent:** Tuesday, January 22, 2019 3:17 PM  
**To:** Turtletaub, Alissa (MDPR) <[Alissa.Turtletaub@miamidade.gov](mailto:Alissa.Turtletaub@miamidade.gov)>  
**Subject:** Ludlam Trail Project from SW 80 St to NW 7 St

This is an EXTERNAL email. Exercise caution. DO NOT open attachments or click links from unknown senders or unexpected emails. Please click here if this is a suspicious message  
[reportspam@miamidade.gov](mailto:reportspam@miamidade.gov) **Enterprise Security Office**

---

Good afternoon Alissa,

Hoping that this New Year found you and your family in good health!!

See attached files for FPL Distribution markup.

We did not identify conflicts with distribution facilities OH or UG within the project boundaries at this time.  
In addition, attached you will find:

- 360 Form
- Preliminary Review letter
- Letter of transmittal
- Record Drawings.

Please do not hesitate to ask if you have any questions.

Thanks,

John Giraldo  
Relocation Coordinator  
Distribution Engineering  
Office: 305-442-5172  
Cell: 305-798-8914

*Enjoy the little things, for one day you may look back and realize they were the big things.*  
By Robert Brault



Appendix B – Correspondence with:

AT&T FL

AT&T Corp

Atlantic Broadband

CenturyLink Level 3 (Lumen)

Comcast

Crown Castle

Fiberlight (Atlantic Broadband)

Florida City Gas

Florida Gas Transmission

FPL Distribution

FPL Transmission

Hotwire

MCI/Verizon

Miami-Dade County Public Schools

Miami-Dade DTPW

Miami-Dade ITD

Miami-Dade Traffic Signals Dept

Miami-Dade WASD



**From:** [Foley, Michael](#)  
**To:** [Mairena, David](#)  
**Cc:** [Boucle, Julio](#); [Sandoval, Ana](#); [Ortiz, Bayoan R.](#)  
**Subject:** RE: [Follow Up] Preliminary Plans Review - Transmission Facilities Mark Up Request - Ludlam Trail Project Development & Environment (PD&E) Study  
**Date:** Tuesday, June 11, 2019 8:28:52 AM  
**Attachments:** [Basemap Ludlam Utilities.pdf](#)

---

Good morning David,

As I was logging these plans I noticed that we already had mark-ups saved for this project. Please see the attached mark-ups.

Please feel free to reach out with any questions or concerns.

Thank you,  
Mike Foley  
FPL Transmission  
561-523-9896

---

**From:** Foley, Michael  
**Sent:** Tuesday, June 11, 2019 8:02 AM  
**To:** 'Mairena, David'  
**Cc:** Boucle, Julio; Sandoval, Ana; Ortiz, Bayoan R.  
**Subject:** RE: [Follow Up] Preliminary Plans Review - Transmission Facilities Mark Up Request - Ludlam Trail Project Development & Environment (PD&E) Study

Thank you David. I will log the plans for review and return the mark-ups once they are ready.

Thank you,  
Michael Foley  
FPL Transmission  
561-523-9896

---

**From:** Mairena, David [<mailto:david.mairena@aecom.com>]  
**Sent:** Monday, June 10, 2019 3:31 PM  
**To:** Foley, Michael  
**Cc:** Boucle, Julio; Sandoval, Ana; Ortiz, Bayoan R.  
**Subject:** [Follow Up] Preliminary Plans Review - Transmission Facilities Mark Up Request - Ludlam Trail Project Development & Environment (PD&E) Study  
**Importance:** High

**CAUTION - EXTERNAL EMAIL**

Good Afternoon Mr. Foley,

As discussed via phone call, attached is a location map of the project, basemap sheets covering the project limits, and the initial letter for this request. I will follow up with a phone call next week 6/17 to verify if there are any potential transmission facilities located within the extents of the basemap.

I appreciate your time regarding this request.

Thanks.

**David Mairena, P.E.**

Project Engineer, Transportation, Southeast Region - Florida

D +1-305-514-2433

M +1-561-352-9158

[david.mairena@aecom.com](mailto:david.mairena@aecom.com)

**AECOM**

7650 Corporate Center Drive

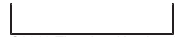
Miami, Florida 33126-1220, United States

T +1-305-262-7466

[aecom.com](http://aecom.com)

**Imagine it. Delivered.**

[LinkedIn](#) [Twitter](#) [Facebook](#) [Instagram](#)



©2018 Time Inc. Used under license.

Appendix B – Correspondence with:

AT&T FL

AT&T Corp

Atlantic Broadband

CenturyLink Level 3 (Lumen)

Comcast

Crown Castle

Fiberlight (Atlantic Broadband)

Florida City Gas

Florida Gas Transmission

FPL Distribution

FPL Transmission

Hotwire

MCI/Verizon

Miami-Dade County Public Schools

Miami-Dade DTPW

Miami-Dade ITD

Miami-Dade Traffic Signals Dept

Miami-Dade WASD

## Sandoval, Ana

---

**From:** Walter Sancho-Davila <walter.sancho-davila@hotwirecommunication.com>  
**Sent:** Wednesday, October 31, 2018 9:46 AM  
**To:** Turtletaub, Alissa (MDPR); Phil Gallub  
**Cc:** Kuhn, Nick; Boucle, Julio; Sandoval, Ana; Cherney, Laura; Heinicke, Mark (MDPR)  
**Subject:** RE: Ludlam Corridor - Hotwire Communications Facilities

Good morning Alissa,

We have no facilities in this area, therefore, there are no conflicts with your project. Please, accept this email as our official response to your request.

Please, keep us informed for future updates of this project.

Thank you

**Walter Sancho-Davila** | Project Manager | OSP Engineering

Office: 954.699.0900

Cell: 954.248.7396

[walter.sancho-davila@hotwirecommunication.com](mailto:walter.sancho-davila@hotwirecommunication.com)



2100 W Cypress Creek Rd  
Fort Lauderdale, FL 33309

**CORPORATE SITE:** [www.hotwirecommunications.com](http://www.hotwirecommunications.com)

**CUSTOMER SITE:** [www.gethotwired.com](http://www.gethotwired.com)

[Hotwire's BBB Rating](#)

*The information contained in this message, including all attachments (if any), may be privileged and confidential and protected from disclosure, and is intended only for the recipient(s) listed above. If you are not the intended recipient(s), or an employee, or agent responsible for delivering this message to the intended recipient(s), you are hereby notified that any dissemination, distribution, or copying of this communication is strictly prohibited. If you have received this communication in error, please notify us immediately by replying to the message and deleting it from your computer. Opinions, conclusions, and other information in this message that do not relate to the official business of Hotwire Communications, Ltd., or their parents or affiliates, are those of the sender and are neither given nor endorsed by Hotwire Communications, Ltd., their parents or affiliates.*

---

**From:** Turtletaub, Alissa (MDPR) [mailto:Alissa.Turtletaub@miamidade.gov]  
**Sent:** Tuesday, October 30, 2018 4:13 PM  
**To:** Phil Gallub; Walter Sancho-Davila  
**Cc:** Kuhn, Nick; Boucle, Julio; Sandoval, Ana; Cherney, Laura; Heinicke, Mark (MDPR)  
**Subject:** Ludlam Corridor - Hotwire Communications Facilities

Good afternoon,

The Miami-Dade County Parks, Recreation and Open Spaces (MDPROS) Department is in the development phase for evaluation of design alternatives and final location design approval relating to the Ludlam Trail.

To assist us in selection of the most feasible design alternative while minimizing conflicts with your facilities, your input is needed. This request is separate and distinct from the request for assignment of any existing

license agreement or other agreements, forwarded recently by FECI affiliates FECI LT1, LLC and LR13-18, LLC.

Please indicate on the attached maps your principal existing and proposed facilities and return a completed marked up set via email or by mail to the following address. Along with the plans, please present any general concerns and/or comments that would be useful in MDPROS' evaluation process.

**AECOM Technical Services, Inc.**  
**Attn: Ana Sandoval, PE**  
**7650 Corporate Center Drive, Suite 200**  
**Miami, Florida 33126**  
[ana.sandoval@aecom.com](mailto:ana.sandoval@aecom.com)

If your facilities are located on compensable property interests within the limits of this project, you may be eligible to have your relocation costs reimbursed by MDPROS. If you have any of the above interests, please mark the approximate boundaries of them on the enclosed set of plans and return to the address above, together with documentation of your interests and a preliminary cost estimate.

Include in your transmittal, on utility agency/owner letterhead, a statement as to whether or not you will claim reimbursement and on what basis your claim is supported. Note that the information provided at this time will be used only for evaluation of design alternatives and does not constitute a claim.

Please note that failure to respond to this request will result in plans development without identification of your facilities. In order to maintain project schedules, please return the marked-up plans with your transmittal to the address above by November 30, 2018.

Should additional information be required, please contact me at 305-755-7952. Your cooperation in this matter is appreciated.

Sincerely,

**Alissa Turtletaub, M.S.**

**Senior Planner, Planning and Design Excellence**  
**Miami Dade County Parks, Recreation and Open Spaces**  
275 NW 2nd Street, 4th Floor, Miami, Florida 33128  
305-755-7952 Phone ~ 305-755-7864 Fax  
[alissa@miamidade.gov](mailto:alissa@miamidade.gov)

[www.miamidade.gov/parks](http://www.miamidade.gov/parks)  
**"Delivering Excellence Every Day"**

Appendix B – Correspondence with:

AT&T FL

AT&T Corp

Atlantic Broadband

CenturyLink Level 3 (Lumen)

Comcast

Crown Castle

Fiberlight (Atlantic Broadband)

Florida City Gas

Florida Gas Transmission

FPL Distribution

FPL Transmission

Hotwire

MCI/Verizon

Miami-Dade County Public Schools

Miami-Dade DTPW

Miami-Dade ITD

Miami-Dade Traffic Signals Dept

Miami-Dade WASD

## Sandoval, Ana

---

**From:** john.bachelder@verizon.com  
**Sent:** Friday, November 30, 2018 4:08 PM  
**To:** Sandoval, Ana  
**Subject:** RE: Ludlam Corridor - MCI - Verizon Business Facilities  
**Attachments:** Capture.PNG; FIM 09-12-2018 Legend.docx

Ana,  
Verizonbusiness (MCI) DOES Have Aerial Facilities in the area.  
Please see attached.

PLEASE DO NOT REPLY TO THIS MESSAGE. THIS E-MAIL DOES NOT ACCEPT MESSAGES.  
PLEASE SEND INQUIRIES TO [Investigations@verizon.com](mailto:Investigations@verizon.com)

Thanks,  
John Bachelder

---

**From:** Sandoval, Ana [<mailto:ana.sandoval@aecom.com>]  
**Sent:** Friday, November 30, 2018 2:10 PM  
**To:** Investigations  
**Cc:** Turtletaub, Alissa (MDPR) ([Alissa.Turtletaub@miamidade.gov](mailto:Alissa.Turtletaub@miamidade.gov)); Heinicke, Mark (MDPR) <[Mark.Heinicke@miamidade.gov](mailto:Mark.Heinicke@miamidade.gov)>; Kuhn, Nick; Boucle, Julio  
**Subject:** FW: Ludlam Corridor - MCI - Verizon Business Facilities

Good afternoon,

This is just a reminder that your prompt attention is needed on the below request. Please let me know if you have any questions.

Thank you very much.

**Ana Sandoval, P.E.**  
Senior Project Manager  
D 1-305-514-2420  
[ana.sandoval@aecom.com](mailto:ana.sandoval@aecom.com)

**AECOM**  
7650 Corporate Center Drive, Suite 400, Miami, Florida 33126-1220  
T 1-305-262-7466 F 1-305-261-4017  
[www.aecom.com](http://www.aecom.com)

---

**From:** Turtletaub, Alissa (MDPR) [<mailto:Alissa.Turtletaub@miamidade.gov>]  
**Sent:** Monday, October 22, 2018 3:48 PM  
**To:** [Investigations@Verizon.com](mailto:Investigations@Verizon.com)  
**Cc:** Kuhn, Nick; Boucle, Julio; Sandoval, Ana; Heinicke, Mark (MDPR)  
**Subject:** Ludlam Corridor - MCI - Verizon Business Facilities

Good afternoon,

The Miami-Dade County Parks, Recreation and Open Spaces (MDPROS) Department is in the development phase for evaluation of design alternatives and final location design approval relating to the Ludlam Trail.

To assist us in selection of the most feasible design alternative while minimizing conflicts with your facilities, your input is needed. This request is separate and distinct from the request for assignment of any existing license agreement or other agreements, forwarded recently by FECI affiliates FECI LT1, LLC and LR13-18, LLC.

Please indicate on the attached maps your principal existing and proposed facilities and return a completed marked up set via email or by mail to the following address. Along with the plans, please present any general concerns and/or comments that would be useful in MDPROS' evaluation process.

**AECOM Technical Services, Inc.**  
**Attn: Ana Sandoval, PE**  
**7650 Corporate Center Drive, Suite 200**  
**Miami, Florida 33126**  
[ana.sandoval@aecom.com](mailto:ana.sandoval@aecom.com)

If your facilities are located on compensable property interests within the limits of this project, you may be eligible to have your relocation costs reimbursed by MDPROS. If you have any of the above interests, please mark the approximate boundaries of them on the enclosed set of plans and return to the address above, together with documentation of your interests and a preliminary cost estimate.

Include in your transmittal, on utility agency/owner letterhead, a statement as to whether or not you will claim reimbursement and on what basis your claim is supported. Note that the information provided at this time will be used only for evaluation of design alternatives and does not constitute a claim.

Please note that failure to respond to this request will result in plans development without identification of your facilities. In order to maintain project schedules, please return the marked-up plans with your transmittal to the address above by November 30, 2018.

Should additional information be required, please contact me at 305-755-7952. Your cooperation in this matter is appreciated.

Sincerely,

**Alissa Turtletaub, M.S.**

**Senior Planner, Planning and Design Excellence**  
**Miami Dade County Parks, Recreation and Open Spaces**  
275 NW 2nd Street, 4th Floor, Miami, Florida 33128  
305-755-7952 Phone ~ 305-755-7864 Fax  
[alissa@miamidade.gov](mailto:alissa@miamidade.gov)

[www.miamidade.gov/parks](http://www.miamidade.gov/parks)  
**"Delivering Excellence Every Day"**



Appendix B – Correspondence with:

AT&T FL

AT&T Corp

Atlantic Broadband

CenturyLink Level 3 (Lumen)

Comcast

Crown Castle

Fiberlight (Atlantic Broadband)

Florida City Gas

Florida Gas Transmission

FPL Distribution

FPL Transmission

Hotwire

MCI/Verizon

Miami-Dade County Public Schools

Miami-Dade DTPW

Miami-Dade ITD

Miami-Dade Traffic Signals Dept

Miami-Dade WASD

## Sandoval, Ana

---

**From:** ALBUERNE, FERNANDO <falbuerne@dadeschools.net>  
**Sent:** Wednesday, October 31, 2018 10:59 AM  
**To:** Boucle, Julio; Sandoval, Ana  
**Cc:** Levine, Michael  
**Subject:** FW: Message from "9217-GALU-Rm523"  
**Attachments:** 20181031095710856.pdf

Julio/Ana, attached is a map that shows MDCPS properties adjacent the Ludlam Trail Project.

South Miami K-8 ---6800 SW 60 Street Folio # 09-4026-000-0320 and 09-4026-000-0050  
South Miami Sr. ---6856 SW 53 Street Folio # 30-4023-022-0010  
Food 7 Nutrition Center et al. ---7001 SW 4 Street Folio # 01-4002-012-0010

I spoke to Lourdes C. Mendez-Lopez from the District this morning and told me she had already discussed the project with Julio. Please let me know if we can be of additional help on this project.

Thanks and Regards

Fernando Albuerne  
Miami Dade County Public Schools  
Department of Planning, Design and Sustainability  
1450 NE 2 Avenue, Room 525  
Miami, FL. 33132

[falbuerne@dadeschools.net](mailto:falbuerne@dadeschools.net)  
(305) 995-7286

Appendix B – Correspondence with:

AT&T FL

AT&T Corp

Atlantic Broadband

CenturyLink Level 3 (Lumen)

Comcast

Crown Castle

Fiberlight (Atlantic Broadband)

Florida City Gas

Florida Gas Transmission

FPL Distribution

FPL Transmission

Hotwire

MCI/Verizon

Miami-Dade County Public Schools

Miami-Dade DTPW

Miami-Dade ITD

Miami-Dade Traffic Signals Dept

Miami-Dade WASD

## Sandoval, Ana

---

**From:** Marin, Octavio (DTPW) <Octavio.Marin@miamidade.gov>  
**Sent:** Monday, November 05, 2018 8:50 AM  
**To:** Turtletaub, Alissa (MDPR)  
**Cc:** Soper, Dawn (ISD); Kuhn, Nick; Boucle, Julio; Sandoval, Ana; Heinicke, Mark (MDPR); Fernandez, Dennis (DTPW); Navarro, Julio (DTPW); Legcevic, Evelin (DTPW); Ruiz, Daniel D. (DTPW)  
**Subject:** RE: Ludlam Corridor - Miami Dade Public Works Facilities  
**Attachments:** Location Map.pdf; 2018-10-17\_Basemap\_Ludlam\_Uilities.pdf; Miami-Dade County Public Works Department-Initial Utility Contact.pdf; Interconnect conduit SW 56 St.pdf; Interconnect conduit SW 80 St.pdf; SW 56 St Plans.pdf; West Flagler Plans.pdf

Alissa Turtletaub, M.S.  
Senior Planner,  
Miami Dade County Parks, Recreation and Open Spaces  
275 NW 2nd Street, 4th Floor, Miami, Florida 33128

AECOM Technical Services, Inc.  
Attn: Ana Sandoval, PE  
7650 Corporate Center Drive, Suite 200  
Miami, Florida 33126

Subject:  
ADJUSTMENT OF UTILITIES – FLORIDA STATUTES CHAPTER 337.403  
Project Description: Project Development and Environment Study for Ludlam Trail  
Project Location: Former railroad corridor from SW 80th Street to NW 7th Street at approximately NW/SW 69th Avenue  
Project Number: 403502-15-001-14470619  
ETDM Number: 14369  
County: Miami-Dade

Dear Ms. Turtletaub,

This e-mail is in response to your e-mail below and your letter dated October 22, 2018 (Attached).

A cursory review of the information you provided shows the proposed project limits are along the FEC railroad property with several roadway across. A list of this roadways with corresponding agency maintenance responsibility is provided below as well as information on Miami-Dade County Department of Transportation and Public Works (DTPW) facilities.

Streets across Ludlam Trail corridor			
Track crosses at	Crossing No.	Street maintenance by	Comment
NW 7 St	273040B	County	DTPW bridge overpass to be avoided. For additional information on the bridge structure, please contact Mr. Dennis Fernandez copied in this email.
W Flager St	272791P	FDOT	Information on file is attached. Contact FDOT for additional information.
SW 4 St	272792W	City	No plans on file. Contact City of Miami for additional information.
SW 8 St	272793D	FDOT	No plans on file. Contact FDOT for additional

			information.
SW 12 St	272794K	County	No plans on file. No DTPW facilities are expected to be found across the former railroad corridor.
SW 16 St	272795S	County	No plans on file. No DTPW facilities are expected to be found across the former railroad corridor.
SW 21 St	272796Y	County	No plans on file. No DTPW facilities are expected to be found across the former railroad corridor.
SW 22 St	272797F	County	No plans on file. No DTPW facilities are expected to be found across the former railroad corridor.
SW 24 St (Coral Way)	272798M	County	DTPW facilities are expected to be found within this road and the former railroad corridor. No plans on file.
N Waterway Dr	272799U	County	No plans on file. No DTPW facilities are expected to be found across the former railroad corridor.
SW 40 St (Bird Rd)	272800L	FDOT	No plans on file. Contact FDOT for additional information.
SW 56 St (Miller Dr)	272801T	County	DTPW facilities are expected to be found within this road and the former railroad corridor. Information on file is attached
SW 60 St	272802A	County	No plans on file. No DTPW facilities are expected to be found
SW 64 St (Hardee Rd)	272803G	County	No plans on file. No DTPW facilities are expected to be found
SW 72 St (Sunset Dr)	272805V	FDOT	No plans on file. Contact FDOT for additional information.
SW 80 St (Davis Dr)	272807J	County	DTPW facilities are expected to be found within this road and the former railroad corridor. Information on file is attached.

Any proposed construction near a traffic signal and street lighting should be coordinated with our Traffic Signals and Signs Division (TSS) staff Ms. Evelin Legcevic for Traffic Signals and Mr. Julio Navarro for Street Lighting. They are copied in this e-mail. Please provide plans when the subject project are further developed so that the proposed improvements within the roadway area can be reviewed by the DTPW.

In the absence of as-build drawings for the DTPW roadways, the design consultant will be responsible for the review of the existing traffic signal elements, street lighting and drainage facilities and determine possible conflicts with its design thru topographic survey and filed reviews.

Additionally, permits from DTPW will be required for work associated with the referenced project along the county roads. When plans are ready for review please submit them to our permit section by contacting Mr. Daniel Ruiz copied in this e-mail.

Please contact Miami Dade Water and Sewer Department if you have not done so for additional requirements or comments.

Thanks

Octavio Marin, M.S., P.E.,  
Senior Professional Engineer, Roadway Engineering and Right of Way Division

Department of Transportation and Public Works (DTPW)

(305) 375-4664

[www.miamidade.gov](http://www.miamidade.gov)

**"Delivering Excellence Every Day"**

---

**From:** Turtletaub, Alissa (MDPR)

**Sent:** Monday, October 22, 2018 3:31 PM

**To:** Marin, Octavio (DTPW) <Octavio.Marin@miamidade.gov>

**Cc:** Soper, Dawn (ISD) <Dawn.Soper@miamidade.gov>; Kuhn, Nick <Nick.Kuhn@aecom.com>; Boucle, Julio <julio.boucle@aecom.com>; Sandoval, Ana <ana.sandoval@aecom.com>; Heinicke, Mark (MDPR) <Mark.Heinicke@miamidade.gov>

**Subject:** Ludlam Corridor - Miami Dade Public Works Facilities

Good afternoon,

The Miami-Dade County Parks, Recreation and Open Spaces (MDPROS) Department is in the development phase for evaluation of design alternatives and final location design approval relating to the Ludlam Trail.

To assist us in selection of the most feasible design alternative while minimizing conflicts with your facilities, your input is needed. This request is separate and distinct from the request for assignment of any existing license agreement or other agreements, forwarded recently by FECI affiliates FECI LT1, LLC and LR13-18, LLC.

Please indicate on the attached maps your principal existing and proposed facilities and return a completed marked up set via email or by mail to the following address. Along with the plans, please present any general concerns and/or comments that would be useful in MDPROS' evaluation process.

**AECOM Technical Services, Inc.**

**Attn: Ana Sandoval, PE**

**7650 Corporate Center Drive, Suite 200**

**Miami, Florida 33126**

**[ana.sandoval@aecom.com](mailto:ana.sandoval@aecom.com)**

If your facilities are located on compensable property interests within the limits of this project, you may be eligible to have your relocation costs reimbursed by MDPROS. If you have any of the above interests, please mark the approximate boundaries of them on the enclosed set of plans and return to the address above, together with documentation of your interests and a preliminary cost estimate.

Include in your transmittal, on utility agency/owner letterhead, a statement as to whether or not you will claim reimbursement and on what basis your claim is supported. Note that the information provided at this time will be used only for evaluation of design alternatives and does not constitute a claim.

Please note that failure to respond to this request will result in plans development without identification of your facilities. In order to maintain project schedules, please return the marked-up plans with your transmittal to the address above by November 30, 2018.

Should additional information be required, please contact me at 305-755-7952. Your cooperation in this matter is appreciated.

Sincerely,

**Alissa Turtletaub, M.S.**

**Senior Planner, Planning and Design Excellence  
Miami Dade County Parks, Recreation and Open Spaces**

275 NW 2nd Street, 4th Floor, Miami, Florida 33128

305-755-7952 Phone ~ 305-755-7864 Fax

[alissa@miamidade.gov](mailto:alissa@miamidade.gov)

[www.miamidade.gov/parks](http://www.miamidade.gov/parks)

***"Delivering Excellence Every Day"***

Appendix B – Correspondence with:

AT&T FL

AT&T Corp

Atlantic Broadband

CenturyLink Level 3 (Lumen)

Comcast

Crown Castle

Fiberlight (Atlantic Broadband)

Florida City Gas

Florida Gas Transmission

FPL Distribution

FPL Transmission

Hotwire

MCI/Verizon

Miami-Dade County Public Schools

Miami-Dade DTPW

Miami-Dade ITD

Miami-Dade Traffic Signals Dept

Miami-Dade WASD



## Sandoval, Ana

---

**From:** Dopico, Frank (ITD) <Frank.Dopico@miamidade.gov>  
**Sent:** Monday, October 22, 2018 4:36 PM  
**To:** Turtletaub, Alissa (MDPR)  
**Cc:** Soper, Dawn (ISD); Kuhn, Nick; Boucle, Julio; Sandoval, Ana; Heinicke, Mark (MDPR); Schmekel, Lars (ITD); Aguirre, Juan (ITD)  
**Subject:** RE: Ludlam Corridor - Miami Dade ITD Facilities  
**Attachments:** Ludlam Corridor.pdf; Ludlam Corridor markup sketch.pdf; Project Location Mark up Ludlam Corridor.pdf; Ludlam Corridor markup BASEMAP 64.pdf; ludlam Corridor markup BASEMAP 80.pdf

Dear Alissa,

In regards to your project:

Project Description: Project Development and Environment Study for Ludlam Trail  
Project Location: Former railroad corridor from SW 80<sup>th</sup> Street to NW 7<sup>th</sup> Street at approximately NW/SW 69<sup>th</sup> Avenue  
Project Number: 403502-15-001-14470619  
ETDM Number: 14369  
County: Miami-Dade

- Please note that Miami-Dade County IT Department has a buried fiber cable crossing that may be impacted by your project area. These are all EXISTING facilities. There are no plans to change them.
- The area in question is specifically located underneath, and parallel to, the grass right of way on the South side of SW 64<sup>th</sup> ST (Hardee Drive), as it crosses under the Ludlam trail.
- There is another fiber near the end of your project but it's not in conflict. It is on the South side (grass right of way) of SW 80<sup>th</sup> ST; near the very end of your project area. Please make note.

As this land area (Ludlam trail) was once part of the Florida East Coast Railway, please note that the buried fiber may have most likely been buried deeper than usual (over 36" to go under the railroad tracks). This may allow for "no conflict" issues for any "surface work" such as grading and milling of the asphalt or grass area.

Nonetheless, I am submitting an As-built sketch and several marked up drawings of the path our fiber takes within your project area. Please inform your construction personnel to dig carefully (or avoid digging specifically) in that particular area.

Should you need any further information on this, let me know.

Thank you,

*Frank L. Dopico*  
Miami-Dade County - IT Dept. (ITD)  
5680 SW 87 Avenue, Suite 213

Miami, FL 33173  
Phone: 305-275-7813  
Email: [Frank.Dopico@miamidade.gov](mailto:Frank.Dopico@miamidade.gov)



---

**From:** Turtletaub, Alissa (MDPR)  
**Sent:** Monday, October 22, 2018 3:45 PM  
**To:** Dopico, Frank (ITD)  
**Cc:** Soper, Dawn (ISD); Kuhn, Nick; Boucle, Julio; Sandoval, Ana; Heinicke, Mark (MDPR); Schmekel, Lars (ITD); Aguirre, Juan (ITD)  
**Subject:** Ludlam Corridor - Miami Dade ITD Facilities

Good afternoon,

The Miami-Dade County Parks, Recreation and Open Spaces (MDPROS) Department is in the development phase for evaluation of design alternatives and final location design approval relating to the Ludlam Trail.

To assist us in selection of the most feasible design alternative while minimizing conflicts with your facilities, your input is needed. This request is separate and distinct from the request for assignment of any existing license agreement or other agreements, forwarded recently by FECI affiliates FECI LT1, LLC and LR13-18, LLC.

Please indicate on the attached maps your principal existing and proposed facilities and return a completed marked up set via email or by mail to the following address. Along with the plans, please present any general concerns and/or comments that would be useful in MDPROS' evaluation process.

**AECOM Technical Services, Inc.**  
**Attn: Ana Sandoval, PE**  
**7650 Corporate Center Drive, Suite 200**  
**Miami, Florida 33126**  
[ana.sandoval@aecom.com](mailto:ana.sandoval@aecom.com)

If your facilities are located on compensable property interests within the limits of this project, you may be eligible to have your relocation costs reimbursed by MDPROS. If you have any of the above interests, please mark the approximate boundaries of them on the enclosed set of plans and return to the address above, together with documentation of your interests and a preliminary cost estimate.

Include in your transmittal, on utility agency/owner letterhead, a statement as to whether or not you will claim reimbursement and on what basis your claim is supported. Note that the information provided at this time will be used only for evaluation of design alternatives and does not constitute a claim.

Please note that failure to respond to this request will result in plans development without identification of your facilities. In order to maintain project schedules, please return the marked-up plans with your transmittal to the address above by November 30, 2018.

Should additional information be required, please contact me at 305-755-7952. Your cooperation in this matter is appreciated.

Sincerely,

**Alissa Turtletaub, M.S.**

**Senior Planner, Planning and Design Excellence**  
**Miami Dade County Parks, Recreation and Open Spaces**  
275 NW 2nd Street, 4th Floor, Miami, Florida 33128  
305-755-7952 Phone ~ 305-755-7864 Fax  
[alissa@miamidade.gov](mailto:alissa@miamidade.gov)

[www.miamidade.gov/parks](http://www.miamidade.gov/parks)  
**"Delivering Excellence Every Day"**

Appendix B – Correspondence with:

AT&T FL

AT&T Corp

Atlantic Broadband

CenturyLink Level 3 (Lumen)

Comcast

Crown Castle

Fiberlight (Atlantic Broadband)

Florida City Gas

Florida Gas Transmission

FPL Distribution

FPL Transmission

Hotwire

MCI/Verizon

Miami-Dade County Public Schools

Miami-Dade DTPW

Miami-Dade ITD

Miami-Dade Traffic Signals Dept

Miami-Dade WASD

## Sandoval, Ana

---

**From:** Turtletaub, Alissa (MDPR) <Alissa.Turtletaub@miamidade.gov>  
**Sent:** Wednesday, October 24, 2018 9:02 AM  
**To:** Diaz, Claudia (DTPW)  
**Cc:** Heinicke, Mark (MDPR); Aira, Frank (DTPW); Kuhn, Nick; Boucle, Julio; Sandoval, Ana  
**Subject:** RE: Ludlam Corridor - Miami Dade Traffic Signal Facilities

Good morning Ana,

The alternatives for the PD&E project have not been completed yet, and we will be sharing those at a later date. Caltran is currently working on a traffic study as a sub-consultant to AECOM, the primary consultant managing the Ludlam Trail PD&E process on behalf of PROS. While we understand pedestrian bridge overpasses would be the preferred means for north/south travel on the Ludlam Trail, funding constraints and capital improvement logistics may limit the feasibility of overpasses at each point the trail traverses over a public right of way; as you had astutely stated below.

The request at this time is for DTPW to locate any existing traffic signal facilities on the base maps provided as attached to the original email. Please let us know if you have any other questions regarding this stage in the process or the current request.

Sincerely,

**Alissa Turtletaub, M.S.**

**Senior Planner, Planning and Design Excellence**  
**Miami Dade County Parks, Recreation and Open Spaces**  
275 NW 2nd Street, 4th Floor, Miami, Florida 33128  
305-755-7952 Phone ~ 305-755-7864 Fax  
[alissa@miamidade.gov](mailto:alissa@miamidade.gov)

[www.miamidade.gov/parks](http://www.miamidade.gov/parks)  
**"Delivering Excellence Every Day"**

---

**From:** Diaz, Claudia (DTPW)  
**Sent:** Tuesday, **October 23, 2018** 5:46 PM  
**To:** Turtletaub, Alissa (MDPR) <Alissa.Turtletaub@miamidade.gov>  
**Cc:** Heinicke, Mark (MDPR) <Mark.Heinicke@miamidade.gov>; Aira, Frank (DTPW) <Frank.Aira@miamidade.gov>  
**Subject:** RE: Ludlam Corridor - Miami Dade Traffic Signal Facilities

Alissa,

I don't understand this request, there are not design alternatives attached for review on this email.

In terms of traffic, overpasses will be the best approach at all location to avoid stopping east-west traffic; but I understand this cannot be achieved at all locations. It is my understanding that Caltran is doing a study for Parks along this corridor (the traffic part of a bigger study) that will include the analysis of all the intersections.

Sincerely,

**Claudia P. Diaz, P.E.**

*Chief Engineer, Traffic Engineering*

*Miami-Dade Department of Transportation and Public Works (DTPW)*

*111 NW 1<sup>st</sup> Street, Suite 1510, Miami, Florida 33128*

*Phone: 305-375-2030*

*e-mail address: [cdiaz@miamidade.gov](mailto:cdiaz@miamidade.gov)*

---

**From:** Turtletaub, Alissa (MDPR)

**Sent:** Monday, October 22, 2018 4:01 PM

**To:** Aira, Frank (DTPW) <[Frank.Aira@miamidade.gov](mailto:Frank.Aira@miamidade.gov)>; Diaz, Claudia (DTPW) <[Claudia.Diaz@miamidade.gov](mailto:Claudia.Diaz@miamidade.gov)>

**Cc:** Fernandez, Darlene (DTPW) <[Darlene.Fernandez@miamidade.gov](mailto:Darlene.Fernandez@miamidade.gov)>; Kuhn, Nick <[Nick.Kuhn@aecom.com](mailto:Nick.Kuhn@aecom.com)>; Boucle, Julio <[julio.boucle@aecom.com](mailto:julio.boucle@aecom.com)>; Sandoval, Ana <[ana.sandoval@aecom.com](mailto:ana.sandoval@aecom.com)>; Heinicke, Mark (MDPR) <[Mark.Heinicke@miamidade.gov](mailto:Mark.Heinicke@miamidade.gov)>

**Subject:** FW: Ludlam Corridor - Miami Dade Traffic Signal Facilities

Good afternoon,

The Miami-Dade County Parks, Recreation and Open Spaces (MDPROS) Department is in the development phase for evaluation of design alternatives and final location design approval relating to the Ludlam Trail.

To assist us in selection of the most feasible design alternative while minimizing conflicts with your facilities, your input is needed. This request is separate and distinct from the request for assignment of any existing license agreement or other agreements, forwarded recently by FECI affiliates FECI LT1, LLC and LR13-18, LLC.

Please indicate on the attached maps your principal existing and proposed facilities and return a completed marked up set via email or by mail to the following address. Along with the plans, please present any general concerns and/or comments that would be useful in MDPROS' evaluation process.

**AECOM Technical Services, Inc.**

**Attn: Ana Sandoval, PE**

**7650 Corporate Center Drive, Suite 200**

**Miami, Florida 33126**

**[ana.sandoval@aecom.com](mailto:ana.sandoval@aecom.com)**

If your facilities are located on compensable property interests within the limits of this project, you may be eligible to have your relocation costs reimbursed by MDPROS. If you have any of the above interests, please mark the approximate boundaries of them on the enclosed set of plans and return to the address above, together with documentation of your interests and a preliminary cost estimate.

Include in your transmittal, on utility agency/owner letterhead, a statement as to whether or not you will claim reimbursement and on what basis your claim is supported. Note that the information provided at this time will be used only for evaluation of design alternatives and does not constitute a claim.

Please note that failure to respond to this request will result in plans development without identification of your facilities. In order to maintain project schedules, please return the marked-up plans with your transmittal to the address above by November 30, 2018.

Should additional information be required, please contact me at 305-755-7952. Your cooperation in this matter is appreciated.

Sincerely,

**Alissa Turtletaub, M.S.**

**Senior Planner, Planning and Design Excellence**  
**Miami Dade County Parks, Recreation and Open Spaces**  
275 NW 2nd Street, 4th Floor, Miami, Florida 33128  
305-755-7952 Phone ~ 305-755-7864 Fax  
[alissa@miamidade.gov](mailto:alissa@miamidade.gov)

[www.miamidade.gov/parks](http://www.miamidade.gov/parks)  
**"Delivering Excellence Every Day"**

Appendix B – Correspondence with:

AT&T FL

AT&T Corp

Atlantic Broadband

CenturyLink Level 3 (Lumen)

Comcast

Crown Castle

Fiberlight (Atlantic Broadband)

Florida City Gas

Florida Gas Transmission

FPL Distribution

FPL Transmission

Hotwire

MCI/Verizon

Miami-Dade County Public Schools

Miami-Dade DTPW

Miami-Dade ITD

Miami-Dade Traffic Signals Dept

Miami-Dade WASD



## Sandoval, Ana

---

**From:** Nogueira, Edith (WASD) <Edith.Nogueira@miamidade.gov>  
**Sent:** Friday, November 02, 2018 3:03 PM  
**To:** Sandoval, Ana; Turtletaub, Alissa (MDPR)  
**Cc:** Chong, Patrick A. (WASD)  
**Subject:** Ludlam Corridor - Miami Dade WASD Facilities as-built & Atlas -(2018-MDPR-001)- 1 of 3  
**Attachments:** AB\_d9kD.zip; es5461-11.tif; es5688-76.tif; es5688-80.tif; es8816-2.tif; es8973-1.tif

Good afternoon Ms. Sandoval & Ms. Turtletaub,

Due to the sizes of the as-builts, I will be sending the records in 3 separated e-mails.

Attached please find the list of existing WASD utility records within the project limits pertinent to the project mentioned above.

- Please provide updated plans for further utility coordination/ review and proposed design completion and start of construction for the subject project
- Be advised that if this project is a Design Build it is recommended that the DB team enter a Water and Sewer agreement to facilitate any relocation/replacement of existing WASD utilities affected by the proposed work”.
- **Please confirm receipt of this email.**
- If you have any questions, please don't hesitate to contact me at [Edith.Nogueira@miamidade.gov](mailto:Edith.Nogueira@miamidade.gov) or at 786-552-4417.

Regards,

**Edith Nogueira**

Construction Project Supervisor I  
Utility Coordination Unit  
Planning and Modeling Section  
**Miami-Dade Water and Sewer Department**  
786-552-4417

[www.miamidade.gov/water](http://www.miamidade.gov/water)

**Connect With Us** on [Facebook](#) | [Twitter](#) | [Instagram](#) | [YouTube](#)



# APPENDIX C

## Utility Documentation/Mark Ups

Appendix C – Mark Ups from:

AT&T FL

AT&T Corp

Atlantic Broadband

CenturyLink Level 3 (Lumen)

Comcast

Crown Castle

Fiberlight (Atlantic Broadband)

Florida City Gas

Florida Gas Transmission

FPL Distribution

FPL Transmission

Hotwire

MCI/Verizon

Miami-Dade County Public Schools

Miami-Dade DTPW

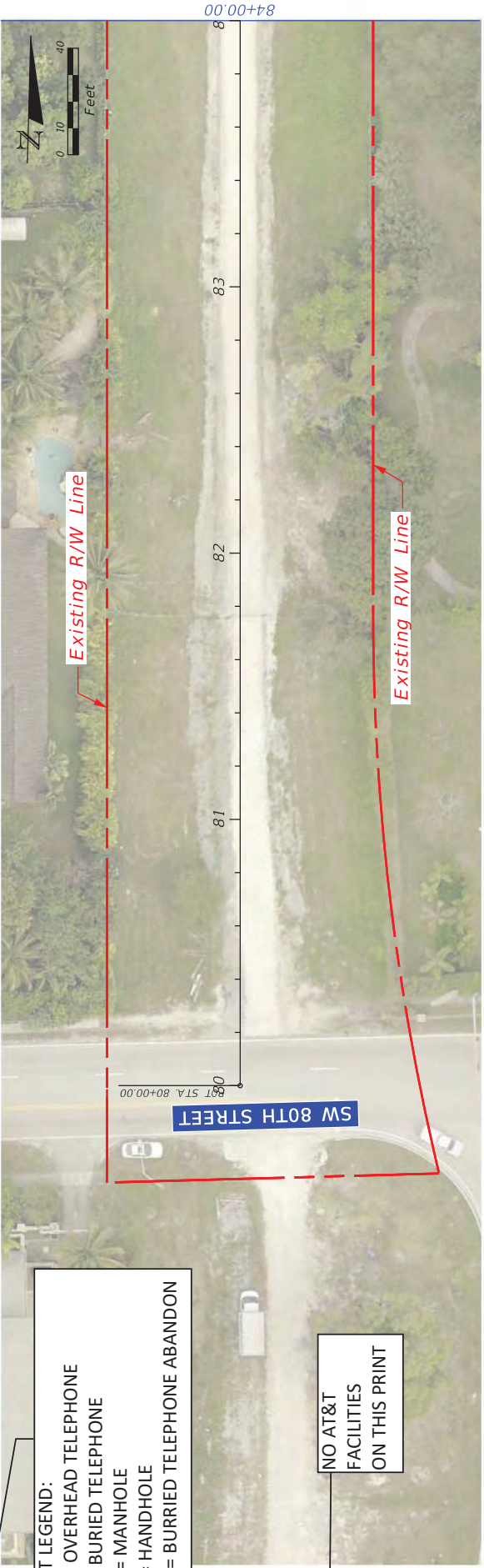
Miami-Dade ITD

Miami-Dade Traffic Signals Dept

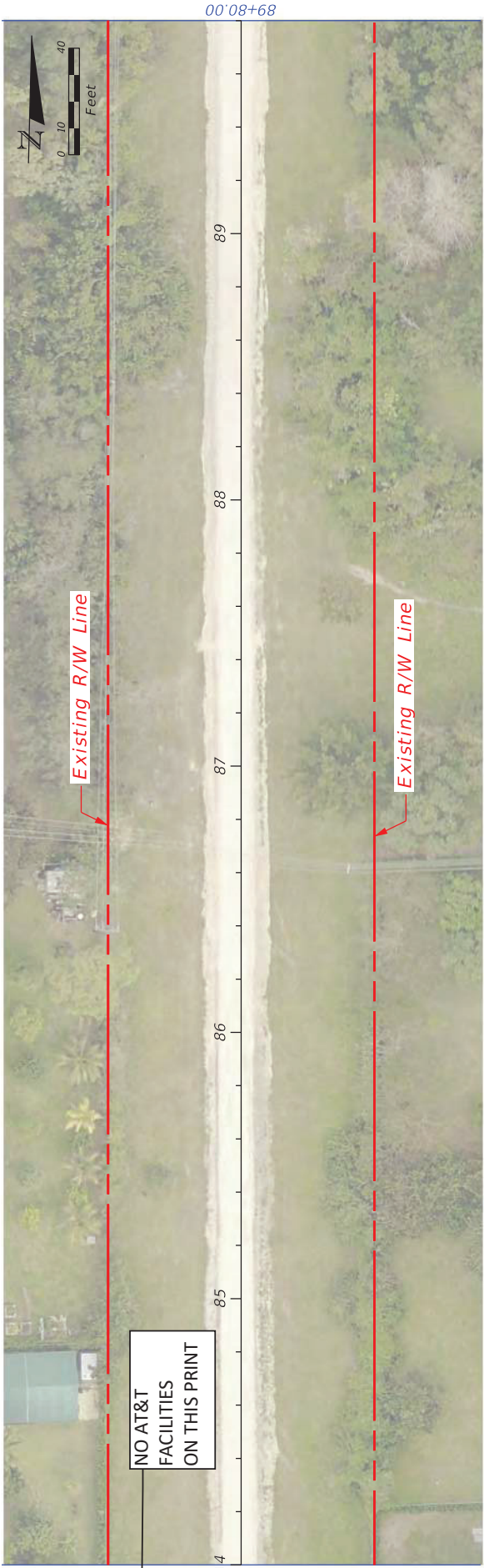
Miami-Dade WASD

AT&T LEGEND:  
OT = OVERHEAD TELEPHONE  
BT = BURIED TELEPHONE  
MH = MANHOLE  
HH = HANDHOLE  
BTA = BURIED TELEPHONE ABANDON

NO AT&T  
FACILITIES  
ON THIS PRINT



NO AT&T  
FACILITIES  
ON THIS PRINT



DATE	REVISIONS	
	DESCRIPTION	DATE



Miami-Dade County Parks, Recreation, and Open Spaces (MDPROS)	Hickman Building 275 NW 2nd Street Miami, FL 33128 305-355-7800	P&R CONTRACT NO.
		MDPROS NO.
		4350215-001-14470619

BASE MAP	
SHEET NO.	01

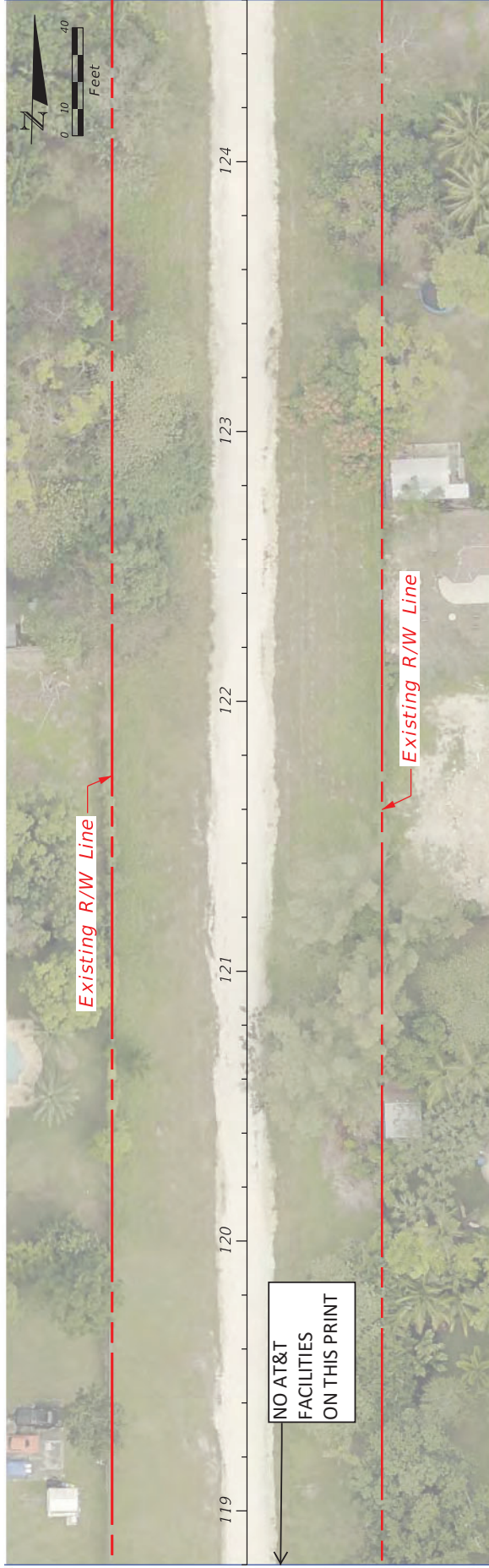












DATE	DESCRIPTION	DATE	DESCRIPTION



Miami-Dade County  
 Parks, Recreation, and  
 Open Spaces  
 (MDPROS)

Hickman Building  
 275 NW 2nd Street  
 Miami, FL 33128  
 305/755-7800

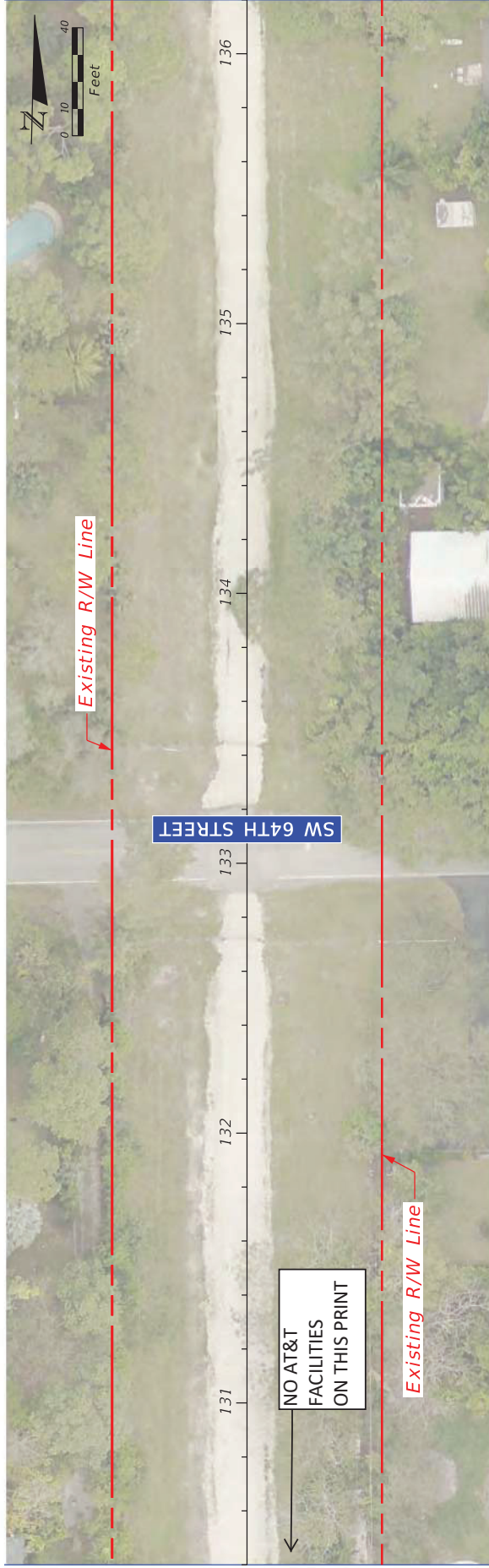
P&R CONTRACT NO.  
 4350215-001-14470619  
 P&R PROJECT NO.  
 4350215-001-14470619

# BASE MAP

SHEET NO.

04





DATE	DESCRIPTION	REVISIONS	DATE	DESCRIPTION



Miami-Dade County  
 Parks, Recreation, and  
 Open Spaces  
 (MDPROS)

Hickman Building  
 275 NW 2nd Street  
 Miami, FL 33128  
 305-755-7800

LUDLAM TRAIL CORRIDOR PD&E STUDY P&E CONTRACT NO. 4350215-001-14470619	SHEET NO.
BASE MAP	05

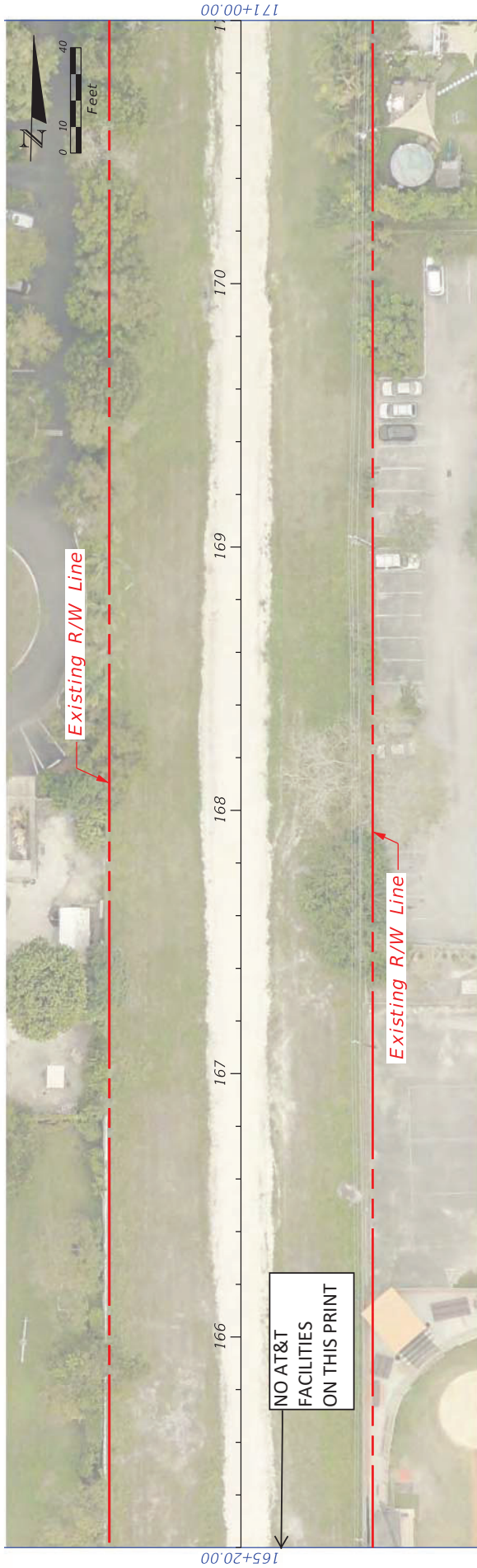
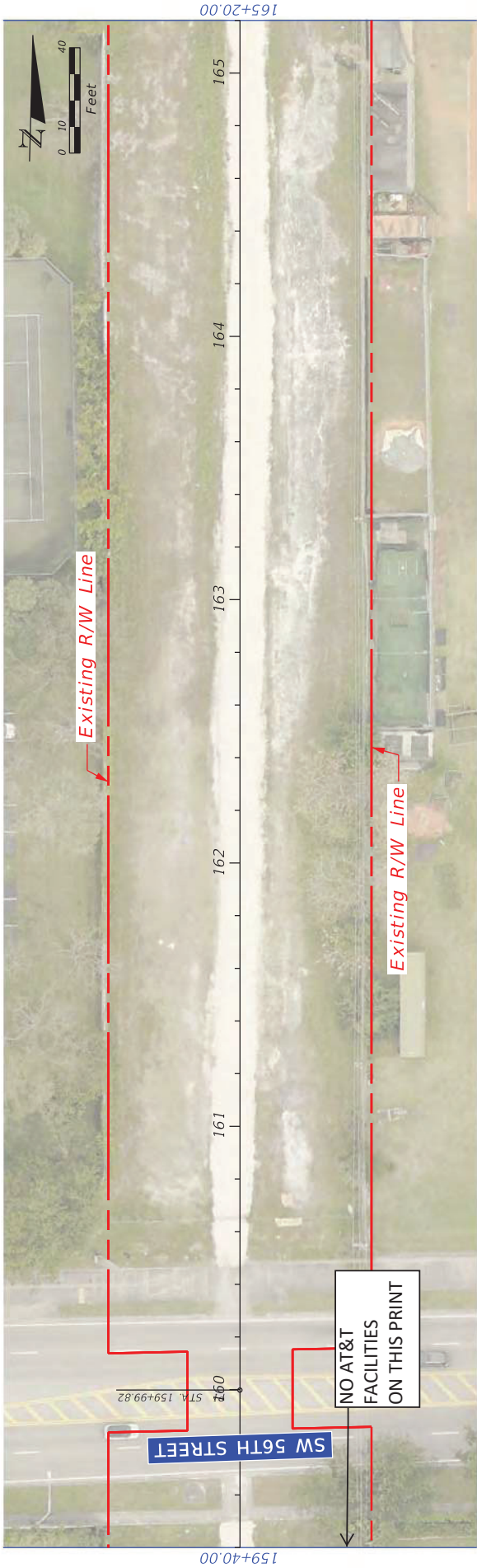






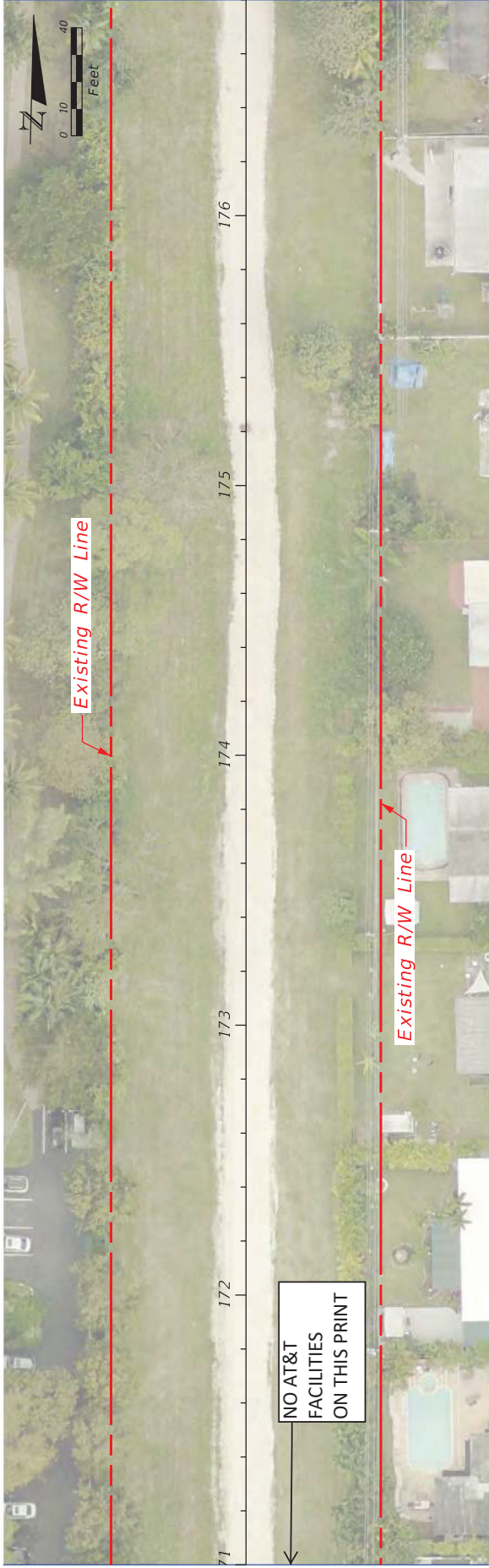






REVISIONS		DESCRIPTION	
DATE	DESCRIPTION	DATE	DESCRIPTION
<div> <div> </div> <div> <p>MIAMI-DADE COUNTY</p> </div> </div>			
<div> <div> <p>MIAMI-DADE County Parks, Recreation, and Open Spaces (MDPROS)</p> </div> <div> <p>Hickman Building 275 NW 2nd Street Miami, FL 33128 305-755-7800</p> </div> </div>		<div> <div> <p>PRC CONTRACT NO. 43502-15-001-14470619</p> </div> <div> <p>PRC PROJECT NO. 43502-15-001-14470619</p> </div> </div>	
<div> <div> <p>LUDLAM TRAIL CORRIDOR P&amp;E STUDY</p> </div> </div>		<div> <div> <p>BASE MAP</p> </div> </div>	
SHEET NO.		08	





DATE	DESCRIPTION	DATE	DESCRIPTION

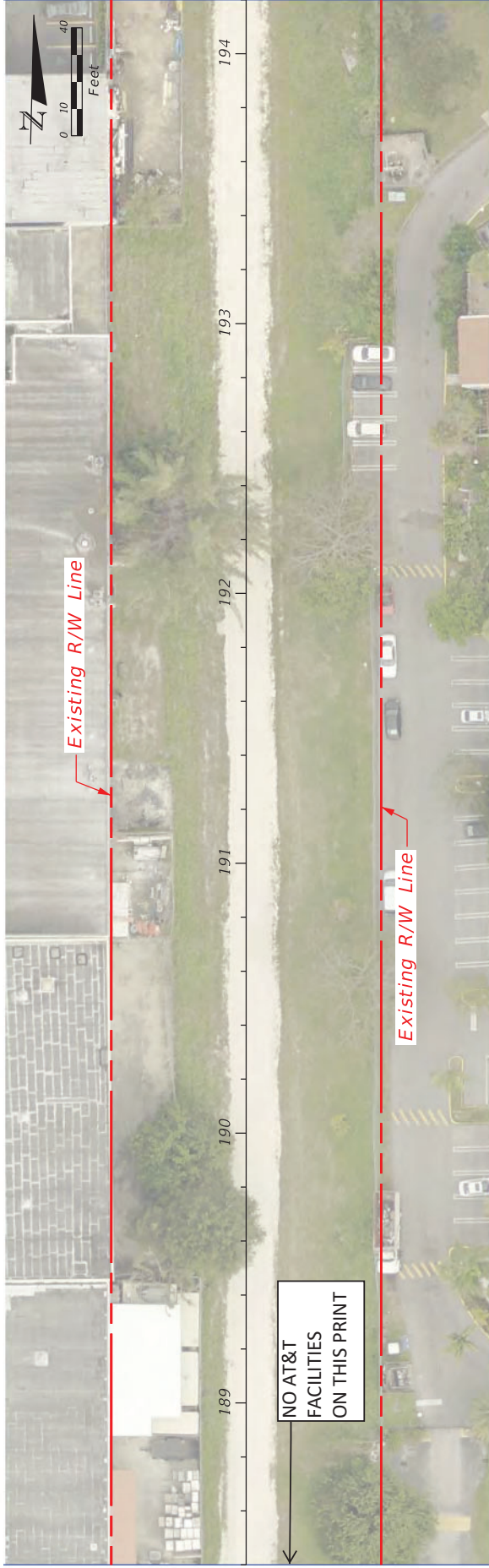
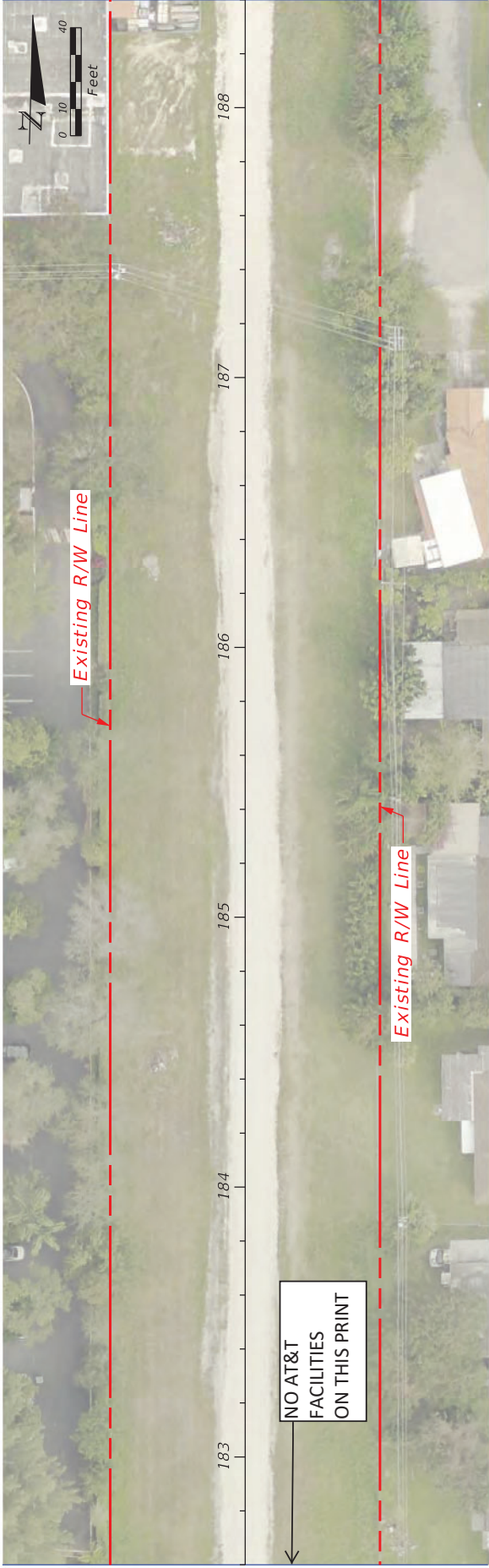


Ludlam Trail Corridor P&E Study  
 Miami-Dade County  
 Parks, Recreation, and  
 Open Spaces  
 (MDPROS)  
 Hickman Building  
 275 NW 2nd Street  
 Miami, FL 33128  
 305/355-7800

P&E CONTRACT NO.	4350215-001-14470619
PROJECT NO.	4350215-001-14470619
P&E PROJECT NO.	4350215-001-14470619

BASE MAP  
 SHEET NO. 09





DATE	DESCRIPTION	DATE	DESCRIPTION



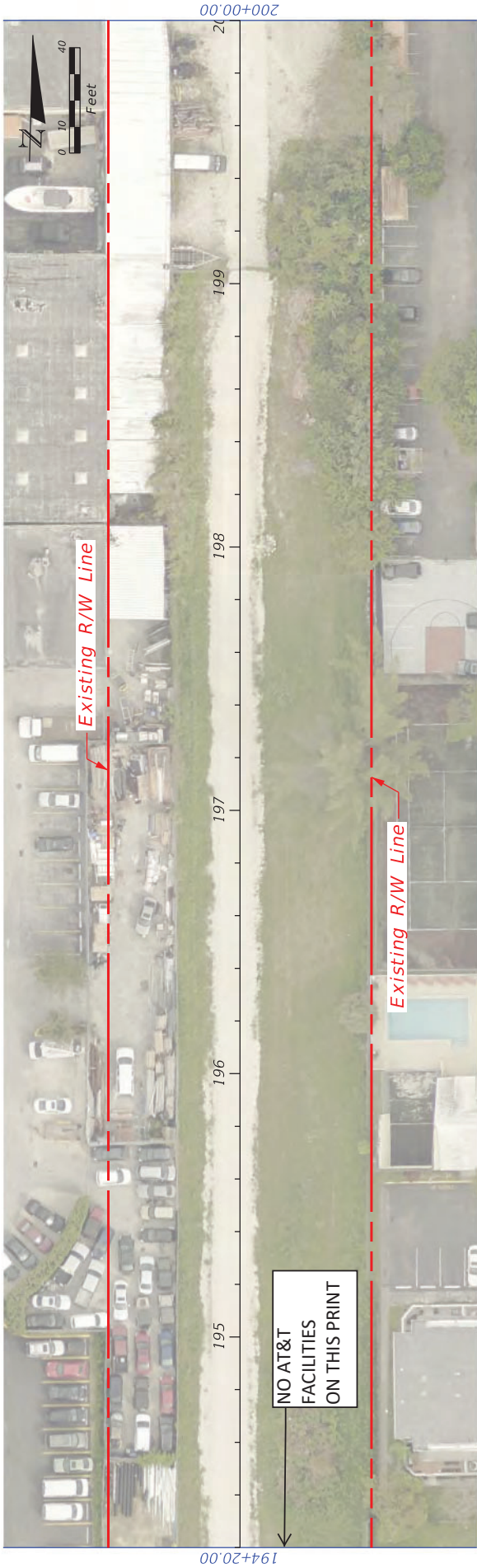
LUDLAM TRAIL CORRIDOR PD&E STUDY

Miami-Dade County parks, Recreation, and Open Spaces (MDPROS)	Hickman Building 275 NW 2nd Street Miami, FL 33128 305-755-7800	P&R CONTRACT NO.
		RFQ 7868
		P&R PROJECT NO.
		43502-15-001-14470619

BASE MAP

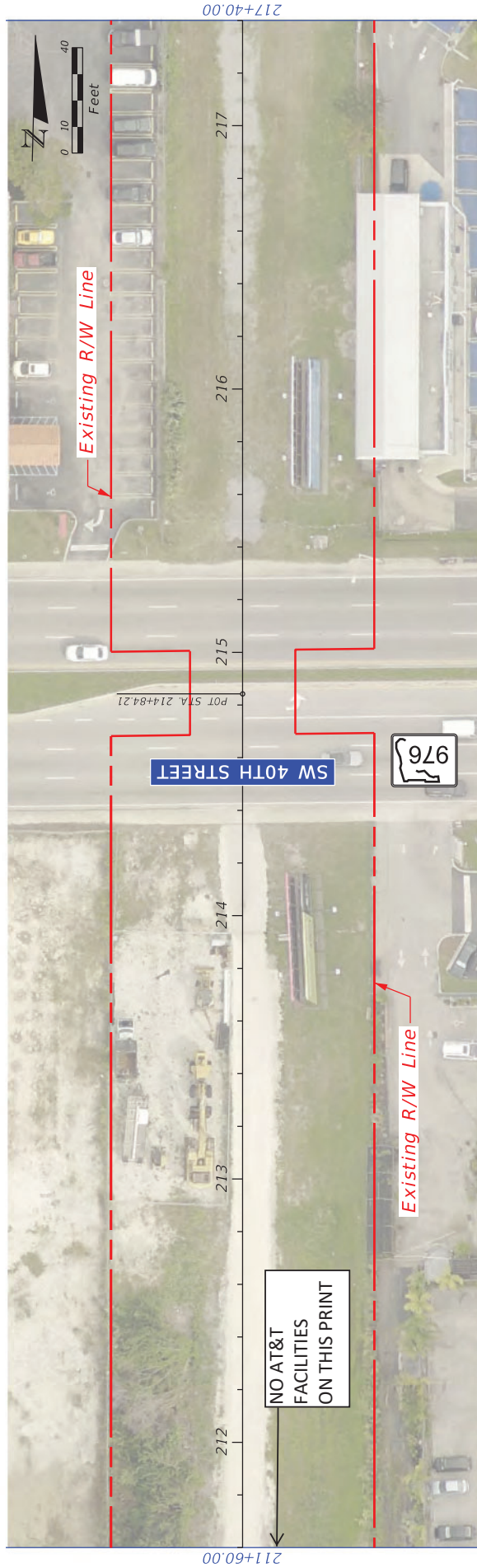
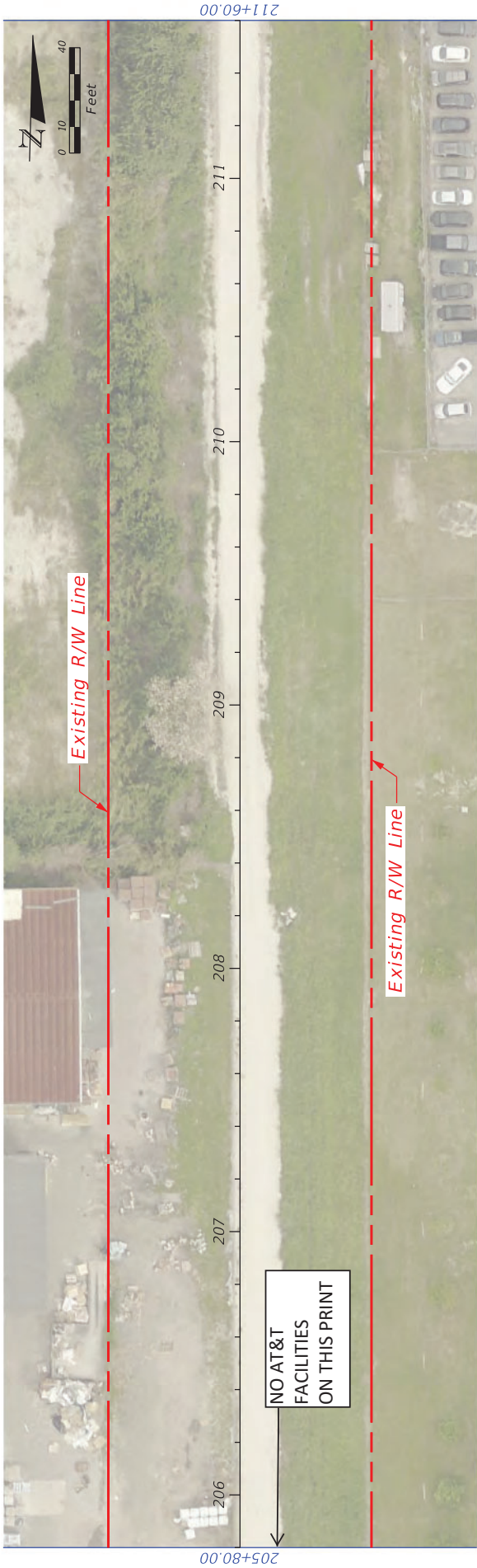
SHEET NO.

10



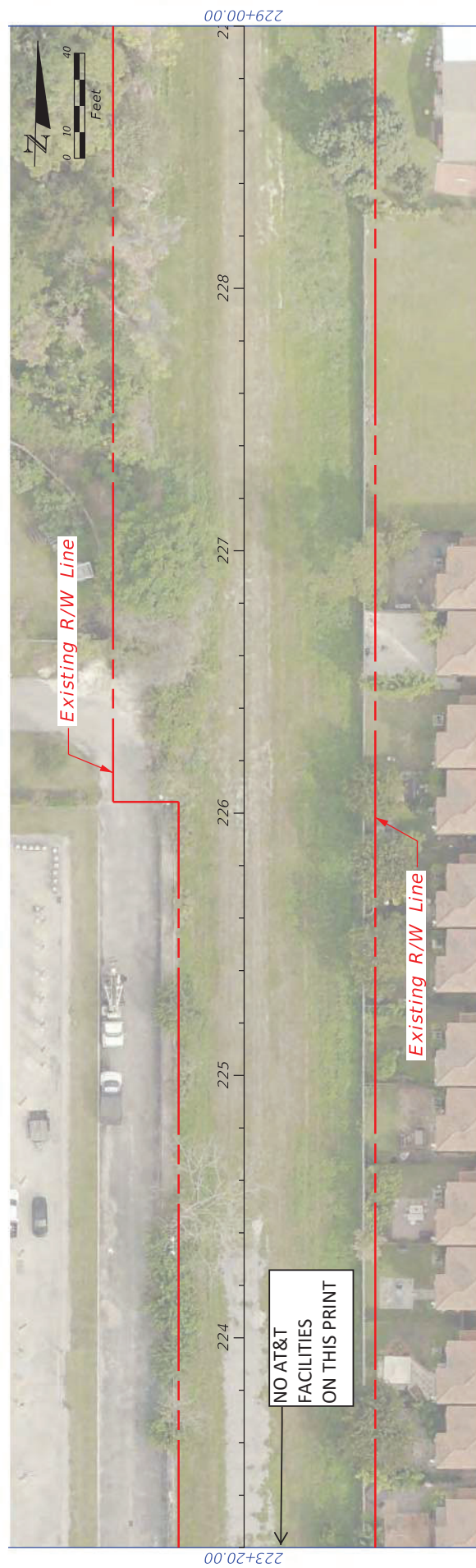
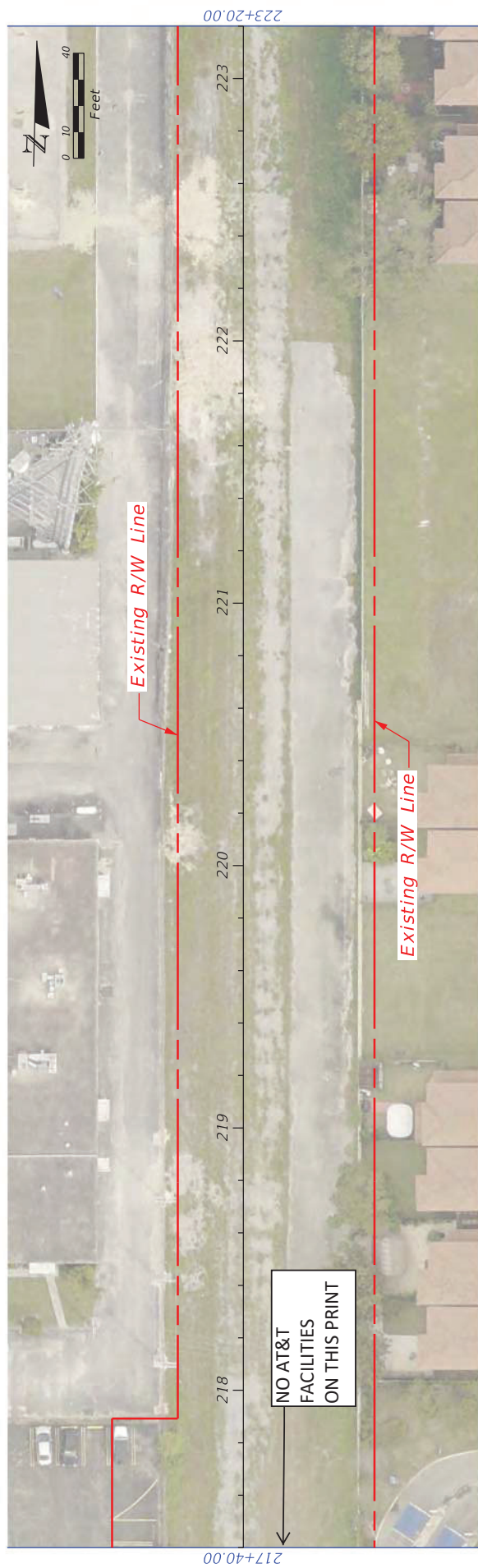
REVISIONS		DESCRIPTION	
DATE	DESCRIPTION	DATE	DESCRIPTION
<div> <div> </div> <div> <p>MIAMI-DADE COUNTY</p> </div> </div>			
<div> <div> <p>LUDLAM TRAIL CORRIDOR P&amp;E STUDY</p> </div> <div> <p>Miami-Dade County Parks, Recreation, and Open Spaces (MDPROS)</p> </div> <div> <p>Hickman Building 275 NW 2nd Street Miami, FL 33128 305-355-7800</p> </div> <div> <p>P&amp;E CONTRACT NO. MDPROS P&amp;E PROJECT NO. 4350215-001-14470619</p> </div> </div>			
BASE MAP			SHEET NO.
			11





REVISIONS			LUDLAM TRAIL CORRIDOR PD&E STUDY			BASE MAP			SHEET NO.  12		
DESCRIPTION		DATE	DESCRIPTION		DESCRIPTION						
DATE											
											
			MIAMI-DADE COUNTY			Miami-Dade County Parks, Recreation, and Open Spaces (MDPROS)			Hickman Building 275 NW 2nd Street Miami, FL 33128 305-755-7800		
						P&E CONTRACT NO. RFQ 786B			P&E PROJECT NO. 43502-15-001-14470619		
						P&E PROJECT NO. 43502-15-001-14470619					





DATE		DESCRIPTION		REVISIONS		 <b>MIAMI-DADE</b> <b>COUNTY</b>	<b>LUDLAM TRAIL CORRIDOR PD&amp;E STUDY</b>	<b>BASE MAP</b>	SHEET NO. 13
DATE		DESCRIPTION		DATE					





						<i>LUDLAM TRAIL CORRIDOR PD&amp;E STUDY</i>		<i>BASE MAP</i>		SHEET NO.  14
DATE	DESCRIPTION	DATE	DESCRIPTION	Miami-Dade County Parks, Recreation, and Open Spaces (MDPROS)		Hickman Building 275 NW 2nd Street Miami, FL 33128 305-755-7800		P&R CONTRACT NO. RFQ 786B	P&R PROJECT NO. 43502-15-001-14470619	

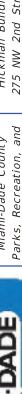




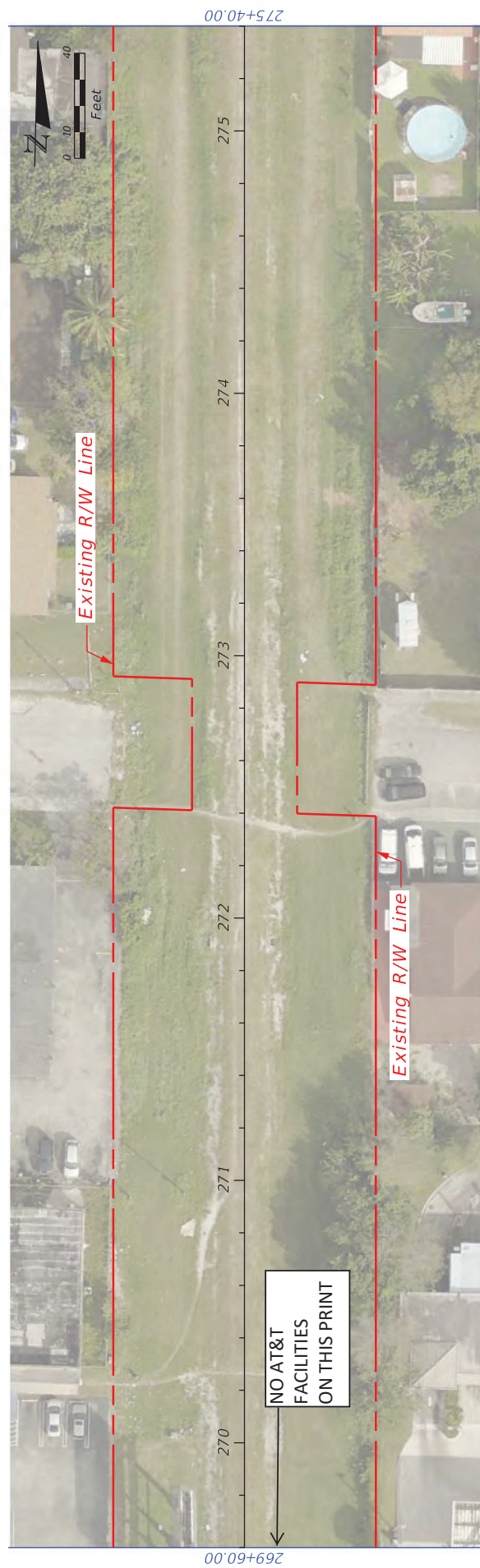
DATE		DESCRIPTION		REVISIONS						<b>BASE MAP</b>	SHEET NO.  15
DATE		DESCRIPTION		DATE		DESCRIPTION		DATE			





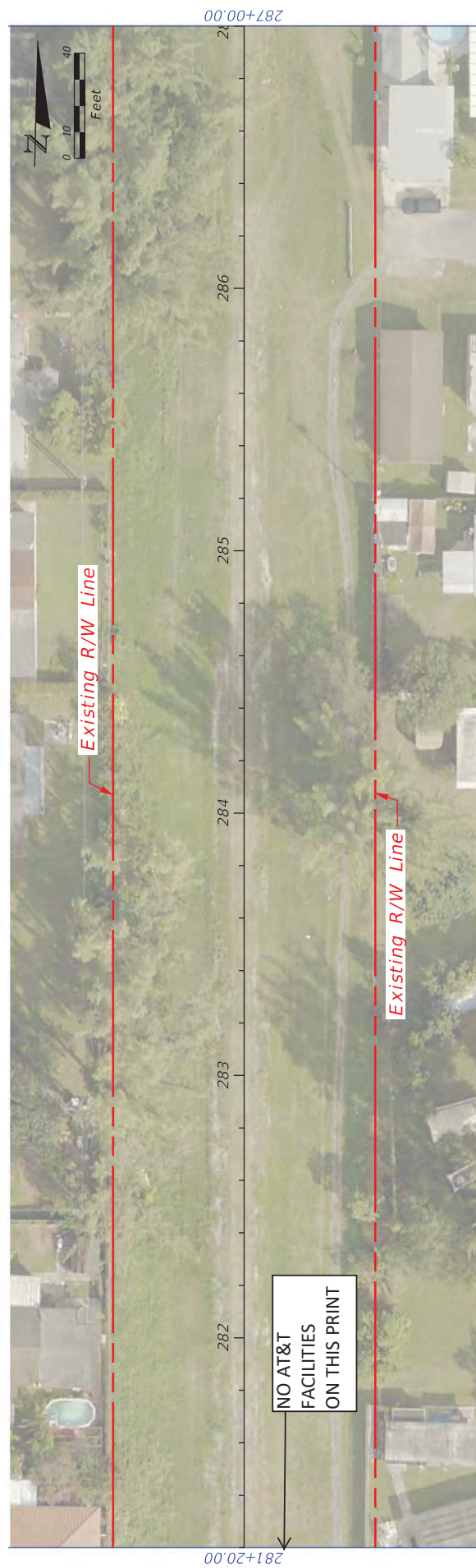
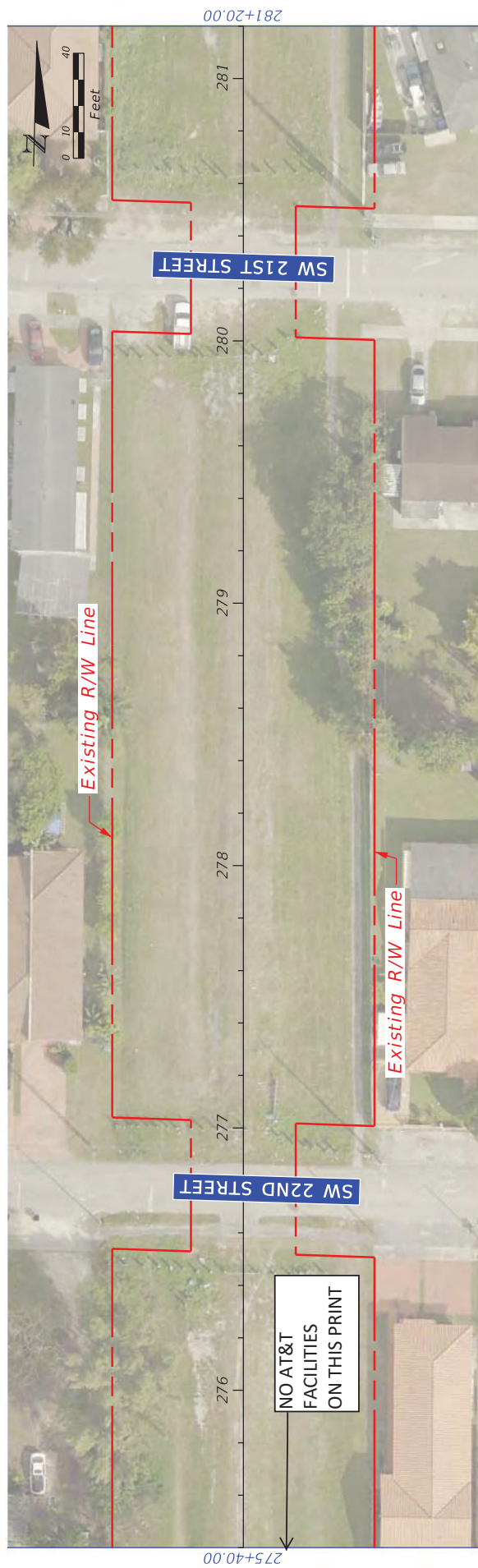
DATE		DESCRIPTION		REVISIONS			<b>MIAMI-DADE COUNTY</b>	<b>LUDLAM TRAIL CORRIDOR PD&amp;E STUDY</b>	<b>BASE MAP</b>	SHEET NO. 16
DATE		DESCRIPTION		DATE						
DATE		DESCRIPTION		DATE						






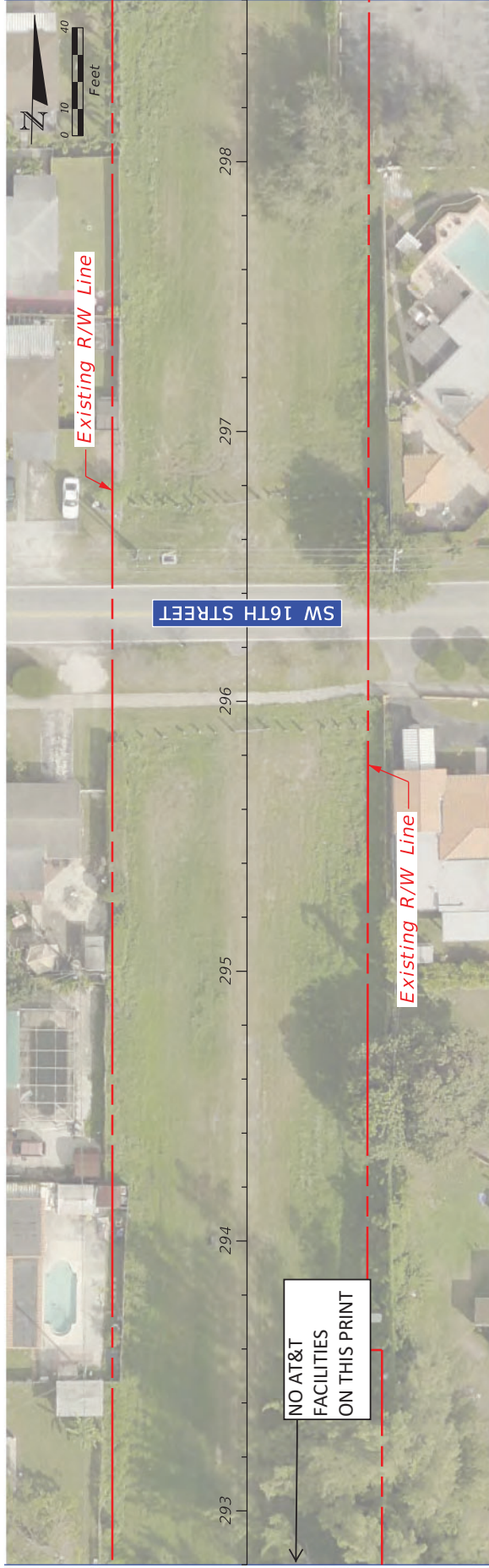
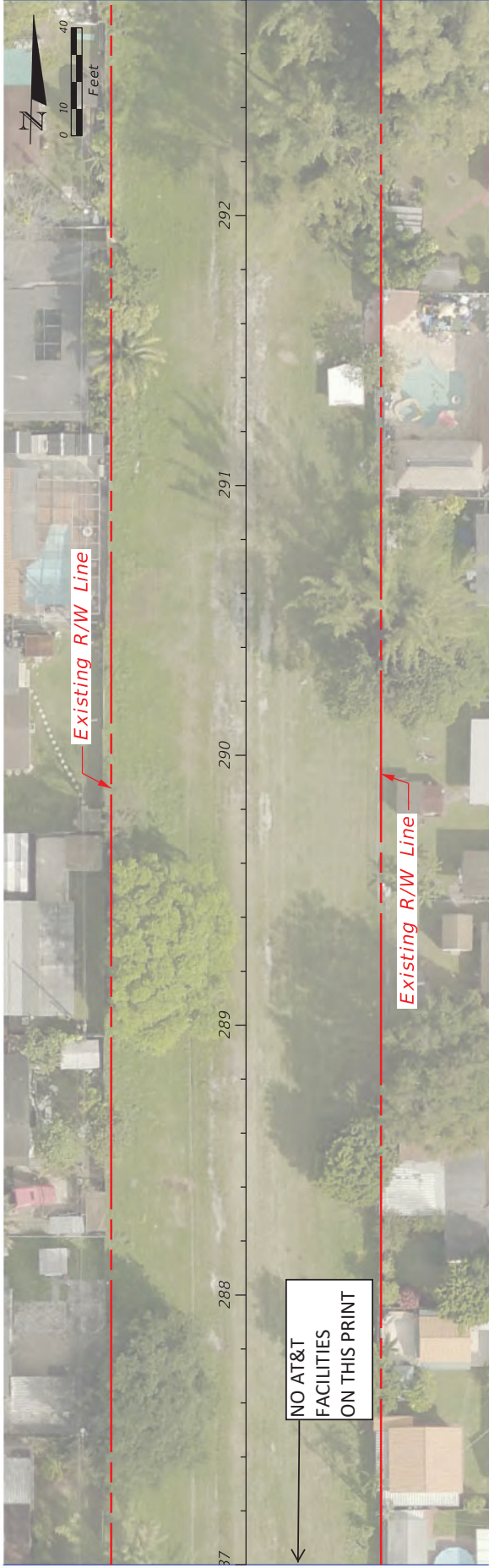
REVISIONS		LUDLAM TRAIL CORRIDOR PD&E STUDY		SHEET NO.
DATE	DESCRIPTION	DATE	DESCRIPTION	
<div><div><div>MIAMI-DADE COUNTY</div></div><div><div>Miami-Dade County Parks, Recreation, and Open Spaces (MDPROS)</div><div>Hickman Building 275 NW 2nd Street Miami, FL 33128 305-755-7800</div></div></div>				BASE MAP
		P&R CONTRACT NO.		
		RFQ 786B		
		P&R PROJECT NO.		
		43502-15-001-14470619		
				17





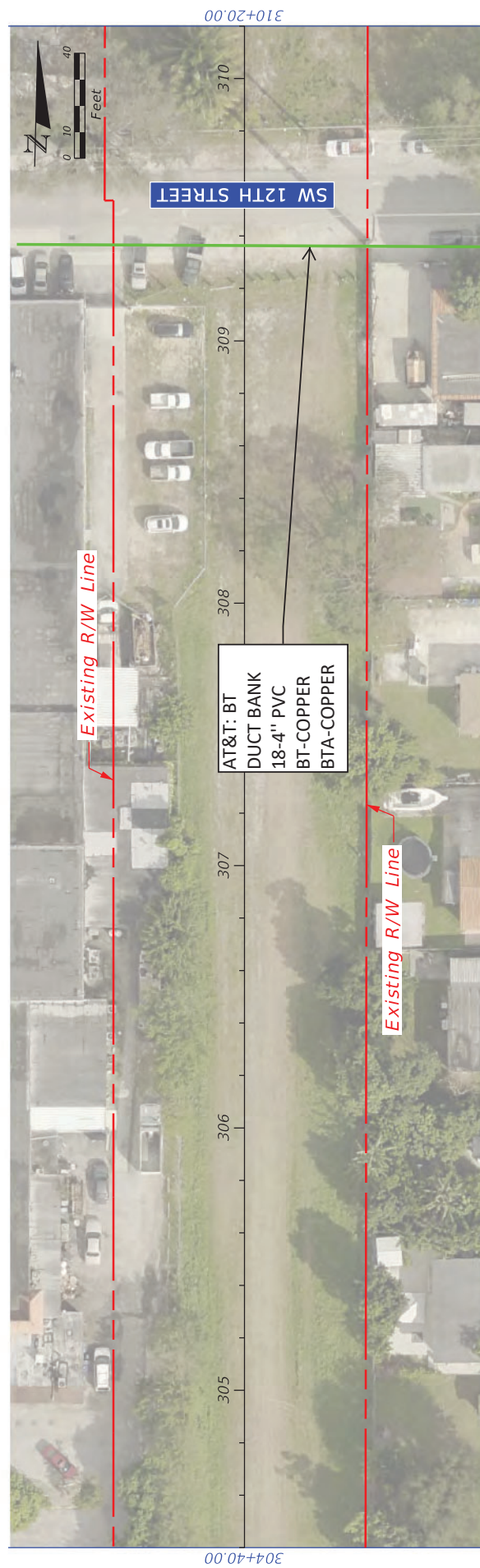
REVISIONS				LUDLAM TRAIL CORRIDOR PD&E STUDY	BASE MAP	SHEET NO.
DATE	DESCRIPTION	DATE	DESCRIPTION			
				<div><div><div><div><div></div><div>MIAMI-DADE COUNTY</div></div></div><div>Miami-Dade County Parks, Recreation and Open Spaces (APPROX.)</div><div>Hickman Building 275 NW 2nd Street Miami, FL 33128</div><div>P&amp;R CONTRACT NO. RFO 786B</div><div>P&amp;R PROJECT NO. J350015.001.14470610 20E-TEE-72002</div></div></div>	18	





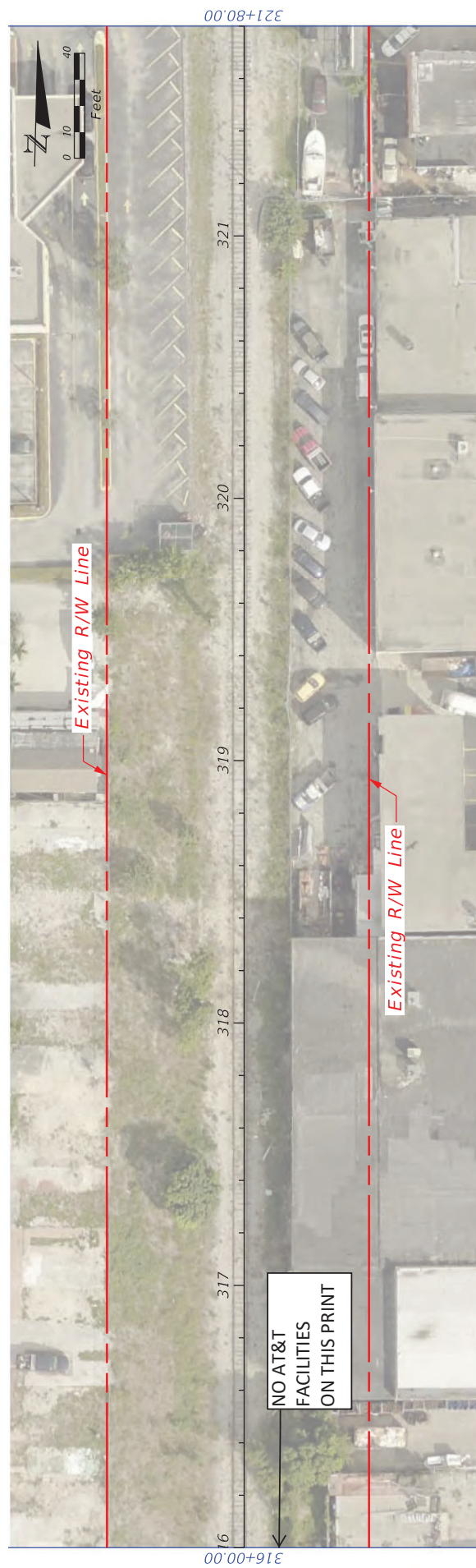
REVISIONS		DESCRIPTION	
DATE	DESCRIPTION	DATE	DESCRIPTION
<div> <div> </div> <div> <p>MIAMI-DADE COUNTY</p> </div> </div>			
<div> <div> <p>MIAMI-DADE County Parks, Recreation, and Open Spaces (MDPROS)</p> </div> <div> <p>Hickman Building 275 NW 2nd Street Miami, FL 33128 305-755-7800</p> </div> <div> <p>P&amp;R CONTRACT NO. P&amp;R PROJECT NO. P&amp;R PROJE. NO.</p> </div> </div>			
<div> <div> <p>LUDLAM TRAIL CORRIDOR P&amp;R STUDY</p> </div> <div> <p>BASE MAP</p> </div> </div>			
SHEET NO.			19



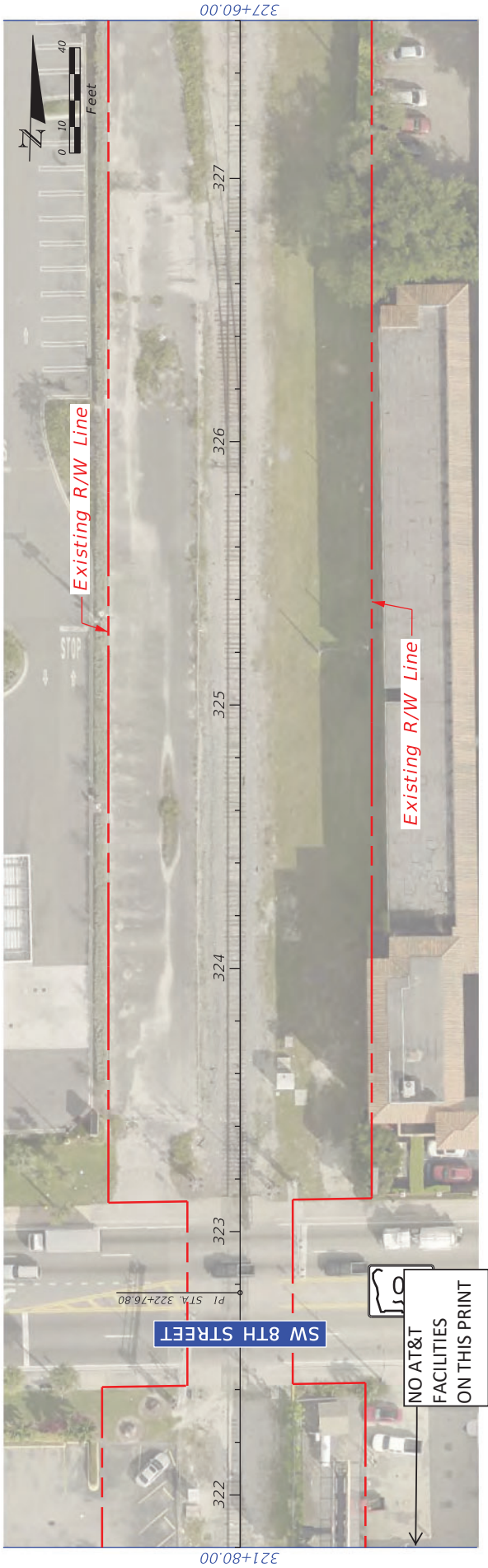


REVISIONS		 <b>MIAMI-DADE COUNTY</b>	<b>LUDLAM TRAIL CORRIDOR PD&amp;E STUDY</b>	<i>BASE MAP</i>	SHEET NO.
DATE	DESCRIPTION				
DATE	DESCRIPTION				
DATE	DESCRIPTION				
			Miami-Dade County Parks, Recreation, and Open Spaces (MDPROS)	Hickman Building 275 NW 2nd Street Miami, FL 33128 305-7557800 43502-15-001-4470619	P&R CONTRACT NO. RFQ 786B P&R PROJECT NO.



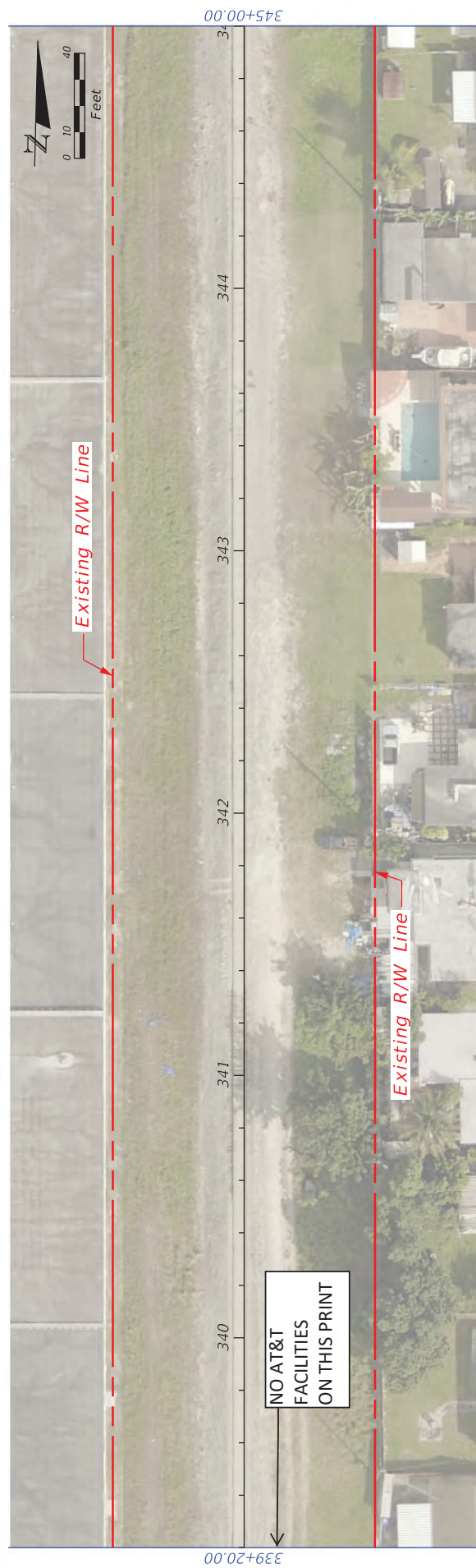
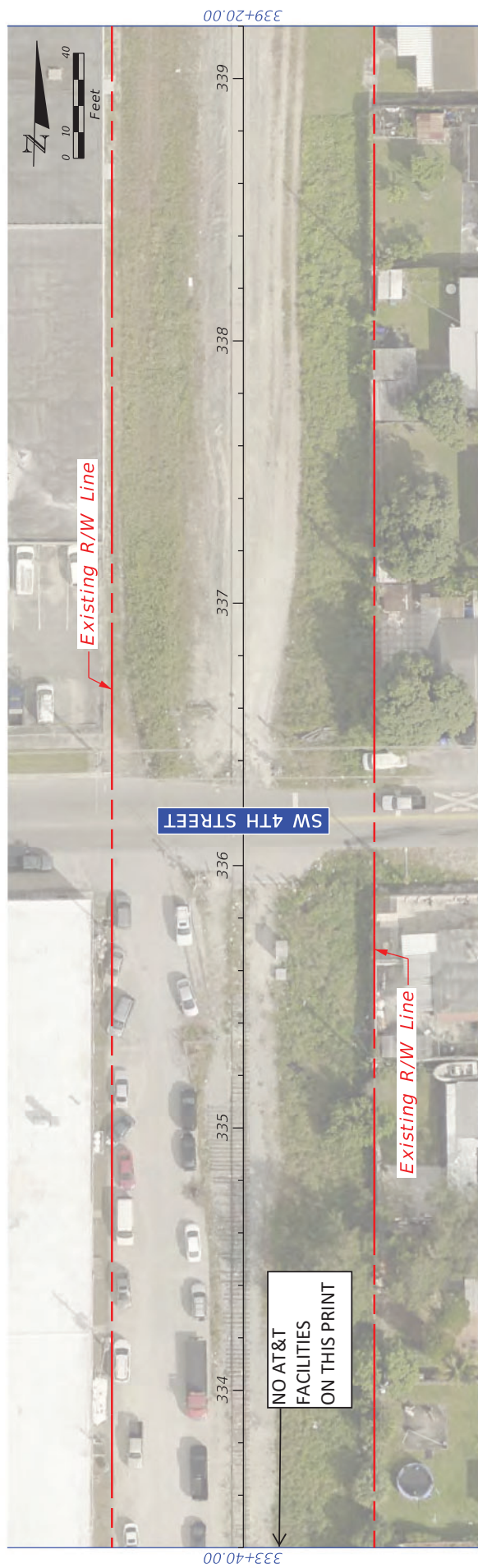
[illegible]






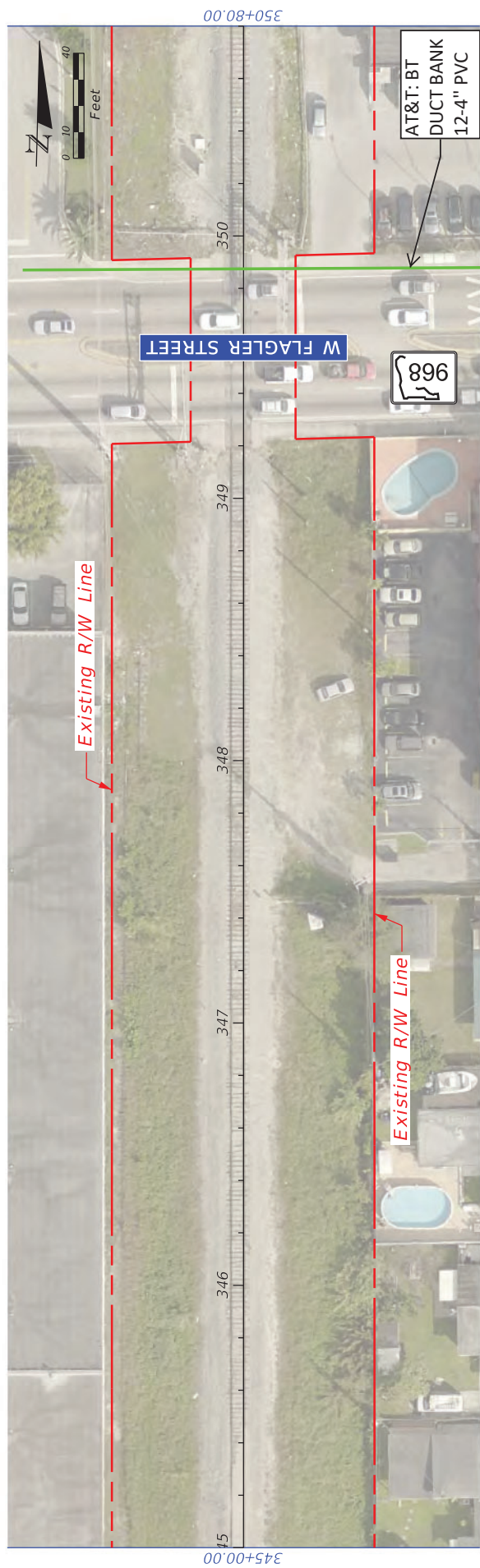
SHEET NO.		BASE MAP		LUDLAM TRAIL CORRIDOR PD&E STUDY		<div><div><div>MIAMI-DADE COUNTY</div></div><div><div><div>Miami-Dade County Parks, Recreation, and Open Spaces (MDPROG5)</div><div>Hickman Building 275 NW 2nd Street Miami, FL 33128 305-755-7800</div></div><div><div>P&amp;R CONTRACT NO. RFQ 7868</div><div>P&amp;R PROJECT NO. 43502-15-001-14470619</div></div></div></div>	
REVISIONS		DESCRIPTION					
DATE	DESCRIPTION	DATE	DESCRIPTION				



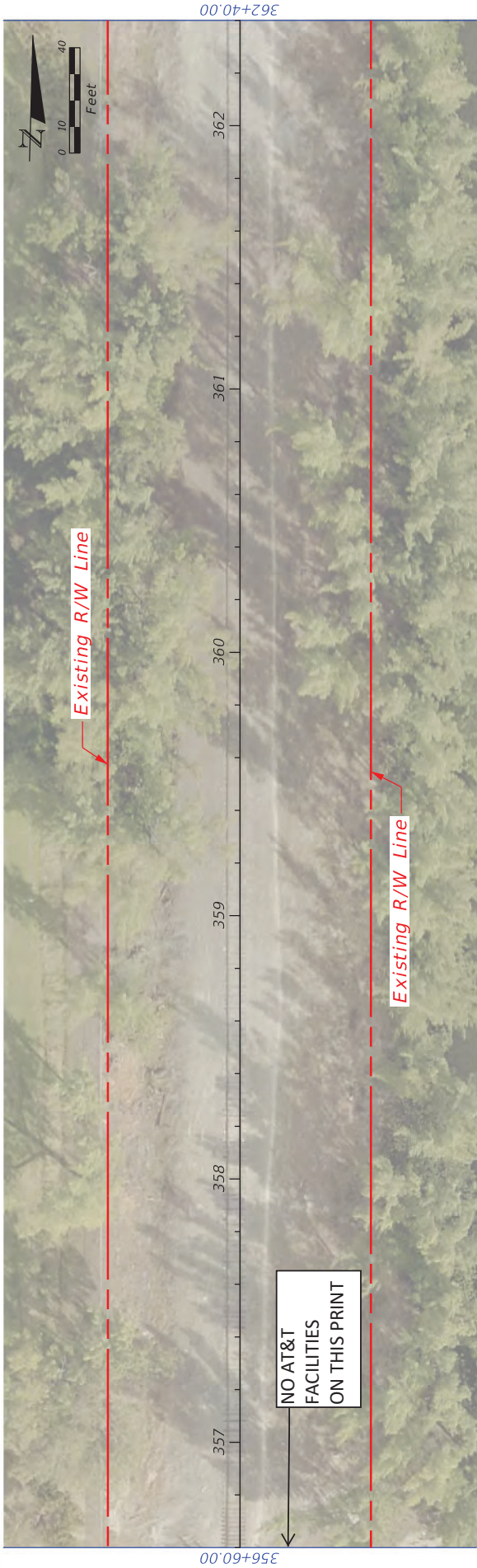


DATE		DESCRIPTION		REVISIONS		 <b>MIAMI-DADE</b> <b>COUNTY</b>		<b>LUDLAM TRAIL CORRIDOR PD&amp;E STUDY</b>		<b>BASE MAP</b>		SHEET NO.
								Miami-Dade County Parks, Recreation and Open Spaces (APPROX.)		Hickman Building 275 NW 2nd Street Miami, FL 33128 305.755.7200 J350015.001.14470610		23



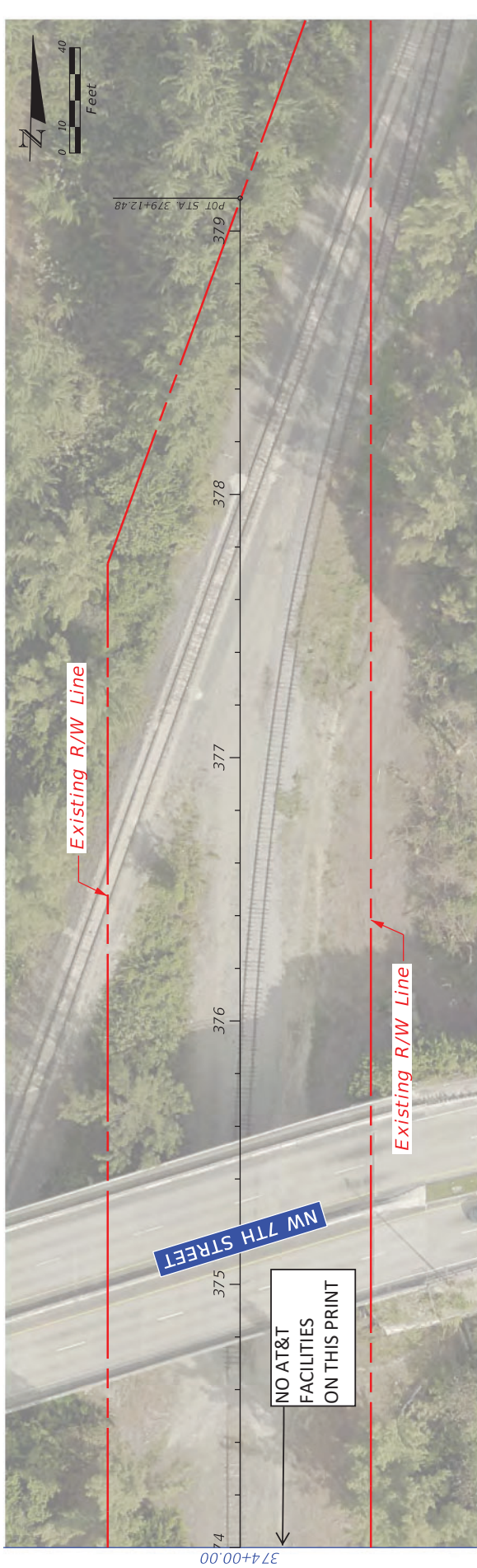
[illegible]





REVISIONS		LUDLAM TRAIL CORRIDOR P&E STUDY		BASE MAP		SHEET NO.
DATE	DESCRIPTION	DATE	DESCRIPTION	Miami-Dade County Parks, Recreation, and Open Spaces (MDROS)		
				Hickman Building 275 NW 2nd Street Miami, FL 33128 305-755-7800 4350215-001-14470619		25
				<div> <div>MIAMI-DADE COUNTY</div> </div> <div> <div>P&amp;E CONTRACT NO.</div> <div>4350215-001-14470619</div> </div> <div> <div>P&amp;E PROJECT NO.</div> <div>4350215-001-14470619</div> </div>		





REVISIONS		LUDLAM TRAIL CORRIDOR PD&E STUDY		BASE MAP		SHEET NO.
DATE	DESCRIPTION	DATE	DESCRIPTION	Miami-Dade County Parks, Recreation, and Open Spaces (MDROS)	Hickman Building 275 NW 2nd Street Miami, FL 33128 305/755-7800	
				P&E CONTRACT NO. 4350215-001-14470619	P&E PROJECT NO. 4350215-001-14470619	26