

Appendix C – Mark Ups from:

AT&T FL

AT&T Corp

Atlantic Broadband

CenturyLink Level 3 (Lumen)

Comcast

Crown Castle

Fiberlight (Atlantic Broadband)

Florida City Gas

Florida Gas Transmission

FPL Distribution

FPL Transmission

Hotwire

MCI/Verizon

Miami-Dade County Public Schools

Miami-Dade DTPW

Miami-Dade ITD

Miami-Dade Traffic Signals Dept

Miami-Dade WASD

NW 7th St overpass overview

for your map.



Legend

sweep from dual TO
MH to northern ROW
between 4-5' DOC

dual TCA MH

4' DOC

13' DOC



500 ft

Appendix C – Mark Ups from:

AT&T FL

AT&T Corp

Atlantic Broadband

CenturyLink Level 3 (Lumen)

Comcast

Crown Castle

Fiberlight (Atlantic Broadband)

Florida City Gas

Florida Gas Transmission

FPL Distribution

FPL Transmission

Hotwire

MCI/Verizon

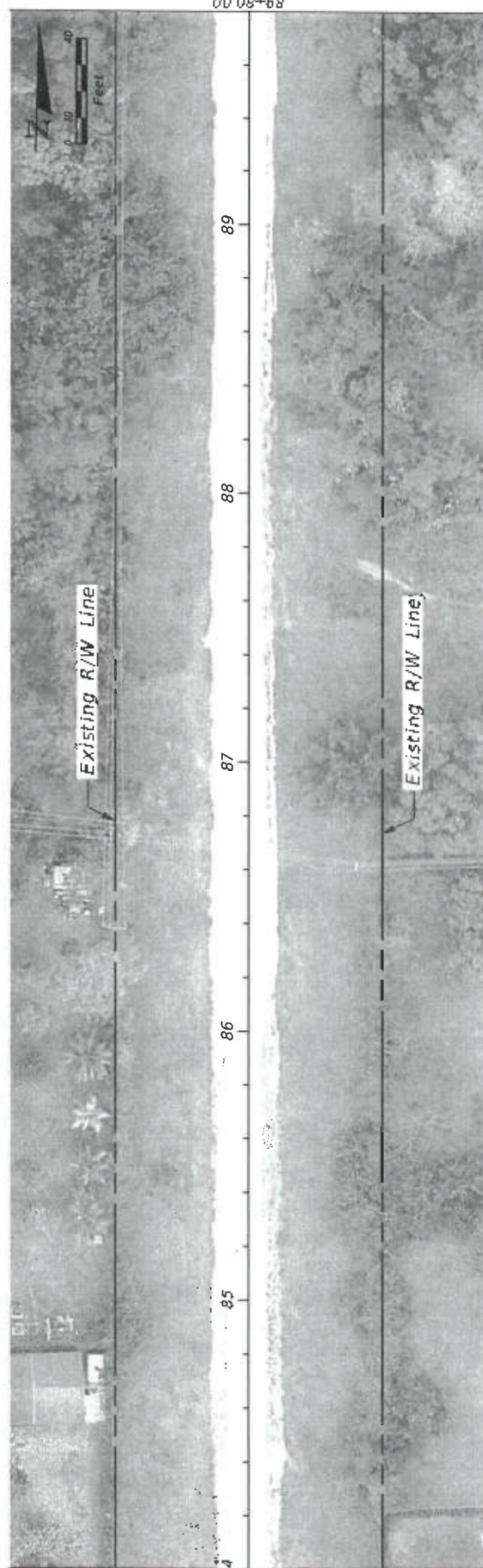
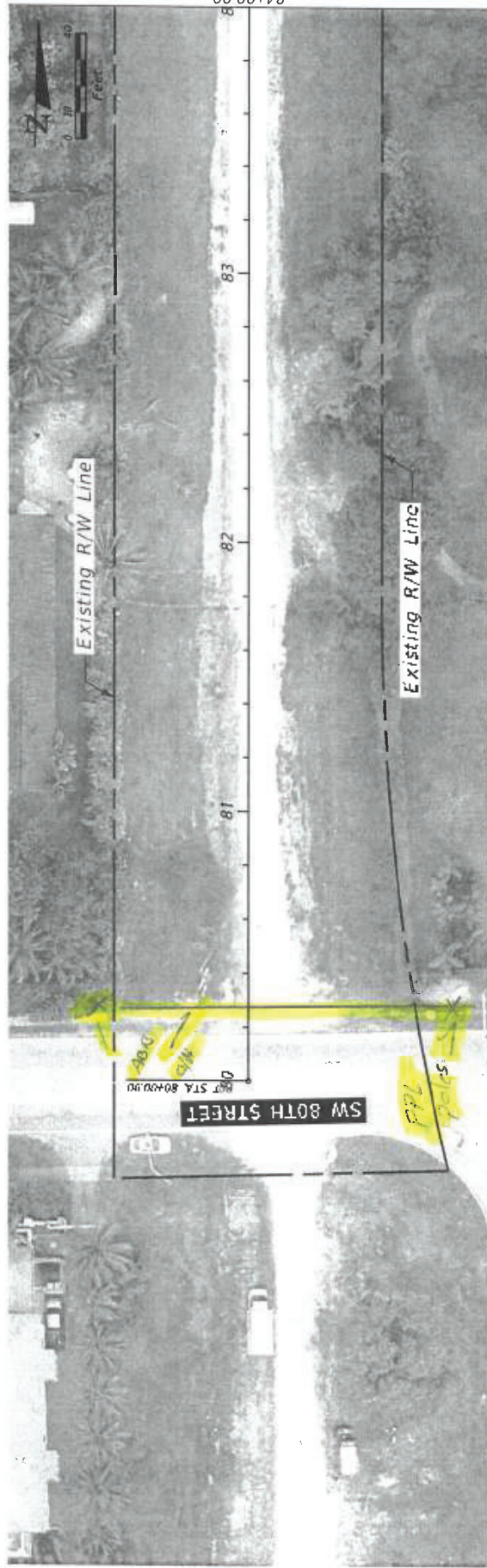
Miami-Dade County Public Schools

Miami-Dade DTPW

Miami-Dade ITD

Miami-Dade Traffic Signals Dept

Miami-Dade WASD



DATE	DESCRIPTION	REVISIONS	DATE	DESCRIPTION

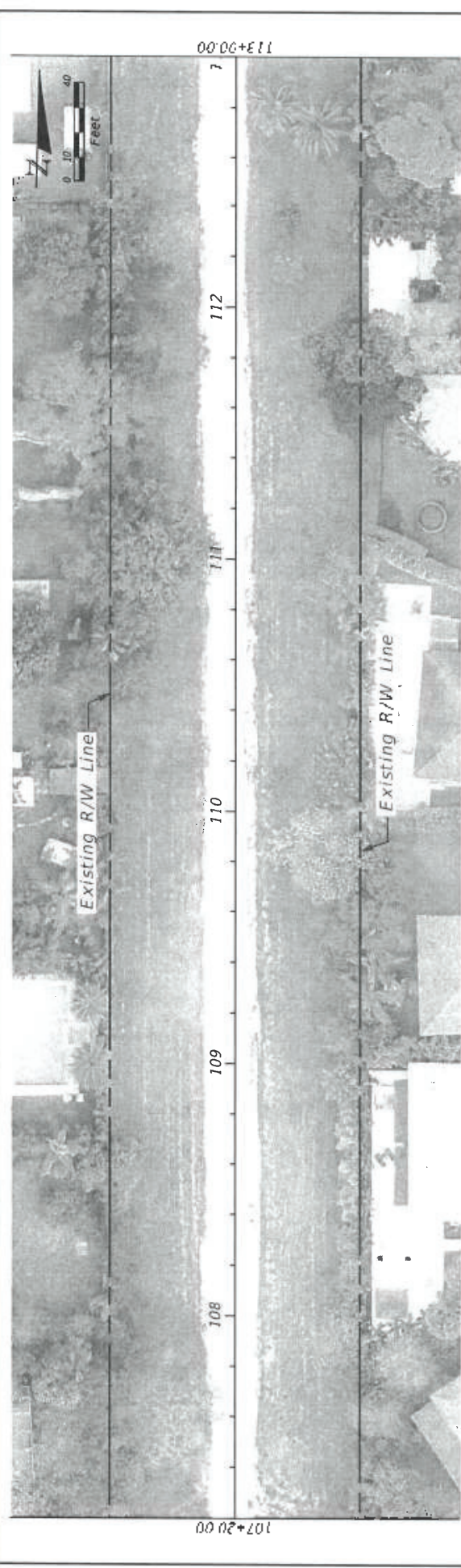
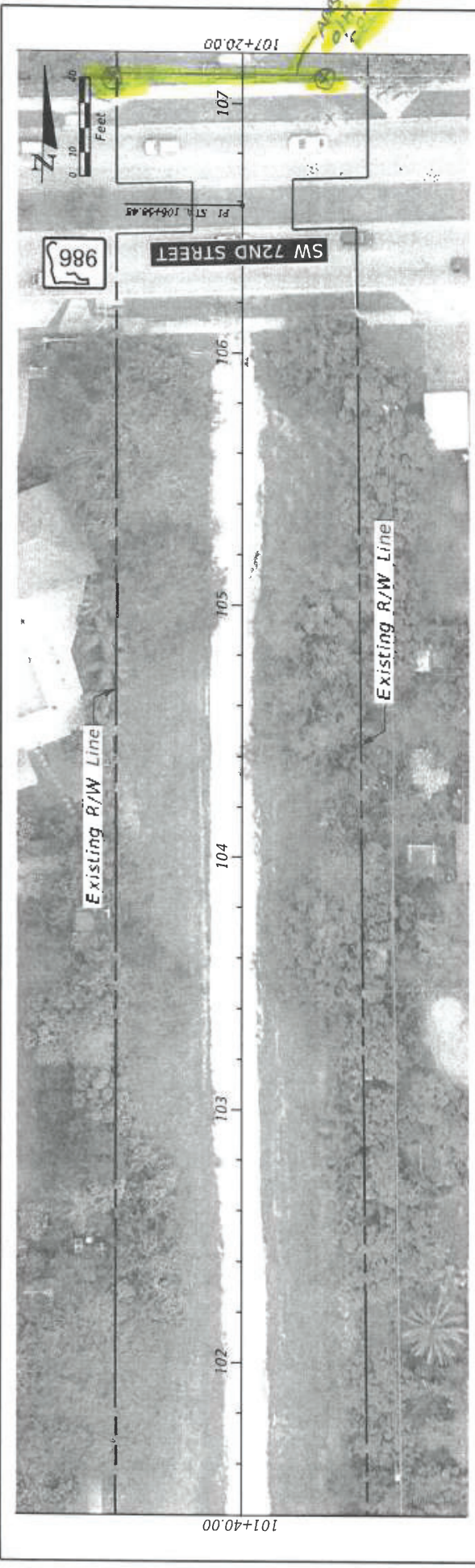


MIAMI-DADE COUNTY
 Planning and
 Development
 275 NW 2nd Street
 Miami, FL 33128
 305-259-7800
 305-259-7800

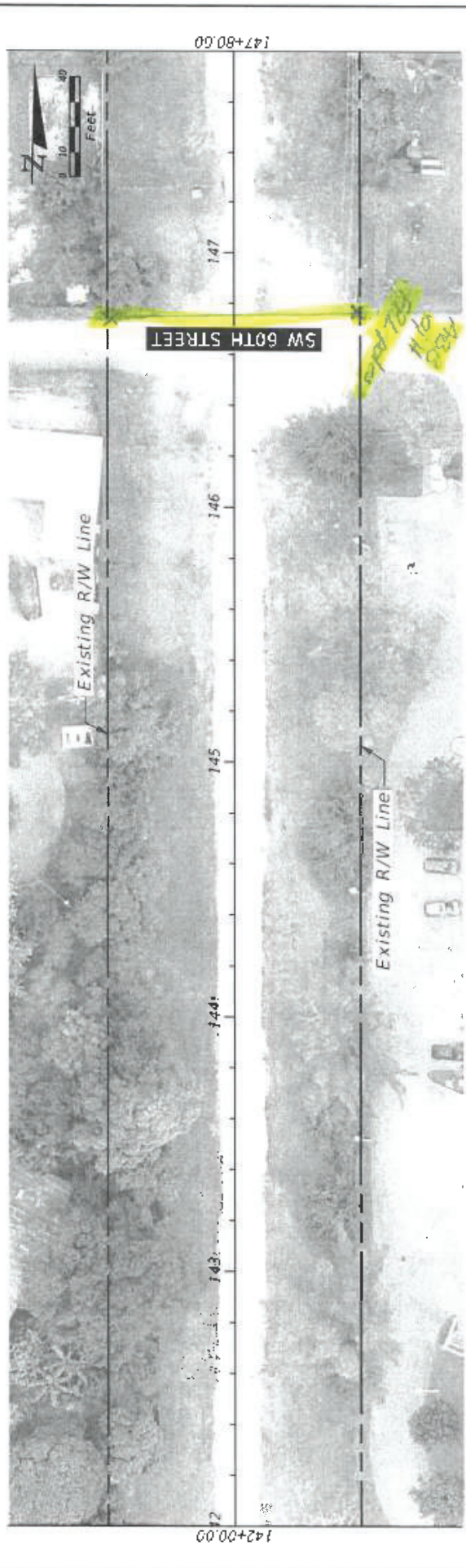
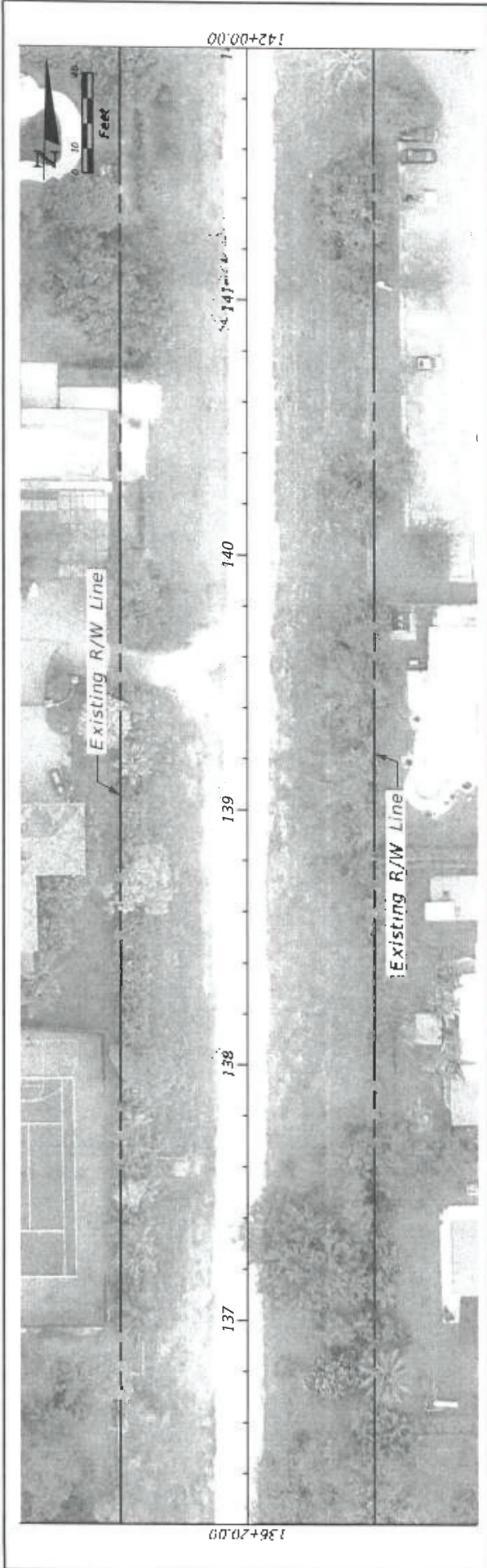
LEWIS TRAIL CORRIDOR R/W STUDY

BASE MAP


SHEET NO. 01



REVISIONS		DESCRIPTION		DATE	
DATE		DESCRIPTION		DATE	
<div> <div> <div>MIAMI-DADE COUNTY</div> <div> <div>LEULAN TRAIL (VANDER PINE STUDY)</div> <div> <div> <div>MIAMI-DADE COUNTY</div> <div>Publics, Acquisition, and Open Spaces (INPROGRESS)</div> </div> <div> <div>215 NW 2nd St. and NW 1st St. 33128</div> <div>BOY-711-7800</div> </div> </div> <div> <div>PLAT CONTRACT NO.</div> <div>BO-788</div> </div> <div> <div>PLAT PROJECT NO.</div> <div>45502-J6-0011447089</div> </div> </div> </div> </div>					
BASE MAP				SHEET NO.	03



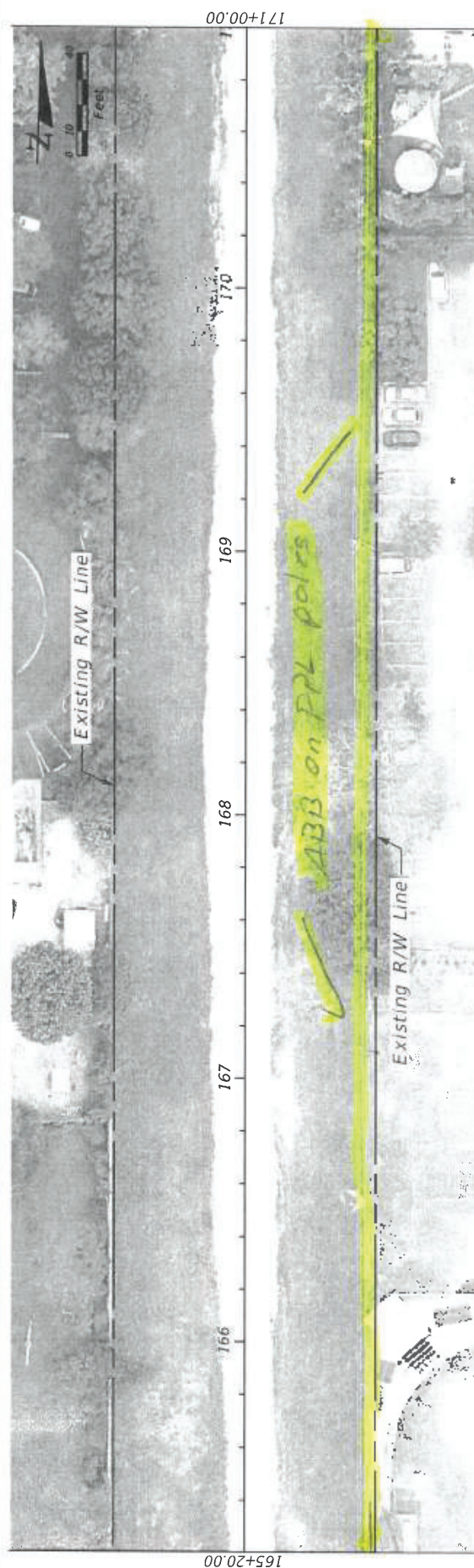
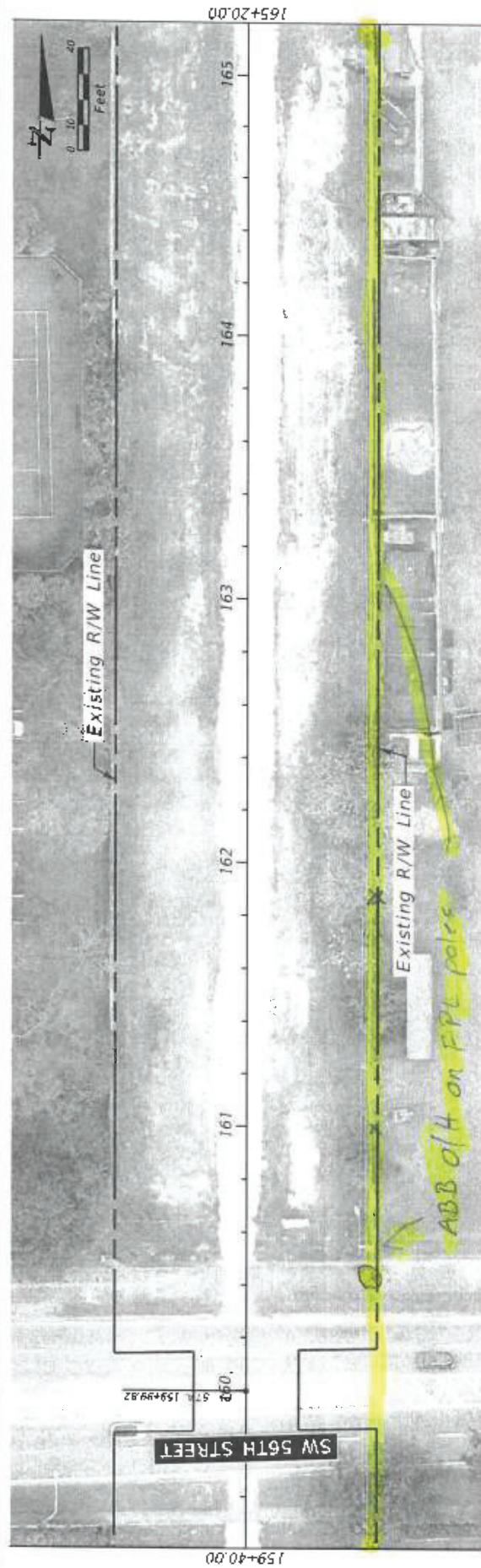
REVISIONS		DESCRIPTION	
DATE	DESCRIPTION	DATE	DESCRIPTION



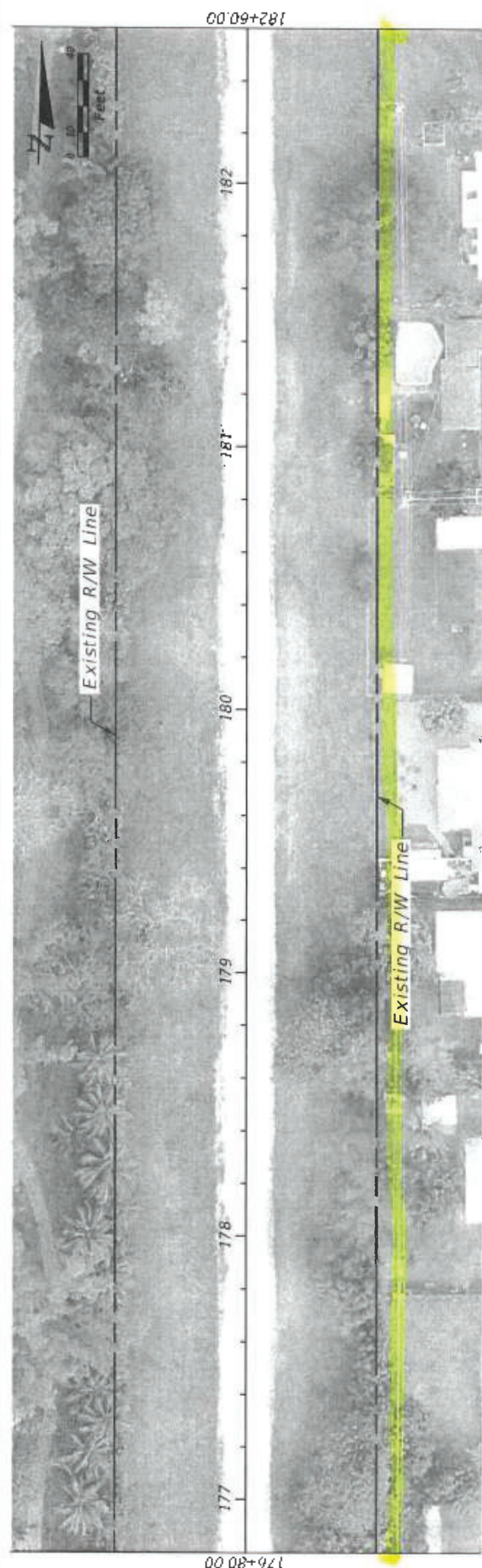
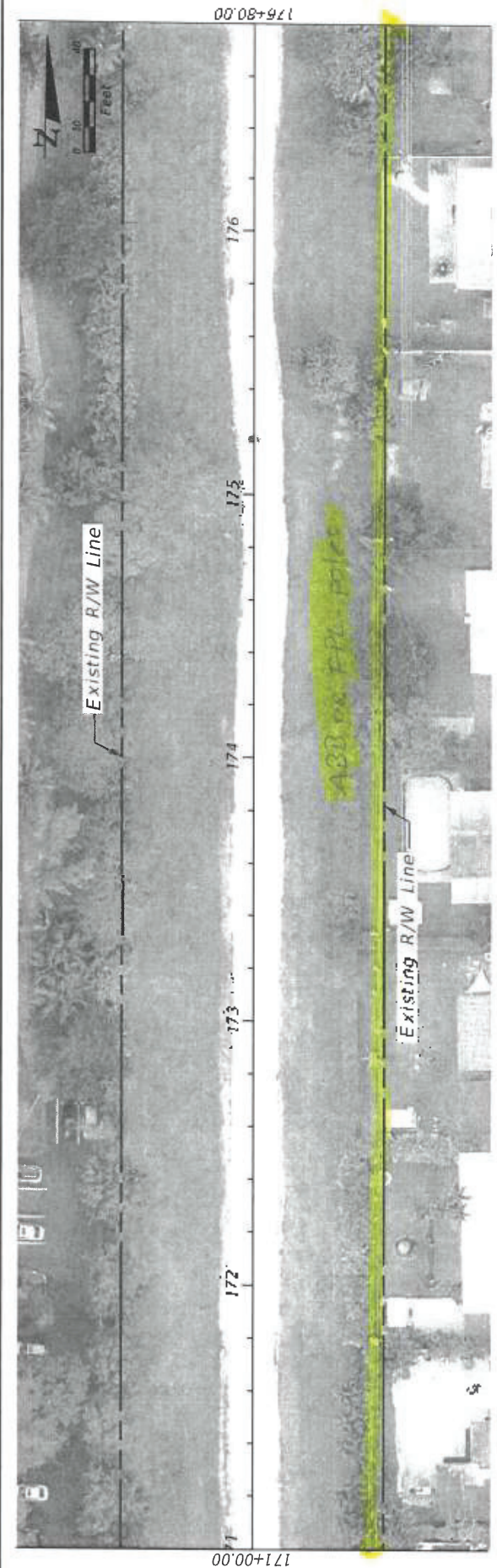
**MIAMI-DADE
COUNTY**


LETTERMAN TRAIL CURVE ROAD 8710Y

<p>Letterman Trail Curve Road 8710Y</p> <p>215 NW 2nd Street</p> <p>Miami, FL 33128</p> <p>305-255-7800</p>	<p>PLAN CONTRACT NO.</p> <p>43502-15-001-2470679</p>
---	--

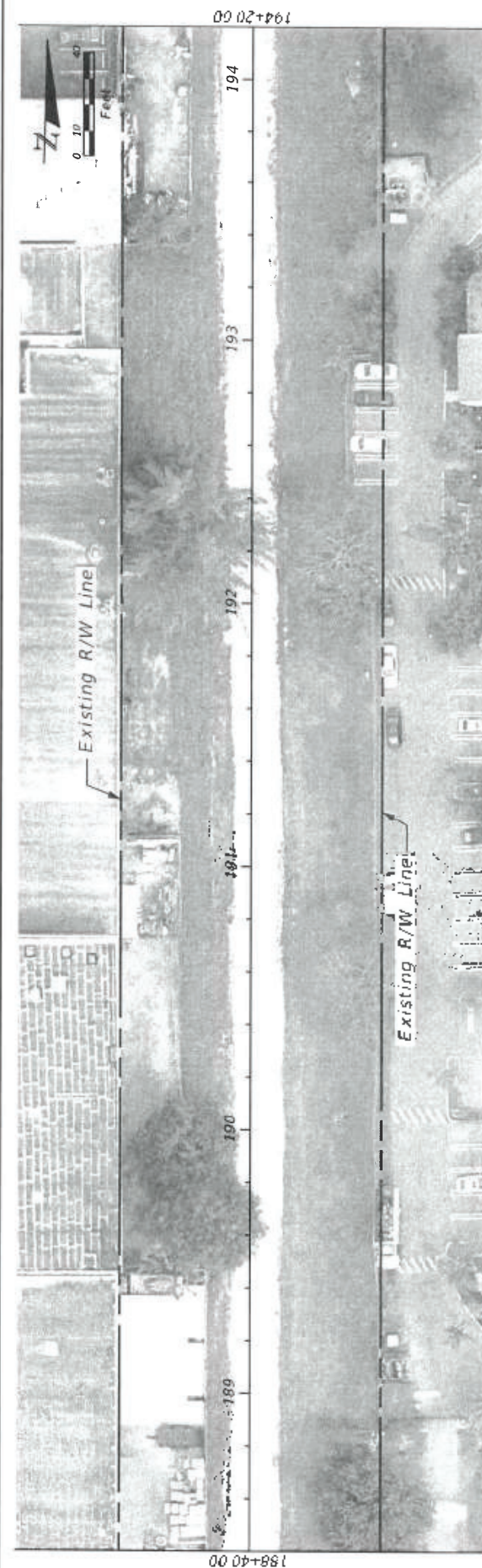
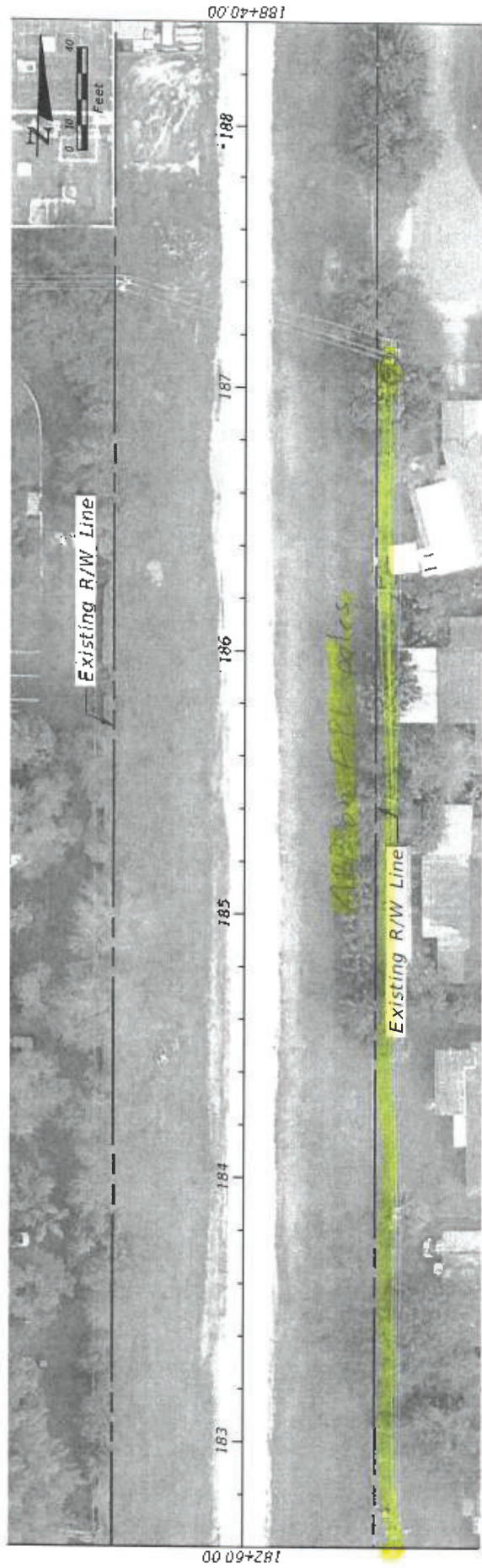


REVISIONS		DESCRIPTION		DATE	
DATE	DESCRIPTION	DATE	DESCRIPTION	DATE	DESCRIPTION
					
LITTLEWATER TRAIL CORRIDOR PDR STUDY					
MIAMI-DADE COUNTY Parks, Recreation, and Urban Spaces (MOPROSI)			HICKMAN Building 215 NW 2nd Street MIAMI, FL 33128 305.755.7800		
HICKMAN Building 215 NW 2nd Street MIAMI, FL 33128 305.755.7800			PER CONTRACT NO. PER PROJECT NO. 43597-15-001-14470619		
BASE MAP					
				SHEET NO.	08



REVISIONS		DESCRIPTION		DATE	
DATE		DESCRIPTION		DATE	
<div><div><div><div><div><div>MIAMI-DADE</div><div>COUNTY</div></div></div><div><div><div>LITTLE TRAIL CORRIDOR PDNE STUDY</div><div><div>Miami-Dade County</div><div>Public, Recreation and Open Spaces IMPROVEMENTS</div></div></div><div><div><div>Wickham Building</div><div>213 NW 2nd Street</div><div>Miami, FL 33128</div><div>705.755.7800</div></div><div><div>RWA CONTRACT NO.</div><div>RFO 7686</div></div><div><div>PSR PROJECT NO.</div><div>43502-15-00-1807019</div></div></div></div></div></div></div>					
LITTLE TRAIL CORRIDOR PDNE STUDY				BASE MAP	
SHEET NO				09	

BASE MAP



REVISIONS		PROJECT INFORMATION		SHEET NO.
DATE	DESCRIPTION	DATE	DESCRIPTION	
				10

MIAMI-DADE COUNTY

LITTLE TRAIL CORRIDOR PLANE STUDY

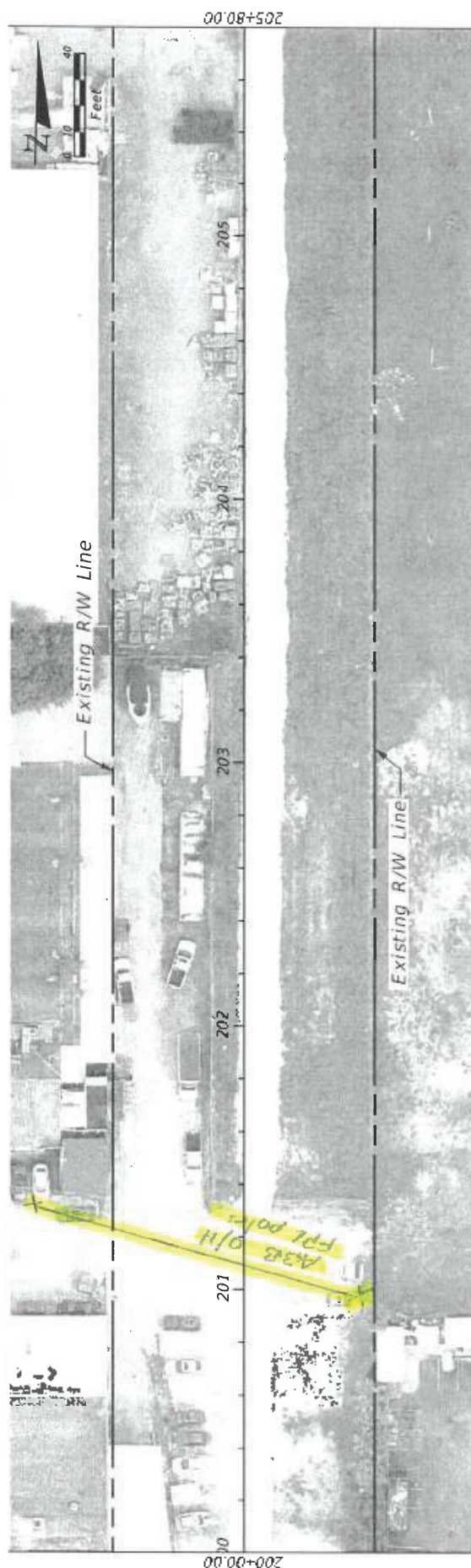
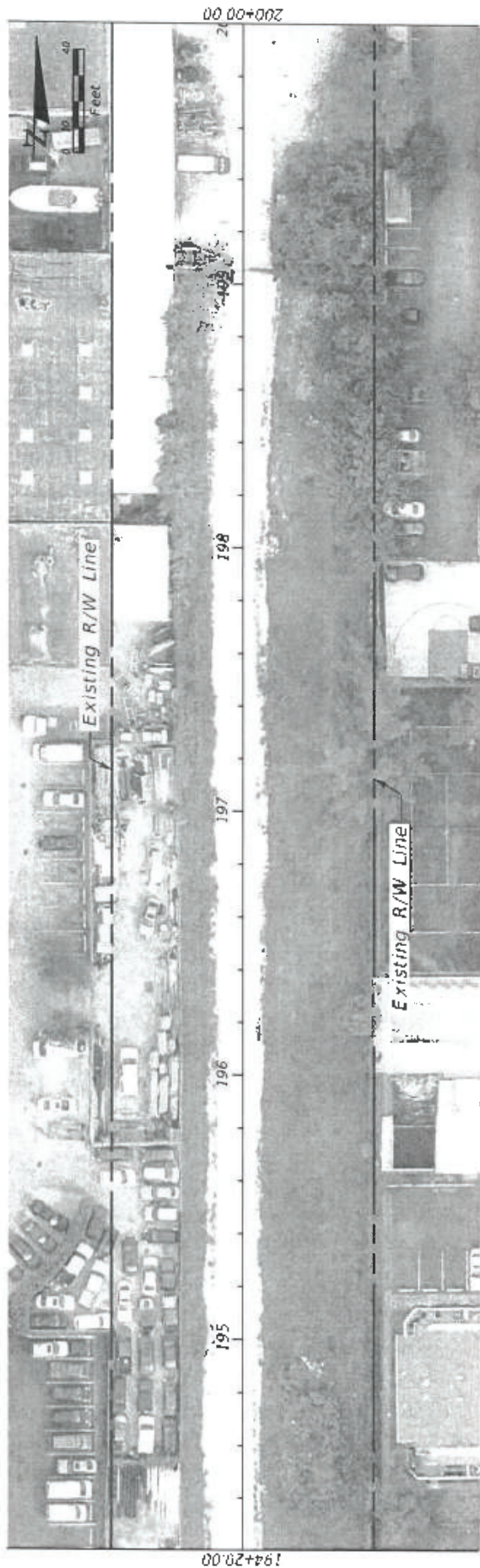
Miami-Dade County
Public Works, Engineering, and
Other Services
(MORRIS)

175 NW 2nd Street
Miami, FL 33108
305.255-7800

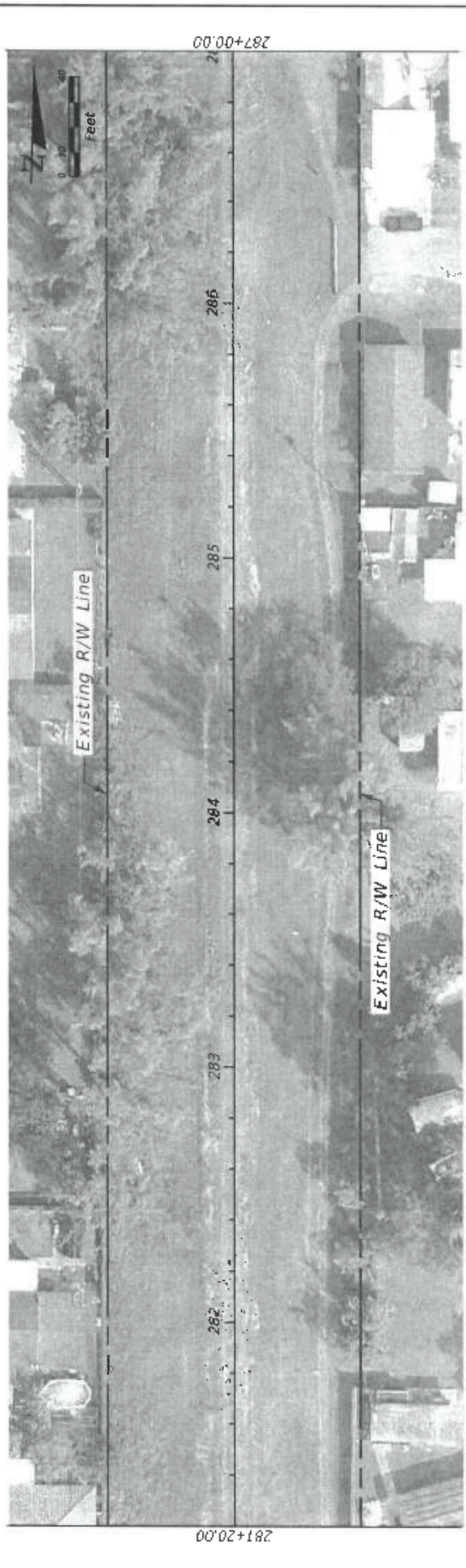
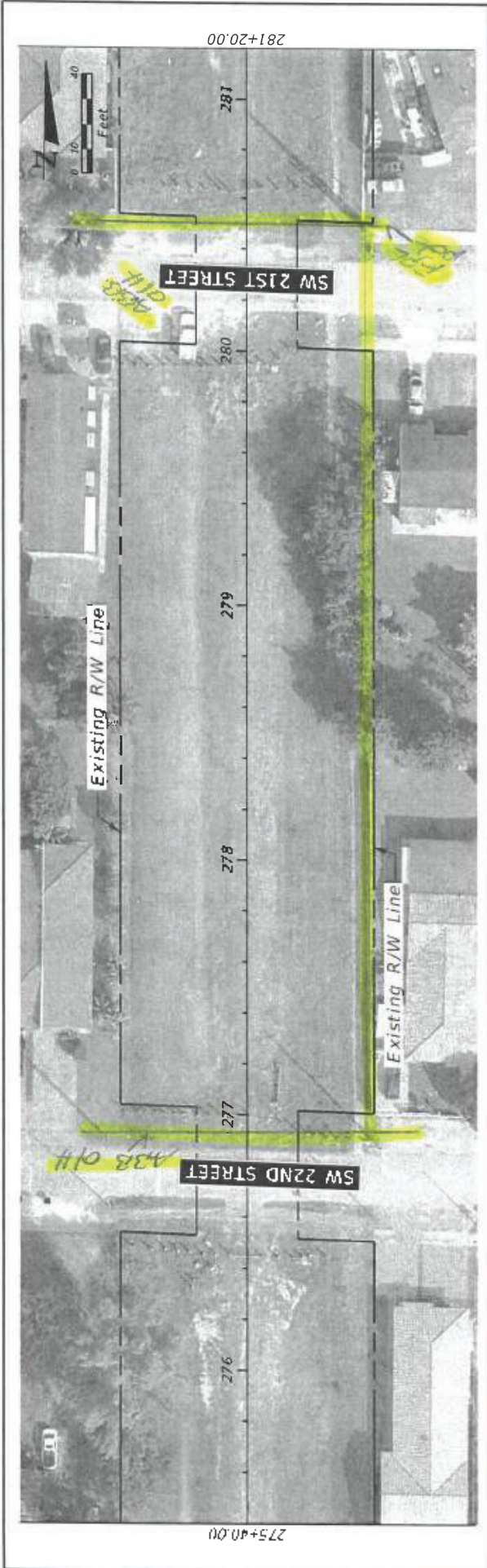
BASE MAP

PLAN CONTRACT NO.
P62-2004

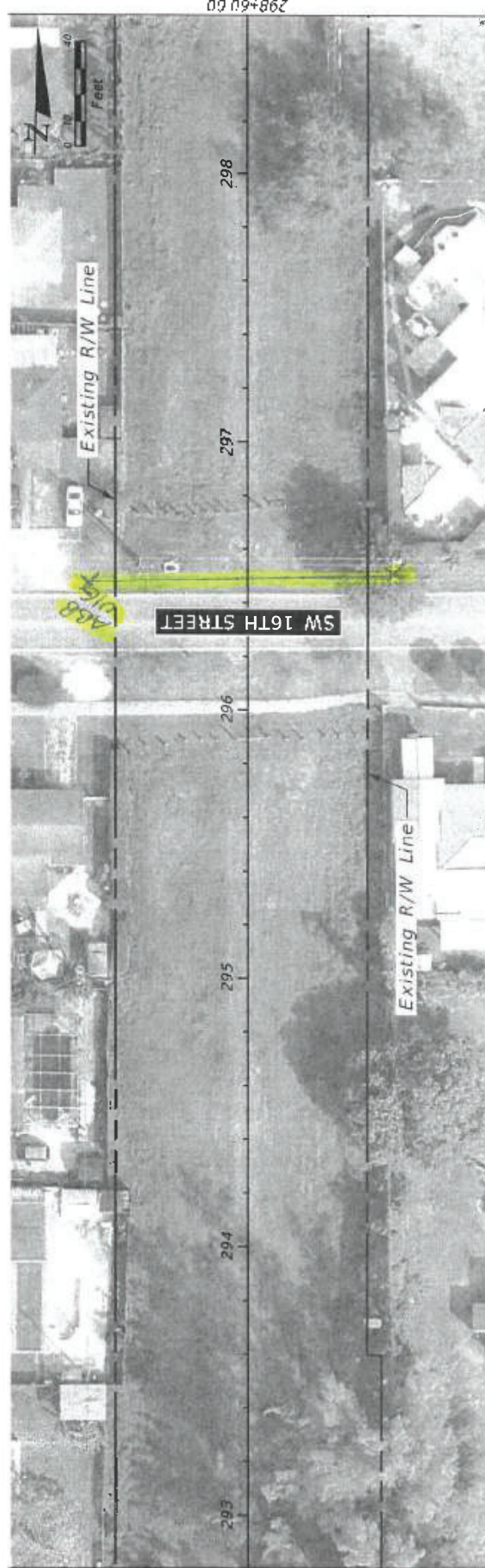
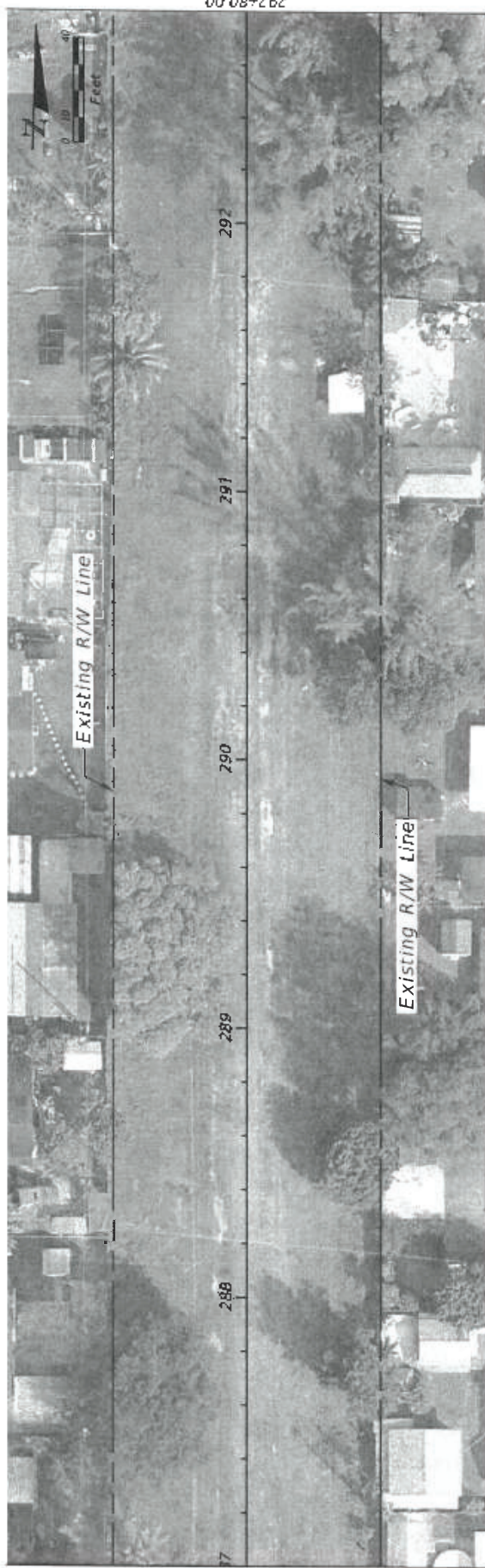
PLAN PROJECT NO.
15017-13-001-144/145/146/147



DATE		REVISIONS		DESCRIPTION	
DATE		REVISIONS	DATE	DESCRIPTION	
 MIAMI-DADE COUNTY					
LITTLE TRAIL CORRIDOR PIKE STUDY			BASE MAP		
MIAMI-DADE COUNTY PLANS DIVISION PLANS SECTION PLANS UNIT			FOR CONTRACT NO. 272 4th Street MIAMI, FL 33128 PSR PROJECT NO. 43102-25001F070819 305.755.7800 (MIDPROJ)		
SHEET NO.			11		



REVISIONS		DESCRIPTION		DATE	
DATE		DESCRIPTION		DATE	
<div> <div> </div> <div> <p>MIAMI-DADE COUNTY</p> </div> </div>					
<div> <div> <p>LITTLEWATER TRAIL CORRIDOR PD&E STUDY</p> </div> <div> <p>MIAMI-DADE COUNTY Public Works, Planning and Development 3015 NW 12th Ave Miami, FL 33135 (305) 375-7200</p> </div> </div>					
<div> <div> <p>MIAMI-DADE COUNTY Public Works, Planning and Development 3015 NW 12th Ave Miami, FL 33135 (305) 375-7200</p> </div> <div> <p>PER CONTRACT NO. 850 7468 PER PROJECT NO. 42102-15-000-JAN0619</p> </div> </div>					
BASE MAP				SHEET NO.	18

[illegible]

MIAMI-DADE COUNTY		LUDAK TRAIL CORRIDOR PIKE STUDY
Miami-Dade County Public Acquisition and Open Space Department	Hickman Building 275 NW 2nd Street Miami, FL 33128 305.763.2400 mso@mda.fl.gov	P&R CONTRACT NO. RFQ T&B P&R PROJECT NO. 475072-F-0003-1447-MDB

BASE MAP

SHFF7

61

Appendix C – Mark Ups from:

AT&T FL

AT&T Corp

Atlantic Broadband

CenturyLink Level 3 (Lumen)

Comcast

Crown Castle

Fiberlight (Atlantic Broadband)

Florida City Gas

Florida Gas Transmission

FPL Distribution

FPL Transmission

Hotwire

MCI/Verizon

Miami-Dade County Public Schools

Miami-Dade DTPW

Miami-Dade ITD

Miami-Dade Traffic Signals Dept

Miami-Dade WASD

From: [Rypkema, Xan](#)
To: [Mairena, David](#)
Subject: NO Facilities 403502-15-001-14470619, Ludlam Corridor,
Date: Tuesday, June 11, 2019 7:01:39 PM
Attachments: [image001.png](#)
[map 4.pdf](#)
[map 5.pdf](#)
[map 1.pdf](#)
[map 2.pdf](#)
[map 3.pdf](#)

No facilities:

CenturyLink Communications, LLC (National Fiber Optic longhaul/metro network) has received your utility notice. After reviewing the information you provided it has been determined that CenturyLink does not have facilities within the scope of the Project. Therefore it will not be necessary for CenturyLink to relocate or adjust the facilities.

Any changes or additions to the Project plans or parameters should be submitted to CenturyLink for review of potential new impacts to the CenturyLink facilities. Please reference the file number **157626 FL** with any future communications.

Please make certain that you coordinate with your local Call Before You Dig program to identify any other utilities in the area of your project.

Thank you,

Xan Marie Rypkema

Business Analyst

Relocations Department

CenturyLink

1025 Eldorado Blvd

Broomfield CO 80021

p: 720.888.1089

e: xan.rypkema@centurylink.com



NationalRelo@centurylink.com

**Please send all future utility requests via e-mail to NationalRelo@centurylink.com with a detailed letter stating the project information and any existing plans. Electronic copies (opposed to physical copies) ensure efficient and accelerated communication between both parties. If there are outstanding circumstances in which this request cannot be met, please advise us of such. We appreciate you*

This communication is the property of CenturyLink and may contain confidential or privileged information. Unauthorized use of this communication is strictly prohibited and may be unlawful. If you have received this communication in error, please immediately notify the sender by reply e-mail and destroy all copies of the communication and any attachments.

Appendix C – Mark Ups from:

AT&T FL

AT&T Corp

Atlantic Broadband

CenturyLink Level 3 (Lumen)

Comcast

Crown Castle

Fiberlight (Atlantic Broadband)

Florida City Gas

Florida Gas Transmission

FPL Distribution

FPL Transmission

Hotwire

MCI/Verizon

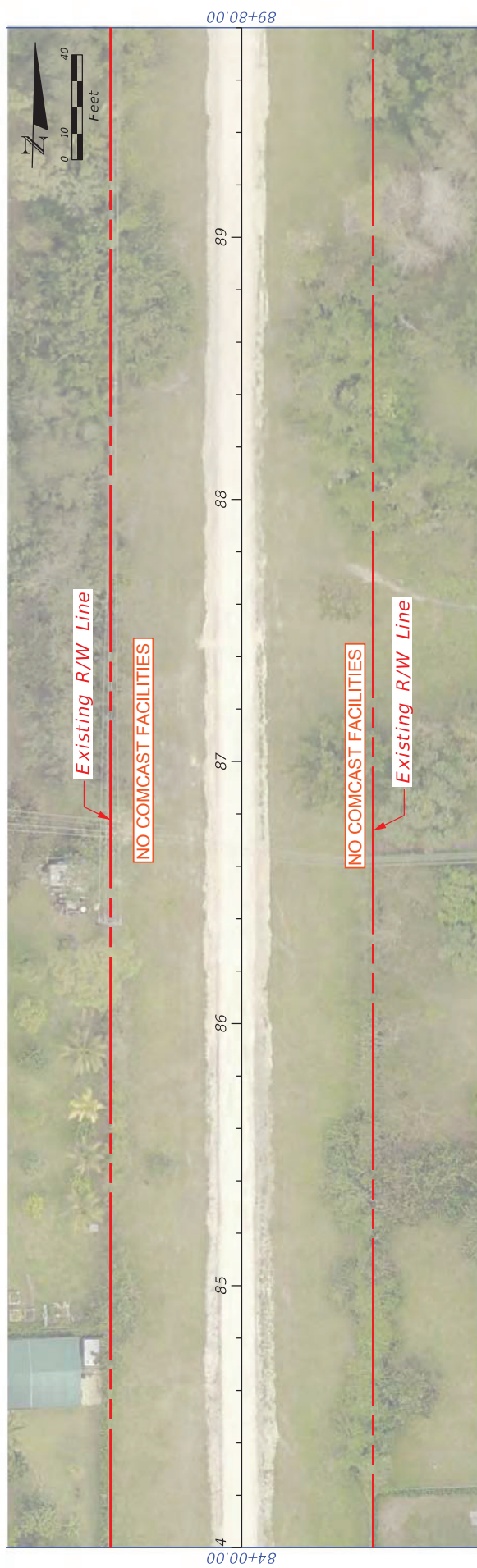
Miami-Dade County Public Schools

Miami-Dade DTPW

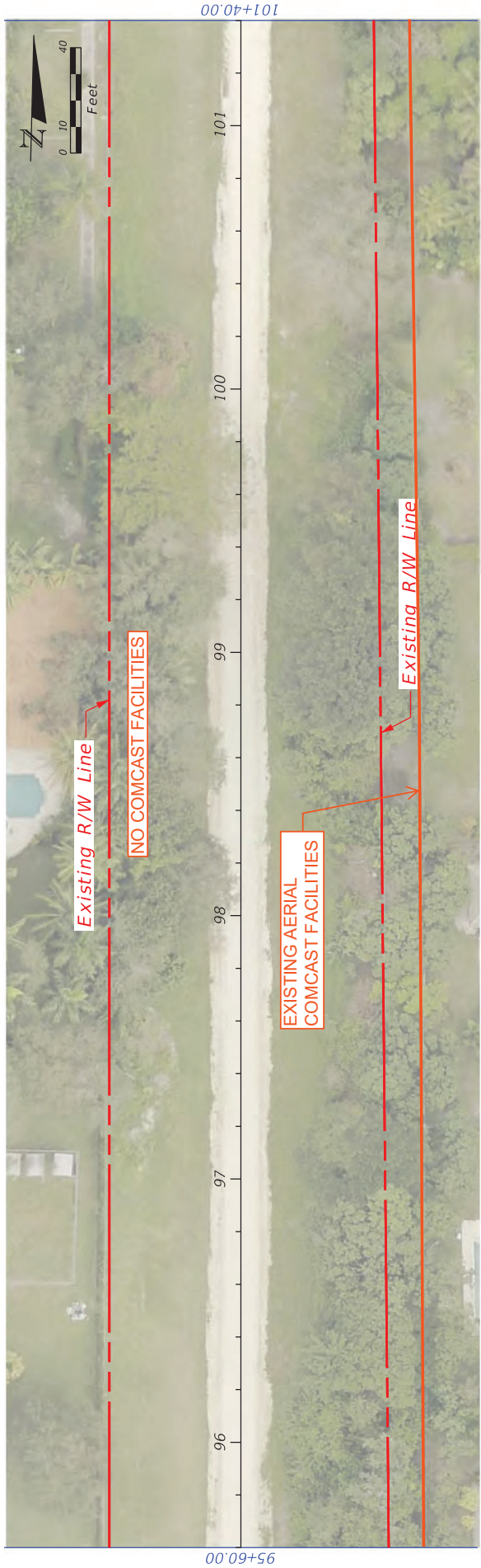
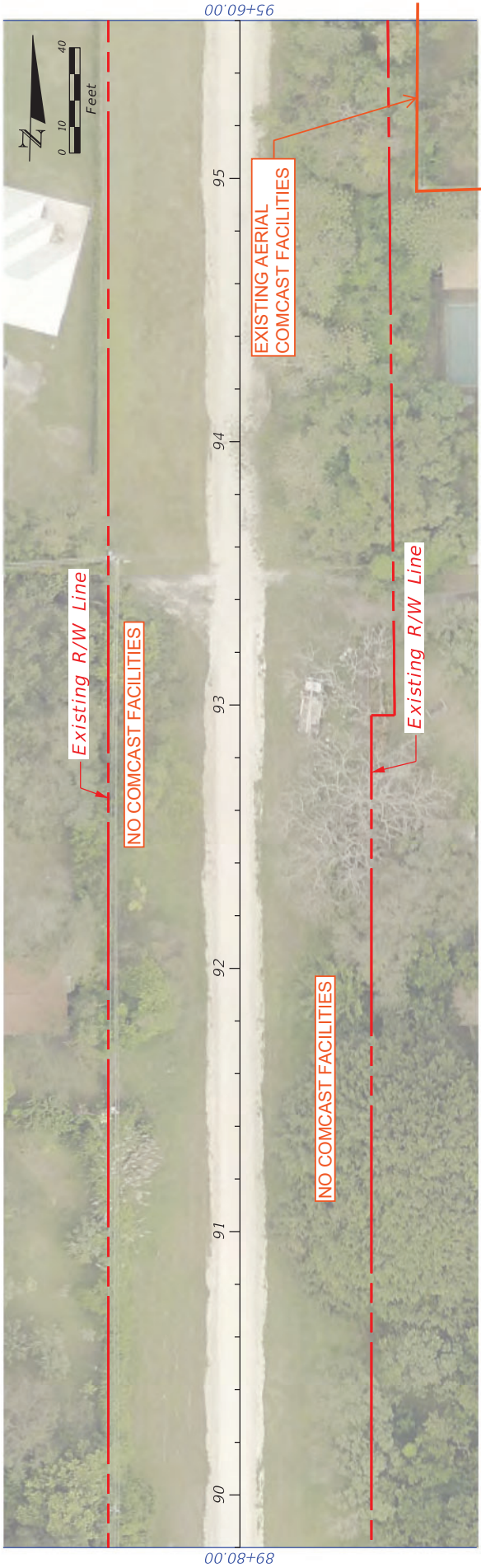
Miami-Dade ITD

Miami-Dade Traffic Signals Dept

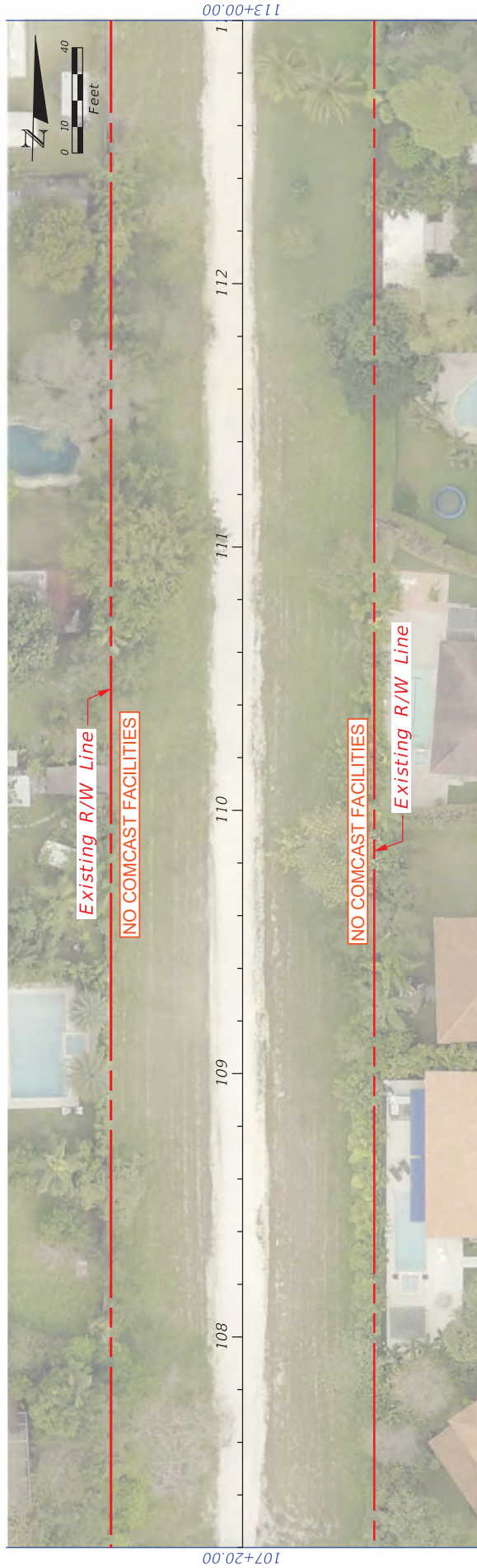
Miami-Dade WASD



DATE		DESCRIPTION		REVISIONS			MIAMI-DADE COUNTY	LUDLAM TRAIL CORRIDOR PD&E STUDY	BASE MAP	SHEET NO. 01
DATE		DESCRIPTION		DATE						



			<div><div><div><div><div><div></div><div>MIAMI-DADE COUNTY</div></div></div><div><div><div></div><div></div><div></div></div></div></div></div><div>LUDLAM TRAIL CORRIDOR PD&E STUDY</div></div>			<div><div><div><div><div>Miami-Dade County Parks, Recreation, and Open Spaces (MDPROS)</div><div>Hickman Building 275 NW 2nd Street Miami, FL 33128 305-755-7800</div></div></div><div><div><div>P&R CONTRACT NO. RFQ 7868</div><div>P&R PROJECT NO. 4350215-001-14470619</div></div></div></div></div>			<div>BASE MAP</div>			SHEET NO.	02



REVISIONS		DESCRIPTION	
DATE	DESCRIPTION	DATE	DESCRIPTION
<div> <div> </div> <div> <p>MIAMI-DADE COUNTY</p> </div> </div>			
<div> <div> <p>MIAMI-DADE County Parks, Recreation, and Open Spaces (MDPROS)</p> </div> <div> <p>Hickman Building 275 NW 2nd Street Miami, FL 33128 305/355-7800</p> </div> <div> <p>PS&R CONTRACT NO. 4350215-001-14470619</p> </div> </div>			
<div> <div> <p>LUDLAM TRAIL CORRIDOR PD&E STUDY</p> </div> <div> <p>BASE MAP</p> </div> </div>			
SHEET NO.			03



REVISIONS		LUDLAM TRAIL CORRIDOR PD&E STUDY		BASE MAP		SHEET NO.
DATE	DESCRIPTION	DATE	DESCRIPTION	Miami-Dade County Parks, Recreation, and Open Spaces (MDPROS)	Hickman Building 275 NW 2nd Street Miami, FL 33128 305-755-7800	
				MIAMI-DADE COUNTY	<div> <div> P&E CONTRACT NO. 43502-15-001-14470619 </div> <div> P&E PROJECT NO. 43502-15-001-14470619 </div> </div>	04



DATE	DESCRIPTION	REVISIONS	DATE	DESCRIPTION



Miami-Dade County
 Parks, Recreation, and
 Open Spaces
 (MDPROS)

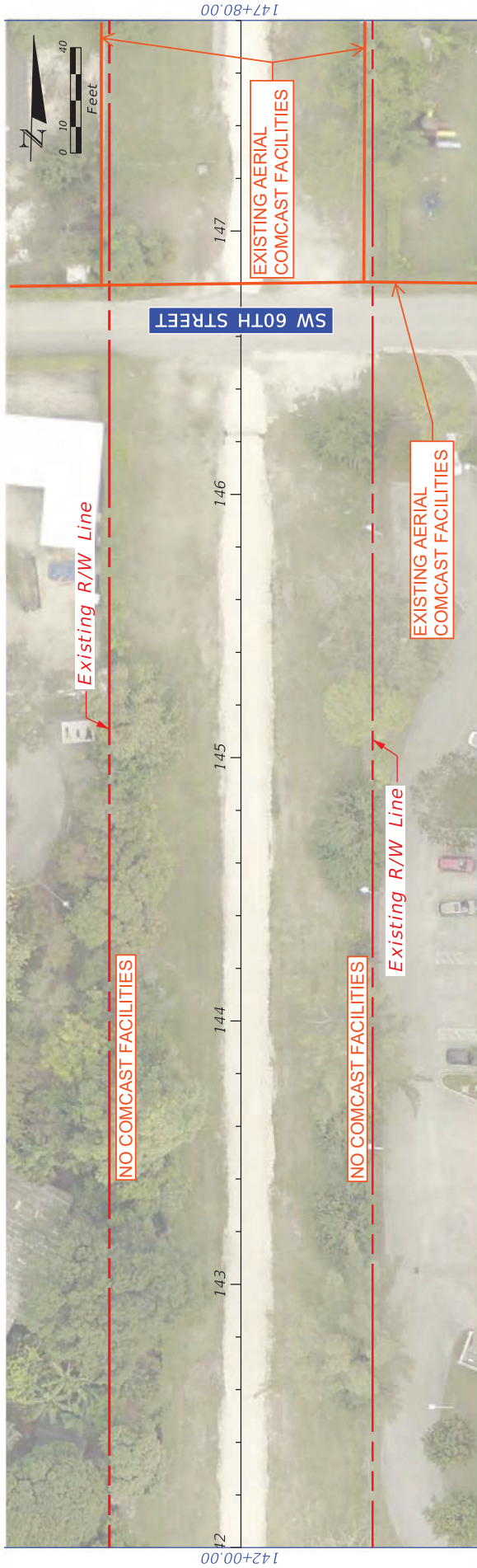
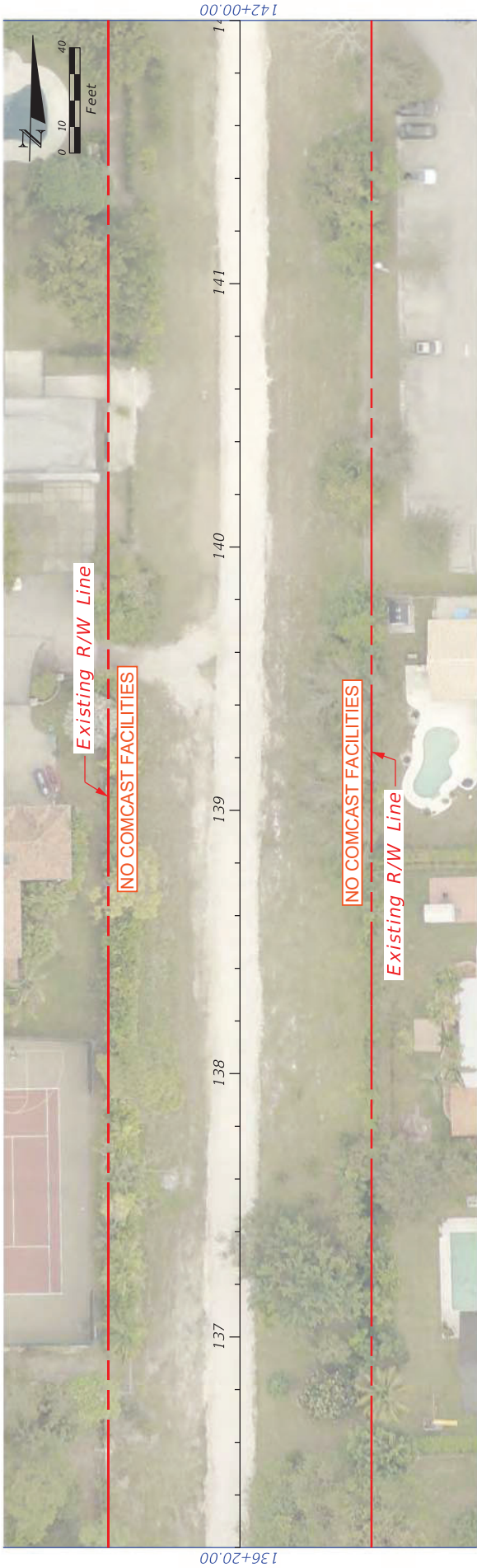
Hickman Building
 275 NW 2nd Street
 Miami, FL 33128
 305-755-7800

P&R CONTRACT NO.
 4350215-001-14470619
 P&R PROJECT NO.
 4350215-001-14470619

BASE MAP

SHEET NO.

05



DATE	DESCRIPTION	REVISIONS	DATE	DESCRIPTION



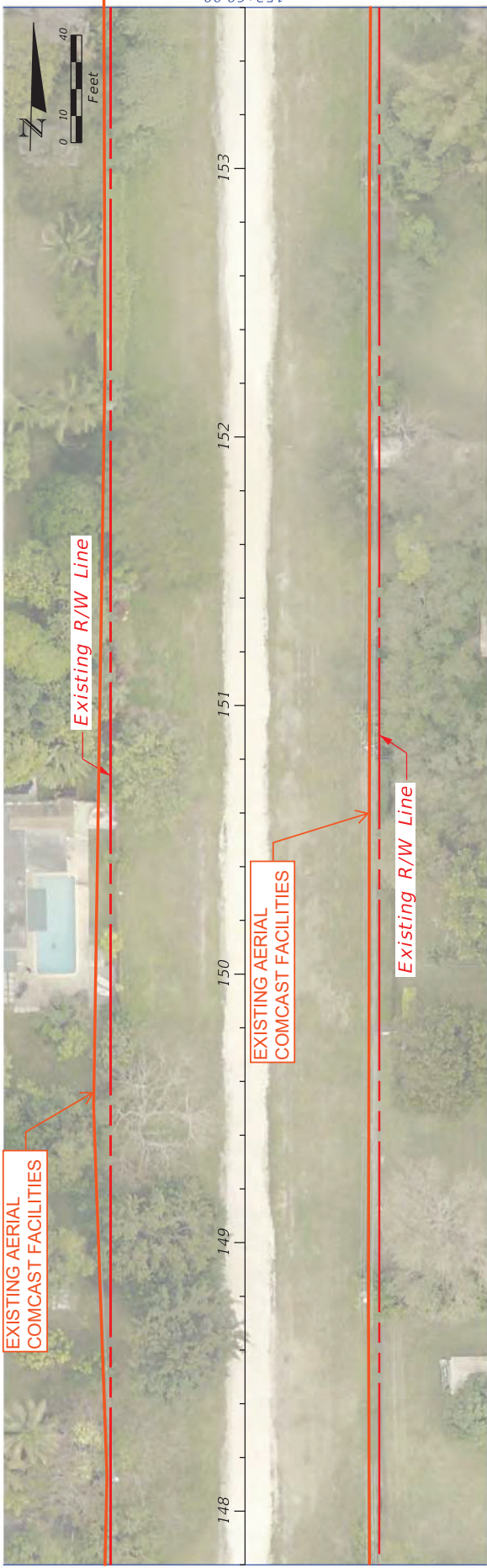
LUDLAM TRAIL CORRIDOR PD&E STUDY

Miami-Dade County Parks, Recreation, and Open Spaces (MDPROG5)	Hickman Building 275 NW 2nd Street Miami, FL 33128 305-755-7800	P&E CONTRACT NO.
		MDPROG5
		P&E PROJECT NO. 4350215-001-14470619

BASE MAP

SHEET
NO.

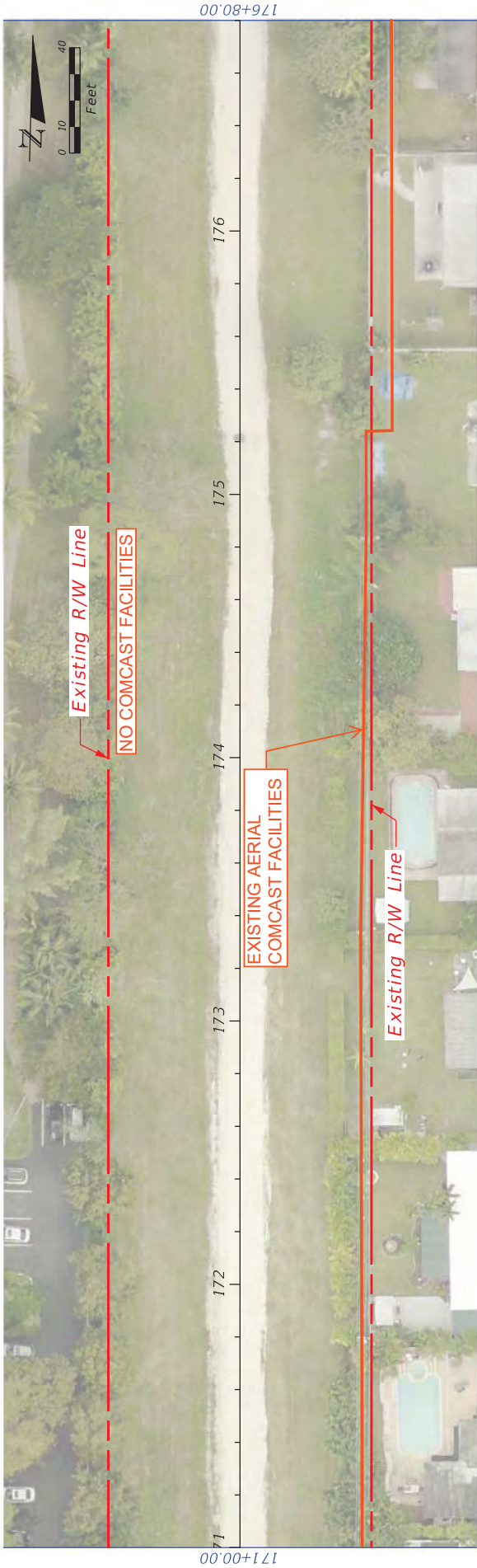
06



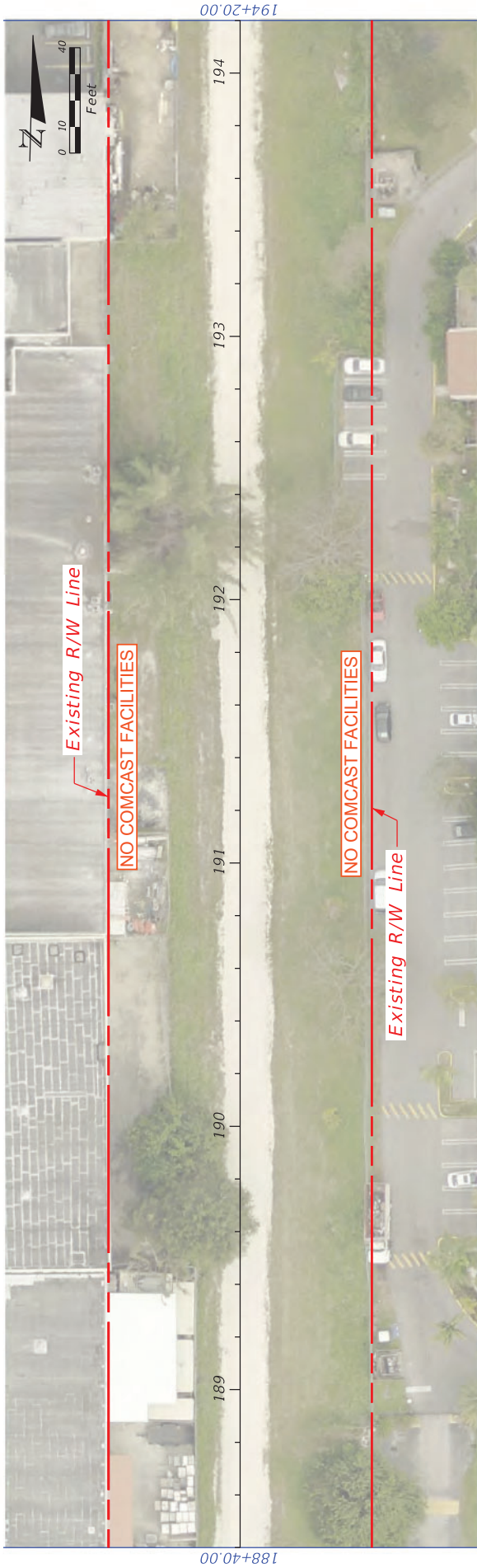
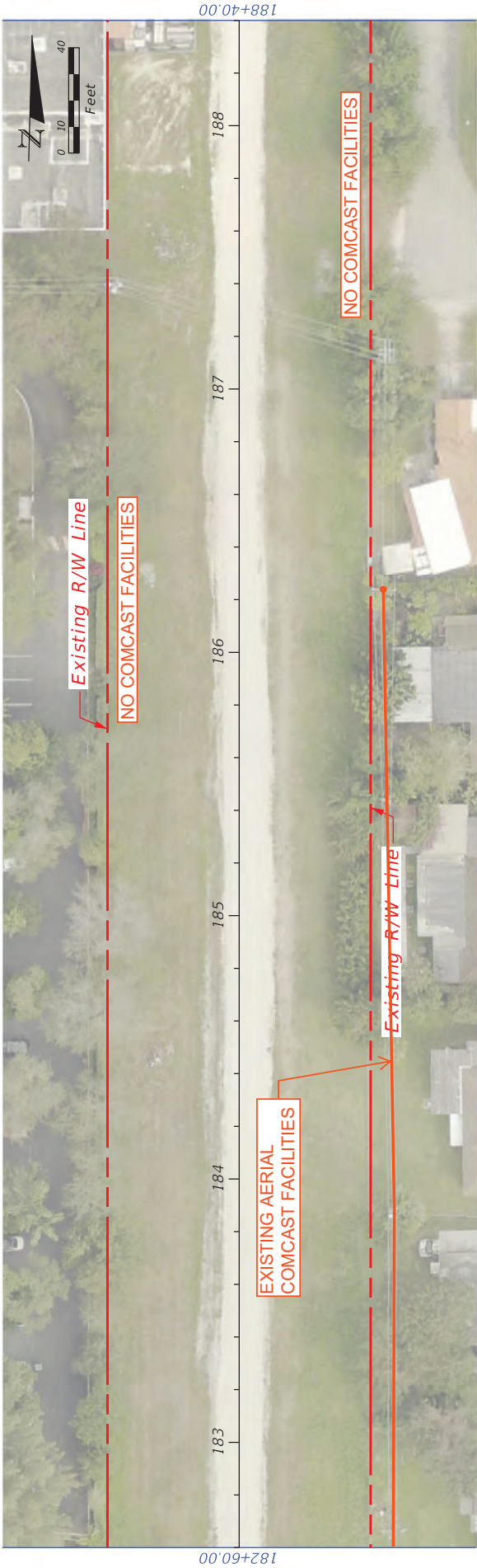
DATE	DESCRIPTION	REVISIONS	DATE	DESCRIPTION



LUDLAM TRAIL CORRIDOR PD&E STUDY		
Miami-Dade County Parks, Recreation, and Open Spaces (MDPROS)	Hickman Building 275 NW 2nd Street Miami, FL 33128 305/755-7800	P&R CONTRACT NO.
		REQ 7868
		P&R PROJECT NO.
		4350215-001-14470619



REVISIONS		DESCRIPTION	
DATE	DESCRIPTION	DATE	DESCRIPTION
<div> <div> </div> <div> <p>MIAMI-DADE COUNTY</p> </div> </div>			
<div> <div> <p>MIAMI-DADE County Parks, Recreation, and Open Spaces (MDPROS)</p> </div> <div> <p>Hickman Building 275 NW 2nd Street Miami, FL 33128 305-755-7800</p> </div> <div> <p>PS&R CONTRACT NO. MDPROS PS&R PROJECT NO. 4350215-001-14470619</p> </div> </div>			
LUDLAM TRAIL CORRIDOR PD&E STUDY			
BASE MAP		SHEET NO.	
		09	

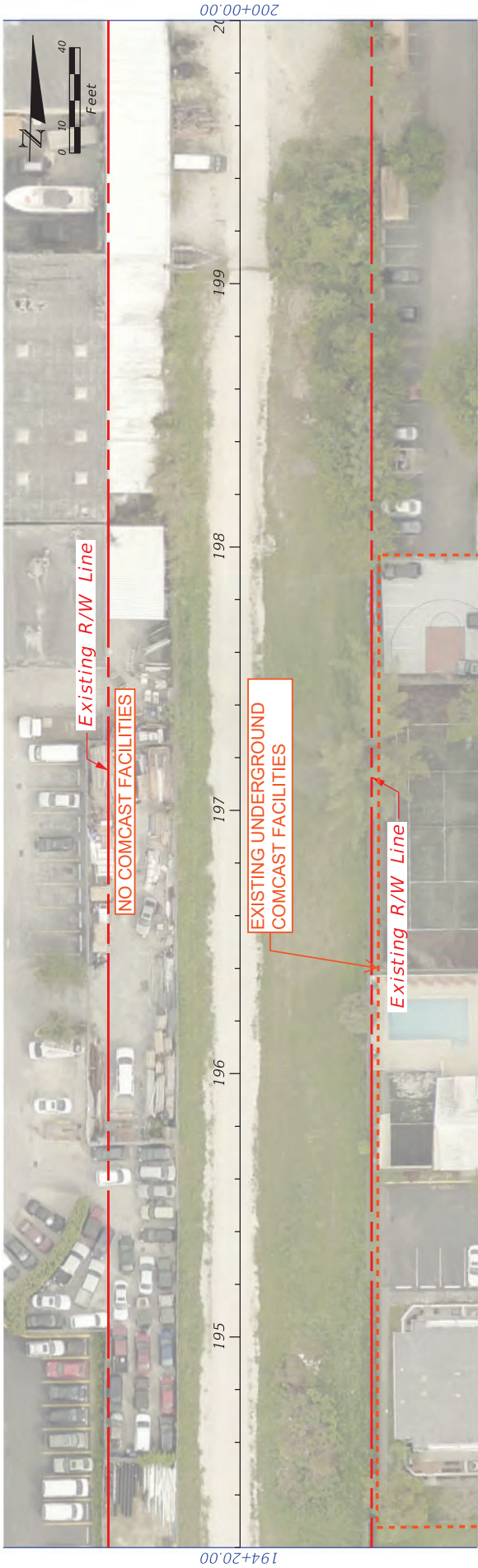


DATE	REVISIONS	
	DESCRIPTION	DATE

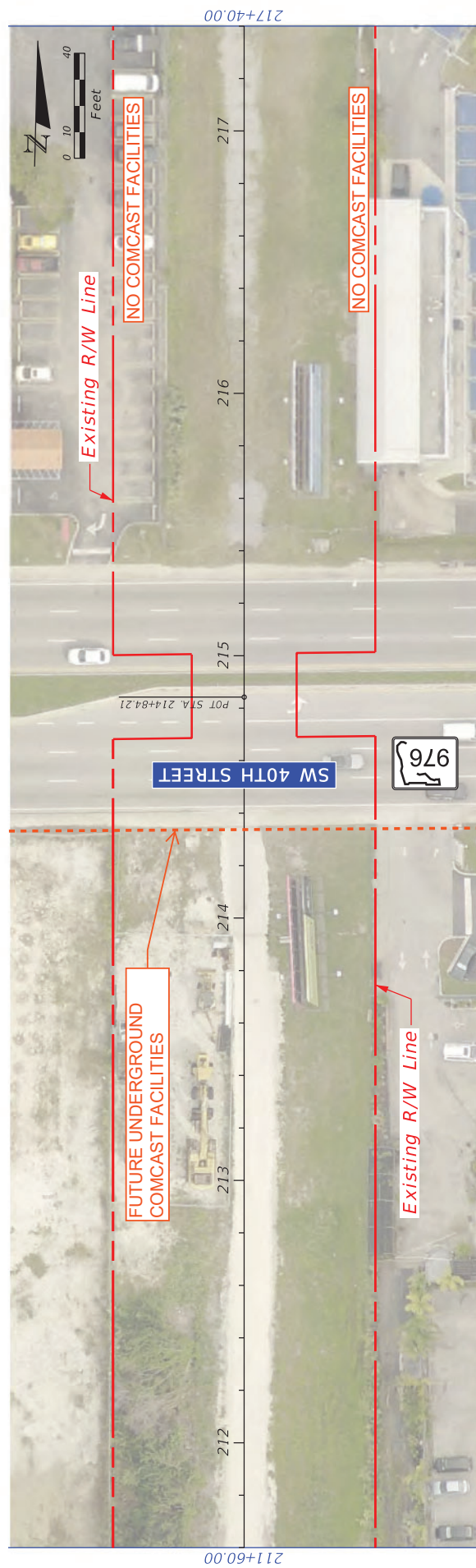
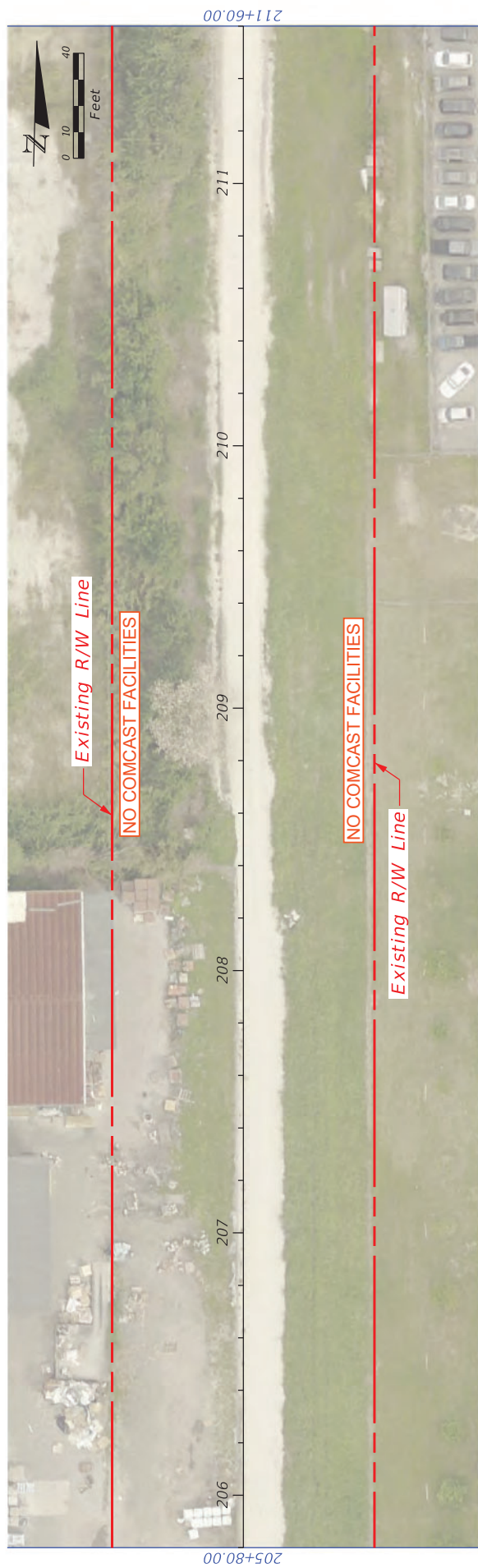


Miami-Dade County Parks, Recreation, and Open Spaces (MDPROS)	Hickman Building 275 NW 2nd Street Miami, FL 33128 305-355-7800	P&E CONTRACT NO.
		MDPROS PROJECT NO.
		4350215-001-14470619

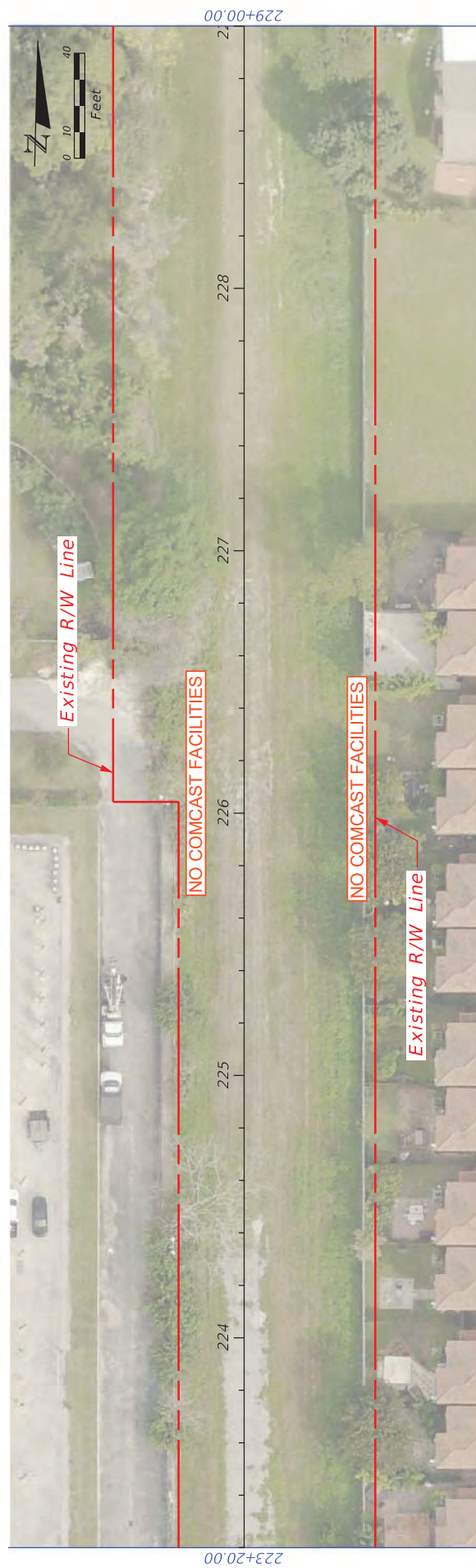
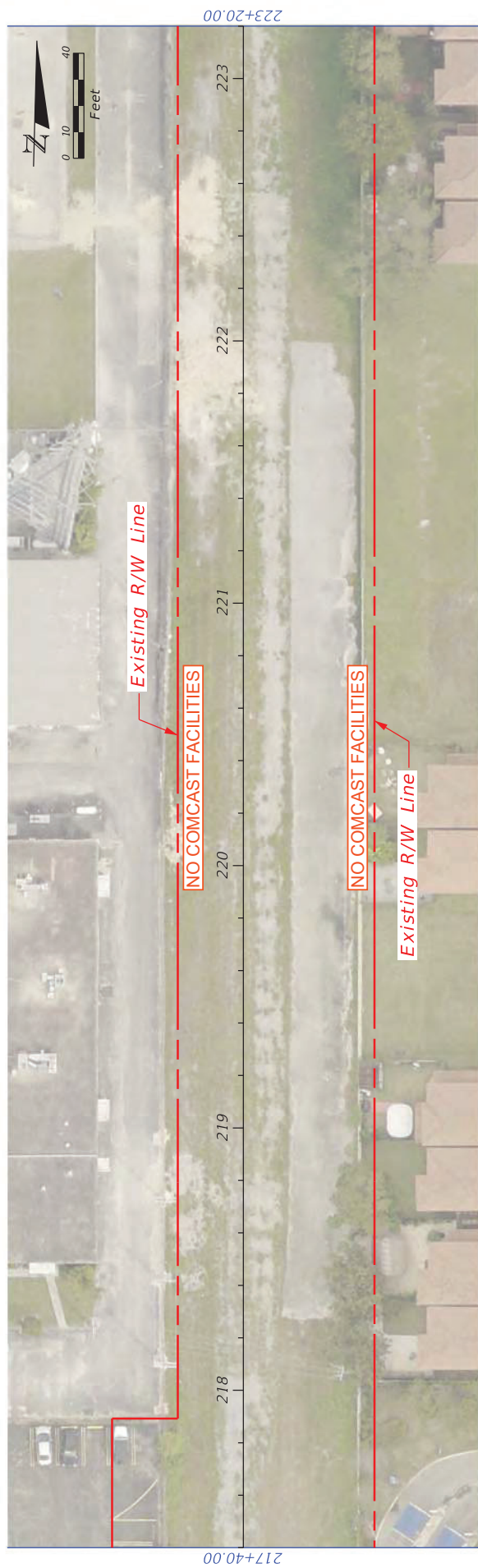
BASE MAP	
SHEET NO.	10



REVISIONS				LUDLAM TRAIL CORRIDOR PD&E STUDY		BASE MAP		SHEET NO.
DATE	DESCRIPTION	DATE	DESCRIPTION	Miami-Dade County Parks, Recreation, and Open Spaces (MDPROS)	Hickman Building 275 NW 2nd Street Miami, FL 33128 305-755-7800	P&R CONTRACT NO. RFQ 7868 P&R PROJECT NO. 43502-15-001-14470619	11	



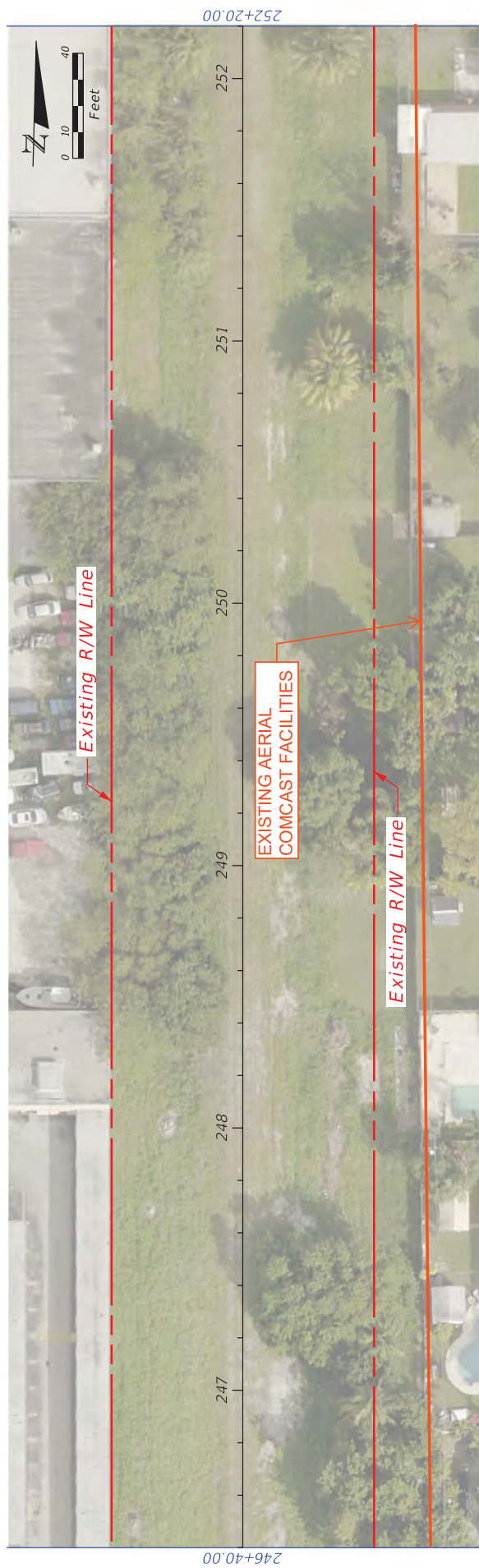
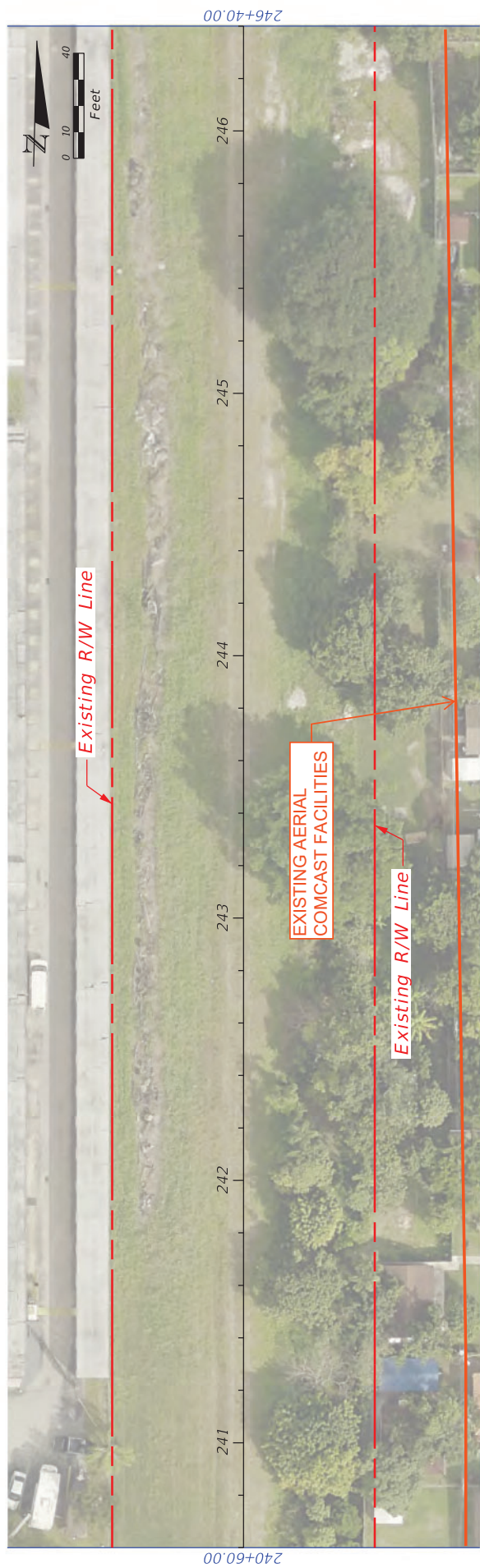
REVISIONS				
DATE	DESCRIPTION	DATE	DESCRIPTION	
				 MIAMI-DADE COUNTY
<i>LUDLAM TRAIL CORRIDOR PD&E STUDY</i>				
Miami-Dade County Parks, Recreation and Open Spaces (APPROX.)		Hickman Building 275 NW 2nd Street Miami, FL 33128 305-755-7900	P&R CONTRACT NO. RFQ 786B P&R PROJECT NO. J350D15.001.14470610	
				BASE MAP
				SHEET NO.
				12



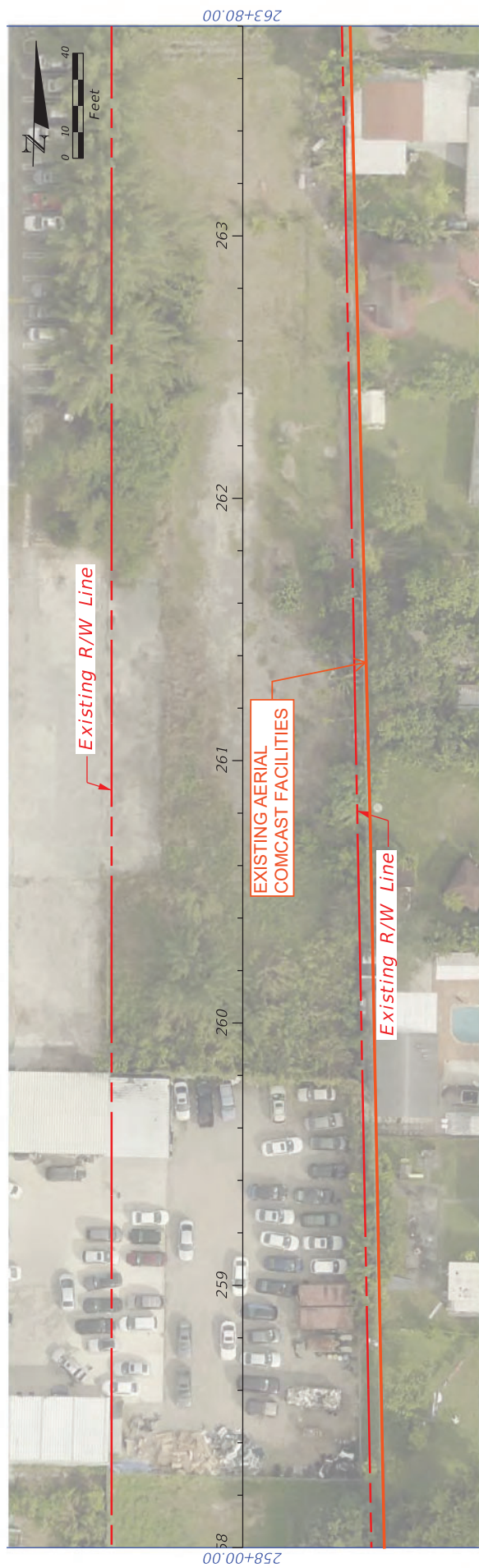
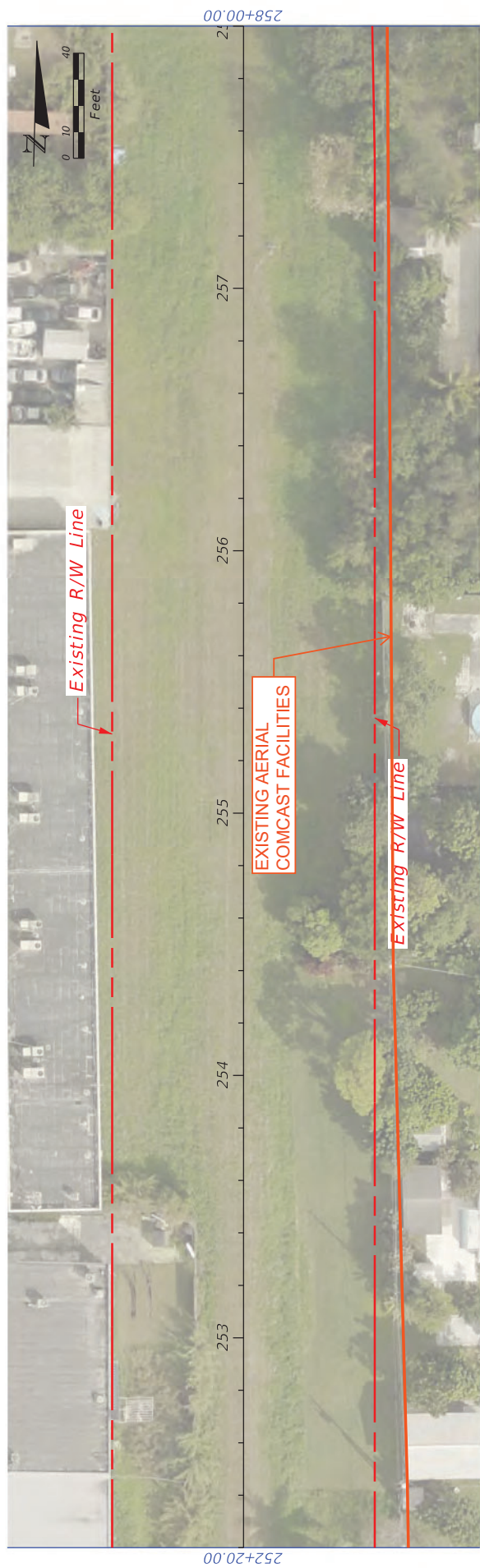
DATE		DESCRIPTION		REVISIONS		 MIAMI-DADE COUNTY		LUDLAM TRAIL CORRIDOR PD&E STUDY		BASE MAP		SHEET NO.
								Miami-Dade County Parks, Recreation and Open Spaces (APPROX.)		Hickman Building 275 NW 2nd Street P&R CONTRACT NO. RFO 786B P&R PROJECT NO. Miami, FL 33128 305-755-7200 J3500 J5.001.144.07010		13



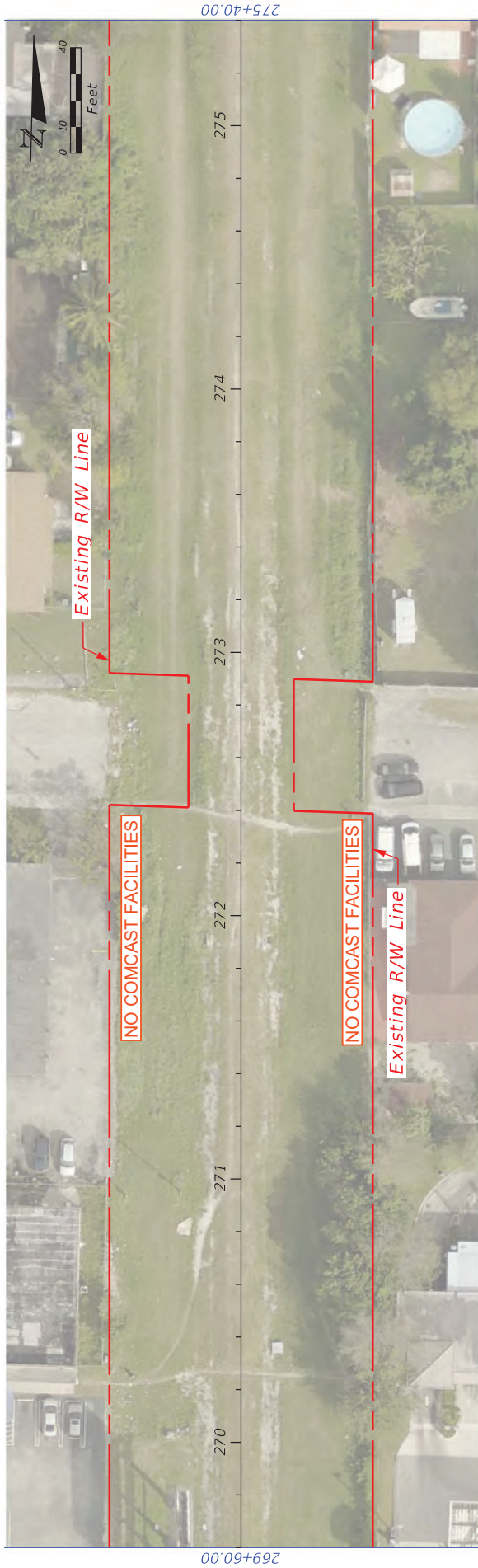
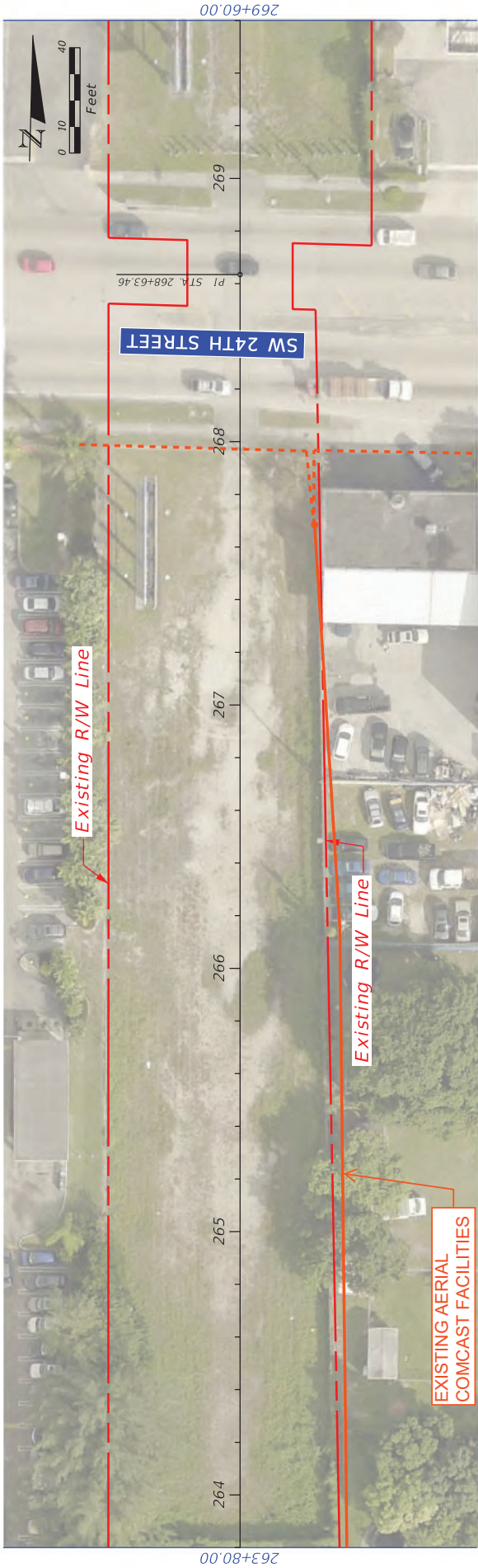
REVISIONS		LUDLAM TRAIL CORRIDOR PDR STUDY		 <div>MIAMI-DADE COUNTY</div>	BASE MAP		SHEET NO.
DATE	DESCRIPTION	DATE	DESCRIPTION		Miami-Dade County Hickman Building 275 NW 2nd Street Miami, FL 33128	P&R CONTRACT NO. RCO 7866	
					Parks, Recreation, and Open Spaces <th>P&R PROJECT NO. 4350215-001/4470619</th>	P&R PROJECT NO. 4350215-001/4470619	
					(INDPROS) 305-755-7800		



REVISIONS		LUDLAM TRAIL CORRIDOR PD&E STUDY		SHEET NO.
DATE	DESCRIPTION	DATE	DESCRIPTION	
				BASE MAP
		Miami-Dade County Parks, Recreation, and Open Spaces (MDPROS)	Hickman Building 275 NW 2nd Street Miami, FL 33128 305-755-7800	
			P&R CONTRACT NO. RFQ 786B P&R PROJECT NO. 43502-15-001-14470619	
				15



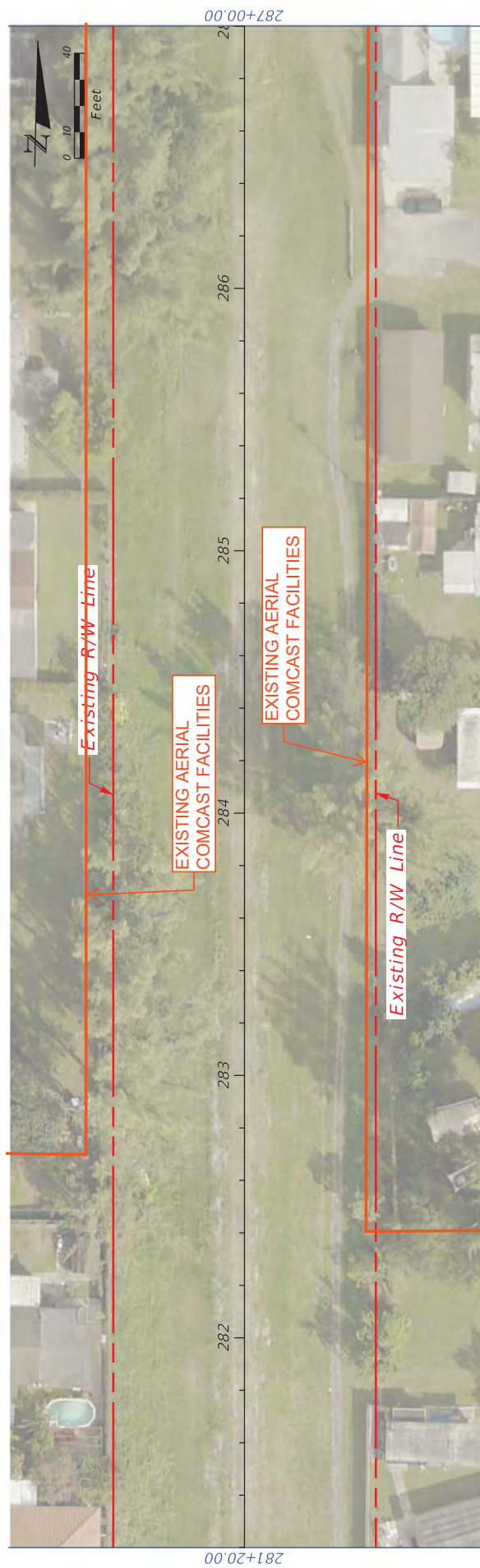
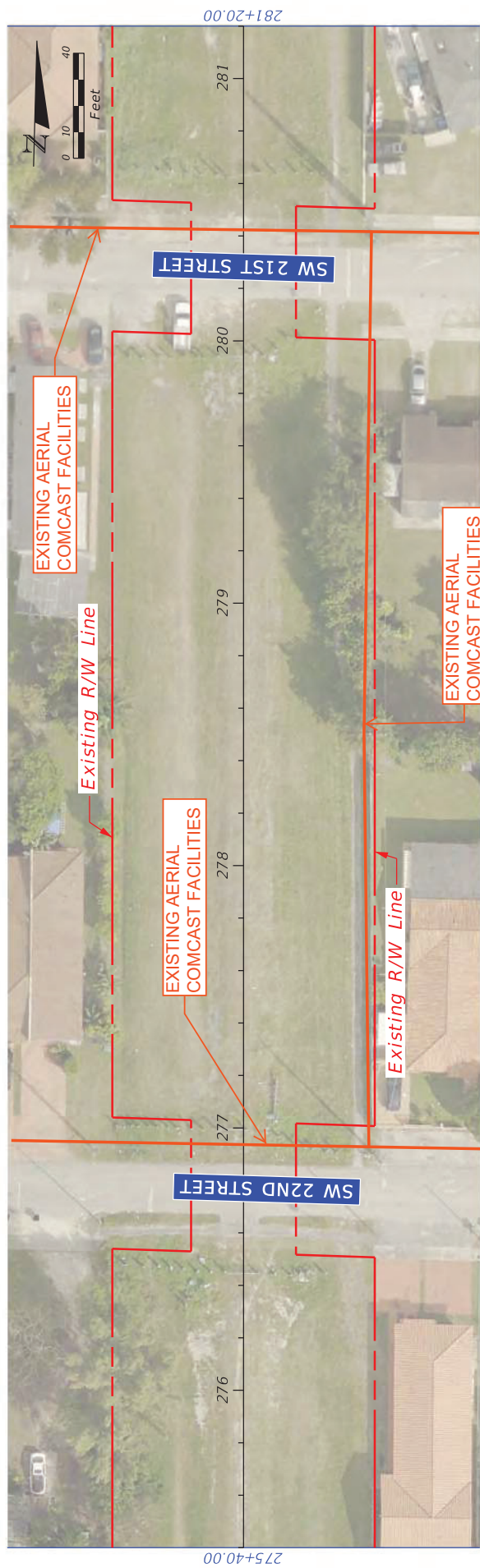
REVISIONS			LUDLAM TRAIL CORRIDOR PD&E STUDY		BASE MAP	SHEET NO.
DATE	DESCRIPTION	DATE	DESCRIPTION			
						
			Miami-Dade County Parks, Recreation, and Open Spaces (MDPROS)	Hickman Building 275 NW 2nd Street Miami, FL 33128 305-755-7800	P&R CONTRACT NO. RFQ 786B	
					P&R PROJECT NO. 43502-15-001:14470619	16



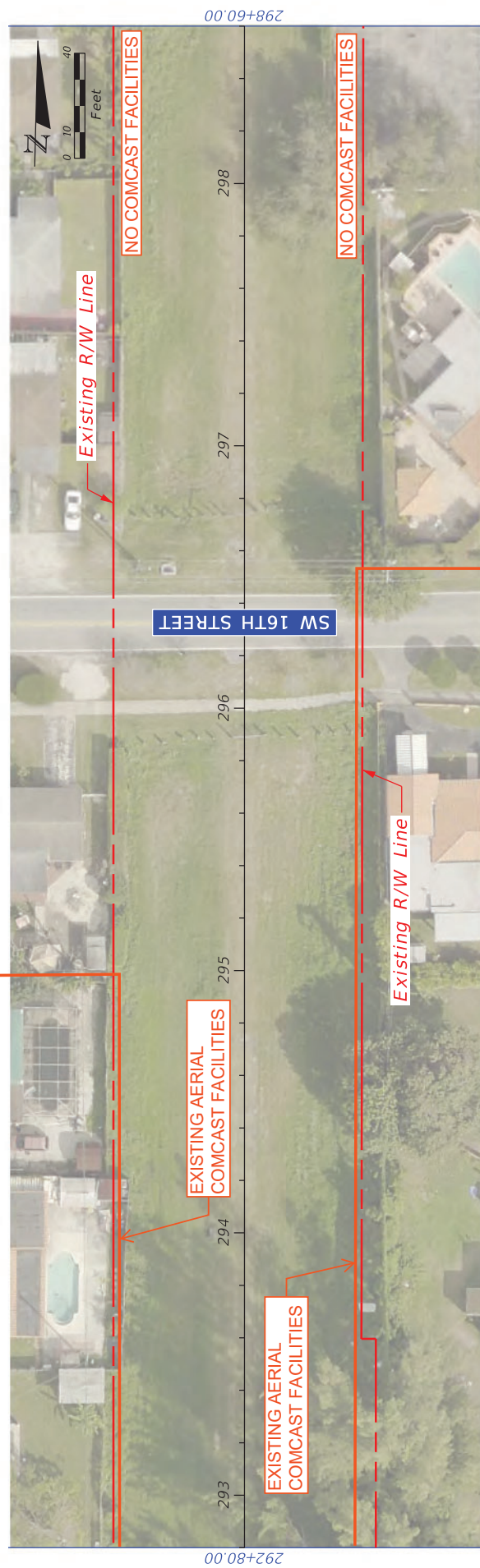
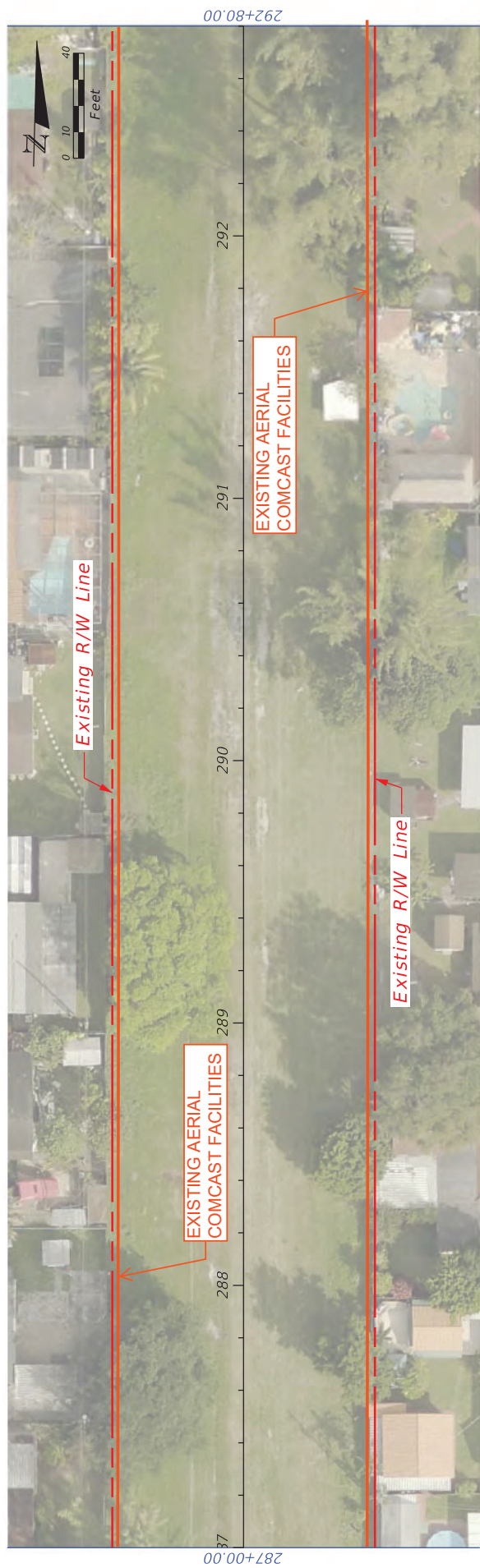
REVISIONS		LUDLAM TRAIL CORRIDOR PD&E STUDY		BASE MAP		SHEET NO.
DATE	DESCRIPTION	DATE	DESCRIPTION	Miami-Dade County Parks, Recreation, and Open Spaces (MDPROS)	Hickman Building 275 NW 2nd Street Miami, FL 33128 305-755-7800	
						17

P&E CONTRACT NO.	DESIGN NO.
4350215-001-14470619	4350215-001-14470619




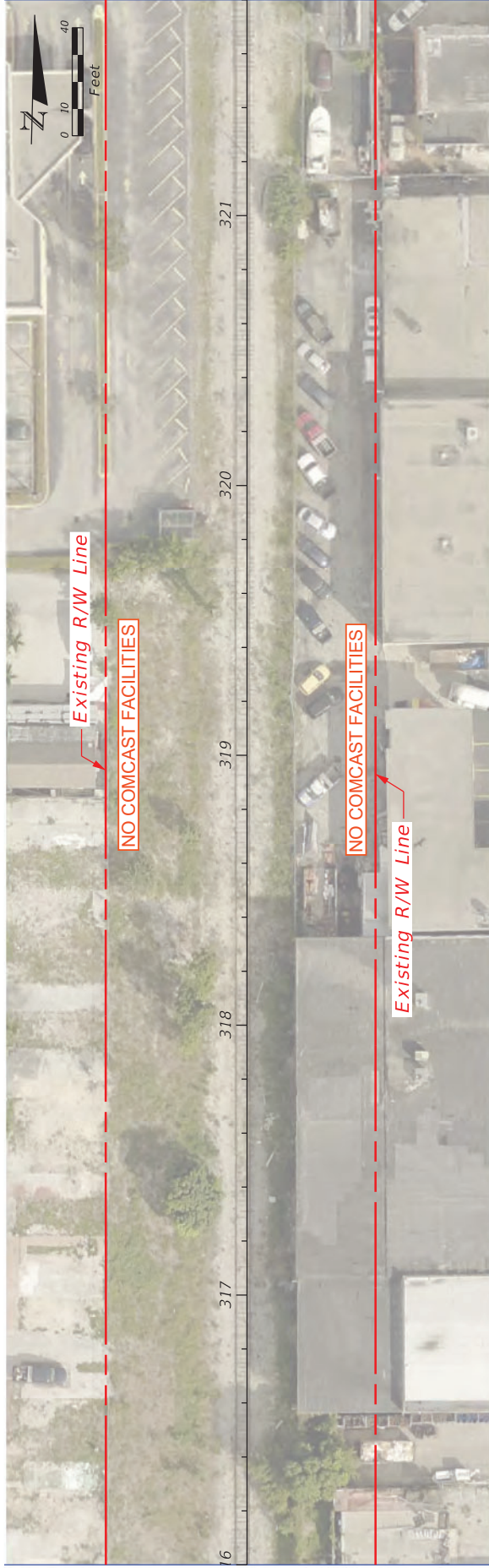
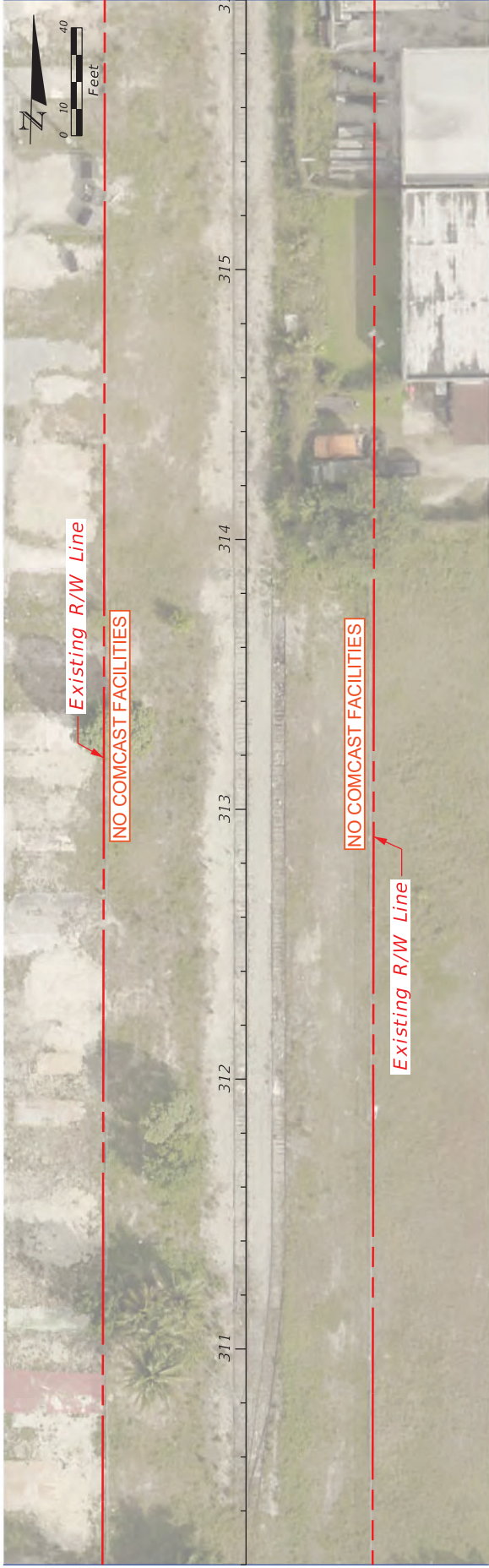


DATE		DESCRIPTION		REVISIONS		 MIAMI-DADE COUNTY	LUDLAM TRAIL CORRIDOR PD&E STUDY	BASE MAP	SHEET NO. 18
DATE		DESCRIPTION							
DATE		DESCRIPTION							
DATE		DESCRIPTION							

[illegible]



REVISIONS		DESCRIPTION		DATE		DATE	
DATE		DESCRIPTION		DATE		DATE	
							
				MIAMI-DADE COUNTY			
				LUDLAM TRAIL CORRIDOR PDE STUDY			
				Miami-Dade County Parks, Recreation, and Open Spaces (MDPROS)			
				Hickman Building 275 NW 2nd Street Miami, FL 33128 305-755-7800			
				P&R CONTRACT NO. RFQ 786B			
				P&R PROJECT NO. 43502-15-001-14470619			
						BASE MAP	
						SHEET NO. 20	



DATE	DESCRIPTION	REVISIONS	DATE	DESCRIPTION



Miami-Dade County
 Parks, Recreation, and
 Open Spaces
 (MDPROS)

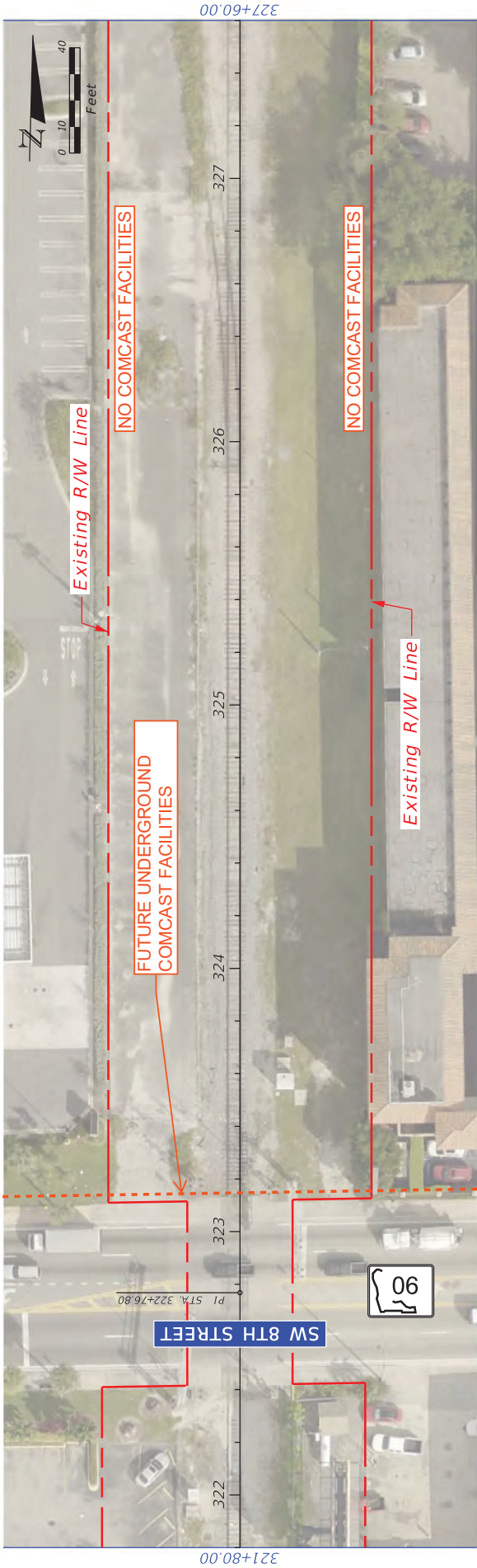
Hickman Building
 275 NW 2nd Street
 Miami, FL 33128
 305-755-7800

PS&R CONTRACT NO.
 43502-15-001-14470619

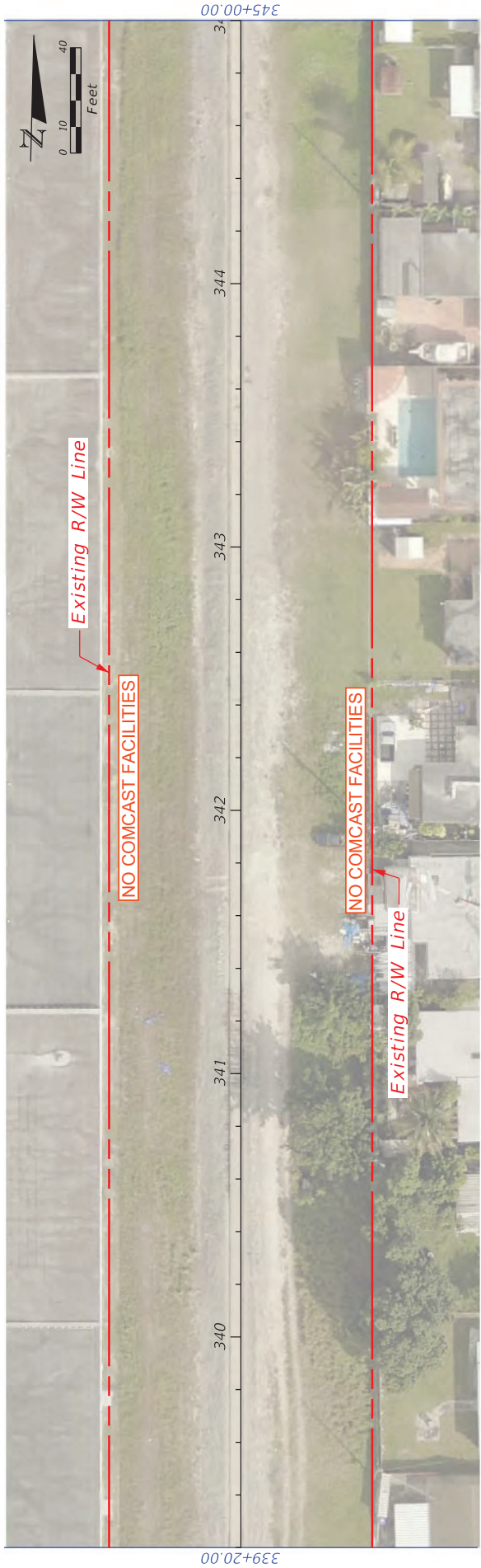
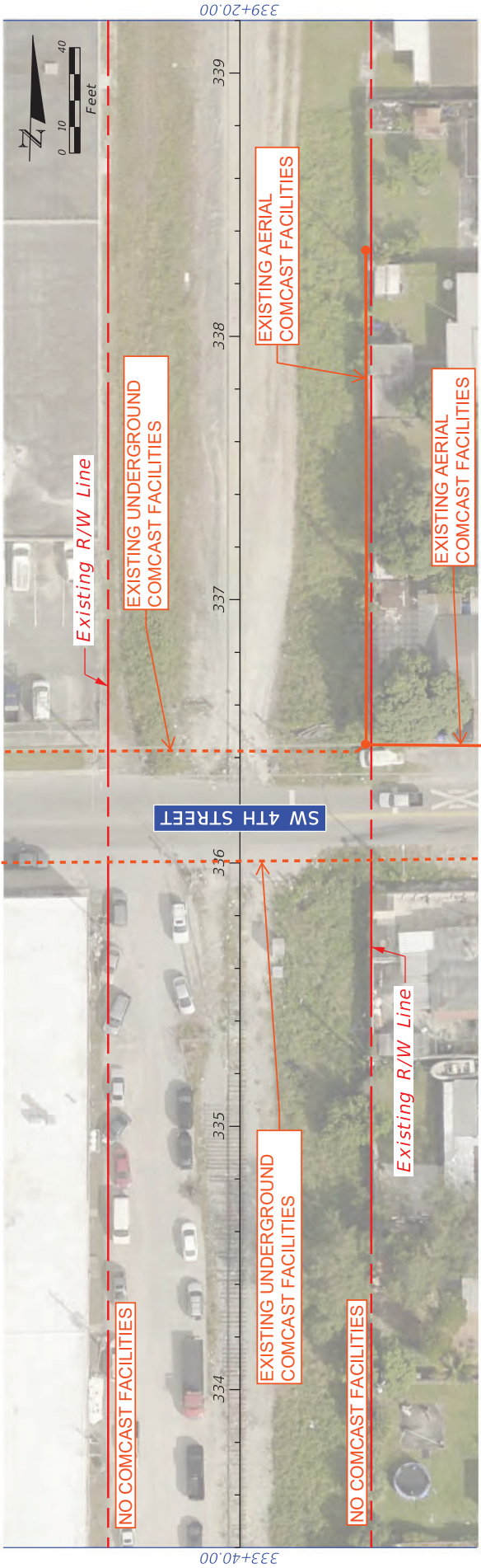
BASE MAP

SHEET NO.

21

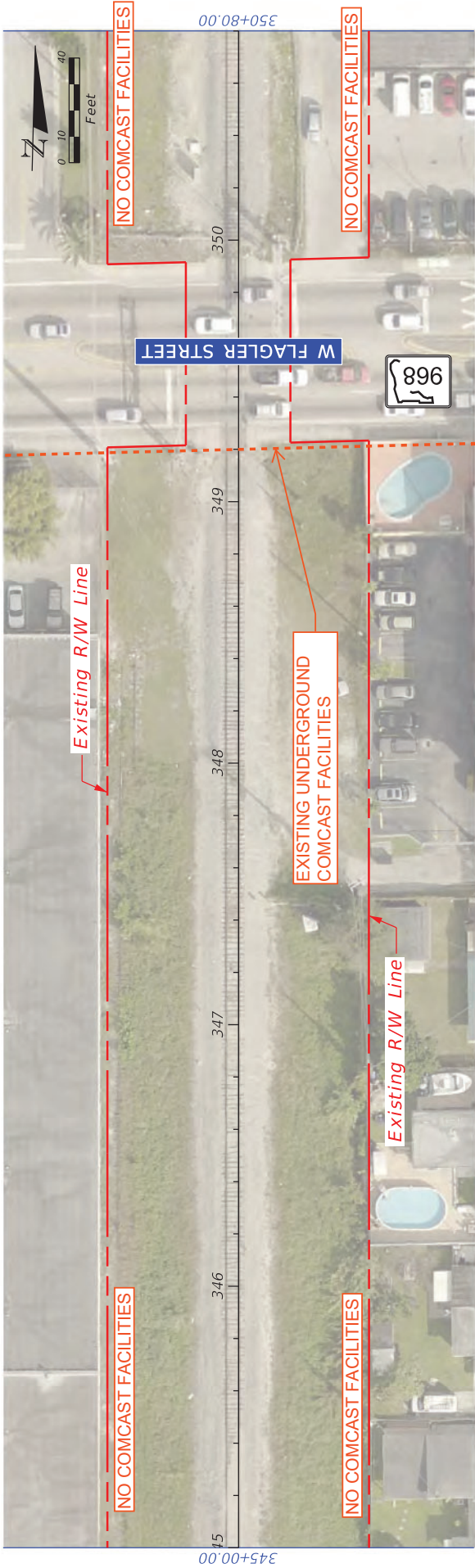


REVISIONS		DATE		DESCRIPTION	
DATE		DESCRIPTION		DATE	
<div> <div> </div> <div> <p>MIAMI-DADE COUNTY</p> </div> </div>					
<div> <div> <p>MIAMI-DADE County Parks, Recreation, and Open Spaces (MDPROS)</p> </div> <div> <p>Hickman Building 275 NW 2nd Street Miami, FL 33128 305-755-7800</p> </div> <div> <p>PR&E CONTRACT NO. 43502-15-001-14470619</p> </div> </div>					
<div> <div> <p>LUDLAM TRAIL CORRIDOR PD&E STUDY</p> </div> <div> <p>BASE MAP</p> </div> </div>					
SHEET NO.				22	

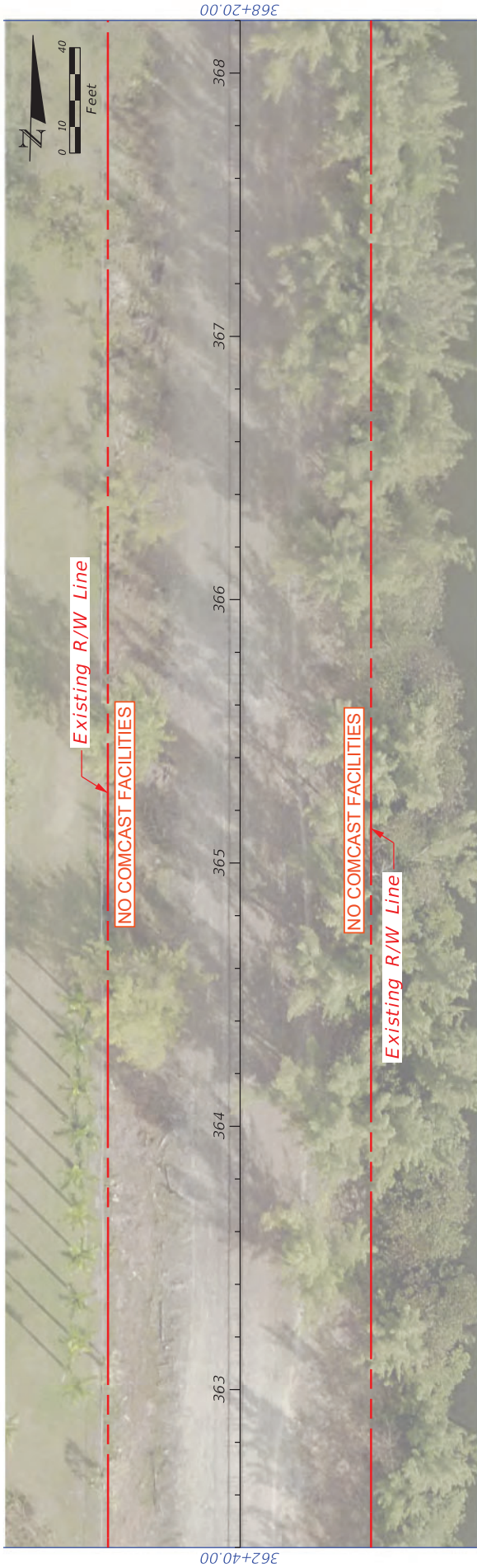


REVISIONS		LUDLAM TRAIL CORRIDOR PD&E STUDY		BASE MAP		SHEET NO.
DATE	DESCRIPTION	DATE	DESCRIPTION	MIAMI-DADE COUNTY	NO.	
				Miami-Dade County Parks, Recreation, and Open Spaces (MDPROS)		23
				Hickman Building 275 NW 2nd Street Miami, FL 33128 305-755-7800		
				P&E CONTRACT NO. 4350215-001-14470619		
				P&E PROJECT NO. 4350215-001-14470619		

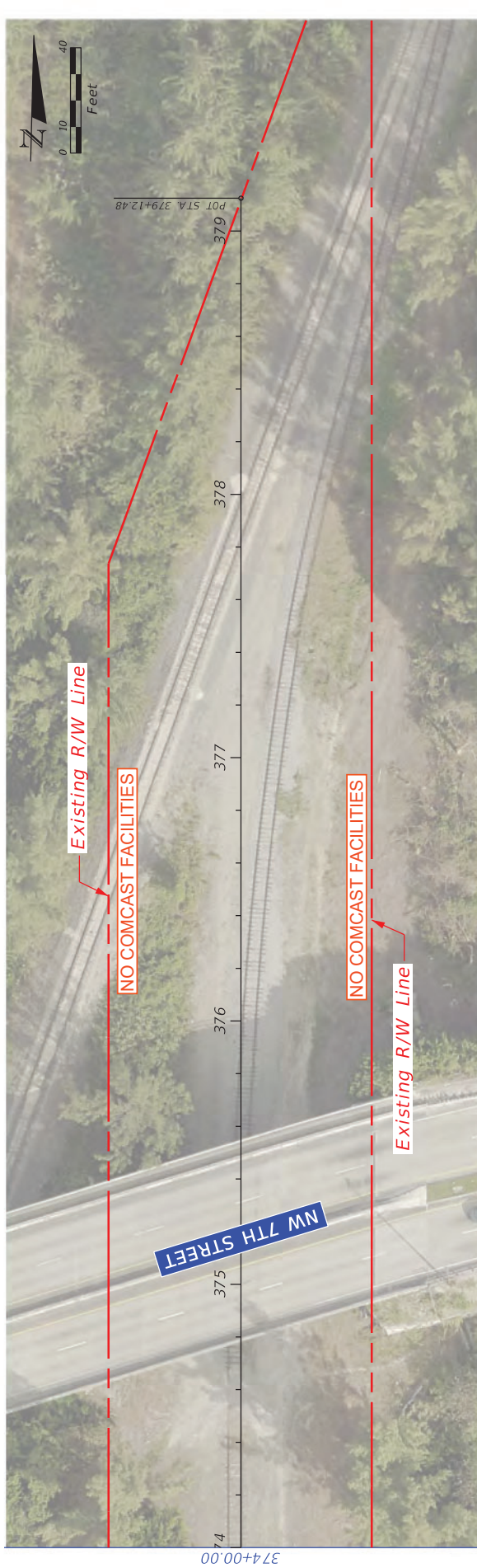




REVISIONS		DESCRIPTION	
DATE	DESCRIPTION	DATE	DESCRIPTION
<div> <div> </div> <div> <p>MIAMI-DADE COUNTY</p> </div> </div>			
<div> <div> <p>LUDLAM TRAIL CORRIDOR PD&E STUDY</p> </div> <div> <p>Miami-Dade County Parks, Recreation, and Open Spaces (MDPROS)</p> </div> <div> <p>Hickman Building 275 NW 2nd Street Miami, FL 33128 305-755-7800</p> </div> <div> <p>P&E CONTRACT NO. P&E PROJECT NO. 4350215-001-14470619</p> </div> </div>			
BASE MAP			SHEET NO.
			24



REVISIONS		LUDLAM TRAIL CORRIDOR PD&E STUDY		BASE MAP		SHEET NO.
DATE	DESCRIPTION	DATE	DESCRIPTION	MIAMI-DADE COUNTY	PS&R CONTRACT NO.	
				Miami-Dade County Parks, Recreation, and Open Spaces (MDPROS)	Hickman Building 275 NW 2nd Street Miami, FL 33128 305-755-7800	25
					CONTRACT NO. 4350215-001-14470619	
					PROJ. NO. 4350215-001-14470619	
					PS&R PROJ. NO.	



REVISIONS		LUDLAM TRAIL CORRIDOR P&E STUDY		BASE MAP		SHEET NO.
DATE	DESCRIPTION	DATE	DESCRIPTION	MIAMI-DADE COUNTY		
				Miami-Dade County Parks, Recreation, and Open Spaces (MDPROS)	Hickman Building 275 NW 2nd Street Miami, FL 33128 305-755-7800	26
					P&E CONTRACT NO. MDPROS	
					P&E PROJECT NO. 4350215-001-14470619	