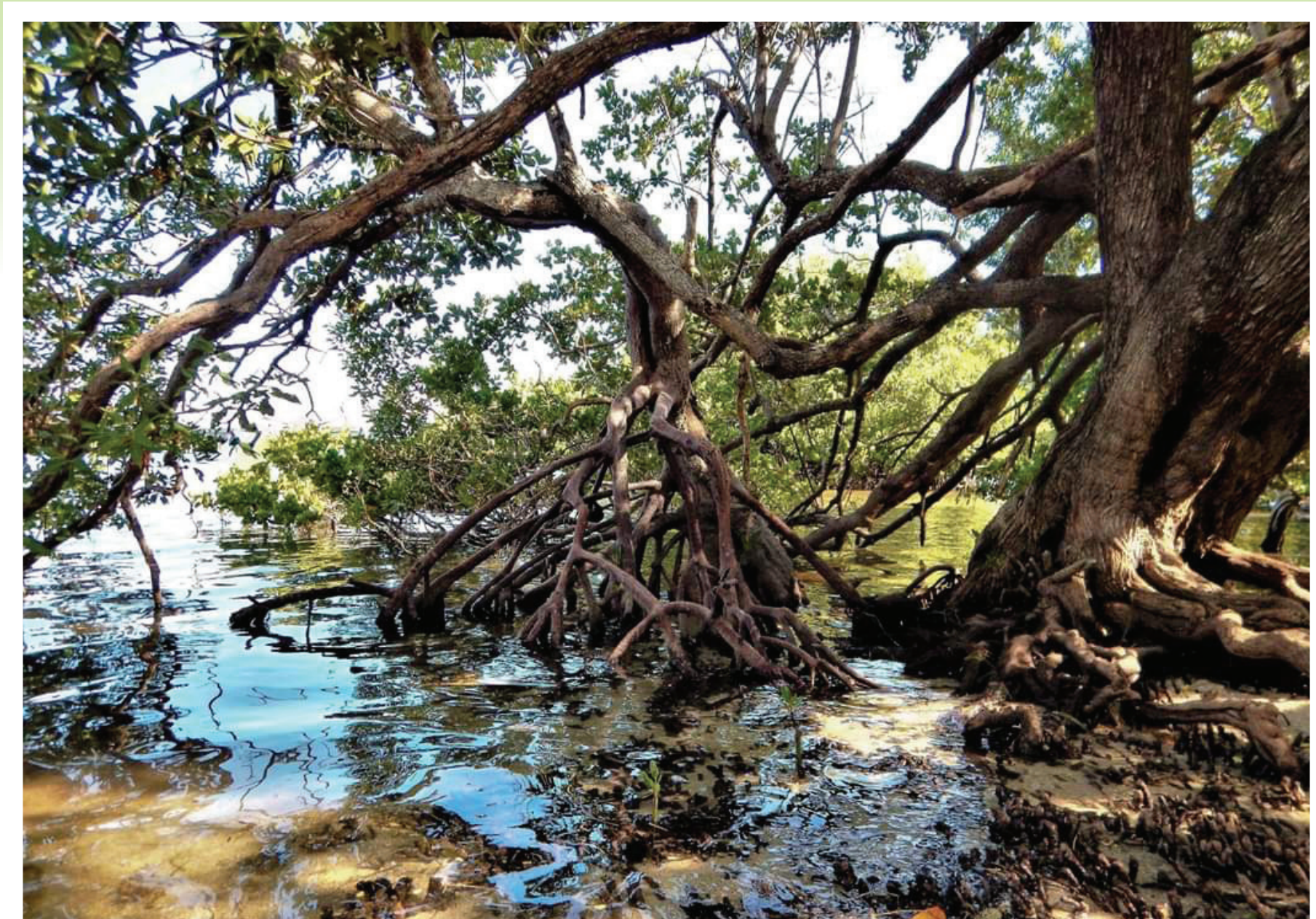


MANGROVE FOREST



- ① Characterized by salt tolerant plant species such as green buttonwoods, red mangroves, white mangroves and black mangroves
- ② Provides important nursery habitat for juveniles of many fish and invertebrate species
- ③ Helps stabilize soils and protect shorelines from erosion and storm surge
- ④ You can find mangrove forests at the Charles Deering Estate, Greynolds Park, Matheson Hammock Park, and Black Point Marina



Scan here for
Spanish and Creole

Exhibit provided by



CAN YOU FIND THE FOLLOWING IN THE ECOMODEL?

- ☐ Great blue heron
- ☐ Double crested cormorant
- ☐ Red mangrove
- ☐ Guano

