



MIAMI-DADE PARKS, RECREATION AND OPEN SPACES
AND THE PARKS FOUNDATION OF MIAMI-DADE

**PARKS AS CATALYSTS
FOR GREENER, HEALTHIER,
MORE ECONOMICALLY
VIBRANT COMMUNITIES**

P R O G R A M

W e d n e s d a y , **A p r i l 18**

Great Park Summit

2 0 1 2

PRESENTED BY AVMED HEALTH PLANS

SPONSORS AND PARTNERS

Great Park Summit 2 0 1 2

A special thanks to our Sponsors and Partners! Without their generous contributions and support the 2012 Great Park Summit and Mayors' Reception would not have been possible.

OUR SPONSORS

Presenting Sponsor (Summit)

AvMed

Title Sponsor (Summit)

IBM

Presenting Sponsor (Reception)

The Speedwell
Foundation

EMERALD SPONSORS

Proctor & Gamble
Professional

Whole Foods Market
– Coral Gables
Sonesta Bayfront Hotel
– Coconut Grove

JADE SPONSORS

Rep Services, Inc.
AECOM
Rosenberg Garner Design
Starbucks
Gilly Vending
Just Energy
URS

amec

Health Foundation
of South Florida

SAGE SPONSORS

Atkins
Kimley-Horn
and Associates
Vortex Aquatic Structures
International Inc.
Shade Systems Inc.
United HomeCare
WRT

OUR PARTNERS

The Parks Foundation
of Miami-Dade

Fairchild Tropical
Botanic Garden

City of Miami Beach

Health Foundation
of South Florida

Miami-Dade County
Health Department

University of Miami





MISSION STATEMENT

**WE CREATE OUTSTANDING
RECREATIONAL, NATURAL,
AND CULTURAL EXPERIENCES
TO ENRICH YOU AND
ENHANCE THE QUALITY
OF LIFE FOR OUR COMMUNITY
FOR THIS AND FUTURE GENERATIONS.**



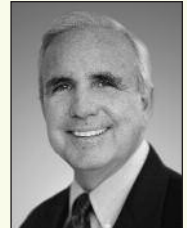
OFFICE OF THE MAYOR MIAMI-DADE COUNTY, FLORIDA

CARLOS A. GIMENEZ
MAYOR

April 18, 2012

Dear Guests:

It is my pleasure to welcome you to the Great Park Summit 2012!



This marks the fourth Summit hosted by the Miami-Dade County Parks, Recreation and Open Spaces Department. The first, held in 2006, initiated the development of the County's Parks and Open Space Master Plan which was approved by the Board of County Commissioners in 2009 and incorporated into the Comprehensive Development Master Plan in 2010.

Each subsequent Summit, in 2008 and 2010, have provided us with the opportunity to further foster a spirit of collaboration and coordination between public and private entities and to implement the Plan's vision for a seamless park system throughout Miami-Dade County. The themes of the previous Summits highlighted the multiple benefits of parks, including benefits to the economy, the environment and the health of citizens and tourists of Miami-Dade County.

This year's theme is "Partnerships Through Creative Initiatives". Speakers will discuss the benefits of parks with a focus on the significant role that parks and open space can play in the community such as promoting economic vitality, health and general neighborhood revitalization. Highlighted will be strategies that create parks and open space as a result of a unique nationwide initiative called Red Fields to Green Fields.

I hope you enjoy the event and will join us again in two years for the Great Park Summit 2014!

Sincerely,

A handwritten signature in black ink, which appears to read "Carlos A. Gimenez". The signature is stylized with a large, sweeping initial "C" and "G".

Carlos A. Gimenez
Mayor



MIAMI-DADE COUNTY BOARD OF COUNTY COMMISSIONERS



"I hope that the Summit will serve as an opportunity to further the interaction and sharing of ideas and insights on how we can work together to continue to improve the quality of life in our community for this generation and those that follow."

Joe A. Martinez
Commissioner, District 11
Chair of the Board of County Commissioners



"The Great Park Summit is a time for us to reignite the spirit of collaboration and partnership that is necessary to build a lasting coalition of park and public space advocates."

Javier Souto
Commissioner, District 10
Chair of Recreation, Culture and Tourism Committee



MIAMI-DADE COUNTY PARKS, RECREATION AND OPEN SPACES DEPARTMENT



"Today we celebrate our fourth Great Park Summit and with it the many achievements that we have accomplished together over the years. It is important that the vision and guiding principles of the Open Space Master Plan are the framework for addressing the many challenges that we face today and will enable us to carry forward the idea of a more livable and sustainable community."

Jack Kardys
Director
Miami-Dade County Parks, Recreation and Open Spaces Department

Partnerships Through Creative Initiatives

The Parks and Open Space Master Plan envisions that great parks, public spaces, natural and cultural areas, streets, greenways, and trails form the framework for a more livable and sustainable community. Through partnerships, the plan will be integrated into the overall fabric of the community to build a place where residents want to live; employers want to do business and tourists want to visit.

SCHEDULE

8:00 – 9:00 AM

Registration

Healthy Options Breakfast by Gilly Vending and Starbucks
Exhibitors and Exhibitor Videos

9:00 AM – 9:30 AM WELCOMING & OPENING REMARKS:

Bruce Greer, President, Board of Trustees,
Fairchild Tropical Botanic Garden

Honorable Carlos A. Gimenez, Mayor, Miami-Dade County

Honorable Javier D. Souto, Miami-Dade County
Commissioner

Jack Kardys, Miami-Dade County Parks, Recreation and
Open Spaces

PRESIDING:

Harvey Ruvin, Clerk of Courts, Miami-Dade County;
Chair, Board of County Commissioners Task Force on
Climate Change

9:30 – 10:10 AM

Honorable Knox White

Mayor, Greenville, South Carolina

TOPIC: *The Economic Impacts of Parks, Trails and Greenways*

10:10 AM Break

10:20 – 11:00 AM

Rick Little

Vice President of Administration & Strategic Projects,
Friends of the High Line

TOPIC: *The High Line: From Abandoned to Embraced*

Great Park Summit

2 0 1 2

MIAMI-DADE PARKS, RECREATION AND OPEN SPACES
AND THE PARKS FOUNDATION OF MIAMI-DADE



FAIRCHILD TROPICAL BOTANIC GARDEN

April 18, 2012

11:00 – 11:20 AM

Jack Kardys

Director, Miami-Dade Parks, Recreation and Open
Spaces Department

TOPIC: *Miami-Dade County Red fields to Green fields*

11:20 – 11:30 AM

Ed Hannum

President & COO, AvMed Health Plans

TOPIC: *Focus on Wellness for a Strong ROI*

11:30 – 11:40 AM

Cate Richards

North America Smarter Sales Leader, IBM

TOPIC: *A Smarter County Shines in Miami Dade*

11:40 – NOON CLOSING REMARKS:

Jack Kardys

Director, Miami-Dade Parks, Recreation and Open
Spaces Department

NOON – 1:00 PM

Lunch by Whole Foods Market Coral Gables
Exhibitors

1:00 – 2:00 PM

Fairchild Tropical Botanic Garden

Tram Tours and Walking Opportunities

P R E S E N T E R S



HARVEY RUVIN - PRESIDING. Harvey Ruvin has 35 years of public service that includes 20 years as a Miami-Dade County Commissioner. Throughout his career, he has proven to be a successful advocate for the environment.

As a County Commissioner, Mr. Ruvin sponsored ordinances, referenda and projects that protected the environment, including a \$90 million tax levy for the purchase and maintenance of endangered lands, the re-nourishment of Haulover Beach and the restoration and enhancement of Biscayne Bay.

Serving on numerous civic organizations and councils, Mr. Ruvin has made an impact on national and international levels. He was a delegate to the United Nations World Congress for a Sustainable Future, a member of President Carter's

Council on Energy Efficiency and President Clinton's Sustainable Communities Task Force of the President's Council on Sustainable Development, and most recently, Mr. Ruvin is Chair of the Board of County Commissioners Task Force on Climate Change.



MAYOR KNOX H. WHITE - CITY OF GREENVILLE, S.C. Knox White has served as Mayor of Greenville since December 1995. As mayor he has the goal of making the city of Greenville "the most beautiful and livable city in America." he has emphasized neighborhood revitalization, economic development, and transformational projects for downtown.

Key strategic projects include: removal of the Camperdown Bridge and creation of Falls Park, the restoration of the Poinsett Hotel and Court Street, new retail (Mast General Store), a downtown baseball stadium (Fluor Field), riverfront development and a bike and walking trail system (Swamp Rabbit Trail) throughout the city, public art initiatives along

Main Street, record annexations, and a model infrastructure for Clemson CU-ICAR.

Neighborhood initiatives include enhanced beautification efforts, traffic calming, sidewalk construction, support for neighborhood associations, reinvestment in neighborhood parks, master plans for commercial corridors, and attractive new housing in the city's special emphasis neighborhoods.

Under the mayor's leadership, the city has gone 15 years without a property tax increase, maintains a AAA bond rating, and enjoys a reputation for solving problems on an innovative and bipartisan basis.

A native of Greenville, and a graduate of Christ Church Episcopal School, Greenville High School, Wake Forest University and the University of South Carolina Law School. He is a partner in the law firm of Haynsworth, Sinkler & Boyd, where he heads the firm's immigration and customs practices.

He is married to Marsha P. White and they have two children.



RICK LITTLE - FRIENDS OF HIGH LINE. Rick Little is Friends of the High Line's Vice President of Administration & Strategic Projects. Throughout his 9-year tenure with Friends of the High Line, he has been involved in nearly every aspect of the organization's mission and has managed its growth from a grassroots organization with a staff of 5 to a park conservancy which now employs over 70 year-round employees, and seasonally over 100. He currently oversees the administration of the organization, with a focus on strategy, finance, communications, technology, and human resources. Rick is originally from Bellingham, Washington and graduated from Bennington College. He has lived in New York City for the past 10 years.

THE SOUTH FLORIDA PARK COALITION CHARTER

PREAMBLE:

The South Florida Parks Coalition is created to foster a seamless, connected, and sustainable parks system for the South Florida community. The Coalition will meet, collaborate, share knowledge and professional expertise regarding park, recreation and conservation open spaces.

Our work is rooted in the fundamental values of recreation opportunity and environmental stewardship. It is dedicated to building a model park system that will promote a greener, healthier, and more livable South Florida community.

We believe that a model park system consists of parks and public spaces, recreation facilities, greenways, blueways, great streets and conservation lands.

We believe that a sustainable, model Park System must be planned and created with an eye to its impact on the neighborhood, city, county and region as a whole. It must be effective, efficient, fair and balanced. It must work with other public and private agencies; and it must enhance the health, safety, happiness and well-being of all residents and visitors to South Florida, now and in the future.

We believe that a model park system is integral to social, environmental and economic sustainability; it must become a vital part of everyday human experience; it must be connected spiritually and physically; and it must provide accessibility for people of all means and abilities. The model Park System must raise the quality of life for the region and inspire generations of people to care for and contribute to their communities.

Based on the beliefs of equity, access, beauty, seamlessness, sustainability and multiple benefits,

We assert that the Model Park System shall:

- Ensure an accessible, diverse and balanced system of passive and active recreation opportunities that promote safety, security and healthy lifestyles.
- Ensure the preservation, protection and enhancement of ecological resources to sustain and preserve biodiversity and the environmental health of the region.
- Ensure the preservation, protection and enhancement of cultural resources to sustain landscapes and their historical and heritage features.
- Ensure that park, recreation and conservation open spaces guide the shape of urban form.
- Ensure that there is no net loss of park, recreation or conservation lands and mandate replacement of land of equal value, context and significance.
- Ensure community stewardship of park, recreation, and conservation open spaces by fostering educational and recreational programming, civic art, volunteerism and support of philanthropic and grassroots organizations.
- Ensure the continual enhancement of economic development and quality of life in the region by partnering and collaborating with the business community.
- Ensure the equitable distribution of park, recreation and conservation open spaces for all communities in the region.
- Ensure and support responsible growth to conserve environmental and cultural resources, promote economic investment, and support neighborhood stability, while reclaiming marginal and abandoned areas.
- Ensure the support and development of an interconnected framework of transportation alternatives such as transit, pedestrian, bicycle and waterway systems that link parks, recreation and conservation open spaces to each other and to communities.
- Ensure high standards of design excellence, innovation and beauty to support economic, social and environmental sustainability of the region.

PARK AND OPEN



SPACE SYSTEM



MASTER PLAN



VISION

PARK AND OPEN SPACE SYSTEM MASTER PLAN

EXECUTIVE SUMMARY

Miami-Dade County is facing the same population growth issues as many other metropolitan areas, a diminished quality of life, increased congestion, declining recreation and conservation open space, visual blight, limited transportation options and social inequities. With the population expected to increase by three million residents in the year 2025 and up to 4.5 million by 2060, additional pressure will be placed on an already stressed physical, social, and economic environment.

This Park and Open Space System Master Plan envisions that great parks, public spaces, natural and cultural areas, streets, greenways, blueways, and trails can form the framework for a more sustainable community. Such a plan for the public realm cannot be considered as an isolated system, but one that is integrated into the overall fabric of the community and one that will create the kind of place where residents want to live, employers want to do business, and tourists want to visit.

The goal of this Master Planning process is to “create a seamless, sustainable system of parks, recreation and conservation open spaces for this and future generations.”

VISION

GREAT PARKS are for everyone, and should provide a diverse and balanced system of active and passive recreational opportunities. The County's Vision is that residents of every neighborhood, urban, suburban, rural, incorporated and unincorporated, have equal access to places to walk, to exercise, to socialize and to engage in a healthy, active lifestyle.

GREAT PUBLIC SPACES often define the great cities of the world. As Miami-Dade County develops more densely, there will be a need for great, attractive, usable public spaces that provide an opportunity for meaningful recreation experiences. These can be anything from neighborhood plazas to great waterfront vistas and promenades.

There is especially great potential for new transit station parks/urban plazas that would serve as the central gathering places for transit oriented developments (TODs). These public spaces could have a small service area radius of about one quarter of a mile, and serve local residents' needs for walking, meeting, informal play, and special events. Not only would they provide another outlet for recreation and social interaction, transit-oriented parks would also act as a place-maker and a form-giver to TODs.

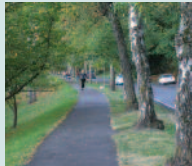
GREAT NATURAL AND CULTURAL PLACES can be celebrated in a system of Zones (clusters of Environmentally Endangered Lands and Cultural Resource Centers) that: provide a variety of education activities and programs; elevate the public's appreciation and understanding of the County's natural ecosystems and cultural amenities; engage the surrounding neighborhoods; and link the sites with the other elements of the open space system through streets, greenways, and water trails.

GREAT GREENWAYS TRAILS AND WATER TRAILS can form an interconnected system that: provides transportation alternatives and reduces traffic congestion; creates new recreational opportunities; increases property values; protects natural resources; and encourages tourism and business development. These trails strengthen connections across the County, from Broward to Monroe Counties, from the Atlantic Ocean to the Everglades.

GREAT STREETS can be created through the redevelopment of existing arterial and collector roads to: create urban form and identity; improve aesthetics; provide for bicycle/pedestrian safety and comfort; and to improve the social, physical and economic environment for land uses along the corridors. To facilitate the creation of great streets, Miami-Dade County must move beyond vehicular performance-based street design and instead design streets that are defined by their role in the community. While all streets should have a minimum level of accessibility to all modes of transportation, not all streets require the same details.

great places have great spaces

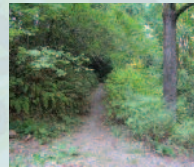
SEATTLE



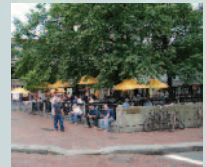
CHICAGO



VANCOUVER



BOSTON



Parks are accessible to everyone regardless of age or ability

Public spaces are designed to engage residents

Natural and cultural areas are planned and managed to balance access and resource protection

Greenways, blueways, and trails connect every resident to places throughout the community

Streets are designed as linear parks

PRINCIPLES

EQUITY - Every resident should be able to enjoy the same quality of public facilities and services regardless of income, age, race, ability or geographic location.

ACCESS - Every resident should be able to safely and comfortably walk, bicycle, drive and/or ride transit from their home to work, school, parks, shopping and community facilities.

BEAUTY - Every public space, including streets, parks, plazas and civic buildings, should be designed to be as aesthetically pleasing as possible, and to complement the natural and cultural landscape.

MULTIPLE BENEFITS - Every single public action should generate multiple public benefits to maximize taxpayer dollars.

SEAMLESSNESS - Every element of the County, including neighborhoods, parks, natural areas, streets, civic centers and commercial areas, should be connected without regard to jurisdiction.

SUSTAINABILITY - Every action and improvement of the Park System, including facilities, programs, operations and management, should contribute to the economic, social and environmental prosperity of the County.

Following these principles, Miami-Dade County can expand its Parks and Open Space System to form the foundation and framework for a seamless, livable and sustainable community. Imagine a future Miami-Dade County where:

- Every resident in the County can walk (within 5 minutes) to a central neighborhood park and civic space for picnics, special events, informal play and socialization.
- Every resident can safely and comfortably walk, bicycle, or take transit to community parks, recreation centers and special use/sports facilities.
- Parks provide for a balance of active and passive uses.
- The County Parks Department works with every municipality and the School District to provide public access to schools, city parks, and County recreation areas.
- Equitable public access is provided to lakes, beaches, and other major natural features.
- Conservation areas and critical habitat are protected from over-use and negative impacts.
- An interconnected network of shaded and safe bikeways and trails connect to parks, neighborhoods, schools, employment centers, civic buildings, and other community destinations.
- Existing streets are transformed into tree-lined boulevards and parkways that define the County's urban form.
- Bus transit is provided to every park and civic site.
- Public art, signage and cultural/historical exhibits are integrated into every park and public realm/infrastructure project to "tell the County's story" and to create a sense of place.
- The County's significant cultural and historical sites are protected, maintained, and promoted.
- Park improvements are used as catalysts for neighborhood stabilization and/or redevelopment.
- Parks are designed to reduce energy and water consumption, and to serve as models for sustainable development County-wide.
- Parks are designed to be flexible in order to accommodate ever-changing recreation trends and demographics.
- Residents of surrounding neighborhoods are engaged in the planning and design of each park.

Map Legend

- Urban Development Boundary
- Great Streets
- Roadway
- Parkway
- Greenways & Water Trails
- Bike Trail
- Village Trail
- Parks & Public Spaces
- Existing County Park
- Existing Municipal Park
- Proposed Walk-In Park with 10 Mile Service Area
- Proposed Transit Station Park with 10 Mile Service Area
- Proposed Community Sport Center with 2.5 Mile Service Area
- Proposed Regional Sports Complex with 6 Mile Service Area
- Proposed Shopping Plaza with 6 Mile Service Area
- Proposed Neighborhood & Community Center
- Proposed Regional Center with 6 Mile Service Area
- Proposed Regional Office Center with 6 Mile Service Area
- Cultural Center
- Historical Preservation Site
- Literary
- School
- College Institution
- Urban Center
- Government Building
- Water Access
- Beach
- Boating Access
- Canner/Kayak Access
- Fishing Access
- Swimming/Fishing
- Environmental & Endangered Lands
- Eco Zone
- NAT Site

MIAMI-DADE PARKS, RECREATION AND OPEN SPACES DEPARTMENT

Proudly Presents the 2012 Park Heritage Awards

William Lyman Phillips Award

**U.S. NATIONAL PARK SERVICE
BISCAYNE NATIONAL PARK**

**U.S. NATIONAL PARK SERVICE
EVERGLADES NATIONAL PARK**

"FOR EXCELLENCE IN PARK, RECREATION, AND CONSERVATION OPEN SPACE PLANNING AND DESIGN IN MIAMI-DADE COUNTY"

William J. Matheson Award

**THE SPEEDWELL FOUNDATION
JENNY AND MICHAEL MESSNER, TRUSTEES**

"FOR OUTSTANDING CONTRIBUTION BY AN INDIVIDUAL, FOUNDATION, OR BUSINESS ENTITY TO THE PARK, RECREATION, AND CONSERVATION OPEN SPACE FIELD THROUGH SPONSORSHIP, PHILANTHROPY, OR DEVELOPMENT IN MIAMI-DADE COUNTY"

A.D. "Doug" Barnes Award

**DR. BARBARA FALSEY, PRESIDENT
URBAN ENVIRONMENT LEAGUE**

"FOR OUTSTANDING VOLUNTARY CONTRIBUTION BY AN INDIVIDUAL OR ORGANIZATION OF TIME AND EFFORT TO IMPROVE THE QUALITY AND QUANTITY OF PARK, RECREATION, AND CONSERVATION OPEN SPACE OPPORTUNITIES IN MIAMI-DADE COUNTY"

Charles H. Crandon Award

**HONORABLE MATTI HERRERA BOWER, MAYOR
CITY OF MIAMI BEACH**

"FOR OUTSTANDING EFFORT BY AN ELECTED OFFICIAL TO INCREASE PARK, RECREATION, AND CONSERVATION OPEN SPACE OPPORTUNITIES FOR THE RESIDENTS AND VISITORS OF MIAMI-DADE COUNTY"

C.W. "Chuck" Pezoldt Award

THE CHILDREN'S TRUST

"FOR OUTSTANDING COMMUNITY SERVICE BY AN INDIVIDUAL OR ORGANIZATION TO IMPROVE THE QUALITY AND QUANTITY OF YOUTH RECREATION OPPORTUNITIES IN MIAMI-DADE COUNTY"

THE SPEEDWELL FOUNDATION

“Urban parks play a vital role in the social, economic and physical well-being of a city’s residents. People who live near parks have more ways to walk, run, and play do other heart healthy activities. Parks preserve regional ecosystems amid growing cities. Well-maintained parks promote community engagement and civic pride.”

Michael Messner, The Speedwell Foundation

Miami-Dade County (MDTV)

Presents

The Olmsted Legacy: America’s Urban Parks A Film by Rebecca Messner

151 years after Frederick Law Olmsted designed New York City’s Central Park with Calvert Vaux, it remains an undisputed haven of tranquility amidst one of the largest, tallest, and most unnatural places on earth. *Olmsted and America’s Urban Parks*, a one hour documentary, examines the formation of America’s first great city parks in the late 19th century through the enigmatic eyes of Frederick Law Olmsted (1822 – 1903), visionary urban planner and landscape architect. The film features Academy Award winning actor Kevin Kline as the voice of Frederick Law Olmsted.

Miami-Dade County “Red fields to Green fields” Solving the Real Estate Crisis

A 12 minute video describing the strategies developed by the Miami-Dade Parks, Recreation and Open Spaces Department to reverse the damaging effects of Miami-Dade’s bighted real estate to develop a stirring, interconnected community that is equipped to handle and embrace change. Thousands of acres of under-capitalized, stalled and abandoned residential and commercial real estate assets can be rescued and restored through public park planning to become dynamic catalysts for enhancing economic, environmental and physical health. A richer, encouraging future for Miami-Dade and its residents is achievable by converting red fields to green fields.

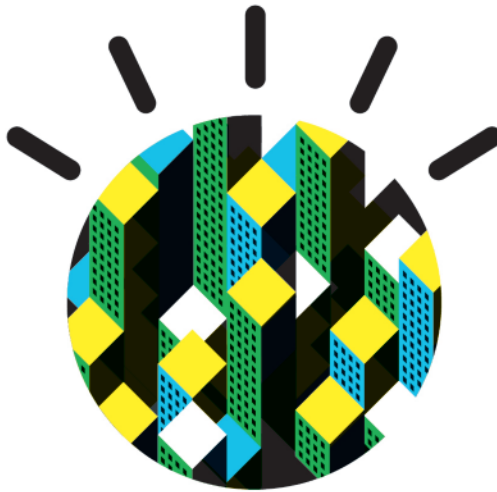
Please Check Scheduled Dates and Air Times through April 2012

AvMed Health Plans,
proud sponsor of the
Miami-Dade County Great Park Summit...



**...and the important role parks play in
creating healthier, more
vibrant communities.**

AvMED
HEALTH PLANS



Welcome to the decade of smart.

A few years ago, we began a global conversation about how our planet can become smarter.

Today, the signs of a Smarter Planet are all around us. Smarter systems are creating value in every major industry and across every region of both the developed and developing worlds.

Intelligence is being infused into the systems and processes that make the world work—into things no one would recognize as computers: cars, appliances, roadways, power grids, clothes, even natural systems such as agriculture and waterways.

Trillions of digital devices, connected through the Internet, are producing a vast ocean of data. And that information can now be turned into knowledge because we have the computational power and advanced analytics to make sense of it all.

In a study of 439 cities, those with transportation congestion systems reduced average travel delays by more than 700,000 hours annually.

Eight hospitals and 470 primary care clinics improved clinical results and operational efficiency by up to 10% through information access at the point of care.

Leading retailers reduced supply chain costs by up to 30% and increased sales by up to 10%.

With sophisticated mathematical models, we can actually begin to predict and react to changes in our systems. New York has smart crime fighting. Galway has smart water. A smart grid in Copenhagen keeps energy flowing.

We've learned a lot over the past few years about what it takes to build a smarter planet. We've also learned about the issues it raises—like protecting personal information and securing critical infrastructures.

The good news is that business leaders, policymakers and government officials around the world are stepping up to these challenges. Above all, they realize that we cannot let this moment pass. The time to act is now, and the way to act is together. The decade of smart is under way.

Let's build a Smarter Planet. Join us at ibm.com/smartercities

Thank you Miami-Dade County Parks, Recreation, and Open Spaces.



P&G



WORLDWIDE PARTNER



*The London 2012 Olympic Games
uses P&G Professional products to
clean over 170 venues a day.*



Procter & Gamble
Professional™

**Spic
Span**

Comet

McClean

High-performing cleaning products helping you stay at the top of your game.

www.pgpro.com

around the world. around the store. for you. for the earth.



rooted in organics
since 1980



give new
meaning
to cleaning



bloomin' responsible



coloring
the world
sustainable



no plastic bags
at checkout



Premium Body Care™
—the best there is.

Earth Day • April 22nd

Aventura • Boca Raton • Coral Gables • Coral Springs • Ft Lauderdale • Jacksonville • Naples • Palm Beach Gardens
Pembroke Pines • Phillips Crossing • Pinecrest • Plantation • Sarasota • South Beach • Tampa • Wellington • Winter Park

Coming Soon!

Carrollwood • North Miami • Tallahassee • Downtown Miami

wholefoodsmarket.com





Come experience Miami's cosmopolitan side with casual elegance, a sophisticated vibe and magnificent views high above Biscayne Bay.

Savor Peruvian cuisine and poolside cocktails at our bayview award-winning restaurant. Plus, breezy and modern guestrooms and suites, contemporary decor, all in a casual Miami neighborhood.



SONESTA BAYFRONT HOTEL

COCONUT GROVE

Miami, Florida

2889 McFarlane Road | Coconut Grove, Florida 33133

305.529.2828 Sonesta.com



Preview this month's specials on your smart phone with a QR Code reader app. Scan this QR code with your camera and it will directly link you to Sonesta mobile content.



REP SERVICES, INC.

*Helping create great places for people
people in a Fun, Sustainable and Honorable way.*

www.repservices.com ■ 407.831.9658 ■ sales@repservices.com

**MORE EXPERTS,
THINKING
MORE
INNOVATIVELY,
DESIGNING
MORE
INTELLIGENTLY,
MANAGING
MORE
PRODUCTIVELY,
PARTNERING
MORE
POWERFULLY.**

www.aecom.com



AECOM



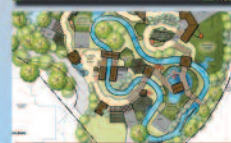
**ROSENBERG
GARDNER
DESIGN**



LANDSCAPE ARCHITECTURE & LAND PLANNING

URS

*Master Planning
Recreational Design
Architecture
Landscape
Engineering
Civil*



7650 Corporate Center Drive,
Phone: (305) 884-8900

Suite 400,
Fax: (305) 884-2665

Miami, FL 33126
www.urscorp.com



Shaping the Future

Working in a sustainable way

- Project Management
- Environmental
- Energy
- Design/Build
- Water Resources
- Municipal Services
- Industrial Services
- Site Development/
Planning Services
- Subsurface Utilities
Engineering (SUE)
- Transportation



www.amec.com

ATKINS

**We're bringing more
to your park projects**



Plan Design Enable

800.477.7275

www.atkinsglobal.com/northamerica



Just Energy is proud to be...
the carbon offset sponsor of the
2012 Great Parks Summit

Together we are creating a cleaner, greener world.



Visit us at www.justcleancommunity.com

The
2012 Great Park Summit
is a carbon neutral event.
Carbon emissions produced
by the Summit have been
offset by an investment made
by Just Energy in the
JB Hunt Intermodal
Transportation Project.



gilly
V E N D I N G

www.gillyvending.com
305-620-8081

WE GO WHERE NO OTHER VENDING COMPANY HAS GONE BEFORE

The advertisement features a central image of an astronaut in a white spacesuit floating in space, with the Earth's horizon visible in the background. The astronaut's helmet visor reflects a Gilly Vending machine. To the left of the astronaut, a variety of snack bags are displayed, including Luna Cakes, Luna Bars, Clif Bars, Clif Builder's, Clif Bloks, and Clif Shot. The Gilly Vending logo is visible on the astronaut's chest.



EcoAdventures™

MIAMI-DADE
COUNTY

**LIVEa
PARK
LIFE**

@ Miami-Dade Parks

www.miamidade.gov/parks

The advertisement features a background image of a person fishing from a red kayak on the ocean at sunset. The person is wearing a hat and a life vest. The text is overlaid on the image, with the EcoAdventures logo in the top left, the Miami-Dade County logo below it, and the 'LIVEa PARK LIFE' text in large, bold letters on the right. The '@ Miami-Dade Parks' text and the website URL are at the bottom right.

OUR PARTNERS

University of Miami

The University of Miami and its various fields of study has been a longtime partner with Miami-Dade Parks, Recreation and Open Spaces Department providing valuable services to its programming. Through the University of Miami Health System (U-Health), the UM Miller School of Medicine, and the Department of Pediatrics, Miami-Dade Parks continues its fight against childhood obesity through its Fit-to-Play Out-of-School program and its Fit-to-Play, Green-it-Up summer camp program. The UHealth Department of Pediatrics provides valuable support to the Parks' after-school program by analyzing pre-and post-program biometrics of each child enrolled, to determine the child's progress in his/her fitness, health and wellness levels. The UM Miller School of Medicine each year provides Miami-Dade Parks' Fit-to-Play, Green-it-Up summer camp program with five UHealth mini clinics, staffed by UM medical students offering enrolled children with lessons on stress management, sun protection, staying fit with exercise, good nutrition, and tobacco prevention. UHealth also provides U-Health nylon back-packs containing health information to each child, as well as other mementos, such as coloring books, crayons, stress balls and UV-sensitive beads that change color when exposed to ultra-violet light from the sun. The University of Miami School of Architecture plays a key role in the implementation of the Red Fields to Green Fields strategies through an on-going partnership with the Parks Department. The School is nationally and internationally recognized for faculty and student leadership and the focus on the community as a place of beauty, health and livability.



Parks Foundation of Miami-Dade

The Parks Foundation of Miami-Dade was founded in 2004 as a 501 c 3 non-profit corporation. The mission of the Foundation is to support Miami-Dade County Park and Recreation programs and projects to build a world-class parks system for residents and visitors alike. Funds are used for recreation scholarships, cultural initiatives, parks and facilities improvements, land acquisition and for preserving parks and green space.



Health Foundation of South Florida

Health Foundation of South Florida improves the health of people in Broward, Miami-Dade and Monroe Counties through grant making and philanthropic leadership. Since 1993, the Foundation awarded more than \$93 million to public and nonprofit organizations focused on healthy eating active communities, preventive screenings, primary care and oral health.

Recognizing that poor diet and physical inactivity are a leading cause of death in the United States and a major cause of chronic diseases such as obesity, diabetes and heart disease, the Foundation has prioritized the promotion of healthy eating behaviors and active lifestyles. To build healthy communities, all residents need equitable access to healthy foods and physical activity opportunities.

The goal is to create environments that are supportive of healthy lifestyles through the implementation of evidence based programs and organizational, environmental and policy changes. The Foundation's vision is one where all neighborhoods, child care centers, schools, after-school programs and workplaces offer healthy food and safe places to be physically active.

Health Foundation of South Florida actively seeks community partners to leverage resources and maximize our collective impact. If you are part of an effort to improve health for residents in Broward, Miami-Dade or Monroe Counties, please contact us at 305.374.7200. Let's make working together to improve health as easy as a walk in the park.



MAKE HEALTHY HAPPEN MIAMI

From healthy communities come healthy people.
Look for walking paths and bicycle routes in Miami-Dade County!



Log on to makehealthyhappenmiami.com to find out how.

Made possible with funding from the Department of Health and Human Services



MIAMI-DADE PARKS, RECREATION AND OPEN SPACES DEPARTMENT

Nationally accredited by the Commission of Accreditation of Parks and Recreation Agencies, a three-time winner of the NRPA National Gold Medal Award and winner of the 2009 Florida Governor's Sterling Award for excellence in management and operations, Miami-Dade Parks is one of the largest park systems in the United States. Its mission is to create outstanding recreational, natural and cultural experiences that enrich residents and enhance the quality of life in Miami-Dade County. In 2012, the Department has undertaken the Public Works functions of maintaining rights-of-way, including mowing and landscaping cycles, installation of landscaping, urban forestry, and support of the Miami-Dade County Community Image Advisory Board. It is keenly focused on developing partnerships, principles and projects that support the sustainable beautification and greening of Miami-Dade County through scenic vistas, tree lined streets, lush landscaping in high-traffic areas and popular destinations, and livable neighborhoods that reflect a world class image of Miami-Dade County as a sub-tropical paradise.

Miami-Dade Parks manages more than 12,825 acres of land, half of which are environmentally sensitive or threatened natural areas requiring protection and conservation, and it maintains more than 260 parks, including recreation facilities and greenway areas to provide essential quality-of-life services to a resident population of 2.5 million people.

Renowned for its diversity of parks, facilities and programmatic offerings, the Miami-Dade Parks system is made up of more than just playgrounds and athletic fields, it is also comprised of health and fitness programs for kids and adults; recreation programs for seniors and people with disabilities; out-of-school and year round camp programs; educational nature centers, nature preserves and EcoAdventures™ eco tourism programs; environmental restoration; cultural arts programs and events; the renowned Zoo Miami and the Deering Estate at Cutler; the Crandon Tennis Center, home of the Sony Ericsson Open; golf courses; beaches; marinas; campgrounds; pools; and more. It is truly one of the most unique park and recreation systems in the world. The Miami-Dade Parks, Recreation and Open Spaces Department is currently implementing the Miami-Dade County Park & Open Space System Master Plan, a 50-year, unifying vision for a livable, sustainable community. The Department is the author of the plan, which it published in 2007.

Learn more about Miami-Dade Parks at www.miamidade.gov/parks.

FAIRCHILD TROPICAL BOTANIC GARDEN

Fairchild Tropical Botanic Garden is dedicated to exploring, explaining and conserving the world of tropical plants. It is one of the premier conservation and education-based gardens in the world and a recognized international leader in both Florida and international conservation. Fairchild has field programs in over 20 countries throughout the tropical world including the Indonesia, South America, the Caribbean, Africa and Southeast Asia. Fairchild's palm and cycad collections are considered the greatest collections in the world and are nationally recognized by the American Public Gardens Association. Fairchild has the largest education program in a metropolitan area reaching more than 100,000 schoolchildren in 2011. Fairchild hosts popular events like the Chocolate, Mango, Orchid, Food and Garden, Ramble and Edible Garden Festivals, as well as an annual art exhibition, concerts, plant shows and sales, evening events and more. Fairchild is a not-for-profit organization with 45,000 members. Fairchild is located at 10901 Old Cutler Road, Coral Gables, Florida, 33156. Admission is \$25 for adults, \$18 for seniors, \$12 for children 6-17 and free to children 5 and under and Fairchild members. Information at www.fairchildgarden.org and on Facebook and Twitter.



MIAMI-DADE COUNTY

Carlos A. Gimenez

Mayor

BOARD OF COUNTY COMMISSIONERS

Joe A. Martínez *Chairman*

Audrey M. Edmonson *Vice Chairwoman*

Barbara J. Jordan

District 1

Jean Monestime

District 2

Audrey M. Edmonson

District 3

Sally A. Heyman

District 4

Bruno A. Barreiro

District 5

Rebeca Sosa

District 6

Xavier L. Suarez

District 7

Lynda Bell

District 8

Dennis C. Moss

District 9

Sen. Javier D. Souto

District 10

Joe A. Martínez

District 11

José “Pepe” Díaz

District 12

Esteban Bovo, Jr.

District 13

Harvey Ruvin

Clerk of Courts

Pedro J. García

Property Appraiser

Alina T. Hudak

County Manager

Robert A. Cuevas, Jr.

County Attorney

Miami-Dade County provides equal access and equal opportunity in employment and services and does not discriminate on the basis of disability.

“It is the policy of Miami-Dade County to comply with all of the requirements of the Americans with Disabilities Act.”

To request material in accessible format, information on access for persons with disabilities, or sign language interpreter services (7 days in advance), call 305-755-7848.



Great Park Summit



2 0 1 2