



REDISTRICTING 2021

MIAMI-DADE COUNTY

ARCBridge Consulting & Training Inc.

www.arcbridge.com

pri@arcbridge.com

7/7/21



Why Redistrict?

- Every 10 years after the Decennial Census, every state, county, city, town, special district must redraw their district boundaries to reflect the changes in population.
- All redistricting must use the Census PL94-171 data and associated Census geography

Redistricting Demographic Data - Census PL94-171 Data

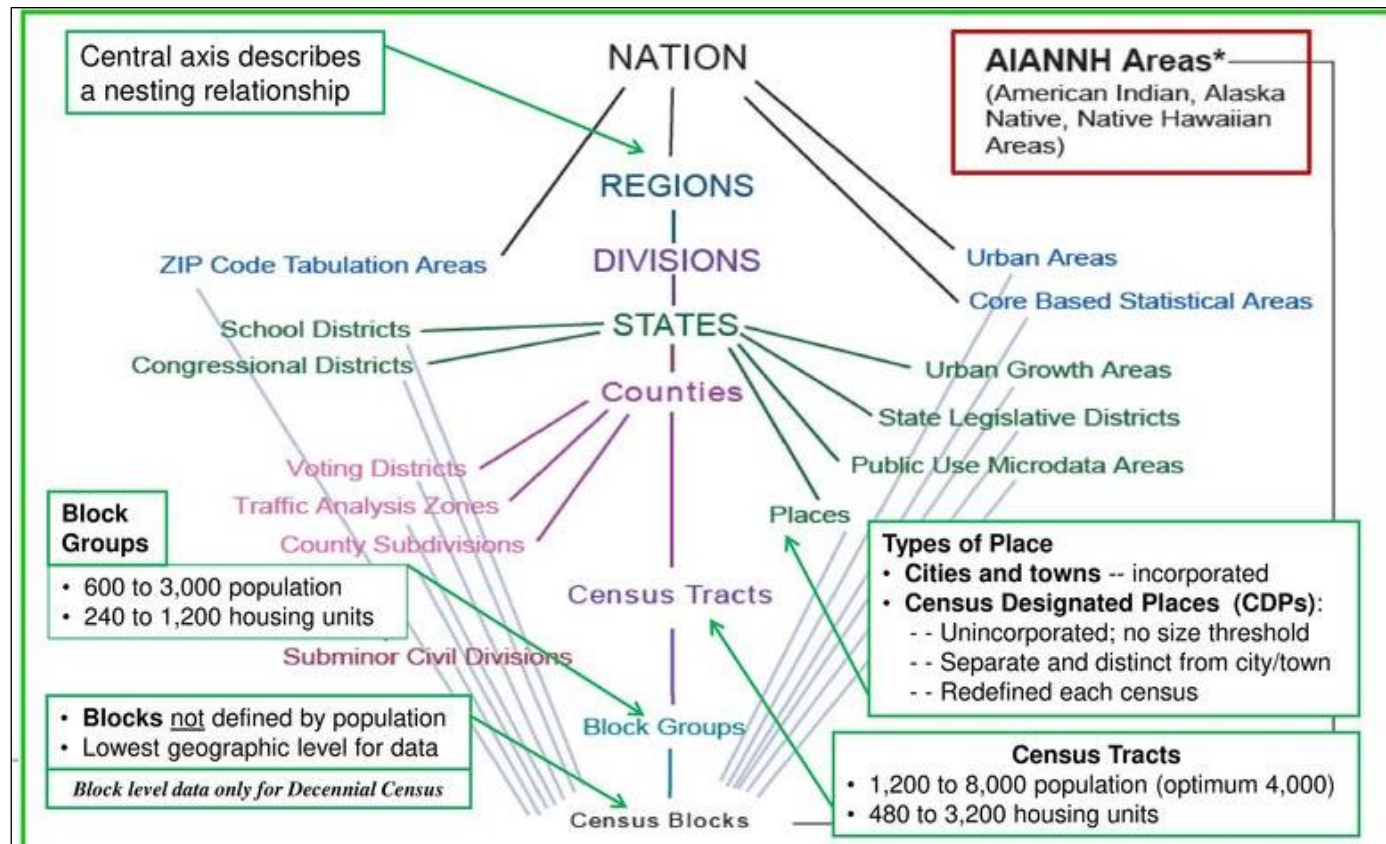
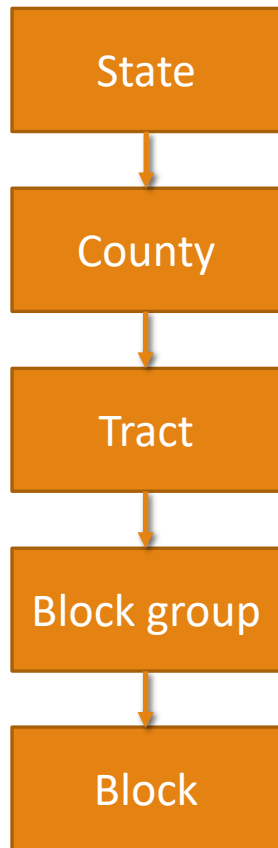
Data to be released by August 16th 2021 in legacy format and user-friendly format in September

- In 1975 PL94-171 was enacted to create the data required for Redistricting
- Bureau of Census Redistricting Office releases this demographic data
- 100% Count of Total Population and Voting Age Population by Race and Ethnicity (Hispanic)
- Data is summarized at various levels of geography
- This year this data release has been delayed due to the pandemic
- The data will be released on September 30th and in August 2021

Process PL94-171 Demographic Data – Race and Ethnicity; Total and VAP

Total	Voting Age Population
Total Population	Total Voting Age Population
Hispanic	Voting Age Hispanic
Non Hispanic White	Voting Age White
Non Hispanic Black	Voting Age Non Hispanic Black
Non Hispanic Asian	Voting Age Non Hispanic Asian
Non Hispanic Hawaiian/Pacific Islander	Voting Age Non Hispanic Hawaiian/Pacific Islander
Non Hispanic Native Americans	Voting Age Non Hispanic Native Americans
Non Hispanic Other	Voting Age Non Hispanic Other
Non Hispanic Persons of 2 or more Races	Voting Age Non Hispanic Persons of 2 or more Races

Redistricting Spatial Data - Census Geographies



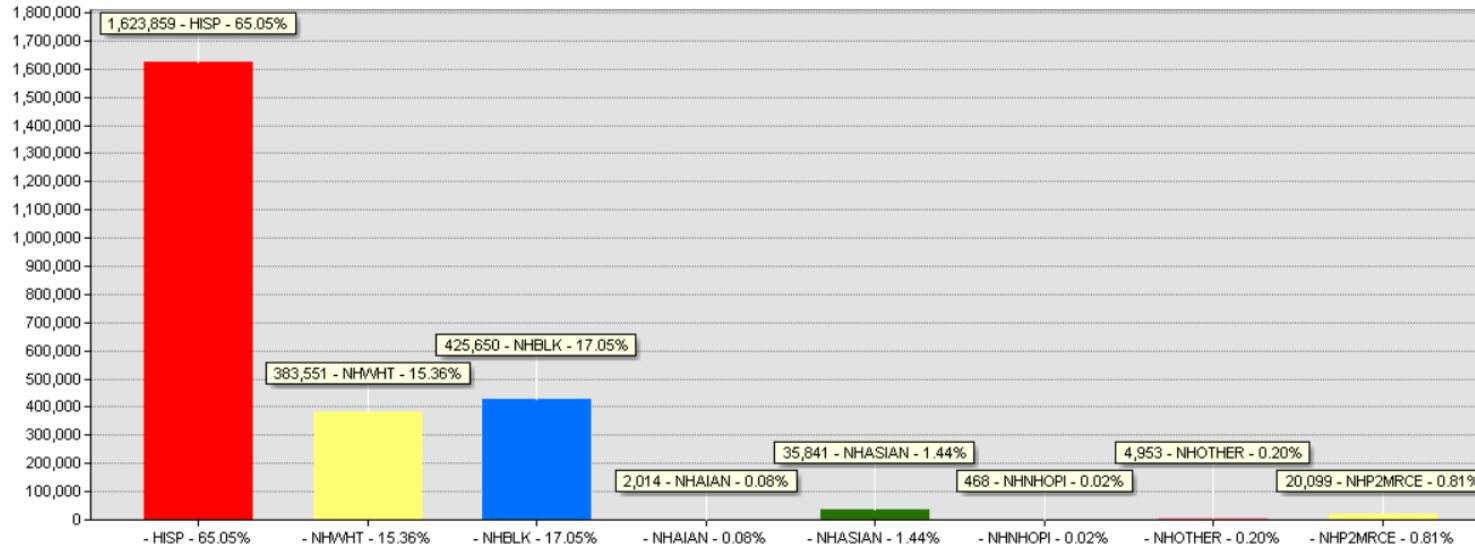
This data is ready

Redistricting Requirements

- Equal Population – as equal as possible
- create districts that have a total population deviation of no more than 10% between their most heavily populated district and the least populated district.
- Compact
- Contiguous
- Minorities are fairly represented
- Communities of Interest

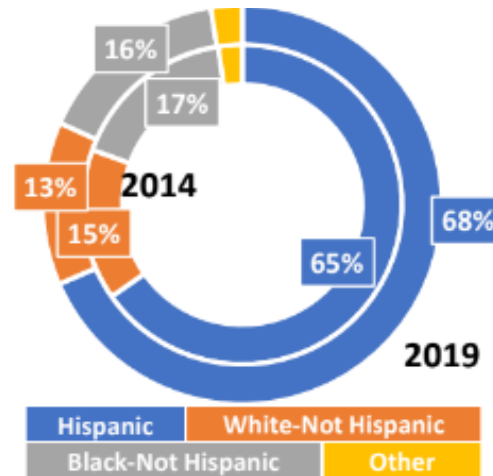
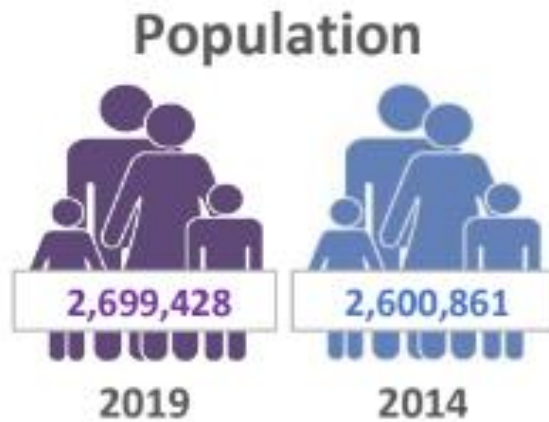
2010 PL94-171 Census Data and Estimates from American Community Survey – 2014 and 2019

Demographics: Entire Jurisdiction



2010 Population - 2,496,435

HISP:	1,623,859	65.05%
NHWHT:	383,551	15.36%
NHBLK:	425,650	17.05%
NHAIAN:	2,014	0.08%
NHASIAN:	35,841	1.44%
NHNHOPI:	468	0.02%
NHOTHER:	4,953	0.20%
NHP2MRCE:	20,099	0.81%



- Estimated increase in Total Pop - 202,993
- Increase in Hispanic Population by 3%
- Decrease in NH Black Population by 1%
- Decrease in NH White Population by 2%

DISTRICT DEMOGRAPHICS

	1	2	3	4	5	6	7
Oliver Gilbert	Jean Monestime	Keon Hardemon	Sally A. Heyman	Eileen Higgins	Rebeca Sosa	Raquel A. Regalado	
Population: 183,731	Population: 183,193	Population: 183,661	Population: 185,014	Population: 201,477	Population: 188,131	Population: 201,108	
Optimum: 192,033	Optimum: 192,033	Optimum: 192,033	Optimum: 192,033	Optimum: 192,033	Optimum: 192,033	Optimum: 192,033	
Deviation: 8,302	Deviation: 8,840	Deviation: 8,372	Deviation: 7,019	Deviation: 9,444	Deviation: 3,902	Deviation: 9,075	
-4.32%	-4.60%	-4.36%	-3.66%	4.92%	-2.03%	4.73%	
HISP: 65,088	HISP: 60,646	HISP: 71,533	HISP: 81,343	HISP: 155,734	HISP: 167,101	HISP: 119,104	
35.43%	33.10%	38.95%	43.97%	77.30%	88.82%	59.22%	
NHWHT: 10,328	NHWHT: 9,316	NHWHT: 19,686	NHWHT: 80,378	NHWHT: 37,676	NHWHT: 18,150	NHWHT: 65,467	
5.62%	5.09%	10.72%	43.44%	18.70%	9.65%	32.55%	
NHBLK: 103,838	NHBLK: 107,999	NHBLK: 87,717	NHBLK: 16,478	NHBLK: 3,690	NHBLK: 1,013	NHBLK: 8,856	
56.52%	58.95%	47.76%	8.91%	1.83%	0.54%	4.40%	
NHAIAN: 238	NHAIAN: 266	NHAIAN: 303	NHAIAN: 173	NHAIAN: 166	NHAIAN: 64	NHAIAN: 98	
0.13%	0.15%	0.16%	0.09%	0.08%	0.03%	0.05%	
NHASIAN: 1,810	NHASIAN: 1,859	NHASIAN: 1,667	NHASIAN: 3,898	NHASIAN: 2,536	NHASIAN: 1,266	NHASIAN: 5,286	
0.99%	1.01%	0.91%	2.11%	1.26%	0.67%	2.63%	
NHNSHOPI: 36	NHNSHOPI: 60	NHNSHOPI: 37	NHNSHOPI: 51	NHNSHOPI: 30	NHNSHOPI: 03	NHNSHOPI: 38	
0.02%	0.03%	0.02%	0.03%	0.01%	0.00%	0.02%	
NHOTHER: 397	NHOTHER: 380	NHOTHER: 395	NHOTHER: 605	NHOTHER: 460	NHOTHER: 135	NHOTHER: 469	
0.22%	0.21%	0.22%	0.33%	0.23%	0.07%	0.23%	

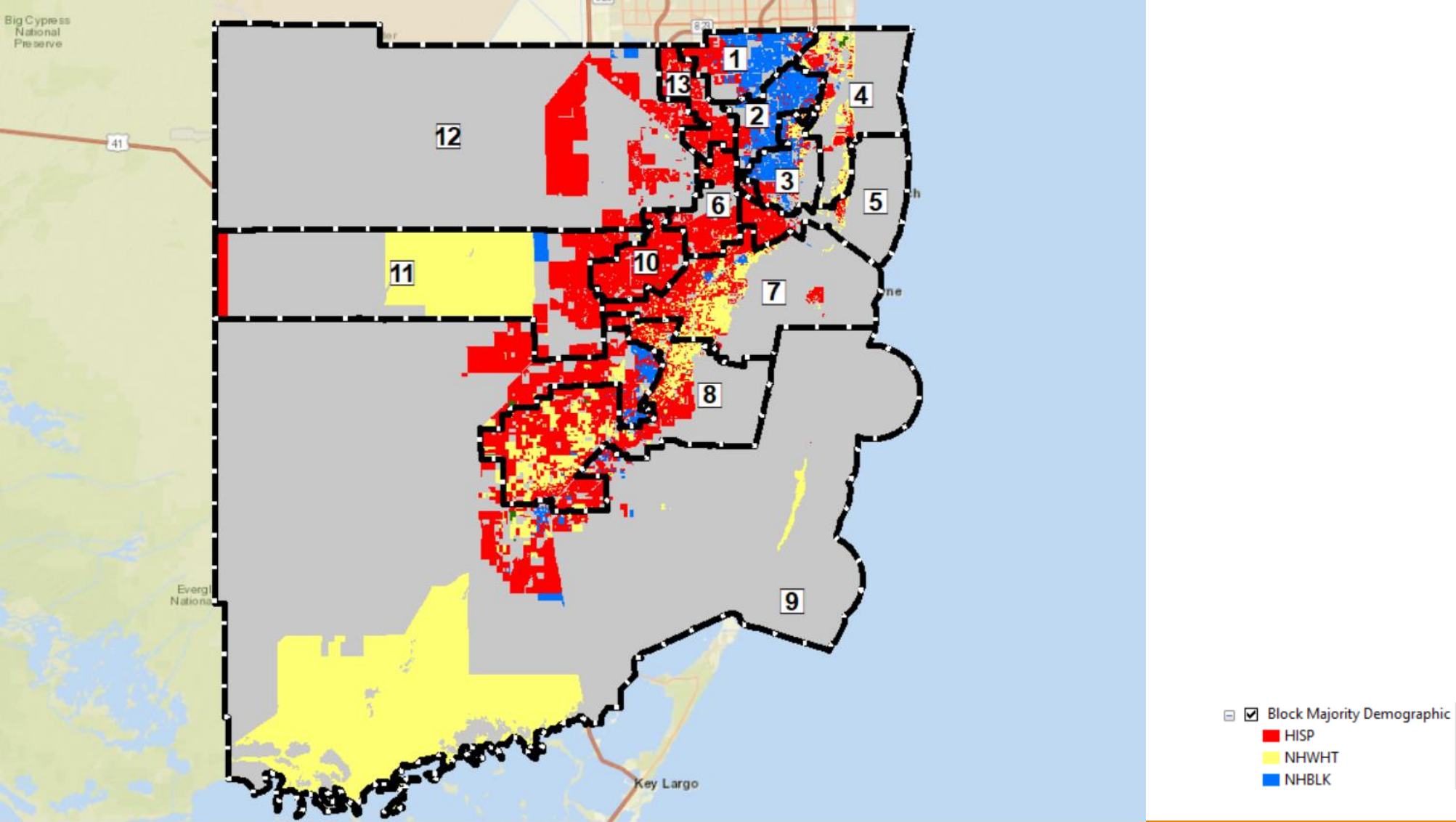
Districts 1-3 are Majority NH Black

Districts 4 – 13 are Majority Hispanic

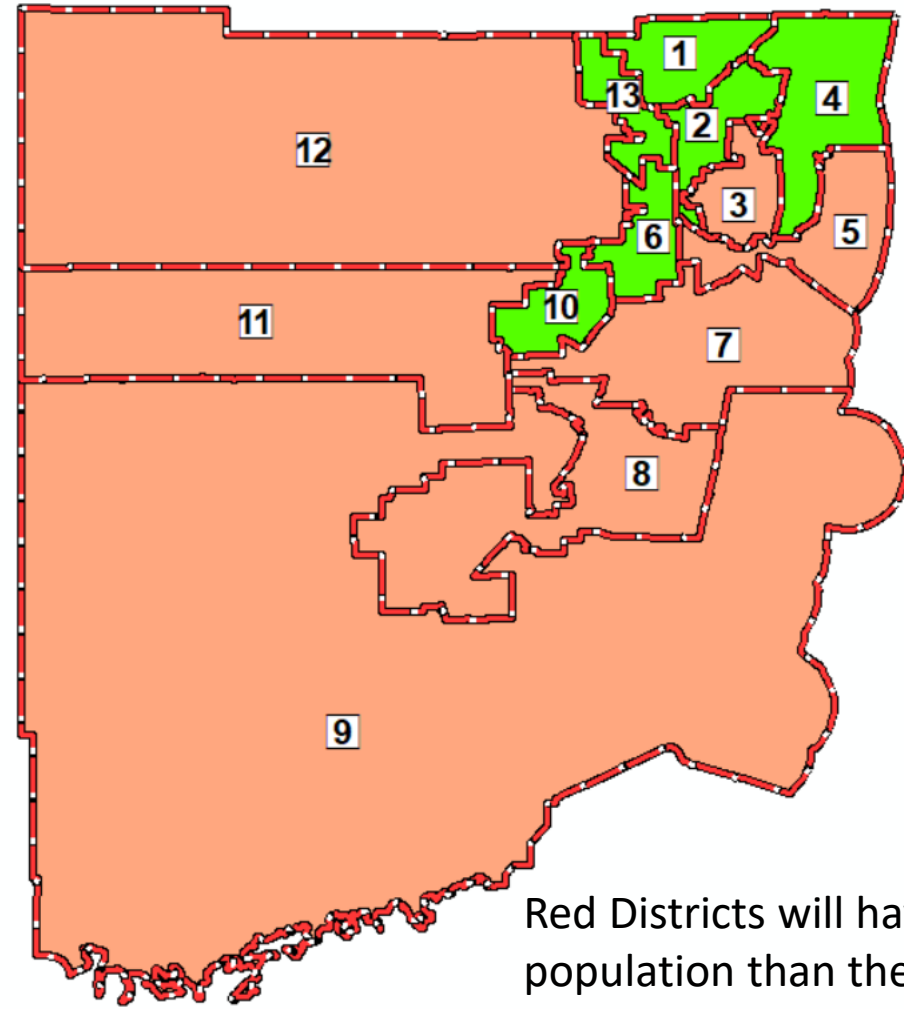
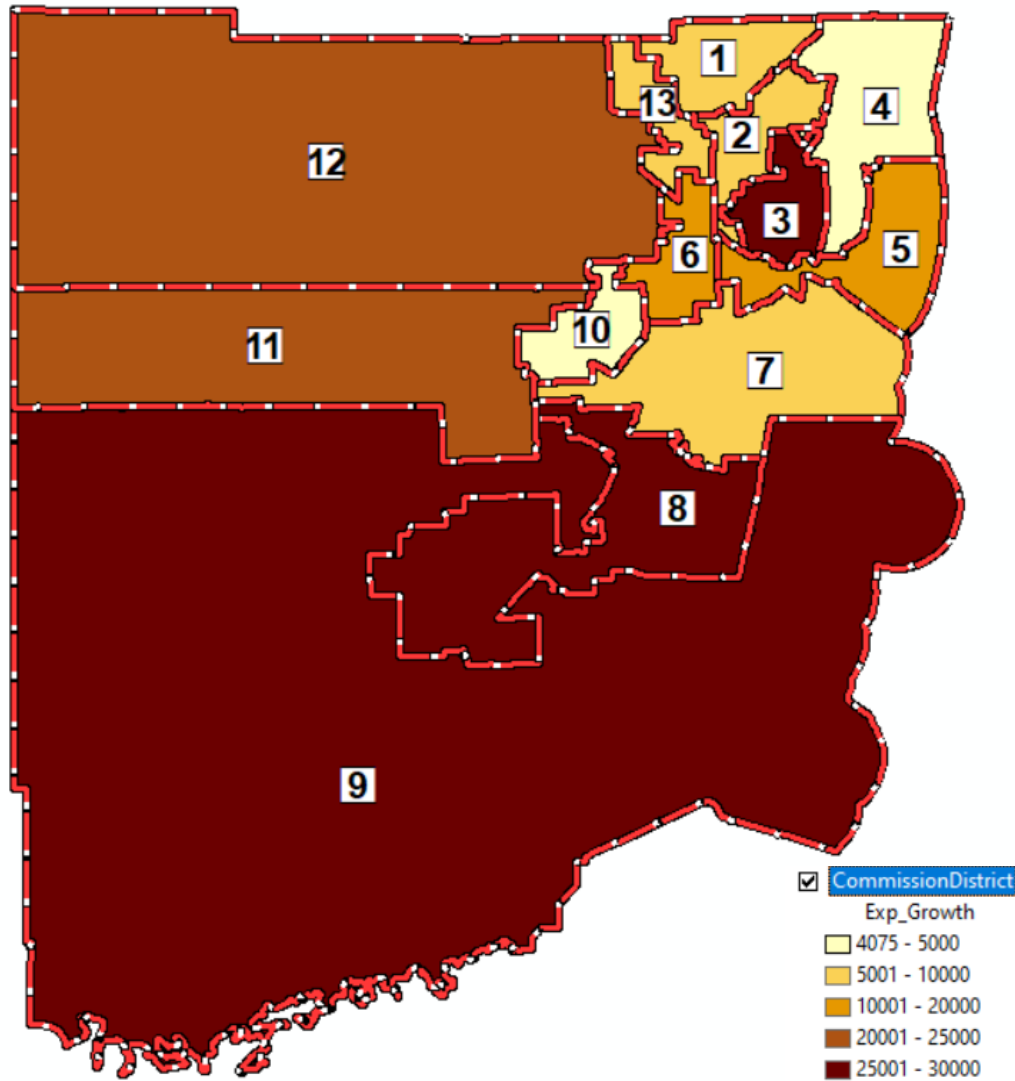
DISTRICT DEMOGRAPHICS

	8	9	10	11	12	13
Danielle Cohen Higgins	Kionne L. McGhee	Sen. Javier D. Souto	Joe A. Martinez	Jose "Pepe" Diaz	René Garcia	
Population: 201,479	Population: 200,399	Population: 190,757	Population: 200,282	Population: 190,789	Population: 186,414	
Optimum: 192,033	Optimum: 192,033	Optimum: 192,033	Optimum: 192,033	Optimum: 192,033	Optimum: 192,033	
Deviation: 9,446 4.92%	Deviation: 8,366 4.36%	Deviation: -1,276 -0.66%	Deviation: 8,249 4.30%	Deviation: -1,244 -0.65%	Deviation: -5,619 -2.93%	
HISP: 118,160 58.65%	HISP: 116,068 57.92%	HISP: 166,999 87.55%	HISP: 166,216 82.99%	HISP: 169,483 88.83%	HISP: 166,384 89.26%	
NHWHT: 53,507 26.56%	NHWHT: 21,325 10.64%	NHWHT: 19,470 10.21%	NHWHT: 21,015 10.49%	NHWHT: 14,043 7.36%	NHWHT: 13,190 7.08%	
NHBLK: 22,283 11.06%	NHBLK: 56,470 28.18%	NHBLK: 1,463 0.77%	NHBLK: 7,217 3.60%	NHBLK: 4,024 2.11%	NHBLK: 4,602 2.47%	
NHAIAN: 196 0.10%	NHAIAN: 230 0.11%	NHAIAN: 47 0.02%	NHAIAN: 121 0.06%	NHAIAN: 52 0.03%	NHAIAN: 60 0.03%	
NHASIAN: 4,196 2.08%	NHASIAN: 3,229 1.61%	NHASIAN: 2,060 1.08%	NHASIAN: 3,994 1.99%	NHASIAN: 2,473 1.30%	NHASIAN: 1,567 0.84%	
NHNHOPI: 128 0.06%	NHNHOPI: 51 0.03%	NHNHOPI: 02 0.00%	NHNHOPI: 22 0.01%	NHNHOPI: 04 0.00%	NHNHOPI: 06 0.00%	
NHOTHER: 595 0.30%	NHOTHER: 614 0.31%	NHOTHER: 182 0.10%	NHOTHER: 347 0.17%	NHOTHER: 208 0.11%	NHOTHER: 166 0.09%	

Distribution of Population by Race and Ethnicity



Expected Growth by Districts based on Census Data and Estimates from American Community Survey – 2014 and 2019



Red Districts will have more population than the ideal population and green would have less

Anticipated Timeline – Completion by Dec 14th 2021

TASK	2021							
	May	June	July	August	September	October	November	December
Initial Meeting with each District Commissioner	Completed							
Citizens Redistricting Advisory Board			Citizens Redistricting Advisory Board					
Release of Redistricting Data (legacy format)				Consultant				
Preparation of Draft Plans (Consultant)				Consultant	Consultant			
Second Meeting with each District Commissioner					Consultant			
Citizens Redistricting Advisory Board					Citizens Redistricting Advisory Board	Citizens Redistricting Advisory Board		
Public Outreach Meetings						Consultant		
Citizens Redistricting Advisory Board (final report)						Citizens Redistricting Advisory Board	Citizens Redistricting Advisory Board	
BCC – First Reading (Redistricting Ordinance)*							BCC	
BCC – Final Action (Redistricting Ordinance)*								BCC

* possible committee review of Redistricting Ordinance between first reading and final action

Completed	
Citizens Redistricting Advisory Board	
Consultant	
BCC	