



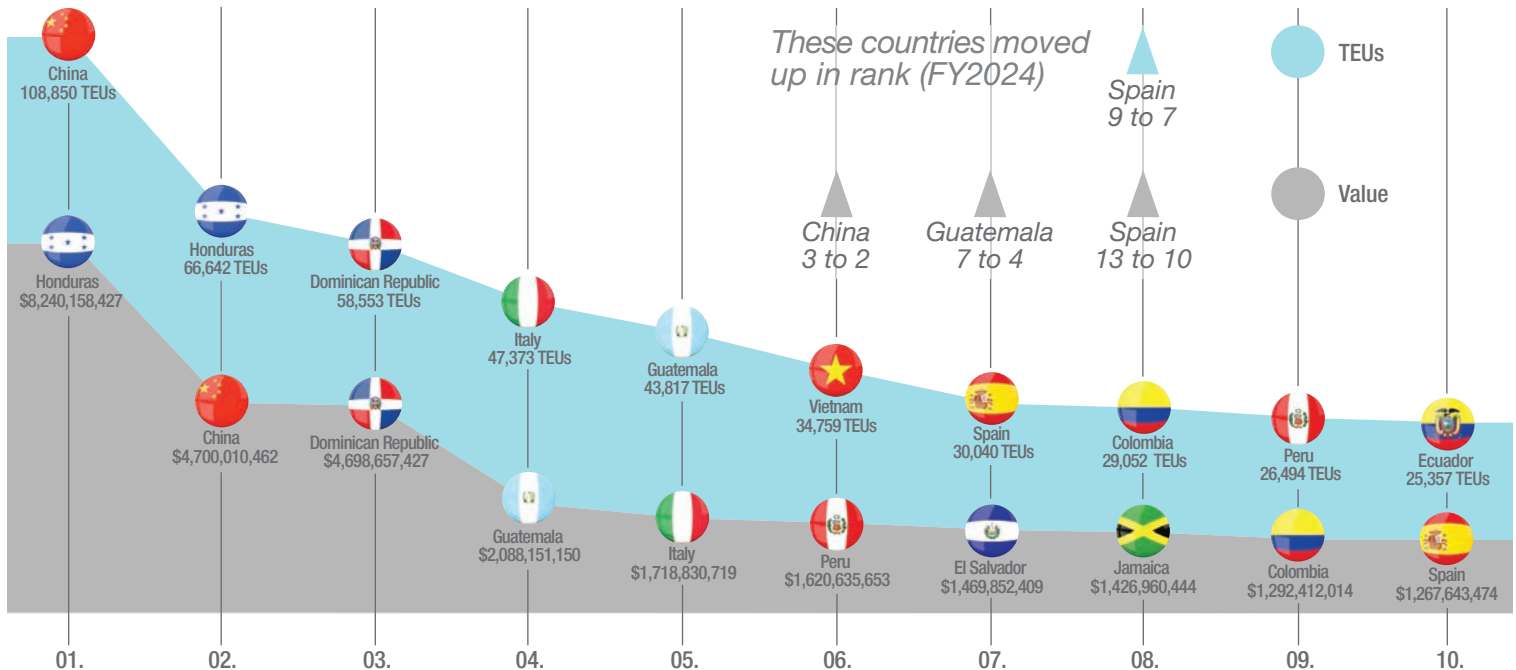
Overall Statistics 2024

PORT MIAMI

Top 10 Trade Partners: Overall

PortMiami's top 10 trade partners represent 420,938 TEUs (63%) with a value of \$27.4 Billion (FY 2024).

Primary regions include: Latin America and the Caribbean, Asia and Europe.



OVERALL CARGO FACTS FY2024

945
Total Cargo Ships Docked

1,089,443
Total TEUs

\$44,393,683,430
Total Value

7,263,395
Total Tonnage

24
Global Services (15 First-Into U.S.)

Top 10 Trade Partners: Imports

	COUNTRY	TEUS
01.	China	107,024
02.	Italy	44,327
03.	Honduras	31,046
04.	▲ Vietnam	29,589
05.	Dominican Republic	28,467
06.	Guatemala	26,783
07.	Spain	24,676
08.	Ecuador	19,925
09.	Peru	17,905
10.	Colombia	16,936

	Country	Value
01.	China	\$4,462,488,767
02.	Dominican Republic	\$3,198,548,077
03.	Honduras	\$2,954,960,279
04.	Italy	\$1,521,379,679
05.	▲ Guatemala	\$1,033,427,167
06.	El Salvador	\$974,196,437
07.	Vietnam	\$884,687,213
08.	Spain	\$776,921,694
09.	Nicaragua	\$745,252,553
10.	Ecuador	\$604,729,052

IMPORTS: 53%

Trade Balance

EXPORTS: 47%

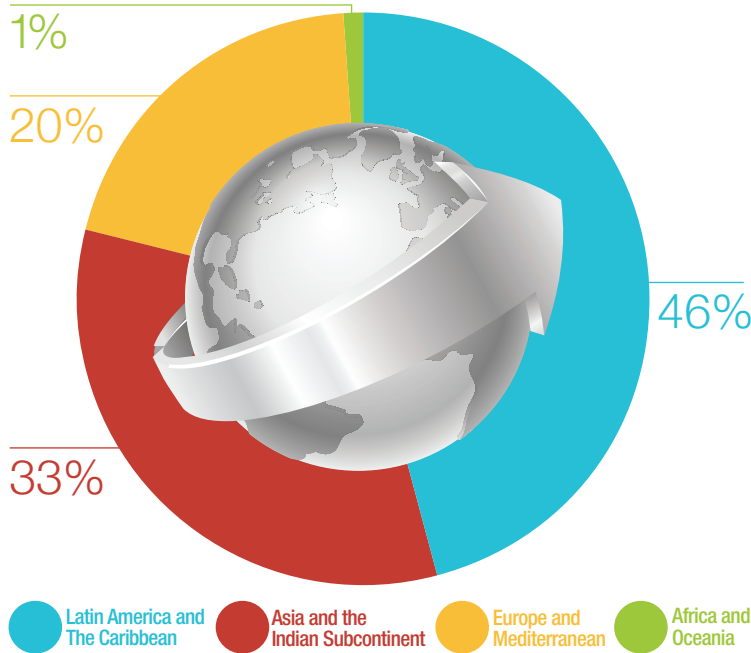
Top 10 Trade Partners: Exports

	COUNTRY	TEUs
01.	Honduras	35,597
02.	Dominican Republic	30,086
03.	Jamaica	19,539
04.	▲ Guatemala	17,034
05.	▲ India	14,373
06.	Colombia	12,116
07.	El Salvador	8,767
08.	Peru	8,590
09.	Panama	8,491
10.	▲ Trinidad and Tobago	5,916

	COUNTRY	VALUE
01.	Honduras	\$5,285,198,148
02.	Dominican Republic	\$1,500,109,350
03.	▲ Jamaica	\$1,233,938,982
04.	▲ Guatemala	\$1,054,723,983
05.	Peru	\$1,018,326,328
06.	Colombia	\$812,875,957
07.	El Salvador	\$495,655,972
08.	▲ Spain	\$490,721,780
09.	Ecuador	\$449,019,584
10.	▲ Trinidad and Tobago	\$419,445,517

Market Share by Region

PortMiami trades with 149 nations. Roughly 50% of all trade is with Latin America and the Caribbean.



Top 10 Commodities: Overall

	COMMODITY	TEUs
01.	Fruit & Vegetables	113,477
02.	Apparel/Textiles	96,196
03.	Machinery	83,810
04.	Furniture	69,065
05.	Iron/Steel/Aluminum	57,982
06.	Plastics/Rubber	52,973
07. ▲	Beverages	45,711
08.	Paper & Products	45,346
09.	Vehicle Parts	40,457
10.	Prepared Foods	37,337

	COMMODITY	VALUE
01. ▲	Apparel/Textiles	\$9,826,660,027
02.	Machinery	\$8,470,036,920
03. ▲	Jewelry	\$4,303,035,713
04. ▲	Fruits and Vegetables	\$2,956,699,475
05. ▲	Plastics/Rubber	\$1,696,453,922
06.	Iron/Steel/Aluminum	\$1,658,896,885
07. ▲	Cosmetics Pharma	\$1,599,278,438
08.	Furniture	\$1,544,585,533
09. ▲	Prepared Foods	\$1,189,179,754
10. ▲	Beverages	\$1,070,000,459

SOUTH FLORIDA ADVANTAGES FY2024



Fast Facts

These three commodities represent 293,483 TEUs with a value of \$21.2 Billion for PortMiami (FY2024).

01. Fruits and Vegetables

PortMiami serves as a key gateway for fruits and vegetables from Latin America and the Caribbean, supporting the supply chain that keeps markets stocked year-round. The Port reaches 70% of the US, in one-to-four days.



02. Apparel and Textiles

Apparel and Textiles has become number one commodity for PortMiami. The Port moves large volumes of clothing, fabrics, and other textile products sourced from countries in Central America, the Caribbean and Asia.



03. Machinery

Machinery is a key commodity for PortMiami due to its strategic location as a major gateway for international trade. Machinery used for construction, manufacturing and logistics is moved in and out of the Port across all regions.



Top 10 Commodities: Imports

	COMMODITY	TEUs
01.	Fruit & Vegetables	91,958
02.	Apparel/Textiles	57,831
03.	Machinery	52,566
04.	Furniture	51,633
05.	Plastics/Rubber	40,844
06.	Beverages	38,324
07.	Iron/Steel/Aluminum	26,598
08.	Paper & Products	24,667
09.	Ceramics & Glass	23,750
10.	Prepared Foods	22,308

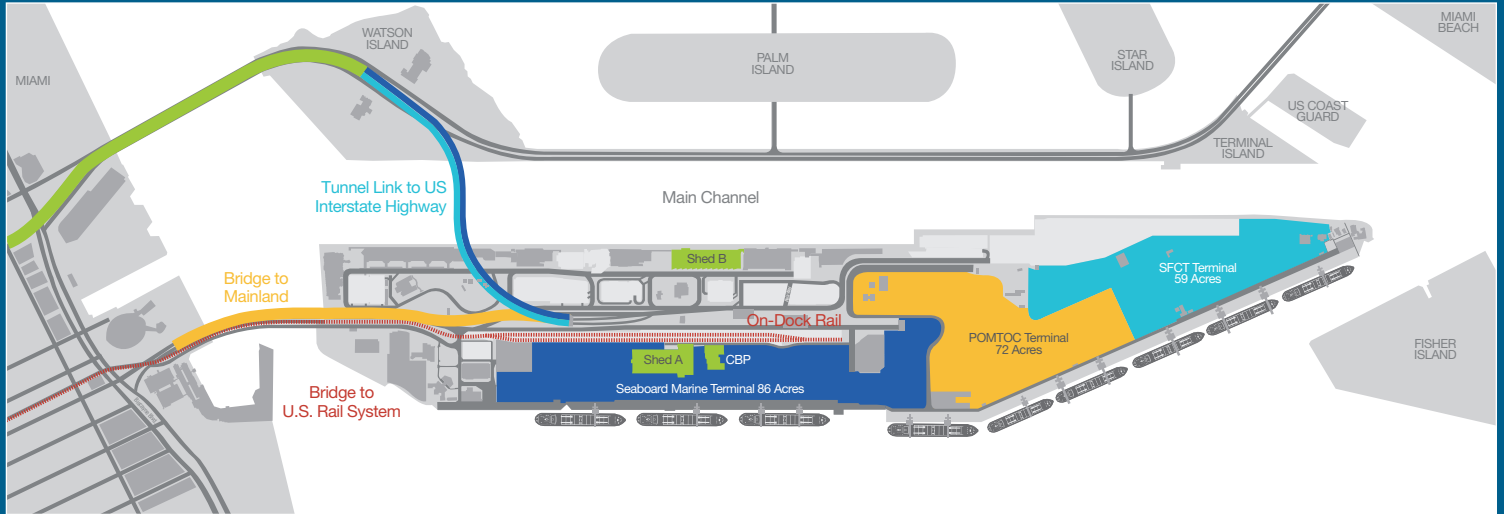
Top 10 Commodities: Exports

	COMMODITY	TEUs
01.	Apparel/Textiles	38,365
02. ▲	Iron/Steel/Aluminum	31,384
03.	Machinery	24,557
04.	Fruit & Vegetables	21,519
05.	Paper & Products	20,679
06.	Furniture	17,432
07. ▲	Prepared Foods	15,029
08. ▲	Plastics/Rubber	12,129
09.	Chemicals	10,336
10. ▲	Beverages	7,388

▲▲▲ Up from FY2023

Connectivity

PortMiami has superior connectivity. The Port connects the seaport to the rest of the Eastern U.S. via an on dock rail network as well as the interstate highways. With 3,000 miles of freight rail tracks and over 122,000 miles of highway, Florida has one of the most extensive multi-modal transportation systems in the world with Miami leading.



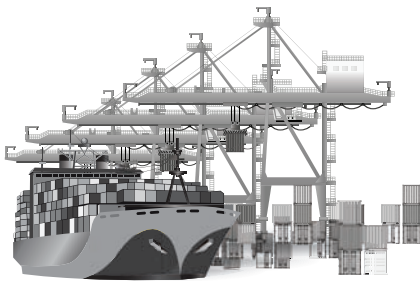
- Direct access to interstate highway system via tunnel including: SR 836, I-75, I-95 and Florida's Turnpike
- No stoplights from PortMiami to Orlando, Atlanta, Chicago and beyond
- Eliminates truck idling and lowers emissions



- Connects to U.S. railway network direct from the port
- 9,000 linear feet of on-dock rail (with plans to add an additional 3,000 more linear feet)
- 351 miles of total track (Florida)
- 73 acres servicing Miami Hialeah Rail Yard)

Infrastructure

PortMiami has exceptional infrastructure. The Port has invested over \$1 billion in capital investments to facilitate the movement of cargo. PortMiami has 9,733 linear feet of dock and wharf to services multiple ships and three expansive patios with a total of 390 acres of yard for the storage thousands of containers.



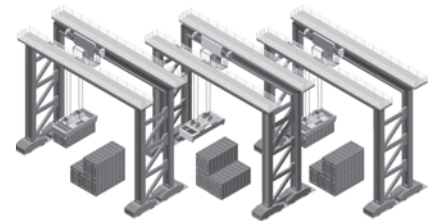
State-of-the-Art Cranes

PortMiami has 13 ship-to-shore cranes including six super Post-Panamax, with plans to add more.



-50/-52 Foot Water Draft

PortMiami is the deepest shipping channel in the Southeast U.S. The Port is only 2.5 nautical miles to the Atlantic Ocean. The -50/-52 foot water draft handles 15,000 TEU vessels.



eRTG Cranes

PortMiami has 18 eRTGs that can stack containers up to six high helping densify the port while reducing carbon emissions.

Carriers



Terminals



1015 N. America Way • 2nd Floor
Miami, Florida 33132
(305) 347-4800