

## FY 2022 - 23 Adopted Budget and Multi-Year Capital Plan

---

### Seaport

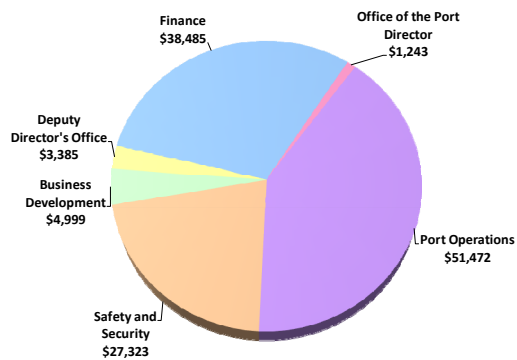
The Seaport Department manages and operates the Dante B. Fascell Port of Miami or PortMiami. PortMiami is the busiest passenger cruise port in the world and the 12th busiest cargo container port in the United States.

As part of the Economic Development strategic area, Seaport is responsible for meeting the infrastructure needs of the cruise and cargo industries, managing the Port efficiently and effectively and maintaining, renovating and expanding the Port's facilities. Seaport promotes cruise and cargo growth through infrastructure enhancements and throughput capacity improvements combined with an aggressive foreign and domestic marketing program.

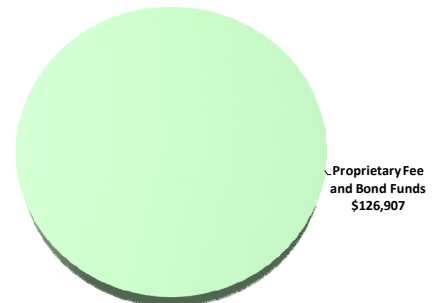
As the second largest economic engine in Miami-Dade County, PortMiami contributes \$43 billion annually to the local economy and supports more than 334,400 jobs in South Florida. Seaport works with the maritime, cruise and cargo industries; truckers; freight forwarders; various federal and state agencies; the Miami-Dade Police and Fire Rescue departments; and all the ancillary service providers that support these customers.

### FY 2022-23 Adopted Operating Budget

#### Expenditures by Activity (dollars in thousands)

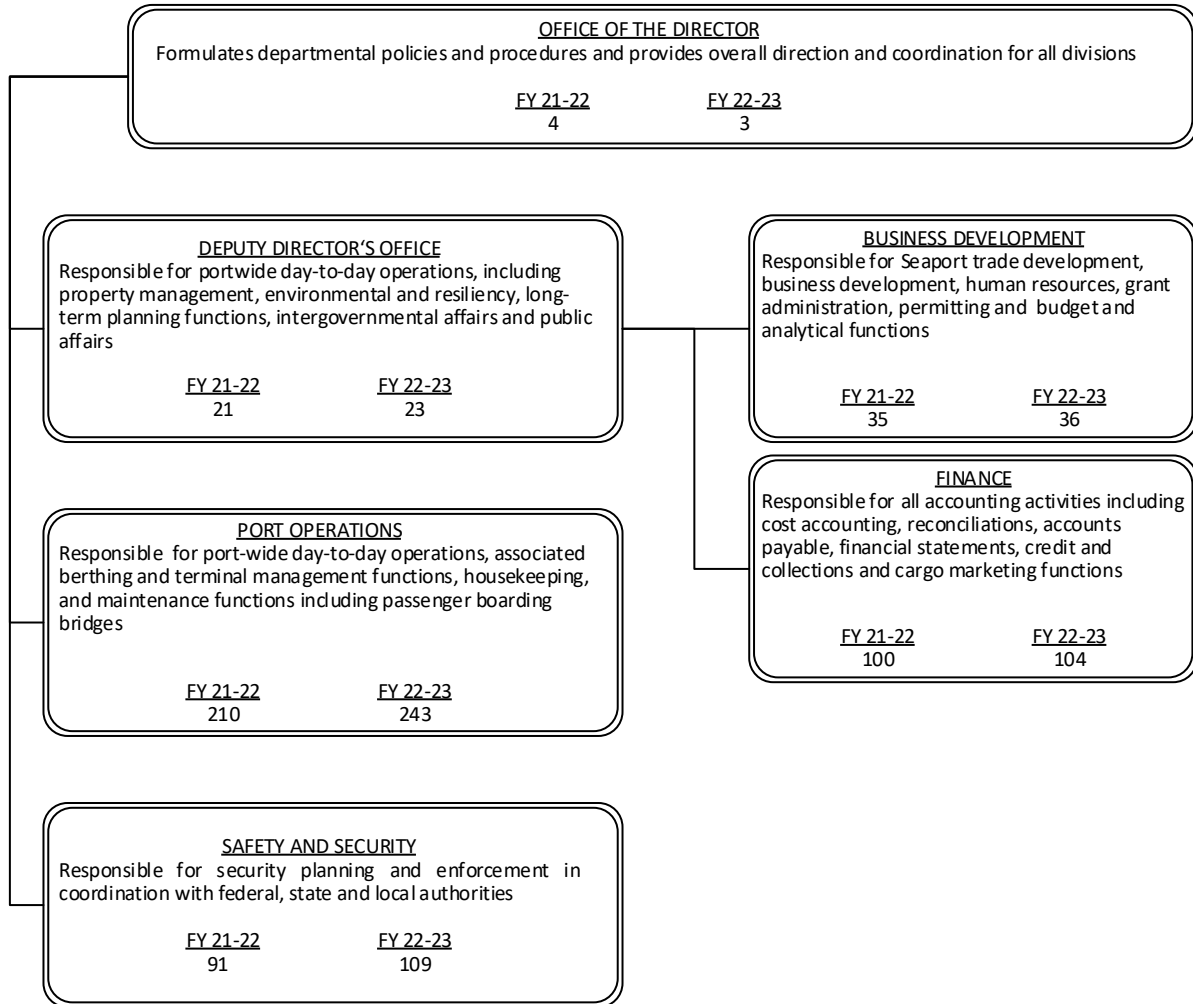


#### Revenues by Source (dollars in thousands)



## FY 2022 - 23 Adopted Budget and Multi-Year Capital Plan

### TABLE OF ORGANIZATION



The FY 2022-23 total number of full-time equivalent positions is 580.4

## FY 2022 - 23 Adopted Budget and Multi-Year Capital Plan

### DIVISION: OFFICE OF THE PORT DIRECTOR

The Office of the Port Director is responsible for overseeing the implementation of the Seaport 2035 Master Plan; overseeing policies and procedures; providing long-term vision and overall direction and coordination for all divisions; and representing the interests of the Seaport and the County at the local, national and international levels.

- Establishes departmental policy, directs overall management, provides long-term vision and implements legislative policy and directives

#### Strategic Objectives - Measures

- ED1-4: Continue to leverage Miami-Dade County's strengths in international commerce, natural resources, and recreational and cultural attractions

Objectives	Measures			FY 19-20	FY 20-21	FY 21-22	FY 21-22	FY 22-23
				Actual	Actual	Budget	Projection	Target
Increase maritime revenue to the Port	Number of TEUs (Twenty Foot Equivalent) (in thousands)	OC	↑	1,067	1,254	1,216	1,292	1,330
	Cruise passengers (in thousands)*	OC	↑	3,477	252	3,800	2,800	3,100

\* FY 2020-21 Actual and FY 2021-22 Projection reflect the impact of Covid-19

#### DIVISION COMMENTS

- The FY 2022-23 Adopted Budget includes a departmental reorganization that transfers one vacant Administrative Secretary to the Deputy Director's Office

### DIVISION: DEPUTY DIRECTOR'S OFFICE

The Office of the Deputy Port Director is responsible for day-to-day operations, including property management, environmental, resiliency, long-term planning functions, intergovernmental affairs and public affairs.

- Coordinates federal, state and local legislative affairs
- Coordinates internal and external communication including public information programs and outreach
- Guides organizational development and performance excellence initiatives
- Provides management direction and administration of all departmental operations and personnel

#### Strategic Objectives - Measures

- ED1-5: Provide world-class airport and seaport facilities

Objectives	Measures			FY 19-20	FY 20-21	FY 21-22	FY 21-22	FY 22-23
				Actual	Actual	Budget	Projection	Target
Efficiently manage Port properties	Property leases occupancy rate*	OC	↑	85%	95%	95%	95%	95%

\*FY 2019-20 Actual, FY 2020-21 Actual and FY 2021-22 Projection reflect the impact of COVID 19

## FY 2022 - 23 Adopted Budget and Multi-Year Capital Plan

### DIVISION COMMENTS

- The FY 2022-23 Adopted Budget includes the conversion of one part-time position to full-time status to improve operating efficiency and decrease position turnover
- The FY 2022-23 Adopted Budget includes a departmental reorganization that establishes a Deputy Director position to provide the oversight for Cargo and Cruise Operations, Facility Maintenance and Safety and Security

### **DIVISION: PORT OPERATIONS**

The Port Operations Division is responsible for port-wide day-to-day operations associated berthing and terminal management functions, housekeeping and maintenance functions including passenger boarding bridges.

- Coordinates PortMiami Crane Management, Inc.'s functions
- Coordinates operations and berthing activities and terminal management functions
- Maintains passenger loading operations

### **Strategic Objectives - Measures**

- ED1-5: Provide world-class airport and seaport facilities

Objectives	Measures			FY 19-20	FY 20-21	FY 21-22	FY 21-22	FY 22-23
				Actual	Actual	Budget	Projection	Target
Improve Port efficiency	Crane availability	EF	↑	99%	98%	99%	99%	99%

### DIVISION COMMENTS

- The FY 2022-23 Adopted Budget includes the conversion of 33 part-time position to full-time status to improve operating efficiency and decrease position turnover

### **DIVISION: BUSINESS DEVELOPMENT**

The Business Development Division is responsible for business retention and trade development as well as long term planning of Seaport requirements, grant administration, communications and outreach, human resources, permitting, budgeting and analytical functions.

- Develops and negotiates short- and long-term agreements for on-Port business activities
- Plans and recommends future business and economic development
- Responsible for long term planning of Seaport activities

## FY 2022 - 23 Adopted Budget and Multi-Year Capital Plan

### DIVISION COMMENTS

- The FY 2022-23 Adopted Budget includes the conversion of one part-time position to full-time status to improve operating efficiency and decrease position turnover

### **DIVISION: FINANCE**

The Finance Division is responsible for accounting and budget activities, procurement and contracts.

- Responsible for all accounting activities including cost accounting, reconciliations, grants accounting, accounts payable, financial reporting, credit/collections and billing
- Coordinates capital and operational budget activities
- Manages financial activities for gantry cranes
- Develops and implements financial strategies to enhance revenues and reduce expenditures
- Responsible for procurement, contracting, information technology and materials management functions of the Department

### **Strategic Objectives - Measures**

- ED1-5: Provide world-class airport and seaport facilities

Objectives	Measures			FY 19-20	FY 20-21	FY 21-22	FY 21-22	FY 22-23
				Actual	Actual	Budget	Projection	Target
Improve Port efficiency	Percentage of purchase requisitions completed	OC	↑	94%	95%	95%	95%	95%

### DIVISION COMMENTS

- The FY 2022-23 Adopted Budget includes the conversion of four part-time positions to full-time status to improve operating efficiency and decrease position turnover

### **DIVISION: SAFETY AND SECURITY**

The Safety and Security Division is responsible for security planning and enforcement in coordination with federal, state and local authorities.

- Coordinates with federal, state and local law enforcement partners
- Ensures adherence to the Facilities Security Plan (FSP) as mandated by the Maritime Transportation Security Act
- Manages all public safety and seaport security efforts, including protection of all PortMiami buildings and property

## FY 2022 - 23 Adopted Budget and Multi-Year Capital Plan

Strategic Objectives - Measures								
<ul style="list-style-type: none"> <li>PS3-3: Protect key infrastructure and enhance security in large gathering places</li> </ul>								
Objectives	Measures			FY 19-20	FY 20-21	FY 21-22	FY 21-22	FY 22-23
				Actual	Actual	Budget	Projection	Target
Ensure public safety and security at the Port	Number of Seaport Enforcement Officers	OP	↑	67	62	67	67	83

### DIVISION COMMENTS

- The FY 2022-23 Adopted Budget includes the conversion of 18 part-time positions to full-time status to improve operating efficiency and decrease position turnover

### ADDITIONAL INFORMATION



As a result of COVID-19, Seaport is uncertain as to what the traffic levels will be in FY 2022-23; consequently, the Department is currently assuming approximately 3.1 million passengers for FY 2022-23; as the fiscal year progresses and actual performance is experienced, the Department's budget may need to be adjusted



The Seaport's Promotional Fund is budgeted at \$400,000 in FY 2022-23 and will be used for activities pursuant to Administrative Order 7-32 as applicable; these funds are not proposed as competitive grant funding but rather as allocations for limited programs that promote Port maritime activities in the Cargo and Cruise Marketing Programs and community outreach

- In FY 2022-23, Seaport will continue its MOUs with Audit and Management Services to conduct audits of various departmental operations and services (\$190,000), the Department of Transportation and Public Works to continue taxi-cab inspection (\$100,000) and survey crews (\$145,000), the Department of Solid Waste Management for mosquito control (\$50,000), the Human Resources Department for compensation analyses (\$50,000), and the County Attorney's Office for legal services (\$1 million)

## FY 2022 - 23 Adopted Budget and Multi-Year Capital Plan

### CAPITAL BUDGET HIGHLIGHTS AND OPERATIONAL IMPACTS



Cargo improvements included in the FY 2022-23 Adopted Budget and Multi-Year Capital Plan include an investment totaling \$1.066 billion; \$67.402 million in FY 2022-23



In FY 2022-23, the Department will continue to repair and upgrade the north bulkhead, expected to add at least 30 years of life to the Port (total program cost \$339.702 million, \$5 million in FY 2022-23; capital program #644300)



In anticipation of the Port receiving larger ships, the Department will add up to five new post-panamax gantry cranes which will bring the total number of cranes to 17; the additional cranes will allow the Port to handle more than one million TEUs annually (total program cost \$148.764 million, \$8.326 million in FY 2022-23; capital program #2000000131)



The Port will also be investing in a new Federal Inspection Facility (total program cost \$38.282 million, \$1 million in FY 2022-23; capital program #641540); a new Inspection and Fumigation facilities (total program cost \$57.033 million, \$28.157 million in FY 2022-23; capital program #2000001418); and a Brightline train station which will allow passengers and employees to connect from Miami-Dade County's transit system to PortMiami (total program cost \$5.2 million; \$10,000 in FY 2022-23; capital program #2000001320); and Security Improvements which allows the department to purchase marine vessels for Miami-Dade Police Department's Harbor Patrol Unit (total program cost \$3.308 million, \$1.145 million for FY2022-23; capital program #2000002759)



The major thrust of the of Seaport's capital improvement plan includes various cruise terminal renovations and new passenger facilities (total program cost \$973.579 million, \$153.780 million in FY 2022-23); the expansion of Cruise Terminal F which will accommodate additional Carnival Cruise Line ships (total program cost \$177.965 million, \$26.852 million in FY 2022-23; capital program #2000000979); the design and construction of the new Cruise Terminal V to support expanding Virgin Voyages operations (total program cost \$136.963 million, \$21.163 million in FY 2022-23; capital program #2000000978); new cruise terminals AA and AAA to support the expanded operations of MSC Cruise Lines (total program cost \$179.161 million, \$50.785 million in FY 2022-23; capital program #2000000570); the preparation of Berth 10 as a new future terminal (total program cost \$185.510 million, \$10 million in FY 2022-23; capital program #2000001343); as a result of these port investments, it is anticipated that the Port will be able to handle over 10 million passengers by FY 2025-26



The FY 2022-23 expenditures for the Shore Power capital program was adjusted from \$55 million to \$58.517 million; moving these expenditures from future years will allow the Port to purchase equipment in greater volume, taking advantage of volume discounts as well as ensuring that Phase 1 of the project is completed by the Fall of 2023 (total program cost \$175.848 million, \$58.517 million in FY 2022-23; capital program #2000001675)



The Department's FY 2022-23 Adopted Budget and Multi-Year Capital Plan includes the purchase of 10 vehicles (\$455,000) to replace its aging fleet; over the next five years, the Department is planning to spend \$2.355 million to replace 58 vehicles as part of its fleet replacement plan; the fleet replacement plan will provide operational savings to the Department in the long-term as it will reduce maintenance costs, fuel consumption and overtime as a result of equipment failure; the County's fleet replacement plan is included under Non-Departmental capital program #2000000511



Seaport's FY 2022-23 Adopted Budget and Multi-Year Capital Plan includes constructing additional rail capacity and increasing cargo gate optimization to reduce traffic congestion at the Port to lower carbon emissions as part of the Department's resiliency initiative (total program cost \$40 million; \$8 million in FY 2022-23; capital program #2000002955); the capital program is funded with US DOT grants (\$16 million) and Future Financing proceeds (\$24 million)

## FY 2022 - 23 Adopted Budget and Multi-Year Capital Plan

### SELECTED ITEM HIGHLIGHTS AND DETAILS

Line-Item Highlights	(dollars in thousands)				
	Actual FY 19-20	Actual FY 20-21	Budget FY 21-22	Projection FY 21-22	Budget FY 22-23
Advertising	223	25	300	0	30
Fuel	134	225	76	154	220
Overtime	1,196	62	1,190	413	1,242
Rent	17	114	25	25	26
Security Services	21,766	15,031	22,288	20,692	25,855
Temporary Services	0	0	0	0	0
Travel and Registration	180	35	295	316	458
Utilities	5,841	5,404	8,279	8,315	8,792

### ADOPTED FEE ADJUSTMENTS FOR SERVICES

Fee Adjustments	Current Fee FY 21-22	Adopted Fee FY 22-23	Dollar Impact FY 22-23
• Various cargo dockage and wharfage rates	Various	Various	\$1,424,340
• Various crane charges	Various	Various	\$582,750
• Various passenger dockage and wharfage rates	Various	Various	\$1,823,010
• Various terminal rental charges	Various	Various	\$506,520
• Water use per ton	3.26	3.32	\$40,170



## FY 2022 - 23 Adopted Budget and Multi-Year Capital Plan

### OPERATING FINANCIAL SUMMARY

(dollars in thousands)	Actual FY 19-20	Actual FY 20-21	Budget FY 21-22	Adopted FY 22-23
<b>Revenue Summary</b>				
Carryover	124,000	115,000	83,776	150,686
FDOT Revenues	17,000	17,000	17,000	17,000
Proprietary Fees	137,989	119,264	184,850	192,638
Total Revenues	278,989	251,264	285,626	360,324
<b>Operating Expenditures</b>				
<b>Summary</b>				
Salary	26,308	12,659	25,985	33,346
Fringe Benefits	10,911	5,913	12,052	15,174
Court Costs	6	13	12	14
Contractual Services	17,102	9,577	16,721	20,090
Other Operating	10,476	2,627	12,040	13,074
Charges for County Services	28,122	20,475	29,979	31,905
Grants to Outside Organizations	0	0	0	0
Capital	-5,676	818	11,008	13,304
Total Operating Expenditures	87,249	52,082	107,797	126,907
<b>Non-Operating Expenditures</b>				
<b>Summary</b>				
Transfers	7,946	48,545	400	400
Distribution of Funds In Trust	0	0	0	0
Debt Service	68,794	22	70,703	62,100
Depreciation, Amortizations and Depletion	0	0	0	0
Reserve	0	0	106,726	170,917
Total Non-Operating Expenditures	76,740	48,567	177,829	233,417

(dollars in thousands)	Total Funding		Total Positions	
Expenditure By Program	Budget FY 21-22	Adopted FY 22-23	Budget FY 21-22	Adopted FY 22-23
<b>Strategic Area: Economic Development</b>				
Office of the Port Director	1,167	1,243	4	3
Deputy Director's Office	1,826	3,385	21	23
Port Operations	41,120	51,472	210	243
Business Development	4,137	4,999	35	36
Finance	37,259	38,485	100	104
Safety and Security	22,288	27,323	91	109
Total Operating Expenditures	107,797	126,907	461	518

## FY 2022 - 23 Adopted Budget and Multi-Year Capital Plan

### **CAPITAL BUDGET SUMMARY**

(dollars in thousands)	PRIOR	FY 22-23	FY 23-24	FY 24-25	FY 25-26	FY 26-27	FY 27-28	FUTURE	TOTAL
<b>Revenue</b>									
Army Corps of Engineers	4,300	0	0	0	0	0	0	0	4,300
FDOT Funds	41,546	32,778	20,186	0	0	0	0	0	94,510
Federal Transportation Grant	40,128	0	0	0	0	0	0	0	40,128
Future Financing	0	341,669	486,933	744,327	397,524	317,780	86,174	228,687	2,603,094
Seaport Bonds/Loans	602,756	0	0	0	0	0	0	0	602,756
Tenant Financing	4,563	6,750	6,188	0	0	0	0	0	17,500
US DOT	10,000	4,000	12,000	0	0	0	0	0	26,000
US Department of Environmental Protection Agency	2,000	0	0	0	0	0	0	0	2,000
US Department of Homeland Security	1,813	909	755	0	0	0	0	0	3,477
Total:	707,106	386,106	526,062	744,327	397,524	317,780	86,174	228,687	3,393,765
<b>Expenditures</b>									
<b>Strategic Area: ED</b>									
Cargo Facilities Improvements	126,742	67,402	179,391	296,358	236,865	116,506	43,203	0	1,066,467
Environmental Projects	24,609	58,517	30,163	52,660	9,087	812	0	0	175,848
New Passenger Facilities	167,268	100,398	114,417	122,273	65,763	59,955	8,630	33,083	671,787
Port Facility Improvements	202,605	105,263	192,564	271,036	76,476	134,174	32,008	160,437	1,174,563
Terminal Improvements	184,745	53,381	8,500	2,000	9,333	6,333	2,333	35,167	301,792
<b>Strategic Area: TM</b>									
Security Improvements	1,136	1,145	1,027	0	0	0	0	0	3,308
Total:	707,106	386,106	526,062	744,327	397,524	317,780	86,174	228,687	3,393,765

### **FUNDED CAPITAL PROGRAMS**

(dollars in thousands)

#### **BRIGHTLINE**

**PROGRAM #: 2000001320**



DESCRIPTION: Build a train station for passengers and employees at the Seaport  
 LOCATION: Dante B. Fascell Port of Miami-Dade District Located: 5  
 Port of Miami District(s) Served: Countywide

REVENUE SCHEDULE:	PRIOR	2022-23	2023-24	2024-25	2025-26	2026-27	2027-28	FUTURE	TOTAL
Future Financing	0	10	159	2,124	2,742	165	0	0	5,200
<b>TOTAL REVENUES:</b>	<b>0</b>	<b>10</b>	<b>159</b>	<b>2,124</b>	<b>2,742</b>	<b>165</b>	<b>0</b>	<b>0</b>	<b>5,200</b>
EXPENDITURE SCHEDULE:	PRIOR	2022-23	2023-24	2024-25	2025-26	2026-27	2027-28	FUTURE	TOTAL
Construction	0	10	159	2,124	2,742	165	0	0	5,200
<b>TOTAL EXPENDITURES:</b>	<b>0</b>	<b>10</b>	<b>159</b>	<b>2,124</b>	<b>2,742</b>	<b>165</b>	<b>0</b>	<b>0</b>	<b>5,200</b>

## FY 2022 - 23 Adopted Budget and Multi-Year Capital Plan

### CONSTRUCTION SUPERVISION

PROGRAM #: 6430061



DESCRIPTION: Provide supervision of on-going construction projects at the Seaport  
 LOCATION: Dante B. Fascell Port of Miami-Dade  
 Port of Miami

District Located: 5  
 District(s) Served: Countywide

REVENUE SCHEDULE:	PRIOR	2022-23	2023-24	2024-25	2025-26	2026-27	2027-28	FUTURE	TOTAL
Future Financing	0	17,669	16,000	16,000	16,000	14,000	8,350	0	88,019
Seaport Bonds/Loans	34,019	0	0	0	0	0	0	0	34,019
<b>TOTAL REVENUES:</b>	<b>34,019</b>	<b>17,669</b>	<b>16,000</b>	<b>16,000</b>	<b>16,000</b>	<b>14,000</b>	<b>8,350</b>	<b>0</b>	<b>122,038</b>
EXPENDITURE SCHEDULE:	PRIOR	2022-23	2023-24	2024-25	2025-26	2026-27	2027-28	FUTURE	TOTAL
Construction	34,019	17,669	16,000	16,000	16,000	14,000	8,350	0	122,038
<b>TOTAL EXPENDITURES:</b>	<b>34,019</b>	<b>17,669</b>	<b>16,000</b>	<b>16,000</b>	<b>16,000</b>	<b>14,000</b>	<b>8,350</b>	<b>0</b>	<b>122,038</b>

### CRUISE TERMINAL BERTH 10 - NEW

PROGRAM #: 2000001343



DESCRIPTION: Prepare Berth 10 for a new future terminal  
 LOCATION: Dante B. Fascell Port of Miami-Dade  
 Port of Miami

District Located: 5  
 District(s) Served: Countywide

REVENUE SCHEDULE:	PRIOR	2022-23	2023-24	2024-25	2025-26	2026-27	2027-28	FUTURE	TOTAL
Future Financing	0	10,000	15,000	51,282	51,282	51,282	0	0	178,846
Seaport Bonds/Loans	6,664	0	0	0	0	0	0	0	6,664
<b>TOTAL REVENUES:</b>	<b>6,664</b>	<b>10,000</b>	<b>15,000</b>	<b>51,282</b>	<b>51,282</b>	<b>51,282</b>	<b>0</b>	<b>0</b>	<b>185,510</b>
EXPENDITURE SCHEDULE:	PRIOR	2022-23	2023-24	2024-25	2025-26	2026-27	2027-28	FUTURE	TOTAL
Construction	6,024	10,000	15,000	51,282	51,282	51,282	0	0	184,870
Infrastructure Improvements	640	0	0	0	0	0	0	0	640
<b>TOTAL EXPENDITURES:</b>	<b>6,664</b>	<b>10,000</b>	<b>15,000</b>	<b>51,282</b>	<b>51,282</b>	<b>51,282</b>	<b>0</b>	<b>0</b>	<b>185,510</b>

## FY 2022 - 23 Adopted Budget and Multi-Year Capital Plan

### CRUISE TERMINAL C - RENOVATIONS

PROGRAM #: 2000000923



DESCRIPTION: Provide renovations to combine terminals B and C to accommodate various cruise lines  
 LOCATION: Dante B. Fascell Port of Miami-Dade District Located: 5  
 Port of Miami District(s) Served: Countywide

REVENUE SCHEDULE:	PRIOR	2022-23	2023-24	2024-25	2025-26	2026-27	2027-28	FUTURE	TOTAL
FDOT Funds	11,176	400	0	0	0	0	0	0	11,576
Future Financing	0	400	0	0	0	0	0	0	400
Seaport Bonds/Loans	5,118	0	0	0	0	0	0	0	5,118
<b>TOTAL REVENUES:</b>	<b>16,294</b>	<b>800</b>	<b>0</b>	<b>0</b>	<b>0</b>	<b>0</b>	<b>0</b>	<b>0</b>	<b>17,094</b>
EXPENDITURE SCHEDULE:	PRIOR	2022-23	2023-24	2024-25	2025-26	2026-27	2027-28	FUTURE	TOTAL
Construction	16,294	800	0	0	0	0	0	0	17,094
<b>TOTAL EXPENDITURES:</b>	<b>16,294</b>	<b>800</b>	<b>0</b>	<b>0</b>	<b>0</b>	<b>0</b>	<b>0</b>	<b>0</b>	<b>17,094</b>

### CRUISE TERMINAL F - EXPANSION (PHASE 2)

PROGRAM #: 2000000979



DESCRIPTION: Expand Terminal F to accommodate additional Carnival Cruise Lines ships  
 LOCATION: Dante B. Fascell Port of Miami-Dade District Located: 5  
 Port of Miami District(s) Served: Countywide

REVENUE SCHEDULE:	PRIOR	2022-23	2023-24	2024-25	2025-26	2026-27	2027-28	FUTURE	TOTAL
Future Financing	0	26,852	0	0	0	0	0	0	26,852
Seaport Bonds/Loans	151,113	0	0	0	0	0	0	0	151,113
<b>TOTAL REVENUES:</b>	<b>151,113</b>	<b>26,852</b>	<b>0</b>	<b>0</b>	<b>0</b>	<b>0</b>	<b>0</b>	<b>0</b>	<b>177,965</b>
EXPENDITURE SCHEDULE:	PRIOR	2022-23	2023-24	2024-25	2025-26	2026-27	2027-28	FUTURE	TOTAL
Art Allowance	892	0	0	0	0	0	0	0	892
Construction	82,883	26,852	0	0	0	0	0	0	109,735
Infrastructure Improvements	67,337	0	0	0	0	0	0	0	67,337
<b>TOTAL EXPENDITURES:</b>	<b>151,113</b>	<b>26,852</b>	<b>0</b>	<b>0</b>	<b>0</b>	<b>0</b>	<b>0</b>	<b>0</b>	<b>177,965</b>

## FY 2022 - 23 Adopted Budget and Multi-Year Capital Plan

### CRUISE TERMINAL G - EXPANSION

PROGRAM #: 2000001291



DESCRIPTION: Design and construct a new cruise terminal to support expanding operations  
 LOCATION: Dante B. Fascell Port of Miami-Dade District Located: 5  
 Port of Miami District(s) Served: N/A

REVENUE SCHEDULE:	PRIOR	2022-23	2023-24	2024-25	2025-26	2026-27	2027-28	FUTURE	TOTAL
Future Financing	0	18,450	81,000	59,310	5,050	0	0	0	163,810
Seaport Bonds/Loans	6,344	0	0	0	0	0	0	0	6,344
<b>TOTAL REVENUES:</b>	<b>6,344</b>	<b>18,450</b>	<b>81,000</b>	<b>59,310</b>	<b>5,050</b>	<b>0</b>	<b>0</b>	<b>0</b>	<b>170,154</b>
EXPENDITURE SCHEDULE:	PRIOR	2022-23	2023-24	2024-25	2025-26	2026-27	2027-28	FUTURE	TOTAL
Construction	0	15,450	81,000	59,310	5,050	0	0	0	160,810
Furniture Fixtures and Equipment	0	3,000	0	0	0	0	0	0	3,000
Planning and Design	6,344	0	0	0	0	0	0	0	6,344
<b>TOTAL EXPENDITURES:</b>	<b>6,344</b>	<b>18,450</b>	<b>81,000</b>	<b>59,310</b>	<b>5,050</b>	<b>0</b>	<b>0</b>	<b>0</b>	<b>170,154</b>

Estimated Annual Operating Impact will begin in FY 2021-22 in the amount of \$1,000,000 and includes 0 FTE(s)

### CRUISE TERMINAL J - IMPROVEMENTS

PROGRAM #: 642930



DESCRIPTION: Upgrade and remodel Terminal J to attract luxury cruise operations by replacing carpet, installing new elevators and completing various terminal repair/upgrades  
 LOCATION: Dante B. Fascell Port of Miami-Dade District Located: 5  
 Port of Miami District(s) Served: Countywide

REVENUE SCHEDULE:	PRIOR	2022-23	2023-24	2024-25	2025-26	2026-27	2027-28	FUTURE	TOTAL
Future Financing	0	15,397	0	0	0	0	0	0	15,397
Seaport Bonds/Loans	6,752	0	0	0	0	0	0	0	6,752
<b>TOTAL REVENUES:</b>	<b>6,752</b>	<b>15,397</b>	<b>0</b>	<b>0</b>	<b>0</b>	<b>0</b>	<b>0</b>	<b>0</b>	<b>22,149</b>
EXPENDITURE SCHEDULE:	PRIOR	2022-23	2023-24	2024-25	2025-26	2026-27	2027-28	FUTURE	TOTAL
Construction	6,752	15,397	0	0	0	0	0	0	22,149
<b>TOTAL EXPENDITURES:</b>	<b>6,752</b>	<b>15,397</b>	<b>0</b>	<b>0</b>	<b>0</b>	<b>0</b>	<b>0</b>	<b>0</b>	<b>22,149</b>

## FY 2022 - 23 Adopted Budget and Multi-Year Capital Plan

### CRUISE TERMINAL V - NEW

PROGRAM #: 2000000978



DESCRIPTION: Design and construct a new cruise terminal to support expanding operations with Virgin Voyages  
 LOCATION: Dante B. Fascell Port of Miami-Dade District Located: 5  
 Port of Miami District(s) Served: Countywide

REVENUE SCHEDULE:	PRIOR	2022-23	2023-24	2024-25	2025-26	2026-27	2027-28	FUTURE	TOTAL
FDOT Funds	2,045	0	0	0	0	0	0	0	2,045
Future Financing	0	21,163	51	51	51	43	0	0	21,359
Seaport Bonds/Loans	113,559	0	0	0	0	0	0	0	113,559
<b>TOTAL REVENUES:</b>	<b>115,604</b>	<b>21,163</b>	<b>51</b>	<b>51</b>	<b>51</b>	<b>43</b>	<b>0</b>	<b>0</b>	<b>136,963</b>
EXPENDITURE SCHEDULE:	PRIOR	2022-23	2023-24	2024-25	2025-26	2026-27	2027-28	FUTURE	TOTAL
Art Allowance	2,393	0	0	0	0	0	0	0	2,393
Construction	12,842	21,163	51	51	51	43	0	0	34,201
Furniture Fixtures and Equipment	10,000	0	0	0	0	0	0	0	10,000
Infrastructure Improvements	90,369	0	0	0	0	0	0	0	90,369
<b>TOTAL EXPENDITURES:</b>	<b>115,604</b>	<b>21,163</b>	<b>51</b>	<b>51</b>	<b>51</b>	<b>43</b>	<b>0</b>	<b>0</b>	<b>136,963</b>

### CRUISE TERMINALS A AND AA - ROADWAYS FLYOVER

PROGRAM #: 2000000724



DESCRIPTION: Construct a new road to handle increased Port traffic for new terminals A and AA  
 LOCATION: Dante B. Fascell Port of Miami-Dade District Located: 5  
 Port of Miami District(s) Served: Countywide

REVENUE SCHEDULE:	PRIOR	2022-23	2023-24	2024-25	2025-26	2026-27	2027-28	FUTURE	TOTAL
FDOT Funds	1,241	2,127	532	0	0	0	0	0	3,900
Future Financing	0	7,743	2,026	0	0	0	0	0	9,769
Seaport Bonds/Loans	22,755	0	0	0	0	0	0	0	22,755
<b>TOTAL REVENUES:</b>	<b>23,996</b>	<b>9,870</b>	<b>2,558</b>	<b>0</b>	<b>0</b>	<b>0</b>	<b>0</b>	<b>0</b>	<b>36,424</b>
EXPENDITURE SCHEDULE:	PRIOR	2022-23	2023-24	2024-25	2025-26	2026-27	2027-28	FUTURE	TOTAL
Construction	22,495	9,870	2,558	0	0	0	0	0	34,923
Infrastructure Improvements	1,502	0	0	0	0	0	0	0	1,502
<b>TOTAL EXPENDITURES:</b>	<b>23,996</b>	<b>9,870</b>	<b>2,558</b>	<b>0</b>	<b>0</b>	<b>0</b>	<b>0</b>	<b>0</b>	<b>36,424</b>

## FY 2022 - 23 Adopted Budget and Multi-Year Capital Plan

### CRUISE TERMINALS AA AND AAA - NEW

PROGRAM #: 2000000570



DESCRIPTION: Design and construct new cruise terminals to support expanded operations of MSC Cruise Line  
 LOCATION: Dante B. Fascell Port of Miami-Dade District Located: 5  
 Port of Miami District(s) Served: Countywide

REVENUE SCHEDULE:	PRIOR	2022-23	2023-24	2024-25	2025-26	2026-27	2027-28	FUTURE	TOTAL
Future Financing	0	50,785	18,366	11,630	9,380	8,630	8,630	33,083	140,504
Seaport Bonds/Loans	38,657	0	0	0	0	0	0	0	38,657
<b>TOTAL REVENUES:</b>	<b>38,657</b>	<b>50,785</b>	<b>18,366</b>	<b>11,630</b>	<b>9,380</b>	<b>8,630</b>	<b>8,630</b>	<b>33,083</b>	<b>179,161</b>
EXPENDITURE SCHEDULE:	PRIOR	2022-23	2023-24	2024-25	2025-26	2026-27	2027-28	FUTURE	TOTAL
Construction	38,331	50,785	18,366	11,630	9,380	8,630	8,630	33,083	178,835
Infrastructure Improvements	326	0	0	0	0	0	0	0	326
<b>TOTAL EXPENDITURES:</b>	<b>38,657</b>	<b>50,785</b>	<b>18,366</b>	<b>11,630</b>	<b>9,380</b>	<b>8,630</b>	<b>8,630</b>	<b>33,083</b>	<b>179,161</b>

### CRUISE TERMINALS D AND E - UPGRADES

PROGRAM #: 2000000061



DESCRIPTION: Upgrade terminals D and E for new Carnival Cruise Line services plus addition of Provisional Facility  
 LOCATION: Dante B. Fascell Port of Miami-Dade District Located: 5  
 Port of Miami District(s) Served: Countywide

REVENUE SCHEDULE:	PRIOR	2022-23	2023-24	2024-25	2025-26	2026-27	2027-28	FUTURE	TOTAL
Future Financing	0	6,999	0	0	0	0	0	0	6,999
Seaport Bonds/Loans	7,949	0	0	0	0	0	0	0	7,949
<b>TOTAL REVENUES:</b>	<b>7,949</b>	<b>6,999</b>	<b>0</b>	<b>0</b>	<b>0</b>	<b>0</b>	<b>0</b>	<b>0</b>	<b>14,948</b>
EXPENDITURE SCHEDULE:	PRIOR	2022-23	2023-24	2024-25	2025-26	2026-27	2027-28	FUTURE	TOTAL
Construction	7,949	6,999	0	0	0	0	0	0	14,948
<b>TOTAL EXPENDITURES:</b>	<b>7,949</b>	<b>6,999</b>	<b>0</b>	<b>0</b>	<b>0</b>	<b>0</b>	<b>0</b>	<b>0</b>	<b>14,948</b>

### FEDERAL INSPECTION FACILITY

PROGRAM #: 641540



DESCRIPTION: Build new Federal Inspection facility for Immigration and Customs Enforcement Operations  
 LOCATION: Dante B. Fascell Port of Miami-Dade District Located: 5  
 Port of Miami District(s) Served: Countywide

REVENUE SCHEDULE:	PRIOR	2022-23	2023-24	2024-25	2025-26	2026-27	2027-28	FUTURE	TOTAL
Future Financing	0	1,000	12,069	14,248	9,373	562	0	0	37,252
Seaport Bonds/Loans	1,030	0	0	0	0	0	0	0	1,030
<b>TOTAL REVENUES:</b>	<b>1,030</b>	<b>1,000</b>	<b>12,069</b>	<b>14,248</b>	<b>9,373</b>	<b>562</b>	<b>0</b>	<b>0</b>	<b>38,282</b>
EXPENDITURE SCHEDULE:	PRIOR	2022-23	2023-24	2024-25	2025-26	2026-27	2027-28	FUTURE	TOTAL
Construction	1,030	1,000	12,069	14,248	9,373	562	0	0	38,282
<b>TOTAL EXPENDITURES:</b>	<b>1,030</b>	<b>1,000</b>	<b>12,069</b>	<b>14,248</b>	<b>9,373</b>	<b>562</b>	<b>0</b>	<b>0</b>	<b>38,282</b>

## FY 2022 - 23 Adopted Budget and Multi-Year Capital Plan

### GANTRY CRANES

PROGRAM #: 2000000131



DESCRIPTION: Purchase five additional post panamax gantry cranes for increased cargo traffic to bring the total number of cranes to 17

LOCATION: Dante B. Fascell Port of Miami-Dade  
Port of Miami

District Located: 5  
District(s) Served: Countywide

REVENUE SCHEDULE:	PRIOR	2022-23	2023-24	2024-25	2025-26	2026-27	2027-28	FUTURE	TOTAL
FDOT Funds	20,938	6,371	0	0	0	0	0	0	27,309
Future Financing	0	1,955	20,119	40,594	44,236	4,727	1,182	0	112,813
Seaport Bonds/Loans	8,642	0	0	0	0	0	0	0	8,642
<b>TOTAL REVENUES:</b>	<b>29,580</b>	<b>8,326</b>	<b>20,119</b>	<b>40,594</b>	<b>44,236</b>	<b>4,727</b>	<b>1,182</b>	<b>0</b>	<b>148,764</b>
EXPENDITURE SCHEDULE:	PRIOR	2022-23	2023-24	2024-25	2025-26	2026-27	2027-28	FUTURE	TOTAL
Major Machinery and Equipment	29,580	8,326	20,119	40,594	44,236	4,727	1,182	0	148,764
<b>TOTAL EXPENDITURES:</b>	<b>29,580</b>	<b>8,326</b>	<b>20,119</b>	<b>40,594</b>	<b>44,236</b>	<b>4,727</b>	<b>1,182</b>	<b>0</b>	<b>148,764</b>

### INFRASTRUCTURE IMPROVEMENTS - CARGO GATE MODIFICATIONS

PROGRAM #: 644010



DESCRIPTION: Purchase and install security systems for new gateway as required

LOCATION: Dante B. Fascell Port of Miami-Dade  
Port of Miami

District Located: 5  
District(s) Served: Countywide

REVENUE SCHEDULE:	PRIOR	2022-23	2023-24	2024-25	2025-26	2026-27	2027-28	FUTURE	TOTAL
Federal Transportation Grant	28,678	0	0	0	0	0	0	0	28,678
Future Financing	0	4,236	0	0	0	0	0	0	4,236
Seaport Bonds/Loans	23,592	0	0	0	0	0	0	0	23,592
<b>TOTAL REVENUES:</b>	<b>52,270</b>	<b>4,236</b>	<b>0</b>	<b>0</b>	<b>0</b>	<b>0</b>	<b>0</b>	<b>0</b>	<b>56,506</b>
EXPENDITURE SCHEDULE:	PRIOR	2022-23	2023-24	2024-25	2025-26	2026-27	2027-28	FUTURE	TOTAL
Construction	47,449	4,236	0	0	0	0	0	0	51,685
Major Machinery and Equipment	4,821	0	0	0	0	0	0	0	4,821
<b>TOTAL EXPENDITURES:</b>	<b>52,270</b>	<b>4,236</b>	<b>0</b>	<b>0</b>	<b>0</b>	<b>0</b>	<b>0</b>	<b>0</b>	<b>56,506</b>



## FY 2022 - 23 Adopted Budget and Multi-Year Capital Plan

### INFRASTRUCTURE IMPROVEMENTS - CONTAINER YARD (SEABOARD)

PROGRAM #: 644520



DESCRIPTION: Provide drainage improvements and various other improvements in the container yard area  
 LOCATION: Dante B. Fascell Port of Miami-Dade District Located: 5  
 Port of Miami District(s) Served: Countywide

REVENUE SCHEDULE:	PRIOR	2022-23	2023-24	2024-25	2025-26	2026-27	2027-28	FUTURE	TOTAL
Future Financing	0	16,781	31,144	54,460	7,543	0	0	0	109,928
Seaport Bonds/Loans	11,645	0	0	0	0	0	0	0	11,645
Tenant Financing	4,000	0	0	0	0	0	0	0	4,000
<b>TOTAL REVENUES:</b>	<b>15,645</b>	<b>16,781</b>	<b>31,144</b>	<b>54,460</b>	<b>7,543</b>	<b>0</b>	<b>0</b>	<b>0</b>	<b>125,573</b>
EXPENDITURE SCHEDULE:	PRIOR	2022-23	2023-24	2024-25	2025-26	2026-27	2027-28	FUTURE	TOTAL
Construction	10,186	16,781	31,144	54,460	7,543	0	0	0	120,114
Major Machinery and Equipment	5,459	0	0	0	0	0	0	0	5,459
<b>TOTAL EXPENDITURES:</b>	<b>15,645</b>	<b>16,781</b>	<b>31,144</b>	<b>54,460</b>	<b>7,543</b>	<b>0</b>	<b>0</b>	<b>0</b>	<b>125,573</b>

### INFRASTRUCTURE IMPROVEMENTS - CRUISE CAMPUS

PROGRAM #: 2000001290



DESCRIPTION: Infrastructure improvements including but not limited to road work and relocations for future buildings constructed by Royal Caribbean Cruise Line, Norwegian Cruise Line and Carnival Cruise Line  
 LOCATION: Dante B. Fascell Port of Miami-Dade District Located: 5  
 Port of Miami District(s) Served: Countywide

REVENUE SCHEDULE:	PRIOR	2022-23	2023-24	2024-25	2025-26	2026-27	2027-28	FUTURE	TOTAL
Future Financing	0	1,663	1,400	1,808	3,940	9,422	16,002	22,211	56,446
Seaport Bonds/Loans	1,612	0	0	0	0	0	0	0	1,612
<b>TOTAL REVENUES:</b>	<b>1,612</b>	<b>1,663</b>	<b>1,400</b>	<b>1,808</b>	<b>3,940</b>	<b>9,422</b>	<b>16,002</b>	<b>22,211</b>	<b>58,058</b>
EXPENDITURE SCHEDULE:	PRIOR	2022-23	2023-24	2024-25	2025-26	2026-27	2027-28	FUTURE	TOTAL
Construction	1,612	1,663	1,400	1,808	3,940	9,422	16,002	22,211	58,058
<b>TOTAL EXPENDITURES:</b>	<b>1,612</b>	<b>1,663</b>	<b>1,400</b>	<b>1,808</b>	<b>3,940</b>	<b>9,422</b>	<b>16,002</b>	<b>22,211</b>	<b>58,058</b>

## FY 2022 - 23 Adopted Budget and Multi-Year Capital Plan

### INFRASTRUCTURE IMPROVEMENTS - NORTH BULKHEAD REHABILITATION

PROGRAM #: 644300



DESCRIPTION: Provide repairs and improvements to the north bulkhead terminal

LOCATION: Dante B. Fascell Port of Miami-Dade

Port of Miami

District Located:

5

District(s) Served:

Countywide

REVENUE SCHEDULE:	PRIOR	2022-23	2023-24	2024-25	2025-26	2026-27	2027-28	FUTURE	TOTAL
Future Financing	0	5,000	1,000	90,000	1,000	90,000	1,000	125,000	313,000
Seaport Bonds/Loans	26,702	0	0	0	0	0	0	0	26,702
<b>TOTAL REVENUES:</b>	<b>26,702</b>	<b>5,000</b>	<b>1,000</b>	<b>90,000</b>	<b>1,000</b>	<b>90,000</b>	<b>1,000</b>	<b>125,000</b>	<b>339,702</b>
EXPENDITURE SCHEDULE:	PRIOR	2022-23	2023-24	2024-25	2025-26	2026-27	2027-28	FUTURE	TOTAL
Construction	26,659	5,000	1,000	90,000	1,000	90,000	1,000	125,000	339,659
Infrastructure Improvements	43	0	0	0	0	0	0	0	43
<b>TOTAL EXPENDITURES:</b>	<b>26,702</b>	<b>5,000</b>	<b>1,000</b>	<b>90,000</b>	<b>1,000</b>	<b>90,000</b>	<b>1,000</b>	<b>125,000</b>	<b>339,702</b>

### INFRASTRUCTURE IMPROVEMENTS - PASSENGER BOARDING BRIDGES

PROGRAM #: 2000001344



DESCRIPTION: Purchase passenger boarding bridges for various terminals throughout the port

LOCATION: Dante B. Fascell Port of Miami-Dade

Port of Miami

District Located:

5

District(s) Served:

Countywide

REVENUE SCHEDULE:	PRIOR	2022-23	2023-24	2024-25	2025-26	2026-27	2027-28	FUTURE	TOTAL
Future Financing	0	3,333	8,500	2,000	9,333	6,333	2,333	35,167	66,999
Seaport Bonds/Loans	2,638	0	0	0	0	0	0	0	2,638
<b>TOTAL REVENUES:</b>	<b>2,638</b>	<b>3,333</b>	<b>8,500</b>	<b>2,000</b>	<b>9,333</b>	<b>6,333</b>	<b>2,333</b>	<b>35,167</b>	<b>69,637</b>
EXPENDITURE SCHEDULE:	PRIOR	2022-23	2023-24	2024-25	2025-26	2026-27	2027-28	FUTURE	TOTAL
Major Machinery and Equipment	2,638	3,333	8,500	2,000	9,333	6,333	2,333	35,167	69,637
<b>TOTAL EXPENDITURES:</b>	<b>2,638</b>	<b>3,333</b>	<b>8,500</b>	<b>2,000</b>	<b>9,333</b>	<b>6,333</b>	<b>2,333</b>	<b>35,167</b>	<b>69,637</b>

## FY 2022 - 23 Adopted Budget and Multi-Year Capital Plan

### INFRASTRUCTURE IMPROVEMENTS - PORT WIDE

PROGRAM #: 645430



DESCRIPTION: Provide infrastructure improvements in various areas of the Port including drainage, wayfinding port beautification projects, etc.

LOCATION: Dante B. Fascell Port of Miami-Dade  
Port of Miami

District Located: 5  
District(s) Served: Countywide

REVENUE SCHEDULE:	PRIOR	2022-23	2023-24	2024-25	2025-26	2026-27	2027-28	FUTURE	TOTAL
Army Corps of Engineers	4,300	0	0	0	0	0	0	0	4,300
FDOT Funds	100	130	0	0	0	0	0	0	230
Federal Transportation Grant	11,450	0	0	0	0	0	0	0	11,450
Future Financing	0	41,247	132,928	145,404	42,583	20,025	6,656	13,226	402,069
Seaport Bonds/Loans	80,005	0	0	0	0	0	0	0	80,005
US DOT	10,000	0	0	0	0	0	0	0	10,000
US Department of Homeland Security	834	0	0	0	0	0	0	0	834
<b>TOTAL REVENUES:</b>	<b>106,690</b>	<b>41,377</b>	<b>132,928</b>	<b>145,404</b>	<b>42,583</b>	<b>20,025</b>	<b>6,656</b>	<b>13,226</b>	<b>508,889</b>
EXPENDITURE SCHEDULE:	PRIOR	2022-23	2023-24	2024-25	2025-26	2026-27	2027-28	FUTURE	TOTAL
Construction	86,363	41,247	132,928	145,404	42,583	20,025	6,656	13,226	488,432
Infrastructure Improvements	20,327	130	0	0	0	0	0	0	20,457
<b>TOTAL EXPENDITURES:</b>	<b>106,690</b>	<b>41,377</b>	<b>132,928</b>	<b>145,404</b>	<b>42,583</b>	<b>20,025</b>	<b>6,656</b>	<b>13,226</b>	<b>508,889</b>

### INFRASTRUCTURE IMPROVEMENTS - SOUTH FLORIDA CONTAINER TERMINAL

PROGRAM #: 647150



DESCRIPTION: Provide drainage improvements and various cargo yard projects in the South Florida Container Terminal

LOCATION: Dante B. Fascell Port of Miami-Dade  
Port of Miami

District Located: 5  
District(s) Served: Countywide

REVENUE SCHEDULE:	PRIOR	2022-23	2023-24	2024-25	2025-26	2026-27	2027-28	FUTURE	TOTAL
FDOT Funds	0	7,000	4,300	0	0	0	0	0	11,300
Future Financing	0	6,831	7,239	2,660	0	0	0	0	16,730
Seaport Bonds/Loans	27,246	0	0	0	0	0	0	0	27,246
<b>TOTAL REVENUES:</b>	<b>27,246</b>	<b>13,831</b>	<b>11,539</b>	<b>2,660</b>	<b>0</b>	<b>0</b>	<b>0</b>	<b>0</b>	<b>55,276</b>
EXPENDITURE SCHEDULE:	PRIOR	2022-23	2023-24	2024-25	2025-26	2026-27	2027-28	FUTURE	TOTAL
Construction	26,863	13,831	11,539	2,660	0	0	0	0	54,893
Planning and Design	383	0	0	0	0	0	0	0	383
<b>TOTAL EXPENDITURES:</b>	<b>27,246</b>	<b>13,831</b>	<b>11,539</b>	<b>2,660</b>	<b>0</b>	<b>0</b>	<b>0</b>	<b>0</b>	<b>55,276</b>

## FY 2022 - 23 Adopted Budget and Multi-Year Capital Plan

### INFRASTRUCTURE IMPROVEMENTS - WATER AND SEWER UPGRADES

PROGRAM #: 647720



DESCRIPTION: Upgrade the Port's water and sewer system for new services

LOCATION: Dante B. Fascell Port of Miami-Dade  
Port of Miami

District Located:  
District(s) Served:

5  
Countywide

REVENUE SCHEDULE:	PRIOR	2022-23	2023-24	2024-25	2025-26	2026-27	2027-28	FUTURE	TOTAL
Future Financing	0	517	639	1,452	838	0	0	0	3,446
Seaport Bonds/Loans	5,491	0	0	0	0	0	0	0	5,491
<b>TOTAL REVENUES:</b>	<b>5,491</b>	<b>517</b>	<b>639</b>	<b>1,452</b>	<b>838</b>	<b>0</b>	<b>0</b>	<b>0</b>	<b>8,937</b>
EXPENDITURE SCHEDULE:	PRIOR	2022-23	2023-24	2024-25	2025-26	2026-27	2027-28	FUTURE	TOTAL
Construction	5,489	517	639	1,452	838	0	0	0	8,935
Infrastructure Improvements	3	0	0	0	0	0	0	0	3
<b>TOTAL EXPENDITURES:</b>	<b>5,491</b>	<b>517</b>	<b>639</b>	<b>1,452</b>	<b>838</b>	<b>0</b>	<b>0</b>	<b>0</b>	<b>8,937</b>

### INLAND PORT DEVELOPMENT

PROGRAM #: 2000000572



DESCRIPTION: Continue Inland Port development of the container storage and transfer staging areas

LOCATION: Dante B. Fascell Port of Miami-Dade  
Port of Miami

District Located:  
District(s) Served:

5  
Countywide

REVENUE SCHEDULE:	PRIOR	2022-23	2023-24	2024-25	2025-26	2026-27	2027-28	FUTURE	TOTAL
FDOT Funds	200	0	0	0	0	0	0	0	200
Future Financing	0	16,228	92,589	190,644	185,086	111,779	42,021	0	638,347
Seaport Bonds/Loans	1,800	0	0	0	0	0	0	0	1,800
<b>TOTAL REVENUES:</b>	<b>2,000</b>	<b>16,228</b>	<b>92,589</b>	<b>190,644</b>	<b>185,086</b>	<b>111,779</b>	<b>42,021</b>	<b>0</b>	<b>640,347</b>
EXPENDITURE SCHEDULE:	PRIOR	2022-23	2023-24	2024-25	2025-26	2026-27	2027-28	FUTURE	TOTAL
Construction	2,000	16,228	92,589	190,644	185,086	111,779	42,021	0	640,347
<b>TOTAL EXPENDITURES:</b>	<b>2,000</b>	<b>16,228</b>	<b>92,589</b>	<b>190,644</b>	<b>185,086</b>	<b>111,779</b>	<b>42,021</b>	<b>0</b>	<b>640,347</b>

## FY 2022 - 23 Adopted Budget and Multi-Year Capital Plan

### INSPECTION AND FUMIGATION FACILITIES

PROGRAM #: 2000001418



DESCRIPTION: Develop a fumigation and cold chain processing center  
 LOCATION: Dante B. Fascell Port of Miami-Dade District Located: 5  
 Port of Miami District(s) Served: Countywide

REVENUE SCHEDULE:	PRIOR	2022-23	2023-24	2024-25	2025-26	2026-27	2027-28	FUTURE	TOTAL
FDOT Funds	1,596	16,750	15,354	0	0	0	0	0	33,700
Future Financing	0	4,657	4,269	0	0	0	0	0	8,926
Seaport Bonds/Loans	907	0	0	0	0	0	0	0	907
Tenant Financing	563	6,750	6,188	0	0	0	0	0	13,500
<b>TOTAL REVENUES:</b>	<b>3,065</b>	<b>28,157</b>	<b>25,811</b>	<b>0</b>	<b>0</b>	<b>0</b>	<b>0</b>	<b>0</b>	<b>57,033</b>
EXPENDITURE SCHEDULE:	PRIOR	2022-23	2023-24	2024-25	2025-26	2026-27	2027-28	FUTURE	TOTAL
Construction	2,158	28,157	25,811	0	0	0	0	0	56,126
Planning and Design	907	0	0	0	0	0	0	0	907
<b>TOTAL EXPENDITURES:</b>	<b>3,065</b>	<b>28,157</b>	<b>25,811</b>	<b>0</b>	<b>0</b>	<b>0</b>	<b>0</b>	<b>0</b>	<b>57,033</b>

### NETZERO CARGO PROGRAM

PROGRAM #: 2000002955



DESCRIPTION: Construct additional rail capacity and increase cargo gate optimization to reduce traffic congestion at the Port and lower carbon emissions  
 LOCATION: Dante B. Fascell Port of Miami-Dade District Located: 5  
 Port of Miami District(s) Served: Countywide

REVENUE SCHEDULE:	PRIOR	2022-23	2023-24	2024-25	2025-26	2026-27	2027-28	FUTURE	TOTAL
Future Financing	0	4,000	12,000	8,000	0	0	0	0	24,000
US DOT	0	4,000	12,000	0	0	0	0	0	16,000
<b>TOTAL REVENUES:</b>	<b>0</b>	<b>8,000</b>	<b>24,000</b>	<b>8,000</b>	<b>0</b>	<b>0</b>	<b>0</b>	<b>0</b>	<b>40,000</b>
EXPENDITURE SCHEDULE:	PRIOR	2022-23	2023-24	2024-25	2025-26	2026-27	2027-28	FUTURE	TOTAL
Construction	0	8,000	6,000	8,000	0	0	0	0	22,000
Major Machinery and Equipment	0	0	18,000	0	0	0	0	0	18,000
<b>TOTAL EXPENDITURES:</b>	<b>0</b>	<b>8,000</b>	<b>24,000</b>	<b>8,000</b>	<b>0</b>	<b>0</b>	<b>0</b>	<b>0</b>	<b>40,000</b>

## FY 2022 - 23 Adopted Budget and Multi-Year Capital Plan

### PORT WIDE SECURITY ENHANCEMENTS

PROGRAM #: 2000002759



DESCRIPTION: Purchase marine vessels for the Harbor Patrol Unit of the Miami-Dade Police Department; to provide Security Zone enforcement for cruise ships

LOCATION: Dante B. Fascell Port of Miami-Dade  
Port of Miami

District Located: 5  
District(s) Served: Countywide

REVENUE SCHEDULE:	PRIOR	2022-23	2023-24	2024-25	2025-26	2026-27	2027-28	FUTURE	TOTAL
Future Financing	0	236	272	0	0	0	0	0	508
Seaport Bonds/Loans	157	0	0	0	0	0	0	0	157
US Department of Homeland Security	979	909	755	0	0	0	0	0	2,643
<b>TOTAL REVENUES:</b>	<b>1,136</b>	<b>1,145</b>	<b>1,027</b>	<b>0</b>	<b>0</b>	<b>0</b>	<b>0</b>	<b>0</b>	<b>3,308</b>
EXPENDITURE SCHEDULE:	PRIOR	2022-23	2023-24	2024-25	2025-26	2026-27	2027-28	FUTURE	TOTAL
Automobiles/Vehicles	945	945	1,027	0	0	0	0	0	2,917
Infrastructure Improvements	191	200	0	0	0	0	0	0	391
<b>TOTAL EXPENDITURES:</b>	<b>1,136</b>	<b>1,145</b>	<b>1,027</b>	<b>0</b>	<b>0</b>	<b>0</b>	<b>0</b>	<b>0</b>	<b>3,308</b>

### SHORE POWER

PROGRAM #: 2000001675



DESCRIPTION: Provide Shore Power to all cruise terminals which will allow ships to turn off their primary engines while docked resulting in reduced air emissions

LOCATION: Dante B. Fascell Port of Miami-Dade  
Port of Miami

District Located: 5  
District(s) Served: Countywide

REVENUE SCHEDULE:	PRIOR	2022-23	2023-24	2024-25	2025-26	2026-27	2027-28	FUTURE	TOTAL
FDOT Funds	4,250	0	0	0	0	0	0	0	4,250
Future Financing	0	58,517	30,163	52,660	9,087	812	0	0	151,239
Seaport Bonds/Loans	18,359	0	0	0	0	0	0	0	18,359
US Department of Environmental Protection Agency	2,000	0	0	0	0	0	0	0	2,000
<b>TOTAL REVENUES:</b>	<b>24,609</b>	<b>58,517</b>	<b>30,163</b>	<b>52,660</b>	<b>9,087</b>	<b>812</b>	<b>0</b>	<b>0</b>	<b>175,848</b>
EXPENDITURE SCHEDULE:	PRIOR	2022-23	2023-24	2024-25	2025-26	2026-27	2027-28	FUTURE	TOTAL
Construction	24,609	58,517	30,163	52,660	9,087	812	0	0	175,848
<b>TOTAL EXPENDITURES:</b>	<b>24,609</b>	<b>58,517</b>	<b>30,163</b>	<b>52,660</b>	<b>9,087</b>	<b>812</b>	<b>0</b>	<b>0</b>	<b>175,848</b>

### UNFUNDED CAPITAL PROGRAMS

PROGRAM NAME	LOCATION	(dollars in thousands) ESTIMATED PROGRAM COST
CRUISE FERRY COMPLEX - NEW	Dante B. Fascell Port of Miami-Dade	20,000
CRUISE TERMINALS - CONCOURSES AND BERTHING MODIFICATIONS	Dante B. Fascell Port of Miami-Dade	15,000
GANTRY CRANES - RUBBER TIRE REPLACEMENT	Dante B. Fascell Port of Miami-Dade	10,000
NEW BERTH O - WEST NEW APRON	Dante B. Fascell Port of Miami-Dade	67,000
PARKING GARAGES - EXPANSION	Dante B. Fascell Port of Miami-Dade	55,000
PASSENGER TERMINALS - MOBILE WALKWAYS	Dante B. Fascell Port of Miami-Dade	10,200
PORT OPERATIONS SITE - NEW FACILITY	Dante B. Fascell Port of Miami-Dade	23,500
PORT ROADWAY - REALIGNMENT	Dante B. Fascell Port of Miami-Dade	25,000
<b>UNFUNDED TOTAL</b>		<b>225,700</b>