

## FY 2025-26 Adopted Budget and Multi-Year Capital Plan

### Seaport

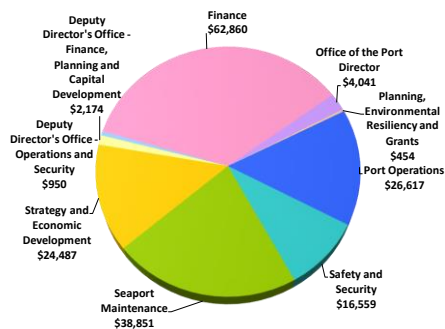
The Seaport Department manages and operates the Dante B. Fascell Port of Miami or PortMiami. PortMiami is the busiest passenger cruise port in the world and the 12th busiest cargo container port in the United States.

As part of the Economic Development strategic area, Seaport is responsible for meeting the infrastructure needs of the cruise and cargo industries; managing the Port efficiently and effectively; and maintaining, renovating and expanding the Port's facilities. Seaport promotes cruise and cargo growth through infrastructure improvements and throughput capacity improvements combined with an aggressive foreign and domestic marketing program.

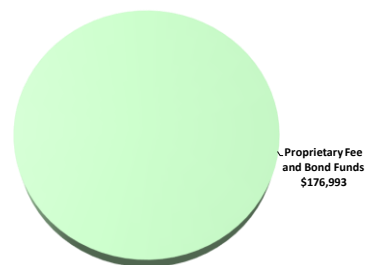
As the second largest economic engine in Miami-Dade County, PortMiami contributes \$61 billion annually to the local economy and supports more than 340,000 jobs in South Florida. Seaport works with the maritime, cruise and cargo industries; truckers; freight forwarders; various federal and state agencies; the Sheriff's Office; the Fire Rescue Department; and all the ancillary service providers that support these customers.

### FY 2025-26 Adopted Operating Budget

**Expenditures by Activity**  
(dollars in thousands)

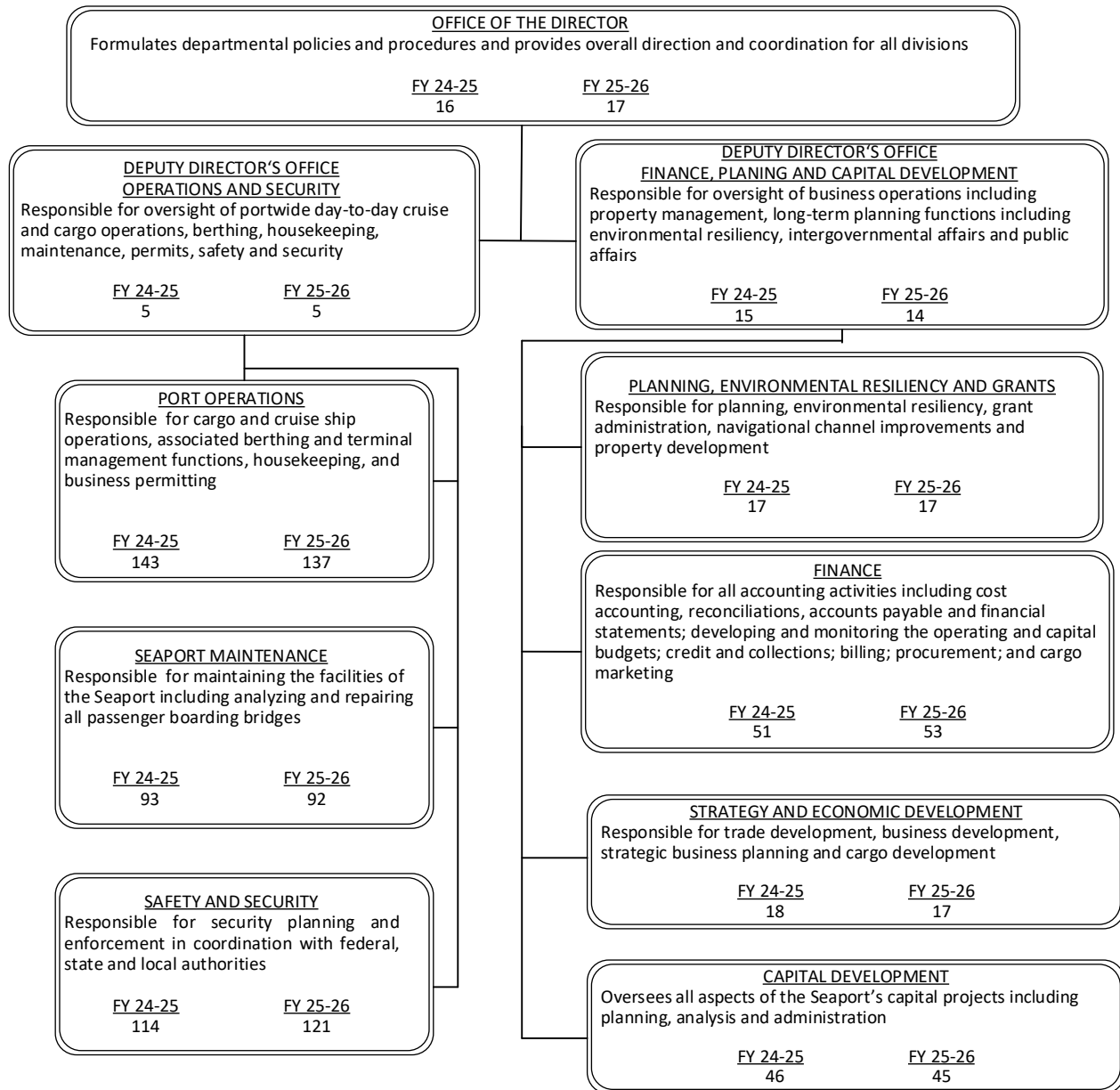


**Revenues by Source**  
(dollars in thousands)



# FY 2025-26 Adopted Budget and Multi-Year Capital Plan

## TABLE OF ORGANIZATION



The FY 2025-26 total number of full-time equivalent positions is 586.3 (518 FTE and 68.3 PTE)

## FY 2025-26 Adopted Budget and Multi-Year Capital Plan

### **DIVISION: OFFICE OF THE PORT DIRECTOR**

The Office of the Port Director formulates departmental policies and procedures, provides overall direction and coordination of all divisions, and oversees intergovernmental affairs and public affairs.

#### **Strategic Plan Objectives**

- ED1-4: Continue to leverage Miami-Dade County's strengths in international commerce, natural resources, and recreational and cultural attractions

Departmental Objectives	Performance Measures	Measure Type	Good Direction	FY 22-23	FY 23-24	FY 24-25	FY 25-26
				Actual	Actual	Budget	Target
Increase maritime revenue to the Port	Cargo volume handled (TEUs)	OC	↑	1,098,324	1,089,456	1,080,000	1,080,000
	Cruise passengers (in thousands)	OC	↑	7,299	8,233	7,500	8,300

#### **DIVISION COMMENTS**

- The FY 2025-26 Adopted Budget includes a transfer of one position from the Deputy Director's Office – Finance, Planning and Capital Development to the Office of the Port Director

### **DIVISION: DEPUTY DIRECTOR'S OFFICE - FINANCE, PLANNING AND CAPITAL DEVELOPMENT**

The Office of the Deputy Port Director is responsible for business development, human resources, finance administration, grant administration, capital development, property management and long-term planning functions.

- Guides organizational development and performance excellence initiatives
- Provides management direction and administration of all departmental operations and personnel

#### **DIVISION COMMENTS**

- The FY 2025-26 Adopted Budget includes a transfer of one position from the Deputy Director's Office – Finance, Planning and Capital Development to the Office of the Port Director

## FY 2025-26 Adopted Budget and Multi-Year Capital Plan

### **DIVISION: DEPUTY DIRECTOR'S OFFICE - OPERATIONS AND SECURITY**

The Office of the Deputy Port Director is responsible for port-wide day-to-day cruise and cargo operations, berthing, housekeeping, maintenance, permits, safety, and security.

- Guides organizational development to streamline embarkation and disembarkation through well-coordinated terminal services, customs processing, and transportation connectivity to enhance the passenger experience
- Provides management oversight to ensure the security and safety of port stakeholders, passengers, crew and cargo through rigorous security protocols, emergency preparedness, and adherence to facility and environmental regulations
- Oversees and facilitates the efficient movement, loading, and unloading of containerized cargo using advanced equipment, facilities, and coordinated supply chain systems

### **DIVISION: PORT OPERATIONS**

The Port Operations Division is responsible for port-wide day-to-day operations associated with berthing and terminal management functions and housekeeping.

- Coordinates PortMiami Crane Management, Inc.'s functions
- Coordinates operations and berthing activities and terminal management functions
- Maintains passenger loading operations

#### **Strategic Plan Objectives**

- ED1-5: Provide world-class airport and seaport facilities

Departmental Objectives	Performance Measures	Measure Type	Good Direction	FY 22-23	FY 23-24	FY 24-25	FY 25-26
				Actual	Actual	Budget	Target
Improve the quality and efficiency of port operations	Seaport gantry crane availability	EF	↑	98.1%	98.8%	98.9%	98.9%

#### **DIVISION COMMENTS**

- The FY 2025-26 Adopted Budget includes a transfer of six positions from Port Operations to Safety and Security

## FY 2025-26 Adopted Budget and Multi-Year Capital Plan

### **DIVISION: SEAPORT MAINTENANCE**

The Seaport Maintenance Division is responsible for maintaining the facilities of the Seaport including analyzing and repairing all passenger boarding bridges

- Maintains passenger loading bridges, baggage handling systems, and associate equipment at PortMiami
- Maintains various aspects of PortMiami infrastructure
- Performs light groundskeeping

### **DIVISION COMMENTS**

- The FY 2025-26 Adopted Budget includes a transfer of one position from Seaport Maintenance to Safety and Security

### **DIVISION: SAFETY AND SECURITY**

The Safety and Security Division is responsible for security planning and enforcement in coordination with federal, state and local authorities.

- Coordinates with federal, state and local law enforcement partners
- Ensures adherence to the Facilities Security Plan (FSP) as mandated by the Maritime Transportation Security Act
- Manages all public safety and seaport security efforts, including protection of all PortMiami buildings and property

### **Strategic Plan Objectives**

- PS3-3: Protect key infrastructure and enhance security in large gathering places

Departmental Objectives	Performance Measures	Measure Type	Good Direction	FY 22-23	FY 23-24	FY 24-25	FY 25-26
				Actual	Actual	Budget	Target
Ensure public safety and security at the Port	Number of filled security positions	OP	↔	73	72	77	77

### **DIVISION COMMENTS**

- The FY 2025-26 Adopted Budget includes a transfer of six positions from Port Operations and one position from Seaport Maintenance to Safety and Security

## FY 2025-26 Adopted Budget and Multi-Year Capital Plan

### DIVISION: PLANNING, ENVIRONMENTAL RESILIENCY AND GRANTS

The Office of Planning, Environmental Resiliency and Grants provides grant administration, property management and long-term planning functions.

- Develops and implements all planning efforts for the Port in coordination with commitments contained in operating agreements, grant awards and the capital program
- Oversees the Port's environmental permitting and National Environmental Policy Act (NEPA) compliance requirements
- Responsible for all grant applications and administrative tasks to support PortMiami's capital program
- Creates and manages standard tenant leases and conducts administrative activities for operating agreements with cruise and cargo partners

#### Strategic Plan Objectives

- ED1-5: Provide world-class airport and seaport facilities

Departmental Objectives	Performance Measures	Measure Type	Good Direction	FY 22-23	FY 23-24	FY 24-25	FY 25-26
				Actual	Actual	Budget	Target
Meet budget targets	Seaport tenant occupancy rate	OC	↑	100.00%	98.18%	95.00%	95.00%

### DIVISION: FINANCE

The Finance Division is responsible for accounting and budget activities, procurement and contracts.

- Responsible for all accounting activities including cost accounting, reconciliations, grants accounting, accounts payable, financial reporting, credit/collections and billing
- Coordinates capital and operational budget activities
- Manages financial activities for gantry cranes
- Develops and implements financial strategies to increase revenues and reduce expenditures
- Responsible for procurement, contracting, information technology and materials management functions of the Department

#### Strategic Plan Objectives

- ED1-5: Provide world-class airport and seaport facilities

Departmental Objectives	Performance Measures	Measure Type	Good Direction	FY 22-23	FY 23-24	FY 24-25	FY 25-26
				Actual	Actual	Budget	Target
Improve the quality and efficiency of port operations	Percentage of goods and services requisitions completed	OC	↑	95%	100%	95%	95%

#### DIVISION COMMENTS

- The FY 2025-26 Adopted Budget includes a transfer of one position from Capital Development and one position from Strategy and Economic Development to Finance

## FY 2025-26 Adopted Budget and Multi-Year Capital Plan

### **DIVISION: STRATEGY AND ECONOMIC DEVELOPMENT**

The Strategy and Economic Division is responsible for trade development, business development, strategic business planning and cargo development.

- Develops and negotiates short- and long-term agreements for on-Port business activities
- Plans and recommends future business and economic development
- Responsible for long term planning of Seaport activities

#### **DIVISION COMMENTS**

- The FY 2025-26 Adopted Budget includes a transfer of one position from Strategy and Economic Development to Finance

### **DIVISION: CAPITAL DEVELOPMENT**

The Capital Development Division manages implementation of capital improvement programs.

- Coordinates Seaport design, engineering and construction management activities
- Coordinates issues with various local, state and federal agencies
- Performs the Port's property, facilities and equipment maintenance functions

#### **Strategic Plan Objectives**

- ED1-5: Provide world-class airport and seaport facilities

Departmental Objectives	Performance Measures	Measure Type	Good Direction	FY 22-23	FY 23-24	FY 24-25	FY 25-26
				Actual	Actual	Budget	Target
Improve the quality and efficiency of port operations	Percentage of projects completed on time and within budget	EF	↑	98%	98%	95%	95%

#### **DIVISION COMMENTS**

- The FY 2025-26 Adopted Budget includes a transfer of one position from Capital Development to Finance

## FY 2025-26 Adopted Budget and Multi-Year Capital Plan

---

### ADDITIONAL INFORMATION

- The Department is currently assuming approximately 8.3 million passengers for FY 2025-26; as the fiscal year progresses and actual performance is experienced, the Department's adopted budget may need to be adjusted
- The Seaport's Promotional Fund is budgeted at \$700,000 in FY 2025-26 and will be used for activities pursuant to Administrative Order 7-32 as applicable; these funds are not proposed as competitive grant funding but rather as allocations for limited programs that promote Port maritime activities in the Cargo and Cruise Marketing Programs and community outreach
- In FY 2025-26, Seaport will continue its Memoranda of Understanding with the Internal Compliance Department to conduct studies of various departmental operations and services (\$219,000), the Department of Transportation and Public Works to continue taxi-cab inspection (\$100,000), the Department of Solid Waste Management for mosquito control (\$8,240), the People and Internal Operations Department for compensation analysis (\$57,680), the Sherriff's Office for police services (\$19.873 million); the Miami-Dade Fire Rescue Department for fire services (\$8.450 million) and the County Attorney's Office for legal services (\$1.030 million)

### CAPITAL BUDGET HIGHLIGHTS AND OPERATIONAL IMPACTS

- PortMiami replaced the older diesel-powered gantry crane with six new all-electric rubber-tired gantry cranes (E-RTG) at the South Florida Container Terminal in 2020 and is projecting 12 more electric gantry cranes to be implemented by 2026; and in partnership with the Florida East Coast Railway, the U.S. Department of Transportation, and the State of Florida, PortMiami reactivated its intermodal rail yard directly linking the port to the national rail network via the Hialeah Rail Yard and in doing so, has significantly enhanced PortMiami's cargo operations and logistical capabilities; the restored rail connection allows cargo to move seamlessly from PortMiami to the national rail system, facilitating efficient distribution across the continental U.S.; on-dock intermodal rail service offers shippers reliable port-to-door solutions, providing lead times that match or surpass those of trucking, with improved reliability; the improved rail infrastructure enables containerized cargo to reach 70% of the American population within one to four days, thereby bolstering PortMiami's position as a major global logistics hub; by shifting cargo transport from road to rail, the port reduces highway congestion; the reactivation supports economic growth by enhancing supply chain efficiency, attracting new businesses, and creating job opportunities within the region
- The Seaport's capital improvement plan includes continued funding for the new cruise terminals AA and AAA to support the expanded operations of MSC Cruise Lines; the capital program is funded with Seaport bonds and loans (\$110.477 million) and Future Financing proceeds (\$59.522 million) (total program cost \$169.999 million; \$10 million in FY 2025-26; capital program #2000000570); and the construction of a new cruise terminal Berth 10, to facilitate additional cruise ships; the capital program is funded with a state grant from the Department of Environmental Protection (\$19.547 million), Seaport bonds and loans (\$7.205 million) and \$158.248 million from Future Financing proceeds (total program cost \$185 million; \$22 million in FY 2025-26; capital program #2000001343); all terminals will be LEED Silver certified
- In anticipation of the Port receiving larger container ships, the Department will add four additional gantry cranes with an option for an additional four gantry cranes as needed; these additional cranes will allow the Port to handle more than 1.5 million TEUs annually; the capital program is funded with Future Financing bond proceeds (\$116.145 million) and Seaport bonds/loans (\$2.855 million) (total program cost \$119 million; \$12.5 million in FY 2025-26; capital program #2000000131)
- In FY 2025-26, the Department continues to work on the LEED Silver certified Cruise Campus project which includes construction of the Royal Caribbean Cruise Line Global Headquarters, increasing employment in the County by an estimated 1,000; the capital program is funded with Seaport bonds (\$459.246 million) and Tenant Financing (\$161.754 million) (total program cost \$621 million; \$213.589 million in FY 2025-26; capital program #2000001290)
- In FY 2025-26, the Seaport will continue to repair and upgrade the north bulkhead; the capital program is expected to add at least 75 years of life to the Port's cruise business; included in the north bulkhead rehabilitation project are cruise terminals B, C, D, E, F and G; the capital program is funded with a state grant from the Florida Department of Environmental Protection (\$320,000), Future Financing bond proceeds (\$428.766 million), and Seaport bonds and loans (\$30.696 million) (total program cost \$459.782 million; \$38 million in FY 2025-26; capital program #644300)
- Seaport's FY 2025-26 Adopted Budget and Multi-Year Capital Plan includes constructing additional rail capacity and increasing cargo gate optimization to reduce traffic congestion at the Port; the capital program is funded with a US DOT grant (\$16 million), Future Financing bond proceeds (\$25.893 million), and Seaport bonds/loans (\$182,000) (total program cost \$42.075 million; \$2.3 million in FY 2025-26; capital program #2000002955)



## FY 2025-26 Adopted Budget and Multi-Year Capital Plan

- Seaport's FY 2025-26 Adopted Budget and Multi-Year Capital Plan includes the replacement port offices and port services currently provided in the World Trade Center which is being demolished to construct new Cruise Terminal G; the new buildings will be LEED Silver certified; the capital program is funded with Future Financing bond proceeds (\$124.5 million) and Seaport bonds/loans (\$2.5 million) (total program cost \$127 million; capital program #2000004017)
- Seaport's FY 2025-26 Adopted Budget and Multi-Year Capital Plan includes the Shore Power capital program which will allow ships to turn off their primary engines while docked; in 2021, Miami-Dade County committed to providing the infrastructure necessary to allow cruise ships to plug into the electrical grid at the Port; in 2022, the Seaport announced that it was expanding its plans for offering shore power at five terminals; in 2025, Seaport will be the first port on the east coast to provide shore power at five cruise terminals with the ability to plug in three cruise vessels simultaneously (total program cost \$177.195 million; \$3.68 million in FY 2025-26; capital program #2000001675)
- The Department's FY 2025-26 Adopted Budget and Multi-Year Capital Plan includes the purchase of 13 vehicles (\$688,000) to replace its aging fleet; over the next five years, the Department is planning to spend \$441,000 to replace an additional nine vehicles as part of its fleet replacement plan; the fleet replacement plan will provide operational savings to the Department in the long-term as it will reduce maintenance costs, fuel consumption and overtime as a result of equipment failure; the County's fleet replacement plan is included under Non-Departmental capital program #2000000511

### SELECTED ITEM HIGHLIGHTS AND DETAILS

Line-Item Highlights	(dollars in thousands)				
	Actual FY 22-23	Actual FY 23-24	Budget FY 24-25	Projection FY 24-25	Adopted FY 25-26
Advertising	41	249	280	411	250
Fuel	332	349	319	341	325
Overtime	2,688	3,596	2,823	2,821	2,363
Rent	201	200	271	661	607
Security Services	-40	-124	2	-39	2
Temporary Services	26	27	250	55	72
Travel and Registration	299	180	511	228	435
Utilities	8,391	8,772	10,711	11,485	11,213

### Adopted

Fee Adjustments	Current Fee FY 24-25	Adopted Fee FY 25-26	Dollar Impact FY 25-26
<ul style="list-style-type: none"> <li>Various cargo dockage and wharfage rates</li> <li>Various crane charges</li> <li>Various passenger dockage and wharfage rates</li> <li>Water use per ton</li> </ul>	<ul style="list-style-type: none"> <li>Various</li> <li>Various</li> <li>Various</li> <li>3.85</li> </ul>	<ul style="list-style-type: none"> <li>Various</li> <li>Various</li> <li>Various</li> <li>3.97</li> </ul>	<ul style="list-style-type: none"> <li>\$3,727,000</li> <li>\$1,263,000</li> <li>\$3,251,000</li> <li>\$35,000</li> </ul>

## FY 2025-26 Adopted Budget and Multi-Year Capital Plan

### OPERATING FINANCIAL SUMMARY

(dollars in thousands)	Actual FY 22-23	Actual FY 23-24	Budget FY 24-25	Adopted FY 25-26
<b>Revenue Summary</b>				
Carryover	197,082	282,170	308,813	421,751
FDOT Revenues	17,000	17,000	17,000	17,000
Non-Operating Revenue	0	0	0	792
Proprietary Fees	270,506	344,695	271,479	329,020
<b>Total Revenues</b>	<b>484,588</b>	<b>643,865</b>	<b>597,292</b>	<b>768,563</b>
<b>Operating Expenditures</b>				
<b>Summary</b>				
Salary	29,102	33,490	40,311	36,212
Fringe Benefits	21,849	15,236	22,597	18,496
Court Costs	29	17	16	17
Contractual Services	19,673	21,587	25,962	25,605
Other Operating	24,761	47,303	42,273	43,132
Charges for County Services	31,331	34,264	41,569	41,720
Grants to Outside	5	13	0	0
Organizations				
Capital	3,832	2,201	15,011	11,811
<b>Total Operating Expenditures</b>	<b>130,582</b>	<b>154,111</b>	<b>187,739</b>	<b>176,993</b>
<b>Non-Operating Expenditures</b>				
<b>Summary</b>				
Transfers	109	128,536	90,024	97,165
Distribution of Funds In Trust	0	0	0	0
Debt Service	37	133	0	0
Depreciation, Amortizations and Depletion	0	0	0	0
Reserve	0	0	319,529	494,405
<b>Total Non-Operating     Expenditures</b>	<b>146</b>	<b>128,669</b>	<b>409,553</b>	<b>591,570</b>

(dollars in thousands)	Total Funding		Total Positions	
Expenditure By Program	Budget FY 24-25	Adopted FY 25-26	Budget FY 24-25	Adopted FY 25-26
<b>Strategic Area: Economic Development</b>				
Office of the Port Director	3,833	4,041	16	17
Deputy Director's Office - Finance, Planning and Capital Development	2,605	2,174	15	14
Deputy Director's Office - Operations and Security	1,123	950	5	5
Port Operations	51,383	26,617	143	137
Seaport Maintenance	19,171	38,851	93	92
Safety and Security	46,044	16,559	114	121
Planning, Environmental Resiliency and Grants	529	454	17	17
Finance	36,852	62,860	51	53
Strategy and Economic Development	26,199	24,487	18	17
Capital Development	0	0	46	45
<b>Total Operating Expenditures</b>	<b>187,739</b>	<b>176,993</b>	<b>518</b>	<b>518</b>

## FY 2025-26 Adopted Budget and Multi-Year Capital Plan

### **CAPITAL BUDGET SUMMARY**

(dollars in thousands)	PRIOR	FY 25-26	FY 26-27	FY 27-28	FY 28-29	FY 29-30	FY 30-31	FUTURE	TOTAL
<b>Revenue</b>									
FDOT Funds	143,975	8,421	860	860	0	0	0	0	154,116
Florida Department of Environmental Protection	320	9,774	9,773	0	0	0	0	0	19,867
Future Financing	0	551,575	663,103	371,068	346,253	235,997	149,796	79,513	2,397,305
General Construction Overhead	12,597	0	0	0	0	0	0	0	12,597
Seaport - Tenant Financing	15,073	5,681	96,616	57,684	0	0	0	0	175,054
Seaport Bonds/Loans	657,440	227,341	89,734	0	0	15,000	0	0	989,515
US DOT	22,444	26,944	17,283	89,086	52,786	25,685	17,685	7,000	258,913
US Department of Environmental Protection Agency	2,264	0	0	0	0	0	0	0	2,264
US Department of Homeland Security	2,309	1,026	0	0	0	0	0	0	3,335
Total:	856,422	830,762	877,369	518,698	399,039	276,682	167,481	86,513	4,012,966
<b>Expenditures</b>									
<b>Strategic Area: TM</b>									
Seaport - Cargo Facility Improvements	10	0	0	99,000	114,000	53,000	23,100	10,890	300,000
Seaport - Dredging	109,850	1,000	0	0	0	0	0	0	110,850
<b>Strategic Area: ED</b>									
Seaport - Cargo Facility Improvements	64,872	40,881	96,563	30,700	33,350	16,749	13,585	0	296,700
Seaport - Cruise Terminal Renovations	2,505	6,400	7,833	0	0	0	0	0	16,738
Seaport - Infrastructure Improvements	221,788	121,715	167,138	149,844	146,775	137,366	98,176	0	1,042,802
Seaport - Miscellaneous Facility Improvements	192,337	238,701	193,979	66,481	16,898	25,535	4,620	0	738,551
Seaport - New Cruise Terminals	132,009	200,379	254,526	93,690	11,873	17,000	7,000	14,522	730,999
Seaport - New Port Facilities	2,500	0	76,330	30,183	12,500	5,487	0	0	127,000
Seaport - Resiliency Projects	121,914	203,680	1,000	1,000	1,000	1,000	4,000	43,601	377,195
Seaport - Roadway Improvements	2,148	352	16,000	16,000	16,000	16,000	16,000	17,500	100,000
Seaport - Security	3,202	2,854	1,000	1,000	1,000	1,000	1,000	0	11,056
Seaport - Specialty Equipment	2,855	12,500	55,000	23,400	21,700	3,545	0	0	119,000
Seaport - Transportation Improvements	432	2,300	8,000	7,400	23,943	0	0	0	42,075
Total:	856,422	830,762	877,369	518,698	399,039	276,682	167,481	86,513	4,012,966

## FY 2025-26 Adopted Budget and Multi-Year Capital Plan

### **FUNDED CAPITAL PROGRAMS**

(dollars in thousands)

#### **BULKHEAD REHABILITATION - BAYS 148-155 & 165-177**

**PROGRAM #: 2000004235**

DESCRIPTION: Repair and upgrade cargo berthing infrastructure to allow for more efficient crane operations

LOCATION: Dante B. Fascell Port of Miami-Dade

District Located: 5

Port of Miami

District(s) Served:

Countywide

REVENUE SCHEDULE:	PRIOR	2025-26	2026-27	2027-28	2028-29	2029-30	2030-31	FUTURE	TOTAL
Future Financing	0	2,368	15,000	1,200	0	0	0	0	18,568
Seaport Bonds/Loans	7,585	0	0	0	0	0	0	0	7,585
US DOT	4,115	3,932	0	0	0	0	0	0	8,047
<b>TOTAL REVENUES:</b>	<b>11,700</b>	<b>6,300</b>	<b>15,000</b>	<b>1,200</b>	<b>0</b>	<b>0</b>	<b>0</b>	<b>0</b>	<b>34,200</b>
EXPENDITURE SCHEDULE:	PRIOR	2025-26	2026-27	2027-28	2028-29	2029-30	2030-31	FUTURE	TOTAL
Construction	11,700	6,300	15,000	1,200	0	0	0	0	34,200
<b>TOTAL EXPENDITURES:</b>	<b>11,700</b>	<b>6,300</b>	<b>15,000</b>	<b>1,200</b>	<b>0</b>	<b>0</b>	<b>0</b>	<b>0</b>	<b>34,200</b>

#### **CARGO PROGRAM - RAIL & GATE EXPANSION**

**PROGRAM #: 2000002955**

DESCRIPTION: Construct additional rail capacity and increase cargo gate optimization to reduce traffic congestion at the Port

LOCATION: Dante B. Fascell Port of Miami-Dade

District Located: 5

Port of Miami

District(s) Served:

Countywide

REVENUE SCHEDULE:	PRIOR	2025-26	2026-27	2027-28	2028-29	2029-30	2030-31	FUTURE	TOTAL
Future Financing	0	0	3,050	0	22,843	0	0	0	25,893
Seaport Bonds/Loans	182	0	0	0	0	0	0	0	182
US DOT	250	2,300	4,950	7,400	1,100	0	0	0	16,000
<b>TOTAL REVENUES:</b>	<b>432</b>	<b>2,300</b>	<b>8,000</b>	<b>7,400</b>	<b>23,943</b>	<b>0</b>	<b>0</b>	<b>0</b>	<b>42,075</b>
EXPENDITURE SCHEDULE:	PRIOR	2025-26	2026-27	2027-28	2028-29	2029-30	2030-31	FUTURE	TOTAL
Construction	0	1,840	6,400	5,920	19,154	0	0	0	33,314
Planning and Design	432	460	1,600	1,480	4,789	0	0	0	8,761
<b>TOTAL EXPENDITURES:</b>	<b>432</b>	<b>2,300</b>	<b>8,000</b>	<b>7,400</b>	<b>23,943</b>	<b>0</b>	<b>0</b>	<b>0</b>	<b>42,075</b>

## FY 2025-26 Adopted Budget and Multi-Year Capital Plan

---

### CARGO YARD OPTIMIZATION

**PROGRAM #: 2000004018**

DESCRIPTION: Provide various infrastructure upgrades to include a new gate management system and yard optimization

LOCATION: Dante B. Fascell Port of Miami-Dade

District Located: 5

Port of Miami

District(s) Served:

Countywide

REVENUE SCHEDULE:	PRIOR	2025-26	2026-27	2027-28	2028-29	2029-30	2030-31	FUTURE	TOTAL
Future Financing	0	250	9,500	8,150	16,600	0	0	0	34,500
Seaport Bonds/Loans	500	0	0	0	0	0	0	0	500
<b>TOTAL REVENUES:</b>	<b>500</b>	<b>250</b>	<b>9,500</b>	<b>8,150</b>	<b>16,600</b>	<b>0</b>	<b>0</b>	<b>0</b>	<b>35,000</b>
EXPENDITURE SCHEDULE:	PRIOR	2025-26	2026-27	2027-28	2028-29	2029-30	2030-31	FUTURE	TOTAL
Construction	500	250	9,500	8,150	16,600	0	0	0	35,000
<b>TOTAL EXPENDITURES:</b>	<b>500</b>	<b>250</b>	<b>9,500</b>	<b>8,150</b>	<b>16,600</b>	<b>0</b>	<b>0</b>	<b>0</b>	<b>35,000</b>

### CONSTRUCTION SUPERVISION

**PROGRAM #: 6430061**

DESCRIPTION: Provide supervision of on-going construction projects at the Seaport

LOCATION: Dante B. Fascell Port of Miami-Dade

District Located: 5

Port of Miami

District(s) Served:

Countywide

REVENUE SCHEDULE:	PRIOR	2025-26	2026-27	2027-28	2028-29	2029-30	2030-31	FUTURE	TOTAL
Future Financing	0	9,785	10,079	10,381	10,692	11,013	11,343	0	63,293
General Construction Overhead	10,752	0	0	0	0	0	0	0	10,752
Seaport Bonds/Loans	32,718	0	0	0	0	0	0	0	32,718
<b>TOTAL REVENUES:</b>	<b>43,470</b>	<b>9,785</b>	<b>10,079</b>	<b>10,381</b>	<b>10,692</b>	<b>11,013</b>	<b>11,343</b>	<b>0</b>	<b>106,763</b>
EXPENDITURE SCHEDULE:	PRIOR	2025-26	2026-27	2027-28	2028-29	2029-30	2030-31	FUTURE	TOTAL
Construction	43,262	9,785	10,079	10,381	10,692	11,013	11,343	0	106,555
Planning and Design	208	0	0	0	0	0	0	0	208
<b>TOTAL EXPENDITURES:</b>	<b>43,470</b>	<b>9,785</b>	<b>10,079</b>	<b>10,381</b>	<b>10,692</b>	<b>11,013</b>	<b>11,343</b>	<b>0</b>	<b>106,763</b>

## FY 2025-26 Adopted Budget and Multi-Year Capital Plan

### CRUISE TERMINAL BERTH 10 - NEW

**PROGRAM #:** 2000001343

DESCRIPTION: Design and construct a new LEED Silver certified Berth 10 to facilitate additional cruise ships  
 LOCATION: Dante B. Fascell Port of Miami-Dade District Located: 5  
 Port of Miami District(s) Served: Countywide

REVENUE SCHEDULE:	PRIOR	2025-26	2026-27	2027-28	2028-29	2029-30	2030-31	FUTURE	TOTAL
Florida Department of Environmental Protection	0	9,774	9,773	0	0	0	0	0	19,547
Future Financing	0	12,226	66,813	64,336	4,873	10,000	0	0	158,248
Seaport Bonds/Loans	7,205	0	0	0	0	0	0	0	7,205
<b>TOTAL REVENUES:</b>	<b>7,205</b>	<b>22,000</b>	<b>76,586</b>	<b>64,336</b>	<b>4,873</b>	<b>10,000</b>	<b>0</b>	<b>0</b>	<b>185,000</b>
EXPENDITURE SCHEDULE:	PRIOR	2025-26	2026-27	2027-28	2028-29	2029-30	2030-31	FUTURE	TOTAL
Art Allowance	0	600	975	450	225	0	0	0	2,250
Construction	0	15,000	59,294	50,019	2,673	10,000	0	0	136,986
Furniture Fixtures and Equipment	0	0	1,000	1,000	1,000	0	0	0	3,000
Planning and Design	7,205	6,400	15,317	12,867	975	0	0	0	42,764
<b>TOTAL EXPENDITURES:</b>	<b>7,205</b>	<b>22,000</b>	<b>76,586</b>	<b>64,336</b>	<b>4,873</b>	<b>10,000</b>	<b>0</b>	<b>0</b>	<b>185,000</b>

### CRUISE TERMINAL G - NEW

**PROGRAM #:** 2000001291

DESCRIPTION: Design and construct a new LEED Silver certified cruise terminal to support expanding operations, including garage, terminal and related infrastructure  
 LOCATION: Dante B. Fascell Port of Miami-Dade District Located: 5  
 Port of Miami District(s) Served: Countywide

REVENUE SCHEDULE:	PRIOR	2025-26	2026-27	2027-28	2028-29	2029-30	2030-31	FUTURE	TOTAL
Future Financing	0	168,379	170,940	22,354	0	0	0	0	361,673
Seaport Bonds/Loans	14,327	0	0	0	0	0	0	0	14,327
<b>TOTAL REVENUES:</b>	<b>14,327</b>	<b>168,379</b>	<b>170,940</b>	<b>22,354</b>	<b>0</b>	<b>0</b>	<b>0</b>	<b>0</b>	<b>376,000</b>
EXPENDITURE SCHEDULE:	PRIOR	2025-26	2026-27	2027-28	2028-29	2029-30	2030-31	FUTURE	TOTAL
Art Allowance	0	2,548	2,548	0	0	0	0	0	5,096
Construction	13,979	157,020	159,581	21,354	0	0	0	0	351,934
Furniture Fixtures and Equipment	0	1,000	1,000	1,000	0	0	0	0	3,000
Planning and Design	348	7,811	7,811	0	0	0	0	0	15,970
<b>TOTAL EXPENDITURES:</b>	<b>14,327</b>	<b>168,379</b>	<b>170,940</b>	<b>22,354</b>	<b>0</b>	<b>0</b>	<b>0</b>	<b>0</b>	<b>376,000</b>

## FY 2025-26 Adopted Budget and Multi-Year Capital Plan

### CRUISE TERMINAL J - SEAWALL

**PROGRAM #: 642930**

DESCRIPTION: Upgrade and remodel Terminal J to attract luxury cruise operations by replacing carpet, installing new elevators and completing various terminal repair/upgrades

LOCATION: Dante B. Fascell Port of Miami-Dade District Located: 5  
Port of Miami District(s) Served: Countywide

REVENUE SCHEDULE:	PRIOR	2025-26	2026-27	2027-28	2028-29	2029-30	2030-31	FUTURE	TOTAL
Future Financing	0	0	5,225	0	0	0	0	0	5,225
Seaport Bonds/Loans	2,505	6,400	2,608	0	0	0	0	0	11,513
<b>TOTAL REVENUES:</b>	<b>2,505</b>	<b>6,400</b>	<b>7,833</b>	<b>0</b>	<b>0</b>	<b>0</b>	<b>0</b>	<b>0</b>	<b>16,738</b>
EXPENDITURE SCHEDULE:	PRIOR	2025-26	2026-27	2027-28	2028-29	2029-30	2030-31	FUTURE	TOTAL
Construction	2,000	5,120	6,266	0	0	0	0	0	13,386
Planning and Design	505	1,280	1,567	0	0	0	0	0	3,352
<b>TOTAL EXPENDITURES:</b>	<b>2,505</b>	<b>6,400</b>	<b>7,833</b>	<b>0</b>	<b>0</b>	<b>0</b>	<b>0</b>	<b>0</b>	<b>16,738</b>

### CRUISE TERMINALS AA AND AAA - NEW

**PROGRAM #: 2000000570**

DESCRIPTION: Design and construct new LEED Silver certified cruise terminals to support expanded operations of MSC Cruise Lines

LOCATION: Dante B. Fascell Port of Miami-Dade District Located: 5  
Port of Miami District(s) Served: Countywide

REVENUE SCHEDULE:	PRIOR	2025-26	2026-27	2027-28	2028-29	2029-30	2030-31	FUTURE	TOTAL
Future Financing	0	10,000	7,000	7,000	7,000	7,000	7,000	14,522	59,522
Seaport Bonds/Loans	110,477	0	0	0	0	0	0	0	110,477
<b>TOTAL REVENUES:</b>	<b>110,477</b>	<b>10,000</b>	<b>7,000</b>	<b>7,000</b>	<b>7,000</b>	<b>7,000</b>	<b>7,000</b>	<b>14,522</b>	<b>169,999</b>
EXPENDITURE SCHEDULE:	PRIOR	2025-26	2026-27	2027-28	2028-29	2029-30	2030-31	FUTURE	TOTAL
Art Allowance	2,000	0	0	0	0	0	0	0	2,000
Construction	80,022	10,000	7,000	7,000	7,000	7,000	7,000	14,522	139,544
Furniture Fixtures and Equipment	6,062	0	0	0	0	0	0	0	6,062
Infrastructure Improvements	298	0	0	0	0	0	0	0	298
Planning and Design	22,095	0	0	0	0	0	0	0	22,095
<b>TOTAL EXPENDITURES:</b>	<b>110,477</b>	<b>10,000</b>	<b>7,000</b>	<b>7,000</b>	<b>7,000</b>	<b>7,000</b>	<b>7,000</b>	<b>14,522</b>	<b>169,999</b>

## FY 2025-26 Adopted Budget and Multi-Year Capital Plan

### DREDGE III

**PROGRAM #: 649730**

DESCRIPTION: Dredge southern part of Lummus Island to a depth of 50 feet allowing port capacity for larger ships

LOCATION: Dante B. Fascell Port of Miami-Dade

District Located: 5

Port of Miami

District(s) Served:

Countywide

REVENUE SCHEDULE:	PRIOR	2025-26	2026-27	2027-28	2028-29	2029-30	2030-31	FUTURE	TOTAL
FDOT Funds	109,600	0	0	0	0	0	0	0	109,600
Future Financing	0	1,000	0	0	0	0	0	0	1,000
Seaport Bonds/Loans	250	0	0	0	0	0	0	0	250
<b>TOTAL REVENUES:</b>	<b>109,850</b>	<b>1,000</b>	<b>0</b>	<b>0</b>	<b>0</b>	<b>0</b>	<b>0</b>	<b>0</b>	<b>110,850</b>
EXPENDITURE SCHEDULE:	PRIOR	2025-26	2026-27	2027-28	2028-29	2029-30	2030-31	FUTURE	TOTAL
Construction	100,250	800	0	0	0	0	0	0	101,050
Planning and Design	9,600	200	0	0	0	0	0	0	9,800
<b>TOTAL EXPENDITURES:</b>	<b>109,850</b>	<b>1,000</b>	<b>0</b>	<b>0</b>	<b>0</b>	<b>0</b>	<b>0</b>	<b>0</b>	<b>110,850</b>

### FEDERAL INSPECTION FACILITY

**PROGRAM #: 641540**

DESCRIPTION: Design and construct a new LEED Silver certified Federal Inspection facility for Immigration and Customs

Enforcement Operations

LOCATION: Dante B. Fascell Port of Miami-Dade

District Located: 5

Port of Miami

District(s) Served:

Countywide

REVENUE SCHEDULE:	PRIOR	2025-26	2026-27	2027-28	2028-29	2029-30	2030-31	FUTURE	TOTAL
Future Financing	0	0	4,796	8,797	16,898	25,535	4,620	0	60,646
Seaport Bonds/Loans	354	0	0	0	0	0	0	0	354
<b>TOTAL REVENUES:</b>	<b>354</b>	<b>0</b>	<b>4,796</b>	<b>8,797</b>	<b>16,898</b>	<b>25,535</b>	<b>4,620</b>	<b>0</b>	<b>61,000</b>
EXPENDITURE SCHEDULE:	PRIOR	2025-26	2026-27	2027-28	2028-29	2029-30	2030-31	FUTURE	TOTAL
Art Allowance	0	0	78	0	0	0	0	0	78
Construction	0	0	4,474	7,038	12,518	19,428	2,696	0	46,154
Furniture Fixtures and Equipment	0	0	0	0	1,000	1,000	1,000	0	3,000
Planning and Design	354	0	244	1,759	3,380	5,107	924	0	11,768
<b>TOTAL EXPENDITURES:</b>	<b>354</b>	<b>0</b>	<b>4,796</b>	<b>8,797</b>	<b>16,898</b>	<b>25,535</b>	<b>4,620</b>	<b>0</b>	<b>61,000</b>



## FY 2025-26 Adopted Budget and Multi-Year Capital Plan

### FUEL FACILITY ACQUISITION

**PROGRAM #: 2000005455**

DESCRIPTION: Acquire the fuel facility located on Fisher Island which will provide fuel to the maritime industry that is critical to Port and County operations

LOCATION: 1 Fisher Island Dr  
Miami Beach

District Located: 5  
District(s) Served: Countywide

REVENUE SCHEDULE:	PRIOR	2025-26	2026-27	2027-28	2028-29	2029-30	2030-31	FUTURE	TOTAL
Future Financing	0	200,000	0	0	0	0	0	0	200,000
<b>TOTAL REVENUES:</b>	<b>0</b>	<b>200,000</b>	<b>0</b>	<b>0</b>	<b>0</b>	<b>0</b>	<b>0</b>	<b>0</b>	<b>200,000</b>
EXPENDITURE SCHEDULE:	PRIOR	2025-26	2026-27	2027-28	2028-29	2029-30	2030-31	FUTURE	TOTAL
Land Acquisition/Improvements	0	200,000	0	0	0	0	0	0	200,000
<b>TOTAL EXPENDITURES:</b>	<b>0</b>	<b>200,000</b>	<b>0</b>	<b>0</b>	<b>0</b>	<b>0</b>	<b>0</b>	<b>0</b>	<b>200,000</b>

### GANTRY CRANES

**PROGRAM #: 2000000131**

DESCRIPTION: Purchase four additional post panamax gantry cranes (with option for up to four additional cranes) for increased cargo traffic to bring the total number of cranes to 17

LOCATION: Dante B. Fascell Port of Miami-Dade  
Port of Miami

District Located: 5  
District(s) Served: Countywide

REVENUE SCHEDULE:	PRIOR	2025-26	2026-27	2027-28	2028-29	2029-30	2030-31	FUTURE	TOTAL
Future Financing	0	12,500	55,000	23,400	21,700	3,545	0	0	116,145
Seaport Bonds/Loans	2,855	0	0	0	0	0	0	0	2,855
<b>TOTAL REVENUES:</b>	<b>2,855</b>	<b>12,500</b>	<b>55,000</b>	<b>23,400</b>	<b>21,700</b>	<b>3,545</b>	<b>0</b>	<b>0</b>	<b>119,000</b>
EXPENDITURE SCHEDULE:	PRIOR	2025-26	2026-27	2027-28	2028-29	2029-30	2030-31	FUTURE	TOTAL
Major Machinery and Equipment	2,855	12,500	55,000	23,400	21,700	3,545	0	0	119,000
<b>TOTAL EXPENDITURES:</b>	<b>2,855</b>	<b>12,500</b>	<b>55,000</b>	<b>23,400</b>	<b>21,700</b>	<b>3,545</b>	<b>0</b>	<b>0</b>	<b>119,000</b>

### INFRASTRUCTURE IMPROVEMENTS - CHANNEL MODIFICATIONS

**PROGRAM #: 2000000028**

DESCRIPTION: Provide infrastructure improvements to Seaport channels as a result of the new terminal additions at the Port of Miami

LOCATION: Dante B. Fascell Port of Miami-Dade  
Port of Miami

District Located: 5  
District(s) Served: Countywide

REVENUE SCHEDULE:	PRIOR	2025-26	2026-27	2027-28	2028-29	2029-30	2030-31	FUTURE	TOTAL
FDOT Funds	150	0	50	150	0	0	0	0	350
Future Financing	0	0	367	2,350	0	0	0	0	2,717
Seaport Bonds/Loans	1,933	0	0	0	0	0	0	0	1,933
<b>TOTAL REVENUES:</b>	<b>2,083</b>	<b>0</b>	<b>417</b>	<b>2,500</b>	<b>0</b>	<b>0</b>	<b>0</b>	<b>0</b>	<b>5,000</b>
EXPENDITURE SCHEDULE:	PRIOR	2025-26	2026-27	2027-28	2028-29	2029-30	2030-31	FUTURE	TOTAL
Construction	350	0	334	2,150	0	0	0	0	2,834
Planning and Design	1,733	0	83	350	0	0	0	0	2,166
<b>TOTAL EXPENDITURES:</b>	<b>2,083</b>	<b>0</b>	<b>417</b>	<b>2,500</b>	<b>0</b>	<b>0</b>	<b>0</b>	<b>0</b>	<b>5,000</b>

## FY 2025-26 Adopted Budget and Multi-Year Capital Plan

### INFRASTRUCTURE IMPROVEMENTS - CONTAINER YARD (SEABOARD)

**PROGRAM #: 644520**

DESCRIPTION: Provide drainage improvements and various other improvements in the container yard area  
 LOCATION: Dante B. Fascell Port of Miami-Dade District Located: 5  
 Port of Miami District(s) Served: Countywide

REVENUE SCHEDULE:	PRIOR	2025-26	2026-27	2027-28	2028-29	2029-30	2030-31	FUTURE	TOTAL
Future Financing	0	0	14,064	9,664	5,064	5,064	7,900	0	41,756
Seaport Bonds/Loans	2,816	0	0	0	0	0	0	0	2,816
US DOT	2,000	0	1,686	1,686	1,686	1,685	1,685	0	10,428
<b>TOTAL REVENUES:</b>	<b>4,816</b>	<b>0</b>	<b>15,750</b>	<b>11,350</b>	<b>6,750</b>	<b>6,749</b>	<b>9,585</b>	<b>0</b>	<b>55,000</b>
EXPENDITURE SCHEDULE:	PRIOR	2025-26	2026-27	2027-28	2028-29	2029-30	2030-31	FUTURE	TOTAL
Construction	4,000	0	12,950	9,430	5,750	5,749	8,018	0	45,897
Major Machinery and Equipment	2	0	0	0	0	0	0	0	2
Planning and Design	814	0	2,800	1,920	1,000	1,000	1,567	0	9,101
<b>TOTAL EXPENDITURES:</b>	<b>4,816</b>	<b>0</b>	<b>15,750</b>	<b>11,350</b>	<b>6,750</b>	<b>6,749</b>	<b>9,585</b>	<b>0</b>	<b>55,000</b>

### INFRASTRUCTURE IMPROVEMENTS - CRUISE CAMPUS

**PROGRAM #: 2000001290**

DESCRIPTION: Construct an LEED Silver certified Cruise Campus which includes the construction of the Royal Caribbean Cruise Line Global Headquarters as well as provide infrastructure improvements including but not limited to road work and relocations for future buildings constructed by Royal Caribbean Cruise Line  
 LOCATION: Dante B. Fascell Port of Miami-Dade District Located: 5  
 Port of Miami District(s) Served: Countywide

REVENUE SCHEDULE:	PRIOR	2025-26	2026-27	2027-28	2028-29	2029-30	2030-31	FUTURE	TOTAL
Seaport - Tenant Financing	11,754	0	92,316	57,684	0	0	0	0	161,754
Seaport Bonds/Loans	165,531	213,589	80,126	0	0	0	0	0	459,246
<b>TOTAL REVENUES:</b>	<b>177,285</b>	<b>213,589</b>	<b>172,442</b>	<b>57,684</b>	<b>0</b>	<b>0</b>	<b>0</b>	<b>0</b>	<b>621,000</b>
EXPENDITURE SCHEDULE:	PRIOR	2025-26	2026-27	2027-28	2028-29	2029-30	2030-31	FUTURE	TOTAL
Art Allowance	2,000	800	126	0	0	0	0	0	2,926
Construction	137,285	170,071	137,832	46,147	0	0	0	0	491,335
Planning and Design	38,000	42,718	34,484	11,537	0	0	0	0	126,739
<b>TOTAL EXPENDITURES:</b>	<b>177,285</b>	<b>213,589</b>	<b>172,442</b>	<b>57,684</b>	<b>0</b>	<b>0</b>	<b>0</b>	<b>0</b>	<b>621,000</b>

## FY 2025-26 Adopted Budget and Multi-Year Capital Plan

### INFRASTRUCTURE IMPROVEMENTS - NORTH BULKHEAD REHABILITATION AND REPLACEMENT

PROGRAM #: 644300

DESCRIPTION: Provide repairs and improvements to the north bulkhead which is expected to add at least 75 years of life to the Port's cruise business; included in the north bulkhead rehabilitation projects are cruise terminals B, C, D, E, F and G

LOCATION: Dante B. Fascell Port of Miami-Dade  
Port of Miami

District Located: 5  
District(s) Served: Countywide

REVENUE SCHEDULE:	PRIOR	2025-26	2026-27	2027-28	2028-29	2029-30	2030-31	FUTURE	TOTAL
Florida Department of Environmental Protection	320	0	0	0	0	0	0	0	320
Future Financing	0	31,000	82,791	86,714	86,714	86,714	54,833	0	428,766
Seaport Bonds/Loans	16,696	7,000	7,000	0	0	0	0	0	30,696
<b>TOTAL REVENUES:</b>	<b>17,016</b>	<b>38,000</b>	<b>89,791</b>	<b>86,714</b>	<b>86,714</b>	<b>86,714</b>	<b>54,833</b>	<b>0</b>	<b>459,782</b>
EXPENDITURE SCHEDULE:	PRIOR	2025-26	2026-27	2027-28	2028-29	2029-30	2030-31	FUTURE	TOTAL
Construction	16,660	38,000	89,791	86,714	86,714	86,714	54,833	0	459,426
Infrastructure Improvements	36	0	0	0	0	0	0	0	36
Planning and Design	320	0	0	0	0	0	0	0	320
<b>TOTAL EXPENDITURES:</b>	<b>17,016</b>	<b>38,000</b>	<b>89,791</b>	<b>86,714</b>	<b>86,714</b>	<b>86,714</b>	<b>54,833</b>	<b>0</b>	<b>459,782</b>

### INFRASTRUCTURE IMPROVEMENTS - PASSENGER BOARDING BRIDGES

PROGRAM #: 2000001344

DESCRIPTION: Purchase passenger boarding bridges for various terminals throughout the port

LOCATION: Dante B. Fascell Port of Miami-Dade  
Port of Miami

District Located: 5  
District(s) Served: Countywide

REVENUE SCHEDULE:	PRIOR	2025-26	2026-27	2027-28	2028-29	2029-30	2030-31	FUTURE	TOTAL
FDOT Funds	0	2,300	0	0	0	0	0	0	2,300
Future Financing	0	7,661	15,199	12,867	13,709	7,046	0	0	56,482
Seaport Bonds/Loans	11,750	0	0	0	0	0	0	0	11,750
<b>TOTAL REVENUES:</b>	<b>11,750</b>	<b>9,961</b>	<b>15,199</b>	<b>12,867</b>	<b>13,709</b>	<b>7,046</b>	<b>0</b>	<b>0</b>	<b>70,532</b>
EXPENDITURE SCHEDULE:	PRIOR	2025-26	2026-27	2027-28	2028-29	2029-30	2030-31	FUTURE	TOTAL
Construction	0	2,300	0	0	0	0	0	0	2,300
Major Machinery and Equipment	11,750	7,661	15,199	12,867	13,709	7,046	0	0	68,232
<b>TOTAL EXPENDITURES:</b>	<b>11,750</b>	<b>9,961</b>	<b>15,199</b>	<b>12,867</b>	<b>13,709</b>	<b>7,046</b>	<b>0</b>	<b>0</b>	<b>70,532</b>

## FY 2025-26 Adopted Budget and Multi-Year Capital Plan

### INFRASTRUCTURE IMPROVEMENTS - PORT WIDE

**PROGRAM #: 645430**

DESCRIPTION: Provide infrastructure improvements in various areas of the Port including drainage, wayfinding port beautification projects, dredging, etc.

LOCATION: Dante B. Fascell Port of Miami-Dade  
Port of Miami

District Located: 5  
District(s) Served: Countywide

REVENUE SCHEDULE:	PRIOR	2025-26	2026-27	2027-28	2028-29	2029-30	2030-31	FUTURE	TOTAL
FDOT Funds	837	810	810	710	0	0	0	0	3,167
Future Financing	0	40,033	32,783	32,883	33,593	32,593	32,000	0	203,885
General Construction Overhead	1,845	0	0	0	0	0	0	0	1,845
Seaport Bonds/Loans	108,803	0	0	0	0	0	0	0	108,803
<b>TOTAL REVENUES:</b>	<b>111,485</b>	<b>40,843</b>	<b>33,593</b>	<b>33,593</b>	<b>33,593</b>	<b>32,593</b>	<b>32,000</b>	<b>0</b>	<b>317,700</b>
EXPENDITURE SCHEDULE:	PRIOR	2025-26	2026-27	2027-28	2028-29	2029-30	2030-31	FUTURE	TOTAL
Art Allowance	461	0	0	0	0	0	0	0	461
Construction	82,686	32,674	26,874	26,874	26,874	26,074	25,600	0	247,656
Infrastructure Improvements	6,041	0	0	0	0	0	0	0	6,041
Planning and Design	22,297	8,169	6,719	6,719	6,719	6,519	6,400	0	63,542
<b>TOTAL EXPENDITURES:</b>	<b>111,485</b>	<b>40,843</b>	<b>33,593</b>	<b>33,593</b>	<b>33,593</b>	<b>32,593</b>	<b>32,000</b>	<b>0</b>	<b>317,700</b>

### INFRASTRUCTURE IMPROVEMENTS - SOUTH BULKHEAD REHABILITATION

**PROGRAM #: 646300**

DESCRIPTION: Provide repairs and improvements to the Port's south bulkhead

LOCATION: Dante B. Fascell Port of Miami-Dade  
Port of Miami

District Located: 5  
District(s) Served: Countywide

REVENUE SCHEDULE:	PRIOR	2025-26	2026-27	2027-28	2028-29	2029-30	2030-31	FUTURE	TOTAL
Future Financing	0	7,252	0	0	0	0	0	0	7,252
Seaport Bonds/Loans	12,899	0	0	0	0	0	0	0	12,899
<b>TOTAL REVENUES:</b>	<b>12,899</b>	<b>7,252</b>	<b>0</b>	<b>0</b>	<b>0</b>	<b>0</b>	<b>0</b>	<b>0</b>	<b>20,151</b>
EXPENDITURE SCHEDULE:	PRIOR	2025-26	2026-27	2027-28	2028-29	2029-30	2030-31	FUTURE	TOTAL
Construction	10,319	5,802	0	0	0	0	0	0	16,121
Planning and Design	2,580	1,450	0	0	0	0	0	0	4,030
<b>TOTAL EXPENDITURES:</b>	<b>12,899</b>	<b>7,252</b>	<b>0</b>	<b>0</b>	<b>0</b>	<b>0</b>	<b>0</b>	<b>0</b>	<b>20,151</b>

## FY 2025-26 Adopted Budget and Multi-Year Capital Plan

### INFRASTRUCTURE IMPROVEMENTS - SOUTH FLORIDA CONTAINER TERMINAL AND NEW GARAGE

**PROGRAM #: 647150**

DESCRIPTION: Construct a new garage; provide drainage improvements and various other improvements to the cargo yard  
 LOCATION: Dante B. Fascell Port of Miami-Dade District Located: 5  
 Port of Miami District(s) Served: 13,Countywide

REVENUE SCHEDULE:	PRIOR	2025-26	2026-27	2027-28	2028-29	2029-30	2030-31	FUTURE	TOTAL
FDOT Funds	9,366	3,965	0	0	0	0	0	0	13,331
Future Financing	0	5,711	10,000	10,000	10,000	10,000	4,000	0	49,711
Seaport Bonds/Loans	28,020	0	0	0	0	0	0	0	28,020
US DOT	3,033	5,905	0	0	0	0	0	0	8,938
<b>TOTAL REVENUES:</b>	<b>40,419</b>	<b>15,581</b>	<b>10,000</b>	<b>10,000</b>	<b>10,000</b>	<b>10,000</b>	<b>4,000</b>	<b>0</b>	<b>100,000</b>
EXPENDITURE SCHEDULE:	PRIOR	2025-26	2026-27	2027-28	2028-29	2029-30	2030-31	FUTURE	TOTAL
Construction	25,593	8,500	8,000	8,000	8,000	8,000	3,200	0	69,293
Major Machinery and Equipment	9,366	3,965	0	0	0	0	0	0	13,331
Planning and Design	5,460	3,116	2,000	2,000	2,000	2,000	800	0	17,376
<b>TOTAL EXPENDITURES:</b>	<b>40,419</b>	<b>15,581</b>	<b>10,000</b>	<b>10,000</b>	<b>10,000</b>	<b>10,000</b>	<b>4,000</b>	<b>0</b>	<b>100,000</b>

### INFRASTRUCTURE IMPROVEMENTS - WATER AND SEWER UPGRADES

**PROGRAM #: 647720**

DESCRIPTION: Upgrade the Port's water and sewer system for new services  
 LOCATION: Dante B. Fascell Port of Miami-Dade District Located: 5  
 Port of Miami District(s) Served: Countywide

REVENUE SCHEDULE:	PRIOR	2025-26	2026-27	2027-28	2028-29	2029-30	2030-31	FUTURE	TOTAL
FDOT Funds	88	87	0	0	0	0	0	0	175
Future Financing	0	15,787	18,059	3,789	2,067	0	0	0	39,702
Seaport Bonds/Loans	22,997	0	0	0	0	0	0	0	22,997
<b>TOTAL REVENUES:</b>	<b>23,085</b>	<b>15,874</b>	<b>18,059</b>	<b>3,789</b>	<b>2,067</b>	<b>0</b>	<b>0</b>	<b>0</b>	<b>62,874</b>
EXPENDITURE SCHEDULE:	PRIOR	2025-26	2026-27	2027-28	2028-29	2029-30	2030-31	FUTURE	TOTAL
Construction	20,199	13,299	14,447	3,031	1,054	0	0	0	52,030
Planning and Design	2,886	2,575	3,612	758	1,013	0	0	0	10,844
<b>TOTAL EXPENDITURES:</b>	<b>23,085</b>	<b>15,874</b>	<b>18,059</b>	<b>3,789</b>	<b>2,067</b>	<b>0</b>	<b>0</b>	<b>0</b>	<b>62,874</b>

## FY 2025-26 Adopted Budget and Multi-Year Capital Plan

### INLAND PORT DEVELOPMENT - CONTINUATION OF PHASE 1

**PROGRAM #:** 2000000572

DESCRIPTION: Continue Inland Port Phase 1 development of the container storage and transfer staging areas  
 LOCATION: Dante B. Fascell Port of Miami-Dade District Located: 5  
 Port of Miami District(s) Served: Countywide

REVENUE SCHEDULE:	PRIOR	2025-26	2026-27	2027-28	2028-29	2029-30	2030-31	FUTURE	TOTAL
Future Financing	0	17,083	44,647	0	0	0	0	0	61,730
Seaport Bonds/Loans	5,770	0	0	0	0	0	0	0	5,770
US DOT	1,667	1,667	1,666	0	0	0	0	0	5,000
<b>TOTAL REVENUES:</b>	<b>7,437</b>	<b>18,750</b>	<b>46,313</b>	<b>0</b>	<b>0</b>	<b>0</b>	<b>0</b>	<b>0</b>	<b>72,500</b>
EXPENDITURE SCHEDULE:	PRIOR	2025-26	2026-27	2027-28	2028-29	2029-30	2030-31	FUTURE	TOTAL
Construction	0	15,000	37,050	0	0	0	0	0	52,050
Planning and Design	7,437	3,750	9,263	0	0	0	0	0	20,450
<b>TOTAL EXPENDITURES:</b>	<b>7,437</b>	<b>18,750</b>	<b>46,313</b>	<b>0</b>	<b>0</b>	<b>0</b>	<b>0</b>	<b>0</b>	<b>72,500</b>

### INLAND PORT DEVELOPMENT- PHASE II - IV

**PROGRAM #:** 2000004236

DESCRIPTION: Continue to plan and develop additional facilities and acreage in an off-dock logistics yard  
 LOCATION: Dante B. Fascell Port of Miami-Dade District Located: 5  
 Port of Miami District(s) Served: Countywide

REVENUE SCHEDULE:	PRIOR	2025-26	2026-27	2027-28	2028-29	2029-30	2030-31	FUTURE	TOTAL
Future Financing	0	0	0	19,000	64,000	14,000	7,100	3,890	107,990
Seaport Bonds/Loans	10	0	0	0	0	15,000	0	0	15,010
US DOT	0	0	0	80,000	50,000	24,000	16,000	7,000	177,000
<b>TOTAL REVENUES:</b>	<b>10</b>	<b>0</b>	<b>0</b>	<b>99,000</b>	<b>114,000</b>	<b>53,000</b>	<b>23,100</b>	<b>10,890</b>	<b>300,000</b>
EXPENDITURE SCHEDULE:	PRIOR	2025-26	2026-27	2027-28	2028-29	2029-30	2030-31	FUTURE	TOTAL
Construction	0	0	0	79,200	91,200	42,400	20,100	10,890	243,790
Planning and Design	10	0	0	19,800	22,800	10,600	3,000	0	56,210
<b>TOTAL EXPENDITURES:</b>	<b>10</b>	<b>0</b>	<b>0</b>	<b>99,000</b>	<b>114,000</b>	<b>53,000</b>	<b>23,100</b>	<b>10,890</b>	<b>300,000</b>

## FY 2025-26 Adopted Budget and Multi-Year Capital Plan

### INSPECTION AND FUMIGATION FACILITIES

**PROGRAM #:** 2000001418

DESCRIPTION: Construct a LEED Silver certified fumigation and cold chain processing center  
 LOCATION: Dante B. Fascell Port of Miami-Dade District Located: 5  
 Port of Miami District(s) Served: Countywide

REVENUE SCHEDULE:	PRIOR	2025-26	2026-27	2027-28	2028-29	2029-30	2030-31	FUTURE	TOTAL
Future Financing	0	6,291	3,460	0	0	0	0	0	9,751
Seaport - Tenant Financing	3,319	5,681	4,300	0	0	0	0	0	13,300
US DOT	11,379	13,140	8,981	0	0	0	0	0	33,500
<b>TOTAL REVENUES:</b>	<b>14,698</b>	<b>25,112</b>	<b>16,741</b>	<b>0</b>	<b>0</b>	<b>0</b>	<b>0</b>	<b>0</b>	<b>56,551</b>
EXPENDITURE SCHEDULE:	PRIOR	2025-26	2026-27	2027-28	2028-29	2029-30	2030-31	FUTURE	TOTAL
Art Allowance	0	19	19	0	0	0	0	0	38
Construction	5,689	20,071	13,374	0	0	0	0	0	39,134
Planning and Design	9,009	5,022	3,348	0	0	0	0	0	17,379
<b>TOTAL EXPENDITURES:</b>	<b>14,698</b>	<b>25,112</b>	<b>16,741</b>	<b>0</b>	<b>0</b>	<b>0</b>	<b>0</b>	<b>0</b>	<b>56,551</b>

### PORT ADMINISTRATION FACILITY

**PROGRAM #:** 2000004017

DESCRIPTION: Replace port offices and port services currently provided in World Trade Center being demolished to construct new Cruise Terminal G; the new offices will be LEED Silver certified  
 LOCATION: Dante B. Fascell Port of Miami-Dade District Located: 5  
 Port of Miami District(s) Served: Countywide

REVENUE SCHEDULE:	PRIOR	2025-26	2026-27	2027-28	2028-29	2029-30	2030-31	FUTURE	TOTAL
Future Financing	0	0	76,330	30,183	12,500	5,487	0	0	124,500
Seaport Bonds/Loans	2,500	0	0	0	0	0	0	0	2,500
<b>TOTAL REVENUES:</b>	<b>2,500</b>	<b>0</b>	<b>76,330</b>	<b>30,183</b>	<b>12,500</b>	<b>5,487</b>	<b>0</b>	<b>0</b>	<b>127,000</b>
EXPENDITURE SCHEDULE:	PRIOR	2025-26	2026-27	2027-28	2028-29	2029-30	2030-31	FUTURE	TOTAL
Art Allowance	0	0	750	900	172	0	0	0	1,822
Construction	0	0	60,262	22,246	8,828	3,390	0	0	94,726
Furniture Fixtures and Equipment	0	0	0	1,000	1,000	1,000	0	0	3,000
Planning and Design	2,500	0	15,318	6,037	2,500	1,097	0	0	27,452
<b>TOTAL EXPENDITURES:</b>	<b>2,500</b>	<b>0</b>	<b>76,330</b>	<b>30,183</b>	<b>12,500</b>	<b>5,487</b>	<b>0</b>	<b>0</b>	<b>127,000</b>

## FY 2025-26 Adopted Budget and Multi-Year Capital Plan

### PORT WIDE SECURITY ENHANCEMENTS

**PROGRAM #: 2000002759**

DESCRIPTION: Purchase marine vessels for the Harbor Patrol Unit, CCTV, signage and other security enhancements

LOCATION: Dante B. Fascell Port of Miami-Dade

District Located: 5

Port of Miami

District(s) Served:

Countywide

REVENUE SCHEDULE:	PRIOR	2025-26	2026-27	2027-28	2028-29	2029-30	2030-31	FUTURE	TOTAL
FDOT Funds	221	0	0	0	0	0	0	0	221
Future Financing	0	1,828	1,000	1,000	1,000	1,000	1,000	0	6,828
Seaport Bonds/Loans	672	0	0	0	0	0	0	0	672
US Department of Homeland Security	2,309	1,026	0	0	0	0	0	0	3,335
<b>TOTAL REVENUES:</b>	<b>3,202</b>	<b>2,854</b>	<b>1,000</b>	<b>1,000</b>	<b>1,000</b>	<b>1,000</b>	<b>1,000</b>	<b>0</b>	<b>11,056</b>
EXPENDITURE SCHEDULE:	PRIOR	2025-26	2026-27	2027-28	2028-29	2029-30	2030-31	FUTURE	TOTAL
Automobiles/Vehicles	866	0	0	0	0	0	0	0	866
Construction	945	0	0	0	0	0	0	0	945
Furniture Fixtures and Equipment	221	0	0	0	0	0	0	0	221
Infrastructure Improvements	1,170	2,854	1,000	1,000	1,000	1,000	1,000	0	9,024
<b>TOTAL EXPENDITURES:</b>	<b>3,202</b>	<b>2,854</b>	<b>1,000</b>	<b>1,000</b>	<b>1,000</b>	<b>1,000</b>	<b>1,000</b>	<b>0</b>	<b>11,056</b>

### ROADWAY IMPROVEMENTS - TRANSPORTATION MASTER PLAN

**PROGRAM #: 2000004237**

DESCRIPTION: Develop roadway expansion and improvement projects to enable the Seaport to manage increased cargo and cruise traffic

LOCATION: Dante B. Fascell Port of Miami-Dade

District Located: 5

Port of Miami

District(s) Served:

Countywide

REVENUE SCHEDULE:	PRIOR	2025-26	2026-27	2027-28	2028-29	2029-30	2030-31	FUTURE	TOTAL
Future Financing	0	0	16,000	16,000	16,000	16,000	16,000	17,500	97,500
Seaport Bonds/Loans	2,148	352	0	0	0	0	0	0	2,500
<b>TOTAL REVENUES:</b>	<b>2,148</b>	<b>352</b>	<b>16,000</b>	<b>16,000</b>	<b>16,000</b>	<b>16,000</b>	<b>16,000</b>	<b>17,500</b>	<b>100,000</b>
EXPENDITURE SCHEDULE:	PRIOR	2025-26	2026-27	2027-28	2028-29	2029-30	2030-31	FUTURE	TOTAL
Construction	2,148	352	16,000	16,000	16,000	16,000	16,000	17,500	100,000
<b>TOTAL EXPENDITURES:</b>	<b>2,148</b>	<b>352</b>	<b>16,000</b>	<b>16,000</b>	<b>16,000</b>	<b>16,000</b>	<b>16,000</b>	<b>17,500</b>	<b>100,000</b>



## FY 2025-26 Adopted Budget and Multi-Year Capital Plan

### SHORE POWER

**PROGRAM #: 2000001675**

DESCRIPTION: Provide shore power to all cruise terminals which will allow ships to turn off their primary engines while docked

LOCATION: Dante B. Fascell Port of Miami-Dade  
Port of Miami

District Located: 5  
District(s) Served: Countywide

REVENUE SCHEDULE:	PRIOR	2025-26	2026-27	2027-28	2028-29	2029-30	2030-31	FUTURE	TOTAL
FDOT Funds	23,713	1,259	0	0	0	0	0	0	24,972
Future Financing	0	2,421	1,000	1,000	1,000	1,000	4,000	43,601	54,022
Seaport Bonds/Loans	95,937	0	0	0	0	0	0	0	95,937
US Department of Environmental Protection Agency	2,264	0	0	0	0	0	0	0	2,264
<b>TOTAL REVENUES:</b>	<b>121,914</b>	<b>3,680</b>	<b>1,000</b>	<b>1,000</b>	<b>1,000</b>	<b>1,000</b>	<b>4,000</b>	<b>43,601</b>	<b>177,195</b>
EXPENDITURE SCHEDULE:	PRIOR	2025-26	2026-27	2027-28	2028-29	2029-30	2030-31	FUTURE	TOTAL
Construction	97,531	2,944	800	800	800	800	3,200	34,881	141,756
Planning and Design	24,383	736	200	200	200	200	800	8,720	35,439
<b>TOTAL EXPENDITURES:</b>	<b>121,914</b>	<b>3,680</b>	<b>1,000</b>	<b>1,000</b>	<b>1,000</b>	<b>1,000</b>	<b>4,000</b>	<b>43,601</b>	<b>177,195</b>

### UNFUNDED CAPITAL PROGRAMS

#### PROGRAM NAME

EAST END - DEVELOPMENT  
ELECTRICAL CAPACITY - INCREASE  
HARBOR ENTRANCE AND SOUTH CHANNEL - DREDGE EXPANSION  
SHORE POWER - CARGO  
SOUTHSIDE - CRUISE TERMINAL K  
SOUTHWEST CORNER - DEVELOPMENT  
TRANSPORTATION MASTERPLAN - IMPROVEMENTS

#### LOCATION

Dante B. Fascell Port of Miami-Dade  
Dante B. Fascell Port of Miami-Dade  
Dante B. Fascell Port of Miami-Dade  
Dante B. Fascell Port of Miami-Dade  
Dante B. Fascell Port of Miami-Dade  
Dante B. Fascell Port of Miami-Dade  
Dante B. Fascell Port of Miami-Dade

(dollars in thousands)  
**ESTIMATED PROGRAM COST**

**UNFUNDED TOTAL 1,698,000**