

## FY 2025-26 Proposed Budget and Multi-Year Capital Plan

### Environmental Resources Management

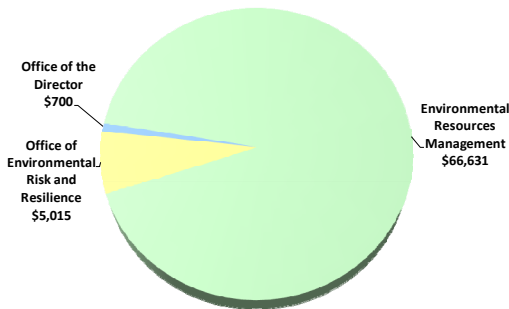
The Department of Environmental Resources Management (DERM) manages today's growing needs while protecting our environment for tomorrow through responsible governance, smart policy, and resource protection. DERM's authority and responsibility are rooted in both comprehensive local environmental regulation as well as State and Federally mandated legislation. Programs are designed to manage air, water, and land resources for the health, safety, and enjoyment of current and future residents and visitors.

As part of the Neighborhood and Infrastructure strategic area, the Department oversees protection of our air, water and soil resources, including protection of the Biscayne Aquifer, our sole source of drinking water; responds to complaints regarding pollution; oversees clean-up of contaminated soil; protects, restores and enhances natural areas and monitors environmental resources; manages beach renourishment; and acquires and protects environmentally endangered lands. In addition, the Department is responsible for overseeing State and Federal mandates, consent decrees, and permits, as well as proactively engaging all County departments, as well as other jurisdictions and stakeholders, to plan and execute strategies to address the most pressing environmental threats to Miami-Dade County.

### FY 2025-26 Proposed Operating Budget

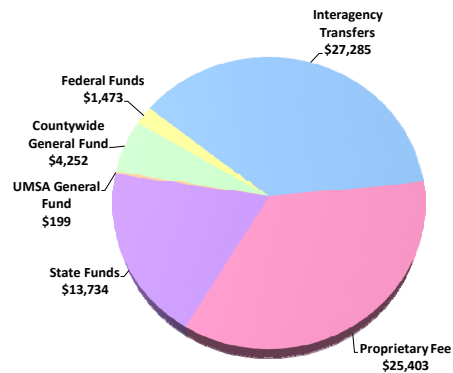
#### Expenditures by Activity

(dollars in thousands)



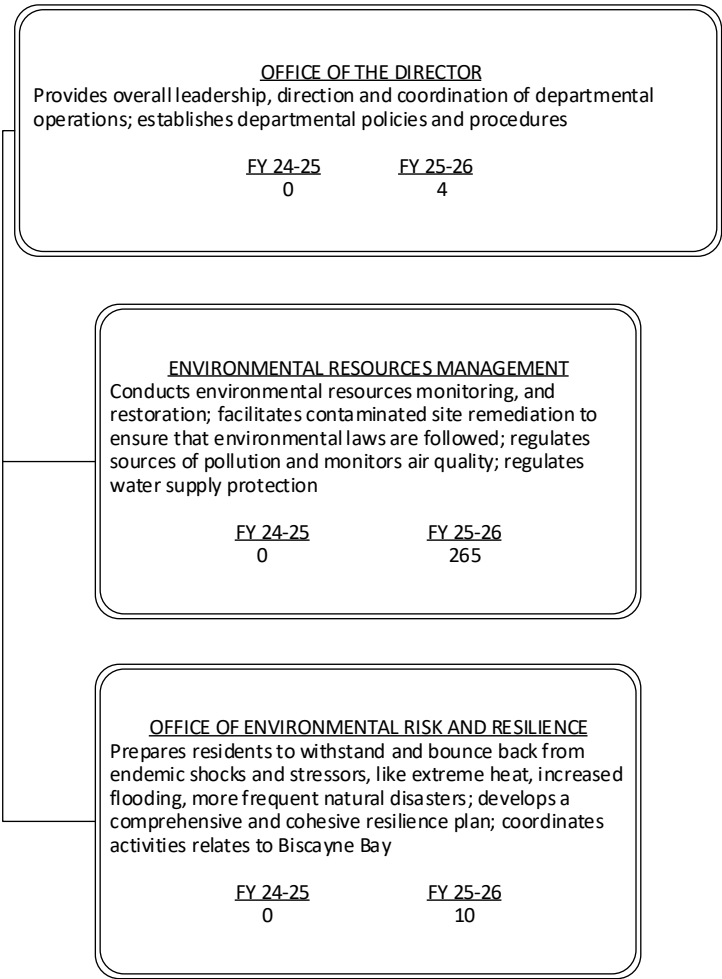
#### Revenues by Source

(dollars in thousands)



# FY 2025-26 Proposed Budget and Multi-Year Capital Plan

## TABLE OF ORGANIZATION



The FY 2025-26 total number of full-time equivalent positions is 280.5

## FY 2025-26 Proposed Budget and Multi-Year Capital Plan

---

### **DIVISION: OFFICE OF THE DIRECTOR**

Provides overall leadership, direction and coordination of departmental operations; establishes departmental policies and procedures

- Establishes overall vision, policy and objectives for the Department
- Coordinates all inter-governmental initiatives

### **DIVISION COMMENTS**

- **As part of our commitment to ensuring long-term financial stability, strengthening existing essential services, and improving operational efficiency, the FY 2025-26 Proposed Budget includes the merger of the Division of Environmental Resources Management and the Office of Environmental Risk and Resilience from the Regulatory and Economic Resources Department (RER) into the newly established Department of Environmental Resources Management Department (DERM); this restructuring includes the transfer of four positions from RER into the unified DERM to manage business operations and guide strategic planning as it relates to environmental management and protection**

### **DIVISION: ENVIRONMENTAL RESOURCES MANAGEMENT**

The Environmental Resources Management Division protects air, water, soils and natural systems that are vital to human health and safety and provide habitat for unique plant and animal communities that occur nowhere else in the world.

- Enforces federal, state and local laws to prevent water and air pollution; protects vulnerable drinking water supply
- Investigates compliance complaints received from the public and follow-up enforcement
- Manages, coordinates and administers environmental education programs
- Manages the Environmentally Endangered Lands Program
- Oversees countywide environmental regulatory functions including air and water quality monitoring, endangered lands acquisition and restoration and remediation of contaminated sites
- Oversees and develops the Reasonable Assurance Plan
- Manages the County's Beach Renourishment Program and related activities
- Responsible for compliance and reporting with the consent decree related to environmental protection activities
- Leads on all Federal US Army Corps of Engineers programs and investments across Miami-Dade County
- Leads partnership with South Florida Water Management district to reduce flooding across primary, secondary, and tertiary canal system
- Pursues and manages all statewide resiliency funding made available through Governor and Florida legislature on behalf of Miami-Dade County

## FY 2025-26 Proposed Budget and Multi-Year Capital Plan

Strategic Plan Objectives							
<ul style="list-style-type: none"> <li>NI3-1: Maintain air quality</li> </ul>							
Departmental Objectives	Performance Measures	Measure Type	Good Direction	FY 22-23	FY 23-24	FY 24-25	FY 25-26
				Actual	Actual	Budget	Target
Protect and restore environmental resources	Percentage of state air quality permits issued within 60 days	EF	↑	100.00%	96.97%	100.00%	100.00%
	Percentage of County air quality permits issued within eight days*	EF	↑	90.64%	87.30%	85.00%	85.00%
	Percentage of days that are "good" or "moderate" air quality	EF	↑	99.47%	99.19%	98.00%	98.00%

\*Prior year actuals have been revised due to changes in data collection tools

Strategic Plan Objectives							
<ul style="list-style-type: none"> <li>NI3-2: Protect and maintain surface and drinking water sources</li> </ul>							
Departmental Objectives	Performance Measures	Measure Type	Good Direction	FY 22-23	FY 23-24	FY 24-25	FY 25-26
				Actual	Actual	Budget	Target
Protect and restore environmental resources	Percent of contaminated site rehabilitation documents reviewed within the required timeframe*	EF	↑	86.24%	89.74%	90.00%	90.00%
	Density (# of sites/sq. mi.) of contaminated sites countywide (excluding wellfield areas) - Annual	IN	↔	7.33	7.40	7.50	7.50
	Density (# of sites/sq. mi.) of contaminated sites in wellfields	IN	↔	1.09	1.03	1.20	1.20
Increase the percentage of inspections completed on-time	Percent of high priority inspections completed**	EF	↑	31.40%	38.09%	100.00%	100.00%

\*FY 2022-23 Actual was updated due to scrivener's error

\*\*FY 2022-23 and FY 2023-24 Actual reflects a higher than anticipated level of attrition

## FY 2025-26 Proposed Budget and Multi-Year Capital Plan

Strategic Plan Objectives							
<ul style="list-style-type: none"> <li>N13-3: Protect, maintain, and restore beaches, the coastline, Biscayne Bay, and other bodies of water</li> </ul>							
Departmental Objectives	Performance Measures	Measure Type	Good Direction	FY 22-23	FY 23-24	FY 24-25	FY 25-26
				Actual	Actual	Budget	Target
Protect and restore environmental resources	Percentage of industrial waste pre-treatment inspections completed on-time*	EF	↑	78.27%	86.90%	90.00%	100.00%

\*FY 2022-23 Actual and FY 2024-25 Budget were updated due to scrivener's error

### DIVISION COMMENTS

- The FY 2025-26 Proposed Budget includes seven approved overages from FY 2024-25 (one Real Estate Officer position, one Program Special Projects Manager position, one Fire Ecologist position, one Contract Manager position, one Environmental Resources Project Supervisor position, one Biologist 2 position, and one RER Chief 1 position) for EEL and support for the initial phase of the Urban Forest and Tree Resources Section (\$726,000)
- The FY 2025-26 Proposed Budget includes six approved overages from FY 2024-25 (one Senior Professional Geologist positions, two Hydrogeologist 4 positions, two Hydrogeologist 3 positions, and one Engineer 3 position) to address site rehabilitation work assignments that have specified response times to stakeholders (\$787,000)
- The FY 2025-26 Proposed Budget includes the transfer of 251 positions from RER's former Division of Environmental Resources Management and one position from RER's former Innovation and Economic Development Division to manage business operations and guide strategic planning as it relates to environmental management and protection, as well as streamlined resiliency efforts (\$40.2 million)
- The FY 2025-26 Proposed Budget includes continued General Fund support in the amount of \$199,000 for the Miami River Commission for debris removal and water purification activities along the portion of the Miami River west of NW 27th Avenue that lies within the Unincorporated Municipal Service Area (UMSA)
- The FY 2025-26 Proposed Budget continues General Fund support of \$100,000 for the removal and disposal of decomposed fish and other marine life in the areas of Biscayne Bay
- During FY 2025-26, the Environmentally Endangered Lands (EEL) Program will continue to utilize the Parks, Recreation and Open Spaces Department as a maintenance contractor with funding support from the EEL Program (\$3 million)
- The FY 2025-26 Proposed Budget includes the remaining balance of \$2.2 million from the Miami-Dade Rescue Plan allocation to support the Environmentally Endangered Lands Program's multi-year restoration, rehabilitation, and land acquisition efforts
- The FY 2025-26 Proposed Budget includes continued Environmentally Endangered Lands Program funding (\$70,000) for the utilization of the Florida Fish and Wildlife Conservation Commission Enhanced Patrols and Miami-Dade's Sheriff Office to protect EEL Managed Lands (some of which are co-managed with the SFWMD) from impacts such as poaching, unauthorized use of firearms, theft, and destructions of wetland habitat with funding support from the EEL Program
- The FY 2025-26 Proposed Budget includes the waiver of the provisions of Chapter 24-50.5(2)(B)(I) of the County Code requiring to maintain a principal balance of \$10 million in the Environmentally Endangered Land Management Trust Fund
- During FY 2025-26, the Environmental Resources Management Division will continue to support a sustainable environment by offering free trees to plant in the community through the Adopt-a-Tree Program funded by donations and operating funds (\$400,000) and Environmental Protection and Education grant program funds administered by the Office of Management and Budget's Grants Coordination Division (\$430,000)

## FY 2025-26 Proposed Budget and Multi-Year Capital Plan

- The FY 2024-25 Adopted Budget included the waiver of provisions of Chapter 24 of the County Code to ensure funding availability from the Biscayne Bay Environmental Trust Fund for the Biscayne Bay Reasonable Assurance Plan related to water quality per Clean Water Act, provided such studies are related to regulation and maintenance of Biscayne Bay and surface waters that flow into Biscayne Bay; the FY 2025-26 Proposed Budget includes continued funding from the Biscayne Bay Trust Fund for the Biscayne Bay Reasonable Assurance Plan as authorized under Resolution No. R-1071-24

### DIVISION: OFFICE OF ENVIRONMENTAL RISK AND RESILIENCE

The Office of Environmental Risk and Resilience works to protect people, property, and economic prosperity by building resilience and reducing risk countywide, through efficient governance, blue and green infrastructure, and smart policy across all Miami-Dade County departments.

- Prepares Miami-Dade to bounce back from endemic shocks and stressors, like historic heat waves, increased flooding, more frequent natural disasters, and economic hardships
- Develops, coordinates, and facilitates a sea level rise strategy to begin preparing existing and future infrastructure for current and future impacts of flooding, storm surge and other climate related shocks and stressors
- Executes the Extreme Heat Action Plan which aims to reduce the health and economic impacts of increasing extreme heat and create a baseline for further research and new partnerships around this issue
- Works across county departments to implement a “One Water” strategy regarding water resources to improve water quality, conservation, and flood response
- Manages Countywide efforts to restore Biscayne Bay, including coordinating the Biscayne Bay Watershed Management Advisory Board
- Coordinates departments and external partners to implement the Urban Forestry plan and increase countywide tree cover
- Supports and advises on departmental environmental efforts across all county departments
- Incorporates environmental risk reduction goals into County policies, design guidelines, contracting, and procurement practices

### DIVISION COMMENTS

- **The FY 2025-26 Proposed Budget includes the transfer of 10 positions from the RER's former Office of Environmental Risk and Resilience to manage business operations and guide strategic planning as it relates to environmental management and protection, as well as streamlined resiliency efforts (\$7.260 million)**
- The FY 2025-26 Proposed Budget includes continued funding in the amount of \$235,000 for developing and maintaining several GIS maps under the purview of the Office, as well as other technology initiatives
- The FY 2025-26 Proposed Budget continues General Fund support of \$500,000 to support efforts relating to the Resilient305 Strategy, a partnership between Miami-Dade County, the City of Miami and Miami Beach, created to address resilience challenges in our communities that include sea level rise, an insufficient transportation system, the lack of affordable housing and infrastructure failures; this strategy will also address other priority shocks and stresses in a collaborative and synergistic process
- During FY 2024-25, a one-time allocation (\$250,000) of General Fund was appropriated to support the central processing of direct payments/IRA tax credits, which resulted in a \$3 million federal tax return to Miami-Dade County; unspent funds from the previous fiscal year will be carried over into FY 2025-26 to pursue a new filing
- The FY 2025-26 Proposed Budget includes \$100,000 for Biscayne Bay Marketing to be supported by the General Fund

## FY 2025-26 Proposed Budget and Multi-Year Capital Plan

- The FY 2025-26 Proposed Budget includes \$300,000 for the development of a Watershed Plan, a holistic approach to multifaceted water management, reduction or elimination of nutrient pollution sources, benthic habitat restoration, land use and planning, integration of regional restoration efforts, and community resilience challenges to be reimbursed by the General Fund; these dollars serve as a match to a \$500k appropriation from the State Legislature
- The FY 2025-26 Proposed Budget includes \$250,000 for the Extreme Heat Marketing program to be supported by the General Fund

### **CAPITAL BUDGET HIGHLIGHTS AND OPERATIONAL IMPACTS**

- In FY 2025-26, the Department will continue to maintain and improve beaches, which provides protection against storm impacts, enhance quality of life for residents and increase tourism, through the Miami-Dade County Beach Erosion and Renourishment Program funded from the Army Corps of Engineers (\$299.499 million), Florida Department of Environmental Protection (\$13.960 million), Beach Renourishment Fund (\$9 million), Village of Key Biscayne Contribution (\$1.3 million), City of Miami Beach Contribution (\$8.625 million) and Building Better Communities General Obligation Bond (BBC-GOB) program proceeds (\$27.5 million); the program covers all capital and related costs such as surveys, planning, design and construction, inclusive of temporary easements of property to facilitate staging and construction, for federally and locally funded beach renourishment projects throughout the federally authorized 13-mile project area that includes Miami Beach, Sunny Isles, Bal Harbour, and Surfside (total program cost \$359.884 million; \$22.383 million in FY 2025-26; capital program #2000000344)
- In FY 2025-26, the Department will continue restoring and stabilizing the wetlands, shoreline and islands in and adjacent to Biscayne Bay and its tributaries; the capital program is funded from the Biscayne Bay Environmental Enhancement Trust Fund (\$13.67 million), Florida Inland Navigational District grant proceeds (\$600,000) and through a Resilient Florida Grant Program (\$330,000) (total program cost \$14.6 million; \$8.3 million in FY 2025-26; capital program #5555691)
- The Department's FY 2025-26 Proposed Budget and Multi-Year Capital Plan also continues to ensure that environmentally endangered lands are protected and thrive as native habitats through the Environmentally Endangered Lands purchasing land program; the capital program is funded from Building Better Communities-General Obligation Bond (BBC-GOB) program proceeds (\$40 million), the Biscayne Bay Environmental Enhancement Trust Fund (\$2 million), the Florida Department of Environmental Protection (\$900,000), the Resilient Florida Grant Program (\$7.475 million), and general revenue from the Miami-Dade Rescue Plan (\$19 million) transferred to the Environmentally Endangered Lands funds to address future budget gaps in the program (total program cost \$69.375 million; \$4.115 million in FY 2025-26; capital program #5555621)
- The Department's FY 2025-26 Proposed Budget and Multi-Year Capital Plan includes the purchase of two vehicles (\$115,000) to replace its aging fleet; the fleet replacement plan will provide operational savings to the Department in the long-term as it will reduce maintenance costs, fuel consumption and overtime as a result of equipment failure; the County's fleet replacement plan is included under Non-Departmental capital program #2000000511

### **SELECTED ITEM HIGHLIGHTS AND DETAILS**

Line-Item Highlights	(dollars in thousands)				
	Actual FY 22-23	Actual FY 23-24	Budget FY 24-25	Projection FY 24-25	Proposed FY 25-26
Advertising	0	0	0	0	20
Fuel	0	0	0	0	111
Overtime	0	0	0	0	219
Rent	0	0	0	0	3,978
Security Services	0	0	0	0	0
Temporary Services	0	0	0	0	10
Travel and Registration	0	0	0	0	116
Utilities	0	0	0	0	15

## FY 2025-26 Proposed Budget and Multi-Year Capital Plan

### OPERATING FINANCIAL SUMMARY

(dollars in thousands)	Actual FY 22-23	Actual FY 23-24	Budget FY 24-25	Proposed FY 25-26
<b>Revenue Summary</b>				
General Fund Countywide	0	0	0	4,252
General Fund UMSA	0	0	0	199
Auto Tag Fees	0	0	0	2,111
Carryover	0	0	0	774
Environmentally Endangered Land Fees	0	0	0	2,732
Fees and Charges	0	0	0	15,953
Other Revenues	0	0	0	4,445
State Grants	0	0	0	13,734
Federal Grants	0	0	0	1,473
Interagency Transfers	0	0	0	43,464
Total Revenues	0	0	0	89,137
<b>Operating Expenditures</b>				
<b>Summary</b>				
Salary	0	0	0	26,803
Fringe Benefits	0	0	0	11,467
Court Costs	0	0	0	16
Contractual Services	0	0	0	3,941
Other Operating	0	0	0	17,503
Charges for County Services	0	0	0	10,276
Grants to Outside Organizations	0	0	0	410
Capital	0	0	0	1,930
Total Operating Expenditures	0	0	0	72,346
<b>Non-Operating Expenditures</b>				
<b>Summary</b>				
Transfers	0	0	0	0
Distribution of Funds In Trust	0	0	0	0
Debt Service	0	0	0	0
Depreciation, Amortizations and Depletion	0	0	0	0
Reserve	0	0	0	16,791
Total Non-Operating Expenditures	0	0	0	16,791

(dollars in thousands)	Total Funding		Total Positions	
Expenditure By Program	Budget FY 24-25	Proposed FY 25-26	Budget FY 24-25	Proposed FY 25-26
<b>Strategic Area: Neighborhood and Infrastructure</b>				
Office of the Director	0	700	0	4
Environmental Resources Management	0	66,631	0	265
Office of Environmental Risk and Resilience	0	5,015	0	10
Total Operating Expenditures	0	72,346	0	279



## FY 2025-26 Proposed Budget and Multi-Year Capital Plan

### **CAPITAL BUDGET SUMMARY**

(dollars in thousands)	PRIOR	FY 25-26	FY 26-27	FY 27-28	FY 28-29	FY 29-30	FY 30-31	FUTURE	TOTAL
<b>Revenue</b>									
Army Corps of Engineers	275,924	16,075	0	7,500	0	0	0	0	299,499
BBC GOB Financing	63,450	750	0	3,300	0	0	0	0	67,500
Beach Renourishment Fund	9,000	0	0	0	0	0	0	0	9,000
Biscayne Bay Envir. Trust Fund	1,290	9,380	1,000	1,000	1,000	1,000	1,000	0	15,670
City of Miami Beach	8,625	0	0	0	0	0	0	0	8,625
Contribution									
Environmentally Endangered	19,000	0	0	0	0	0	0	0	19,000
Land Funds									
Florida Department of	11,060	0	50	3,750	0	0	0	0	14,860
Environmental Protection									
Florida Inland Navigational	0	100	100	100	100	100	100	0	600
District									
National Fish and Wildlife	330	0	0	0	0	0	0	0	330
Foundation									
Resilient Florida Grant Program	5,795	1,680	0	0	0	0	0	0	7,475
Village of Key Biscayne	750	550	0	0	0	0	0	0	1,300
Contribution									
Total:	395,224	28,535	1,150	15,650	1,100	1,100	1,100	0	443,859
<b>Expenditures</b>									
<b>Strategic Area: NI</b>									
Beach Projects	314,049	22,383	1,880	21,272	150	0	150	0	359,884
Environmental Projects	800	8,300	1,100	1,100	1,100	1,100	1,100	0	14,600
Environmentally Endangered	52,615	4,115	1,000	3,000	3,000	5,645	0	0	69,375
Lands Projects									
Total:	367,464	34,798	3,980	25,372	4,250	6,745	1,250	0	443,859

### **FUNDED CAPITAL PROGRAMS**

(dollars in thousands)

#### **BEACH - EROSION MITIGATION AND RENOURISHMENT**

**PROGRAM #: 2000000344**

DESCRIPTION: Provide beach renourishment for eroded portions of Miami-Dade County beaches in cooperation with the U.S. Army Corps of Engineers

LOCATION: Miami-Dade County Beaches  
Various Sites

District Located: 4,5,7  
District(s) Served: Countywide

REVENUE SCHEDULE:	PRIOR	2025-26	2026-27	2027-28	2028-29	2029-30	2030-31	FUTURE	TOTAL
Army Corps of Engineers	275,924	16,075	0	7,500	0	0	0	0	299,499
BBC GOB Financing	23,450	750	0	3,300	0	0	0	0	27,500
Beach Renourishment Fund	9,000	0	0	0	0	0	0	0	9,000
City of Miami Beach Contribution	8,625	0	0	0	0	0	0	0	8,625
Florida Department of	10,160	0	50	3,750	0	0	0	0	13,960
Environmental Protection									
Village of Key Biscayne Contribution	750	550	0	0	0	0	0	0	1,300
<b>TOTAL REVENUES:</b>	<b>327,909</b>	<b>17,375</b>	<b>50</b>	<b>14,550</b>	<b>0</b>	<b>0</b>	<b>0</b>	<b>0</b>	<b>359,884</b>
EXPENDITURE SCHEDULE:	PRIOR	2025-26	2026-27	2027-28	2028-29	2029-30	2030-31	FUTURE	TOTAL
Construction	314,049	22,383	1,880	21,272	150	0	150	0	359,884
<b>TOTAL EXPENDITURES:</b>	<b>314,049</b>	<b>22,383</b>	<b>1,880</b>	<b>21,272</b>	<b>150</b>	<b>0</b>	<b>150</b>	<b>0</b>	<b>359,884</b>

## FY 2025-26 Proposed Budget and Multi-Year Capital Plan

### BISCAYNE BAY - RESTORATION AND SHORELINE STABILIZATION

**PROGRAM #:** 5555691

**DESCRIPTION:** Restore, enhance and stabilize wetlands, shoreline and islands in and adjacent to Biscayne Bay and its tributaries

**LOCATION:** Biscayne Bay and Tributaries  
Various Sites

**District Located:** 4,5,7,8  
**District(s) Served:** 5,7,8

<b>REVENUE SCHEDULE:</b>	<b>PRIOR</b>	<b>2025-26</b>	<b>2026-27</b>	<b>2027-28</b>	<b>2028-29</b>	<b>2029-30</b>	<b>2030-31</b>	<b>FUTURE</b>	<b>TOTAL</b>
Biscayne Bay Envir. Trust Fund	470	8,200	1,000	1,000	1,000	1,000	1,000	0	13,670
Florida Inland Navigational District	0	100	100	100	100	100	100	0	600
National Fish and Wildlife Foundation	330	0	0	0	0	0	0	0	330
<b>TOTAL REVENUES:</b>	<b>800</b>	<b>8,300</b>	<b>1,100</b>	<b>1,100</b>	<b>1,100</b>	<b>1,100</b>	<b>1,100</b>	<b>0</b>	<b>14,600</b>
<b>EXPENDITURE SCHEDULE:</b>	<b>PRIOR</b>	<b>2025-26</b>	<b>2026-27</b>	<b>2027-28</b>	<b>2028-29</b>	<b>2029-30</b>	<b>2030-31</b>	<b>FUTURE</b>	<b>TOTAL</b>
Construction	800	8,300	1,100	1,100	1,100	1,100	1,100	0	14,600
<b>TOTAL EXPENDITURES:</b>	<b>800</b>	<b>8,300</b>	<b>1,100</b>	<b>1,100</b>	<b>1,100</b>	<b>1,100</b>	<b>1,100</b>	<b>0</b>	<b>14,600</b>

### ENVIRONMENTALLY ENDANGERED LANDS PROGRAM

**PROGRAM #:** 5555621

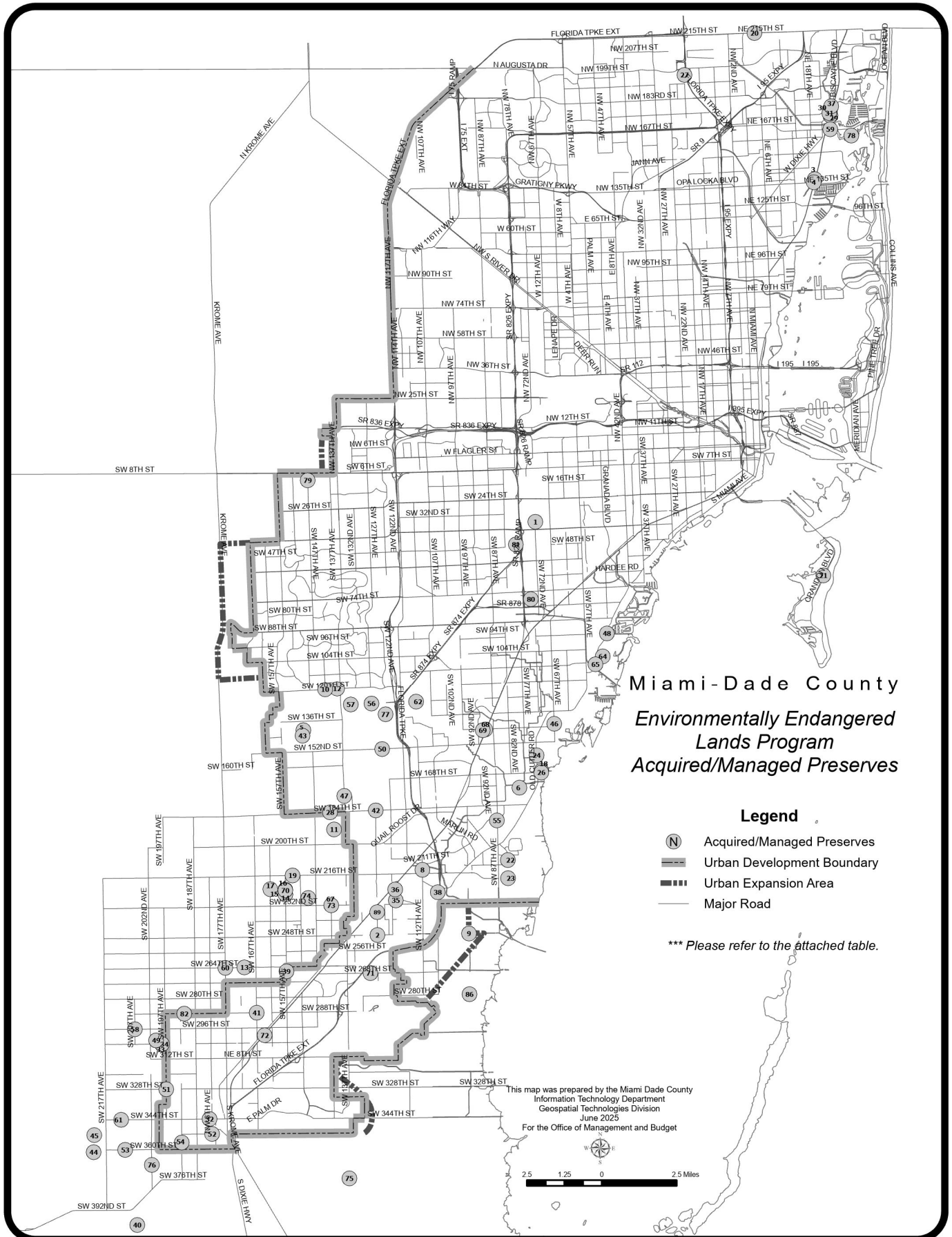
**DESCRIPTION:** Acquire and manage environmentally sensitive and endangered lands

**LOCATION:** Various Sites  
Throughout Miami-Dade County

**District Located:** Countywide  
**District(s) Served:** Countywide

<b>REVENUE SCHEDULE:</b>	<b>PRIOR</b>	<b>2025-26</b>	<b>2026-27</b>	<b>2027-28</b>	<b>2028-29</b>	<b>2029-30</b>	<b>2030-31</b>	<b>FUTURE</b>	<b>TOTAL</b>
BBC GOB Financing	40,000	0	0	0	0	0	0	0	40,000
Biscayne Bay Envir. Trust Fund	820	1,180	0	0	0	0	0	0	2,000
Environmentally Endangered Land Funds	19,000	0	0	0	0	0	0	0	19,000
Florida Department of Environmental Protection	900	0	0	0	0	0	0	0	900
Resilient Florida Grant Program	5,795	1,680	0	0	0	0	0	0	7,475
<b>TOTAL REVENUES:</b>	<b>66,515</b>	<b>2,860</b>	<b>0</b>	<b>0</b>	<b>0</b>	<b>0</b>	<b>0</b>	<b>0</b>	<b>69,375</b>
<b>EXPENDITURE SCHEDULE:</b>	<b>PRIOR</b>	<b>2025-26</b>	<b>2026-27</b>	<b>2027-28</b>	<b>2028-29</b>	<b>2029-30</b>	<b>2030-31</b>	<b>FUTURE</b>	<b>TOTAL</b>
Construction	2,790	3,360	0	0	0	0	0	0	6,150
Land Acquisition/Improvements	49,825	755	1,000	3,000	3,000	5,645	0	0	63,225
<b>TOTAL EXPENDITURES:</b>	<b>52,615</b>	<b>4,115</b>	<b>1,000</b>	<b>3,000</b>	<b>3,000</b>	<b>5,645</b>	<b>0</b>	<b>0</b>	<b>69,375</b>

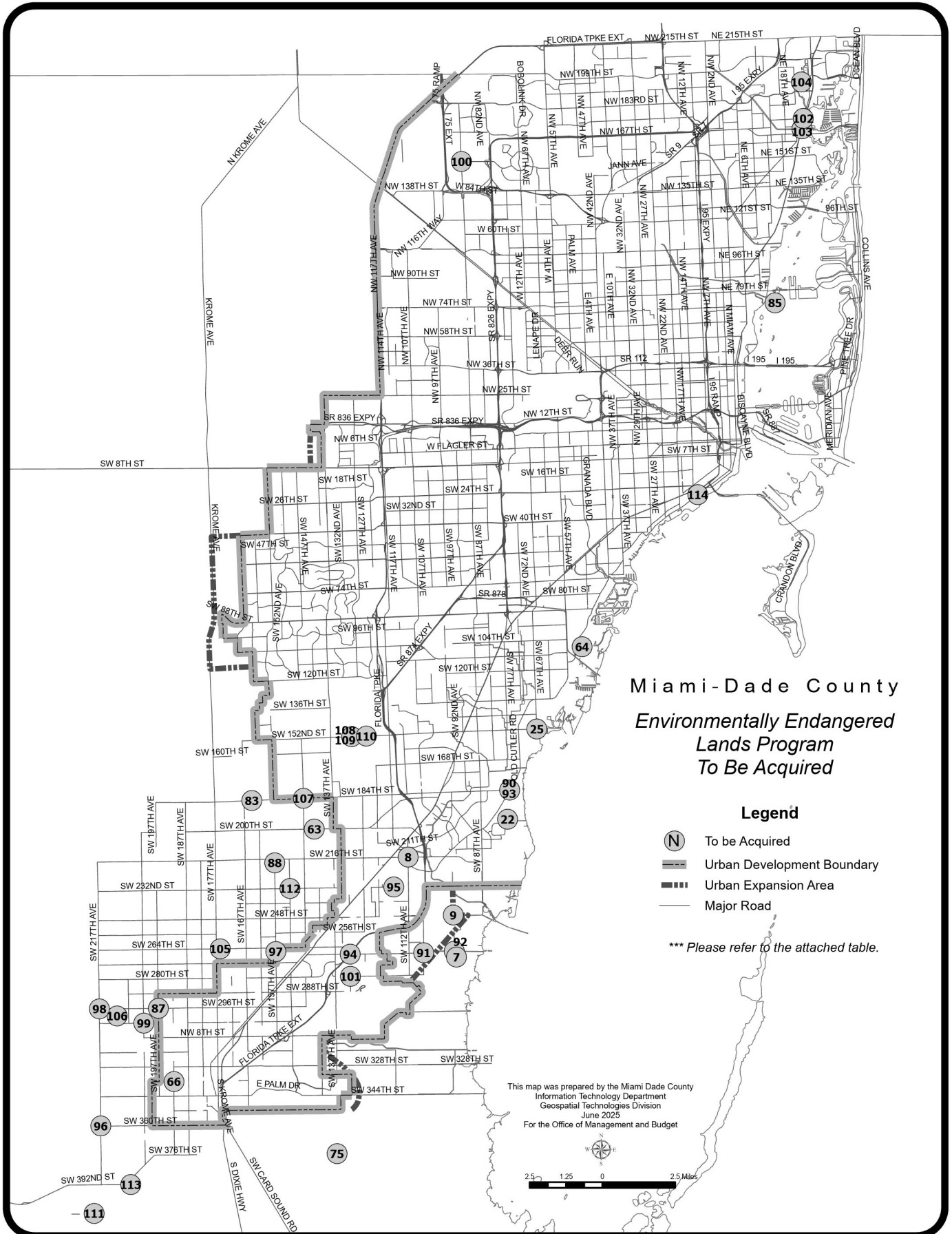
# FY 2025-26 Proposed Budget and Multi-Year Capital Plan



# FY 2025-26 Proposed Budget and Multi-Year Capital Plan

Environmentally Endangered Lands Program - Acquired/Managed Preserves				
Number	Site Name	Location	Condition	Acres
1	A. D. Barnes Park	3775 SW 74 Ave	Needs Restoration/Enhancement	25
2	Andrew Dodge New Pines Preserve	SW 248 St & SW 127 Ave	Needs Restoration/Enhancement	3.5
6	Bill Sadowski Park	17555 SW 79 Ave	Needs Restoration/Enhancement	23
5	Big George Hammock	SW 141 St & SW 149 Ave	Needs Restoration/Enhancement	13
8	Black Creek Forest	SW 214 St & SW 112 Ave	Needs Restoration/Enhancement	7
9	Black Point Wetlands	SW 248 St & SW 97 Ave	Needs Restoration/Enhancement	78.9
3	Arch Creek Addition	NE 135 St & US 1	Needs Restoration/Enhancement	1.2
12	Camp Matecumbe Pine Islands	13841 SW 120 St	Needs Restoration/Enhancement*21.46 Acquired	3
4	Arch Creek Park	NE 135 St & US-1	Needs Restoration/Enhancement	8.5
10	Boystown Pineland	SW 120 St & SW 142 Ave	Needs Restoration/Enhancement	77
11	Calderon Pineland	SW 192 St & SW 140 Ave	Needs Restoration/Enhancement	15.2
13	Camp Owaissa Bauer	SW 264 St & SW 170 Ave	Needs Restoration/Enhancement	80
17	Castellow Hammock Park	22301 SW 162 Ave	Needs Restoration/Enhancement	55
18	Charles Deering Estate	16701 SW 72 Ave	Needs Restoration/Enhancement	332
15	Castellow 33	SW 226 St & 157 Ave	In Maintenance	10
14	Castellow 28	SW 226 St & 157 Ave	Needs Restoration/Enhancement	18.7
21	Crandon Park	7200 Crandon Blvd	Needs Restoration/Enhancement	444
16	Castellow Addition	SW 223 St & 157 Ave	Needs Restoration/Enhancement	7.8
22	Cutler Wetlands	SW 210 St & SW 85 Ave	Needs Restoration/Enhancement	480
19	Chernoff Hammock	SW 216 St & SW 154 Ave	Needs Restoration/Enhancement	4.5
23	Cutler Wetlands Addition	SW 216 St. & SW 85 Ave.	Needs Restoration/Enhancement	19
20	County Line Scrub	NE 215 St & NE 4 Ave	Needs Restoration/Enhancement	15
24	Deering Glade Parcel (Powers)	SW 158 St & Old Cutler Rd	N/A*9.7 - Acquired	0
27	Dolphin Center Addition	NW 196 St & NW 17 Ave	Needs Restoration/Enhancement	4
26	Deering South Addition	SW 168 St & SW 72 Ave	Needs Restoration/Enhancement	32
29	East Greynolds Park	17530 W Dixie Hwy	Needs Restoration/Enhancement	17
28	Eachus Pineland	SW 184 St & SW 142 Ave	Needs Restoration/Enhancement	17
30	East East Greynolds Park	17530 W Dixie Hwy	Needs Restoration/Enhancement	19.6
31	East Greynolds Addition	17530 W Dixie Hwy	Needs Restoration/Enhancement	2.7
32	Florida City Pineland	SW 344 St & SW 185 Ave	Needs Restoration/Enhancement	24
33	Fuchs Hammock	SW 304 St & SW 198 Ave	Needs Restoration/Enhancement	24
34	Fuchs Hammock Addition	SW 304 St & SW 198 Ave	Needs Restoration/Enhancement	14.8
37	Greynolds Park	17530 W Dixie Hwy	Needs Restoration/Enhancement	53
35	Gould Pineland Addition	SW 232 St & SW 120 Ave	Needs Restoration/Enhancement	7
36	Goulds Pineland	SW 224 St & SW 120 Ave	Needs Restoration/Enhancement	36.5
39	Hattie Bauer Hammock	SW 267 St & SW 157 Ave	Needs Restoration/Enhancement	15
38	Harden Hammock	SW 226 St & SW 107 Ave	Needs Restoration/Enhancement	12.4
40	Holiday Hammock	SW 400 St & SW 207 Ave	Needs Restoration/Enhancement	40
41	Ingram Pineland	SW 288 St & SW 167 Ave	Needs Restoration/Enhancement	10
44	Loveland Hammock	SW 360 St & SW 222 Ave	Needs Restoration/Enhancement	16
45	Lucille Hammock	SW 352 St & SW 222 Ave	Needs Restoration/Enhancement	20.8
43	Little George Hammock	SW 144 St. & SW 149 Ave.	Needs Restoration/Enhancement	7
42	Larry & Penny Thompson Park	SW 184 St & SW 127 Ave	Needs Restoration/Enhancement	194
49	Meissner Hammock	SW 302 St & SW 200 Ave	Needs Restoration/Enhancement	10
50	Metrozoo Pinelands	12400 SW 152 St	Needs Restoration/Enhancement	142.4
48	Matheson Hammock Park	SW 96 St & Old Cutler Rd	Needs Restoration/Enhancement	381
46	Ludlam Pineland	SW 143 St & SW 67 Ave	Needs Restoration/Enhancement	10
47	Martinez	SW 137 Ave & SW 176 St	Needs Restoration/Enhancement	135
52	Navy Wells #23	SW 352 St & SW 182 Ave	Needs Restoration/Enhancement	27
51	Navy Wells #2	SW 328 St & SW 197 Ave	Needs Restoration/Enhancement	19
53	Navy Wells #39	SW 360 St & SW 210 Ave	Needs Restoration/Enhancement	19
54	Navy Wells Preserve	SW 356 St & SW 192 Ave	Needs Restoration/Enhancement	239
58	Northrop Pineland	SW 296 St & SW 207th Ave	Needs Restoration/Enhancement	12.8
56	Nixon Smiley Addition (Tamiami #8)	SW 128 St & SW 127 Ave	Needs Restoration/Enhancement	63
55	Ned Glenn Preserve	SW 188 St & SW 87 Ave	Needs Restoration/Enhancement	10
57	Nixon Smiley Pineland	SW 128 St & SW 133 Ave	Needs Restoration/Enhancement	60
61	Palm Drive	SW 344 St & SW 212 Ave	Needs Restoration/Enhancement	20
60	Owaissa Bauer Addition #1	SW 264 St & SW 177 Ave	Needs Restoration/Enhancement	9.4
64	R. Hardy Matheson Addition	Old Cutler Rd & SW 108 St	Needs Restoration/Enhancement	19.9
62	Pineshore Park	SW 128 St & SW 112 Ave	Needs Restoration/Enhancement	7.8
59	Oleta Tract C	NE 163 St & US-1	Needs Restoration/Enhancement	2.5
67	Rock Pit #46	SW 232 St & SW 142 Ave	Needs Restoration/Enhancement	5
65	R. Hardy Matheson Preserve	SW 112 St & Old Cutler Rd	Needs Restoration/Enhancement	791
70	Ross Hammock	SW 223 St & SW 157 Ave	Needs Restoration/Enhancement	20
71	School Board Pineland	SW 268 St & SW 129 Ave	Needs Restoration/Enhancement	18.4
73	Silver Palm Groves	SW 232 St & SW 142 Ave	Needs Restoration/Enhancement	20.4
68	Rockdale Addition	SW 144 St & US-1	Needs Restoration/Enhancement	11
74	Silver Palm Hammock	SW 228 St & SW 149 Ave	Needs Restoration/Enhancement	10
76	Sunny Palms (Navy Wells #42)	SW 368 St & SW 202 Ave	Needs Restoration/Enhancement	40.8
69	Rockdale Pineland	SW 144 St & US-1	Needs Restoration/Enhancement	26
78	Terama Tract in Oleta Preserve	Oleta Park Preserve	N/A *29.7 - Acquired	0
75	South Dade Wetlands	SW 137 Ave & SW 376 St	Needs Restoration/Enhancement	23849
72	Seminole Wayside Park Addition	SW 300 St & US-1	Needs Restoration/Enhancement	5.5
81	Tropical Park	7900 Bird Rd	Needs Restoration/Enhancement	4.4
82	West Biscayne	SW 288 St & SW 190 Ave	Needs Restoration/Enhancement	15.1
77	Tamiami Complex Addition	SW 134 St & SW 122 Ave	Needs Restoration/Enhancement	25.6
80	Trinity Pineland	SW 76 St & SW 74 Ave	In Maintenance	10
79	Tree Island Park	SW 10 St & SW 147 Ave	Needs Restoration/Enhancement*120 Acquired	78
86	Biscayne Wetlands	SW 280 St & SW 97 Ave		864.1
Total Acreage the EEL Program is Responsible for Managing				29,270.20

# FY 2025-26 Proposed Budget and Multi-Year Capital Plan



## FY 2025-26 Proposed Budget and Multi-Year Capital Plan

Environmentally Endangered Lands Program - Properties on EEL Acquisition List					
*some are partially acquired-refer to Acquired/Managed List					
Number	Site Name	Location	Habitat	Priority	Acres
7	Biscayne Wetlands North Addition	SW 270 St & SW 107 Ave			392
8	Black Creek Forest	SW 216 St & SW 112 Ave	Pineland	A	45.5
9	Black Point Wetlands	SW 248 St & SW 97 Ave	Coastal Wetlands	A	191.8
22	Cutler Wetlands	SW 196 St & SW 78 Ave	Coastal Wetlands	A	780
25	Deering North Addition	SW 152 St & SW 67 Ave			43
63	Quail Roost	SW 200 St & SW 144 Ave			48.5
64	R. Hardy Matheson Addition	Old Cutler Rd & SW 108 St	Coastal Wetlands	A	21.5
66	Rock Pit #39	SW 336 St & SW 192 Ave			9
75	South Dade Wetlands	SW 137 Ave & SW 376 St	Wetlands	A	30775
83	Wilkins-Pierson	SW 184 St & SW 164 Ave			10
85	Bird Key	NW 79 St & Biscayne Bay	Mangrove	A	37.5
87	Bowers Pineland	SW 296 St & SW 197 Ave	Rockridge Pinelands	A	9.8
88	Castellow #31	SW 218 St & SW 157 Ave	Tropical Hammocks	A	14.1
90	Cutler Bay Properties	SW 184 St & Old Cutler Rd	Buffer	B	9.9
91	Cutler Pit and Mangroves	C-102 (SW 268 St) & SW 107 Ave	Coastal Wetlands	A	536
92	Cutler Pit and Mangroves Addition	C-102 (SW 268 St) & SW 97 Ave	Coastal Wetlands	A	5
93	Cutler Wetlands North Addition Hammock	SW 184 St & Old Cutler Rd	Tropical Hammocks	B	37
94	Dixie Heights Pineland	SW 268 St & SW 132 Ave	Rockridge Pinelands	B	29
95	Goulds Addition	SW 232 St & SW 117 Ave	Rockridge Pinelands	A	28.8
96	Hammock Island	SW 360 St & SW 217 Ave	Tropical Hammocks	B	64.7
97	Hattie Bauer Pineland	SW 266 St & SW 157 Ave	Rockridge Pinelands	A	5
98	Homestead General Airport Hammock	SW 296 St & SW 217 Ave	Tropical Hammocks	B	4
99	Kings Highway	SW 304 St & SW 202 Ave	Rockridge Pinelands	A	31.1
100	Maddens Hammock	NW 154 St & NW 87 Ave	Tropical Hammocks	B	15.6
101	Notre Dame Pineland	SW 280 St & SW 132 Ave	Rockridge Pinelands	B	32
102	Oleta Tract A	NE 171 St & US-1	Coastal Wetlands	A	2.1
103	Oleta Tract B	NE 165 St & US-1	Coastal Wetlands	A	3.5
104	Oleta Tract D	NE 191 St & NE 24 Ave	Coastal Wetlands	A	7.4
105	Owaissa Bauer Addition #2	SW 264 St & SW 175 Ave	Rockridge Pinelands	A	10
106	Pine Ridge Sanctuary	SW 300 St & SW 211 Ave	Rockridge Pinelands	A	14
107	Railroad Pineland	SW 184 St & SW 147 Ave	Rockridge Pinelands	B	18.2
108	Richmond Complex	SW 152 St & SW 130 Ave	Rockridge Pinelands	A	219
109	Richmond Pineland-School Board/University of Miami	SW 152 St. & SW 130 Ave.	Rockridge Pinelands	A	4.8
110	Richmond Pineland-University of Miami/Coral Reef Retail	SW 152 St. & SW 127 Ave.	Rockridge Pinelands	A	7.1
111	Round Hammock	SW 408 St & SW 220 Ave	Tropical Hammocks	A	32
112	Silver Palm Addition	SW 232 St & SW 152 Ave	Rockridge Pinelands	A	19
113	SW Island Hammock	SW 392 St & SW 207 Ave	Tropical Hammocks	A	12.4
114	Vizcaya Hammock Addition	3300 South Miami Ave	Tropical Hammocks	A	2
<b>Total Acreage the EEL Program is Responsible for Acquiring</b>					<b>33,527</b>