

Miami-Dade County Agriculture



“The discovery of agriculture was the first big step toward a civilized life”

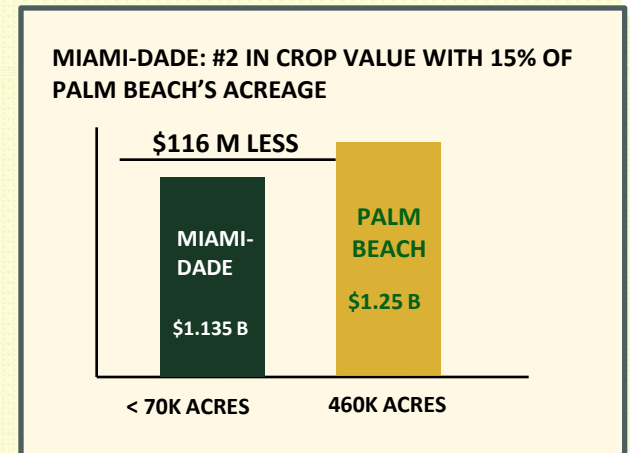
-Sir Arthur Keith

Agricultural Importance

- Miami-Dade County has a rich agricultural heritage
- Only tropical growing region in the continental United States
- Strategically important for winter production
- Has more than 68,000 acres of land designated by the USDA as soils of unique agricultural importance

Miami-Dade Crop Value

- Miami-Dade County #2 in the state with a crop value of \$1.135 billion/year
- Palm Beach County: #1 in Florida crop value (\$1.25 billion/year)
- Miami-Dade earns \$1.136B on less than 70,000 acres vs. Palm Beach's 460,000 acres



The Impact

- 11% of State agriculture sales
- Over 13,000 direct and indirect jobs
- \$1.55 billion annual economic impact
- Over 1700 new and beginning farmers featuring 17,000 acres of farmland
- \$302 million in annual direct farm labor payroll
- 36% increase in market value of products sold since 2017
- 53% increase in Farm-related income since 2017



Miami-Dade Agricultural Ranking

- #1 in the country in nursery crops
- #18 in the USA based on crop value
- #1 in Florida for avocados & tropical vegetable crops
- #1 in Florida for squash, okra, sweet potato "boniato"
- #2 in the state for women owned farms
- #1 in Florida for highest number of farm laborers



Major Agricultural Sectors

- Nursery crops
- Vegetables
- Tropical fruits

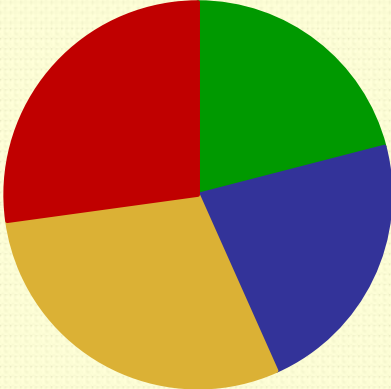


Lands Classified Agriculture by Miami-Dade Property Appraiser For 2025

| Description | Outside UDB | Inside UDB | Total Acreage |
|-----------------------------|-----------------|---------------|-----------------|
| ROW CROPS | 16130.92 | 1086.75 | 17217.67 |
| HAY | 312.59 | 0 | 312.59 |
| IMPROVED PASTURE | 841.28 | 522.11 | 1336.39 |
| SEMI-IMPROVED PASTURE | 29.06 | 1.27 | 30.33 |
| NATIVE PASTURE | 0 | 33.51 | 33.51 |
| MIXED ANIMALS | 170.78 | 14.74 | 185.52 |
| GOATS | 8.76 | 0.09 | 8.85 |
| SHEEP | 17.06 | 0.6 | 17.66 |
| RABBITS | 5.3 | 0 | 5.3 |
| HORSE BOARDING AND BREEDING | 449.35 | 231.8 | 681.15 |
| POULTRY | 17.69 | 3.69 | 21.38 |
| BEEES | 94.47 | 189.48 | 283.95 |
| FISH | 139.91 | 3.72 | 143.63 |
| AVICULTURE | 6.56 | 0 | 6.56 |
| FRUITS | 3.89 | 0.16 | 4.05 |
| AVOCADO/COCONUT | 1849.42 | 74.99 | 1924.41 |
| MANGO/BANANA/GUAVA | 0.14 | 0 | 0.14 |
| FRUITS/GROVES | 12481.6 | 748.08 | 13229.68 |
| TREE NURSERY | 4023.88 | 212.21 | 4236.09 |
| CONTAINER NURSERY | 10856.99 | 474.25 | 11331.24 |
| IN GROUND NURSERY | 1454.67 | 86.35 | 1541.02 |
| TOTAL | 48867.32 | 3683.8 | 52551.12 |

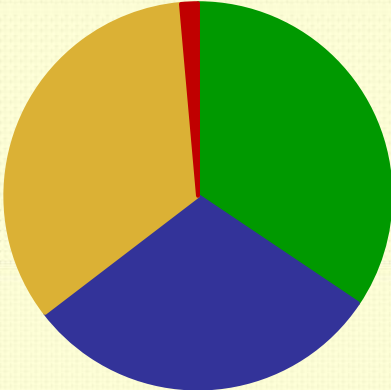
2025 Property Appraiser Ag Classified Land

Inside UDB Acres 3683.8



■ Nursery ■ Fruit ■ Row Crops ■ Animals

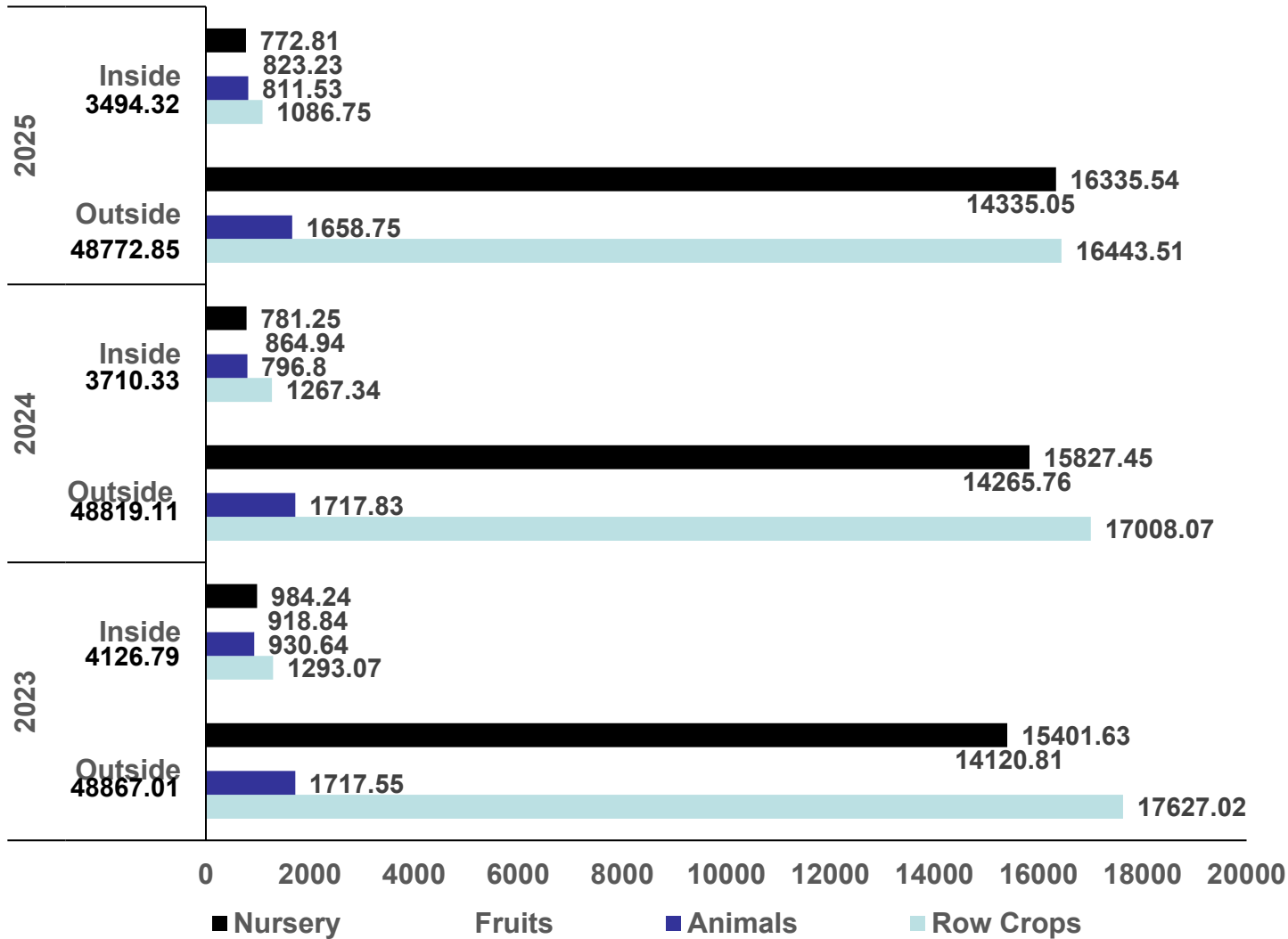
Outside Acres 48867.32



■ Nursery ■ Fruit ■ Row Crops ■ Animals



Lands Classified Agriculture by Miami-Dade Property Appraiser



Major Markets

89% of agricultural products grown in Miami-Dade are shipped out of the region

- US
- Canada
- Caribbean
- Europe





Growth Sectors

- Ornamental plants
- Landscape
- Asian fruits/vegetables
- Latin fruits/vegetables
- Agritourism
- Small scale animal production

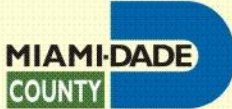
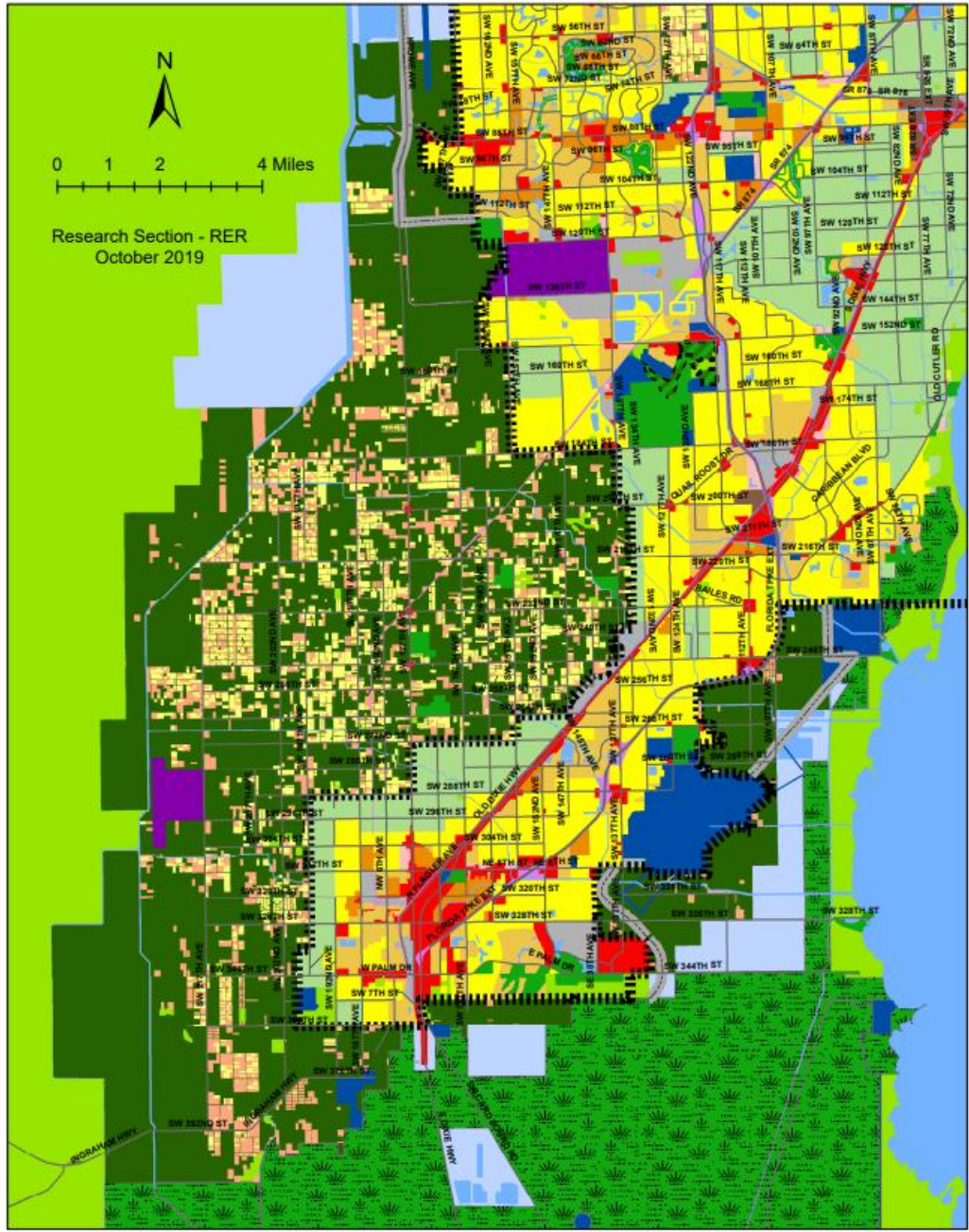


Challenges

- Phytosanitary issues
- Foreign competition
- Increasing production cost
- Workforce availability & housing
- In-state competition
- Government Policies
- Land ownership patterns
- Urban development
- Water
- Natural disasters



- Ag Land <5 Acres Outside UDB With A SF Home
- Ag Land <5 Acres Outside UDB Without A SF Home



Office of the Agricultural Manager
Regulatory and Economic Resources
Department

Miami-Dade County

305-971-5091

