
**CHECKLIST #0270 FOR THE APPROVAL OF:
SHUTTERS**

- ❑ Basic Requirements Checklist.
- ❑ One set of the manufacturer's 'approval document' including:
 - a) All components indicating: dimensions, material grade, thickness, etc.
 - b) Installation details indicating: panel layouts and all mounting arrangements,
 - c) Anchors and fasteners used to secure the unit to each substrate indicating: type, size, spacing and minimum embedment, and
 - d) Maximum shutter span, minimum distance from glass and location of marking.
- ❑ Calculations for anchoring method of shutter assembly to the structure.
- ❑ Certified inspection report from mill supplying the shutter material indicating:
 - a) Chemical composition, and
 - b) Structural properties. (I.e. Fu, Fy, E & Elongation.)
- ❑ One set of manufacturer's design drawings marked and verified by the testing laboratory.

The following current laboratory tests and test reports in compliance with protocol TAS 301.

- ❑ Uniform Static Air test per TAS202. Report deflection & recovery.
- ❑ Impact test per TAS201. Report deflection, penetration & rupture.
- ❑ Cyclic test per TAS203. Report deflection & recovery.
- ❑ Test verifying structural properties of materials used.

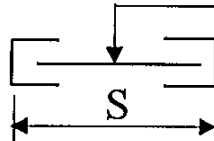


Requirements for Roll-Up Shutters :

Roll-Up Shutter Setup Combinations

Single Span Slat Applications Slat deflection not to exceed $L/30$ or 2"

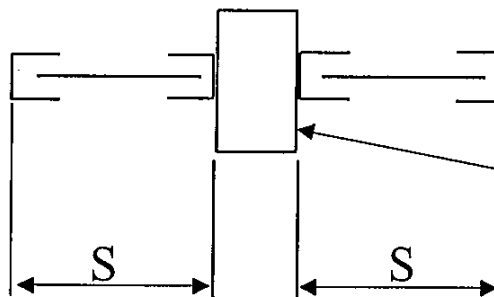
Single Span Slat



Slats

1 Specimen tested for: Uniform Static Load.
 3 Specimens tested for: Impact and Cyclic Load,
 to qualify maximum span "S"

Single Spans with Mullion

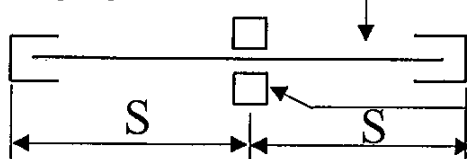


Mullion

Determined by rational analysis.

Multiple Span Slat Applications Combined deflection not to exceed $L/30$ or 2"

Multiple Span Slat



Header

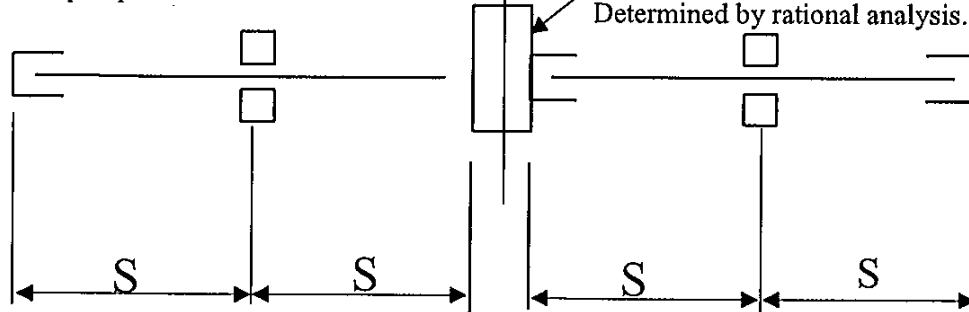
Determined by rational analysis.

Storm Bar

Determined by rational analysis.

Test 1 additional specimen (using weakest and strongest section) to qualify maximum height.

Multiple Spans with Mullion



Mullion

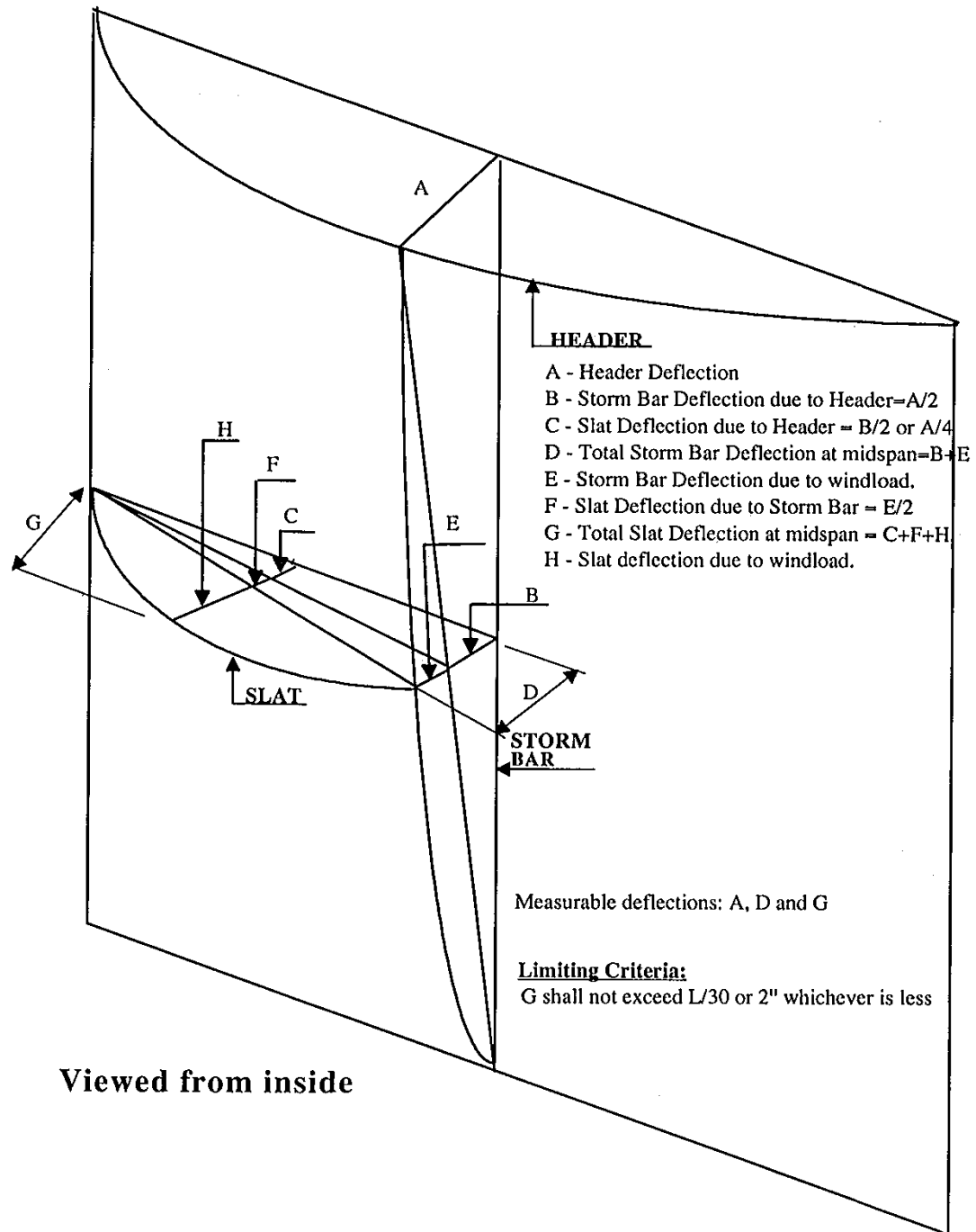
Determined by rational analysis.



Requirements for Roll-Up Shutters :

Deflection Chart

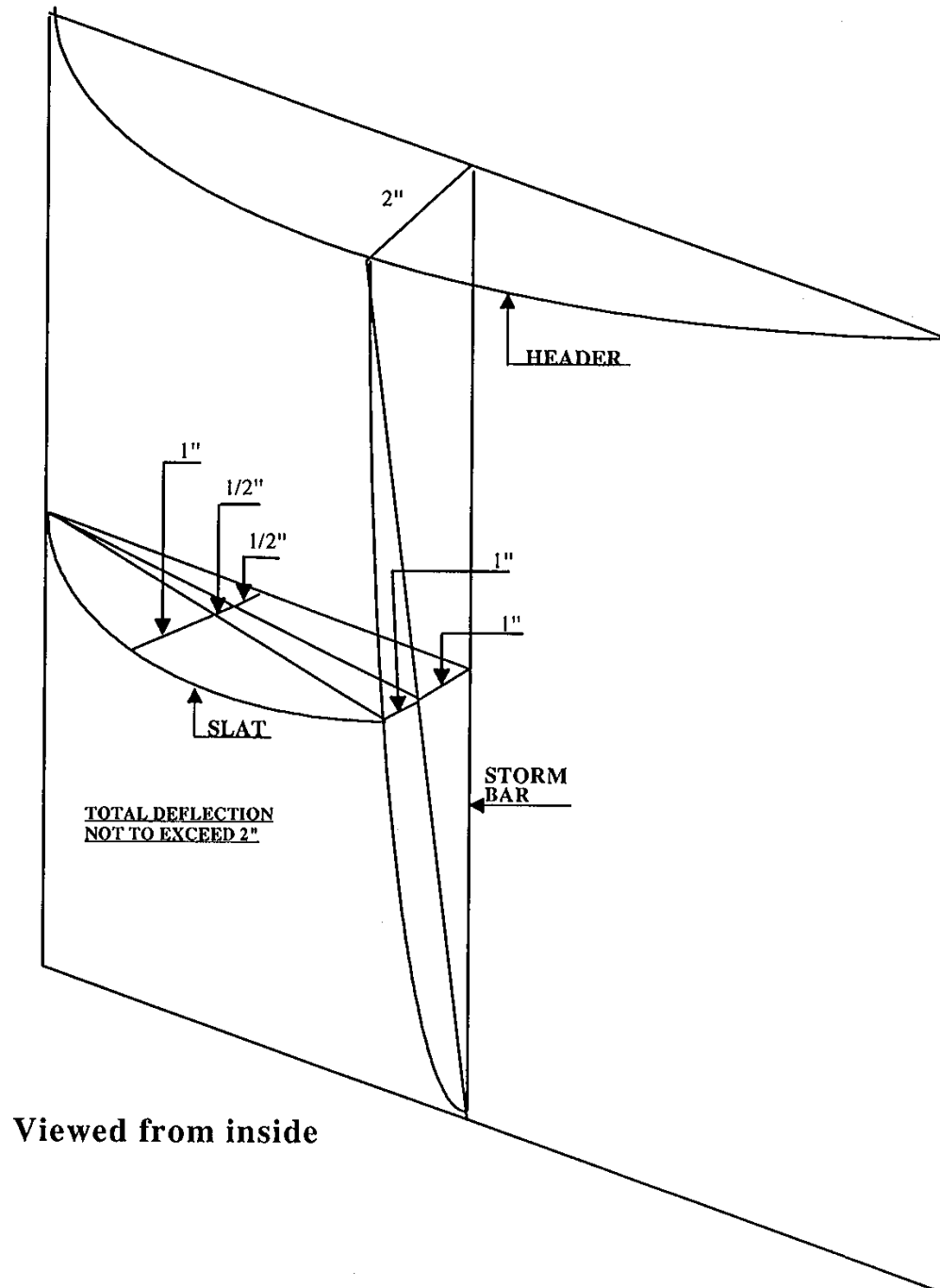
Showing multiple Roll-Up shutter setup
with Header, Storm Bar and Slat combined deflections.



Requirements for Roll-Up Shutters :

Deflection Chart (Showing one option used to simplify design and calculations)

Showing multiple Roll-Up shutter setup
with Header, Storm Bar and Slat maximum allowed deflections.



Revised: 04-21-26

#0270 Shutters - Revised 2026 April

Internet mail address: bldgdept@miamidade.gov



Homepage: <http://www.miamidade.gov/economy>