

CATERPILLARS

Caterpillars are the larval stages of butterflies and moths

PUSS CATERPILLAR

Megalopyge opercularis



Up to an inch in length, also called Asp caterpillars

IO MOTH CATERPILLAR

Automeris io



One or two inches in length

SADDLEBACK CATERPILLAR

Aracharia stimulea



One or two inches in length

CATERPILLAR STINGS

- Stings generally are not life-threatening, but pain may necessitate medical care.
- Symptoms are immediate: intense burning pain; localized welting of skin; headache; abdominal distress; rashes; blisters; and sometimes numbness, chest pain, or difficulty breathing.
- Stinging is accidental when caterpillar is dislodged from foliage.
- Found on many host plants including palms, roses, oaks and citrus.

FIRST AID FOR CATERPILLAR STINGS

- Apply tape to sting area and gently pull off to remove any remaining spines.
- Wash area with soap and water.
- Apply ice to alleviate pain and swelling.
- Call the Poison Information Center for assistance.
- **CALL 911** if symptoms continue to worsen, or if patient develops swelling; redness; hives or itching away from sting; difficulty breathing; weakness; tingling; infected or open sores; or lasting nausea.

AMPHIBIANS

BUFO TOAD

Bufo Marinus

- Toxin is a milky fluid secreted by the large parotid glands at base of toad's head.
- Eggs and tadpoles also are poisonous.
- Toxins may be transferred by handling or ingesting a toad or secretions.
- Wash with soap and water if contact occurs.
- Bufo toads usually live near water and are most active at night.
- Pets are the most frequent victims. If a pet is poisoned, contact a veterinary clinic immediately.
- Call the Poison Information Center for assistance.
- **CALL 911** if patient develops severe irritation and pain to eyes, nose and throat; nausea; vomiting; seizures; or difficulty breathing.



May grow to 9 inches long and weigh 2 pounds

ARTHROPOD SCORPION

FLORIDA BARK SCORPION

Centruroides gracilis

- Stings are normally not life-threatening.
- Symptoms appear immediately, to include: pain and swelling at sting site (similar to a wasp sting).
- Nocturnal and prefer warm, dark, and secluded hiding places.
- Call the Poison Information Center for assistance.
- **Refer to First Aid** for Insect Stings and Bites.



Adults are 2-3 inches long

SPIDERS

WIDOWS

Latrodectus species

- Bites from Black Widows are potentially life-threatening.
- Call 911.
- Symptoms appear 1-2 hours after a bite, to include: sweating at bite site; chills; rigid abdomen; nausea; vomiting; and painful muscle cramps.
- Nocturnal and non-aggressive, but may bite if it feels threatened.
- Make their homes in warm, dry, and sheltered places.



Black Widow
1-inch leg span



Brown Widow



Red Widow

BROWN RECLUSE

Loxosceles reclusa

- Bites are not usually life-threatening, but may require medical care.
- Bites may go undetected at first.
- Symptoms appear 8-12 hours after bite, to include: pain, redness at bite site; and may progress to an open wound.
- Prefer dry, dark, and quiet hiding places.



Brown Recluse

Range of recluse spiders in the United States



Brown recluse are not native to South Florida

ARACHNIDS

HONEY BEES (EUROPEAN OR AFRICANIZED)

Apis mellifera

- Multiple stings may be life-threatening and may require medical attention.
- Sting symptoms (local) are immediate: pain, swelling, redness.
- Will nest in almost any cavity or sheltered space.



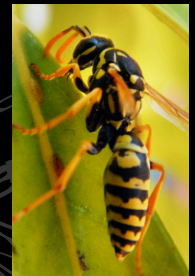
ADDITIONAL BEE SAFE INFORMATION

- Individual bees sting only once, then die.
- Africanized Honey Bees (AHBs) are commonly found in Florida.
- AHBs aggressively defend their hives.
- If you see a nest or swarm of bees, stay away.
- Call a bee removal service.
- If you are attacked, protect your face and RUN to shelter.
- Do not try to hide in water.
- Do not take the threat of these bees lightly!

WASPS

Numerous families and species

- Not usually life-threatening, but multiple stings may require medical attention.
- Individual wasps may sting multiple times.
- Sting symptoms are immediate: pain, swelling, redness.
- Usually nest in sheltered areas; nests vary in appearance and structure.



HORNETS

Vespula, Dolichovespula species

- Not usually life-threatening, but multiple stings may require medical attention.
- Individual hornets may sting multiple times.
- Sting symptoms (local) are immediate: pain, swelling, redness.
- Nest in trees, under shelter, and underground.



FOR MULTIPLE STINGS AND SYMPTOMS INCLUDING DIFFICULTY BREATHING, NAUSEA, VOMITING, CHILLS AND WEAKNESS, **CALL 911**



European and African bees look the same



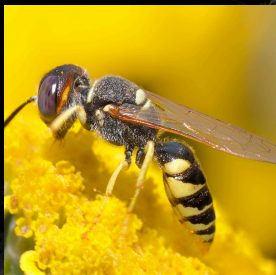
Adult centipedes may grow to 6 inches



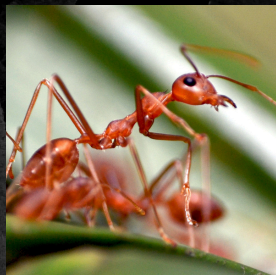
Hives will be defended



Blister beetles are often brightly colored



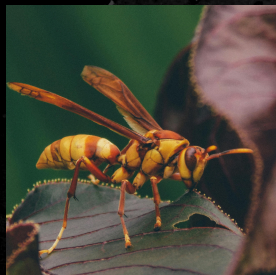
There are many families and species of wasps



Fire ants grow to about 1/4 inch long



Paper wasp's nest



Hornets are also known as "Yellowjackets"

FLORIDA BLUE CENTIPEDE

Scolopendra viridis

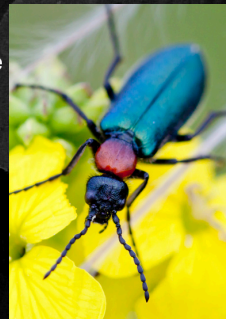
- Centipede bites are not life-threatening.
- Symptoms are immediate: pain, swelling at bite site (similar to a bee sting).
- Centipedes have claws adapted as fangs to grasp and bite.
- Nocturnal and prefer damp, dark hiding places.



BLISTER BEETLES

Family Meloidae, numerous species

- Superficial exposure to blister beetle juice is not life-threatening.
- Ingestion of significant amounts of juice, or beetles, is highly toxic to mammals.
- Symptoms of topical exposure are blistering of skin and local discomfort.
- May be seen feeding on the floral parts of crops and garden vegetables.



FIRE ANTS

Solenopsis invicta

- Symptoms are immediate: burning pain, swelling, itching.
- Pustules appear in about 24 hours and may persist up to 10 days.
- Secondary infection is common.
- Very aggressive when disturbed.
- Prefer dryer ground, but may be found in any habitat.



FIRST AID FOR INSECT STINGS AND BITES

- Always be aware of rare, but serious, allergic reactions!
- If a stinger is left behind, do not pull out; remove by scraping with a dull edge (such as a credit card).
- Wash area with soap and water.
- Apply ice to alleviate pain and swelling.
- Call the Poison Information Center for assistance.
- **CALL 911** if symptoms continue to worsen, or if patient develops swelling; redness; hives or itching away from sting/bite; difficulty breathing; weakness; tingling; infected or open sores; or lasting nausea.

AVOIDING DANGEROUS CRITTERS

- Be cautious when outdoors: wear gloves and closed-toe shoes when gardening or working in the yard.
- Be aware of your surroundings, especially when outdoors. It's no fun to stand on an ant nest!
- Do not put your hands or feet in places that may be hideaways for dangerous critters.
- Check your shoes before putting them on... dangerous critters may have hidden in them!
- Look and listen for persistent buzzing sounds around your home and yard; there may be honey bees nesting. If you hear them: stay away, do not disturb, and call professional pest control to remove them.
- Respect all creatures – even tiny ones can cause injury!

DANGEROUS CRITTERS IN YOUR BACKYARD

Miami-Dade Fire Rescue offers this program intended for students and aimed at prevention, safety, and first aid for bites and stings from dangerous critters. A presentation may be scheduled by calling 786-331-5000, ext. 4444, or by e-mailing mdfrantivenom@miamidade.gov.

EMERGENCY CONTACTS

CALL 911
FLORIDA POISON INFORMATION CENTER NETWORK
800-222-1222

MIAMI-DADE FIRE RESCUE

9300 NW 41ST Street, Miami, FL 33178
786-331-5000
www.miamidade.gov/mdfr

PUBLISHED BY THE MIAMI-DADE FIRE RESCUE VENOM RESPONSE BUREAU

Non-emergency: 786-331-4454
Fax: 786-331-4454
mdfrantivenom@miamidade.gov
www.venom1.com
786-331-5000
www.miamidade.gov/mdfr



DANGEROUS CRITTERS OF FLORIDA



MIAMI-DADE FIRE RESCUE VENOM RESPONSE TEAM