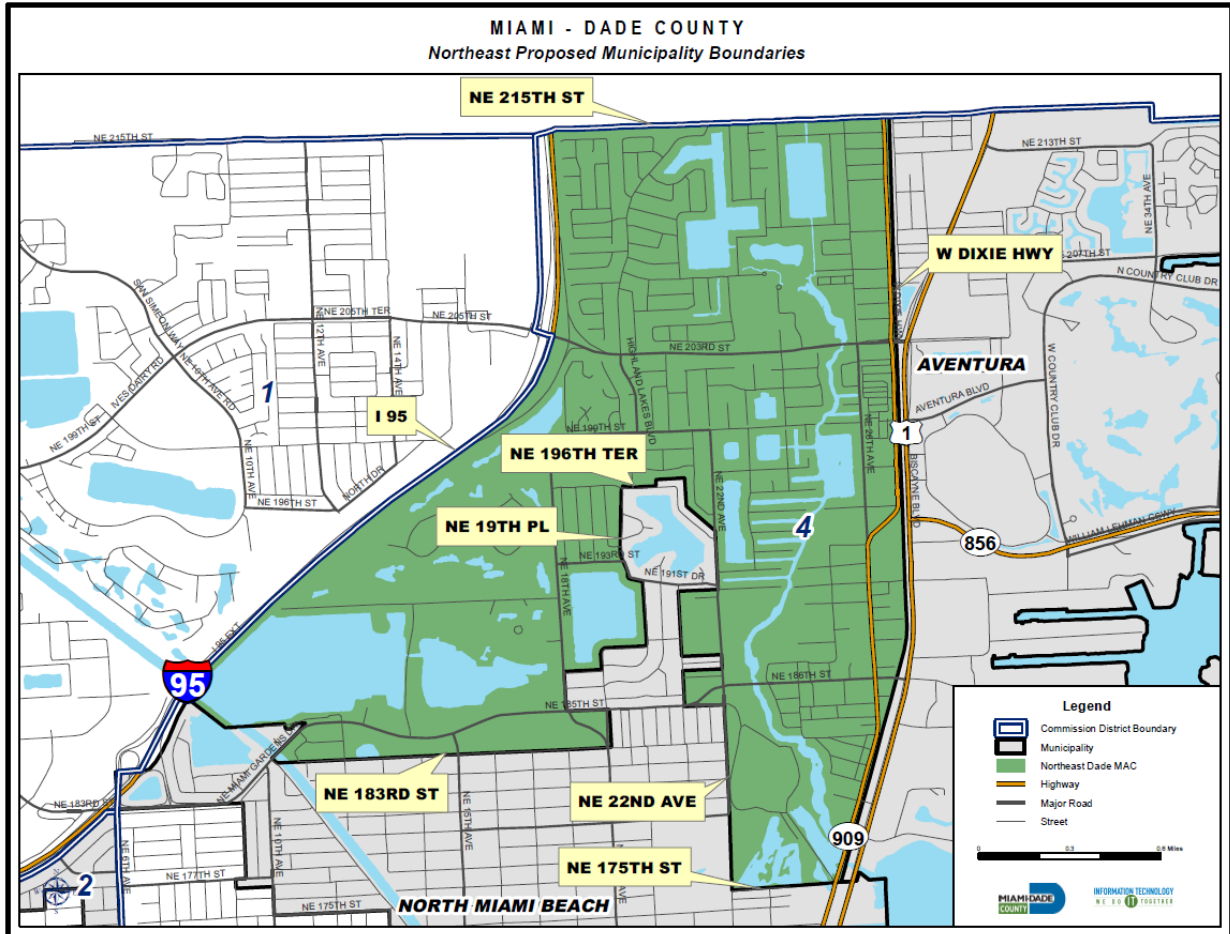


Miami-Dade County Board of County Commissioners
Public Hearing on Proposed Incorporation of the Northeast Dade Area
Tuesday, June 5, 2018 at 9:30 A.M.
Board of County Commission Chambers
111 N.W. 1st Street, Stephen P. Clark Center, Miami, FL 33128

Pursuant to section 20-23 of the Miami-Dade County Code, the Board of County Commissioners will consider the proposed incorporation of the Northeast Dade area at a public hearing. At the conclusion of the public hearing, the Board of County Commissioners will determine whether to submit this proposed incorporation to area voters. All interested persons are invited to attend this meeting and express their views. The proposed incorporation area is shown on the map below and generally bounded by: Interstate 95 (Westernmost); Dixie Highway/Biscayne Boulevard (Easternmost); City of North Miami Beach Limits (Southernmost); and NE 215 Street/County line (Northernmost).



To learn more about projected revenues and expenditures, municipal type services, millage rates, and general information regarding the creation of the proposed municipality, you may visit <http://www.miamidade.gov/incorporationandannexation/northeast-dade.asp>.

If you have questions or need additional information please call (305) 375-5143. For sign language interpreter services, call (305) 375-5143, at least five business days in advance.