

The logo of Miami-Dade Fire Rescue is a circular emblem with a yellow border. Inside the border, the word "FIRE" is written in yellow at the top, "MIAMI-DADE" in white in the middle, and "FLORIDA" in white at the bottom. The center of the emblem features a green palm tree and a blue sun. The background of the emblem is a light blue and green gradient.

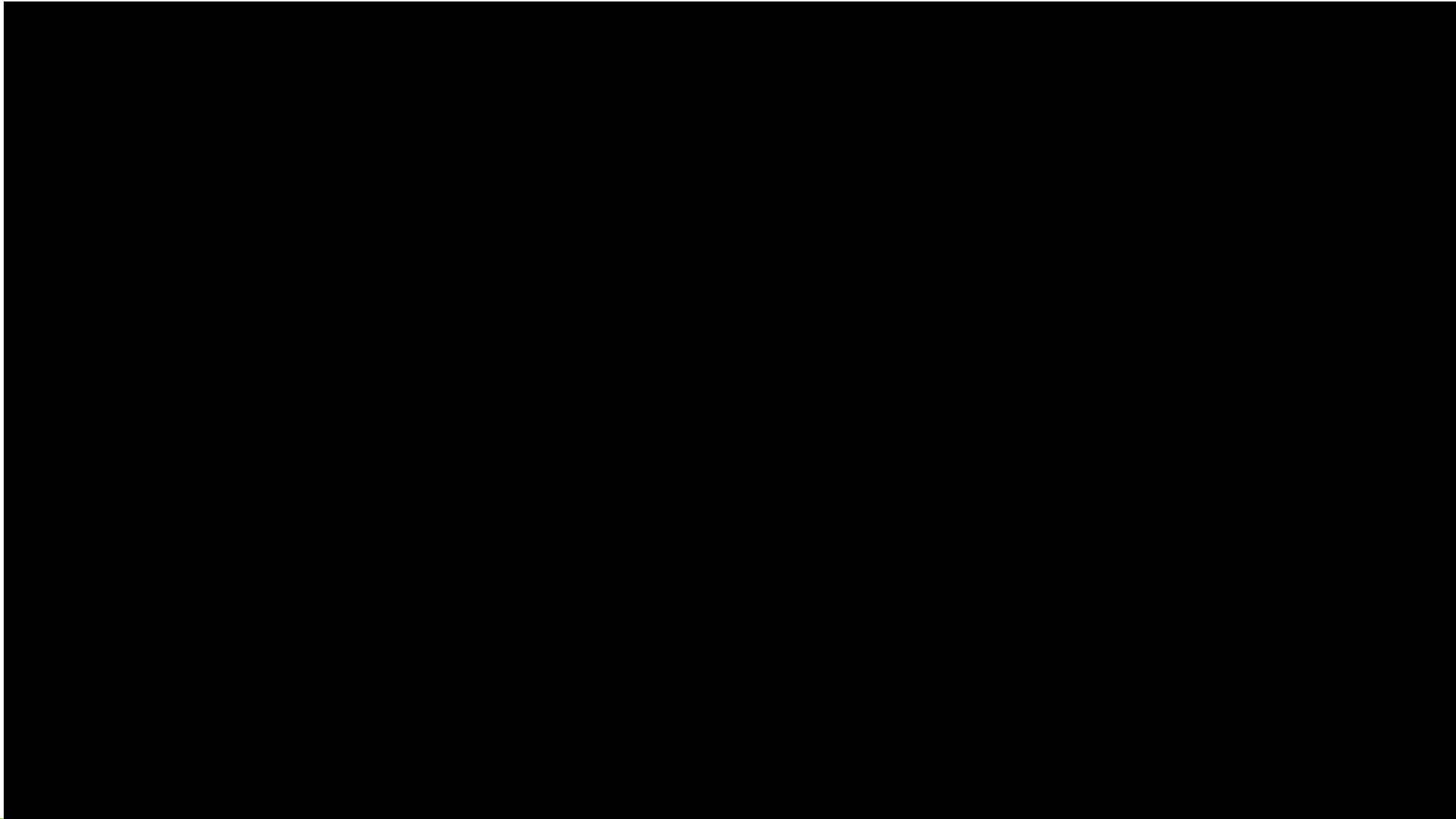
# **Miami-Dade Fire Rescue Service Delivery to North Central Dade Municipal Advisory Committee**

---

ARTHUR L. HOLMES, JR., DEPUTY FIRE CHIEF  
*ON BEHALF OF*  
RAIED S. JADALLAH, FIRE CHIEF

# MDFR Overview

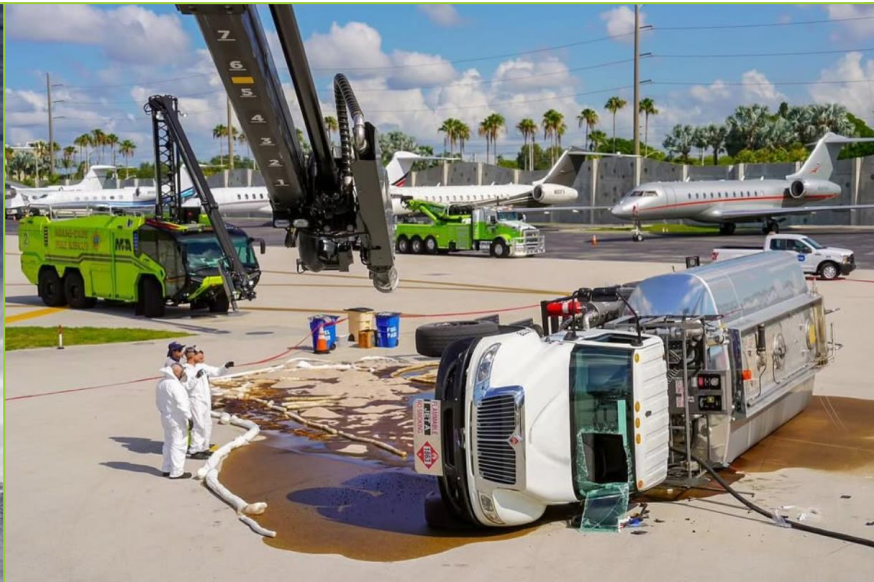
*Always Ready, Proud to Serve*



# MDFR Overview

## *Always Ready, Proud to Serve*

- Established in 1935
- 6<sup>th</sup> Largest Fire Department in the United States and Largest in the Southeast
- Responds to nearly 300,000 incidents annually
- Serves Unincorporated Miami-Dade County and 29 Municipalities
- ISO Class 1
- Internationally Accredited by the Commission on Fire Accreditation



# MDFR Overview

## *Always Ready, Proud to Serve*

- 72 Fire-Rescue Stations
- Over 500 Firefighters On-Duty Daily
- 173 Frontline Units
  - 67 ALS Transport Units, 67 Suppression Units, 25 Specialty Units & 14 Battalion Chiefs
- 3,110 Employees - 2,417 Sworn, 693 Professional Staff



# MDFR Overview

## All-Hazards Fire-Rescue Department

- Fire Suppression
- Emergency Medical Services
- Technical Rescue
- Hazardous Materials
- Air Rescue
- Dive Rescue
- Ocean Rescue
- Marine Firefighting and Rescue
- Aviation Rescue and Firefighting
- Urban Search and Rescue
- Community Paramedics
- Tactical Paramedics
- Fire Prevention and Code Enforcement
- Public Education



# MDFR Service to North Central Dade MAC

MDFR currently serves the MAC and will continue to do so, should the area become incorporated.

**MDFR responds to more than 18,000 incidents annually in the MAC.**

Three (3) MDFR fire-rescue stations are located within the boundaries of the proposed area.



**Model Cities Fire-Rescue Station 2**

- 13 personnel
- 2 Rescues
- 1 Engine
- 1 Battalion Chief
- 1 Basic Life Support Transport Unit (BTU)



**West Little River Fire-Rescue Station 7**

- 7 personnel
- 1 Rescue
- 1 Engine



**Opa-locka Fire-Rescue Station 26**

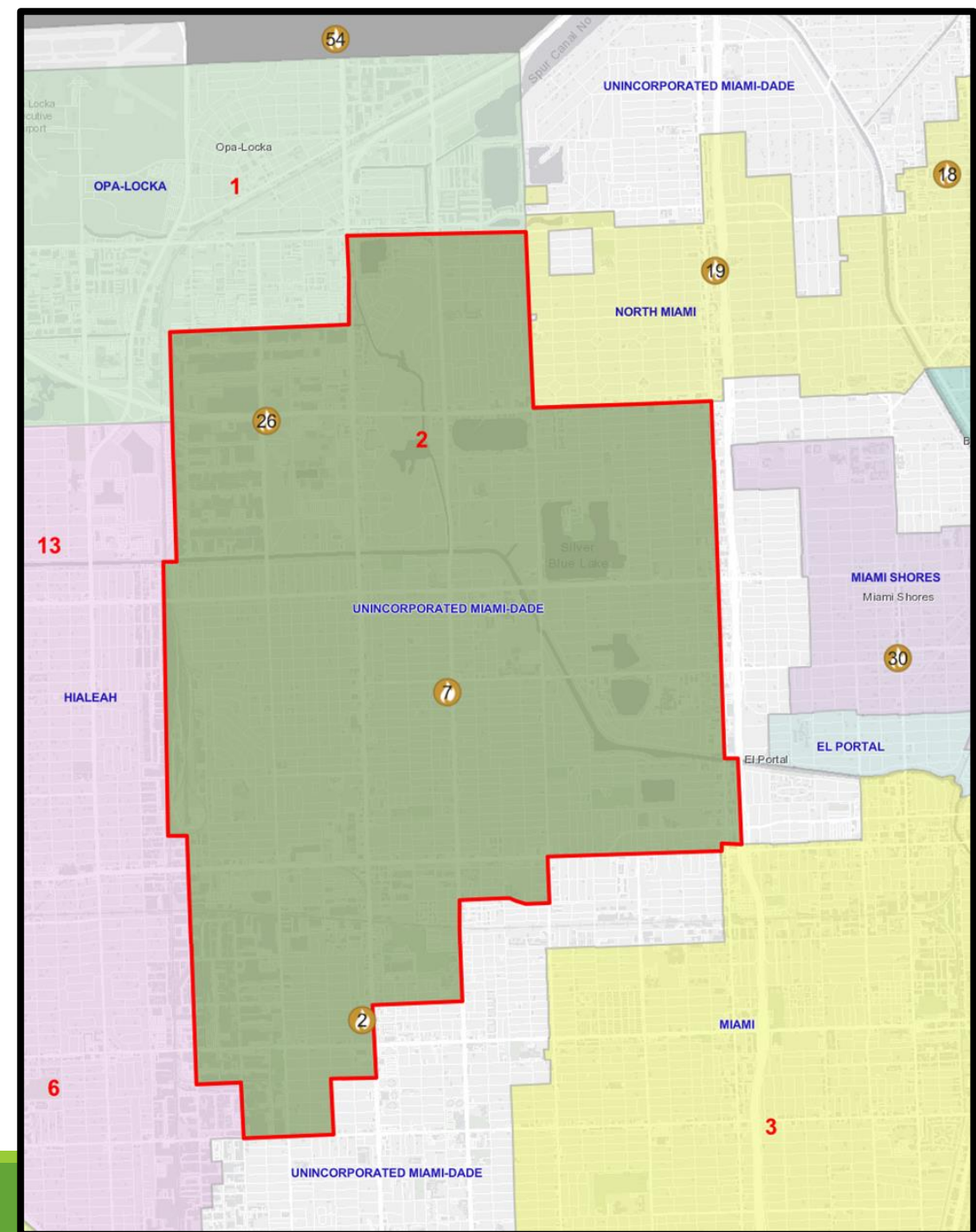
- 7 personnel
- 1 Rescue
- 1 Platform



# MDFR Service to North Central Dade MAC

## Within 2 miles of the MAC:

- ❖ 8 stations
- ❖ 26 Units
  - ❖ 8 Rescues
  - ❖ 7 Suppressions
  - ❖ 1 Battalion Chief
  - ❖ 1 BLS Transport Unit
- ❖ 55 firefighters on-duty daily



# THANK YOU!

*We protect people, property and the environment by providing proactive responsive, professional and humanitarian fire rescue services essential to public health, safety and well-being.*

**“Always Ready, Proud to Serve”**