

Pre-Cast Concrete Meter Boxes, Section Plates, and Vaults

RQID1300082 - Verification of Availability

Find attached the “**Scopes of Work**” and “**Special Requirements**” for an upcoming **Invitation to Quote (ITQ)**. Please review to determine if you would be able to **satisfy the requirements** (as applicable), and **interested in responding**; if so, please check the appropriate areas below and respond to this email confirming the same. Please pay “**CLOSE**” attention to the various sections and the “**SPECIAL/MINIMUM**” requirements for each, and confirm your **ability** and **availability** to satisfy “**ALL**” sections/scopes.

See Sections ***I through III***, (and **all subsections**) – Paying very close attention to all Sections listed and the requirements/special requirements for each. (While you are ***not*** bidding at this time, be mindful your response strongly influences SBD’s determination as it relates to a potential **SBE Measure**). So please be diligent in your review of the information and respond accordingly, based on your ability to meet **ALL** the applicable requirements.

Are you able to satisfy the requirements of the attached documents (ITQ)?
YES ☐ NO ☐

Are you able to satisfy the “Scope”, (and related ASTM Standard C858-83(90) of the attached documents (ITQ)?
YES ☐ NO ☐

Do you have prior experience consistent with the requirements of this ITQ?
YES ☐ NO ☐

Are you able to make deliveries to the County within 30 calendar days of an order (Section II.F)?
YES ☐ NO ☐

Are you able to meet **ALL** the “Technical Specifications” of Section III, (A through N)?
YES ☐ NO ☐

☐ I am “NOT” interested in this solicitation.

Name of Firm: _____ SBE Exp. Date: _____

Owner’s Name: _____ Signature: _____

Please respond by **close of business, Wednesday March 6, 2013**. Any questions, feel free to contact me at the number below.

(Respond to the “**Verification**” whether you are interested or not (choosing “**Yes**” or “**No**”), as this helps SBD in the determination of measures).

Vivian O. Walters, Jr.
Contract Development Specialist II
Regulatory and Economic Resources Department
Small Business Development Division
111 NW 1st Street #19 Floor, Miami, FL 33128
walterv@miamidade.gov

☎ Office (305) 375-3138 | 📠 Fax (305) 375-3160

“Delivering Excellence Every Day”

INVITATION TO QUOTE (ITQ)
MIAMI-DADE COUNTY INTERNAL SERVICES DEPARTMENT / PROCUREMENT MANAGEMENT DIVISION
111 NW 1 STREET SUITE 1300, MIAMI, FL 33128

ITQ NO.: *; Precast Concrete Meter Boxes, Section Plates, and Vaults

SCOPE: Furnish and deliver concrete meter boxes, section plates and vaults manufactured in accordance with the applicable provisions of ASTM Standard C858-83(90) "Underground Precast Concrete Utility Structures", as modified herein, and per the specifications and drawings (Attachment A) in this solicitation.

I. INSTRUCTIONS FOR SUBMITTING QUOTE:

- A. Read this entire document and the General Terms and Conditions, and handle all questions in accordance with the terms outlined in paragraph 1.2(D) of the General Terms and Conditions. Send questions to Maggie Reynaldos at mtc@miamidade.gov, or at 305-375-4435.
- B. The deadline for this quote is **5:00 PM, *, 2013**. Quotes received after the deadline may not be considered. All quotes received, time and date stamped by the County, prior to the deadline will be accepted as timely submitted.
- C. Submit sealed quote (Bid / Quote Submittal Form, Affidavits, and required attachments) to:
Miami-Dade County Internal Services Department / Procurement Management Division
111 NW 1ST Street, Suite 1300, Miami, FL 33128
Attention: Maggie R. Reynaldos
- D. "ITQ No. *" should be clearly printed on the outside of the sealed envelope. Telephone, fax, or e-mail quotes will not be accepted.

II. TERMS AND CONDITIONS:

- A. The General Terms and Conditions of Miami-Dade County Procurement Contracts for Invitations to Bid are applicable to this solicitation. The General Terms and Conditions are posted online at <http://www.miamidade.gov/procurement/library/general-terms-and-conditions-itb.pdf>. Bidders that receive an award from Miami-Dade County through a competitive procurement process must anticipate the inclusion of these requirements in the resultant contract. These standard general terms and conditions are considered non-negotiable subject to the County's final approval.
- B. Paragraph 1.21 (Insurance Requirements) of the General Terms and Conditions does not apply to this solicitation.
- C. If a contract results from this solicitation, it will commence on the first calendar day of the month following approval of the award by the Board of County Commissioners, or designee, unless otherwise stipulated in writing by the County, and it is contingent upon the bidders' completion and submittal of all required documents. The contract shall expire on the last day of the last month of the twelve month period.
- D. The County shall have (4) four options to renew the contract on a year-by-year basis. Prior to the beginning of each optional term, the County may consider price adjustments based on the Producers Price Index, as published by the U.S. Department of Labor, Bureau of Labor Statistics, for Series Id: WPU1334 "Precast Concrete Products". It is the bidder's responsibility to request any price adjustment under this provision. Such request should be submitted at least 90 days prior to the expiration of the existing contract term if the price adjustment is to be effective on the first day of a renewed contract term. The County reserves the right to reject price adjustment requests, to negotiate prices, or to not exercise any otherwise available option to renew based on prices. Continuation of the contract is a County prerogative, and not a right of the bidder. This prerogative will be exercised only when such continuation is clearly in the best interest of the County. Should the bidder decline the County's right to exercise a renewal option, the County may consider the bidder in default which may affect the bidder's eligibility for future contracts.
- E. Award will be made to the two (2) lowest priced responsive and responsible bidders on a per-item basis. The lowest priced responsive and responsible bidder per item shall be designated as the primary bidder for that item

and the second lowest priced responsive and responsible bidder per item shall be designated as the secondary bidder for that item. While the County will award to multiple bidders to assure availability, and for the County's convenience, the primary bidder for each item shall have the primary responsibility to deliver under the contract. This multiple award does not exempt awarded bidders from fulfilling their contractual obligations. A bidder that fails to perform in accordance with contract requirements may be terminated in accordance with paragraph 1.25 of the General Terms and Conditions, and/or charged re-procurement costs.

- F. In the best interest of the County, the availability of material, geographic location and /or delivery time may be utilized as deciding factors for the basis of placing an order when it is determined by the County that a project is time sensitive to meet pre-established deadlines or it is an emergency situation.
- G. Except for County authorized price adjustments, proposed prices shall remain fixed and firm during the term of any contract resulting from this solicitation.
- H. Delivery to Miami-Dade Water and Sewer (M-DWASD) locations, or job sites throughout Miami-Dade County, is required within 30 calendar days of the receipt of an order.
- I. In addition to all other warranties that may be supplied by the bidder, the bidder shall warrant its product and/or service against faulty labor and/or defective material for a minimum period of one (1) year after the date of acceptance of the labor, materials and/or equipment by the County. This warranty requirement shall remain in force for the full period identified above; regardless of whether the bidder is under contract with the County at the time of defect. Any payment by the County on behalf of the goods or services received from the bidder does not constitute a waiver of these warranty provisions.
- J. All items to be purchased under this solicitation, and all delivery actions taken by the bidders, shall be in accordance with all applicable governmental and industry standards, including those issued by the American National Standards Institute (ANSI), the American Society for Testing Materials (ASTM), the Environmental Protection Agency (EPA), the Instrument Society of America (ISA), the International Standards Organization (ISO), the National Fire Protection Association (NFPA), the National Institute of Safety Hazards (NIOSH), the National Sanitation Foundation (NSF), and the Occupational Safety and Health Administration (OSHA).
- K. The County may use any contract resulting from this solicitation to purchase items similar to those listed in this solicitation. The County may request quotes from the bidders in the contract and award the similar items to the responsive bidder with the lowest price, or purchase the items through a separate solicitation.
- L. Although this solicitation is specific to M-DWASD's identified needs for this commodity, any County department or agency may avail itself of a resulting contract and purchase any and all awarded items from the successful bidders at the contract prices.
- M. Each item proposed in response to this solicitation shall be accompanied by "Evaluation Data". "Evaluation Data" shall be defined as complete sets of factory information sheets (specifications, brochures, etc.), and catalog data (information showing construction details, drawings, and appurtenances). The Evaluation Data, as a whole, must provide sufficient information to allow the County to ascertain that the proposed products meet all specifications.

III. TECHNICAL SPECIFICATIONS:

- A. Forms shall be made of a non-porous material with smooth surfaces and shall be accurate and strong enough to maintain the structure's dimensions within one half of the allowable tolerance given in Section 3.4 of ASTM C858-83(90).
- B. Forms shall be cleaned before each use, and shall be free of paint or other protective coatings that might cling to the surface of the concrete. Releasing agents applied to the form to aid in breaking the bond shall not be injurious to the concrete.
- C. Steel reinforcing shall be securely positioned in the form to maintain the concrete cover shown on the Standard Details.

- D. The aggregates shall be sized, graded, proportioned and thoroughly mixed in a batch mixer with proportions of cement and water that will produce a homogeneous concrete having a compressive strength of 3500 PSI at 28 days of age for the boxes and plates and 3000 PSI for the vaults after the same curing period.
- E. Batched concrete shall be made in standard concrete mixers only, not in mortar boxes, wheelbarrows or similar equipment.
- F. Mixers shall be standard mechanical (power-driven) rotary type for concrete. Mixers normally used for mortar or plaster mixing shall not be used.
- G. Concrete shall be placed either by gravity into the form at a rate such that the concrete is plastic at all times and flows readily into all parts of the form and around all reinforcement steel without segregation of materials, or by high-speed pneumatic rammer resulting in dense, evenly compacted concrete without disturbing the reinforcement. The surfaces from top to bottom shall show uniform compaction.
- H. The top surface of molded items shall be flat and finished smooth while in the mold. Capping will not be permitted. Corners and edges shall be rounded.
- I. Curing shall be by any method or combination of methods that will develop the required compressive strength within 28 days or less.
- J. The quality of materials, manufacturing process, and the finished units shall be subject to inspection by the M-DWASD, and the supplier shall afford access to manufacturing facilities for this purpose, if so required.
- K. Precast units shall be subject to rejection, either at the manufacturing plant or at delivery, shall any delivered product fail to conform to any specified requirement.
- L. The following imperfections shall also be cause for rejection:
1. Defects that indicate any imperfect concrete mixing and molding.
 2. Surface defects such as honey-combed or open textured and damaged areas which would affect the structural adequacy.
 3. Repaired areas or capping.
 4. Improper radius at corners or improper tolerance.
- M. All materials used in the production of the concrete meter boxes, section plates and vaults shall be new and of recent manufacture.
1. Fine aggregate for concrete mixes shall consist of sand or stone screenings, composed of hard durable grains, free of foreign matter such as loam, clay dirt, organic matter or other impurities. Fine aggregate shall conform to the following gradation requirements:

<u>Size Sieve</u>	<u>Percent Passing</u>
3/8"	100
No. 4	90 to 100
No. 8	70 to 95
No. 16	50 to 85
No. 30	30 to 70
No. 50	10 to 45
No. 100	0 to 10
 2. Coarse aggregate for concrete mixes shall consist of gravel, broken stone or local limerock. It shall be hard, durable and free of foreign matter such as loams, clay, dirt, organic matter or other impurities, and free of adherent coatings. Coarse aggregate shall conform to the following gradation requirements:

Meter Boxes and Sectional Plates:

<u>Size Sieve</u>	<u>Percent Passing</u>
3/4"	100
1/2"	90 to 100
3/8	40 to 70
No. 4	0 to 15
No. 8	0 to 05

Vault:

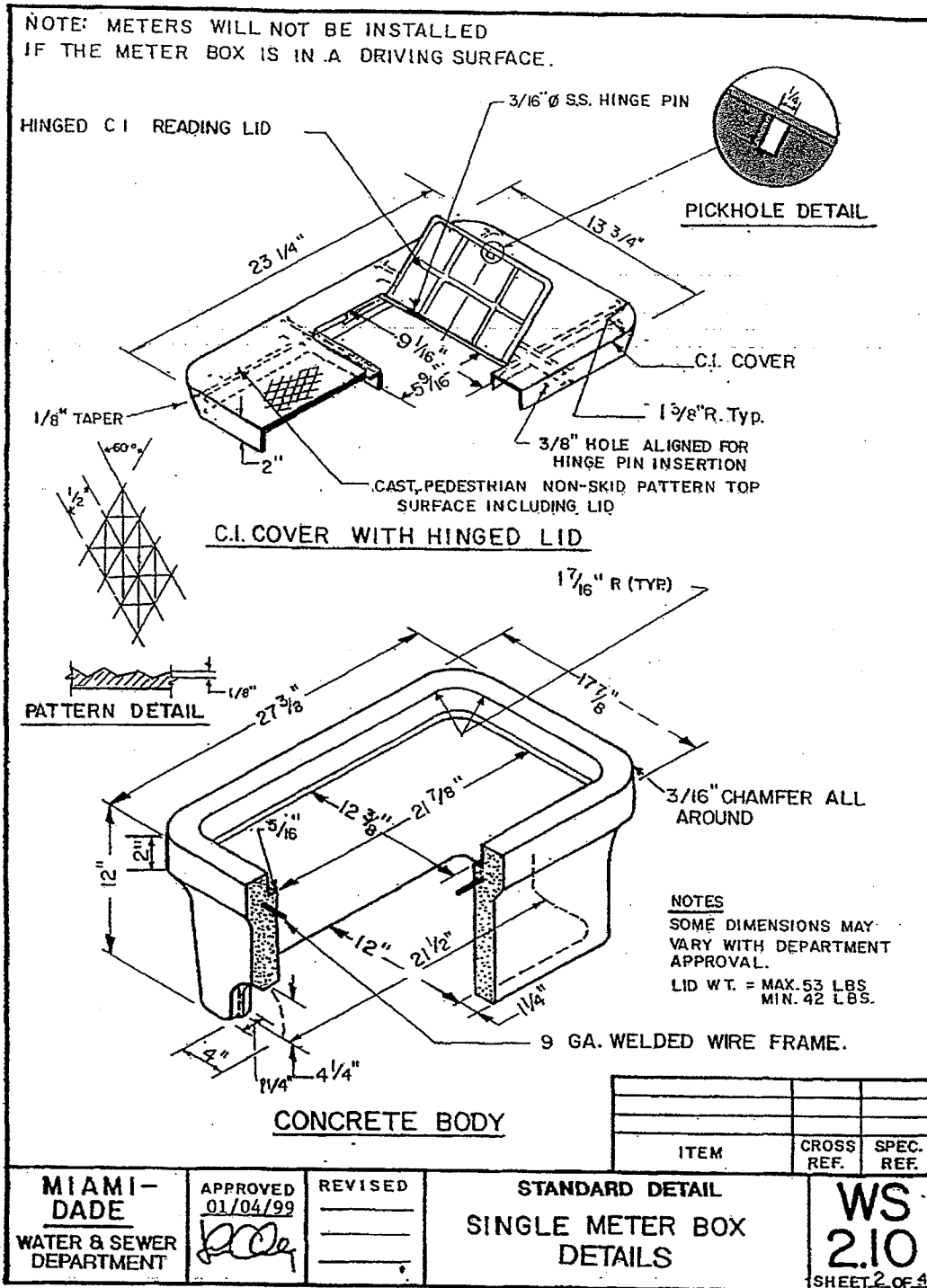
<u>Size Sieve</u>	<u>Percent Passing</u>
1 1/2"	100
1"	95 to 100
1/2"	25 to 60
No. 4	0 to 10
No. 8	0 to 6

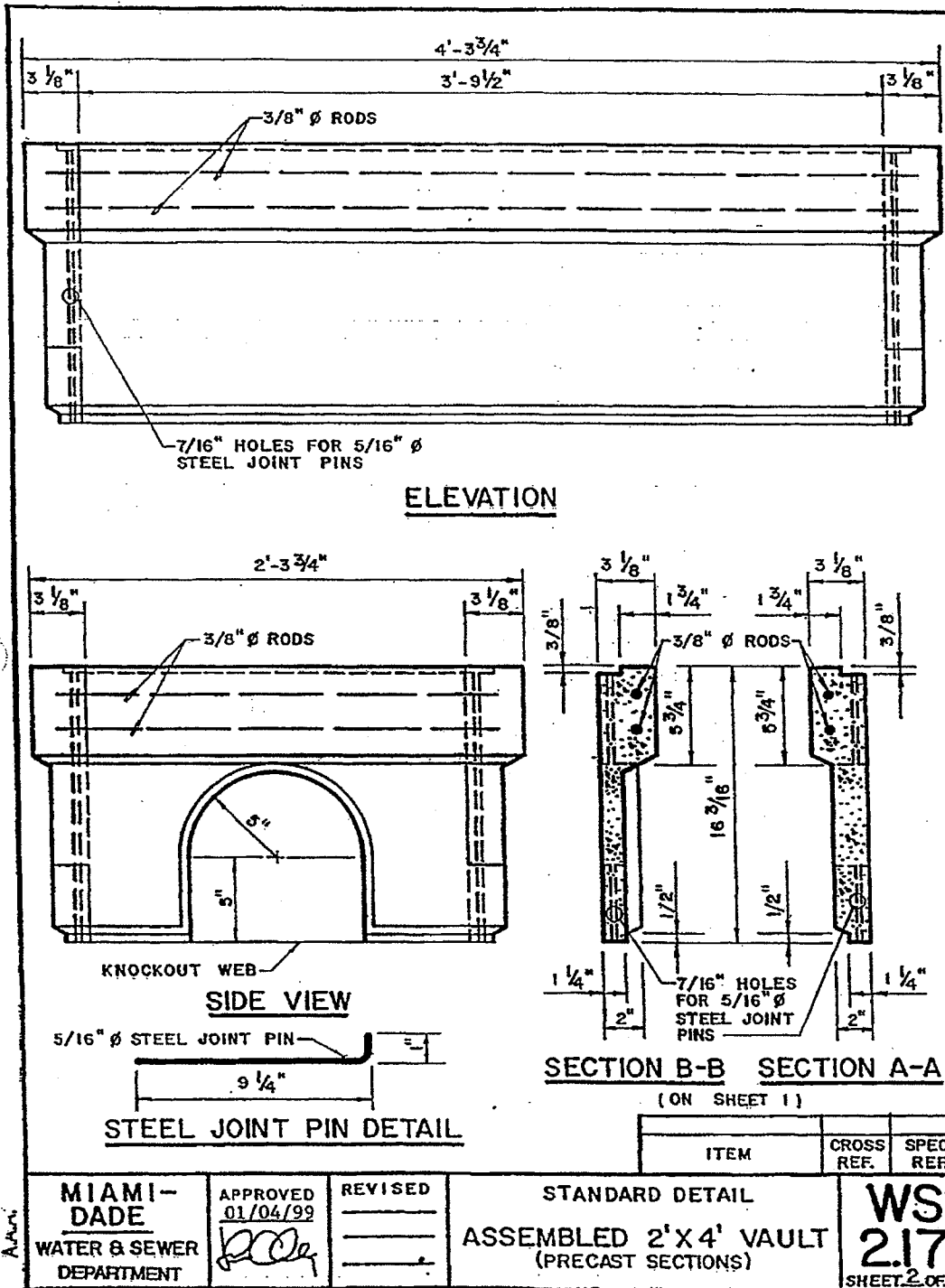
3. Cement shall be a standard brand of Portland cement meeting the requirements of ASTM Standard C150-92, "Portland Cement", Type I.
4. All reinforcing steel shall be free of rust, grease, dirt or mortar, and shall be thoroughly cleaned of any such foreign matter or loose mill scale before being placed in position.
5. Wire reinforcement shall conform to ASTM Standard A82-90N, "Steel Welded Wire, Fabric, Plain, for Concrete Reinforcement".
6. Wire mesh reinforcement shall conform to ASTM Standard A185-90N, "Steel Welded Wire, Fabric, Plain, for Concrete Reinforcement".
7. Bar reinforcement shall conform to ASTM A615-90, "Deformed and Plain Billet-Steel Bars for Concrete Reinforcement" Grade 60, deformed, except that steel manufactured by the Bessemer process will not be accepted.
8. Water used in mixing concrete that is not in the form of surface moisture on the aggregate shall be from the M-DWASD's water supply or other approved source.

N. Prior to the manufacture of any of the products listed in this solicitation, or any similar items ordered pursuant to a contract resulting from this solicitation, M-DWASD may request a statement from the successful bidder giving the following information:

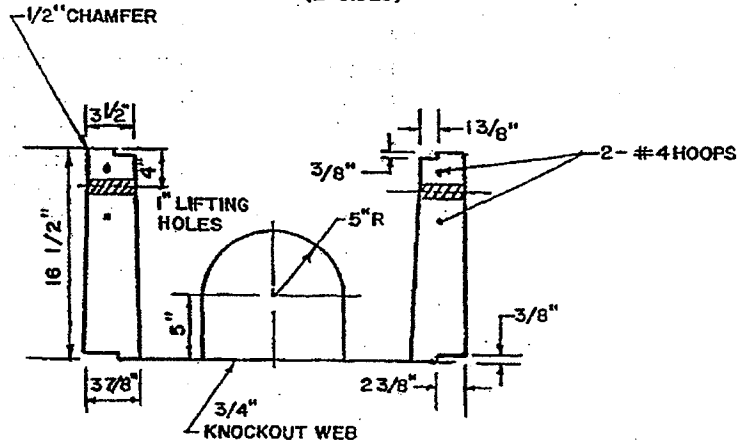
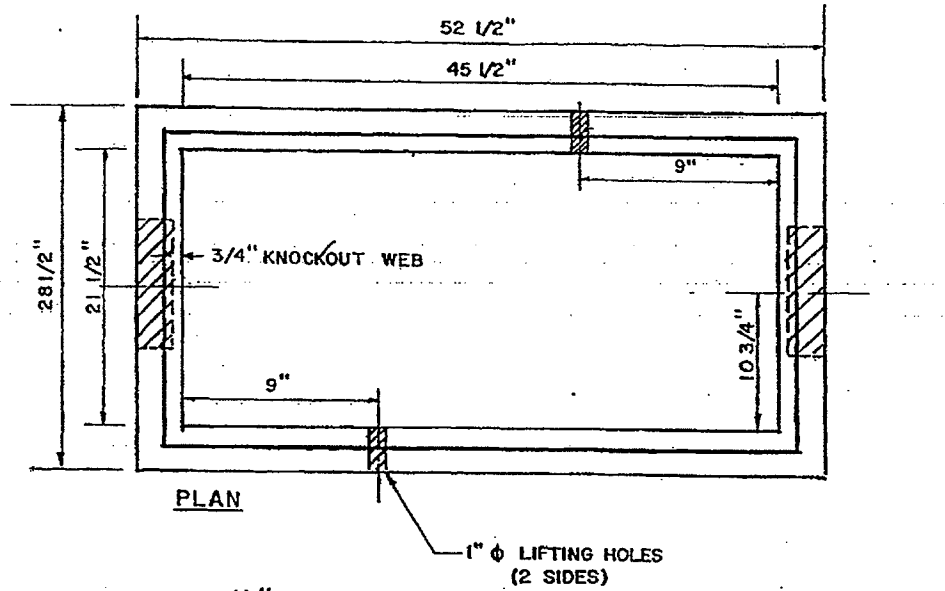
1. The source and type of cement.
2. The source and specific gravities of the aggregates.
3. The concrete mix proportions, and strength at 28 days.
4. Name of admixtures, if any.
5. Mill certificates for the reinforcement steel.
6. Source of water.

**Attachment A
Drawings**





AF 26093



ITEM		CROSS REF.	SPEC. REF.
STANDARD DETAIL			
2'x4' PRECAST METER VAULT			
FOR NON-TRAFFIC AREAS			
WS			
2.17			
SHEET 5 OF 5			

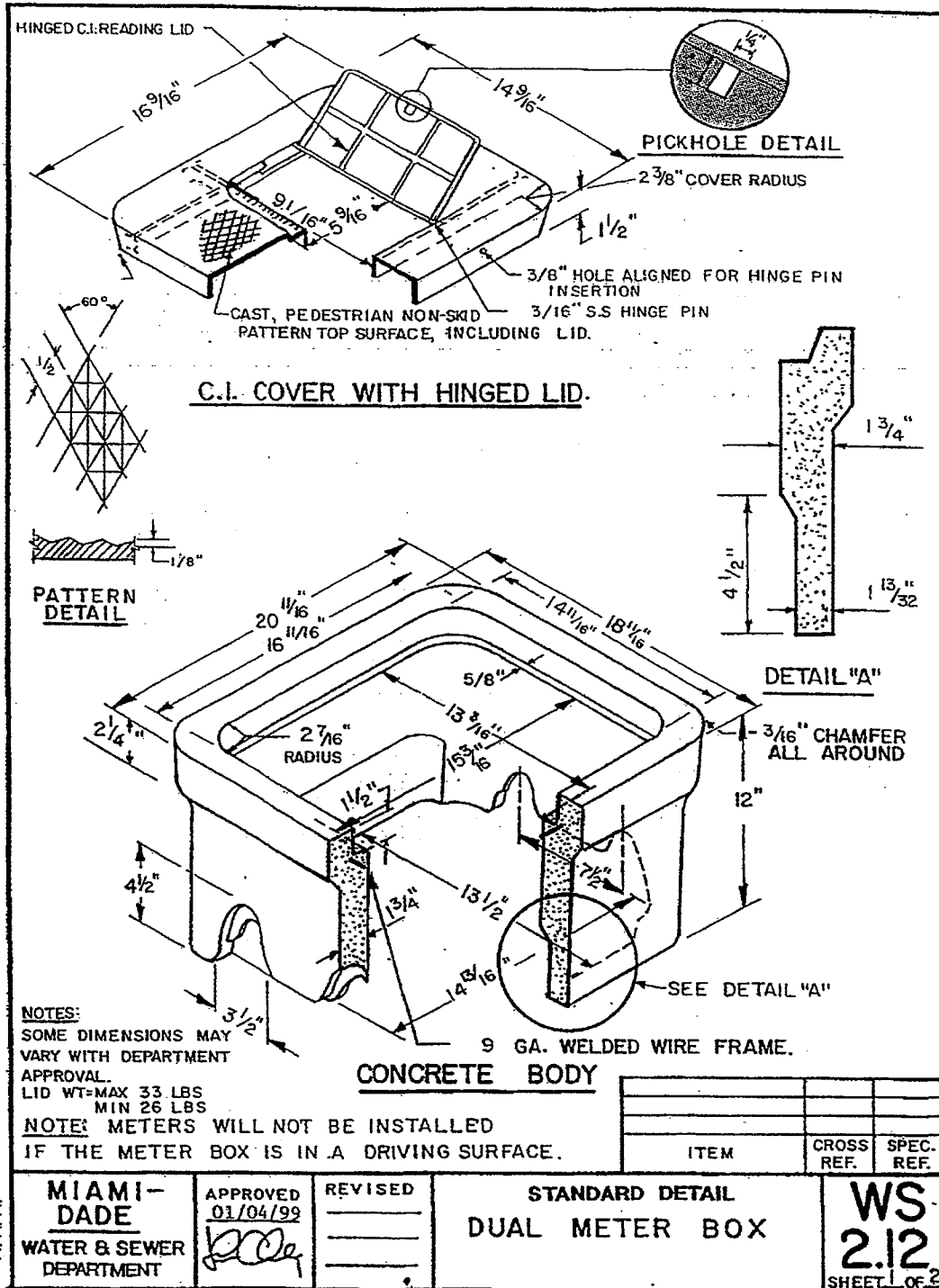
AAA
MIAMI-DADE
WATER & SEWER
DEPARTMENT

APPROVED
01/04/99

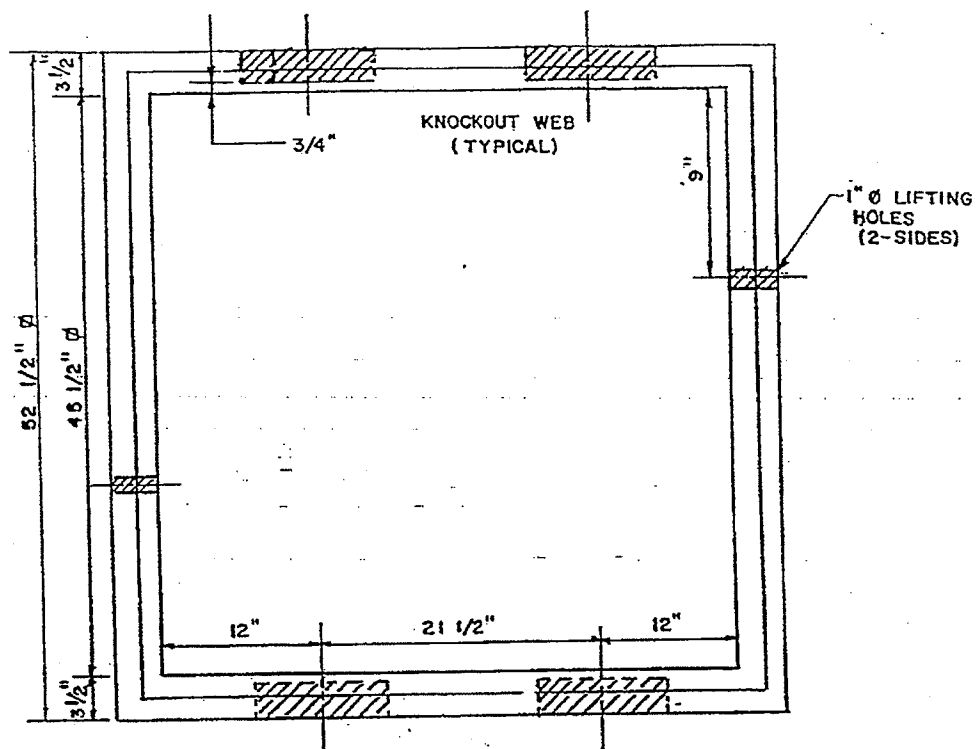
[Signature]

REVISED

STANDARD DETAIL
2'x4' PRECAST METER VAULT
FOR NON-TRAFFIC AREAS

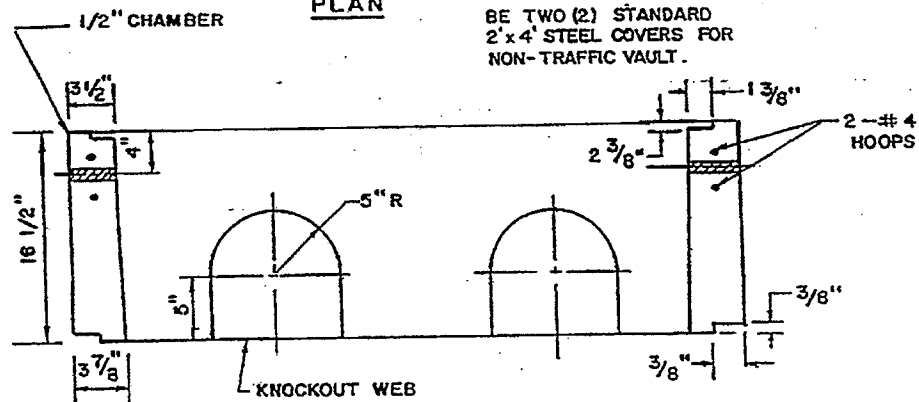


AF 26093



PLAN

NOTE: VAULT COVER TO BE TWO (2) STANDARD 2'x4' STEEL COVERS FOR NON-TRAFFIC VAULT.



SECTION

2'x4' STEEL COVERS	WS 2.17	
ITEM	CROSS REF.	SPEC. REF.

AAA
MIAMI-DADE
WATER & SEWER
DEPARTMENT

APPROVED
01/04/99

[Signature]

REVISED

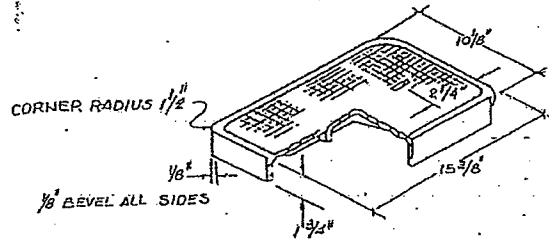
STANDARD DETAIL
4' x 4' PRECAST METER
VAULT FOR NON TRAFFIC
AREAS

WS
2.20
SHEET 2 OF 2

MIAMI-DADE COUNTY

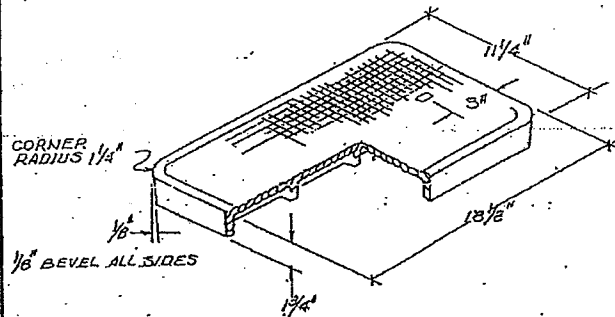
BID NO.:

CAST IRON METER AND VALVE BOXES AND COVERS, AND MANHOLE FRAMES
AND COVERS



STYLE 36T
CAST IRON COVER
(10 1/2" X 17 1/4" METER BOX)

NOTE:
LIFTING HOLES ARE 1/4" X 1"
WEIGHT - MAX. 27 LBS.
MIN. 22 LBS. (19 lb.)



STYLE 37T
CAST IRON COVER
(12" X 20" METER BOX)

MIN. WT.
27 LBS.

NO. 272
BLANK
CHECKED

Manufactured by Vestac Foundry / Sweetwater, Tenn. USA.
US Foundry / Melbay, Pl. / U.S.A.
VEL Foundry / Calcutta, India.
DIAGRAM PAGE 2 OF 14

5-3044	REVISION	R.
CAST IRON COVERS		
10 1/2" X 17 1/4" BOX (3/4" METER)		
12" X 20" BOX (1" METER)		
MIAMI-DADE		
WATER AND SEWER AUTHORITY		
DATE MAY 30, 1990	SCALE N.T.S.	
REVISION	W-8446-C	