



## TRANSPORTATION AND PUBLIC WORKS

### RIDERSHIP TECHNICAL REPORT

*Division of Performance Analysis*



February 2025

# Table of Contents

<i>Table of Contents</i>	2-3
<b>All Modes Overview</b>	<b>4</b>
Total Monthly Weekday, Saturday and Sunday Monthly Boardings By Mode	5
Average Weekday, Saturday and Sunday Boardings by Mode	6
Metrobus Total Monthly Ridership Comparisons by Fiscal Year	7
Metrorail Total Monthly Ridership Comparisons by Fiscal Year	8
Metromover Total Monthly Ridership Comparisons by Fiscal Year	9
STS Total Monthly Ridership Comparisons by Fiscal Year	10
All-Modes Combined Total Monthly Ridership Comparisons By Fiscal Year	11
All Modes Combined Total Monthly and Average Weekday Ridership – Year over Year Comparison Charts	12
Average Weekday Ridership – Modal Splits	13
Daily Ridership for All Modes Combined since 2/1/20	14
<b>Metrobus</b>	<b>15</b>
Better Bus Network (BBN, 11/13/2023 Lineup) Bus Route Changes, Pt 1 and Pt 2	16-17
Metrobus Average Weekday Boardings by Route	18-20
Metrobus Average Saturday Boardings by Route	21-22
Metrobus Average Sunday Boardings by Route	23-24
Metrobus Monthly Total Boardings by Route	25-27
Bus Ridership by Route Service Type Lineups Comparison (month-over-month & month-over-16 months)	28-31
Bus Routes as Ranked by Percentage of Average Weekday Ridership	32
Metrobus Cumulative Percentage Average Weekday Ridership Share by Route (Top 75%)	33
Metrobus Estimated Weekday Ridership since 02/01/20 (two-week moving averages)	34
Total Monthly and Average Weekday Bus Ridership – Year over Year Comparison Charts	35
Bus “Top 10 / Bottom 10” Bus Routes Average Weekday Ridership Performance – Month-over-Month Comparisons	36
Bus “Top 10 / Bottom 10” Bus Routes Sets Average Weekday Ridership Performance – Year-over-Year Comparisons	37
Bus “Top 10 / Bottom 10” Bus Routes Sets Average Weekday Ridership Performance – Month-over-16 Month Comparisons	38
Daily Metrobus Ridership since 2/1/20	39
Metrobus Parking Patronage Summary	40

## Table of Contents (continued)

<b>Metrorail</b>	<b>41</b>
Metrorail Average Weekday Boardings by Station	42
Metrorail Average Saturday Boardings by Station	43
Metrorail Average Sunday Boardings by Station	44
Metrorail Total Monthly Boardings by Station	45
Metrorail Cumulative Percentage Average Weekday Ridership Share	46
Metrorail Weekday Ridership since 02/01/20 (two-week moving averages)	47
Total Monthly and Average Weekday Rail Ridership – Year over Year Comparison Charts	48
“Top 5 / Bottom 5” Stations Average Weekday Ridership Performance	49
Daily Metrorail Ridership since 2/1/20	50
Metrorail Parking Patronage Summary	51
<b>Metromover</b>	<b>52</b>
Monthly and Average Daily Mover Boardings by Station	53
Metromover Cumulative Percentage Average Weekday Ridership Share	54
Total Monthly and Average Weekday Mover Ridership – Year over Year Comparison Charts	55
“Top 5 / Bottom 5” Stations Average Weekday Ridership Performance	56
Daily Metromover Ridership since 2/1/20	57
<b>Special Transportation Services (STS)</b>	<b>58</b>
STS Monthly and Average Daily Boardings	59
Total Monthly and Average Weekday STS Ridership – Year over Year Comparison Charts	60
Daily STS Ridership since 2/1/20	61
<b>Ridership Seasonality</b>	<b>62</b>
Ridership Seasonality – Average Weekend Ridership by Month and Fiscal Year for Metrobus	63
Ridership Seasonality – Average Weekend Ridership by Month and Fiscal Year for Metrorail	64
Ridership Seasonality – Percent Share of Total Ridership by Month and Calendar Year for Each Mode	65
Ridership Volatility – Month-to-Month Average Weekday Ridership Percentage Changes for Metrobus and Metrorail	66

## All Modes Overview



**TOTAL MONTHLY WEEKDAY, SATURDAY AND SUNDAY BOARDINGS BY MODE**  
**February 2025**

<b>TRAVEL MODE</b>	<b>MONTH'S TOTAL WEEKDAYS RIDERSHIP</b>	<b>MONTH'S TOTAL SATURDAYS RIDERSHIP</b>	<b>MONTH'S TOTAL SUNDAYS RIDERSHIP</b>	<b>TOTAL MONTHLY RIDERSHIP</b>	<b>% CHANGE vs Feb-24 TOTAL MONTH RIDERSHIP</b>
<b>METROBUS (1)</b>	3,873,542	489,951	352,455	4,715,948	-6.7%
<b>METRORAIL (2)</b>	1,064,939	88,881	73,362	1,227,182	-1.1%
<b>METROMOVER</b>	402,634	53,288	70,276	526,198	-7.7%
<b>STS PARATRANSIT (3)</b>	110,243	9,974	8,508	128,725	2.4%
<b>TOTAL</b>	<b>5,451,358</b>	<b>642,094</b>	<b>504,601</b>	<b>6,598,053</b>	<b>-5.6%</b>

- (1) Metrobus ridership reporting through automatic passenger counters coupled with a new enhanced sensor system resumed on October 1, 2022.
- (2) Metrorail fares resumed on June 1, 2021, following a 14-month period of fare-free rides as a result of the SARS-CoV-2 pandemic. The NextFare System faregate data replaced the video data as Rail ridership data of record starting on that date, until free fares were reinstated for the Better Bus Network launch on 11/13/23. The NextFare System Rail faregate data collection and reporting resumed on New Year's Day 2024.
- (3) Paratransit (STS) ridership data as reported by the contractor and subsequently audited by the Department.

**AVERAGE WEEKDAY, SATURDAY AND SUNDAY BOARDINGS BY MODE**  
**February 2025**

<b>Travel Mode</b>	<b>Average Weekday</b>	<b>Average Saturday</b>	<b>Average Sunday</b>	<b>% Change vs. Feb-24 Weekday</b>	<b>% Change vs. Feb-24 Saturday</b>	<b>% Change vs. Feb-24 Sunday</b>
<b>METROBUS</b>	193,763	122,488	88,114	-2.8%	-7.9%	4.0%
<b>METRORAIL</b>	54,087	22,220	18,341	2.5%	1.0%	20.3%
<b>METROMOVER</b>	21,943	14,541	19,665	-5.7%	-9.6%	28.9%
<b>STS PARATRANSIT</b>	5,512	2,494	2,127	6.4%	4.8%	14.6%
<b>Totals</b>	<b>275,305</b>	<b>161,742</b>	<b>128,247</b>	<b>-1.8%</b>	<b>-6.7%</b>	<b>9.6%</b>

(\*) Average ridership is calculated and published only for those days and stations or routes with nontrivial amounts of reported data.

## METROBUS TOTAL MONTHLY RIDERSHIP COMPARISONS BY FISCAL YEAR

<b>Bus</b>								Variance	Variance	Variance	Variance	Variance	Variance	Variance
<b>Month</b>	<b>FY 19</b>	<b>FY 20</b>	<b>FY 21</b>	<b>FY 22</b>	<b>FY 23</b>	<b>FY 24</b>	<b>FY 25</b>	<b>19 to 20 (*)</b>	<b>20 to 21 (*)</b>	<b>21 to 22</b>	<b>22 to 23 (**)</b>	<b>23 to 24</b>	<b>24 to 25</b>	<b>19 TO 25</b>
<b>Oct</b>	4,554,886	4,507,012	2,805,139	3,081,157	4,679,725	4,912,151	5,043,329	-1.1%	-37.8%	9.8%	51.9%	5.0%	2.7%	10.7%
<b>Nov</b>	4,245,535	4,197,225	2,651,290	3,056,726	4,549,666	5,135,172	4,835,529	-1.1%	-36.8%	15.3%	48.8%	12.9%	-5.8%	13.9%
<b>Dec</b>	4,081,581	4,126,990	3,022,530	3,123,883	4,677,460	5,857,057	4,773,057	1.1%	-26.8%	3.4%	49.7%	25.2%	-18.5%	16.9%
<b>Jan</b>	4,195,911	4,316,998	3,082,746	3,029,055	4,785,128	5,103,257	4,973,281	2.9%	-28.6%	-1.7%	58.0%	6.6%	-2.5%	18.5%
<b>Feb</b>	3,994,019	4,123,083	3,076,966	2,995,789	4,526,317	5,053,665	4,715,948	3.2%	-25.4%	-2.6%	51.1%	11.7%	-6.7%	18.1%
<b>Mar</b>	4,266,768	3,136,162	3,660,639	3,218,562	5,183,872	5,461,317		-26.5%	16.7%	-12.1%	61.1%	5.4%		
<b>Apr</b>	4,291,135	1,544,316	3,625,048	3,105,797	4,618,302	5,548,614		-64.0%	134.7%	-14.3%	48.7%	20.1%		
<b>May</b>	4,330,922	1,734,609	3,683,343	3,097,574	4,953,197	5,308,711		-59.9%	112.3%	-15.9%	59.9%	7.2%		
<b>Jun</b>	3,823,863	2,210,725	2,672,570	3,064,059	4,545,050	4,805,039		-42.2%	20.9%	14.6%	48.3%	5.7%		
<b>Jul</b>	4,094,906	2,366,749	2,769,907	3,189,994	4,484,458	5,230,894		-42.2%	17.0%	15.2%	40.6%	16.6%		
<b>Aug</b>	4,109,613	2,422,014	2,843,552	3,442,006	4,756,063	5,051,346		-41.1%	17.4%	21.0%	38.2%	6.2%		
<b>Sep</b>	3,971,220	2,546,923	2,877,110	3,123,572	4,525,426	4,860,066		-35.9%	13.0%	8.6%	44.9%	7.4%		
<b>FY Total</b>	<b>49,960,359</b>	<b>37,232,806</b>	<b>36,770,840</b>	<b>37,528,174</b>	<b>56,284,664</b>	<b>62,327,289</b>		<b>-25.5%</b>	<b>-1.2%</b>	<b>2.1%</b>	<b>50.0%</b>	<b>10.7%</b>		

(\*) The severe losses in ridership beginning in March 2020 are due to the SARS-CoV-2 pandemic, followed by an overall gradual recovery beginning in March 2021.

(\*\*) The consistently very high increases seen at the start of FY 23 are largely due to the 10/01/2022 switchover from fareboxes to Automatic Passenger Counters in estimating ridership on the directly operated (non-contracted) bus routes.

## METRORAIL TOTAL MONTHLY RIDERSHIP COMPARISONS BY FISCAL YEAR

<b>Rail</b>								Variance	Variance	Variance	Variance	Variance	Variance	Variance
<b>Month</b>	<b>FY 19</b>	<b>FY 20</b>	<b>FY 21</b>	<b>FY 22</b>	<b>FY 23</b>	<b>FY 24</b>	<b>FY 25</b>	<b>19 to 20 (*)</b>	<b>20 to 21 (*)</b>	<b>21 to 22</b>	<b>22 to 23</b>	<b>23 to 24</b>	<b>24 to 25</b>	<b>19 TO 25</b>
<b>Oct</b>	1,757,225	1,643,166	769,525	844,383	1,053,191	1,237,096	1,321,113	-6.5%	-53.2%	9.7%	24.7%	17.5%	6.8%	-24.8%
<b>Nov</b>	1,656,929	1,469,448	699,492	850,881	1,055,066	935,121	1,220,720	-11.3%	-52.4%	21.6%	24.0%	-11.4%	30.5%	-26.3%
<b>Dec</b>	1,553,804	1,433,928	769,194	860,436	1,063,096	1,177,272	1,202,284	-7.7%	-46.4%	11.9%	23.6%	10.7%	2.1%	-22.6%
<b>Jan</b>	1,708,695	1,576,340	799,119	832,924	1,127,340	1,233,350	1,273,616	-7.7%	-49.3%	4.2%	35.3%	9.4%	3.3%	-25.5%
<b>Feb</b>	1,501,458	1,549,118	730,792	905,162	1,072,791	1,240,316	1,227,182	3.2%	-52.8%	23.9%	18.5%	15.6%	-1.1%	-18.3%
<b>Mar</b>	1,554,851	1,027,319	917,097	1,084,978	1,239,336	1,302,854		-33.9%	-10.7%	18.3%	14.2%	5.1%		
<b>Apr</b>	1,559,446	287,803	827,414	1,027,139	1,087,816	1,336,511		-81.5%	187.5%	24.1%	5.9%	22.9%		
<b>May</b>	1,531,597	337,696	887,111	1,023,322	1,151,819	1,314,112		-78.0%	162.7%	15.4%	12.6%	14.1%		
<b>Jun</b>	1,359,966	608,758	723,469	975,477	1,066,861	1,092,060		-55.2%	18.8%	34.8%	9.4%	2.4%		
<b>Jul</b>	1,419,158	632,964	722,159	953,331	1,022,937	1,159,375		-55.4%	14.1%	32.0%	7.3%	13.3%		
<b>Aug</b>	1,463,646	641,275	749,578	1,076,490	1,174,138	1,247,019		-56.2%	16.9%	43.6%	9.1%	6.2%		
<b>Sep</b>	1,427,726	654,244	795,749	1,012,331	1,146,864	1,240,457		-54.2%	21.6%	27.2%	13.3%	8.2%		
<b>FY Total</b>	<b>18,494,501</b>	<b>11,862,059</b>	<b>9,390,699</b>	<b>11,446,854</b>	<b>13,261,255</b>	<b>14,515,543</b>		<b>-35.9%</b>	<b>-20.8%</b>	<b>21.9%</b>	<b>15.9%</b>	<b>9.5%</b>		

(\*) The severe losses in ridership beginning in March 2020 are due to the SARS-CoV-2 pandemic, followed by an overall gradual recovery beginning in April 2021.



## METROMOVER TOTAL MONTHLY RIDERSHIP COMPARISONS BY FISCAL YEAR

<b>Mover</b>								Variance	Variance	Variance	Variance	Variance	Variance	Variance
<b>Month</b>	<b>FY 19</b>	<b>FY 20</b>	<b>FY 21</b>	<b>FY 22</b>	<b>FY 23</b>	<b>FY 24</b>	<b>FY 25</b>	<b>19 to 20 (*)</b>	<b>20 to 21 (*)</b>	<b>21 to 22</b>	<b>22 to 23</b>	<b>23 to 24</b>	<b>24 to 25</b>	<b>19 TO 25</b>
<b>Oct</b>	790,533	831,234	250,044	389,065	514,308	614,479	550,054	5.1%	-69.9%	55.6%	32.2%	19.5%	-10.5%	-30.4%
<b>Nov</b>	735,198	799,632	232,422	418,929	439,150	584,887	561,326	8.8%	-70.9%	80.2%	4.8%	33.2%	-4.0%	-23.6%
<b>Dec</b>	767,239	849,832	251,019	450,320	426,073	616,455	634,296	10.8%	-70.5%	79.4%	-5.4%	44.7%	2.9%	-17.3%
<b>Jan</b>	746,728	847,773	255,968	451,566	498,566	644,639	571,831	13.5%	-69.8%	76.4%	10.4%	29.3%	-11.3%	-23.4%
<b>Feb</b>	675,160	855,398	260,332	465,968	459,264	570,242	526,198	26.7%	-69.6%	79.0%	-1.4%	24.2%	-7.7%	-22.1%
<b>Mar</b>	737,814	441,200	302,502	535,857	558,396	753,107		-40.2%	-31.4%	77.1%	4.2%	34.9%		
<b>Apr</b>	795,696	130,549	310,772	495,982	565,943	640,281		-83.6%	138.1%	59.6%	14.1%	13.1%		
<b>May</b>	734,645	146,454	292,922	455,120	547,948	597,232		-80.1%	100.0%	55.4%	20.4%	9.0%		
<b>Jun</b>	701,318	203,637	286,145	477,286	632,423	559,913		-71.0%	40.5%	66.8%	32.5%	-11.5%		
<b>Jul</b>	739,814	210,596	368,847	512,094	635,954	610,437		-71.5%	75.1%	38.8%	24.2%	-4.0%		
<b>Aug</b>	739,785	205,995	344,319	508,359	657,267	597,361		-72.2%	67.1%	47.6%	29.3%	-9.1%		
<b>Sep</b>	699,879	219,696	331,915	305,185	610,810	527,660		-68.6%	51.1%	-8.1%	100.1%	-13.6%		
<b>FY Total</b>	<b>8,863,809</b>	<b>5,741,996</b>	<b>3,487,207</b>	<b>5,465,731</b>	<b>6,546,102</b>	<b>7,316,693</b>		<b>-35.2%</b>	<b>-39.3%</b>	<b>56.7%</b>	<b>19.8%</b>	<b>11.8%</b>		

(\*) The severe losses in ridership beginning in March 2020 are due to the SARS-CoV-2 pandemic, followed by an overall gradual recovery beginning in April 2021.

## SPECIAL TRANSPORTATION SERVICES (STS) TOTAL MONTHLY RIDERSHIP COMPARISONS BY FISCAL YEAR

<b>STS</b>								Variance	Variance	Variance	Variance	Variance	Variance	Variance
<b>Month</b>	<b>FY 19</b>	<b>FY 20</b>	<b>FY 21</b>	<b>FY 22</b>	<b>FY 23</b>	<b>FY 24</b>	<b>FY 25</b>	<b>19 to 20 (*)</b>	<b>20 to 21 (*)</b>	<b>21 to 22</b>	<b>22 to 23</b>	<b>23 to 24</b>	<b>24 to 25</b>	<b>19 to 25</b>
<b>Oct</b>	162,564	162,704	97,388	115,122	122,189	130,958	134,852	0.1%	-40.1%	18.2%	6.1%	7.2%	3.0%	-17.0%
<b>Nov</b>	145,653	144,366	89,387	110,289	111,578	127,025	127,979	-0.9%	-38.1%	23.4%	1.2%	13.8%	0.8%	-12.1%
<b>Dec</b>	136,110	138,642	96,366	104,496	112,019	130,093	125,724	1.9%	-30.5%	8.4%	7.2%	16.1%	-3.4%	-7.6%
<b>Jan</b>	146,268	149,114	97,928	97,541	112,632	125,513	130,857	1.9%	-34.3%	-0.4%	15.5%	11.4%	4.3%	-10.5%
<b>Feb</b>	141,396	144,392	98,285	105,706	111,748	125,732	128,725	2.1%	-31.9%	7.6%	5.7%	12.5%	2.4%	-9.0%
<b>Mar</b>	153,191	89,634	112,930	120,718	126,819	130,203		-41.5%	26.0%	6.9%	5.1%	2.7%		
<b>Apr</b>	155,808	26,877	120,122	114,912	116,882	134,677		-82.7%	346.9%	-4.3%	1.7%	15.2%		
<b>May</b>	158,665	39,654	118,636	114,505	127,782	137,958		-75.0%	199.2%	-3.5%	11.6%	8.0%		
<b>Jun</b>	141,320	59,093	112,397	109,054	119,527	118,860		-58.2%	90.2%	-3.0%	9.6%	-0.6%		
<b>Jul</b>	148,232	61,765	110,059	107,188	113,623	126,391		-58.3%	78.2%	-2.6%	6.0%	11.2%		
<b>Aug</b>	147,331	66,563	110,766	117,941	125,510	132,503		-54.8%	66.4%	6.5%	6.4%	5.6%		
<b>Sep</b>	141,387	80,346	115,406	108,788	122,065	130,244		-43.2%	43.6%	-5.7%	12.2%	6.7%		
<b>FY Total</b>	<b>1,777,925</b>	<b>1,163,150</b>	<b>1,279,670</b>	<b>1,326,260</b>	<b>1,422,374</b>	<b>1,550,157</b>		<b>-34.6%</b>	<b>10.0%</b>	<b>3.6%</b>	<b>7.2%</b>	<b>9.0%</b>		

(\*) The severe losses in ridership beginning in March 2020 are due to the SARS-CoV-2 pandemic, followed by an overall gradual recovery beginning in April 2021.

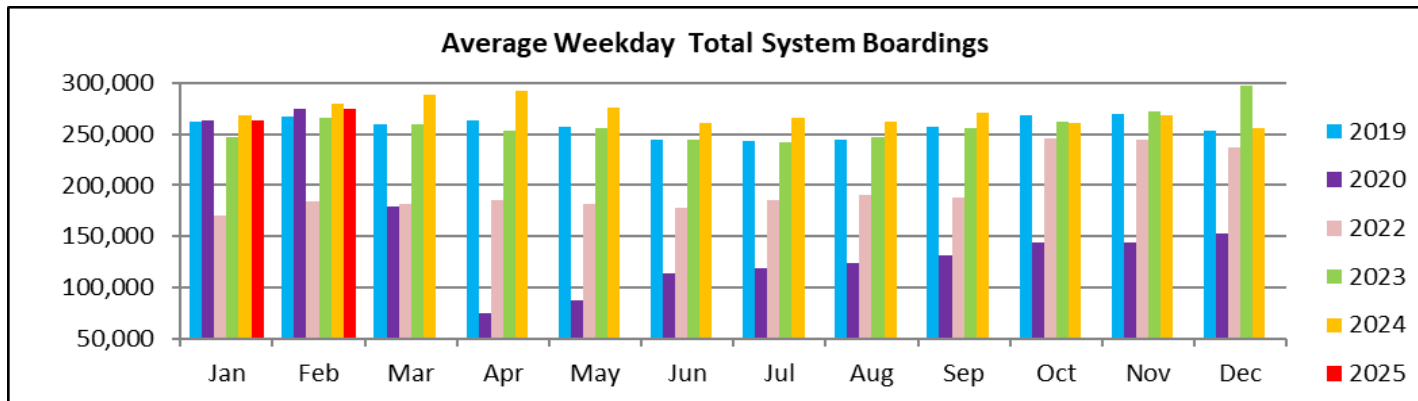
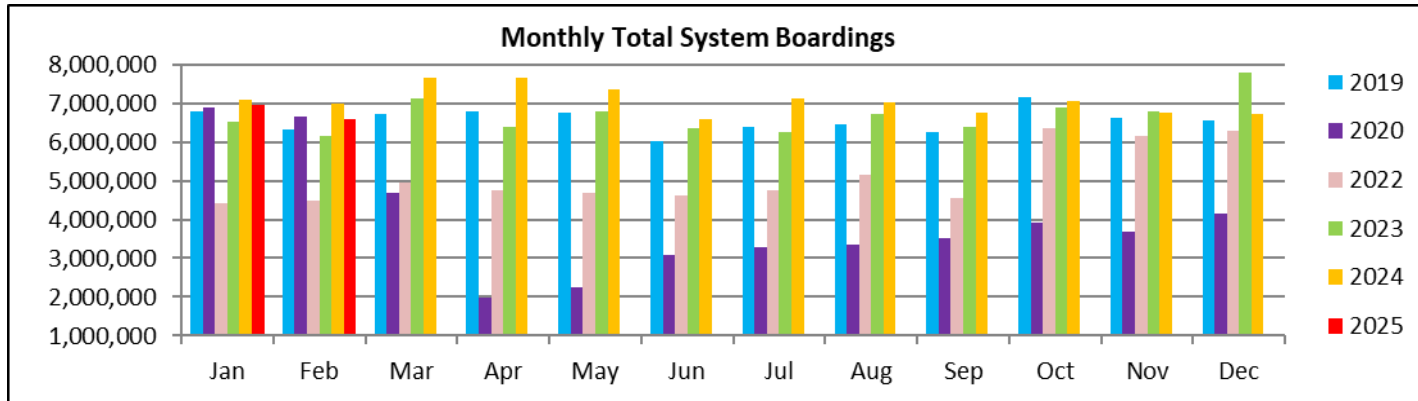
## ALL-MODES COMBINED TOTAL MONTHLY RIDERSHIP COMPARISONS BY FISCAL YEAR

All Modes								Variance (*)	Variance (*)	Variance	Variance (**)	Variance	Variance	Variance
Month	FY 19	FY 20	FY 21	FY 22	FY 23	FY 24	FY 25	19 TO 20	20 TO 21	21 TO 22	22 TO 23	23 TO 24	24 TO 25	19 TO 25
Oct	7,265,208	7,144,116	3,922,096	4,429,727	6,369,413	6,894,684	7,049,348	-1.7%	-45.1%	12.9%	43.8%	8.2%	2.2%	-3.0%
Nov	6,783,315	6,610,671	3,672,591	4,436,825	6,155,460	6,782,205	6,745,554	-2.5%	-44.4%	20.8%	38.7%	10.2%	-0.5%	-0.6%
Dec	6,538,734	6,549,392	4,139,109	4,539,135	6,278,648	7,780,877	6,735,361	0.2%	-36.8%	9.7%	38.3%	23.9%	-13.4%	3.0%
Jan	6,797,602	6,890,225	4,235,761	4,411,086	6,523,666	7,106,759	6,949,585	1.4%	-38.5%	4.1%	47.9%	8.9%	-2.2%	2.2%
Feb	6,312,033	6,671,991	4,166,375	4,472,625	6,170,120	6,989,955	6,598,053	5.7%	-37.6%	7.4%	38.0%	13.3%	-5.6%	4.5%
Mar	6,712,624	4,694,315	4,993,168	4,960,115	7,108,423	7,647,481		-30.1%	6.4%	-0.7%	43.3%	7.6%		
Apr	6,802,085	1,989,545	4,883,356	4,743,830	6,388,943	7,660,083		-70.8%	145.5%	-2.9%	34.7%	19.9%		
May	6,755,829	2,258,413	4,982,012	4,690,521	6,780,746	7,358,013		-66.6%	120.6%	-5.9%	44.6%	8.5%		
Jun	6,026,467	3,082,213	3,794,581	4,625,876	6,363,861	6,575,872		-48.9%	23.1%	21.9%	37.6%	3.3%		
Jul	6,402,110	3,272,074	3,970,972	4,762,607	6,256,972	7,127,097		-48.9%	21.4%	19.9%	31.4%	13.9%		
Aug	6,460,375	3,335,847	4,048,215	5,144,796	6,712,978	7,028,229		-48.4%	21.4%	27.1%	30.5%	4.7%		
Sep	6,240,212	3,501,209	4,120,180	4,549,876	6,405,165	6,758,427		-43.9%	17.7%	10.4%	40.8%	5.5%		
FY Total	79,096,594	56,000,011	50,928,416	55,767,019	77,514,395	85,709,682		-29.2%	-9.1%	9.5%	39.0%	10.6%		

(\*) The severe losses in ridership beginning in March 2020 are due to the SARS-CoV-2 pandemic, followed by an overall gradual recovery beginning in March 2021.

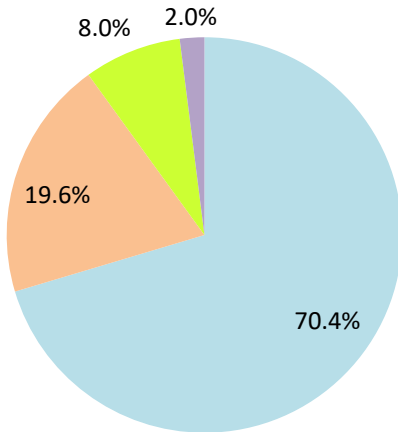
(\*\*) The consistently very high increases seen at the start of FY 23 are largely due to the 10/01/2022 switchover from fareboxes to Automatic Passenger Counters in estimating ridership on the directly operated (non-contracted) bus routes.

# **TOTAL MONTHLY AND AVERAGE WEEKDAY RIDERSHIP YEAR OVER YEAR COMPARISON CHARTS – ALL MODES COMBINED**



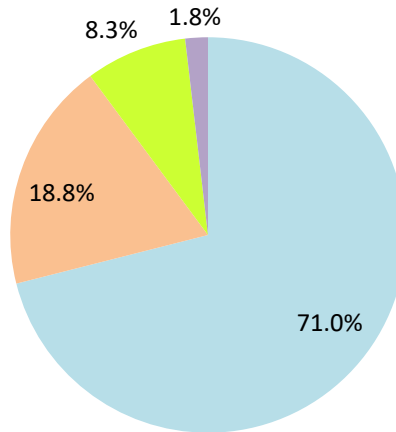
## AVERAGE WEEKDAY RIDERSHIP - MODAL SPLITS

February 2025



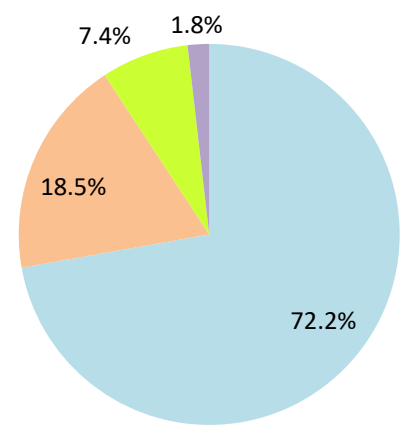
boardings

February 2024



boardings

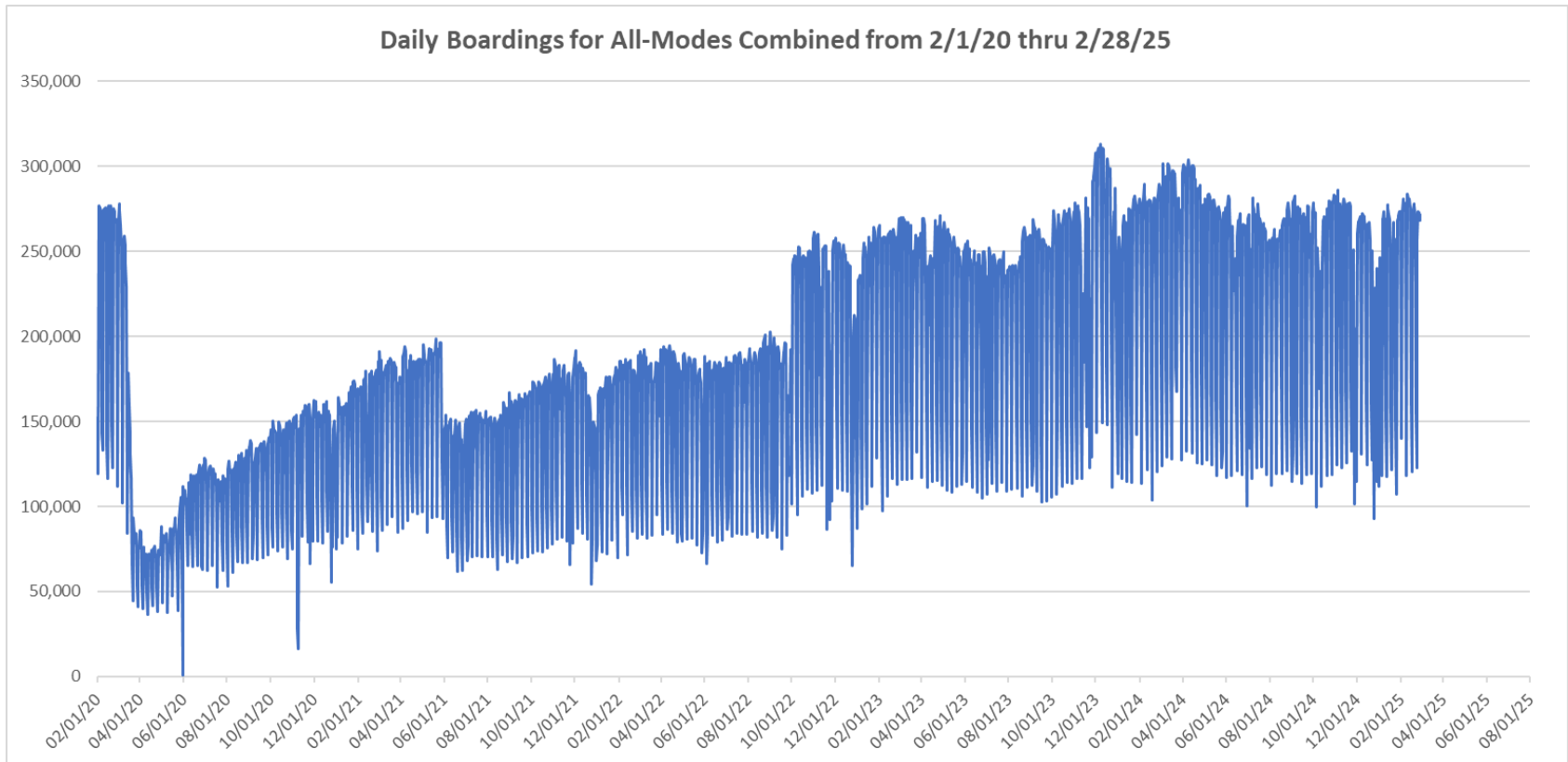
February 2023



boardings



## DAILY RIDERSHIP FOR ALL MODES COMBINED SINCE FEBRUARY 1, 2020



- (1) There was no Metrobus, Metrorail and Metromover service on 5/31/20, as a safety precaution, and no service for any of the four modes on 9/28/22 as a result of Hurricane Ian..
- (2) The dip at the start of the second week of Nov-20 is due to Hurricane Eta.
- (3) Daily variations from Oct-22 onward are, for the Bus portion, a representation estimated from reports made available by the Bus APC data vendor and finalized sampling for each month.
- (4) The reduction seen beginning 6/1/21 is partly due to the resumption of fares for bus and rail, and partly the result of having resumed reporting Cubic farebox data rather than bus APC counts, as well as Cubic rail faregate counts instead of video camera counts on that date. The jump seen at the start of Oct-22 is due to the switch to APC bus ridership counts reporting begun on 10/1/22.
- (5) The pronounced peak in Dec-23 is attributable to the Better Bus Network launch period and attendant free fares.
- (6) Periodic (weekly) variations are prominent, since weekday ridership is almost always significantly higher than weekend or holiday ridership.

## Metrobus



# Better Bus Network (BBN, 11/13/2023 lineup) Bus Route Changes (Pt 1)

The listings below and on the following page are to serve as an aid in identifying individual routes for comparison of ridership data between periods prior to and following the launch of the BBN on 11/13/2023. In Nov-23, both old and new route numbers appear in data tables, since the launch took place near mid-month; beginning with Dec-23, only the current (BBN) numbering system appear in tables, to conveniently allow for direct comparisons.

## BBN Route Numbering Changes:

Contracted **Route 1** was renumbered **Route 97**

Directly operated **Route 33** was renumbered **Route 103** (new, recycled number, not the same as former **Route 103 - C**)

Directly operated **Route 51** (Flagler MAX) was renumbered **Route 211** (recycled number, not the same as the OVERTOWN CIRCULATOR)

Contracted **Route 71** was renumbered **Route 107** (new, recycled number, not the same as **Route 107 - G** further below) and became directly operated

Directly operated **Route 79** was renumbered **Route 279** (79th Steet MAX)

Directly operated **Route 93** was renumbered **Route 203** (Biscayne MAX)

Directly operated **Route 99** was renumbered **Route 199**

Contracted **Route 101 - A** was renumbered **Route 15**

Directly operated **Route 102 - B** was renumbered **Route 26** (under the BBN's first phase, 07/24/2023 lineup)

Directly operated **Route 107 - G** (old, not the same as the **Route 107** appearing above) was renumbered **Route 125**

Directly operated **Route 112 - L** was renumbered **Route 79** (recycled number, not the same as the **Route 79** appearing above)

Directly operated **Route 120** was renumbered **Route 100**

Directly operated **Route 200** (CUTLER BAY LOCAL) was renumbered **Route 500** (recycled number, not the same as the **Route 500** further below)

Contracted **Route 210** was renumbered **Route 510** (SKYLAKE CIRCULATOR)

Contracted **Route 246** was renumbered **Route 401** (NORTH OWL)

Contracted **Route 248** (Princeton Circulator) was renumbered **Route 70** (recycled number, not the same as former **Route 70**)

Directly operated **Route 252** became contractor-operated, under the new name and number **Route 152**

Directly operated **Route 500** was renumbered **Route 400** (SOUTH OWL)

Coming soon, per UTA on 2/18/25: **Route 38** will be renumbered **Route 602**

*The above routes, along with many others who retained their numbering, underwent modifications in various ways (realignment, new headways, days of operation, etc., some major), as part of the BBN design and its resulting lineup. Details for each DTPW Bus route are provided in the Miami-Dade County website. (Directly operated **Route 2** became contractor-operated but kept its number).*



# Better Bus Network (BBN, 11/13/2023 et seq. lineups) Bus Route Changes (Pt 2)

## BBN New Routes:

Two new routes with new numbering, and later two new routes with recycled numbers were created to support the Better Bus Network:

Route 14 corresponds to a newly created route

Route 57 (recycled number) corresponds to a newly created route

Route 20 corresponds to a newly created route

Route 101 (recycled number, not the same as old Route 101 A, now

Route 15) corresponds to a newly created route

## BBN Eliminated Routes:

The following routes were discontinued, as part of the Better Bus Network realignments:

Route 10

Route 105 - E

Route 212 (SWEETWATER CIRCULATOR)

Route 16

Route 108 - H

Route 217 (BUNCHE PARK CIRCULATOR)

Route 19

Route 110 - J

Route 238 (EAST-WEST CONNECTION)

Route 29

Route 113 - M

Route 241 (TUTTLE LIMITED)

Route 31 (BUSWAY LOCAL)

Route 115

Route 254 (BROWNSVILLE CIRCULATOR)

Route 42

Route 119 - S

Route 267 (LUDLAM LIMITED)

Route 46 (LIBERTY CITY CONNECTION)

Route 155 (BISCAYNE GARDENS CIRCULATOR)

Route 277 (7th AVENUE MAX)

Route 57

Route 202 (LITTLE HAITI CONNECTION)

Route 286 (NORTH POINTE CIRCULATOR)

Route 82 (WESTCHESTER CIRCULATOR)

Route 297 (27th AVENUE ORANGE MAX)

Route 103 - C (old, previously used numbering, not the same as the Route 103 in the list on the previous page)

Route 211 (OVERTOWN CIRCULATOR, previously used numbering, not the same as the Route 211 in the list on the previous page)

## Previously Eliminated Routes:

The following five express routes were suspended soon after the start of the SARS-CoV-2 pandemic, and never reinstated; their ridership appears in some of the tables in this report, as then-components of the reported bus system performance metrics:

Route 175 (NW MIAMI-DADE EXPRESS)

Route 195 EXPRESS – BROWARD BLVD

Route 196 EXPRESS – BROWARD BLVD-CIVIC CENTER

Route 295 EXPRESS – SHERIDAN STREET

Route 296 EXPRESS – SHERIDAN STREET-CIVIC CENTER

*The preceding listings are not exhaustive, and the reader is referred to the Miami-Dade County website for further BBN details or additional changes.*

*Six new MetroLink routes began running in July and August 2024 as a complement to the BBN; one (Alton Rd) is now the New Route 101 (different from old Route 101 / A).*

## METROBUS AVERAGE WEEKDAY BOARDINGS BY ROUTE (†)

Route	Average Weekday	Average Weekday	Percent Change	Average Weekday	Percent Change	Average Weekday	Percent Change	Average Weekday	Percent Change
<b>weekdays</b>	Feb-25	Jan-25	MOM	Oct-23	MO16M	Feb-24	YOY	Feb-20	Current vs Feb-20
2	2,422	2,238	8.2%	2,977	-18.6%	2,018	20.0%	3,102	-21.9%
3	7,783	7,828	-0.6%	5,416	43.7%	8,981	-13.3%	5,137	51.5%
7	3,571	3,564	0.2%	4,021	-11.2%	4,248	-15.9%	3,501	2.0%
8	5,021	4,609	8.9%	4,650	8.0%	4,979	0.8%	3,909	28.5%
9	10,912	10,768	1.3%	6,490	68.1%	11,460	-4.8%	5,528	97.4%
10				2,443		0		2,482	
11	11,795	10,829	8.9%	9,621	22.6%	11,491	2.7%	7,292	61.8%
12	2,882	2,639	9.2%	2,891	-0.3%	2,977	-3.2%	2,779	3.7%
14	1,136	1,027	10.6%			975	16.5%		
15	663	583	13.9%	178	273.6%	425	56.2%	177	275.0%
16				2,009		0		1,862	
17	6,674	6,806	-1.9%	4,133	61.5%	7,233	-7.7%	3,878	72.1%
19				1,807		0		1,542	
20	2,418	2,334	3.6%			3,861	-37.4%		
21	1,847	1,737	6.3%	2,107	-12.3%	2,007	-8.0%	1,817	1.7%
22	2,329	2,402	-3.0%	4,502	-48.3%	2,617	-11.0%	3,640	-36.0%
24-CORAL WAY LIMITED	2,365	2,202	7.4%	2,195	7.7%	2,544	-7.0%	1,340	76.5%
26	2,445	2,337	4.6%	1,877	30.2%	2,556	-4.3%	1,778	37.5%
27	8,672	8,882	-2.4%	7,110	22.0%	9,634	-10.0%	6,972	24.4%
29				516		0		534	
31-BUSWAY LOCAL						0		1,089	
32	2,458	2,312	6.3%	2,699	-8.9%	1,962	25.3%	2,390	2.8%
34 TRANSITWAY EXPRESS	1,876	1,698	10.5%	1,636	14.7%	1,850	1.4%	2,008	-6.6%
35	2,619	2,358	11.1%	3,070	-14.7%	2,435	7.5%	2,421	8.2%
36	6,600	6,263	5.4%	2,645	149.5%	6,222	6.1%	2,536	160.3%
37	4,908	4,569	7.4%	3,475	41.2%	4,728	3.8%	3,273	50.0%
38 TRANSITWAY MAX	6,291	5,894	6.7%	5,714	10.1%	7,402	-15.0%	6,361	-1.1%
39 TRANSITWAY EXPRESS	953	819	16.4%	742	28.3%	869	9.7%	893	6.7%
40	1,770	1,696	4.4%	2,344	-24.5%	1,989	-11.0%	1,772	-0.1%
42				1,001		0		820	
46 - LIBERTY CITY CONN.				22		0		41	
52	1,578	1,467	7.5%	1,390	13.5%	1,706	-7.5%	1,261	25.1%
54	2,865	2,681	6.9%	3,086	-7.1%	2,961	-3.2%	2,940	-2.6%
56	282	260	8.4%	391	-27.9%	609	-53.7%	354	-20.3%
57				522		0		433	
new 57	186	183	1.4%						
62	2,862	2,751	4.0%	2,496	14.7%	2,753	4.0%	1,815	57.6%
70	316	316	0.0%	161	96.0%	315	0.2%	135	134.9%

(†) In this table and those which follow, "YOY" stands for "year-over-year", "MOM" for "month-over-month" and, e.g., "MOZM" for "month over Z months", i.e., current month vs 12 months prior, one month prior, and compared to pre-BBN, respectively. The Feb-20 numbers serve as a pre-pandemic benchmark. To see which routes are fully or partly operated under contract this month, please refer to the ranking table further in the Metrobus portion of this document.

## METROBUS AVERAGE WEEKDAY BOARDINGS BY ROUTE

Route	Average Weekday	Average Weekday	Percent Change	Average Weekday	Percent Change	Average Weekday	Percent Change	Average Weekday	Percent Change
<b>weekdays</b>	Feb-25	Jan-25	MOM	Oct-23	MO16M	Feb-24	YOY	Feb-20	Current vs Feb-20
72	938	867	8.2%	670	40.1%	946	-0.9%	781	20.1%
73	1,388	1,283	8.2%	2,868	-51.6%	1,464	-5.2%	2,124	-34.6%
75	3,111	2,948	5.5%	1,594	95.2%	2,986	4.2%	1,429	117.8%
77	10,575	10,515	0.6%	9,959	6.2%	12,375	-14.5%	7,129	48.3%
79	8,742	8,505	2.8%	8,481	3.1%	8,584	1.8%	7,636	14.5%
82 - WESTCHESTER CIRC				61		0		62	
87	2,152	2,024	6.4%	1,924	11.9%	2,438	-11.7%	1,499	43.5%
88	1,866	1,762	5.9%	2,419	-22.9%	2,041	-8.6%	2,076	-10.1%
95-EXPRESS GOLDEN GLADES	1,513	1,431	5.7%	1,195	26.6%	1,317	14.8%	2,893	-47.7%
97	263	242	8.4%	225	16.9%	185	41.7%	184	42.7%
100	17,408	16,315	6.7%	6,128	184.1%	15,894	9.5%	6,667	161.1%
new 101	782	697	12.1%						
103 - C								463	
103	1,813	1,860	-2.5%	1,967	-7.8%	2,270	-20.1%	1,687	7.5%
104	1,195	1,116	7.1%	1,024	16.7%	1,247	-4.2%	837	42.8%
105 - E				1,402		0		1,287	
107	2,218	2,069	7.2%	825	168.7%	2,263	-2.0%	711	212.1%
108 - H				487		0		473	
110 - J				2,955		0		2,508	
113 - M				887		0		866	
115				151		0		180	
119 - S				9,588		0		8,970	
125	4,655	4,987	-6.7%	2,099	121.8%	4,669	-0.3%	1,713	171.7%
132 - TRI-RAIL DORAL SHUTTLE	55	46	18.9%	37	49.1%	49	11.9%	16	249.4%
135	2,027	1,991	1.8%	1,755	15.5%	2,159	-6.1%	1,399	44.9%
136	150	142	5.3%	162	-7.4%	178	-16.2%	126	18.6%
137-WEST DADE CONNECTION	2,525	2,253	12.1%	2,119	19.2%	2,504	0.9%	1,626	55.3%
150-MIAMI BEACH AIRPORT EXPRESS	1,559	1,473	5.8%	2,149	-27.5%	1,549	0.7%	1,867	-16.5%
152	348	364	-4.5%	1,051	-66.9%	402	-13.5%	851	-59.1%
155 - BISCAYNE GARDENS CIRC				45		0		44	
175 - NW MIAMI-DADE EXPRESS								33	
183	5,168	4,708	9.8%	3,653	41.5%	5,325	-2.9%	3,149	64.1%
199	1,898	1,864	1.8%	1,899	-0.1%	1,959	-3.1%	1,473	28.9%
202 - LITTLE HAITI CONN				110		0		140	
203 - BISCAYNE MAX	1,114	1,125	-1.0%	3,666	-69.6%	1,649	-32.5%	3,334	-66.6%

## METROBUS AVERAGE WEEKDAY BOARDINGS BY ROUTE

Route	Average Weekday	Average Weekday	Percent Change	Average Weekday	Percent Change	Average Weekday	Percent Change	Average Weekday	Percent Change
<b>weekdays</b>	Feb-25	Jan-25	MOM	Oct-23	MO16M	Feb-24	YOY	Feb-20	Current vs Feb-20
204 KILLIAN MAX	591	553	6.9%	620	-4.6%	667	-11.3%	1,071	-44.8%
207 (7th St)-LITTLE HAVANA CONN	1,743	1,557	11.9%	1,819	-4.2%	1,823	-4.4%	1,489	17.0%
208 (8th St)-LITTLE HAVANA CONN	1,688	1,506	12.1%	1,659	1.8%	1,792	-5.8%	1,308	29.1%
211 OVERTOWN CIRCULATOR				71		0		58	
211 - FLAGLER MAX	1,740	1,558	11.7%	3,824	-54.5%	1,985	-12.4%	3,109	-44.0%
212-SWEETWATER CIRC				22		0		15	
217 - BUNCHE PARK CIRC				80		0		97	
238-EAST/WEST CONN				593		0		449	
241 TUTTLE LIMITED				348		0			
254-BROWNSVILLE CIRC				5		0		19	
267-LUDLAM LIMITED				162		0		149	
272 SUNSET MAX (*)	376	365	3.0%	428	-12.2%	374	0.5%	550	-31.7%
277-7TH AVENUE MAX				879		0		683	
279 - 79 STREET MAX	876	815	7.5%	469	86.9%	717	22.2%	361	142.5%
286-NORTH POINTE CIRC				93		0		97	
287-SAGA BAY MAX	335	310	8.1%	341	-1.7%	404	-17.1%	358	-6.5%
288 KENDALL MAX	486	457	6.3%	372	30.7%	531	-8.4%	762	-36.2%
297-27th AVENUE ORANGE MAX				1,229		0		1,356	
301-DADE MONROE EXPRESS	1,441	1,394	3.4%	955	50.9%	1,047	37.7%	841	71.3%
302-CARD SOUND EXPRESS	167	138	21.4%	91	84.5%	106	57.4%	86	93.9%
338 - WEEKEND EXPRESS									
344	156	153	1.8%	76	105.3%	118	31.8%	96	62.1%
400 - SOUTH OWL	85	86	-0.9%	71	19.5%	82	3.4%	81	4.6%
401 - NORTH OWL	67	67	0.5%	61	11.1%	65	4.1%	94	-28.0%
500 - CUTLER BAY LOCAL	173	167	3.4%	176	-1.5%	289	-40.1%	158	9.8%
510 - SKYLAKE CIRCULATOR (*)	365	359	1.6%	471	-22.6%	377	-3.4%	282	29.4%
836 EXPRESS	313	309	1.3%	247	26.7%	335	-6.8%		
837 EXPRESS	236	204	16.0%	195	21.4%	203	16.1%		
MetroLink NoMi West	352	280	25.5%						
MetroLink North Miami	222	218	1.8%						
MetroLink LeJeune	74	69	7.7%						
MetroLink Killian Parkway	175	153	14.1%						
MetroLink Alton Road									
MetroLink Opa-Locka	36	31	18.0%						
AHEPA SHUTTLE	19	18	3.3%	18	7.0%	17	14.5%	21	-8.4%
FEDERATION GARDENS SHUTTLE									
GREEN HILLS SHUTTLE	7	6	13.0%	5	25.0%	8	-21.2%	9	-27.8%
KINGS CREEK SHUTTLE	10	9	13.9%	14	-25.5%	9	13.9%	13	-21.2%
MEEK / MARQUESS SHUTTLE	17	18	-5.6%						
ROBERT SHARP SHUTTLE	31	24	27.1%	23	32.6%	28	8.0%	10	221.1%
SIERRA LAKES SHUTTLE	24	16	46.3%	16	54.8%	25	-4.0%	45	-46.7%
<b>Total</b>	<b>193,763</b>	<b>185,480</b>	<b>4.5%</b>	<b>185,320</b>	<b>4.6%</b>	<b>199,263</b>	<b>-2.8%</b>	<b>167,711</b>	<b>15.5%</b>

(1) Includes shuttles and those routes which were not run some years.

(2) Several express routes were suspended beginning at the end of Mar-20, due to the SARS-CoV-2 pandemic, while other routes had alignment and schedule modifications made to them, in an ongoing effort to optimize service delivery.

February 2025

20

## METROBUS AVERAGE SATURDAY BOARDINGS BY ROUTE

Route	Average Saturday	Average Saturday	Percent Change	Average Saturday	Percent Change	Average Saturday	Percent Change	Average Saturday	Percent Change
Saturdays	Feb-25	Jan-25	MOM	Oct-23	MO16M	Feb-24	YOY	Feb-20	Current vs Feb-20
2	1,199	1,241	-3.4%	1,605	-25.3%	969	23.7%	1,616	-25.8%
3	6,380	6,060	5.3%	5,754	10.9%	6,771	-5.8%	5,229	22.0%
7	1,966	1,905	3.2%	1,972	-0.3%	2,641	-25.6%	1,887	4.2%
8	2,287	2,261	1.2%	2,334	-2.0%	2,777	-17.7%	2,027	12.8%
9	6,893	6,671	3.3%	3,677	87.4%	7,483	-7.9%	3,034	127.2%
10				2,107		0		1,896	
11	8,036	7,915	1.5%	5,787	38.8%	9,703	-17.2%	5,182	55.1%
14	972	820	18.5%			858	13.3%		
15	523	405	29.2%	93	460.9%	348	50.2%	71	638.7%
16				1,662		0		1,566	
17	4,712	4,386	7.4%	2,553	84.6%	4,692	0.4%	2,363	99.4%
20	2,052	2,152	-4.7%			3,165	-35.2%		
22	1,482	1,502	-1.3%	2,425	-38.9%	1,748	-15.2%	2,084	-28.9%
24-CORAL WAY LIMITED	1,630	1,472	10.8%	1,400	16.4%	2,017	-19.2%	1,165	39.9%
26	1,258	1,321	-4.8%	966	30.3%	1,357	-7.3%	851	47.9%
27	5,620	5,120	9.8%	4,006	40.3%	6,768	-17.0%	4,034	39.3%
31-BUSWAY LOCAL				0				896	
32	1,505	1,498	0.4%	1,261	19.3%	1,222	23.1%	1,029	46.2%
35	1,756	1,794	-2.1%	1,540	14.0%	1,742	0.8%	1,372	28.0%
36	4,791	4,582	4.6%	1,677	185.7%	4,904	-2.3%	1,289	271.5%
37	3,007	2,974	1.1%	2,062	45.8%	3,237	-7.1%	2,090	43.8%
38 TRANSITWAY MAX	5,353	5,317	0.7%	6,328	-15.4%	6,217	-13.9%	4,715	13.5%
40	1,100	1,047	5.1%	926	18.8%	1,054	4.4%	655	68.1%
42				617		0		552	
52	999	907	10.1%	694	44.0%	1,125	-11.2%	686	45.6%
54	1,831	1,740	5.3%	1,925	-4.9%	2,000	-8.4%	1,727	6.1%
56	101	102	-0.5%			230	-55.9%		
new 57	61	89	-31.1%						
62	1,898	1,965	-3.4%	1,823	4.1%	1,954	-2.9%	1,343	41.3%
70	218	204	6.6%			172	26.5%		
72	566	536	5.7%	357	58.8%	522	8.5%	350	62.0%
73	574	513	11.9%	1,202	-52.2%	627	-8.5%	860	-33.3%
75	1,986	1,829	8.6%	550	261.0%	1,877	5.8%	468	324.3%
77	6,893	6,699	2.9%	5,510	25.1%	7,588	-9.2%	4,197	64.2%
79	6,497	6,755	-3.8%	7,094	-8.4%	7,280	-10.8%	5,667	14.6%
82 - WESTCHESTER CIRC				38		0		50	

## METROBUS AVERAGE SATURDAY BOARDINGS BY ROUTE

Route	Average Saturday	Average Saturday	Percent Change	Average Saturday	Percent Change	Average Saturday	Percent Change	Average Saturday	Percent Change
<b>Saturdays</b>	<b>Feb-25</b>	<b>Jan-25</b>	<b>MOM</b>	<b>Oct-23</b>	<b>MO16M</b>	<b>Feb-24</b>	<b>YOY</b>	<b>Feb-20</b>	<b>Current vs Feb-20</b>
87	928	962	-3.6%	532	74.5%	991	-6.4%	402	130.5%
88	1,507	1,519	-0.8%	1,661	-9.3%	1,580	-4.7%	1,620	-7.0%
97	187	166	12.5%	163	14.2%	184	1.5%	215	-13.3%
100	14,458	13,967	3.5%	5,637	156.5%	14,680	-1.5%	4,744	204.8%
103 - C								315	
103	1,111	1,114	-0.2%	1,239	-10.3%	1,395	-20.4%	951	16.9%
104	823	776	6.1%	445	85.2%	817	0.8%	468	75.7%
105 - E				772		0		619	
107	1,182	1,161	1.8%	238	397.8%	1,402	-15.7%	252	369.5%
108 - H				401		0		372	
110 - J				1,394		0		1,952	
113 - M				577		0		503	
115				80		0		82	
119 - S				8,118		0		6,861	
125	2,752	2,727	0.9%	1,297	112.2%	2,792	-1.4%	1,066	158.1%
135	987	921	7.2%	556	77.6%	972	1.6%	539	83.3%
137-WEST DADE CONNECTION	1,561	1,430	9.2%	1,337	16.8%	1,658	-5.9%	1,027	51.9%
150-MIAMI BEACH AIRPORT EXPRESS	1,510	1,336	13.0%	2,161	-30.1%	1,536	-1.7%	1,604	-5.8%
152	236	209	13.2%	375	-37.0%	243	-2.9%	302	-21.9%
183	2,960	2,881	2.8%	1,960	51.1%	3,189	-7.2%	1,790	65.4%
195 EXPRESS - BROWARD BLVD									
196 EXPRESS - SHERIDAN ST									
199	1,242	1,302	-4.6%	1,106	12.3%	1,364	-9.0%	849	46.3%
202 - LITTLE HAITI CONN				22		0		50	
207 (7th St)-LITTLE HAVANA CONN	853	772	10.5%	929	-8.1%	999	-14.6%	1,032	-17.4%
208 (8th St)-LITTLE HAVANA CONN	989	811	21.9%	1,030	-4.0%	1,013	-2.3%	1,044	-5.3%
241 TUTTLE LIMITED				222		0			
286-NORTH POINTE CIRC				61		0		41	
295									
296									
301-DADE MONROE EXPRESS	1,454	1,461	-0.4%	885	64.3%	967	50.5%	801	81.6%
302-CARD SOUND EXPRESS	166	136	22.2%	94	76.9%	102	63.8%	57	193.7%
338 - WEEKEND EXPRESS	179	162	10.5%	259	-30.9%	165	8.5%	237	-24.2%
344	116	86	35.6%			68	72.2%		
400 - SOUTH OWL	94	115	-18.7%	104	-9.9%	87	7.8%	70	33.6%
401 - NORTH OWL	69	67	3.4%	61	14.0%	76	-8.6%	84	-18.2%
500 - CUTLER BAY LOCAL	170	151	12.6%	152	11.9%	257	-33.9%	119	42.4%
510 - SKYLAKE CIRCULATOR (*)	102	111	-8.1%	217	-53.0%	287	-64.4%	165	-38.2%
12/21 WEEKEND INTERLINE	2,680	2,552	5.0%	3,290	-18.5%	3,050	-12.1%	2,528	6.0%
FEDERATION GARDENS SHUTTLE	31	34	-8.9%	20	53.8%	25	25.5%	28	8.3%
<b>Total</b>	<b>122,488</b>	<b>118,702</b>	<b>3.2%</b>	<b>107,331</b>	<b>14.1%</b>	<b>132,941</b>	<b>-7.9%</b>	<b>93,742</b>	<b>30.7%</b>

## METROBUS AVERAGE SUNDAY BOARDINGS BY ROUTE

Route	Average Sunday	Average Sunday	Percent Change	Average Sunday	Percent Change	Average Sunday	Percent Change	Average Sunday	Percent Change
<b>Sundays</b>	Feb-25	Jan-25	MOM	Oct-23	MO16M	Feb-24	YOY	Feb-20	Current vs Feb-20
2	957	744	28.6%	1,214	-21.2%	792	20.8%	1,335	-28.3%
3	4,486	4,676	-4.0%	4,408	1.8%	4,659	-3.7%	4,353	3.1%
7	1,527	1,426	7.1%	1,632	-6.5%	1,691	-9.7%	1,654	-7.7%
8	1,669	1,490	12.0%	1,838	-9.2%	1,597	4.5%	1,746	-4.5%
9	4,783	4,623	3.5%	2,756	73.6%	4,265	12.2%	2,549	87.6%
10				1,632		0		1,441	
11	5,418	5,362	1.0%	3,803	42.4%	5,501	-1.5%	3,917	38.3%
14	1,182	1,012	16.8%			920	28.4%		
15	515	405	27.0%	53	871.2%	280	83.7%	56	827.5%
16				1,023		0		997	
17	3,059	2,966	3.1%	1,920	59.3%	2,706	13.1%	1,833	66.9%
20	1,550	1,405	10.3%			2,069	-25.1%		
22	1,050	1,012	3.8%	1,915	-45.2%	1,148	-8.5%	1,548	-32.2%
24-CORAL WAY LIMITED	1,231	1,130	8.9%	1,108	11.1%	1,171	5.1%	905	36.0%
26	1,025	914	12.1%	871	17.7%	890	15.2%	717	43.1%
27	3,593	3,400	5.7%	3,146	14.2%	3,532	1.7%	2,918	23.1%
31-BUSWAY LOCAL				0		0		715	
32	1,174	1,035	13.5%	768	52.8%	812	44.5%	772	52.1%
35	1,364	1,420	-4.0%	1,175	16.0%	1,194	14.2%	942	44.8%
36	3,620	3,556	1.8%	1,160	212.0%	3,166	14.3%	1,111	226.0%
37	2,167	1,955	10.8%	1,755	23.5%	2,157	0.4%	1,739	24.6%
38 TRANSITWAY MAX	3,873	3,747	3.3%	4,957	-21.9%	4,739	-18.3%	4,147	-6.6%
40	800	667	19.9%	542	47.5%	675	18.6%	447	78.9%
42				425		0		416	
52	809	807	0.3%	496	63.0%	811	-0.2%	466	73.6%
54	1,126	1,067	5.5%	1,181	-4.6%	1,112	1.3%	1,171	-3.8%
62	1,157	1,172	-1.2%	1,040	11.3%	1,162	-0.4%	891	30.0%
70	182	157	15.9%			143	27.1%		
72	427	420	1.5%	259	64.6%	399	7.1%	265	61.3%
73	261	236	10.5%	602	-56.7%	219	18.9%	495	-47.3%
75	1,442	1,397	3.2%	352	310.2%	1,253	15.1%	271	432.7%
77	4,557	4,137	10.2%	3,980	14.5%	4,275	6.6%	2,815	61.9%
79	5,003	4,719	6.0%	4,837	3.4%	5,094	-1.8%	4,804	4.1%

## METROBUS AVERAGE SUNDAY BOARDINGS BY ROUTE

Route	Average Sunday	Average Sunday	Percent Change	Average Sunday	Percent Change	Average Sunday	Percent Change	Average Sunday	Percent Change
<b>Sundays</b>	<b>Feb-25</b>	<b>Jan-25</b>	<b>MOM</b>	<b>Oct-23</b>	<b>MO16M</b>	<b>Feb-24</b>	<b>YOY</b>	<b>Feb-20</b>	<b>Current vs Feb-20</b>
87	511	516	-1.0%	362	41.1%	446	14.4%	319	60.0%
88	1,109	1,055	5.1%	1,255	-11.6%	1,052	5.4%	1,286	-13.7%
97	157	157	0.1%	149	5.5%	130	21.0%	201	-21.8%
100	10,053	9,678	3.9%	3,492	187.9%	9,603	4.7%	3,469	189.8%
103 - C								212	
103	769	736	4.4%	729	5.5%	788	-2.4%	607	26.7%
104	518	498	4.1%	348	49.0%	505	2.6%	317	63.5%
105 - E				634		0		616	
107	1,017	930	9.3%	187	443.6%	1,018	-0.1%	162	527.5%
108 - H				363		0		328	
110 - J				1,699		0		1,638	
113 - M				444		0		431	
115				66		0		80	
119 - S				7,612		0		7,141	
125	1,928	1,895	1.7%	1,036	86.1%	1,683	14.6%	895	115.4%
135	712	604	17.8%	474	50.3%	580	22.9%	349	103.9%
137-WEST DADE CONNECTION	1,166	1,237	-5.8%	956	22.0%	984	18.4%	879	32.6%
150-MIAMI BEACH AIRPORT EXPRESS	1,449	1,254	15.5%	1,966	-26.3%	1,526	-5.0%	1,574	-7.9%
152	152	151	0.4%	331	-54.2%	142	7.1%	199	-23.6%
183	2,106	2,007	4.9%	1,569	34.2%	1,911	10.2%	1,413	49.1%
199	1,023	928	10.2%	887	15.4%	828	23.6%	658	55.5%
202 - LITTLE HAITI CONN				21		0		39	
207 (7th St)-LITTLE HAVANA CONN	596	506	17.8%	648	-8.1%	545	9.3%	796	-25.2%
208 (8th St)-LITTLE HAVANA CONN	775	693	11.9%	862	-10.0%	677	14.5%	911	-14.9%
241 TUTTLE LIMITED				187		0			
301-DADE MONROE EXPRESS	1,318	1,234	6.7%	867	52.0%	892	47.7%	751	75.4%
302-CARD SOUND EXPRESS	113	112	0.7%	72	57.5%	83	36.7%	57	97.8%
338 - WEEKEND EXPRESS	144	171	-16.0%	247	-41.9%	210	-31.5%	252	-43.0%
400 - SOUTH OWL	71	72	-0.8%	70	1.8%	102	-30.1%	83	-13.9%
401 - NORTH OWL	81	83	-2.5%	65	24.6%	71	14.2%	87	-7.5%
500 - CUTLER BAY LOCAL	86	86	-1.0%	86	-0.8%	77	11.4%	59	46.2%
510 - SKYLAKE CIRCULATOR (*)	105	127	-16.9%	194	-45.8%	274	-61.6%	143	-26.4%
12/21 WEEKEND INTERLINE	2,154	2,114	1.9%	2,700	-20.2%	2,155	0.0%	2,048	5.2%
<b>Total</b>	<b>88,114</b>	<b>83,902</b>	<b>5.0%</b>	<b>81,427</b>	<b>8.2%</b>	<b>84,707</b>	<b>4.0%</b>	<b>75,428</b>	<b>16.8%</b>



## METROBUS TOTAL MONTHLY BOARDINGS BY ROUTE

Route	Total Month	Total Month	Percent Change	Total Month	Percent Change	Total Month	Percent Change	Total Month	Percent Change
<b>total month</b>	<b>Feb-25</b>	<b>Jan-25</b>	<b>MOM</b>	<b>Oct-23</b>	<b>MO16M</b>	<b>Feb-24</b>	<b>YOY</b>	<b>Feb-20</b>	<b>Current vs Feb-20</b>
2	57,063	57,924	-1.5%	77,976	-26.8%	49,414	15.5%	75,463	-24.4%
3	199,118	219,830	-9.4%	164,203	21.3%	234,324	-15.0%	146,294	36.1%
7	85,394	93,162	-8.3%	104,507	-18.3%	106,539	-19.8%	86,077	-0.8%
8	116,236	117,892	-1.4%	120,821	-3.8%	122,048	-4.8%	95,295	22.0%
9	264,937	286,684	-7.6%	171,265	54.7%	287,645	-7.9%	135,924	94.9%
10				70,338		0		64,874	
11	289,721	296,709	-2.4%	253,837	14.1%	302,115	-4.1%	187,425	54.6%
12	57,632	58,066	-0.7%	63,603	-9.4%	62,508	-7.8%	55,585	3.7%
14	31,336	30,943	1.3%			27,597	13.5%		
15	17,419	16,462	5.8%	4,545	283.3%	11,434	52.3%	4,114	323.4%
16				55,959		0		49,061	
17	164,555	182,098	-9.6%	110,727	48.6%	181,483	-9.3%	96,715	70.1%
19				39,745		0		30,847	
20	62,775	66,978	-6.3%			102,009	-38.5%		
21	36,947	38,223	-3.3%	46,355	-20.3%	42,153	-12.4%	36,341	1.7%
22	56,699	63,901	-11.3%	118,329	-52.1%	66,545	-14.8%	89,404	-36.6%
24-CORAL WAY LIMITED	58,741	59,976	-2.1%	59,432	-1.2%	66,170	-11.2%	36,237	62.1%
26	58,034	61,276	-5.3%	49,521	17.2%	62,656	-7.4%	42,683	36.0%
27	210,281	232,885	-9.7%	188,160	11.8%	243,521	-13.6%	171,282	22.8%
29				11,342		0		10,684	
31-BUSWAY LOCAL						0		29,125	
32	59,871	62,032	-3.5%	68,263	-12.3%	49,335	21.4%	56,027	6.9%
34 TRANSITWAY EXPRESS	37,525	37,364	0.4%	36,002	4.2%	38,852	-3.4%	40,159	-6.6%
35	64,851	66,154	-2.0%	79,573	-18.5%	62,884	3.1%	59,041	9.8%
36	165,635	173,898	-4.8%	70,698	134.3%	162,935	1.7%	61,606	168.9%
37	118,857	122,199	-2.7%	93,471	27.2%	120,855	-1.7%	82,870	43.4%
38 TRANSITWAY MAX	162,722	169,675	-4.1%	175,803	-7.4%	199,253	-18.3%	167,379	-2.8%
39 TRANSITWAY EXPRESS	19,056	18,010	5.8%	16,333	16.7%	18,246	4.4%	17,853	6.7%
40	43,010	44,835	-4.1%	57,992	-25.8%	48,675	-11.6%	40,497	6.2%
42				26,611		0		20,825	
46 - LIBERTY CITY CONN.				477		0		814	
52	38,784	39,942	-2.9%	35,844	8.2%	43,579	-11.0%	30,522	27.1%
54	69,139	71,286	-3.0%	81,490	-15.2%	74,625	-7.4%	72,125	-4.1%
56	6,040	6,125	-1.4%	8,598	-29.8%	13,705	-55.9%	7,071	-14.6%
57				11,491		0		8,665	
new 57	3,957	4,382	-9.7%						
62	69,453	74,241	-6.4%	67,398	3.0%	70,274	-1.2%	46,582	49.1%
70	7,914	8,552	-7.5%	3,546	123.2%	7,882	0.4%	2,690	194.2%

## METROBUS TOTAL MONTHLY BOARDINGS BY ROUTE

Route	Total Month	Total Month	Percent Change	Total Month	Percent Change	Total Month	Percent Change	Total Month	Percent Change
<b>total month</b>	<b>Feb-25</b>	<b>Jan-25</b>	<b>MOM</b>	<b>Oct-23</b>	<b>MO16M</b>	<b>Feb-24</b>	<b>YOY</b>	<b>Feb-20</b>	<b>Current vs Feb-20</b>
72	22,736	23,324	-2.5%	17,459	30.2%	23,557	-3.5%	18,433	23.3%
73	31,108	31,464	-1.1%	70,903	-56.1%	34,139	-8.9%	48,767	-36.2%
75	75,936	79,161	-4.1%	39,021	94.6%	75,233	0.9%	31,994	137.3%
77	257,292	278,805	-7.7%	261,039	-1.4%	307,325	-16.3%	174,833	47.2%
79	220,846	237,732	-7.1%	239,146	-7.7%	229,766	-3.9%	200,268	10.3%
82 - WESTCHESTER CIRC				1,488		0		1,482	
87	48,793	50,944	-4.2%	46,254	5.5%	56,957	-14.3%	33,273	46.6%
88	47,784	50,116	-4.7%	66,138	-27.8%	53,393	-10.5%	54,772	-12.8%
95-EXPRESS GOLDEN GLADES	30,256	31,481	-3.9%	26,295	15.1%	27,665	9.4%	57,860	-47.7%
97	6,626	6,775	-2.2%	6,337	4.6%	5,146	28.8%	5,558	19.2%
100	446,204	463,186	-3.7%	174,819	155.2%	430,914	3.5%	170,942	161.0%
new 101	15,639	15,343	1.9%						
103 - C								11,682	
103	43,782	49,045	-10.7%	51,871	-15.6%	56,406	-22.4%	40,918	7.0%
104	29,263	30,136	-2.9%	26,049	12.3%	31,480	-7.0%	20,351	43.8%
105 - E				37,092		0		31,302	
107	53,146	54,800	-3.0%	20,040	165.2%	57,198	-7.1%	16,118	229.7%
108 - H				14,133		0		12,624	
110 - J				79,080		0		66,481	
113 - M				24,040		0		21,548	
115				3,968		0		4,334	
119 - S				281,456		0		242,257	
125	111,816	130,107	-14.1%	56,547	97.7%	115,943	-3.6%	43,178	159.0%
132 -TRI-RAIL DORAL SHUTTLE	1,090	1,008	8.1%	804	35.6%	1,023	6.5%	312	249.4%
135	47,335	50,514	-6.3%	43,211	9.5%	51,537	-8.2%	32,067	47.6%
136	2,993	3,126	-4.3%	3,557	-15.9%	3,748	-20.1%	2,524	18.6%
137-WEST DADE CONNECTION	61,413	61,475	-0.1%	56,750	8.2%	63,144	-2.7%	41,167	49.2%
150-MIAMI BEACH AIRPORT EXPRESS	43,019	44,021	-2.3%	65,763	-34.6%	44,769	-3.9%	51,651	-16.7%
152	8,509	9,608	-11.4%	26,285	-67.6%	9,983	-14.8%	19,325	-56.0%
155 - BISCAYNE GARDENS CIRC				985		0		881	
175 - NW MIAMI-DADE EXPRESS								661	
183	123,618	125,142	-1.2%	96,050	28.7%	132,219	-6.5%	77,570	59.4%
199	47,014	50,848	-7.5%	50,634	-7.1%	49,896	-5.8%	36,325	29.4%
202 - LITTLE HAITI CONN				2,620		0		3,200	
203 - BISCAYNE MAX	22,276	24,743	-10.0%	80,650	-72.4%	34,637	-35.7%	66,684	-66.6%

# METROBUS TOTAL MONTHLY BOARDINGS BY ROUTE

Route	Total Month	Total Month	Percent Change	Total Month	Percent Change	Total Month	Percent Change	Total Month	Percent Change
<b>total month</b>	<b>Feb-25</b>	<b>Jan-25</b>	<b>MOM</b>	<b>Oct-23</b>	<b>MO16M</b>	<b>Feb-24</b>	<b>YOY</b>	<b>Feb-20</b>	<b>Current vs Feb-20</b>
204 KILLIAN MAX	11,822	12,169	-2.9%	13,632	-13.3%	14,001	-15.6%	21,418	-44.8%
207 (7th St)-LITTLE HAVANA CONN	40,646	39,871	1.9%	46,970	-13.5%	44,460	-8.6%	38,127	6.6%
208 (8th St)-LITTLE HAVANA CONN	40,824	39,838	2.5%	44,922	-9.1%	44,388	-8.0%	35,018	16.6%
211 OVERTOWN CIRCULATOR				1,567		0		1,159	
211 - FLAGLER MAX	34,798	34,271	1.5%	84,135	-58.6%	41,687	-16.5%	62,186	-44.0%
212-SWEETWATER CIRC				494		0		295	
217 - BUNCHE PARK CIRC				1,759		0		1,949	
238-EAST/WEST CONN				13,036		0		8,987	
241 TUTTLE LIMITED				9,471		0			
254-BROWNSVILLE CIRC				105		0		384	
267-LUDLAM LIMITED				3,567		0		2,978	
272 SUNSET MAX (*)	7,521	8,032	-6.4%	9,423	-20.2%	7,859	-4.3%	11,004	-31.7%
277-7TH AVENUE MAX				19,345		0		13,669	
279 - 79 STREET MAX	17,529	17,931	-2.2%	10,318	69.9%	15,066	16.3%	7,228	142.5%
286-NORTH POINTE CIRC				2,279		0		2,145	
287-SAGA BAY MAX	6,698	6,813	-1.7%	7,499	-10.7%	8,488	-21.1%	7,160	-6.5%
288 KENDALL MAX	9,727	10,061	-3.3%	8,189	18.8%	11,151	-12.8%	15,249	-36.2%
297-27th AVENUE ORANGE MAX				27,047		0		27,125	
301-DADE MONROE EXPRESS	39,910	42,682	-6.5%	28,889	38.1%	29,413	35.7%	23,838	67.4%
302-CARD SOUND EXPRESS	4,461	4,136	7.9%	2,728	63.5%	2,968	50.3%	2,236	99.5%
338 - WEEKEND EXPRESS	1,292	1,505	-14.2%	2,274	-43.2%	1,501	-13.9%	2,191	-41.0%
344	3,575	3,705	-3.5%	1,666	114.6%	2,747	30.1%	1,919	86.3%
400 - SOUTH OWL	2,353	2,700	-12.9%	2,324	1.2%	2,475	-4.9%	2,301	2.3%
401 - NORTH OWL	1,945	2,155	-9.7%	1,899	2.4%	1,943	0.1%	2,641	-26.4%
500 - CUTLER BAY LOCAL	4,484	4,718	-5.0%	4,907	-8.6%	7,405	-39.4%	3,984	12.6%
510 - SKYLAKE CIRCULATOR (*)	8,124	8,974	-9.5%	12,211	-33.5%	10,168	-20.1%	7,033	15.5%
836 EXPRESS	6,253	6,790	-7.9%	5,428	15.2%	7,043	-11.2%		
837 EXPRESS	4,726	4,481	5.5%	4,281	10.4%	4,273	10.6%		
MetroLink NoMi West	7,030	6,163	14.1%						
MetroLink North Miami	4,445	4,802	-7.4%						
MetroLink LeJeune	1,478	1,510	-2.1%						
MetroLink Killian Parkway	3,500	3,373	3.8%						
MetroLink Alton Road									
MetroLink Opa-Locka	721	672	7.3%						
12/21 WEEKEND INTERLINE	19,338	20,776	-6.9%	26,661	-27.5%	20,818	-7.1%	20,830	-7.2%
AHEPA SHUTTLE	76	92	-17.4%	71	7.0%	83	-8.4%	83	-8.4%
FEDERATION GARDENS SHUTTLE	123	135	-8.9%	80	53.8%	98	25.5%	142	-13.4%
GREEN HILLS SHUTTLE	26	23	13.0%	26	0.0%	33	-21.2%	36	-27.8%
KINGS CREEK SHUTTLE	41	45	-8.9%	55	-25.5%	45	-8.9%	52	-21.2%
MEEK / MARQUESS SHUTTLE	68	72	-5.6%						
ROBERT SHARP SHUTTLE	122	96	27.1%	92	32.6%	113	8.0%	38	221.1%
SIERRA LAKES SHUTTLE	96	82	17.1%	62	54.8%	100	-4.0%	180	-46.7%
<b>Total</b>	<b>4,715,948</b>	<b>4,973,281</b>	<b>-5.2%</b>	<b>4,912,151</b>	<b>-4.0%</b>	<b>5,053,665</b>	<b>-6.7%</b>	<b>4,123,083</b>	<b>14.4%</b>

## BUS RIDERSHIP BY ROUTE SERVICE COMPARISON (MONTH-OVER-MONTH)

Boardings by Service Type and Route	Average Weekday	Average Weekday	Percent Change	Average Saturday	Average Saturday	Percent Change	Average Sunday	Average Sunday	Percent Change	Total Monthly	Total Monthly	Percent Change
	Feb-25	Jan-25	MOM	Feb-25	Jan-25	MOM	Feb-25	Jan-25	MOM	Feb-25	Jan-25	MOM
<b>Directly Operated Express Routes</b>												
34 TRANSITWAY EXPRESS	1,876	1,698	10.5%							37,525	37,364	0.4%
39 TRANSITWAY EXPRESS	953	819	16.4%							19,056	18,010	5.8%
95-EXPRESS GOLDEN GLADES	1,513	1,431	5.7%							30,256	31,481	-3.9%
150-MIAMI BEACH AIRPORT EXPRESS	1,559	1,473	5.8%	1,510	1,336	13.0%	1,449	1,254	15.5%	43,019	44,021	-2.3%
338 - WEEKEND EXPRESS				179	162	10.5%	144	171	-16.0%	1,292	1,505	-14.2%
836 EXPRESS	313	309	1.3%							6,253	6,790	-7.9%
837 EXPRESS	236	204	16.0%							4,726	4,481	5.5%
<b>Subtotal Express Routes</b>	<b>6,450</b>	<b>5,933</b>	<b>8.7%</b>	<b>1,690</b>	<b>1,499</b>	<b>12.7%</b>	<b>1,593</b>	<b>1,426</b>	<b>11.7%</b>	<b>142,127</b>	<b>143,652</b>	<b>-1.1%</b>
<b>Percentage of All Bus Routes</b>	<b>3.3%</b>	<b>3.2%</b>		<b>1.4%</b>	<b>1.3%</b>		<b>1.8%</b>	<b>1.7%</b>		<b>3.0%</b>	<b>2.9%</b>	
<b>Contracted Routes - Local Service (*)</b>												
2	2,422	2,238	8.2%	1,199	1,241	-3.4%	957	744	28.6%	57,063	57,924	-1.5%
15	663	583	13.9%	523	405	29.2%	515	405	27.0%	17,419	16,462	5.8%
29												
46 - LIBERTY CITY CONN.												
56	282	260	8.4%	101	102	-0.5%				6,040	6,125	-1.4%
new 57	186	183	1.4%	61	89	-31.1%				3,957	4,382	-9.7%
70	316	316	0.0%	218	204	6.6%	182	157	15.9%	7,914	8,552	-7.5%
72	938	867	8.2%	566	536	5.7%	427	420	1.5%	22,736	23,324	-2.5%
82 - WESTCHESTER CIRC												
97	263	242	8.4%	187	166	12.5%	157	157	0.1%	6,626	6,775	-2.2%
115												
152	348	364	-4.5%	236	209	13.2%	152	151	0.4%	8,509	9,608	-11.4%
155 - BISCAYNE GARDENS CIRC												
202 - LITTLE HAITI CONN												
211 OVERTOWN CIRCULATOR												
212-SWEETWATER CIRC												
217 - BUNCHE PARK CIRC												
254-BROWNSVILLE CIRC												
267-LUDLAM LIMITED												
286-NORTH POINTE CIRC												
344	156	153	1.8%	116	86	35.6%				3,575	3,705	-3.5%
401 - NORTH OWL	67	67	0.5%	69	67	3.4%				1,945	2,155	-9.7%
MetroLink NoMi West	352	280	25.5%				81	83	-2.5%	7,030	6,163	14.1%
MetroLink North Miami	222	218	1.8%							4,445	4,802	-7.4%
MetroLink LeJeune	74	69	7.7%							1,478	1,510	-2.1%
MetroLink Killian Parkway	175	153	14.1%							3,500	3,373	3.8%
MetroLink Opa-Locka	36	31	18.0%							721	672	7.3%
<b>Subtotal Contracted Reg. &amp; Circ. Routes</b>	<b>6,499</b>	<b>6,025</b>	<b>7.9%</b>	<b>3,276</b>	<b>3,102</b>	<b>5.6%</b>	<b>2,469</b>	<b>2,117</b>	<b>16.6%</b>	<b>152,958</b>	<b>155,532</b>	<b>-1.7%</b>
<b>Percentage of All Bus Routes</b>	<b>3.4%</b>	<b>3.2%</b>		<b>2.7%</b>	<b>2.6%</b>		<b>2.8%</b>	<b>2.5%</b>		<b>3.2%</b>	<b>3.1%</b>	

- (1) Several express routes were suspended beginning at the end of Mar-20, due to the SARS-CoV-2 pandemic, while other routes had alignment and schedule modifications made to them, in an ongoing effort to optimize service delivery.
- (2) A second major round of changes took place with the 11/13/23 lineup known as the Better Bus Network, as listed at the start of this Metrobus section.

## BUS RIDERSHIP BY ROUTE SERVICE COMPARISON (MONTH-OVER-MONTH)

Boardings by Service Type and Route	Average Weekday	Average Weekday	Percent Change	Average Saturday	Average Saturday	Percent Change	Average Sunday	Average Sunday	Percent Change	Total Monthly	Total Monthly	Percent Change
	Feb-25	Jan-25	MOM	Feb-25	Jan-25	MOM	Feb-25	Jan-25	MOM	Feb-25	Jan-25	MOM
<b>Contracted Express Routes</b>												
301-DADE MONROE EXPRESS	1,441	1,394	3.4%	1,454	1,461	-0.4%	1,318	1,234	6.7%	39,910	42,682	-6.5%
302-CARD SOUND EXPRESS	167	138	21.4%	166	136	22.2%	113	112	0.7%	4,461	4,136	7.9%
<b>Subtotal Contracted Express Routes</b>	<b>1,608</b>	<b>1,532</b>	<b>5.0%</b>	<b>1,621</b>	<b>1,597</b>	<b>1.5%</b>	<b>1,430</b>	<b>1,346</b>	<b>6.2%</b>	<b>44,371</b>	<b>46,818</b>	<b>-5.2%</b>
<b>Percentage of All Bus Routes</b>	<b>0.8%</b>	<b>0.8%</b>		<b>1.3%</b>	<b>1.3%</b>		<b>1.6%</b>	<b>1.6%</b>		<b>0.9%</b>	<b>0.9%</b>	
<b>Limited Stop Routes</b>												
24-CORAL WAY LIMITED	2,365	2,202	7.4%	1,630	1,472	10.8%	1,231	1,130	8.9%	58,741	59,976	-2.1%
38 TRANSITWAY MAX	6,291	5,894	6.7%	5,353	5,317	0.7%				162,722	169,675	-4.1%
203 - BISCAYNE MAX	1,114	1,125	-1.0%				3,873	3,747	3.3%	22,276	24,743	-10.0%
204 KILLIAN MAX	591	553	6.9%							11,822	12,169	-2.9%
211 - FLAGLER MAX	1,740	1,558	11.7%							34,798	34,271	1.5%
241 TUTTLE LIMITED												
272 SUNSET MAX (*)	376	365	3.0%							7,521	8,032	-6.4%
277-7TH AVENUE MAX												
279 - 79 STREET MAX	876	815	7.5%							17,529	17,931	-2.2%
287-SAGA BAY MAX	335	310	8.1%							6,698	6,813	-1.7%
288 KENDALL MAX	486	457	6.3%							9,727	10,061	-3.3%
297-27th AVENUE ORANGE MAX												
<b>Subtotal Limited Stop Routes</b>	<b>14,175</b>	<b>13,279</b>	<b>6.7%</b>	<b>6,983</b>	<b>6,789</b>	<b>2.9%</b>	<b>5,103</b>	<b>4,877</b>	<b>4.6%</b>	<b>331,834</b>	<b>343,671</b>	<b>-3.4%</b>
<b>Percentage of All Bus Routes</b>	<b>7.3%</b>	<b>7.2%</b>		<b>5.7%</b>	<b>5.7%</b>		<b>5.8%</b>	<b>5.8%</b>		<b>7.0%</b>	<b>6.9%</b>	
<b>Directly Operated Free Routes</b>												
132 -TRI-RAIL DORAL SHUTTLE	55	46	18.9%							1,090	1,008	8.1%
500 - CUTLER BAY LOCAL	173	167	3.4%	170	151	12.6%	86	86	-1.0%	4,484	4,718	-5.0%
510 - SKYLAKE CIRCULATOR (*)	365	359	1.6%	102	111	-8.1%	105	127	-16.9%	8,124	8,974	-9.5%
<b>Subtotal Free Directly Operated Routes</b>	<b>592</b>	<b>572</b>	<b>3.5%</b>	<b>272</b>	<b>262</b>	<b>3.8%</b>	<b>191</b>	<b>213</b>	<b>-10.4%</b>	<b>13,698</b>	<b>14,700</b>	<b>-6.8%</b>
<b>Percentage of All Bus Routes</b>	<b>0.3%</b>	<b>0.3%</b>		<b>0.2%</b>	<b>0.2%</b>		<b>0.2%</b>	<b>0.3%</b>		<b>0.3%</b>	<b>0.3%</b>	
<b>Contractor-Operated Lifeline Routes</b>												
GREEN HILLS SHUTTLE	7	6	13.0%							26	23	13.0%
KINGS CREEK SHUTTLE	10	9	13.9%							41	45	-8.9%
MEEK / MARQUESS SHUTTLE	17	18	-5.6%							68	72	-5.6%
SIERRA LAKES SHUTTLE	24	16	46.3%							96	82	17.1%
ROBERT SHARP SHUTTLE	31	24	27.1%							122	96	27.1%
AHEPA SHUTTLE	19	18	3.3%							76	92	-17.4%
FEDERATION GARDENS SHUTTLE				31	34	-8.9%				123	135	-8.9%
<b>Subtotal Contractor-Operated Lifeline Routes</b>	<b>107</b>	<b>92</b>	<b>17.1%</b>	<b>31</b>	<b>34</b>	<b>-8.9%</b>				<b>552</b>	<b>545</b>	<b>1.3%</b>
<b>Percentage of All Bus Routes</b>	<b>0.1%</b>	<b>0.0%</b>		<b>0.0%</b>	<b>0.0%</b>					<b>0.0%</b>	<b>0.0%</b>	
<b>All Other (Regular) Routes</b>	<b>164,332</b>	<b>158,049</b>	<b>4.0%</b>	<b>108,617</b>	<b>105,421</b>	<b>3.0%</b>	<b>77,328</b>	<b>73,922</b>	<b>4.6%</b>	<b>4,030,408</b>	<b>4,268,363</b>	<b>-5.6%</b>
<b>Percentage of All Bus Routes</b>	<b>84.8%</b>	<b>85.2%</b>		<b>88.7%</b>	<b>88.8%</b>		<b>87.8%</b>	<b>88.1%</b>		<b>85.5%</b>	<b>85.8%</b>	
<b>Total Bus System</b>	<b>193,763</b>	<b>185,480</b>	<b>4.5%</b>	<b>122,488</b>	<b>118,702</b>	<b>3.2%</b>	<b>88,114</b>	<b>83,902</b>	<b>5.0%</b>	<b>4,715,948</b>	<b>4,973,281</b>	<b>-5.2%</b>

## BUS RIDERSHIP BY ROUTE SERVICE TYPE LINEUPS COMPARISON (MONTH-OVER-16 MONTH)

Boardings by Service Type and Route	Average Weekday	Average Weekday	Percent Change	Average Saturday	Average Saturday	Percent Change	Average Sunday	Average Sunday	Percent Change	Total Monthly	Total Monthly	Percent Change
	Feb-25	Oct-23	25 vs 23	Feb-25	Oct-23	25 vs 23	Feb-25	Oct-23	25 vs 23	Feb-25	Oct-23	25 vs 23
<b>Directly Operated Express Routes</b>												
34 TRANSITWAY EXPRESS	1,876	1,636	14.7%							37,525	36,002	4.2%
39 TRANSITWAY EXPRESS	953	742	28.3%							19,056	16,333	16.7%
95-EXPRESS GOLDEN GLADES	1,513	1,195	26.6%							30,256	26,295	15.1%
150-MIAMI BEACH AIRPORT EXPRESS	1,559	2,149	-27.5%	1,510	2,161	-30.1%	1,449	1,966	-26.3%	43,019	65,763	-34.6%
338 - WEEKEND EXPRESS				179	259	-30.9%	144	247	-41.9%	1,292	2,274	-43.2%
836 EXPRESS	313	247	26.7%							6,253	5,428	15.2%
837 EXPRESS	236	195	21.4%							4,726	4,281	10.4%
<b>Subtotal Express Routes</b>	<b>6,450</b>	<b>6,165</b>	<b>4.6%</b>	<b>1,690</b>	<b>2,420</b>	<b>-30.2%</b>	<b>1,593</b>	<b>2,214</b>	<b>-28.0%</b>	<b>142,127</b>	<b>156,376</b>	<b>-9.1%</b>
<b>Percentage of All Bus Routes</b>	<b>3.3%</b>	<b>3.3%</b>		<b>1.4%</b>	<b>2.3%</b>		<b>1.8%</b>	<b>2.7%</b>		<b>3.0%</b>	<b>3.2%</b>	
<b>Contracted Routes - Local Service (*)</b>												
2	2,422	2,977	-18.6%	1,199	1,605	-25.3%	957	1,214	-21.2%	57,063	77,976	-26.8%
15	663	178	273.6%	523	93	460.9%	515	53	871.2%	17,419	4,545	283.3%
29		516									11,342	
46 - LIBERTY CITY CONN.		22									477	
56	282	391	-27.9%	101						6,040	8,598	-29.8%
new 57	186			61						3,957		
70	316	161	96.0%	218			182			7,914	3,546	123.2%
72	938	670	40.1%	566	357	58.8%	427	259	64.6%	22,736	17,459	30.2%
82 - WESTCHESTER CIRC		61			38						1,488	
97	263	225	16.9%	187	163	14.2%	157	149	5.5%	6,626	6,337	4.6%
115		151			80			66			3,968	
152	348	1,051	-66.9%	236	375	-37.0%	152	331	-54.2%	8,509	26,285	-67.6%
155 - BISCAYNE GARDENS CIRC		45									985	
202 - LITTLE HAITI CONN		110			22			21			2,620	
211 OVERTOWN CIRCULATOR		71									1,567	
212-SWEETWATER CIRC		22									494	
217 - BUNCHE PARK CIRC		80									1,759	
254-BROWNSVILLE CIRC		5									105	
267-LUDLAM LIMITED		162									3,567	
286-NORTH POINTE CIRC		93			61						2,279	
344	156	76	105.3%	116						3,575	1,666	114.6%
401 - NORTH OWL	67	61	11.1%	69	61	14.0%	81	65	24.6%	1,945	1,899	2.4%
MetroLink NoMi West	352									7,030		
MetroLink North Miami	222									4,445		
MetroLink LeJeune	74									1,478		
MetroLink Killian Parkway	175									3,500		
MetroLink Opa-Locka	36									721		
<b>Subtotal Contracted Reg. &amp; Circ. Routes</b>	<b>6,499</b>	<b>7,125</b>	<b>-8.8%</b>	<b>3,276</b>	<b>2,854</b>	<b>14.8%</b>	<b>2,469</b>	<b>2,158</b>	<b>14.4%</b>	<b>152,958</b>	<b>178,962</b>	<b>-14.5%</b>
<b>Percentage of All Bus Routes</b>	<b>3.4%</b>	<b>3.8%</b>		<b>2.7%</b>	<b>2.7%</b>		<b>2.8%</b>	<b>2.7%</b>		<b>3.2%</b>	<b>3.6%</b>	

- (1) Several express routes were suspended beginning at the end of Mar-20, due to the SARS-CoV-2 pandemic, while other routes had alignment and schedule modifications made to them, in an ongoing effort to optimize service delivery.
- (2) A second major round of changes took place with the 11/13/23 lineup known as the Better Bus Network, as listed at the start of this Metrobus section.

## BUS RIDERSHIP BY ROUTE SERVICE TYPE LINEUPS COMPARISON (MONTH-OVER-16 MONTH)

Boardings by Service Type and Route	Average Weekday	Average Weekday	Percent Change	Average Saturday	Average Saturday	Percent Change	Average Sunday	Average Sunday	Percent Change	Total Monthly	Total Monthly	Percent Change
	Feb-25	Oct-23	25 vs 23	Feb-25	Oct-23	25 vs 23	Feb-25	Oct-23	25 vs 23	Feb-25	Oct-23	25 vs 23
<b>Contracted Express Routes</b>												
301-DADE MONROE EXPRESS	1,441	955	50.9%	1,454	885	64.3%	1,318	867	52.0%	39,910	28,889	38.1%
302-CARD SOUND EXPRESS	167	91	84.5%	166	94	76.9%	113	72	57.5%	4,461	2,728	63.5%
<b>Subtotal Contracted Express Routes</b>	<b>1,608</b>	<b>1,046</b>	<b>53.8%</b>	<b>1,621</b>	<b>979</b>	<b>65.5%</b>	<b>1,430</b>	<b>938</b>	<b>52.4%</b>	<b>44,371</b>	<b>31,617</b>	<b>40.3%</b>
<b>Percentage of All Bus Routes</b>	<b>0.8%</b>	<b>0.6%</b>		<b>1.3%</b>	<b>0.9%</b>		<b>1.6%</b>	<b>1.2%</b>		<b>0.9%</b>	<b>0.6%</b>	
<b>Limited Stop Routes</b>												
24-CORAL WAY LIMITED	2,365	2,195	7.7%	1,630	1,400	16.4%	1,231	1,108	11.1%	58,741	59,432	-1.2%
38 TRANSITWAY MAX	6,291	5,714	10.1%	5,353	6,328	-15.4%	3,873	4,957	-21.9%	162,722	175,803	-7.4%
203 - BISCAYNE MAX	1,114	3,666	-69.6%							22,276	80,650	-72.4%
204 KILLIAN MAX	591	620	-4.6%							11,822	13,632	-13.3%
211 - FLAGLER MAX	1,740	3,824	-54.5%							34,798	84,135	-58.6%
241 TUTTLE LIMITED		348			222			187			9,471	
272 SUNSET MAX (*)	376	428	-12.2%							7,521	9,423	-20.2%
277-7TH AVENUE MAX		879									19,345	
279 - 79 STREET MAX	876	469	86.9%							17,529	10,318	69.9%
287-SAGA BAY MAX	335	341	-1.7%							6,698	7,499	-10.7%
288 KENDALL MAX	486	372	30.7%							9,727	8,189	18.8%
297-27th AVENUE ORANGE MAX		1,229									27,047	
<b>Subtotal Limited Stop Routes</b>	<b>14,175</b>	<b>20,086</b>	<b>-29.4%</b>	<b>6,983</b>	<b>7,950</b>	<b>-12.2%</b>	<b>5,103</b>	<b>6,252</b>	<b>-18.4%</b>	<b>331,834</b>	<b>504,944</b>	<b>-34.3%</b>
<b>Percentage of All Bus Routes</b>	<b>7.3%</b>	<b>10.8%</b>		<b>5.7%</b>	<b>7.4%</b>		<b>5.8%</b>	<b>7.7%</b>		<b>7.0%</b>	<b>10.3%</b>	
<b>Directly Operated Free Routes</b>												
132 - TRI-RAIL DORAL SHUTTLE	55	37	49.1%							1,090	804	35.6%
500 - CUTLER BAY LOCAL	173	176	-1.5%	170	152	11.9%	86	86	-0.8%	4,484	4,907	-8.6%
510 - SKYLAKE CIRCULATOR (*)	365	471	-22.6%	102	217	-53.0%	105	194	-45.8%	8,124	12,211	-33.5%
<b>Subtotal Free Directly Operated Routes</b>	<b>592</b>	<b>684</b>	<b>-13.4%</b>	<b>272</b>	<b>369</b>	<b>-26.4%</b>	<b>191</b>	<b>280</b>	<b>-32.0%</b>	<b>13,698</b>	<b>17,922</b>	<b>-23.6%</b>
<b>Percentage of All Bus Routes</b>	<b>0.3%</b>	<b>0.4%</b>		<b>0.2%</b>	<b>0.3%</b>		<b>0.2%</b>	<b>0.3%</b>		<b>0.3%</b>	<b>0.4%</b>	
<b>Contractor-Operated Lifeline Routes</b>												
GREEN HILLS SHUTTLE	7	5	25.0%							26	26	0.0%
KINGS CREEK SHUTTLE	10	14	-25.5%							41	55	-25.5%
MEEK / MARQUESS SHUTTLE	17									68		
SIERRA LAKES SHUTTLE	24	16	54.8%							96	62	54.8%
ROBERT SHARP SHUTTLE	31	23	32.6%							122	92	32.6%
AHEPA SHUTTLE	19	18	7.0%							76	71	7.0%
FEDERATION GARDENS SHUTTLE				31	20	53.8%				123	80	53.8%
<b>Subtotal Contractor-Operated Lifeline Routes</b>	<b>107</b>	<b>75</b>	<b>42.6%</b>	<b>31</b>	<b>20</b>	<b>53.8%</b>				<b>552</b>	<b>386</b>	<b>43.0%</b>
<b>Percentage of All Bus Routes</b>	<b>0.1%</b>	<b>0.0%</b>		<b>0.0%</b>	<b>0.0%</b>					<b>0.0%</b>	<b>0.0%</b>	
<b>All Other (Regular) Routes</b>	<b>164,332</b>	<b>150,140</b>	<b>9.5%</b>	<b>108,617</b>	<b>92,739</b>	<b>17.1%</b>	<b>77,328</b>	<b>69,584</b>	<b>11.1%</b>	<b>4,030,408</b>	<b>4,021,944</b>	<b>0.2%</b>
<b>Percentage of All Bus Routes</b>	<b>84.8%</b>	<b>81.0%</b>		<b>88.7%</b>	<b>86.4%</b>		<b>87.8%</b>	<b>85.5%</b>		<b>85.5%</b>	<b>81.9%</b>	
<b>Total Bus System</b>	<b>193,763</b>	<b>185,320</b>	<b>4.6%</b>	<b>122,488</b>	<b>107,331</b>	<b>14.1%</b>	<b>88,114</b>	<b>81,427</b>	<b>8.2%</b>	<b>4,715,948</b>	<b>4,912,151</b>	<b>-4.0%</b>

## Bus Routes as Ranked by Percentage of Average Weekday Ridership February 2025

Rank	Route	Average Weekday	Percent Share	Cumul Pct Share	Rank	Route	Average Weekday	Percent Share	Cumul Pct Share	Rank	Route	Average Weekday	Percent Share	Cumul Pct Share
1	100	17,408	9.0%	9.0%	32	34	1,876	1.0%	82.7%	63	97	263	0.1%	99.0%
2	11	11,795	6.1%	15.1%	33	88	1,866	1.0%	83.7%	64	837	236	0.1%	99.1%
3	9	10,912	5.6%	20.7%	34	21	1,847	1.0%	84.6%	65	8001	222	0.1%	99.3%
4	77	10,575	5.5%	26.2%	35	new 103	1,813	0.9%	85.6%	66	new 57	186	0.1%	99.4%
5	79	8,742	4.5%	30.7%	36	40	1,770	0.9%	86.5%	67	8003	175	0.1%	99.4%
6	27	8,672	4.5%	35.1%	37	207	1,743	0.9%	87.4%	68	500	173	0.1%	99.5%
7	3	7,783	4.0%	39.2%	38	new 211	1,740	0.9%	88.3%	69	302	167	0.1%	99.6%
8	17	6,674	3.4%	42.6%	39	208	1,688	0.9%	89.1%	70	344	156	0.1%	99.7%
9	36	6,600	3.4%	46.0%	40	52	1,578	0.8%	90.0%	71	136	150	0.1%	99.8%
10	38	6,291	3.2%	49.3%	41	150	1,559	0.8%	90.8%	72	400	85	0.0%	99.8%
11	183	5,168	2.7%	51.9%	42	95	1,513	0.8%	91.5%	73	8002	74	0.0%	99.9%
12	8	5,021	2.6%	54.5%	43	301	1,441	0.7%	92.3%	74	401	67	0.0%	99.9%
13	37	4,908	2.5%	57.1%	44	73	1,388	0.7%	93.0%	75	132	55	0.0%	99.9%
14	125	4,655	2.4%	59.5%	45	104	1,195	0.6%	93.6%	76	8005	36	0.0%	99.9%
15	7	3,571	1.8%	61.3%	46	14	1,136	0.6%	94.2%	77	RS	31	0.0%	100.0%
16	75	3,111	1.6%	62.9%	47	203	1,114	0.6%	94.8%	78	SL	24	0.0%	100.0%
17	12	2,882	1.5%	64.4%	48	39	953	0.5%	95.3%	79	AS	19	0.0%	100.0%
18	54	2,865	1.5%	65.9%	49	72	938	0.5%	95.7%	80	M/M	17	0.0%	100.0%
19	62	2,862	1.5%	67.3%	50	279	876	0.5%	96.2%	81	KC	10	0.0%	100.0%
20	35	2,619	1.4%	68.7%	51	new 101	782	0.4%	96.6%	82	GH	7	0.0%	100.0%
21	137	2,525	1.3%	70.0%	52	15	663	0.3%	96.9%					
22	32	2,458	1.3%	71.3%	53	204	591	0.3%	97.3%					
23	26	2,445	1.3%	72.5%	54	288	486	0.3%	97.5%					
24	2	2,422	1.2%	73.8%	55	272	376	0.2%	97.7%					
25	20	2,418	1.2%	75.0%	56	510	365	0.2%	97.9%					
26	24	2,365	1.2%	76.3%	57	8000	352	0.2%	98.1%					
27	22	2,329	1.2%	77.5%	58	152	348	0.2%	98.2%					
28	107	2,218	1.1%	78.6%	59	287	335	0.2%	98.4%					
29	87	2,152	1.1%	79.7%	60	70	316	0.2%	98.6%					
30	135	2,027	1.0%	80.8%	61	836	313	0.2%	98.7%					
31	199	1,898	1.0%	81.7%	62	56	282	0.1%	98.9%					
										entirely contracted in Feb-25				
										<b>Total Boardings</b>	<b>193,763</b>	<b>100.00%</b>		

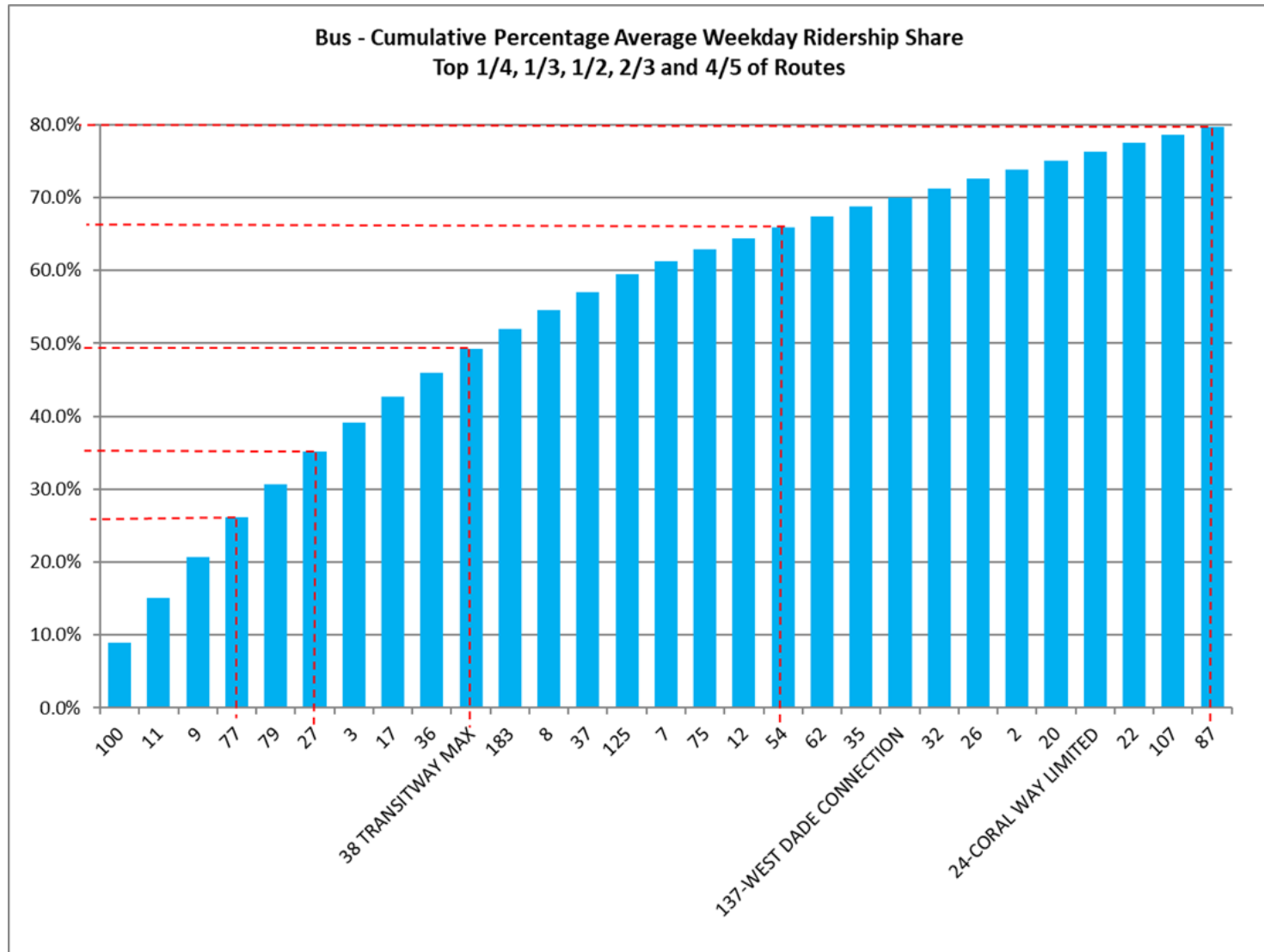
(1) Average weekday ridership rounded to the nearest unit.

(2) Includes the five Lifeline Shuttles that operate on weekdays: Ahepa (AS), Green Hills (GH), Kings Creek (KC), Meek/Marquess (M/M), Robert Sharp (RS) and Sierra Lakes (SL).

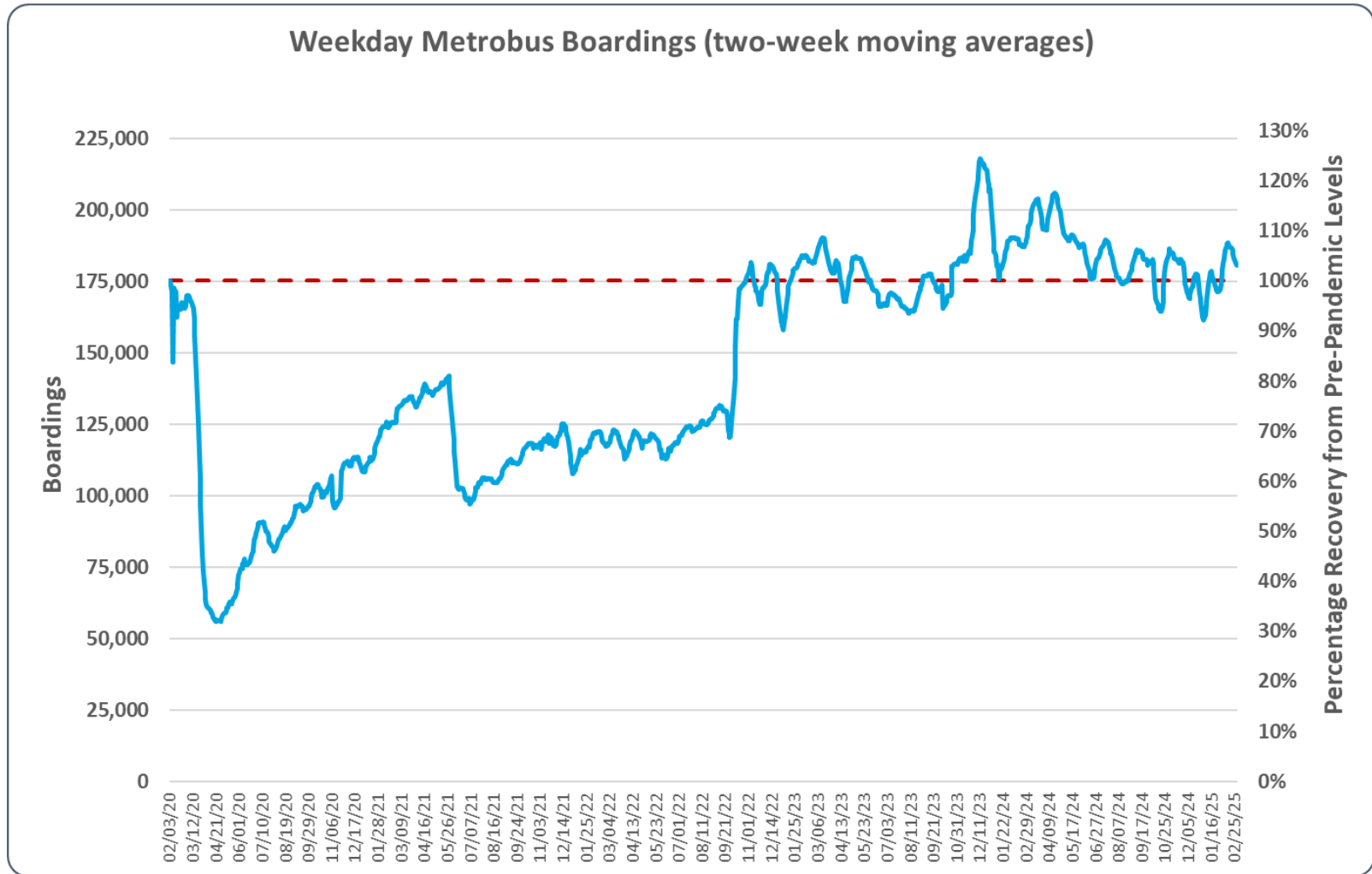
(3) Routes 8000, 8001, 8002, 8003 and 8005 refer to the five Better Bus Network MetroLink contracted supplemental routes, launched in July and August 2024 and still running: MetroLink NoMi West, MetroLink North Miami, MetroLink LeJeune, MetroLink Killian Parkway, and MetroLink Opa-Locka, respectively.



## METROBUS CUMULATIVE PERCENTAGE RIDERSHIP SHARE – BY ROUTE



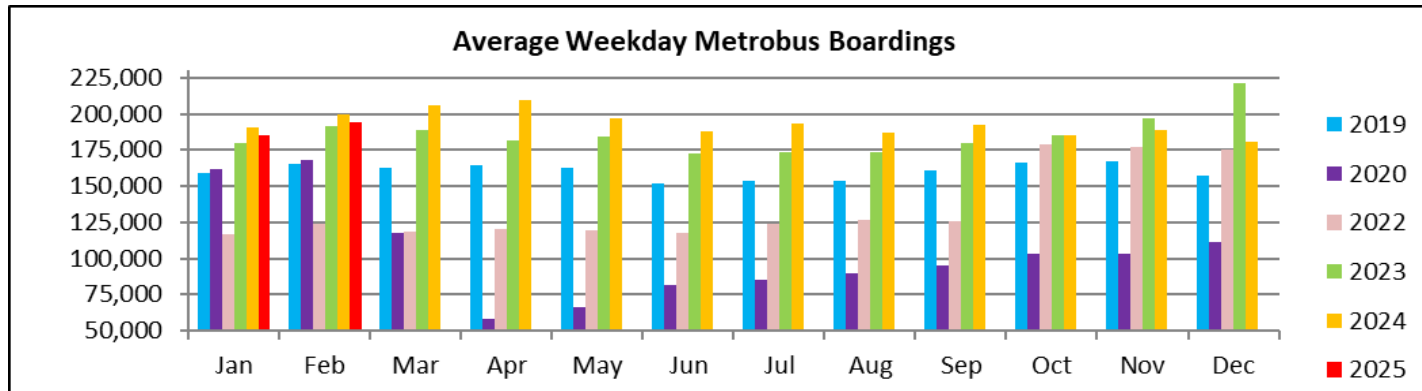
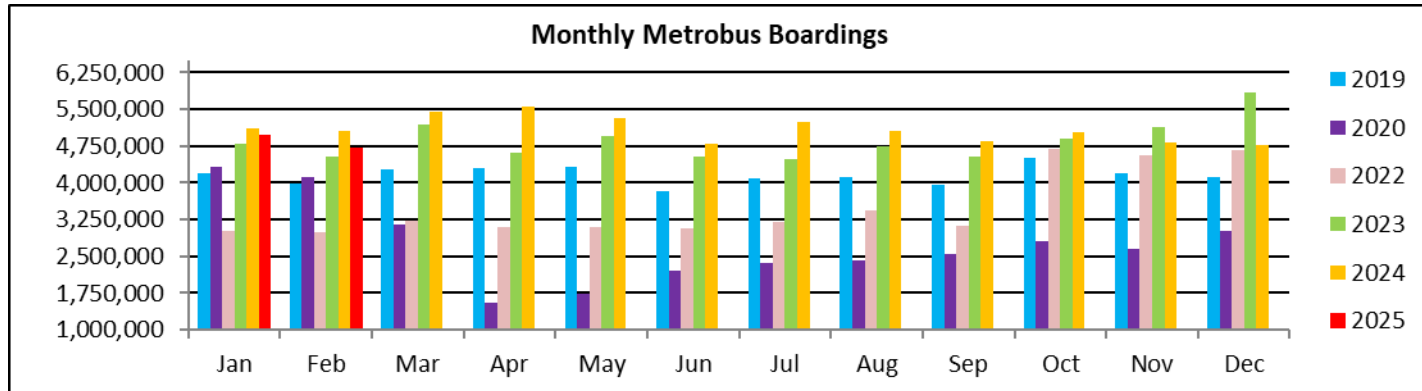
## METROBUS ESTIMATED WEEKDAY RIDERSHIP SINCE 02/01/20 (TWO-WEEK MOVING AVERAGES)



- (1) The red dotted line represents the pre-pandemic benchmark month (Feb-20) local maximum.
- (2) The pronounced dip in June 2021 is due to resumption of fares at the start of recovery from the SARS-CoV-2 pandemic; the pronounced increase in October 2022 is due to the switchover to automatic passenger counter sampling-based estimates for metrobus ridership; the isolated peak around December 2023 is due to the free fares marking the launch of the Better Bus Network.

February 2025

# TOTAL MONTHLY AND AVERAGE WEEKDAY RIDERSHIP YEAR OVER YEAR COMPARISON CHARTS – METROBUS



**“TOP 10 / BOTTOM 10” BUS ROUTES AVERAGE WEEKDAY RIDERSHIP PERFORMANCE  
MONTH OVER MONTH COMPARISON**

Route	Feb-25	Jan-25	Absolute Delta	Percent Delta
<b>100</b>	17,408	16,315	1,093	6.7%
<b>11</b>	11,795	10,829	966	8.9%
<b>183</b>	5,168	4,708	459	9.8%
<b>8</b>	5,021	4,609	412	8.9%
<b>38 TRANSITWAY MAX</b>	6,291	5,894	397	6.7%
<b>37</b>	4,908	4,569	339	7.4%
<b>36</b>	6,600	6,263	336	5.4%
<b>137-WEST DADE CONNECTION</b>	2,525	2,253	272	12.1%
<b>35</b>	2,619	2,358	261	11.1%
<b>12</b>	2,882	2,639	242	9.2%
<b>70</b>	316	316	0	0.0%
<b>125</b>	4,655	4,987	-333	-6.7%
<b>27</b>	8,672	8,882	-210	-2.4%
<b>17</b>	6,674	6,806	-132	-1.9%
<b>22</b>	2,329	2,402	-73	-3.0%
<b>103</b>	1,813	1,860	-46	-2.5%
<b>3</b>	7,783	7,828	-45	-0.6%
<b>152</b>	348	364	-17	-4.5%
<b>203 - BISCAYNE MAX</b>	1,114	1,125	-11	-1.0%
<b>400 - SOUTH OWL</b>	85	86	-1	-0.9%

(\*) Averages rounded to the nearest boarding, data as estimated from automatic passenger counter (APC) system; Lifeline shuttles excluded.

# **“TOP 10 / BOTTOM 10” BUS ROUTES SETS AVERAGE WEEKDAY RIDERSHIP PERFORMANCE YEAR OVER YEAR COMPARISON**

Route Set (*), (1), (2)	Feb-25	Feb-24	Absolute Delta	Percent Delta	routes included in set
<b>{ 100 }</b>	17,408	15,894	1,514	9.5%	<b>100, 105, 119, 120</b>
<b>{ 2 }</b>	2,422	2,018	404	20.0%	<b>2, 211</b>
<b>301</b>	1,441	1,047	395	37.7%	<b>301</b>
<b>{ 36 }</b>	6,600	6,222	378	6.1%	<b>36, 110</b>
<b>{ 279 }</b>	9,619	9,302	317	3.4%	<b>79, 112, 279</b>
<b>{ 11 }</b>	11,795	11,491	305	2.7%	<b>11, 212</b>
<b>15</b>	663	425	239	56.2%	<b>15</b>
<b>{ 95 }</b>	1,513	1,317	195	14.8%	<b>95, 175, 195, 196, 295, 296</b>
<b>{ 14 }</b>	1,136	975	161	16.5%	<b>14, 113, 241</b>
<b>{ 62 }</b>	2,862	2,753	109	4.0%	<b>62, 202</b>
<b>{ 77 }</b>	10,575	12,375	-1,800	-14.5%	<b>77, 277</b>
<b>{ 3 &amp; 203 }</b>	8,897	10,630	-1,734	-16.3%	<b>3, 93, 203</b>
<b>{ 38 }</b>	6,447	7,519	-1,073	-14.3%	<b>31, 38, 344</b>
<b>{ 27 }</b>	8,672	9,634	-963	-10.0%	<b>27, 297</b>
<b>{ 20 }</b>	4,876	5,822	-946	-16.3%	<b>20, 32, 115</b>
<b>{ 17 &amp; 22 &amp; 75 }</b>	12,113	12,837	-723	-5.6%	<b>17, 22, 75, 108, 217</b>
<b>7</b>	3,571	4,248	-677	-15.9%	<b>7</b>
<b>{ 9 }</b>	10,912	11,460	-548	-4.8%	<b>9, 10, 16</b>
<b>{ new 103 }</b>	1,813	2,270	-457	-20.1%	<b>33, new 103</b>
<b>{ new 211 }</b>	11,651	12,011	-360	-3.0%	<b>8, 24, 51, 82, 137, new 211</b>

(\*) Averages rounded to the nearest boarding, data as estimated from automatic passenger counter (APC) system; Lifeline shuttles excluded.

(1) The route sets, denoted by brackets, include the new 11/13/2023 lineup's Better Bus Network route designations, as well as older routes present for the first part of the month and previous months and years, then either renamed, absorbed, or eliminated. The sets were defined to enable reasonably fair comparisons between pre- and post-BBN timeframes, to the extent possible and practical, given the complexity of the changes for some of the routes and sets. The definitions were based on information from the DTPW website, and subject to future adjustments, if necessary.

(2) The adjective "new" in front of some new Better Bus Network-generated (recycled) route numbers was added to help distinguish those routes from older but different routes with the same number present in previous months or years.

# **“TOP 10 / BOTTOM 10” BUS ROUTES SETS AVERAGE WEEKDAY RIDERSHIP PERFORMANCE MONTH OVER 16-MONTH PRIOR COMPARISON**

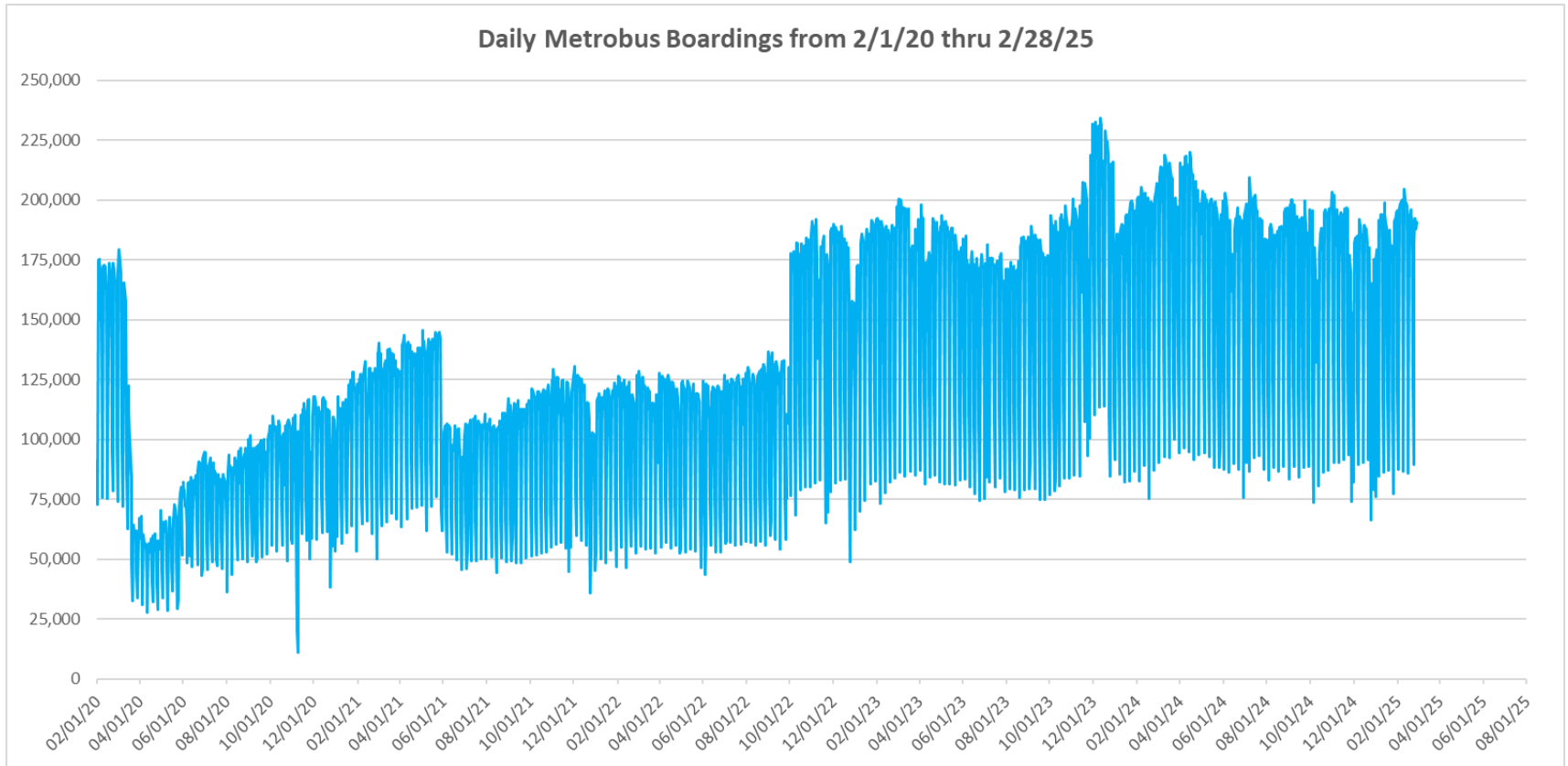
Route Set (*), (1), (2)	Feb-25	Oct-23	Absolute Delta	Percent Delta	routes included in set
<b>{ 11 }</b>	11,795	9,644	2,152	22.3%	<b>11, 212</b>
<b>{ 20 }</b>	4,876	2,850	2,026	71.1%	<b>20, 32, 115</b>
<b>{ 17 &amp; 22 &amp; 75 }</b>	12,113	10,796	1,317	12.2%	<b>17, 22, 75, 108, 217</b>
<b>{ 36 }</b>	6,600	5,600	1,000	17.9%	<b>36, 110</b>
<b>{ new 107 }</b>	5,434	4,447	987	22.2%	<b>35, 56, 70, 71, new 107, 248</b>
<b>{ 125 }</b>	4,655	3,906	749	19.2%	<b>19, 107, 125</b>
<b>{ 279 }</b>	9,619	8,950	669	7.5%	<b>79, 112, 279</b>
<b>{ 38 }</b>	6,447	5,790	657	11.3%	<b>31, 38, 344</b>
<b>26</b>	2,445	1,877	568	30.2%	<b>26</b>
<b>301</b>	1,441	955	486	50.9%	<b>301</b>
<b>{ 73 &amp; 183 }</b>	6,556	7,890	-1,334	-16.9%	<b>57, 73, 183, 238, 267, 286</b>
<b>{ new 211 }</b>	11,651	12,849	-1,198	-9.3%	<b>8, 24, 51, 82, 137, new 211</b>
<b>{ 2 }</b>	2,422	3,048	-626	-20.5%	<b>2, 211</b>
<b>150</b>	1,559	2,149	-590	-27.5%	<b>150</b>
<b>40</b>	1,770	2,344	-574	-24.5%	<b>40</b>
<b>88</b>	1,866	2,419	-553	-22.9%	<b>88</b>
<b>{ 52 }</b>	1,926	2,442	-516	-21.1%	<b>52, 152, 252</b>
<b>7</b>	3,571	4,021	-450	-11.2%	<b>7</b>
<b>{ 37 &amp; 54 }</b>	7,774	8,082	-308	-3.8%	<b>29, 37, 42, 54, 254</b>
<b>{ 77 }</b>	10,575	10,838	-264	-2.4%	<b>77, 277</b>

(\*) Averages rounded to the nearest boarding, data as estimated from automatic passenger counter (APC) system; Lifeline shuttles excluded.

(1) The route sets, denoted by brackets, include the new 11/13/2023 lineup's Better Bus Network route designations, as well as older routes present for the first part of the month and previous months and years, then either renamed, absorbed, or eliminated. The sets were defined to enable reasonably fair comparisons between pre- and post-BBN timeframes, to the extent possible and practical, given the complexity of the changes for some of the routes and sets. The definitions were based on information from the DTPW website, and subject to future adjustments, if necessary.

(2) The adjective "new" in front of some new Better Bus Network-generated (recycled) route numbers was added to help distinguish those routes from older but different routes with the same number present in previous months or years.

## DAILY METROBUS RIDERSHIP SINCE FEBRUARY 1, 2020



- (1) There was no Metrobus, Metrorail and Metromover service on 5/31/20, as a safety precaution, and no service for any of the four modes on 9/28/22, as a result of Hurricane Ian.
- (2) The dip at the start of the second week of Nov-20 is due to Hurricane Eta.
- (3) Daily variations from Oct-22 onward are a representation estimated from reports made available by the Bus APC data vendor; the finalized data is based on statistical sampling.
- (4) The reduction seen beginning 6/1/21 is partly due to the resumption of fares and partly the result of resuming reporting Cubic farebox data rather than bus APC counts; the jump seen at the very start of Oct-22 is due to the switch to APC bus ridership counts reporting beginning 10/1/22; the pronounced peak in Dec-23 is attributable to the Better Bus Network launch period and attendant free fares.
- (5) Periodic (weekly) variations are prominent, since weekday ridership is almost always significantly higher than weekend or holiday ridership.

## METROBUS PARKING PATRONAGE SUMMARY

### February 2025

PARK-RIDE LOT	ACTUAL AVAILABLE SPACES	ACTUAL OCCUPANCY	PERCENT OCCUPANCY
Transitway / SW 152nd St	200	87	44%
Transitway / SW 168th St (*)	149		
Transitway / SW 200th Street (**)	100		
Transitway / SW 112 Ave (Target)	450	274	61%
Transitway / SW 244th St	95	63	66%
Transitway / SW 296th St	139	35	25%
Transitway / SW 344th St	248	201	81%
Coral Reef Drive 117/ Turnpike	95	72	76%
Golden Glades Facility	2,150	435	20%
Hammocks Town Center (SW 152 Ave / SW 104 St)	50	18	36%
Kendall Dr./SW 127th Ave	161	15	9%
West Kendall Transit Term (Kendall Dr / SW162 Ave)	40	7	18%
NW 7th Avenue Transit Village (NW 7 Ave / NW 62 St)	25	24	96%
Miami Gardens Dr. / NW 73rd Ave	136	1	1%
Dolphin Station	348	86	25%
Tamiami Station (eff 11-2022)	442	91	21%
I-75 / Miami Gardens Dr (***)	298		
<b>TOTAL</b>	<b>5,126</b>	<b>1,409</b>	<b>27%</b>

(\*) Closed for construction beginning February 2022

(\*\*) Closed for construction beginning February 2025

(\*\*\*) Route 175 suspended 3/27/2020, discontinued with Better Bus Network 11/13/23



# Metrorail



February 2025

## METRORAIL AVERAGE WEEKDAY BOARDINGS BY STATION (†)

<b>Weekdays</b>	<b>Average Weekday</b>	<b>Average Weekday</b>	<b>Percent Change</b>	<b>Average Weekday</b>	<b>Percent Change</b>	<b>Average Weekday</b>	<b>Percent Change</b>	<b>Average Weekday</b>	<b>Percent Change</b>
<b>STATIONS</b>	<b>Feb-25</b>	<b>Feb-24</b>	<b>YOY</b>	<b>Feb-20</b>	<b>Current vs Feb-20</b>	<b>Jan-25</b>	<b>MOM</b>	<b>Feb-19</b>	<b>YO5Y</b>
ALLAPATTAH	1,701	1,772	-4.0%	1,942	-12.4%	1,641	3.7%	1,878	-9.5%
BRICKELL	5,814	5,758	1.0%	6,529	-11.0%	5,433	7.0%	6,301	-7.7%
BROWNSVILLE	573	501	14.2%	862	-33.6%	526	8.8%	867	-33.9%
UHEALTH   JACKSON	4,514	4,172	8.2%	6,143	-26.5%	4,456	1.3%	5,904	-23.5%
COCONUT GROVE (*)		1,751		1,795		1,839		1,722	
CULMER	768	1,042	-26.4%	1,392	-44.9%	971	-21.0%	1,308	-41.3%
DADELAND NORTH	4,929	4,356	13.2%	5,926	-16.8%	4,386	12.4%	6,059	-18.6%
DADELAND SOUTH	4,706	5,034	-6.5%	7,150	-34.2%	4,421	6.4%	7,202	-34.7%
DOUGLAS ROAD	4,276	3,406	25.5%	3,624	18.0%	3,512	21.8%	3,855	10.9%
DR. MARTIN LUTHER KING, JR.	940	776	21.0%	1,157	-18.8%	885	6.1%	1,150	-18.3%
EARLINGTON HEIGHTS	1,461	1,474	-0.9%	1,662	-12.1%	1,377	6.1%	1,651	-11.5%
GOVERNMENT CENTER	7,166	7,026	2.0%	10,557	-32.1%	6,992	2.5%	10,663	-32.8%
HIALEAH	1,280	1,153	11.0%	1,253	2.1%	1,012	26.4%	1,386	-7.7%
MIAMI INTERNATIONAL AIRPORT	1,343	1,224	9.7%	1,711	-21.5%	1,350	-0.5%	1,682	-20.2%
NORTHSIDE	1,096	1,191	-8.0%	1,476	-25.7%	1,017	7.8%	1,452	-24.5%
OKEECHOBEE	1,051	1,012	3.9%	1,164	-9.7%	1,012	3.9%	1,187	-11.4%
OVERTOWN / ARENA	2,248	1,968	14.2%	2,274	-1.1%	2,090	7.6%	2,167	3.7%
PALMETTO	1,422	1,253	13.4%	1,543	-7.9%	1,342	5.9%	1,528	-7.0%
SANTA CLARA	871	792	10.0%	812	7.2%	804	8.3%	785	10.8%
SOUTH MIAMI	2,394	2,281	4.9%	3,015	-20.6%	2,244	6.7%	3,036	-21.2%
TRI-RAIL	1,071	1,170	-8.5%	1,207	-11.3%	1,069	0.2%	1,165	-8.1%
UNIVERSITY	2,684	2,343	14.6%	2,784	-3.6%	2,163	24.1%	2,576	4.2%
VIZCAYA	1,781	1,297	37.3%	1,390	28.2%	1,564	13.9%	1,209	47.3%
<b>TOTAL</b>	<b>54,087</b>	<b>52,755</b>	<b>2.5%</b>	<b>67,367</b>	<b>-19.7%</b>	<b>52,107</b>	<b>3.8%</b>	<b>66,735</b>	<b>-19.0%</b>

(†) In this table and those which follow, "YOY" stands for "year-over-year", "MOM" for "month-over-month" and, e.g., "YO5Y" for "year over five years", i.e., current month vs 12 months prior, one month prior, and 60 months prior, respectively. The Feb-20 numbers serve as a pre-pandemic benchmark.

(\*) Coconut Grove Station was closed for renovations during the entire month.

## METRORAIL AVERAGE SATURDAY BOARDINGS BY STATION

<b>Saturdays</b>	<b>Average Saturday</b>	<b>Average Saturday</b>	<b>Percent Change</b>	<b>Average Saturday</b>	<b>Percent Change</b>	<b>Average Saturday</b>	<b>Percent Change</b>	<b>Average Saturday</b>	<b>Percent Change</b>
<b>STATIONS</b>	<b>Feb-25</b>	<b>Feb-24</b>	<b>YOY</b>	<b>Feb-20</b>	<b>Current vs Feb-20</b>	<b>Jan-25</b>	<b>MOM</b>	<b>Feb-19</b>	<b>YO5Y</b>
ALLAPATTAH	894	935	-4.3%	1,051	-14.9%	864	3.5%	1,050	-14.8%
BRICKELL	2,801	2,733	2.5%	2,811	-0.4%	2,645	5.9%	2,751	1.8%
BROWNSVILLE	313	287	9.1%	520	-39.8%	299	4.8%	560	-44.1%
UHEALTH   JACKSON	710	655	8.4%	959	-26.0%	741	-4.1%	954	-25.6%
COCONUT GROVE		997		928		1,075		1,006	
CULMER	400	466	-14.2%	721	-44.6%	475	-15.8%	687	-41.8%
DADELAND NORTH	1,622	1,400	15.8%	1,994	-18.7%	1,403	15.6%	2,114	-23.3%
DADELAND SOUTH	1,830	2,092	-12.5%	2,625	-30.3%	1,724	6.2%	2,748	-33.4%
DOUGLAS ROAD	1,881	1,385	35.8%	1,319	42.6%	1,463	28.6%	1,522	23.6%
DR. MARTIN LUTHER KING, JR.	562	426	32.0%	625	-10.1%	486	15.5%	639	-12.0%
EARLINGTON HEIGHTS	790	818	-3.5%	935	-15.6%	718	10.0%	976	-19.1%
GOVERNMENT CENTER	2,894	2,868	0.9%	4,262	-32.1%	2,843	1.8%	4,050	-28.5%
HIALEAH	609	540	12.8%	583	4.5%	489	24.5%	644	-5.3%
MIAMI INTERNATIONAL AIRPORT	947	834	13.6%	1,330	-28.8%	967	-2.0%	1,325	-28.5%
NORTHSIDE	634	717	-11.5%	878	-27.8%	575	10.4%	957	-33.7%
OKEECHOBEE	422	402	4.9%	408	3.3%	403	4.6%	411	2.7%
OVERTOWN / ARENA	836	680	23.0%	678	23.2%	810	3.2%	598	39.7%
PALMETTO	419	390	7.3%	458	-8.6%	403	4.0%	442	-5.3%
SANTA CLARA	403	364	10.6%	422	-4.5%	391	3.2%	431	-6.4%
SOUTH MIAMI	1,102	1,045	5.5%	1,256	-12.2%	987	11.7%	1,332	-17.3%
TRI-RAIL	498	610	-18.4%	614	-19.0%	503	-1.0%	606	-17.8%
UNIVERSITY	869	783	11.1%	714	21.7%	701	24.0%	735	18.2%
VIZCAYA	786	576	36.5%	622	26.4%	659	19.3%	613	28.3%
<b>TOTAL</b>	<b>22,220</b>	<b>22,001</b>	<b>1.0%</b>	<b>26,714</b>	<b>-16.8%</b>	<b>21,620</b>	<b>2.8%</b>	<b>27,146</b>	<b>-18.1%</b>

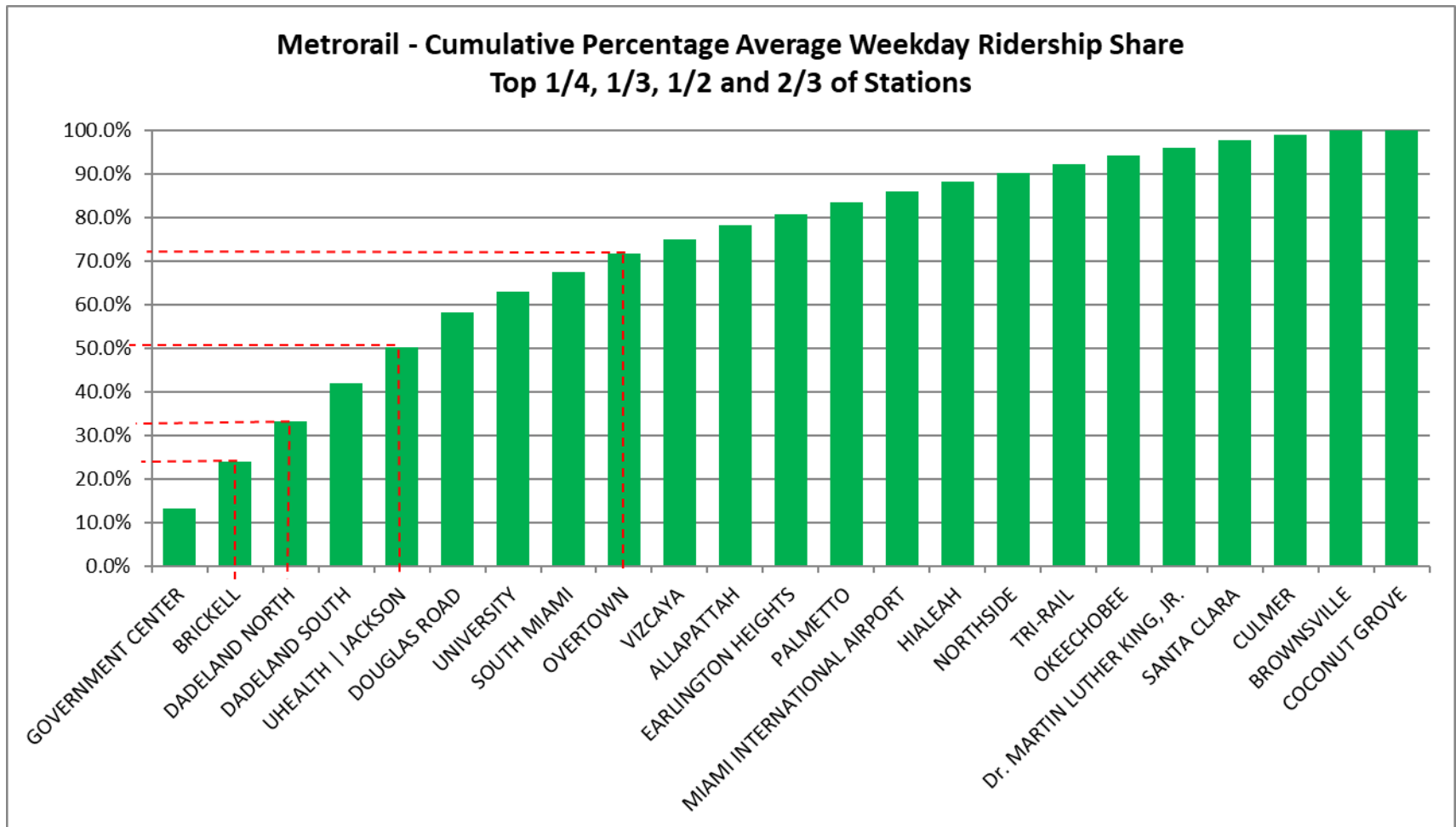
## METRORAIL AVERAGE SUNDAY BOARDINGS BY STATION

<b>Sundays</b>	<b>Average Sunday</b>	<b>Average Sunday</b>	<b>Percent Change</b>	<b>Average Sunday</b>	<b>Percent Change</b>	<b>Average Sunday</b>	<b>Percent Change</b>	<b>Average Sunday</b>	<b>Percent Change</b>
<b>STATIONS</b>	<b>Feb-25</b>	<b>Feb-24</b>	<b>YOY</b>	<b>Feb-20</b>	<b>Current vs Feb-20</b>	<b>Jan-25</b>	<b>MOM</b>	<b>Feb-19</b>	<b>YO5Y</b>
ALLAPATTAH	659	622	5.9%	791	-16.7%	650	1.3%	772	-14.7%
BRICKELL	2,299	1,877	22.5%	2,379	-3.4%	1,993	15.4%	2,210	4.0%
BROWNSVILLE	236	203	16.1%	406	-41.9%	214	10.5%	441	-46.5%
UHEALTH   JACKSON	548	484	13.2%	791	-30.8%	572	-4.2%	813	-32.7%
COCONUT GROVE		614		838		821		785	
CULMER	321	339	-5.2%	616	-47.9%	372	-13.7%	533	-39.8%
DADELAND NORTH	1,300	918	41.6%	1,685	-22.9%	1,048	24.0%	1,511	-14.0%
DADELAND SOUTH	1,403	1,473	-4.7%	2,210	-36.5%	1,345	4.3%	2,060	-31.9%
DOUGLAS ROAD	1,440	884	62.9%	1,090	32.1%	1,053	36.8%	1,073	34.2%
DR. MARTIN LUTHER KING, JR.	403	307	31.3%	506	-20.5%	382	5.5%	447	-9.9%
EARLINGTON HEIGHTS	617	558	10.7%	799	-22.8%	562	9.7%	734	-15.9%
GOVERNMENT CENTER	2,905	2,115	37.3%	4,044	-28.2%	2,217	31.0%	2,943	-1.3%
HIALEAH	432	362	19.4%	472	-8.4%	338	27.9%	497	-13.0%
MIAMI INTERNATIONAL AIRPORT	966	831	16.2%	1,343	-28.1%	967	-0.1%	1,286	-24.9%
NORTHSIDE	502	521	-3.7%	653	-23.1%	444	13.1%	721	-30.4%
OKEECHOBEE	292	257	13.6%	273	7.0%	300	-2.4%	261	12.2%
OVERTOWN / ARENA	751	534	40.8%	544	38.0%	677	11.0%	491	52.9%
PALMETTO	292	239	22.0%	336	-13.2%	239	22.0%	272	7.6%
SANTA CLARA	286	211	35.7%	280	2.2%	258	10.8%	278	2.7%
SOUTH MIAMI	822	689	19.3%	987	-16.6%	729	12.8%	945	-13.0%
TRI-RAIL	399	361	10.5%	528	-24.5%	392	1.8%	517	-22.9%
UNIVERSITY	763	482	58.3%	608	25.4%	652	16.9%	480	59.0%
VIZCAYA	708	364	94.7%	524	35.1%	516	37.2%	422	67.7%
<b>TOTAL</b>	<b>18,341</b>	<b>15,242</b>	<b>20.3%</b>	<b>22,701</b>	<b>-19.2%</b>	<b>16,737</b>	<b>9.6%</b>	<b>20,490</b>	<b>-10.5%</b>

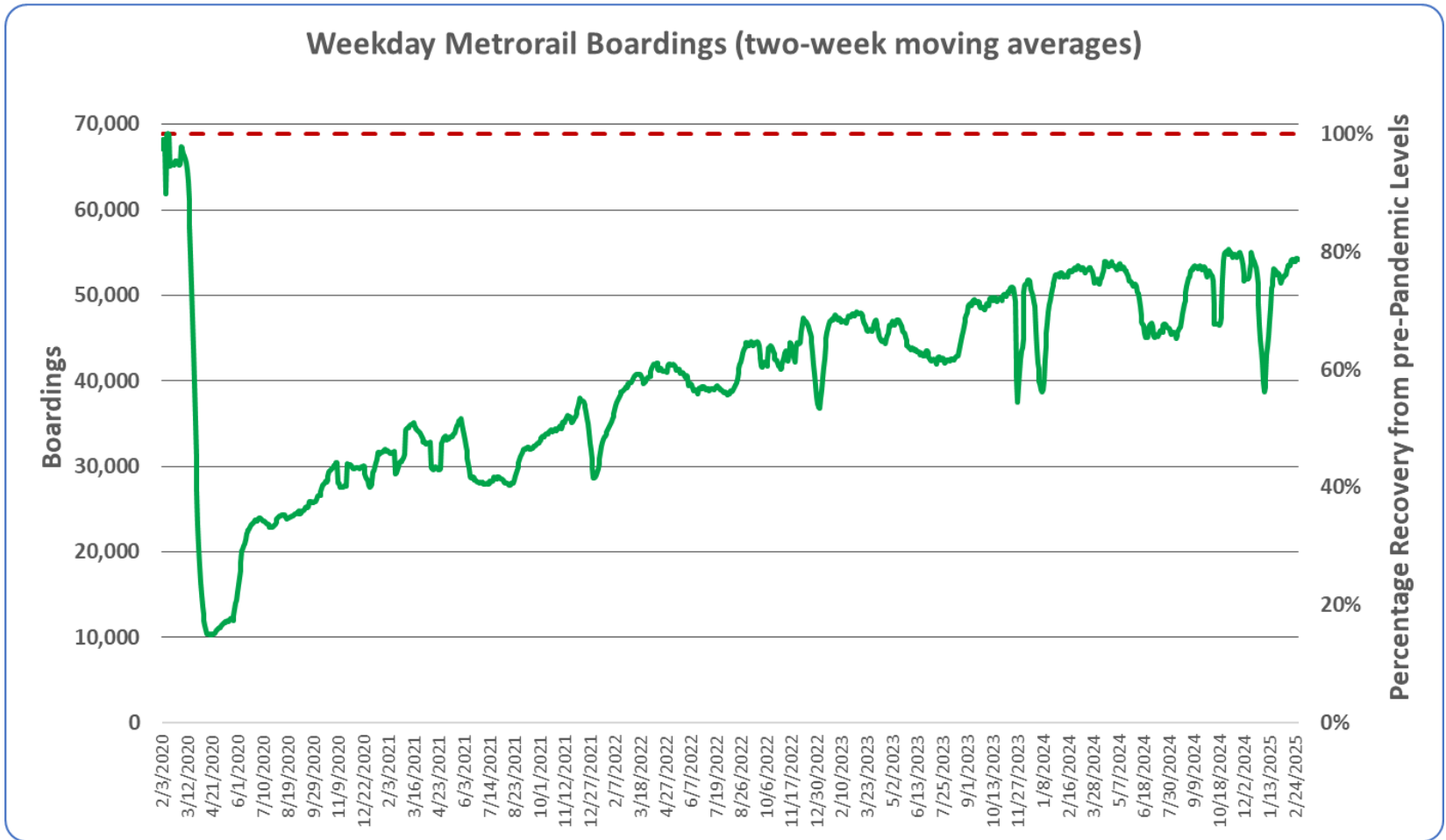
## METRORAIL TOTAL MONTHLY BOARDINGS BY STATION

Monthly Totals	Total Month	Total Month	Percent Change	Total Month	Percent Change	Total Month	Percent Change	Total Month	Percent Change
STATIONS	Feb-25	Feb-24	YOY	Feb-20	Current vs Feb-20	Jan-25	MOM	Feb-19	YO5Y
ALLAPATTAH	39,827	43,045	-7.5%	46,868	-15.0%	42,346	-5.9%	44,352	-10.2%
BRICKELL	134,948	137,776	-2.1%	152,259	-11.4%	137,865	-2.1%	143,998	-6.3%
BROWNSVILLE	13,558	12,422	9.1%	21,285	-36.3%	13,863	-2.2%	21,157	-35.9%
UHEALTH   JACKSON	94,168	90,903	3.6%	128,921	-27.0%	100,554	-6.4%	123,289	-23.6%
COCONUT GROVE		42,945		43,580		29,675		41,323	
CULMER	17,906	24,675	-27.4%	33,497	-46.5%	24,748	-27.6%	30,535	-41.4%
DADELAND NORTH	108,422	99,058	9.5%	132,894	-18.4%	104,754	3.5%	133,234	-18.6%
DADELAND SOUTH	105,456	118,318	-10.9%	162,416	-35.1%	108,549	-2.8%	160,580	-34.3%
DOUGLAS ROAD	97,563	79,221	23.2%	82,141	18.8%	86,500	12.8%	86,015	13.4%
DR. MARTIN LUTHER KING, JR.	22,417	19,033	17.8%	27,980	-19.9%	23,135	-3.1%	26,980	-16.9%
EARLINGTON HEIGHTS	34,442	36,028	-4.4%	40,697	-15.4%	35,436	-2.8%	39,312	-12.4%
GOVERNMENT CENTER	163,185	164,409	-0.7%	243,414	-33.0%	173,167	-5.8%	235,727	-30.8%
HIALEAH	29,491	27,504	7.2%	29,516	-0.1%	25,492	15.7%	31,858	-7.4%
MIAMI INTERNATIONAL AIRPORT	34,438	32,242	6.8%	46,115	-25.3%	38,351	-10.2%	44,018	-21.8%
NORTHSIDE	26,198	29,722	-11.9%	36,127	-27.5%	26,619	-1.6%	35,377	-25.9%
OKEECHOBEE	23,633	23,576	0.2%	26,026	-9.2%	24,986	-5.4%	26,012	-9.1%
OVERTOWN / ARENA	50,353	45,277	11.2%	49,911	0.9%	51,641	-2.5%	46,508	8.3%
PALMETTO	30,846	28,453	8.4%	33,944	-9.1%	31,714	-2.7%	32,875	-6.2%
SANTA CLARA	19,933	18,727	6.4%	19,245	3.6%	20,325	-1.9%	18,265	9.1%
SOUTH MIAMI	54,876	54,171	1.3%	69,412	-20.9%	55,818	-1.7%	68,629	-20.0%
TRI-RAIL	24,725	28,307	-12.7%	29,120	-15.1%	27,099	-8.8%	27,637	-10.5%
UNIVERSITY	59,758	53,938	10.8%	61,253	-2.4%	51,964	15.0%	55,832	7.0%
VIZCAYA	41,039	30,566	34.3%	32,497	26.3%	39,015	5.2%	27,945	46.9%
<b>TOTAL</b>	<b>1,227,182</b>	<b>1,240,316</b>	<b>-1.1%</b>	<b>1,549,118</b>	<b>-20.8%</b>	<b>1,273,616</b>	<b>-3.6%</b>	<b>1,501,458</b>	<b>-18.3%</b>

## METRORAIL CUMULATIVE PERCENTAGE RIDERSHIP SHARE



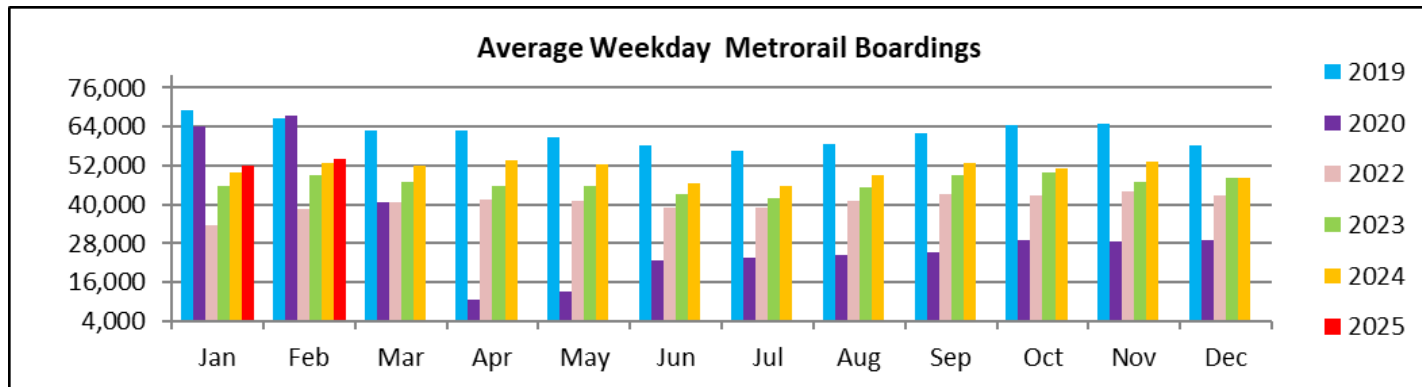
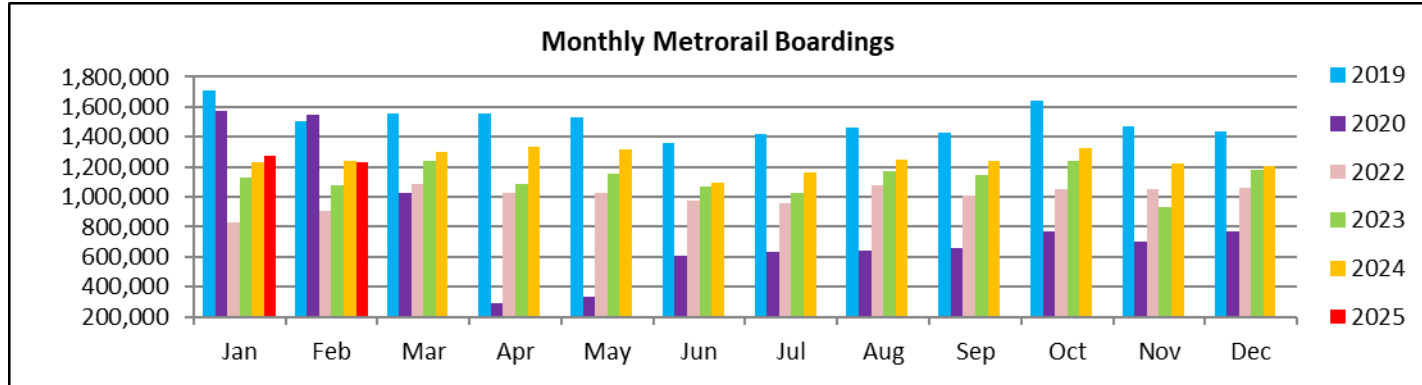
## METRORAIL WEEKDAY RIDERSHIP SINCE 02/01/20 (TWO-WEEK MOVING AVERAGES)



- (1) The red dotted line represents the pre-pandemic benchmark month (Feb-20) maximum.
- (2) Pronounced local minima are generally due to hurricanes or other storms, less often data outages, with associated delayed reductions in smoothed ridership.

February 2025

# **TOTAL MONTHLY AND AVERAGE WEEKDAY RIDERSHIP YEAR OVER YEAR COMPARISON CHARTS – METRORAIL**



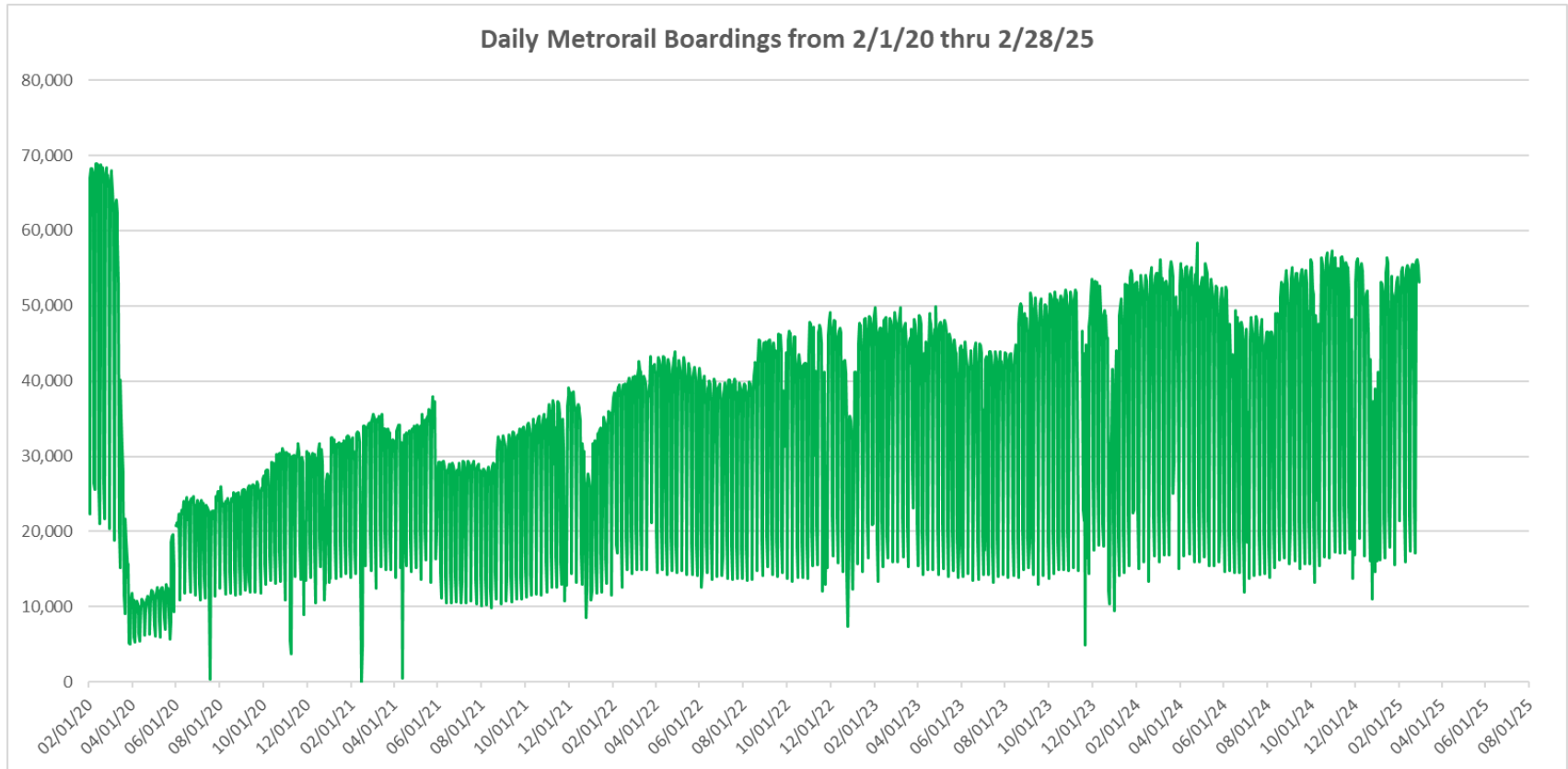


**“TOP 5 / BOTTOM 5” RAIL STATIONS AVERAGE WEEKDAY RIDERSHIP PERFORMANCE  
YEAR OVER YEAR COMPARISONS**

<b>Station</b>	<b>Feb-25</b>	<b>Feb-24</b>	<b>Absolute Delta (1)</b>	<b>Percent Delta</b>
DOUGLAS ROAD	4,276	3,406	869	25.5%
DADELAND NORTH	4,929	4,356	573	13.2%
VIZCAYA	1,781	1,297	484	37.3%
UHEALTH   JACKSON	4,514	4,172	342	8.2%
UNIVERSITY	2,684	2,343	341	14.6%
DADELAND SOUTH	4,706	5,034	-328	-6.5%
CULMER	768	1,042	-275	-26.4%
TRI-RAIL	1,071	1,170	-100	-8.5%
NORTHSIDE	1,096	1,191	-95	-8.0%
ALLAPATTAH	1,701	1,772	-71	-4.0%

(1) Averages rounded to the nearest boarding.

## DAILY METRORAIL RIDERSHIP SINCE FEBRUARY 1, 2020



- (1) There was no Metrobus, Metrorail and Metromover service on 5/31/20, as a safety precaution, and no service for any of the four modes on 9/28/22 as a result of Hurricane Ian..
- (2) The dip at the start of the second week of Nov-20 is due to Hurricane Eta; these are *raw data* from the Unleash Live contractor AI video system.
- (3) The dip on 4/13/21 is due to a loss of connectivity at all stations, affecting a few stations over the next two days as well; a similar loss of connectivity is seen on 11/21/23.
- (4) The reduction seen beginning 6/1/21 is partly due to the resumption of fares and partly the result of resuming reporting Cubic faregate data rather than video camera counts.
- (5) As a result of free fares to launch the Better Bus Network, faregates are open beginning 11/13/23, and Unleash Live AI video system ridership counts are reported starting 11/17/23; the isolated peak in Dec-23 is visible.
- (6) Periodic (weekly) variations are prominent, since weekday ridership is almost always significantly higher than weekend or holiday ridership; a few low-count days are due to system outages, often associated with construction or renovation work.

## METRORAIL PARKING PATRONAGE SUMMARY

### February 2025

PARK-RIDE LOT	ACTUAL CAPACITY (1)	ACTUAL OCCUPANCY (2)	PERCENT OCCUPANCY
DADELAND SOUTH	1,125	824	73%
DADELAND NORTH	1,702	1,460	86%
SOUTH MIAMI	816	378	46%
UNIVERSITY	230	206	90%
DOUGLAS ROAD	190		
COCONUT GROVE	100		
VIZCAYA	90	82	91%
CULMER	25	20	79%
SANTA CLARA	61	31	51%
ALLAPATTAH	74	8	10%
EARLINGTON HEIGHTS	361	179	49%
BROWNSVILLE	100	85	85%
DR. MARTIN LUTHER KING JR. (MDT)	62		
DR. MARTIN LUTHER KING JR. (GARAGE)	631		
NORTHSIDE	100	85	85%
HIALEAH	238	86	36%
OKEECHOBEE	1,256	180	14%
PALMETTO	700	190	27%
<b>TOTAL</b>	<b>7,861</b>	<b>3,814</b>	<b>49%</b>

(1) Number of spaces could vary each week; shown are available spaces during final week of month, as submitted by DTPW Safety & Security office.

(2) All sampled occupancy data provided by DTPW Safety & Security office; calculations are revisions to those submitted by that entity.

(3) Daily averages rounded to nearest unit, with fewer samples at some stations than others, depending on staffing levels; calculations are based on sampled counted days only per raw data submitted, with resulting average daily occupancy shown.

# Metromover

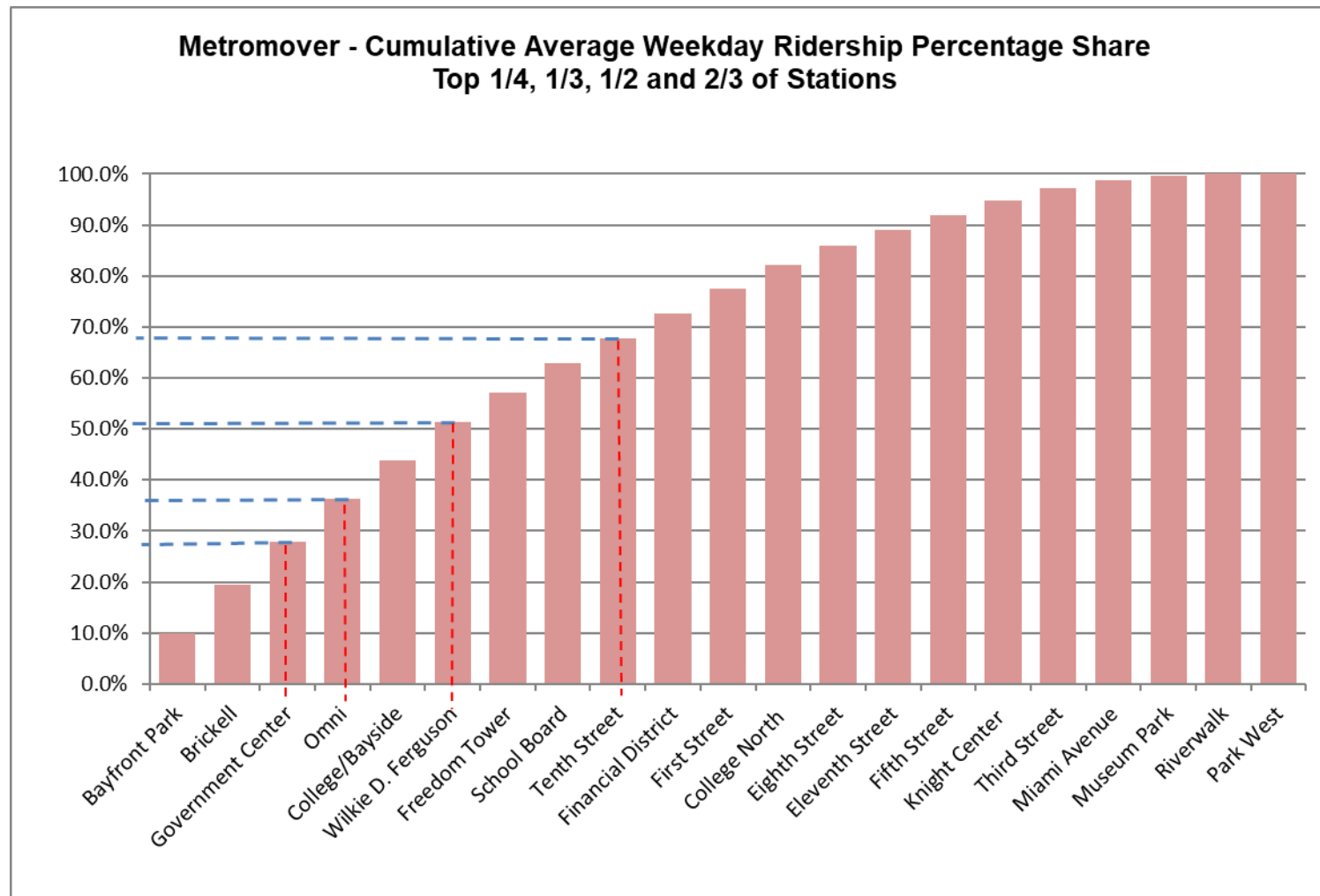


## METROMOVER MONTHLY AND AVERAGE DAILY BOARDINGS BY STATION

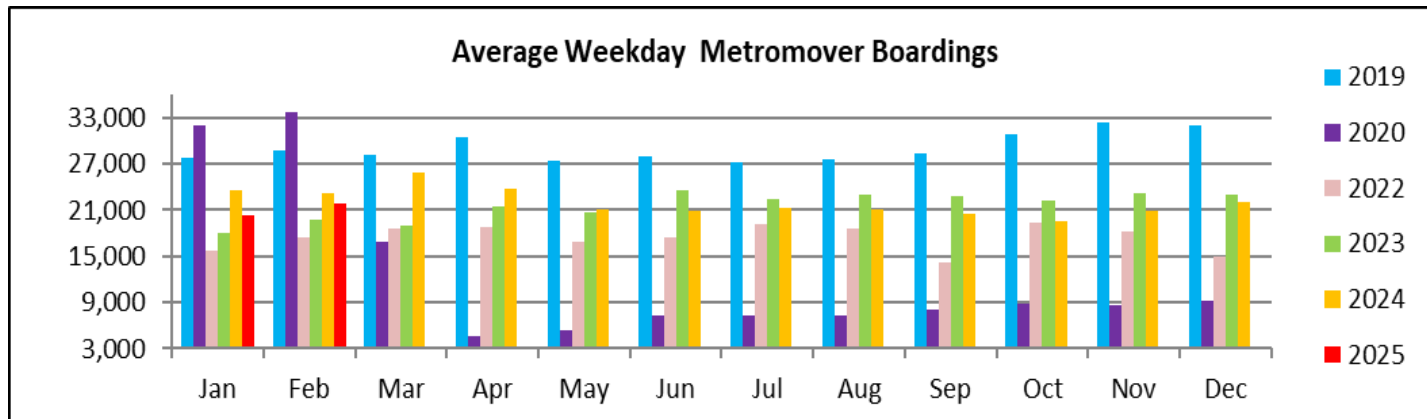
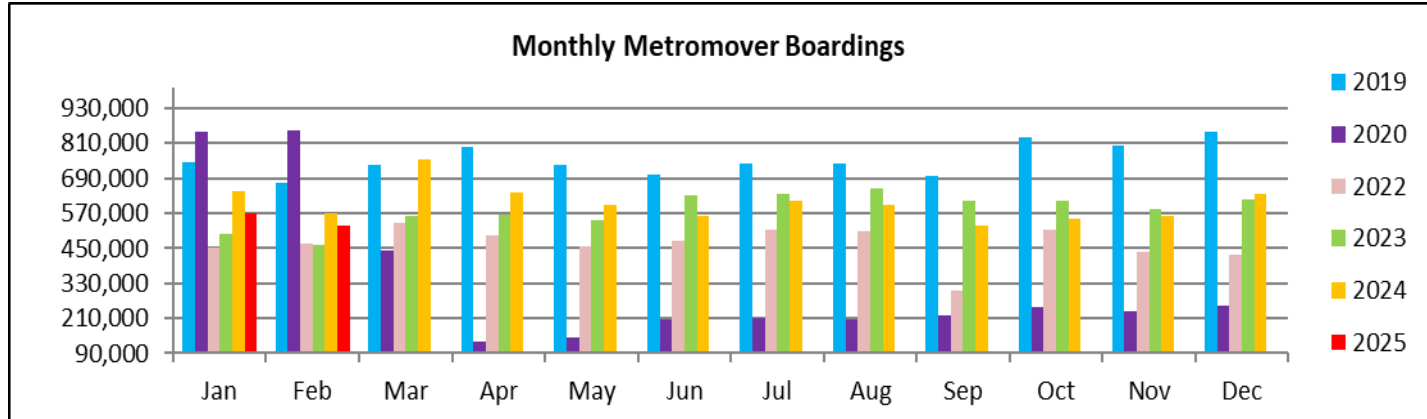
	Average Weekday	Average Weekday	Percent Change	Average Saturday	Average Saturday	Percent Change	Average Sunday	Average Sunday	Percent Change	Total Monthly	Total Monthly	Percent Change
STATIONS	Feb-25	Feb-24	25 vs 24	Feb-25	Feb-24	25 vs 24	Feb-25	Feb-24	25 vs 24	Feb-25	Feb-24	25 vs 24
School Board	1,237	1,252	-1.2%	776	845	-8.2%	962	938	2.6%	31,534	33,432	-5.7%
Omni	1,846	1,991	-7.3%	1,366	1,561	-12.5%	1,597	1,408	13.4%	48,237	53,330	-9.5%
Museum Park	192	364	-47.2%	226	569	-60.3%	212	506	-58.0%	5,631	12,128	-53.6%
Eleventh Street	685	335	104.5%	445	296	50.4%	506	297	70.5%	17,444	9,402	85.5%
Park West (*)		596			490			530			16,490	
Freedom Tower	1,276			1,013			1,122			34,002		
Government Center (*)	1,863	2,242	-16.9%	1,625	1,875	-13.3%	2,795	1,363	105.1%	10,010	21,177	-52.7%
Miami Avenue	335	314	6.7%	238	198	19.9%	409	229	78.4%	9,252	6,912	33.9%
Third Street	557	524	6.2%	519	508	2.2%	376	478	-21.3%	14,630	14,826	-1.3%
Knight Center	611	537	13.9%	287	258	11.5%	334	253	32.1%	14,461	13,151	10.0%
Bayfront Park	2,155	2,122	1.6%	1,431	1,385	3.3%	2,791	1,275	118.8%	59,548	54,635	9.0%
First Street	1,073	1,136	-5.5%	758	832	-8.8%	1,196	880	35.9%	29,047	30,644	-5.2%
College/Bayside	1,656	1,450	14.2%	1,173	1,161	1.1%	1,450	1,188	22.1%	43,273	39,763	8.8%
College North	1,029	1,090	-5.6%	439	456	-3.9%	607	441	37.7%	24,234	26,026	-6.9%
Wilkie D. Ferguson	1,638	1,459	12.3%	775	863	-10.2%	997	778	28.1%	39,407	36,908	6.8%
Riverwalk (*)	79	821	-90.4%	105	477	-78.1%	64	487	-87.0%	2,187	20,948	-89.6%
Fifth Street	631	644	-2.0%	353	426	-17.1%	420	404	4.0%	15,536	16,687	-6.9%
Eighth Street	806	1,979	-59.3%	676	1,472	-54.1%	686	1,381	-50.3%	21,490	52,939	-59.4%
Tenth Street	1,084	1,122	-3.4%	632	692	-8.7%	848	730	16.3%	27,403	28,998	-5.5%
Brickell	2,109	2,444	-13.7%	1,153	1,326	-13.0%	1,519	1,303	16.5%	52,282	61,165	-14.5%
Financial District	1,082	850	27.2%	554	390	42.1%	778	391	98.7%	26,590	20,681	28.6%
<b>TOTAL</b>	<b>21,943</b>	<b>23,272</b>	<b>-5.7%</b>	<b>14,541</b>	<b>16,078</b>	<b>-9.6%</b>	<b>19,665</b>	<b>15,256</b>	<b>28.9%</b>	<b>526,198</b>	<b>570,242</b>	<b>-7.7%</b>

(\*) Some Metromover stations were closed for construction during the CY 2023-2025 period, due to construction work; associated were numerous power and data outages, including on weekends

## METROMOVER CUMULATIVE PERCENTAGE RIDERSHIP SHARE



# **TOTAL MONTHLY AND AVERAGE WEEKDAY RIDERSHIP YEAR OVER YEAR COMPARISON CHARTS – METROMOVER**



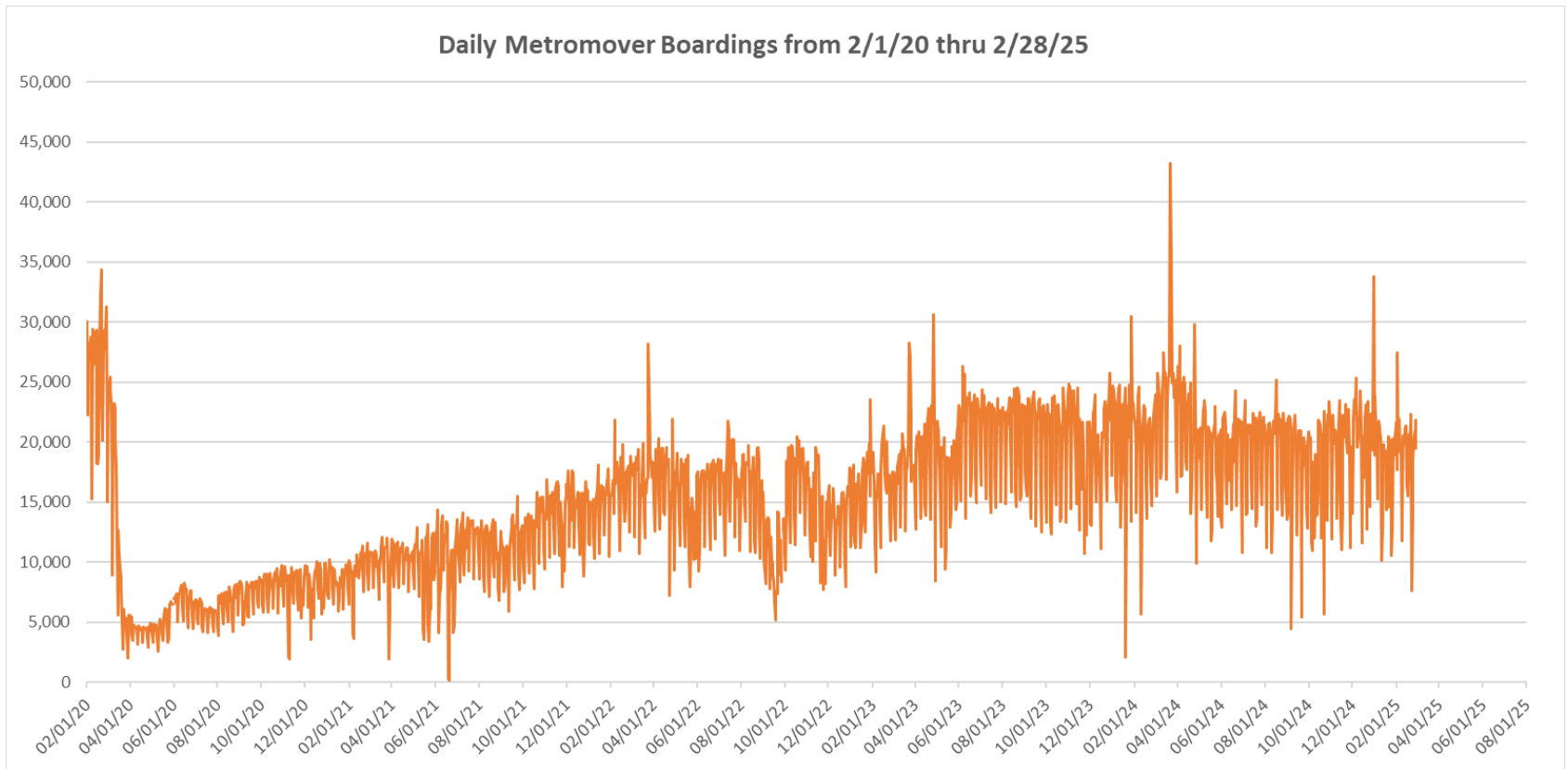
**“TOP 5 / BOTTOM 5” MOVER STATIONS AVERAGE WEEKDAY RIDERSHIP PERFORMANCE  
YEAR OVER YEAR COMPARISONS**

<b>Station</b>	<b>Feb-25</b>	<b>Feb-24</b>	<b>Absolute Delta (1)</b>	<b>Percent Delta</b>
Eleventh Street	685	335	350	104.5%
Financial District	1,082	850	231	27.2%
College/Bayside	1,656	1,450	206	14.2%
Wilkie D. Ferguson	1,638	1,459	179	12.3%
Knight Center	611	537	75	13.9%
Eighth Street	806	1,979	-1,173	-59.3%
Riverwalk	79	821	-742	-90.4%
Government Center	1,863	2,242	-379	-16.9%
Brickell	2,109	2,444	-335	-13.7%
Museum Park	192	364	-172	-47.2%

(1) Averages rounded to the nearest boarding.



## DAILY METROMOVER RIDERSHIP SINCE FEBRUARY 1, 2020



- (1) There was no Metrobus, Metrorail and Metromover service on 5/31/20, as a safety precaution, and no service for any of the four modes on 9/28/22 as a result of Hurricane Ian.
- (2) The dip at the start of the second week of Nov-20 is due to Hurricane Eta; these are *raw data* from the UTA contractor APC system. Other more recent dips are due to various station closures (mostly on weekends) for system maintenance purposes. Pronounced peaks are associated with major events in Downtown Miami, such as the Corporate Run and Ultramusic Festival.
- (3) Periodic (weekly) variations are prominent, since weekday ridership is almost always significantly higher than weekend or holiday ridership; a few low-count days are due to system outages, often associated with construction or renovation work, including on weekends.

## Special Transportation Services

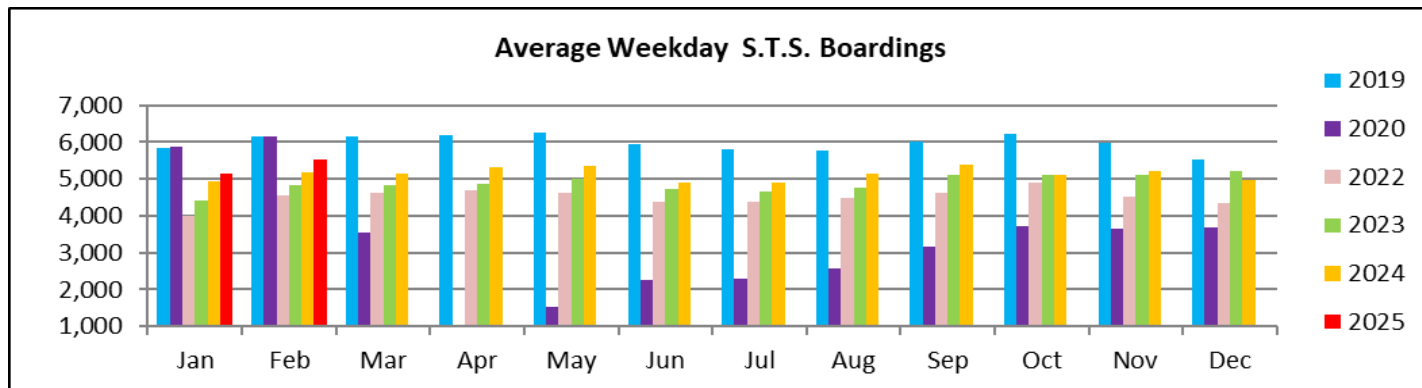
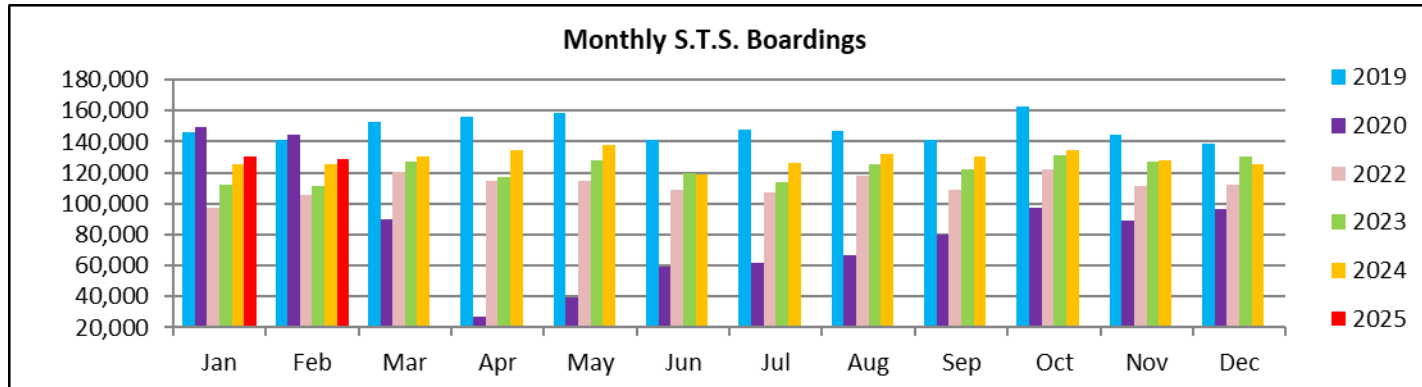


## STS MONTHLY AND AVERAGE DAILY BOARDINGS February 2025

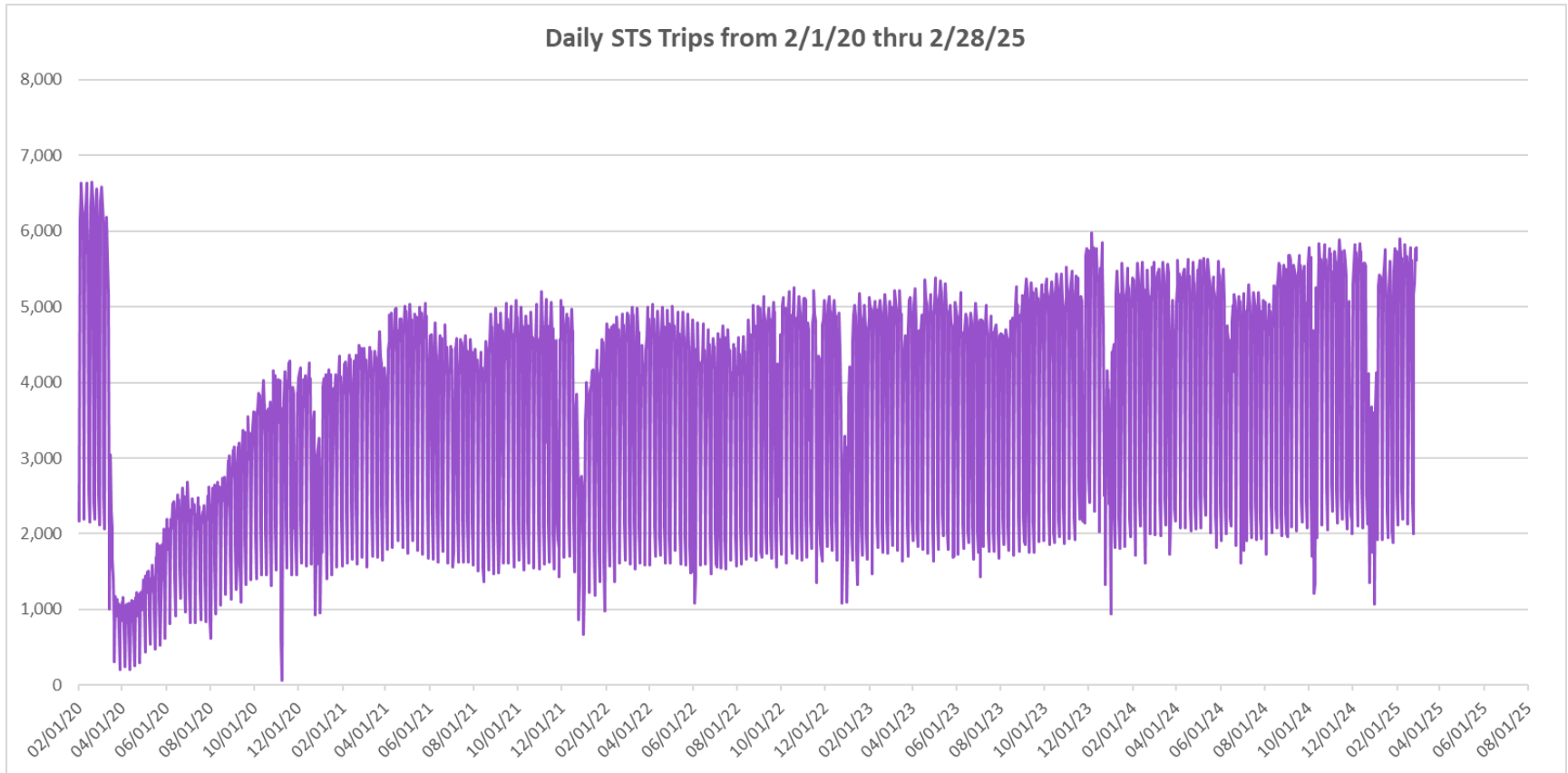
Measure	timeline	Ambulatory	Wheelchair	Total Clients (*)
<b>Average Weekday</b>	Feb-25	4,620	893	<b>5,512</b>
<b>Average Saturday</b>	Feb-25	2,061	432	<b>2,494</b>
<b>Average Sunday</b>	Feb-25	1,742	385	<b>2,127</b>
<b>Total Monthly</b>	<b>Feb-25</b>	<b>107,603</b>	<b>21,122</b>	<b>128,725</b>
<b>Average Weekday</b>	Feb-24	4,364	817	<b>5,181</b>
<b>Average Saturday</b>	Feb-24	2,013	366	<b>2,378</b>
<b>Average Sunday</b>	Feb-24	1,527	328	<b>1,855</b>
<b>Total Monthly</b>	<b>Feb-24</b>	<b>105,806</b>	<b>19,926</b>	<b>125,732</b>
<b>Average Weekday</b>	Feb-23	4,031	797	<b>4,827</b>
<b>Average Saturday</b>	Feb-23	1,728	375	<b>2,103</b>
<b>Average Sunday</b>	Feb-23	1,425	274	<b>1,699</b>
<b>Total Monthly</b>	<b>Feb-23</b>	<b>93,220</b>	<b>18,528</b>	<b>111,748</b>
<b>% Change Current vs. February 2024 Weekday</b>		5.9%	9.3%	6.4%
<b>% Change Current vs. February 2024 Saturday</b>		2.4%	18.2%	4.8%
<b>% Change Current vs. February 2024 Sunday</b>		14.1%	17.3%	14.6%
<b>% Change Current vs. February 2024 Month Total</b>		<b>1.7%</b>	<b>6.0%</b>	<b>2.4%</b>
<b>% Change Current vs. February 2023 Weekday</b>		14.6%	12.1%	14.2%
<b>% Change Current vs. February 2023 Saturday</b>		19.3%	15.2%	18.6%
<b>% Change Current vs. February 2023 Sunday</b>		22.2%	40.8%	25.2%
<b>% Change Current vs. February 2023 Month Total</b>		<b>15.4%</b>	<b>14.0%</b>	<b>15.2%</b>

(\*) Trip count data provided by STS contractor.

# **TOTAL MONTHLY AND AVERAGE WEEKDAY RIDERSHIP YEAR OVER YEAR COMPARISON CHARTS – SPECIAL TRANSPORTATION SERVICES (S.T.S.)**

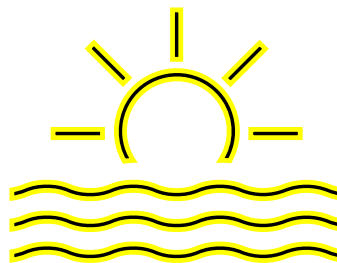


## DAILY STS RIDERSHIP SINCE FEBRUARY 1, 2020



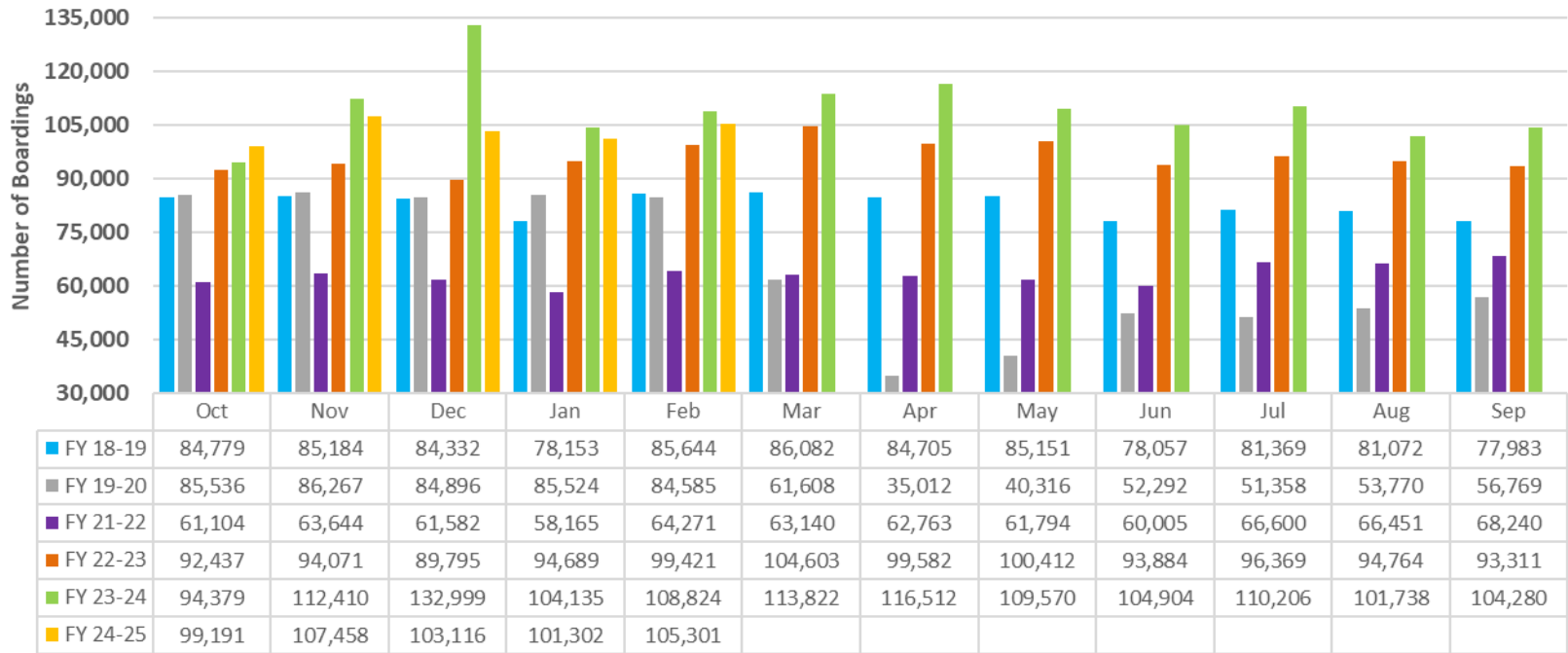
- (1) There was no service (for any of the four modes) on 9/28/22 as a result of Hurricane Ian.
- (2) The dip at the start of the second week of Nov-20 is due to Hurricane Eta; the isolated peak in Dec-23 is due to the free fares launch of the Better Bus Network.
- (3) Periodic (weekly) variations are prominent, since weekday ridership is almost always significantly higher than weekend or holiday ridership.

## Ridership Seasonality



## RIDERSHIP SEASONALITY – AVERAGE WEEKEND RIDERSHIP BY MONTH AND FISCAL YEAR FOR METROBUS

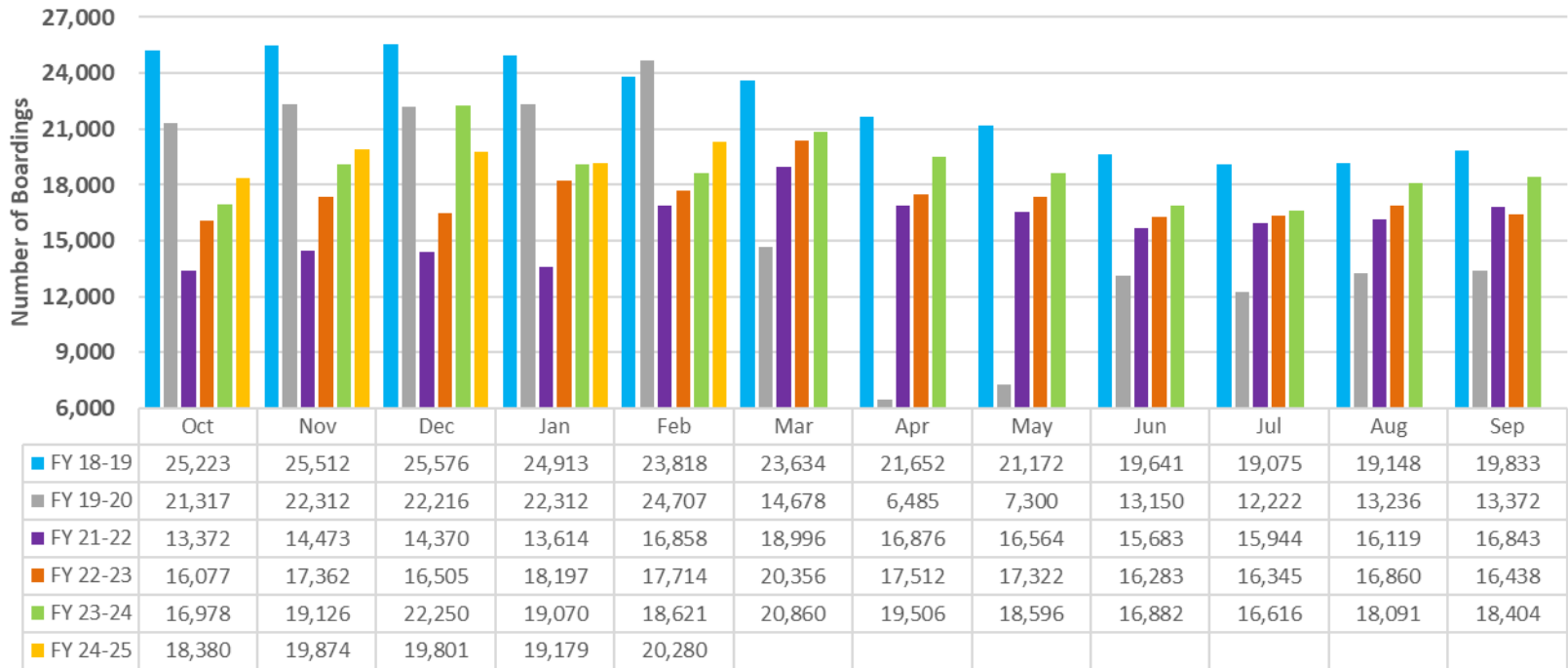
**FY 19-25 Metrobus Average Weekend Ridership (\*)**



(\*) Note: here, average weekend ridership for each month is defined as the average of average Saturday and average Sunday ridership; the pronounced increase beginning Nov-23 can be attributed to the launch of the Better Bus Network and the attendant free fares, which ended on New Year's Day 2024; the large jump from FY 21-22 to FY 22-23 can be largely attributed to the 10/01/22 switchover from farebox to APC reporting.

## RIDERSHIP SEASONALITY – AVERAGE WEEKEND RIDERSHIP BY MONTH AND FISCAL YEAR FOR METRORAIL

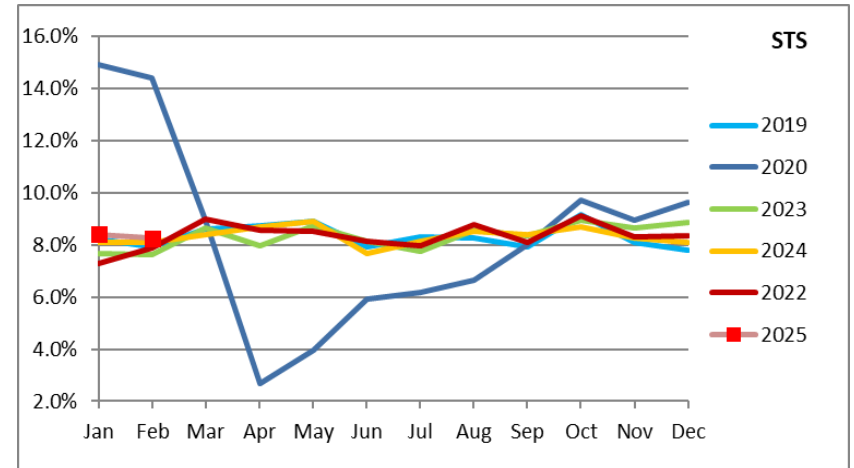
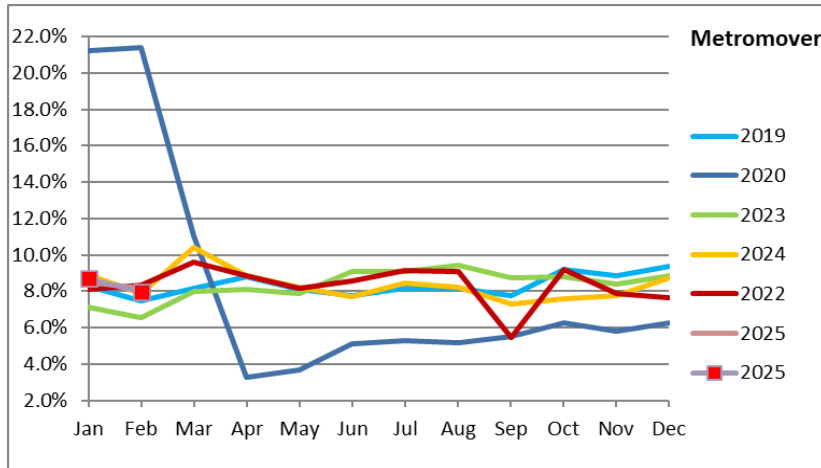
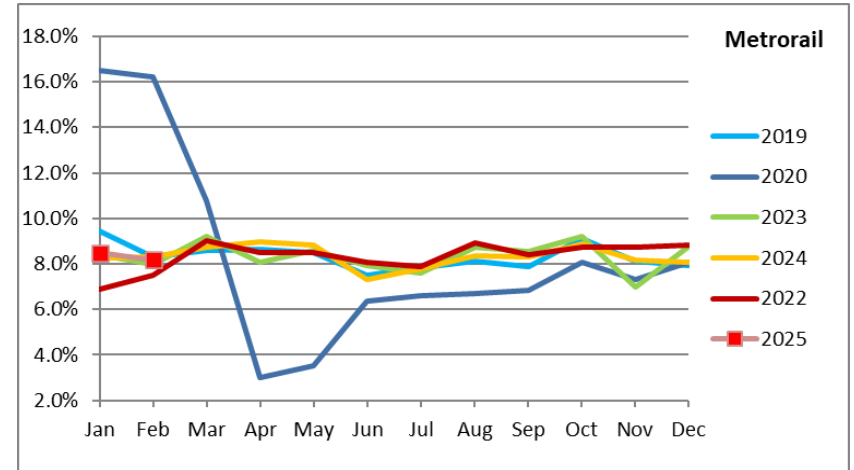
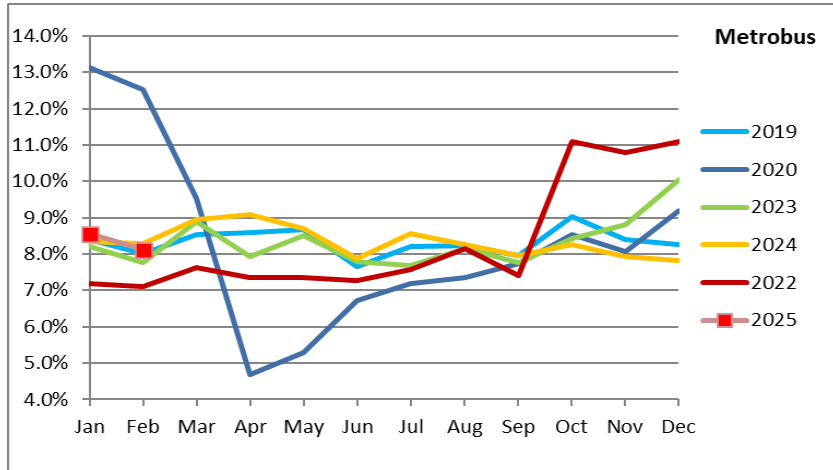
**FY 19-25 Metrorail Average Weekend Ridership (\*)**



(\*) Note: here, average weekend ridership for each month is defined as the average of average Saturday and average Sunday ridership; the pronounced increase beginning Nov-23 can be attributed to the launch of the Better Bus Network and the attendant free fares, which ended on New Year's Day 2024.

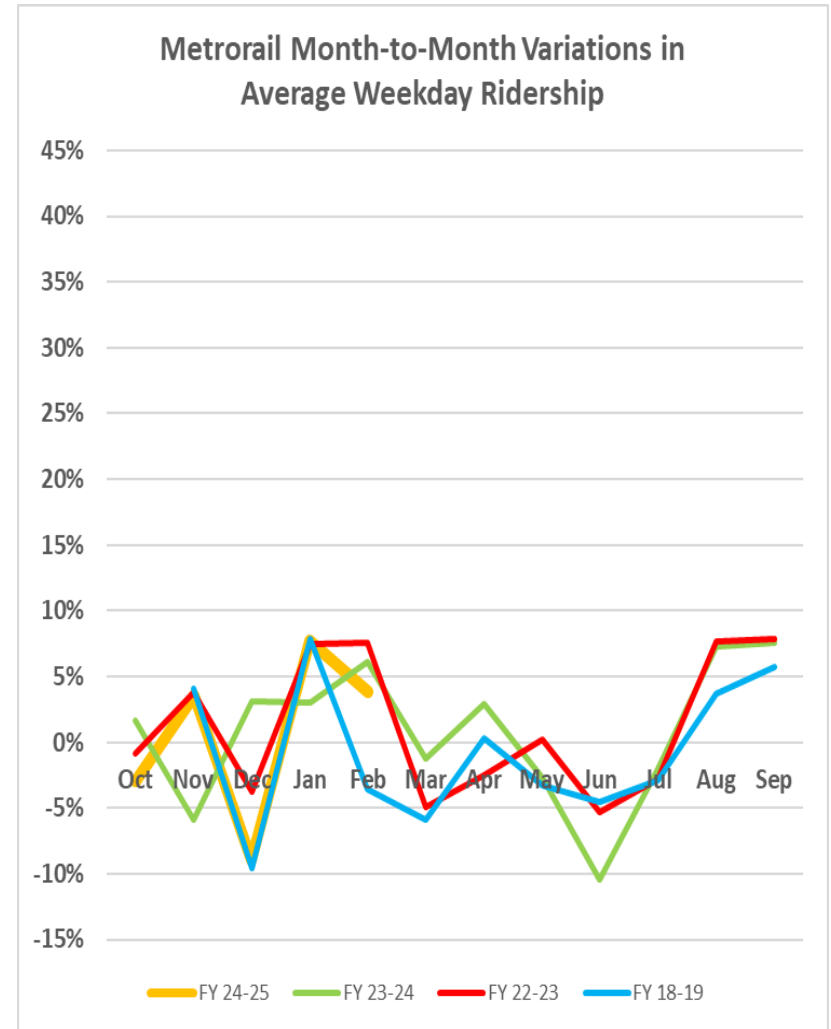
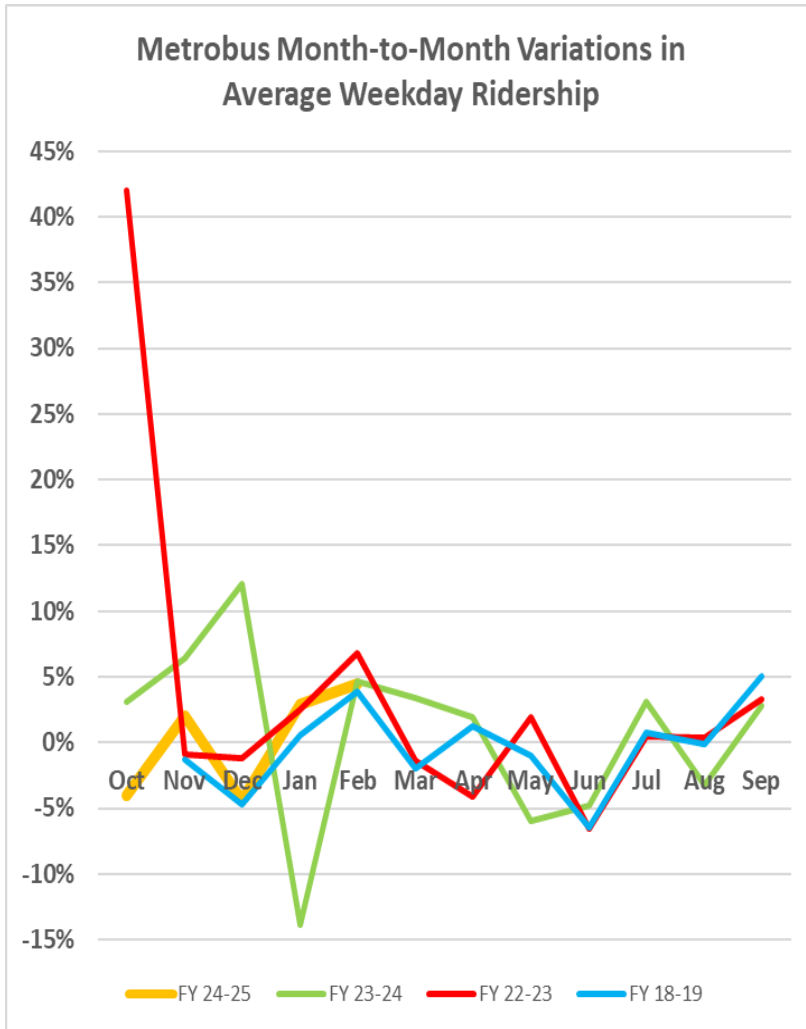


## RIDERSHIP SEASONALITY – PERCENT SHARE OF TOTAL RIDERSHIP BY MONTH AND CALENDAR YEAR FOR EACH MODE



Note: the prominent dip seen in the beginning in the spring of 2020 is due to the SARS-CoV-2 pandemic. The sharp increase in Metrobus percentage share beginning October 2022 is due to the switchover from farebox to automatic passenger counter reporting. The pronounced rise beginning November 2023 for Metrobus and Metrorail can be attributed to the launch of the Better Bus Network and the attendant free fares, which ended on New Year's Day 2024.

## RIDERSHIP VOLATILITY – MONTH-TO-MONTH AVERAGE WEEKDAY RIDERSHIP PERCENTAGE CHANGES FOR METROBUS AND METRORAIL



Note: The pronounced rise beginning Nov-23 for Metrobus and Metrorail can be attributed to the launch of the Better Bus Network and the attendant free fares, which ended on New Year's Day 2024, leading to the subsequent pronounced dip. For Metrobus, the very high peak at the start of FY 22-23 is due to the switchover from farebox to automatic passenger counter ridership reporting at the very beginning of that fiscal year (10/01/22).