

THE UNDERLINE PHASE II LANDSCAPE PRESENTATION



WEBINAR Q&A GUIDELINES

- Microphones remain muted unless it is your turn to speak, we will unmute your microphone at that time
- Raise your hand to ask a question.
- If you dialed in, please press *9
- To ensure others have a chance to speak, please keep questions concise and on topic.
- If we did not get to your question, or you have additional questions, please email theunderline@miamidade.gov

**THE UNDERLINE
WILL BE A 10 MILE MULTI-MODAL CORRIDOR,
MIAMI'S SIGNATURE LINEAR PARK
AND URBAN TRAIL IMPROVING REGIONAL
SAFETY, MOBILITY, HEALTH,
RESILIENCE AND CONNECTIVITY**



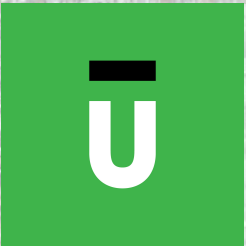
3 PHASES
10 MILES
8 STATIONS, 1 LINE



**THE UNDERLINE PHASE 2 IS 2.14 MILES LONG
FROM CORAL WAY TO SW 19TH AVENUE.**

**TWO PUBLIC MEETINGS WERE COMPLETED WITH
COMMUNITY PRIORITIES OF 1. SAFETY; 2.
NATURE; 3. COMMUNITY PROGRAMS**

**CONSTRUCTION BEGAN FALL 2021 AND WILL BE
COMPLETE FALL 2023.**



PHASE II
2.14 MILES, 3 AMENITY AREAS
TRAIL AND PARK OPEN 2023





AMENITIES: SW 15TH ROAD & SW 1ST AVENUE, NATURE PLAY





**AMENITIES:
SW 15TH ROAD &
SW 1ST AVENUE, NATURE PLAY**





AMENITIES: SW 15TH ROAD & SW 1ST AVENUE, NATURE PLAY





VIZCAYA STATION PLAZA





VIZCAYA STATION PLAZA





VIZCAYA STATION PLAZA





17TH AVENUE BIOSWALE





17TH AVENUE BIOSWALE





17TH AVENUE BIOSWALE



SAFETY, INFRASTRUCTURE AND PLANTING

- **SAFETY:** Ensure line of sight for cyclists and pedestrians as required by MUTCD. Improvements at all crossings.
- **PATHS INSTALLATION:** Installation of 2 separated paths, 8' wide for pedestrian, 10' wide for cyclist plus buffer.
- **LIGHTING INSTALLATION:** LED, dark sky lighting.
- **DRAINAGE:** Infrastructure for stormwater drainage.
- **FPL UNDERGROUNDING:** Undergrounding of high power transmission lines.
- **EXISTING TREE CONSIDERATION:** Path alignment. Evaluate health of tree and potential conflicts with cyclists and pedestrians. Setback requirements for Metrorail and US1 and existing roads, root system



INTERSECTION IMPROVEMENTS

SW 13TH ST TO SW 19TH AVE



SW 13th ST

SW 15th RD

SW 25th RD
SW 26th RD

SW 16th AVE

SW 17th AVE

SW 19th AVE

Completed by FDOT 2020



PHASE II PLANTING STRATEGY

63% of existing trees remain (589 of 930)
Phase 2 total existing and new trees/palms = 1,525,
a **64%** increase over existing conditions

1. NATIVE PLANTING

- 100,000 new native plants & trees to be added from Pine Rockland, Hardwood Hammock and Pollinator species

2. EXISTING AND NEW TREES

- 537 trees and 399 palms to be added - **936**
- All trees evaluated by a certified arborist
- Existing Trees - 930
- Existing trees to remain - 481
- Trees to be relocated -108
- Trees to be removed by The Underline 272





SAFETY: ROOT INTRUSION PATH DAMAGE, CYCLIST & PEDESTRIAN FALL HAZARD



Roots overgrown and encroaching path



Roots cracking path



Roots cracking path



TREE HEALTH CRITERIA: CANOPY, TRUNK AND ROOT SYSTEM



Canopy Die Back



Circling Roots



Trunk Decay



Leaning Trunks/
Asymmetrical Canopy



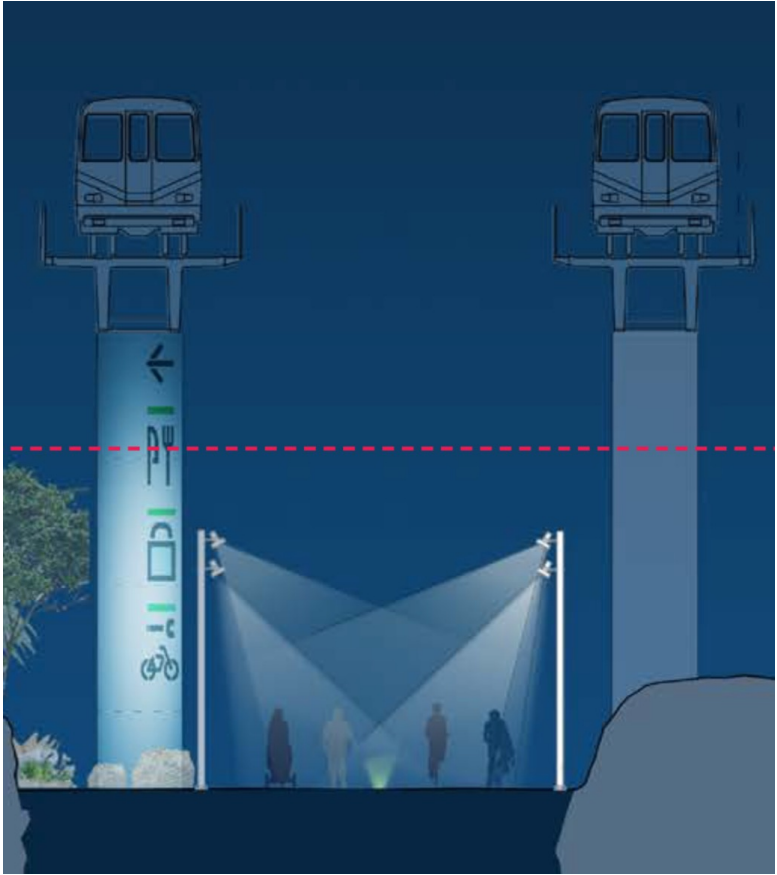
NEW INFRASTRUCTURE: UNDERGROUNDING POWER LINES, DRAINAGE & LIGHTING



FPL Transmission Lines



Drainage

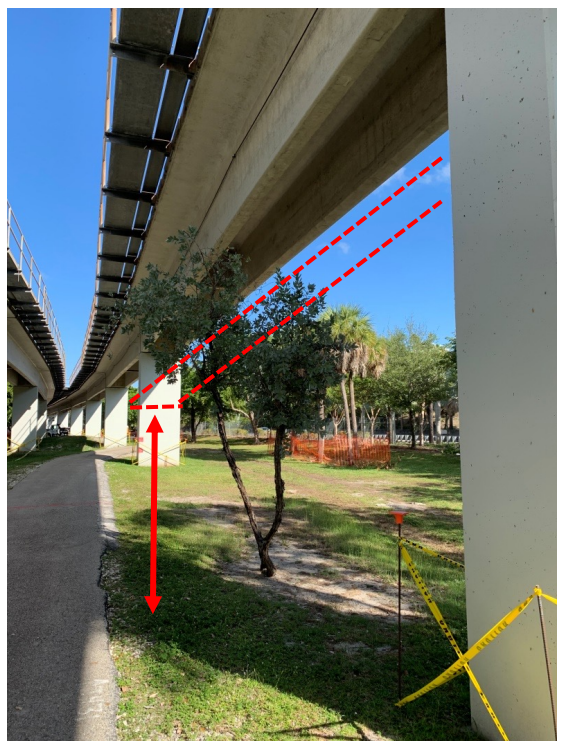
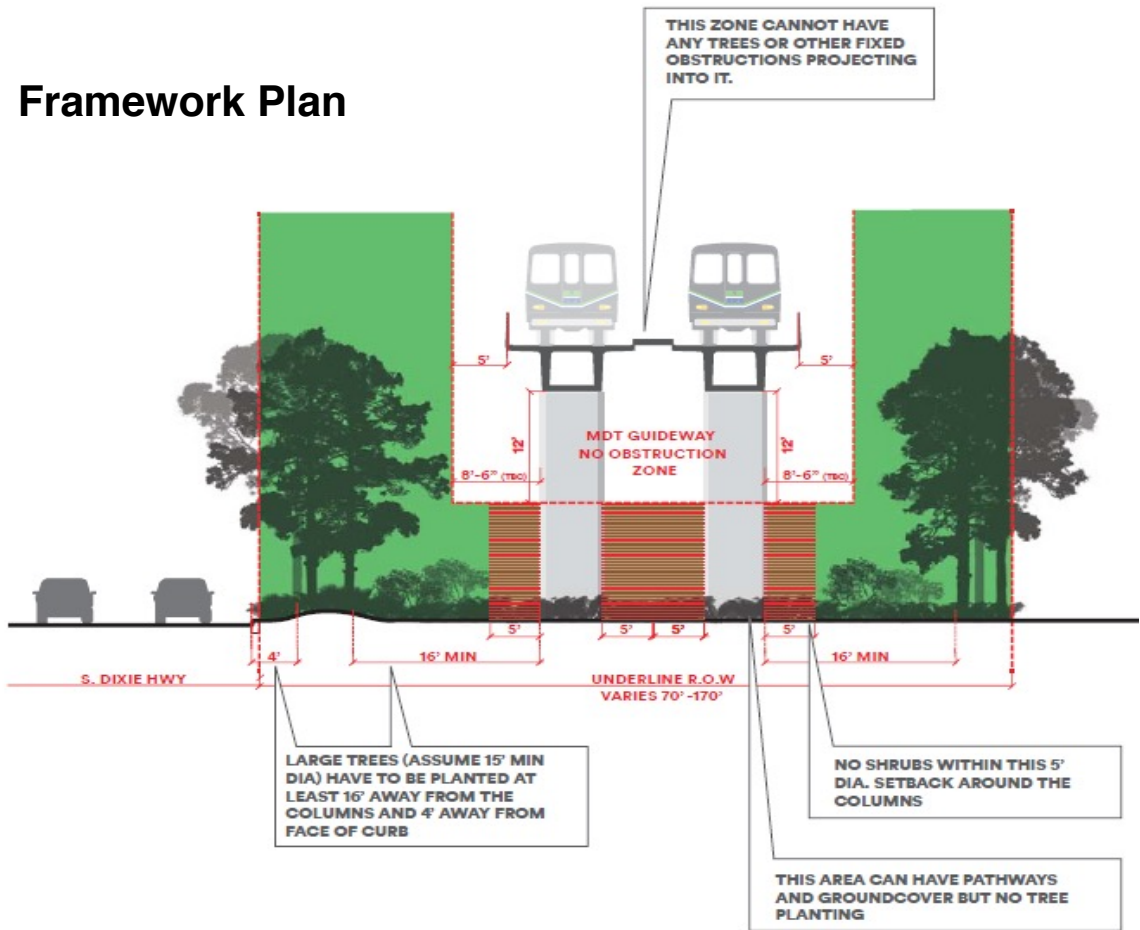


Lighting



REGULATORY & SAFETY REQUIREMENTS: TREE SETBACK CONDITIONS FROM METRORAIL GUIDEWAY

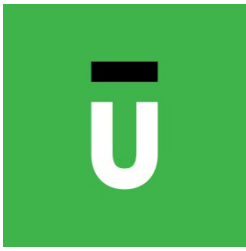
Framework Plan



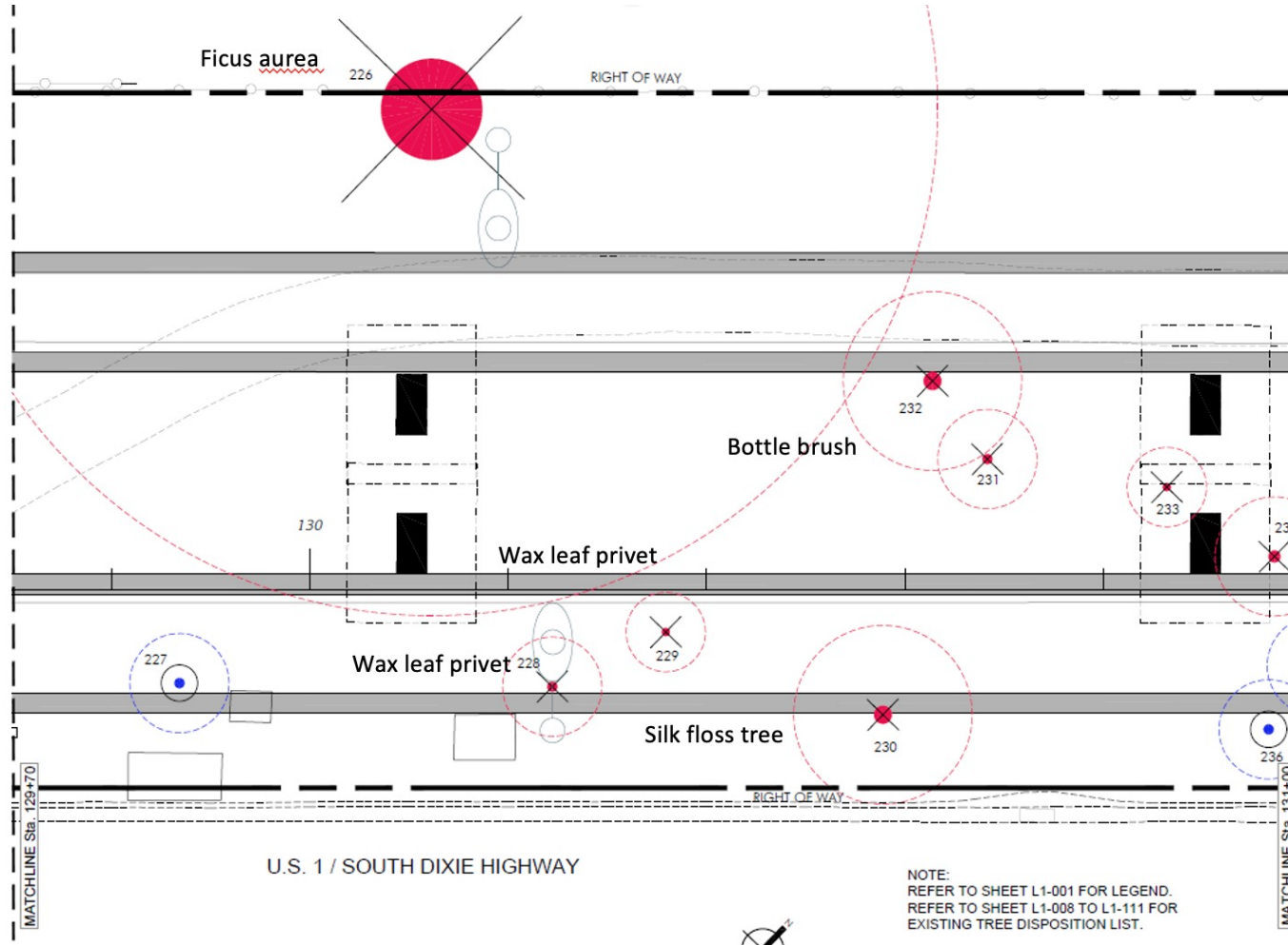
5' Vertical Clearance

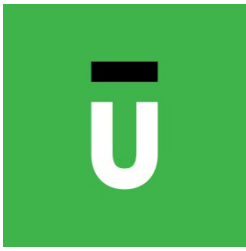


5' Horizontal Clearance

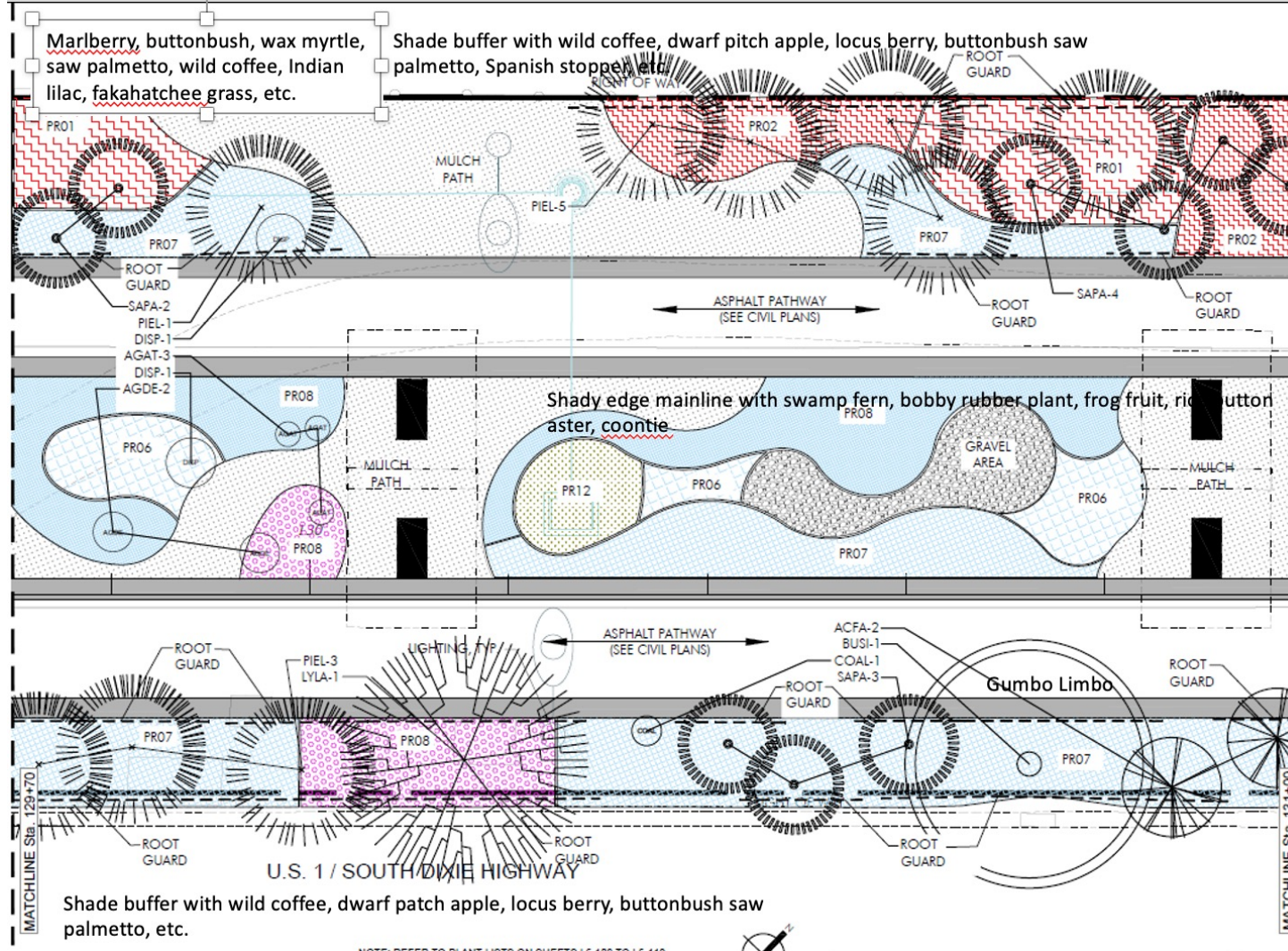


PHASE II EXISTING CONDITION



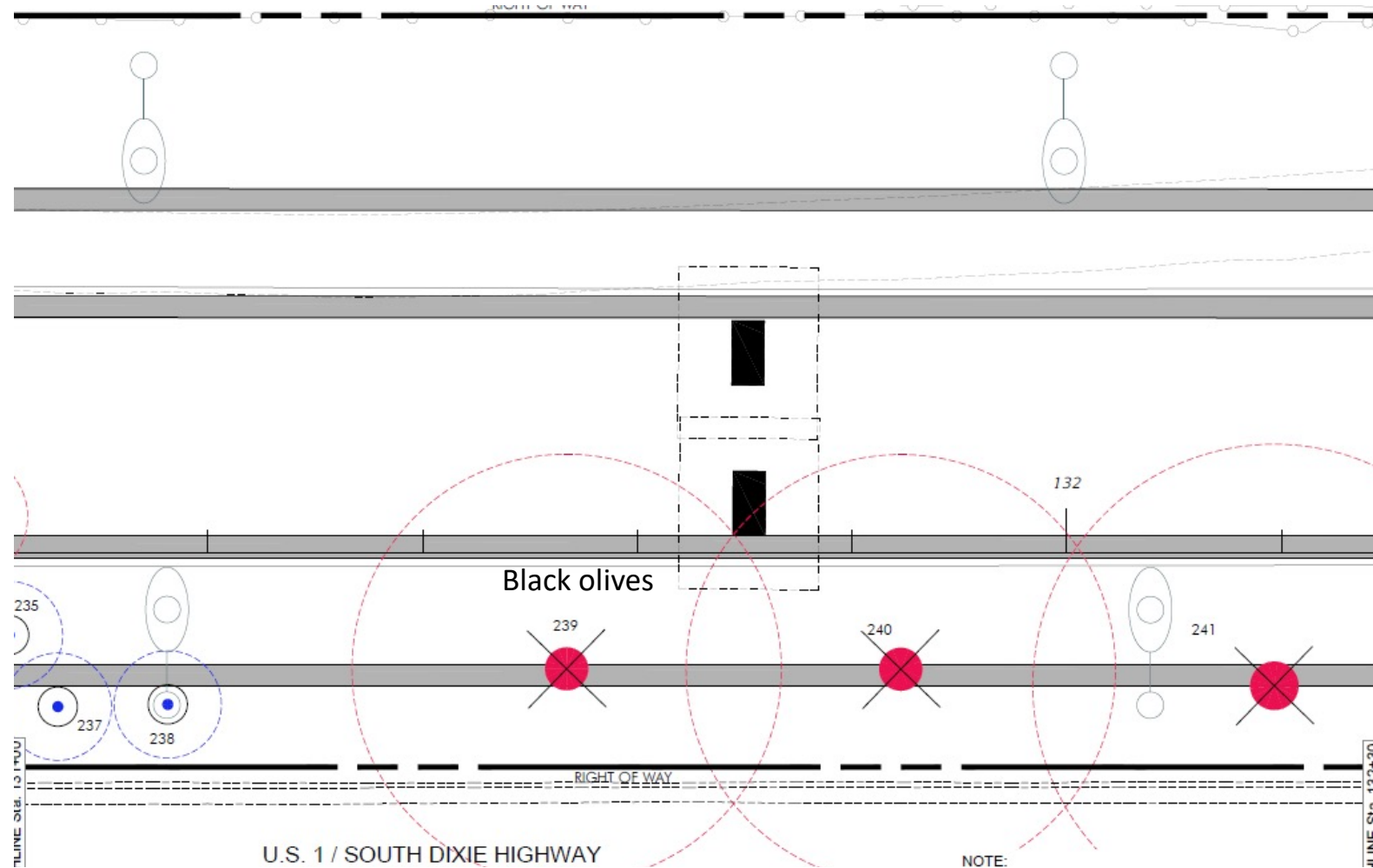


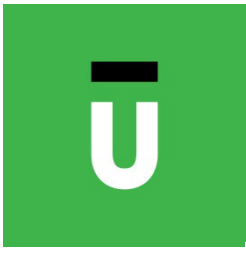
PHASE II PLANTING STRATEGY AFTER



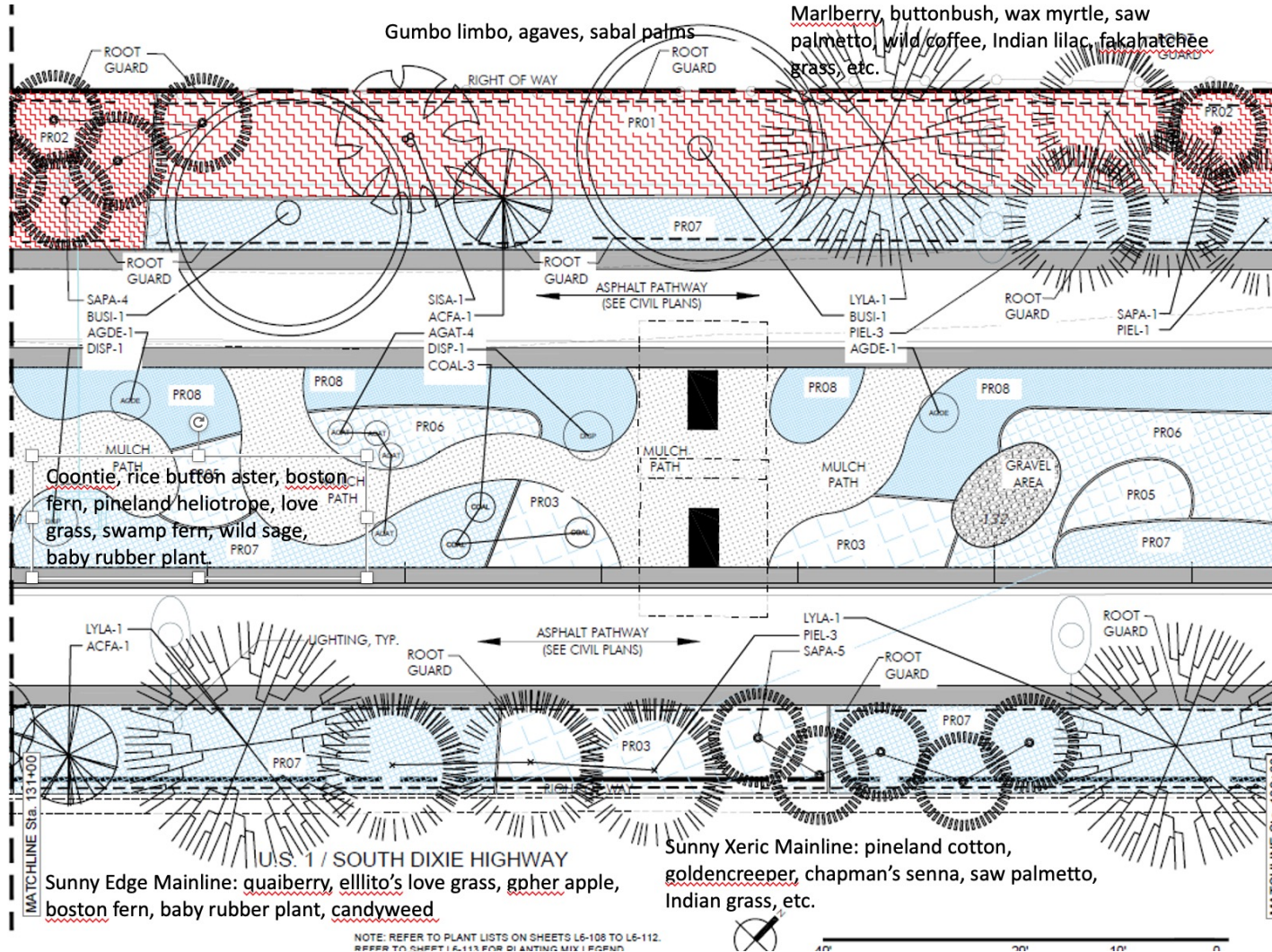


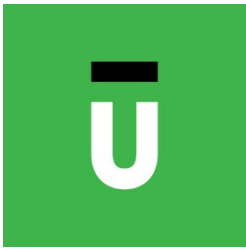
PHASE II EXISTING CONDITION



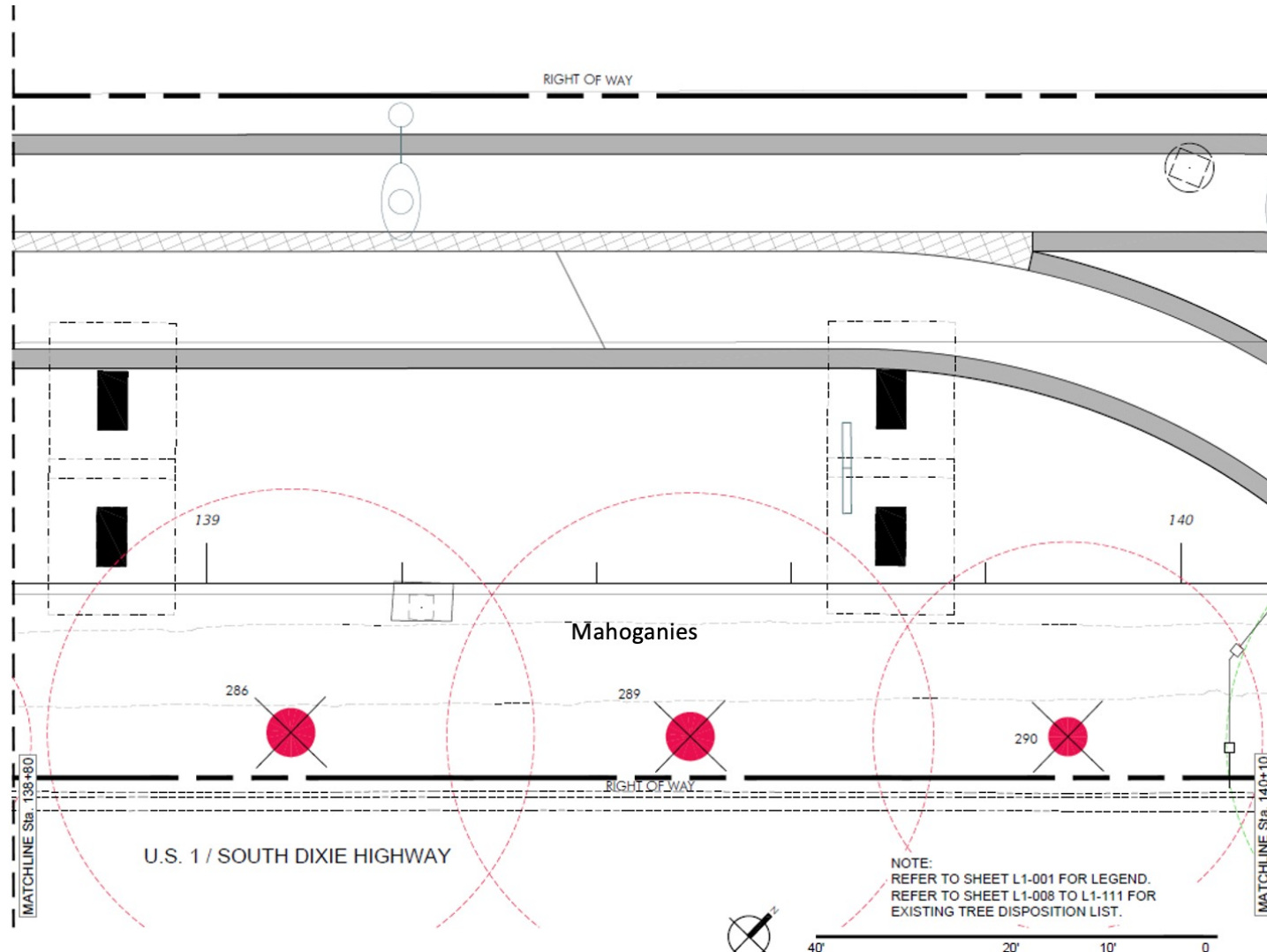


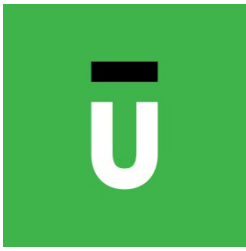
PHASE II PLANTING STRATEGY AFTER



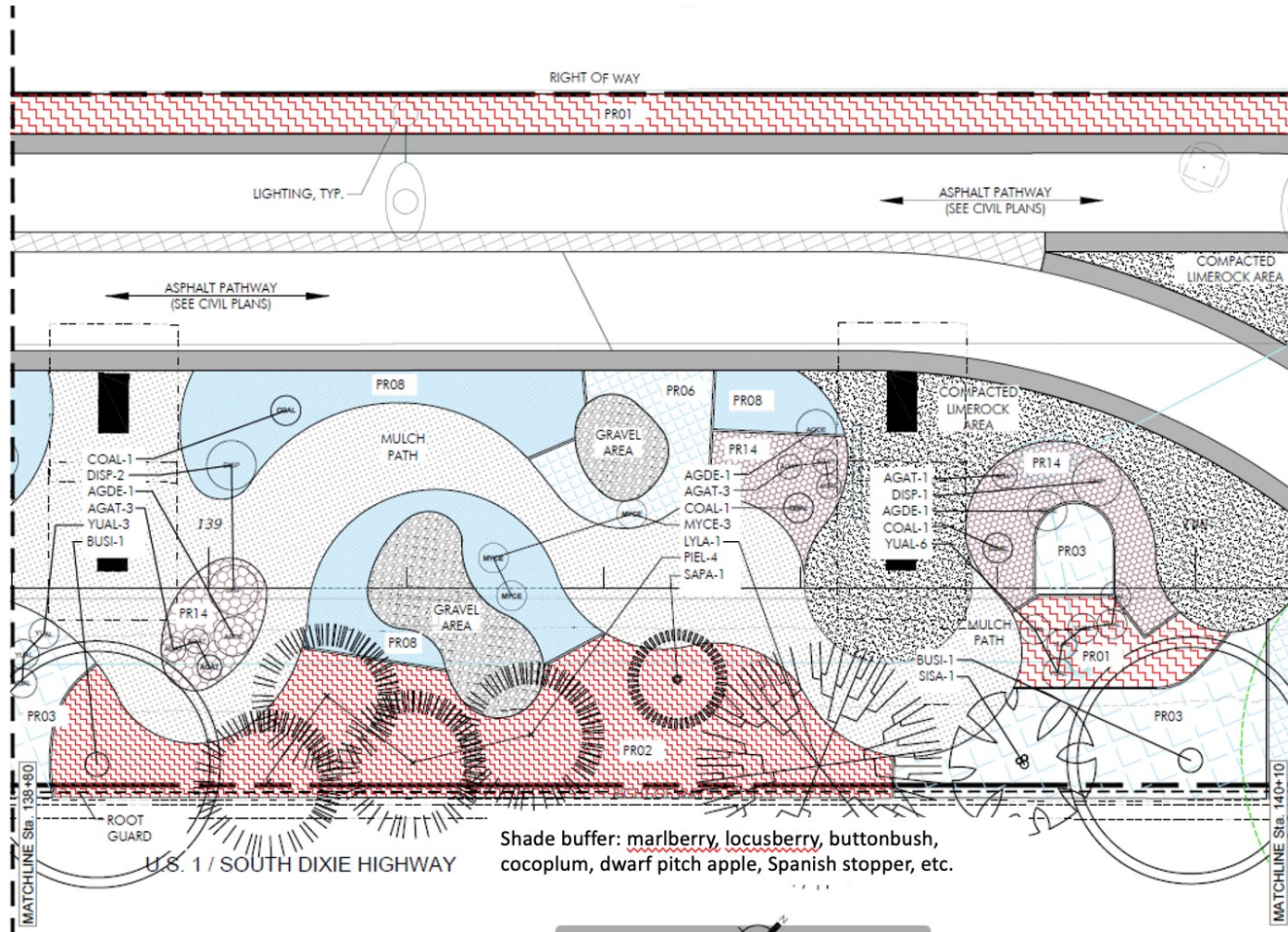


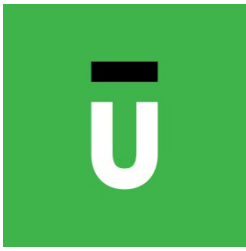
PHASE II EXISTING CONDITION



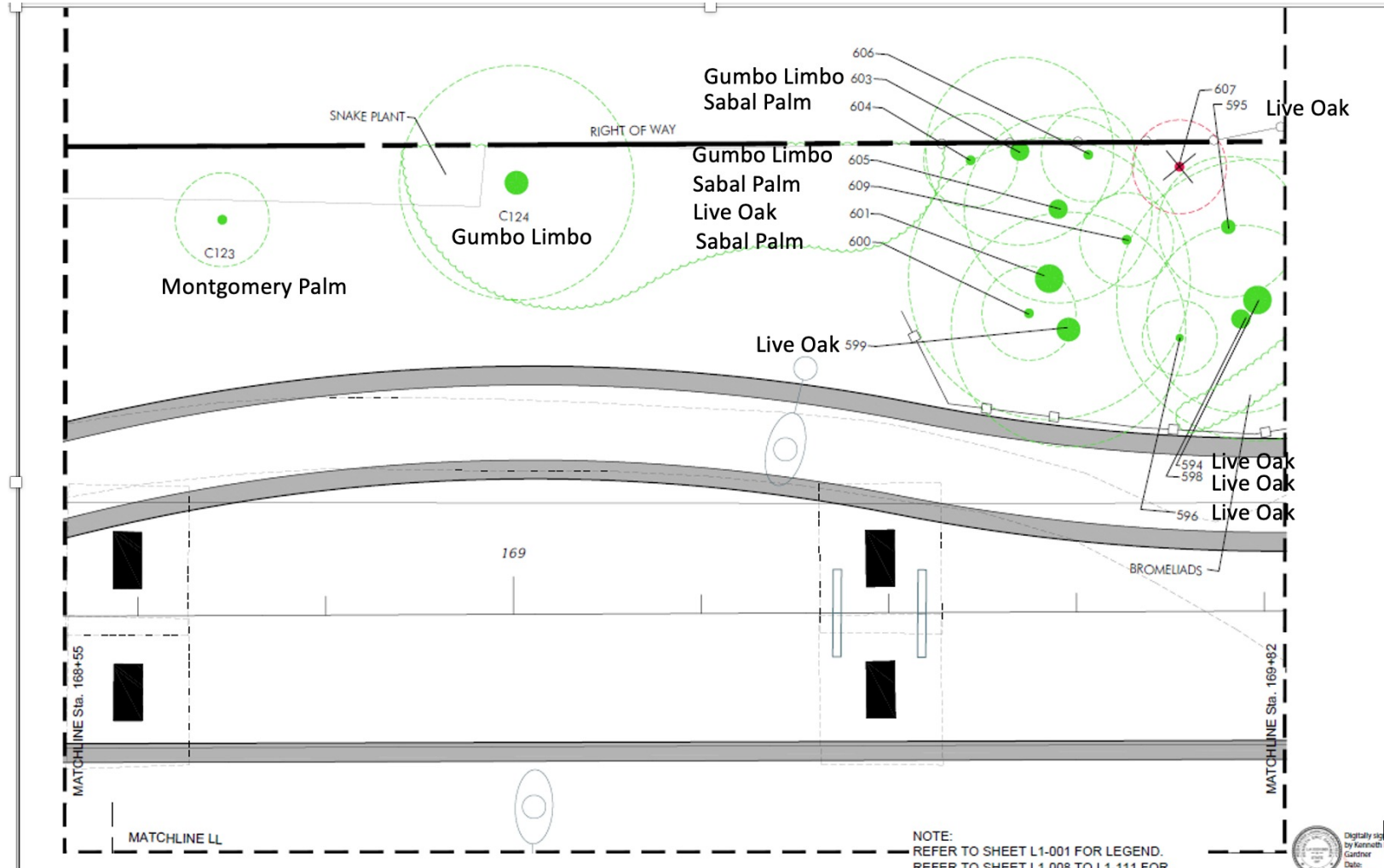


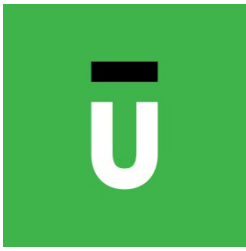
PHASE II PLANTING STRATEGY AFTER



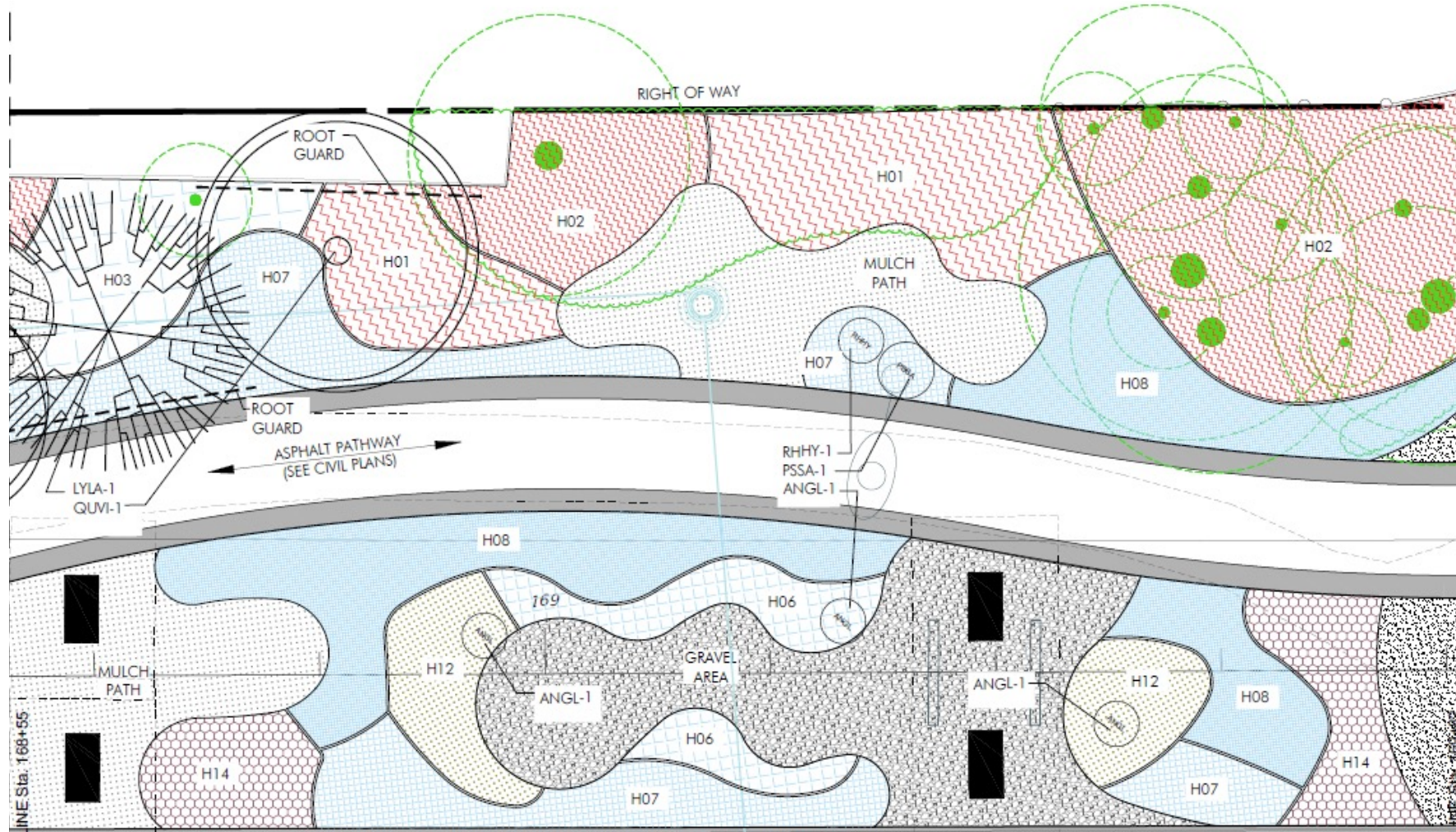


PHASE II EXISTING CONDITION





PHASE II PLANTING STRATEGY AFTER





COMMUNICATIONS

PUBLIC MEETINGS & PRESENTATIONS

Completed:

- During master plan, Phase 1 & 2 over 100 public meetings, presentations and community input sessions.
- In Phase 2 there were 2 virtual public meetings attending by over 100 people at each.

In the Works/Future:

- Phase 2, tonight's meeting with neighbors in Silver Bluff, Roads, Vizcaya and Shenandoah to review tree replacement (types and locations)
- Phase 3 there will be three public meetings, 30%, 60% and one dedicated to trees and landscaping.
- Friends of The Underline will update City of Miami commission and staff on a regular basis.

CONSTRUCTION ADVISORIES

Posted at MiamiDade.gov and theunderline.org

SIGNAGE

Completed:

- County construction signs near Vizcaya and SW 15th Rd.
- Recently added sandwich boards along SW 1st Avenue.

Future:

- In Phase 3 (SW 19th Avenue to Douglas Rd City of Miami) there will be construction fences and related signage roughly every block.
- Tree tagging in advance of removal or relocation.





PHASE II OPERATIONS & MAINTENANCE

Governed by an agreement with Miami Dade County, The Underline Conservancy is responsible for all maintenance, operations and programming of The Underline and includes:

- Security
- Landscaping (maintenance and replacements)
- Porter Services
- Utilities (Water, power, trash, recycling, supplies, storage and rodent control)
- Programming (local to the community and neighborhood)

Phase I & II operations budget in FY 23/24 = \$4.7 million

Programming budget estimated \$500,000/yr.



WEBINAR Q&A GUIDELINES

- Microphones remain muted unless it is your turn to speak, we will unmute your microphone at that time
- Raise your hand to ask a question.
- If you dialed in, please press *9
- To ensure others have a chance to speak, please keep questions concise and on topic.
- If we did not get to your question, or you have additional questions, please email theunderline@miamidade.gov

The Underline

THANK YOU FOR YOUR INTEREST AND PARTICIPATION

**If we did not get to your question or you
have additional questions, please email
theunderline@miamidade.gov**

"The Brickells came
to the Miami River.
They opened the first
store, an Indian trading
post. They acquired
3 square miles of bay
front land running from
area of downtown
Miami to Coconut Grove."

William & Mary Brickell
Founders of Miami
and Fort Lauderdale
by Seth Brickell

C. 1874

**APPENDIX:
URBAN REFORESTATION
& REBUILDING NATIVE
ECOSYSTEMS**



PHASE II PLANTING STRATEGY

HAMMOCK COMMUNITY CANOPY INSPIRED BY THE TROPICAL HARDWOOD HAMMOCK

Adjacent to The Underline at SW 15th Road is Simpson Park Hammock, one of the last remaining remnants of the Brickell Hammock, which once covered much of the northern portion of The Underline. As the name indicates, tropical hardwood hammocks have a varied canopy of hardwood tropical trees, which range in size. The Hammock community will occur in portions of The Underline where the corridor is wide enough to give these trees room to grow.

TYPICAL CANOPY SPECIES



Quercus virginiana | southern live oak



Coccoloba diversifolia | pigeon-plum



Eugenia axillaris | white stopper



Eugenia foetida | Simpson's stopper



Krugiodendron ferreum | black ironwood



Lysiloma latissiliquum | wild tamarind





NATIVE PLANTS: HYDRIC HAMMOCK COMMUNITY

TREES & PALMS



Acer rubrum (Red Maple)



Acoelorrhaphe wrightii
(Paurotis Palm)



Annona glabra (Pond Apple)



Roystonea regia (Royal Palm)



Sabal palmetto (Sabal Palm)



Taxodium distichum (Bald Cypress)



Conocarpus erectus (Green Buttonwood)



Ilex cassine (Dahoon Holly)



Magnolia virginiana (Sweet Bay Magnolia)



Myrica cerifera (Wax Myrtle)



NATIVE PLANTS: HYDRIC HAMMOCK COMMUNITY

SHRUBS



Callicarpa americana
(Beautyberry)



Canna indica (Yellow
Canna)



Chrysobalanus icaco
(Cocoplum)



Hibiscus coccineus
(Swamp Hibiscus)



Acrostichum aureum
(Swamp Fern)



Acrostichum danaeifolium
(Leather Fern)



Ardisia escallanoides
(Marlberry)



Hymenocallis latifolia (Spider Lily)



Nephrolepis exaltata Bostoniensis
(Boston Fern)



Osmandastrum cinnamomeum
(Cinnamon Fern)



Sagittaria lancifolia (Lance Leaf
Arrowhead)



Spartina bakerii (Sand Cordgrass)



Thalia geniculata (Alligator Flag)



NATIVE PLANTS: XERIC HAMMOCK COMMUNITY

TREES & PALMS



Bursera simarubra (Gumbo Limbo)



Choriophylla oliviforme
(Satinleaf)



Clusia rosea (Pitch Apple)



Gymnanthes lucida (Crabwood)



Krugiodendron ferreum
(Ironwood)



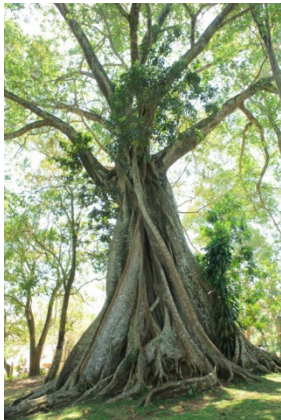
Lysiloma latisiliquum (Wild Tamarind)



Cocoloba diversifolia
(Pigeon Plum)



Eugenia foetida
(Spanish Stopper)



Ficus aurea (Strangler
Fig)



Guaicum sanctum (Lignum Vitae)



Myrcianthes fragrans (Simpson's
Stopper)



Pimenta dioca (Allspice)



Quercus virginiana (Live Oak)

The Underline Phase II

LEAD
ENGINEERING CONTRACTORS

A&P
ENGINEERS

S
G
A
DESIGN

MIAMI-DADE
COUNTY



FDOT



NATIVE PLANTS: XERIC HAMMOCK COMMUNITY

TREES & PALMS



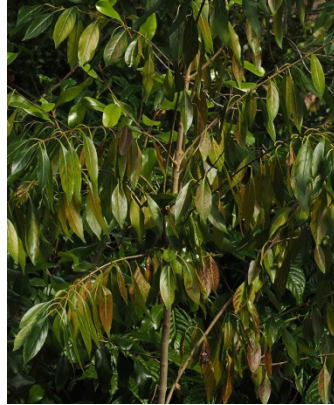
Simaruba glauca (Paradise Tree)



Thrinax radiata (Green Thatch Palm)



Sabal palmetto (Sabal Palm)



Sideroxylon salicifolium (Willow Busic)

SHRUBS



Callicarpa americana (Beautyberry)



Chrysobalanus icaco (Cocoplum)



Nephrolepis exaltata Bostoniensis (Boston Fern)



Psychotria bahamensis (Wild Coffee)



Serenoa repens (Saw Palmetto)



Stachytarpheta jamaicensis (Blue Portweed)



Zamia pumila (Cootie)



NATIVE PLANTS: PINELAND COMMUNITY

TREES & PALMS



Acacia farnesiana (Sweet Acacia)



Bursera simaruba (Gumbo Limbo)



Eugenia foetida
(Spanish Stopper)

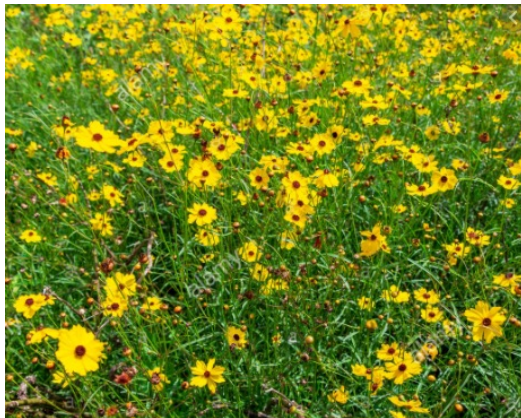


Pinus Elliottii (Slash Pine)

SHRUBS



Chrysobalanus icaco
(Cocoplum)



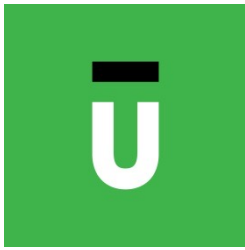
Coreopsis leavenworthii
(Leavenworth's Tickseed)



Eragrostis elliottii (Elliott's
Love Grass)

The Underline Phase II





NATIVE PLANTS: PINELAND COMMUNITY

SHRUBS



Acacia farnesiana
(Sweet Acacia)



Forestiera segregata
(Florida Privet)



Lantana involucrata
(Lantana)



Mimosa strigilosa
(Sunshine Mimosa)



Muhlenbergia capillaris
(Muhly Grass)



Seroenoa repens
(Saw Palmetto)



Zamia pumila (Coontie)



Tripsacum floridanum
(Dwarf Fakahatchee
Grass)



NATIVE PLANTS: BUTTERFLY GARDENS

SHRUBS



Asclepias curassavica
(Milkweed)



Senna mexicana Chapmanii
(Bahamas Senna)



Hamelia cuprea (Dwarf
Firebush)



Hamelia patens
(Firebush)



Heliotropium angiospermum
(Scorpion's Tail)



Phylla nodiflora (Frogfruit)



Saururus cernuus (Lizard's
Tail)



Sophora tomentosa (Necklace
Pod)



Stachytarpheta jamaicensis
(Blue Porterweed)